



**India Meteorological Department
Earth System Science Organisation
(Ministry of Earth Sciences)**

BULLETIN NO. : 25 (BOB/09/2018)

TIME OF ISSUE: 2000 HOURS IST

DATED: 13.11.2018

FROM: INDIA METEOROLOGICAL DEPARTMENT (FAX NO. 24643965/24699216/24623220)

TO: CONTROL ROOM, NDM, MINISTRY OF HOME AFFAIRS (FAX.NO. 23093750)

CONTROL ROOM NDMA (FAX.NO. 26701729)

CABINET SECRETARIAT (FAX.NO.23012284, 23018638)

PS TO HON'BLE MINISTER FOR S & T AND EARTH SCIENCES (FAX NO.23316745)

SECRETARY, MOES, (FAX NO. 24629777)

H.Q. (INTEGRATED DEFENCE STAFF AND CDS) (FAX NO. 23005137/23005147)

DIRECTOR GENERAL, DOORDARSHAN (23385843)

DIRECTOR GENERAL, AIR (23421105, 23421219)

PIB MOES (FAX NO. 23389042)

UNI (FAX NO. 23355841)

D.G. NATIONAL DISASTER RESPONSE FORCE (NDRF) (FAX NO. 26105912/23438091)

DIRECTOR, PUNCTUALITY, INDIAN RAILWAYS (FAX NO. 23388503)

CHIEF SECRETARY, GOVT. OF ODISHA (FAX NO. 0674 -2536660)

CHIEF SECRETARY, ANDHRA PRADESH (FAX NO. 0863-2441029)

CHIEF SECRETARY, TAMIL NADU (FAX NO. 044-25672304, 25672603, 28546624)

CHIEF SECRETARY, ANDAMAN & NICOBAR ISLANDS (FAX NO. 03192- 232656)

CHIEF SECRETARY, WEST BENGAL (FAX NO. 033-22144328)

CHIEF SECRETARY, PUDUCHERRY (FAX NO. 0413-2337575)

CHIEF SECRETARY, KERALA (FAX NO. 0471- 2327176)

Sub: Cyclonic storm 'GAJA' over Westcentral and adjoining Eastcentral & South Bay of Bengal: Cyclone Alert for Tamil Nadu & Puducherry coast: Yellow Message

The Cyclonic storm 'GAJA' over Westcentral and adjoining Eastcentral & South Bay of Bengal moved west-southwestwards with a speed of 10 kmph during past 06 hours and lay centred at 1730 hrs IST of today, the 13th November, 2018 over Westcentral and adjoining Eastcentral & South Bay of Bengal near latitude 13.4°N and longitude 86.0°E, about 620 km east-northeast of Chennai (Tamil Nadu) and 720 km northeast of Nagapattinam (Tamil Nadu). It is likely to move west-southwestwards and intensify further into a Severe Cyclonic Storm during next 24 hours. While moving west-southwestwards further, it is likely to weaken gradually on 15th November and cross Tamil Nadu coast between Pamban and Cuddalore as a Cyclonic Storm during 15th November afternoon.

Forecast track and intensity are given in the following table:

Date/Time(IST)	Position (Lat. °N/ long. °E)	Maximum sustained surface wind speed (Kmph)	Category of cyclonic disturbance
13.11.18/1730	13.4/86.0	70-80 gusting to 90	Cyclonic Storm
13.11.18/2330	13.1/85.3	70-80 gusting to 90	Cyclonic Storm
14.11.18/0530	12.7/84.7	75-85 gusting to 95	Cyclonic Storm
14.11.18/1130	12.3/84.0	80-90 gusting to 100	Cyclonic Storm
14.11.18/1730	11.9/83.2	90-100 gusting to 115	Severe Cyclonic Storm
15.11.18/0530	11.1/80.9	80-90 gusting to 100	Cyclonic Storm
15.11.18/1730	10.6/79.3	65-75 gusting to 85	Cyclonic Storm
16.11.18/0530	10.2/77.9	50-60 gusting to 70	Deep Depression
16.11.18/1730	9.9/76.3	40-50 gusting to 60	Depression
17.11.18/0530	9.7/74.7	25-35 gusting to 45	Low

Spatial rainfall distribution: Isolated: <25%, A few: 26-50%, Many: 51-75%, Most: 76-100%

Rainfall amount (mm): Heavy rain: 64.5 – 115.5, Very heavy rain: 115.6 – 204.4, Extremely heavy rain: 204.5 or more.

Warnings:

(i) Heavy rainfall warnings:

Region	14 November 2018	15 November 2018*	16 November 2018*
Tamilnadu	Rainfall at many places with heavy falls at isolated places very likely to commence over north coastal Tamil Nadu & adjoining districts of south coastal Tamil Nadu from 14 th Nov. evening.	Rainfall at most places with heavy to very heavy at a few places over Tamilnadu. Extremely heavy falls (≥ 20 cm) at isolated places is also likely over Cuddalore, Nagappattinam, Tiruvarur, Thanjavur, Pudukkottai, Tuticorin and Ramanathapuram districts.	Rainfall at most places with heavy falls at a few places and very heavy at isolated places very likely over interior Tamil Nadu.
South Coastal Andhra Pradesh	Rainfall at many places with heavy falls at isolated places very likely to commence from 14 th November evening.	Rainfall at most places with heavy falls at isolated places	Nil
Rayalaseema	Nil	Rainfall at many places with heavy falls at isolated places	Nil
Kerala	NIL	Rainfall at many places with heavy to very heavy falls at isolated places	Rainfall at most places with heavy to very heavy falls at isolated places
South Interior Karnataka	Nil	Nil	Rainfall at many places with falls at isolated places

Legends: **Red-Take Action**; **Orange- Be prepared**; **Yellow- be updated**; **Green: No warning**

Heavy rain: 64.5-115.5 mm/day; Very heavy rain: 115.6-204.4 mm/day; Extremely heavy rain: more than 204.4 mm/day

Note 1: * Rainfall till 0830 IST of next day.

Note 2: Red colour warning means take action. It does not mean red alert.

(i) Wind warning

- Gale wind speed reaching 70-80 kmph gusting to 90 kmph prevails over Westcentral and adjoining Eastcentral & South Bay of Bengal. It is very likely to increase gradually becoming 90-100 kmph gusting to 110 kmph over southwest & adjoining westcentral and southeast Bay of Bengal from 14th November 2018.
- Squally wind speed reaching 45-55 kmph gusting to 65 kmph very likely to commence along & off north Tamil Nadu & Puducherry and adjoining south Andhra Pradesh coasts from 14th November morning. It is very likely to increase gradually becoming Gale wind speed 80-90 kmph gusting to 100 kmph along & off Tamil Nadu & Puducherry coasts from 15th November morning onwards.
- Strong wind speed reaching 30-40 kmph gusting to 50 kmph very likely over interior Tamilnadu, south Kerala, southeast Arabian Sea along & off Kerala coast, Comorian area, Gulf of Mannar and Palk Strait on 16th November. Strong wind speed reaching 30-40 kmph gusting to 50 kmph very likely to prevail over southeast Arabian Sea and along & off Kerala coast on 17th November.

(ii) Sea condition

Sea condition is high over Westcentral and adjoining Eastcentral & South Bay of Bengal. It will become 'very high' over southwest and adjoining westcentral and southeast Bay of Bengal on 14th and high over the southwest Bay of Bengal on 15th. The sea condition is very likely to be rough to very rough along and off Tamil Nadu-south Andhra Pradesh coasts from

Spatial rainfall distribution: Isolated: <25%, A few: 26-50%, Many: 51-75%, Most: 76-100%

Rainfall amount (mm): Heavy rain: 64.5 – 115.5, Very heavy rain: 115.6 – 204.4, Extremely heavy rain: 204.5 or more.

14th November morning and high on along & off Tamil Nadu & Puducherry coast on 15th November morning.

(iii) Storm Surge Warning

- Storm surge of height of about 1.0 meter above astronomical tide is very likely to inundate low lying areas of **Nagapattinam, Thanjavur, Pudukkottai and Ramanathapuram districts of Tamil Nadu and Karaikal district of Puducherry** at the time of landfall.

(iv) Damage Expected over districts of Cuddalore, Nagapattinam, Tiruvarur, Thanjavur, Pudukkottai and Ramanathapuram districts of Tamil Nadu and Karaikal district of Puducherry:

- Major damage to thatched huts/houses, roof tops may blow off and unattached metal sheets may fly. Damage to power and communication lines. Major damage to Kutcha & minor damage to Pucca roads. Breaking of tree branches and uprooting of large avenue trees. Damage to paddy crops, banana, papaya trees and orchards. Sea water inundation in low lying areas after erosion of Kutcha embankments.

(v) Action Suggested:

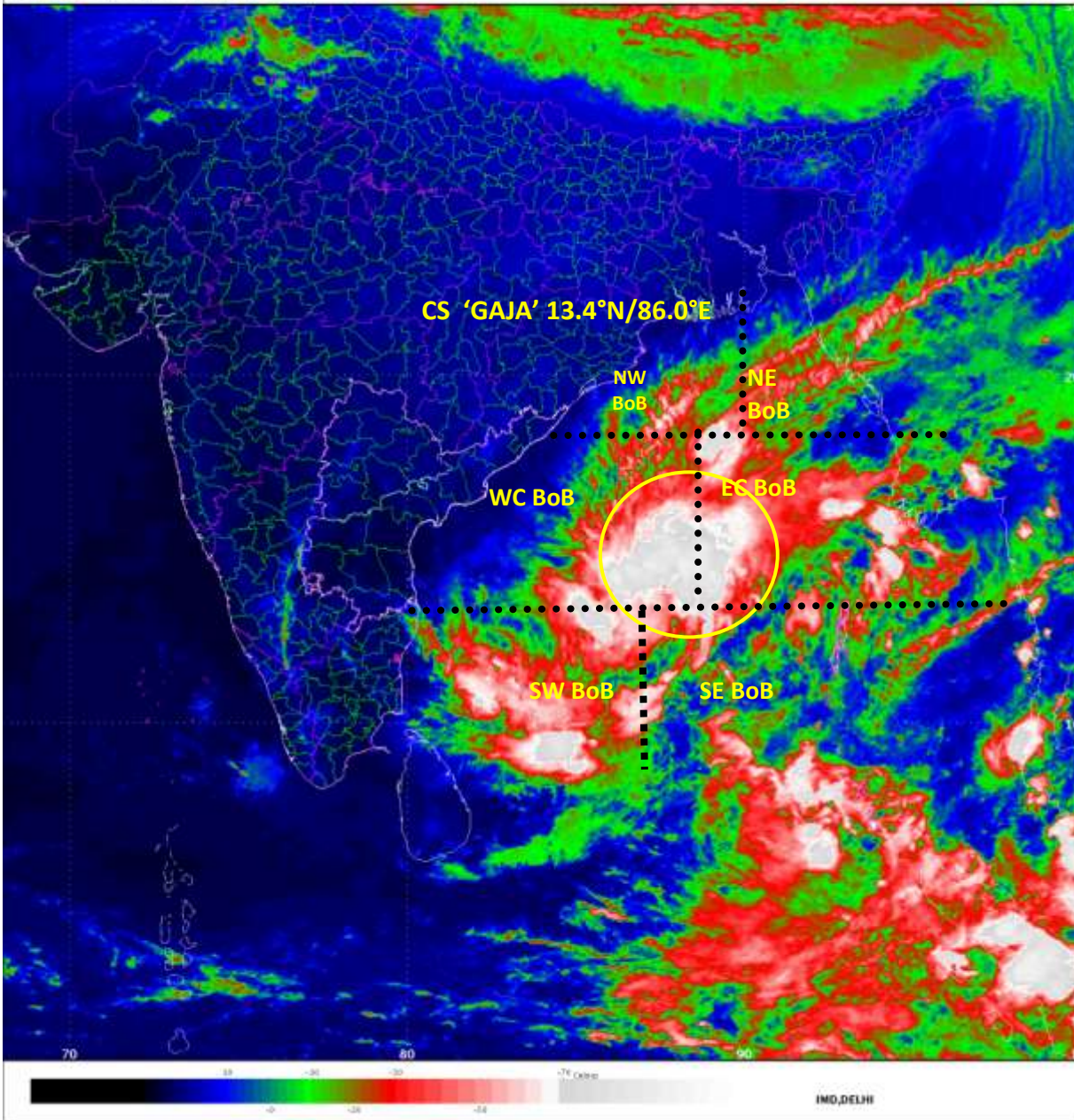
- Total suspension of fishing operations along & off Tamil Nadu & Puducherry and adjoining south Andhra Pradesh coasts till 15th November.
- The fishermen are advised not to venture into central parts of south & central Bay of Bengal on 13th November and into southwest & adjoining westcentral Bay of Bengal till 15th November.
- The fishermen, who are in deep Sea are advised to return to coasts.
- Coastal hutment dwellers are advised to move to safer places. Other people in the affected areas to remain indoors.

The next bulletin will be issued at 2330 hrs IST of today, the 13th November, 2018.

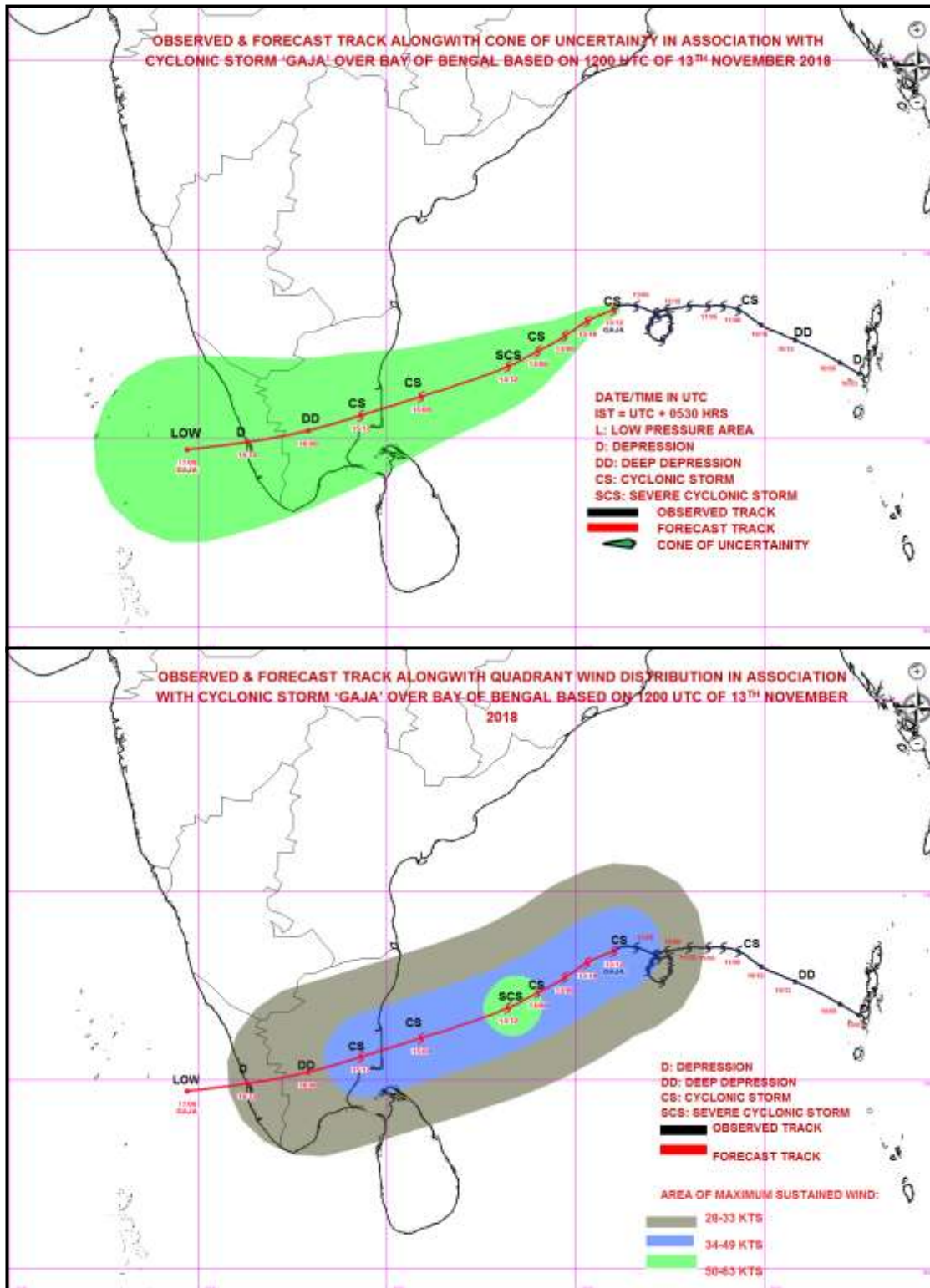
(Sunitha Devi)
Scientist-E, RSMC, New Delhi

*Copy to: CRS, Pune/ ACWC Kolkata/ Chennai/ CWC Bhubaneswar/CWC
Thiruvananthapuram/Visakhapatnam*

Spatial rainfall distribution: Isolated: <25%, A few: 26-50%, Many: 51-75%, Most: 76-100%
Rainfall amount (mm): Heavy rain: 64.5 – 115.5, Very heavy rain: 115.6 – 204.4, Extremely heavy rain: 204.5 or more.



Spatial rainfall distribution: Isolated: <25%, A few: 26-50%, Many: 51-75%, Most: 76-100%
Rainfall amount (mm): Heavy rain: 64.5 – 115.5, Very heavy rain: 115.6 – 204.4, Extremely heavy rain: 204.5 or more.



Spatial rainfall distribution: Isolated: <25%, A few: 26-50%, Many: 51-75%, Most: 76-100%
 Rainfall amount (mm): Heavy rain: 64.5 – 115.5, Very heavy rain: 115.6 – 204.4, Extremely heavy rain: 204.5 or more.