



India Meteorological Department  
(Ministry of Earth Sciences)

NATIONAL BULLETIN NO. 01 (AS/02/2024)

TIME OF ISSUE: 2100 HOURS IST

DATED: 13.10.2024

FROM: INDIA METEOROLOGICAL DEPARTMENT

(FAX NO. 24643965/24699216/24623220)

TO: CONTROL ROOM, NDM, MINISTRY OF HOME AFFAIRS (FAX.NO. 23093750)  
CONTROL ROOM NDMA (FAX.NO. 26701729)  
CABINET SECRETARIAT (FAX.NO.23012284, 23018638)  
PS TO HON'BLE MINISTER FOR S & T AND EARTH SCIENCES (FAX NO.23316745)  
SECRETARY, MOES (FAX NO. 24629777)  
H.Q. (INTEGRATED DEFENCE STAFF AND CDS) (FAX NO. 23005137/23005147)  
DIRECTOR GENERAL, DOORDARSHAN (23385843)  
DIRECTOR GENERAL, AIR (23421105, 23421219)  
PIB MOES (FAX NO. 23389042)  
UNI (FAX NO. 23355841)  
D.G. NATIONAL DISASTER RESPONSE FORCE (NDRF) (FAX NO. 26105912, 2436 3260)  
DIRECTOR, PUNCTUALITY, INDIAN RAILWAYS (FAX NO. 23388503)  
CHIEF SECRETARY, MAHARASHTRA (FAX NO. 022- 22028594)  
CHIEF SECRETARY, GUJARAT (FAX NO. 079-23250305)  
CHIEF SECRETARY, DAMAN & DIU (FAX NO. 0260-2230775)  
CHIEF SECRETARY, DADRA & NAGAR HAVELI (FAX NO. 0260-2645466)  
CHIEF SECRETARY, GOA (FAX NO. 0832-2415201)  
CHIEF SECRETARY, KARNATAKA (FAX NO. 080-22258913)  
CHIEF SECRETARY, KERALA (FAX NO. 0471-2327176)  
CHIEF SECRETARY, LAKSHADWEEP (FAX NO. 04896-268124)

**Sub: Depression over central Arabian Sea**

The Well Marked Low pressure area over eastcentral & adjoining westcentral Arabian sea moved west-northwestwards, intensified into a Depression and lay centred at 1730 hours IST of today, the 13<sup>th</sup> October, 2024 over central Arabian Sea near latitude 15.6°N and longitude 65.0°E, about 860 km southeast of Masirah (Oman), 1180 km east of Salalah (Oman) and 1380 km east of Al Ghaidah (Yemen).

It is likely to move west-northwestwards towards Oman coast during next 2 days.

**Warnings:**

**(i) Wind warning:**

- Squally wind speed reaching 40-50 kmph gusting to 60 kmph is likely to prevail over central parts of Arabian Sea till 14<sup>th</sup> October evening and decrease gradually thereafter.
- Squally wind speed reaching 35-45 kmph gusting to 55 kmph is likely to prevail over adjoining central parts of north Arabian Sea till 14<sup>th</sup> October evening and decrease gradually thereafter.
- Squally weather with wind speed reaching 35-45 kmph gusting to 55 kmph is likely to prevail over adjoining eastcentral Arabian Sea till 14<sup>th</sup> evening and improve gradually thereafter.
- Squally wind speed reaching 35-45 kmph gusting to 55 kmph is likely to prevail over westcentral Arabian Sea from 14<sup>th</sup> night till 16<sup>th</sup> morning and decrease gradually thereafter.

**(ii) Sea condition:**

- Rough sea conditions is likely to prevail over central parts of Arabian Sea till 14<sup>th</sup> evening and improve thereafter.
- Rough sea condition is likely over adjoining eastcentral Arabian Sea till 14<sup>th</sup> evening.
- Rough sea condition is likely to prevail only over westcentral Arabian Sea from 14<sup>th</sup> night to 16<sup>th</sup> October morning.

**(iii) Fishermen warning:**

Fishermen are advised not venture into

- Central and adjoining north Arabian Sea till evening of 14<sup>th</sup> October.
- Westcentral Arabian Sea till morning of 16<sup>th</sup> October.

● **Impact Expected over Sea area**

- Reduction of visibility over sea area due to sea spray induced by strong wind and heavy rainfall.
- Impact expected for boats, motor boats, smaller ships and trawler used for fishing.

❖ **Action Suggested**

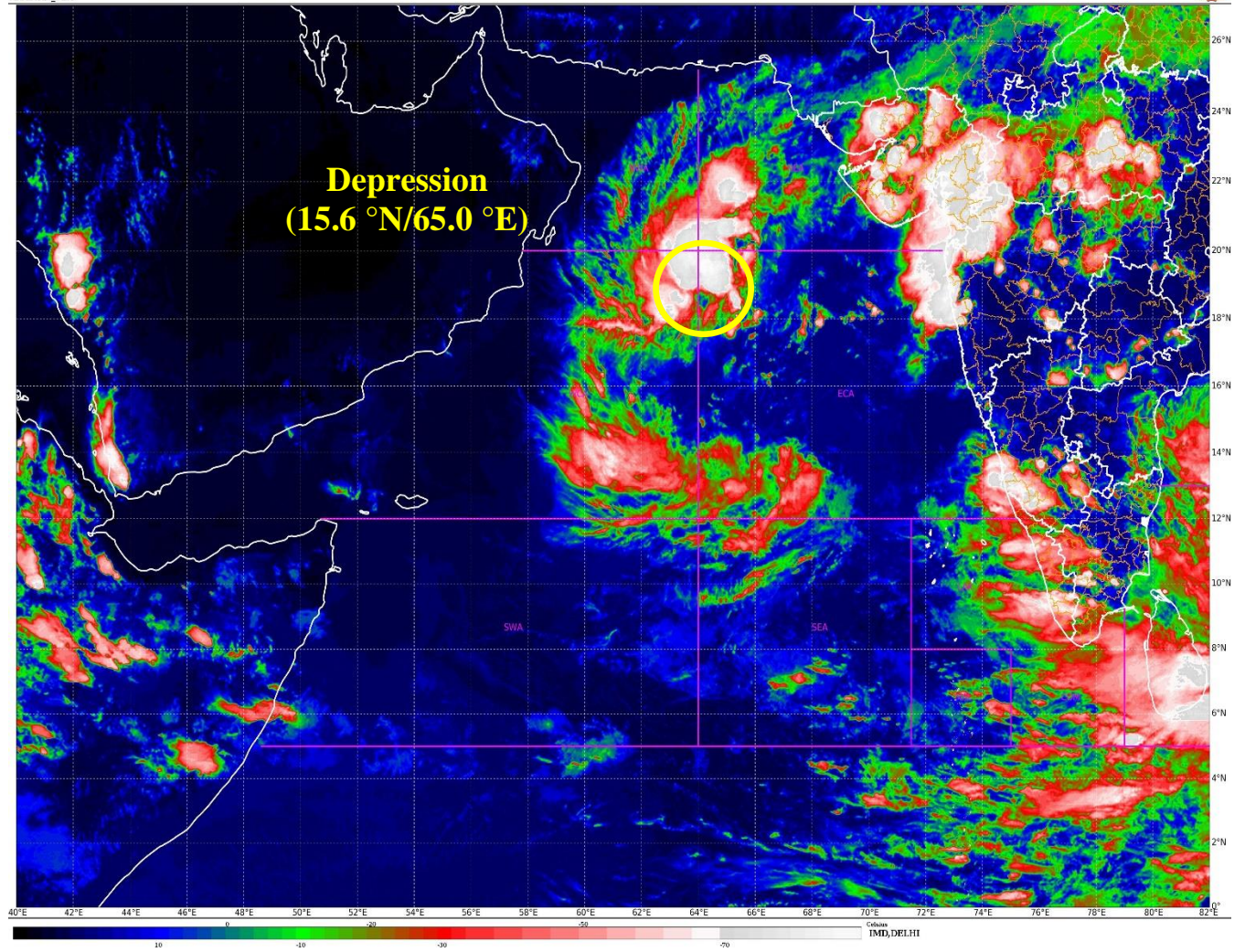
Fishermen are advised not venture into

- Central and adjoining north Arabian Sea till evening of 14<sup>th</sup> October.
- Westcentral Arabian Sea till morning of 16<sup>th</sup> October.

**Next bulletin will be issued at 0230 hours IST of tomorrow, the 14<sup>th</sup> October, 2024.**

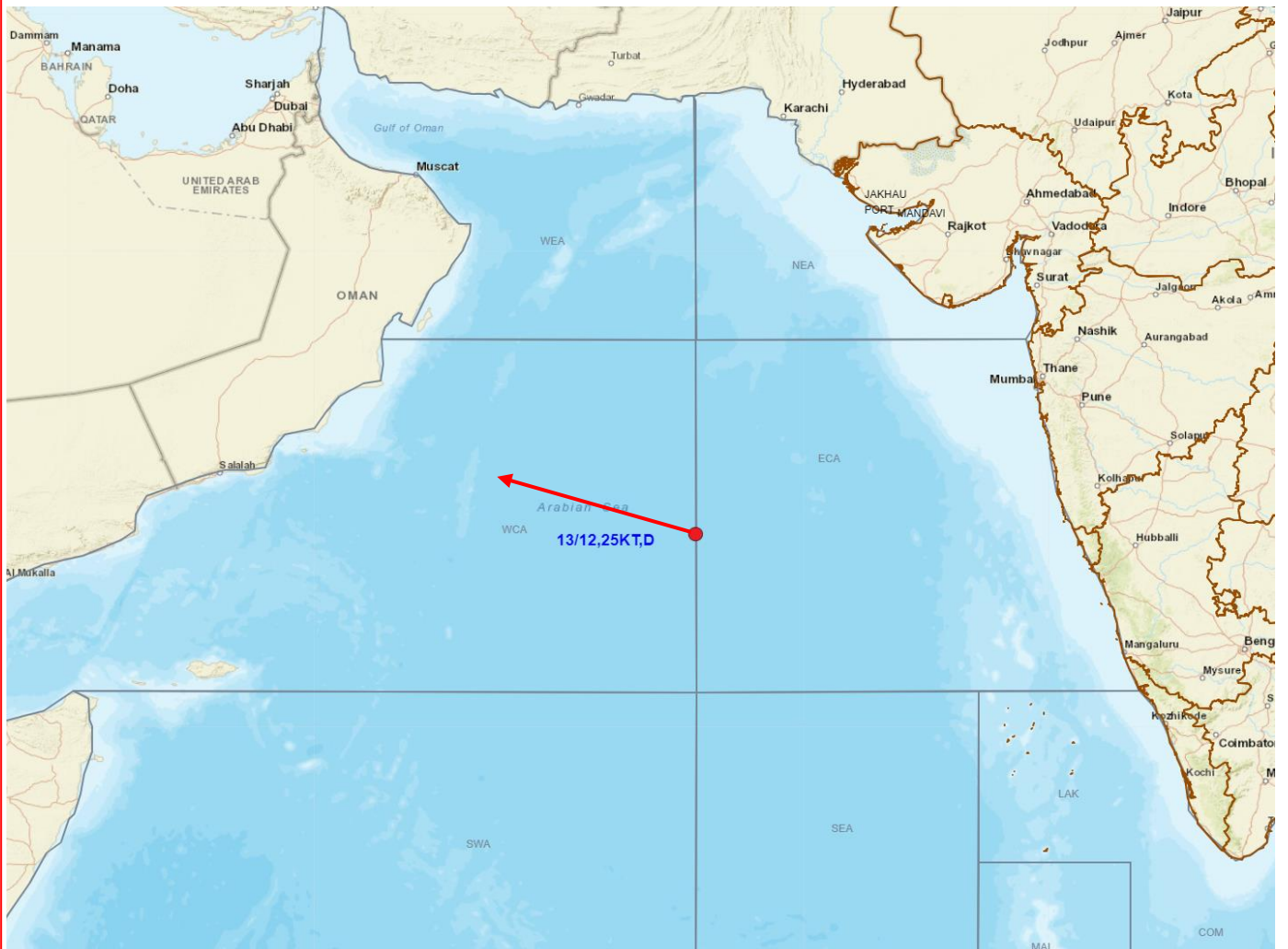
**(Ananda Kumar Das)  
Scientist-F, RSMC,  
IMD, New Delhi**

*Copy to: ACWC Kolkata/ACWC Mumbai/ACWC Chennai/CWC Ahmedabad/CWC  
Bhubaneswar/CWC Vishakhapatnam CWC, Thiruvananthapuram/ MC, Goa*





## OBSERVED AND FORECAST TRACK OF DEPRESSION OVER CENTRAL ARABIAN SEA BASED ON 1200 UTC OF 13<sup>th</sup> OCTOBER, 2024



**DATE/TIME IN UTC**  
**IST=UTC + 0530**  
**L: LOW PRESSURE AREA**  
**WML: WELL MARKED LOW PRESSURE AREA**  
**D: DEPRESSION (17-27 KT)**  
**DD: DEEP DEPRESSION (28-33 KT)**  
**CS: CYCLONIC STORM (34-47 KT)**  
**SCS: SEVERE CYCLONIC STORM (48-63KT)**  
**VSCS: VERY SEVERE CYCLONIC STORM (64-89 KT)**  
**ESCS: EXTREMELY SEVERE CYCLONIC STORM (90-119 KT)**  
**SuCS: SUPER CYCLONIC STORM (≥ 120 KT)**

- LESS THAN 34 KT**
- 34-47 KT**
- ≥ 48 KT**
- OBSERVED TRACK**
- FORECAST TRACK**
- CONE OF UNCERTAINTY**

### Fishermen Warning Graphics

