



**India Meteorological Department  
(Ministry of Earth Sciences)**

**NATIONAL BULLETIN NO. 25 (LAND/02/2024)**

**TIME OF ISSUE: 0220 HOURS IST**

**DATED:30.08.2024**

**FROM:INDIA METEOROLOGICAL DEPARTMENT**

**(FAX NO. 24643965/24699216/24623220)**

**TO: CONTROL ROOM, NDM, MINISTRY OF HOME AFFAIRS (FAX.NO. 23093750)  
CONTROL ROOM NDMA (FAX.NO. 26701729)  
CABINET SECRETARIAT (FAX.NO.23012284, 23018638)  
PS TO HON'BLE MINISTER FOR S & T AND EARTH SCIENCES (FAX NO.23316745)  
SECRETARY, MOES (FAX NO. 24629777)  
H.Q. (INTEGRATED DEFENCE STAFF AND CDS) (FAX NO. 23005137/23005147)  
DIRECTOR GENERAL, DOORDARSHAN (23385843)  
DIRECTOR GENERAL, AIR (23421105, 23421219)  
PIB MOES (FAX NO. 23389042)  
UNI (FAX NO. 23355841)  
D.G. NATIONAL DISASTER RESPONSE FORCE (NDRF) (FAX NO. 26105912, 2436 3260)  
DIRECTOR, PUNCTUALITY, INDIAN RAILWAYS (FAX NO. 23388503)  
CHIEF SECRETARY, ODISHA (FAX NO. 0674-2536660)  
CHIEF SECRETARY, WEST BENGAL (FAX NO. 033-22144328)  
CHIEF SECRETARY, ANDHRA PRADESH (FAX NO. 0863-2441029)  
CHIEF SECRETARY, TELANGANA (FAX NO. 040-23453700)  
CHIEF SECRETARY, MAHARASHTRA (FAX NO. 022- 22028594)  
CHIEF SECRETARY, GUJARAT (FAX NO. 079-23250305)  
CHIEF SECRETARY, DAMAN & DIU (FAX NO. 0260-2230775)  
CHIEF SECRETARY, DADRA & NAGAR HAVELI (FAX NO. 0260-2645466)  
CHIEF SECRETARY, GOA (FAX NO. 0832-2415201)**

**Sub: (a) Deep Depression over Kachchh & adjoining areas of Saurashtra, Northeast Arabian Sea and Pakistan and (b) Low Pressure Area over Westcentral & adjoining Northwest Bay of Bengal**

**(a) Deep Depression over Kachchh & adjoining areas of Saurashtra, Northeast Arabian Sea and Pakistan**

The deep depression over Saurashtra & Kachchh moved slowly westwards with a speed of 3 kmph during past 6 hours and lay centered at 2330 hours IST of 29<sup>th</sup> August, 2024 over Kachchh & adjoining areas of Saurashtra, Northeast Arabian Sea and Pakistan near latitude 23.6°N and longitude 69.0 °E, 90 km west-northwest of Bhuj (Gujarat), 40 km north-northeast of Naliya (Gujarat) and 230 km east-southeast of Karachi (Pakistan).

It is likely to move nearly westwards, emerge into northeast Arabian Sea off Kachchh and adjoining Saurashtra & Pakistan coasts and intensify into a Cyclonic Storm during next 12 hours. Thereafter, it would continue to move nearly west-northwestwards over northeast Arabian Sea away from Indian coast during subsequent 2 days.

Forecast track and intensity are given in the following table:

<b>Date/Time(IST)</b>	<b>Position (Lat. °N/ long. °E)</b>	<b>Maximum sustained surface wind speed (Kmph)</b>	<b>Category of cyclonic disturbance</b>
29.08.24/2330	23.6/69.0	50-60 gusting to 70	Deep Depression
30.08.24/0530	23.6/68.6	55-65 gusting to 75	Deep Depression
30.08.24/1130	23.7/68.1	60-70 gusting to 80	Cyclonic Storm
30.08.24/1730	23.8/67.6	65-75 gusting to 85	Cyclonic Storm
30.08.24/2330	23.9/66.9	70-80 gusting to 90	Cyclonic Storm
31.08.24/1130	24.0/65.5	65-75 gusting to 85	Cyclonic Storm
31.08.24/2330	24.0/63.9	60-70 gusting to 80	Cyclonic Storm
01.09.24/1130	23.6/62.3	50-60 gusting to 70	Deep Depression
01.09.24/2330	23.0/60.7	50-60 gusting to 70	Deep Depression

**Warnings:**

**(i) Rainfall Warning:**

**Gujarat State:**

**Saurashtra & Kachchh:** Light to moderate rainfall at most places **heavy to very heavy rainfall** at isolated places on 30<sup>th</sup> August and heavy rainfall at isolated places over coastal districts on 31<sup>st</sup> August.

**(ii) Wind warning:**

- Squally wind speed reaching 45-55 kmph gusting to 65 kmph is likely over the districts of South Gujarat Region and Saurashtra & Kutch on 30<sup>th</sup> August.
- Squally wind speed reaching 55-65 kmph gusting to 75 kmph is very likely to prevail along & off Gujarat coasts & adjoining Pakistan coasts and over northeast & adjoining eastcentral Arabian Sea during 30<sup>th</sup> to 31<sup>st</sup> August.
- Gale wind speed reaching 65-75 kmph gusting to 85 kmph is likely to prevail over northeast Arabian Sea off Gujarat and Pakistan coasts on 30<sup>th</sup> August, becoming 70-80 kmph gusting to 90 kmph from 31<sup>st</sup> August morning till 1<sup>st</sup> September morning and decrease gradually thereafter.
- Gale wind speed reaching 65-75 kmph gusting to 85 kmph is likely to prevail over northwest and adjoining westcentral Arabian Sea off Pakistan and southeast Iran coasts from 31<sup>st</sup> August till 1<sup>st</sup> September, morning. Thereafter, the winds would gradually decrease becoming squally wind speed reaching 50-60 kmph gusting to 70 kmph from evening of 1<sup>st</sup> September.
- Strong wind speed reaching 40-50 kmph gusting to 60 kmph is likely to prevail along and off north Maharashtra coasts during 30<sup>th</sup> to 31<sup>st</sup> August.

**(iii) Sea condition:**

- Squally weather with Rough to very Rough sea conditions is very likely to prevail along & off Gujarat & adjoining Pakistan and north Maharashtra Coasts till 31<sup>st</sup> August.
- Very rough to high sea condition is likely to prevail over northeast & adjoining eastcentral and Arabian Sea off Gujarat and Pakistan coasts during 30<sup>th</sup> August to 1<sup>st</sup> September.
- Very rough to high Sea condition is likely to prevail over northwest and adjoining westcentral Arabian Sea off Pakistan and southeast Iran coasts from 31<sup>st</sup> August till 2<sup>nd</sup> September.

**(iv) Fishermen warning:**

Fishermen are advised not venture into

- Northeast & adjoining Eastcentral Arabian Sea and along & off Gujarat & adjoining Pakistan and north Maharashtra Coasts till 31<sup>st</sup> August.
- Northwest & adjoining westcentral Arabian Sea and along & off Pakistan and southeast Iran coasts from 31<sup>st</sup> August till 2<sup>nd</sup> September.

**(v) Advisory for offshore/onshore Exploration and Production (E & P) Operators:**

- The small ships and offshore -onshore E & P operators, shipping and port authorities along & off Gujarat & north Maharashtra Coasts and Northeast & adjoining Eastcentral Arabian Sea are advised to keep watch on developing weather and take necessary actions on 30<sup>th</sup> August.

**(b) Low Pressure Area over Westcentral & adjoining Northwest Bay of Bengal**

The low pressure area over central and adjoining north Bay of Bengal moved west-northwestwards and lay over westcentral & adjoining northwest Bay of Bengal at 2330 hours IST of 29<sup>th</sup> August, 2024.

It is likely to move west-northwestwards and become more marked over the same region during next 12 hours. Thereafter, while moving towards north Andhra Pradesh and adjoining south Odisha coasts, it is likely to intensify into a depression over westcentral and adjoining northwest Bay of Bengal during subsequent 36 hours.

**Warnings:**

**(i) Rainfall Warning:**

**Odisha:** Light to moderate rainfall at most places with heavy to very heavy rainfall at isolated places during 30<sup>th</sup> to 31<sup>st</sup> August. Light to moderate rainfall at most places with isolated heavy rainfall likely on 1<sup>st</sup> September.

**Coastal Andhra Pradesh:** Light to moderate rainfall at most places with heavy rainfall at isolated places during 30<sup>th</sup> August to 1<sup>st</sup> September and heavy to very heavy rainfall at isolated places on 30<sup>th</sup> and 31<sup>st</sup> August.

**(ii) Wind warning:**

- Squally weather with wind speed reaching 30-40 kmph gusting to 50 kmph is likely to prevail over Westcentral and adjoining Northwest Bay of Bengal on 30<sup>th</sup> becoming 45-55 kmph gusting to 65 kmph on 31<sup>st</sup> August.
- Squally wind speed reaching 45-55 kmph gusting to 65 kmph is likely to prevail along & off North Andhra Pradesh & south Odisha coasts on 31<sup>st</sup> August.

**(iii) Sea condition:**

- Rough sea condition is very likely to prevail over Westcentral and adjoining Northwest Bay of Bengal till 31<sup>st</sup> August.
- Rough sea condition is very likely to prevail along & off North Andhra Pradesh & south Odisha coasts on 31 August.

**(iv) Fishermen warning:**

Fishermen are advised not venture into

- Westcentral & adjoining northwest Bay of Bengal till 31<sup>st</sup> August and along & off south Odisha and north Andhra Pradesh Coasts on 31<sup>st</sup> August.

**(v) Advisory for offshore/onshore Exploration and Production (E & P) Operators:**

- The small ships and offshore -onshore E & P operators, shipping and port authorities along & off north Andhra Pradesh & south Odisha coasts and westcentral and adjoining northwest Bay of Bengal are advised to keep watch on developing weather and take necessary actions on 30<sup>th</sup> August.

❖ **Impact Expected**

- Localized Flooding of roads, water logging in low lying areas and closure of underpasses mainly in urban areas of the above region.
- Occasional reduction in visibility due to heavy rainfall.
- Reduction of visibility over sea area due to sea spray induced by strong wind and heavy rainfall.
- Disruption of traffic in major cities due to water logging in roads leading to increased travel time.
- Minor damage to kutcha roads.
- Possibilities of damage to vulnerable structure.
- Localized Landslides/Mudslides/landslips/mud slips/land sinks/mud sinks.
- Damage to horticulture and standing crops in some areas due to inundation.
- It may lead to riverine flooding in some river catchments (for riverine flooding please visit Web page of CWC)

❖ **Action Suggested**

Fishermen are advised not venture into

- Northeast & adjoining Eastcentral Arabian Sea and along & off Gujarat & adjoining Pakistan and north Maharashtra Coasts till 31<sup>st</sup> August.
- Northwest & adjoining westcentral Arabian Sea and along & off Pakistan and southeast Iran coasts from 31<sup>st</sup> August till 2<sup>nd</sup> September.
- Westcentral & adjoining northwest Bay of Bengal till 31<sup>st</sup> August and along & off south Odisha and north Andhra Pradesh Coasts on 31<sup>st</sup> August.
- Judicious regulation of offshore/onshore Operations
- Judicious regulation of surface transports including railways and roadways.
- Check for traffic congestion on your route before leaving for your destination.
- Follow any traffic advisories that are issued in this regard.
- Avoid going to areas that face the water logging problems often.
- Avoid staying in vulnerable structure.

❖ **Agromet Advisories for Heavy Rainfall** likely over Gujarat, Odisha and Andhra Pradesh due to both systems

- Make provision for draining out excess water from crop fields to avoid water stagnation in Gujarat State, Odisha and Andhra Pradesh.
- Provide mechanical support to horticultural crops and staking to vegetables.

**Significant amount of rainfall (from 0830 hours IST to 2330 hours IST of 29.08.2024) (in cm) : Saurashtra & Kutch:** Naliya 15, Dwarka 6, Bhuj-Rudramata 3; **Coastal Andhra Pradesh & Yanam:** Kalingapatnam 8;

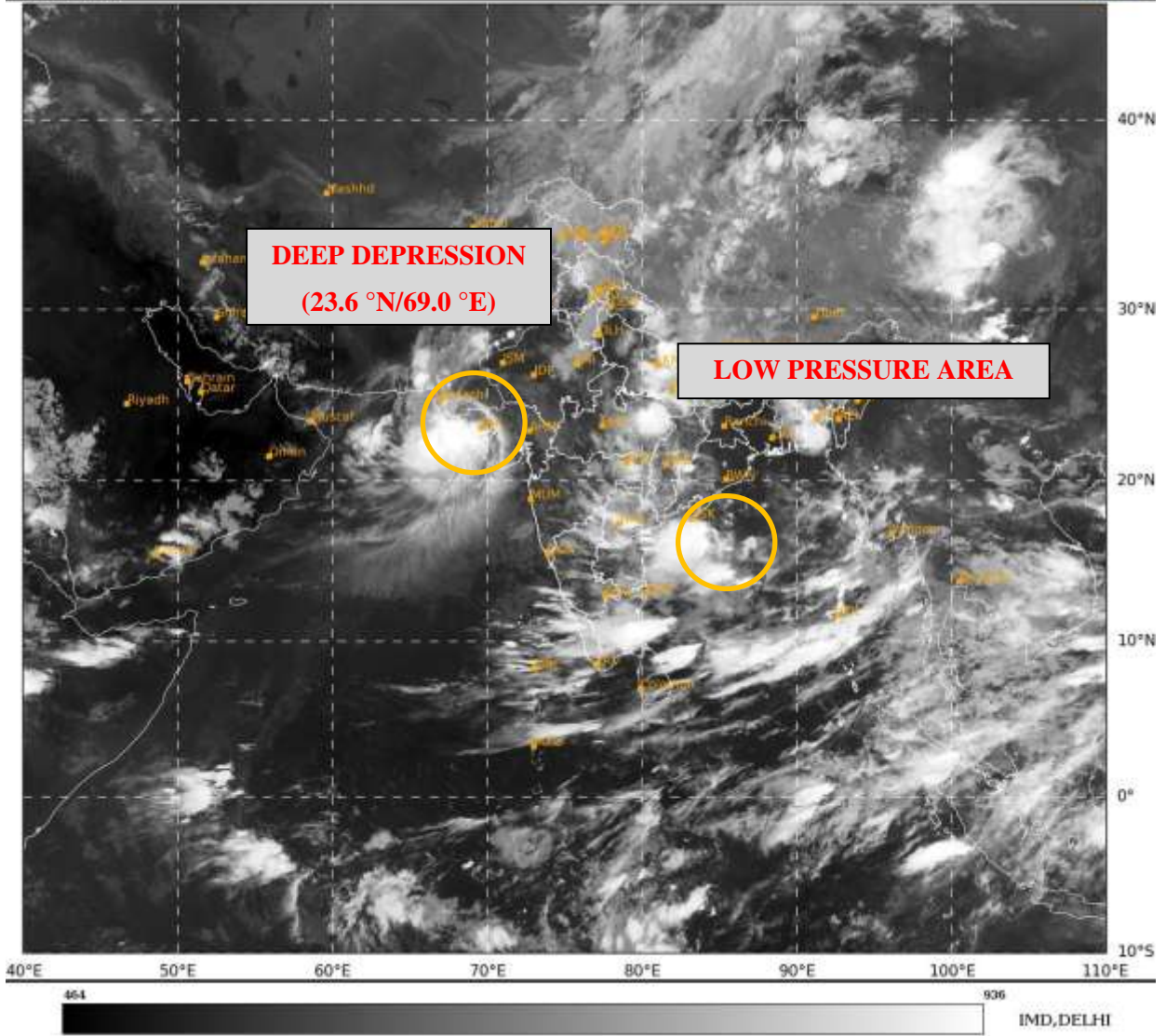
**Next bulletin will be issued at 0830 hours IST of today, the 30<sup>th</sup> August, 2024.**

**(Dr. Shashi Kant)**  
**Scientist-D, Cyclone Warning Division, IMD, New Delhi**

Copy to: ACWC Kolkata/ACWC Mumbai/RMC Mumbai/CWC Ahmedabad/MC Jaipur/RMC, Nagpur/MC, Bhopal//CWC Bhubaneswar/MC, Goa/MC, Ranchi

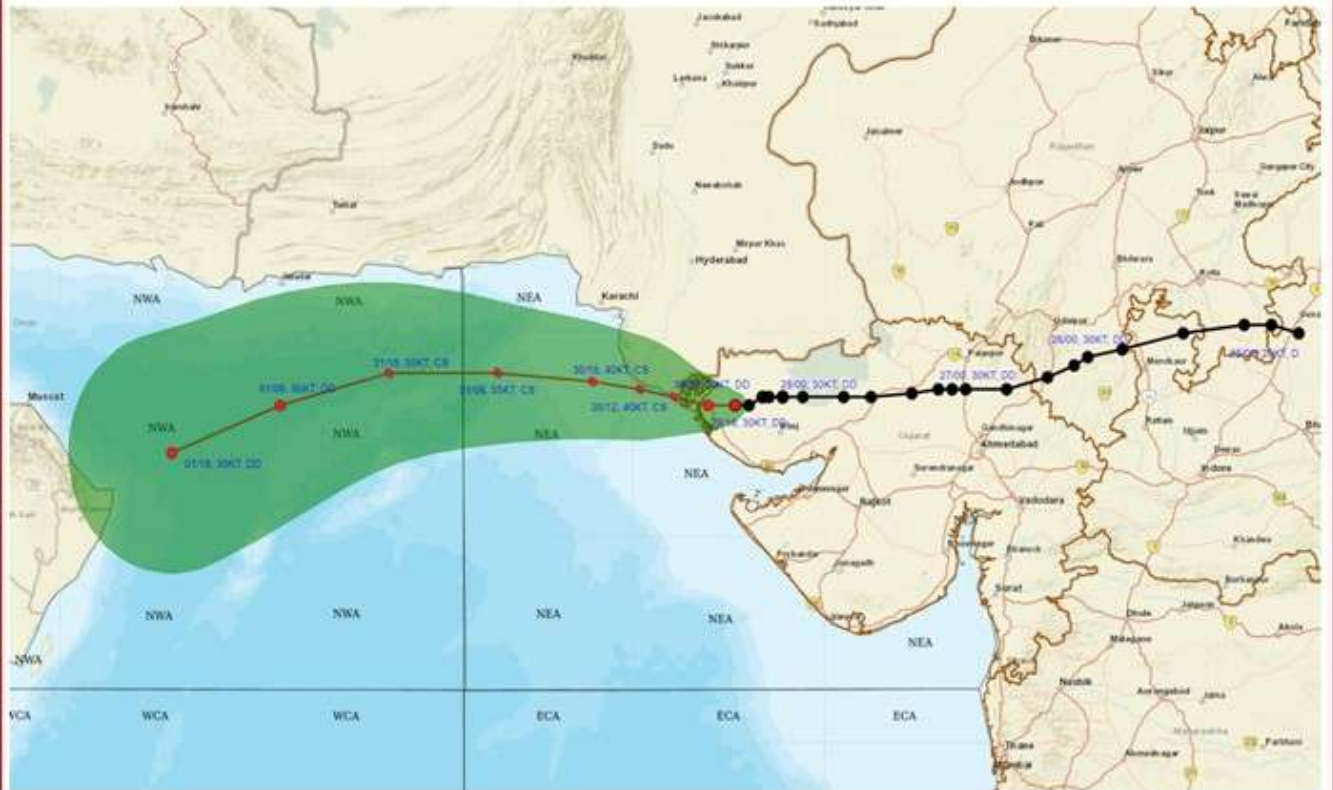
SAT : INSAT-3DR IMG  
IMC\_TIR1 10.8 um  
LIC Mercator

29-08-2024/(1715 to 1742) GMT  
29-08-2024/(2245 to 2312) IST





**OBSERVED AND FORECAST TRACK OF DEEP DEPRESSION OVER KACHCHH & ADJOINING AREAS OF SAURASHTRA, NORTHEAST ARABIAN SEA AND PAKISTAN BASED ON 1800 UTC (2330 IST) OF 29<sup>TH</sup> AUGUST, 2024.**



DATE/TIME IN UTC  
IST=UTC + 0530  
L: LOW PRESSURE AREA  
WML: WELL MARKED LOW PRESSURE AREA  
D: DEPRESSION (17-27 KT)  
DD: DEEP DEPRESSION (28-33 KT)  
CS: CYCLONIC STORM (34-47 KT)  
SCS: SEVERE CYCLONIC STORM (48-63KT)  
VSCS: VERY SEVERE CYCLONIC STORM (64-89 KT)  
ESCS: EXTREMELY SEVERE CYCLONIC STORM (90-119 KT)  
SuCS: SUPER CYCLONIC STORM (≥ 120 KT)

-  LESS THAN 34 KT
-  34-47 KT
-  ≥ 48 KT
-  OBSERVED TRACK
-  FORECAST TRACK
-  CONE OF UNCERTAINTY



**OBSERVED AND FORECAST TRACK ALONGWITH QUADRANT WIND DISTRIBUTION OF DEEP DEPRESSION OVER KACHCHH & ADJOINING AREAS OF SAURASHTRA, NORTHEAST ARABIAN SEA AND PAKISTAN BASED ON 1800 UTC (2330 IST) OF 29<sup>TH</sup> AUGUST, 2024**



DATE/TIME IN UTC

IST=UTC + 0530

L: LOW PRESSURE AREA

WML: WELL MARKED LOW PRESSURE AREA

D: DEPRESSION (17-27 KT)

DD: DEEP DEPRESSION (28-33 KT)

CS: CYCLONIC STORM (34-47 KT)

SCS: SEVERE CYCLONIC STORM (48-63KT)

VSCS: VERY SEVERE CYCLONIC STORM (64-89 KT)

ESCS: EXTREMELY SEVERE CYCLONIC STORM (90-119 KT)

SuCS: SUPER CYCLONIC STORM (≥ 120 KT)

● LESS THAN 34 KT

○ 34-47 KT

● ≥ 48 KT

— OBSERVED TRACK

— FORECAST TRACK

▲ CONE OF UNCERTAINTY

AREA OF MAXIMUM SUSTAINED WIND SPEED:

■ 28-33 KT (52-61 KMPH)

■ 34-49 KT (62-91 KMPH)

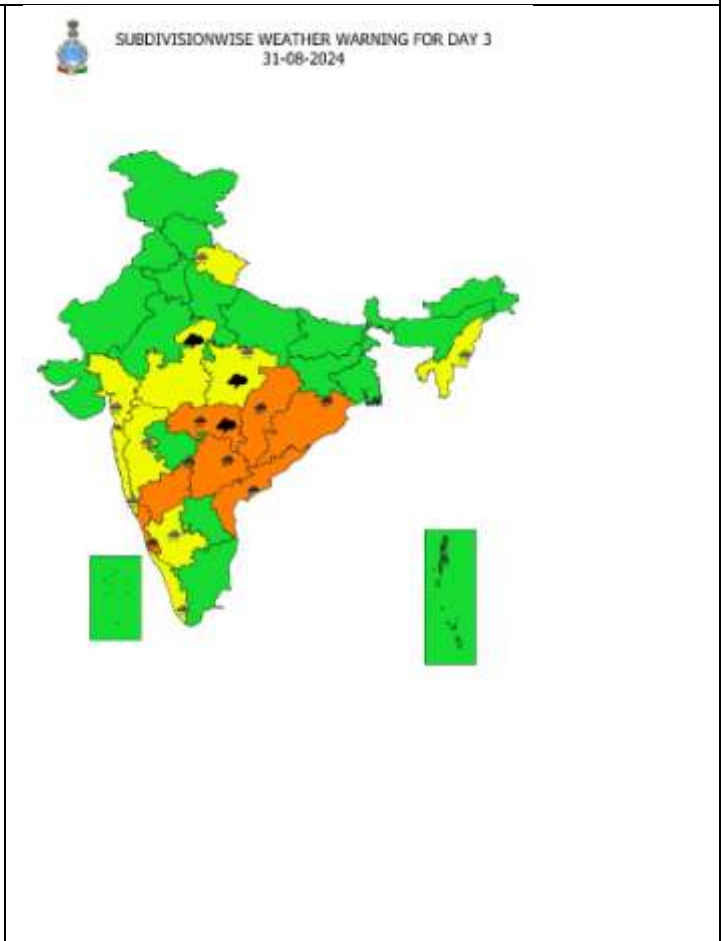
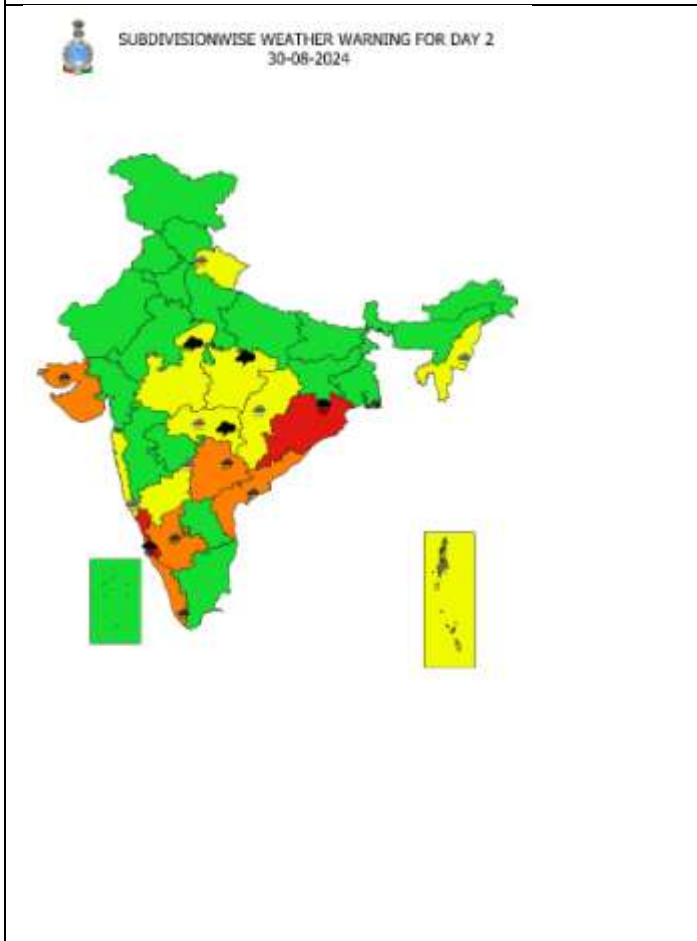
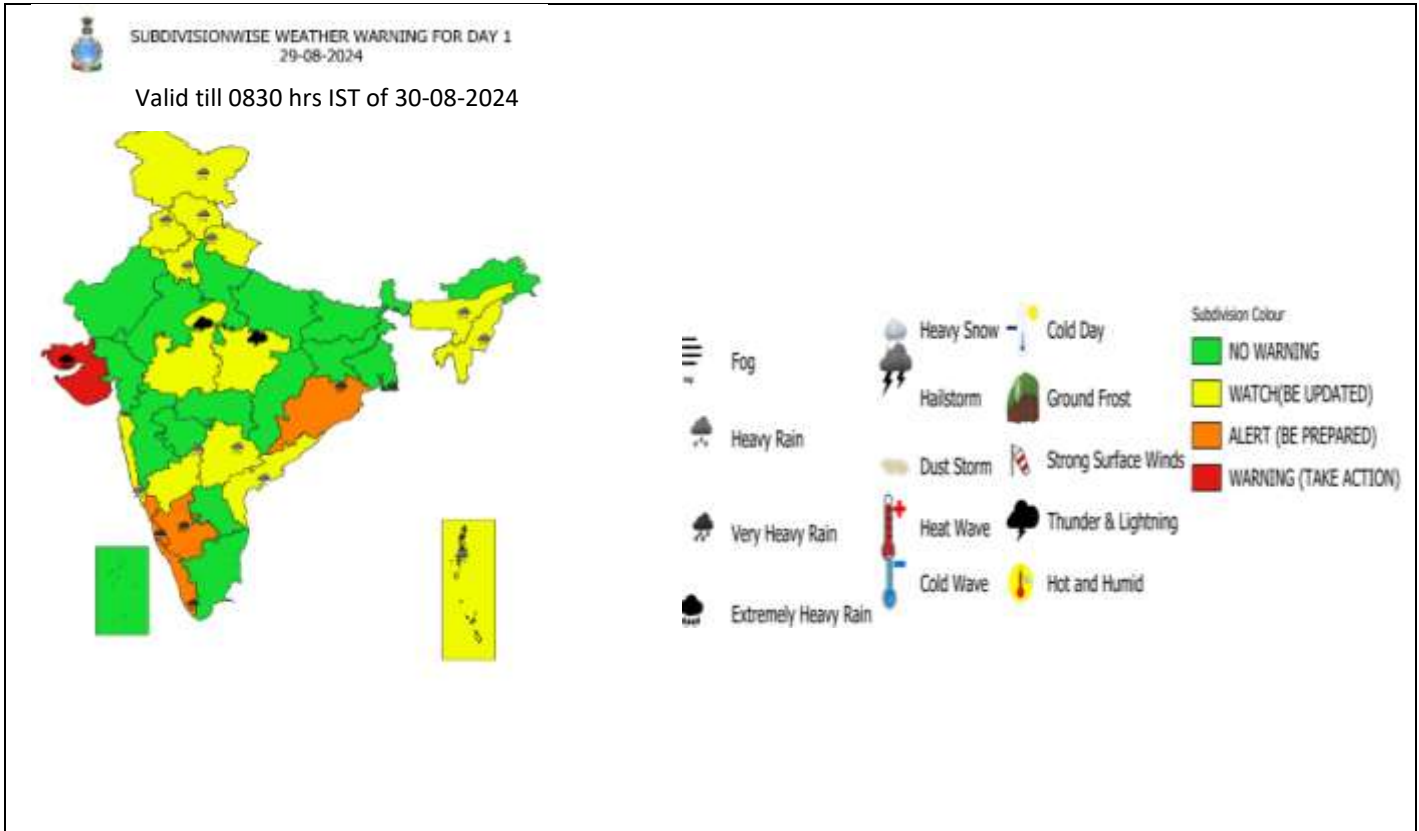
■ 50-63 KT (92-117 KMPH)

■ ≥ 64 KT (≥118 KMPH)

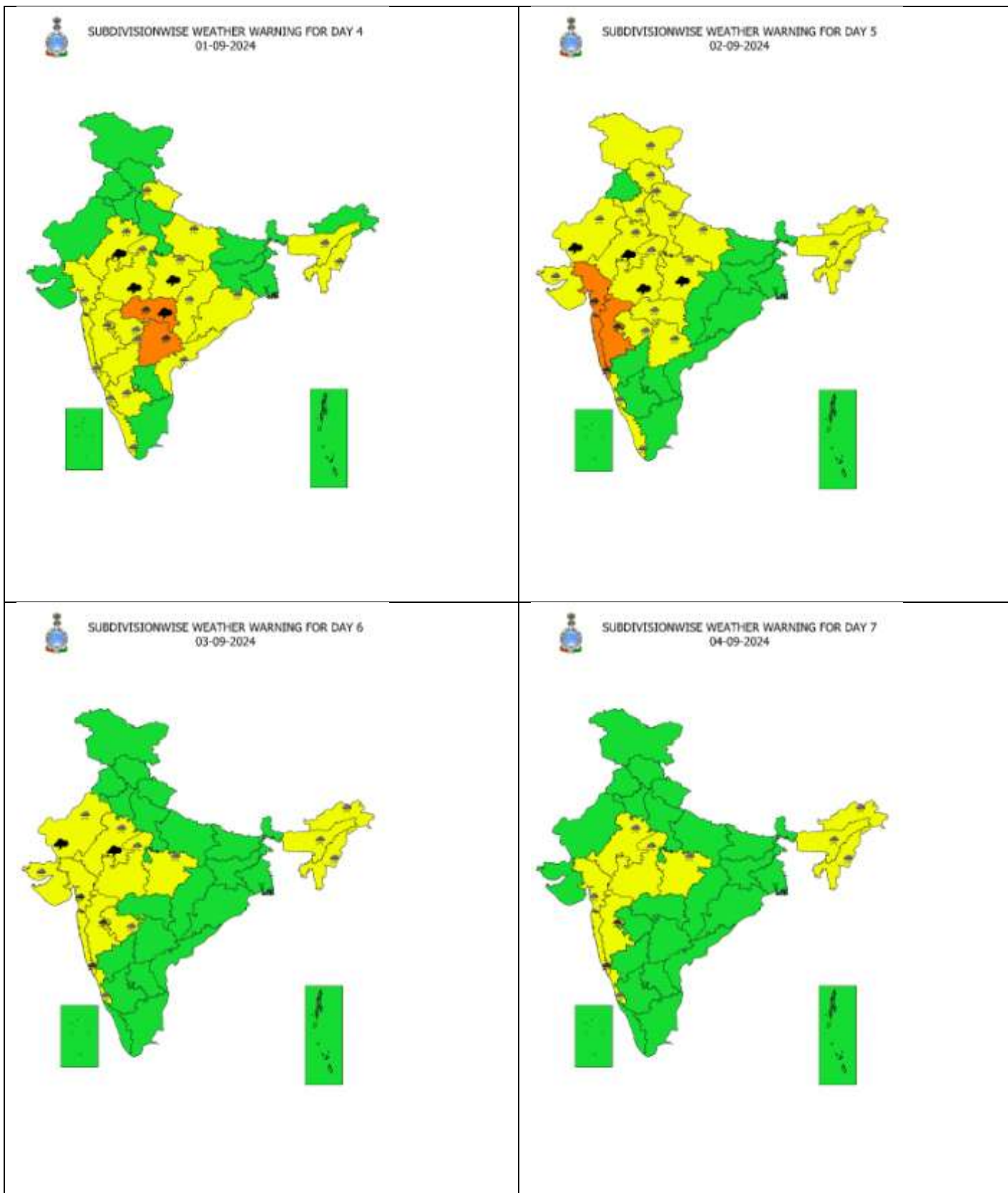
**IMPACT OVER THE SEA**

MSW (knot/kmph)	Impact	Action
28-33 (52-61)	Very rough seas	Total suspension of fishing operations
34-49 (62-91)	High to very high seas	Total suspension of fishing operations
50-63 (92-117)	Very high seas	Total suspension of fishing operations
≥ 64 (≥118)	Phenomenal	Total suspension of fishing operations

# Weather Warning Graphics

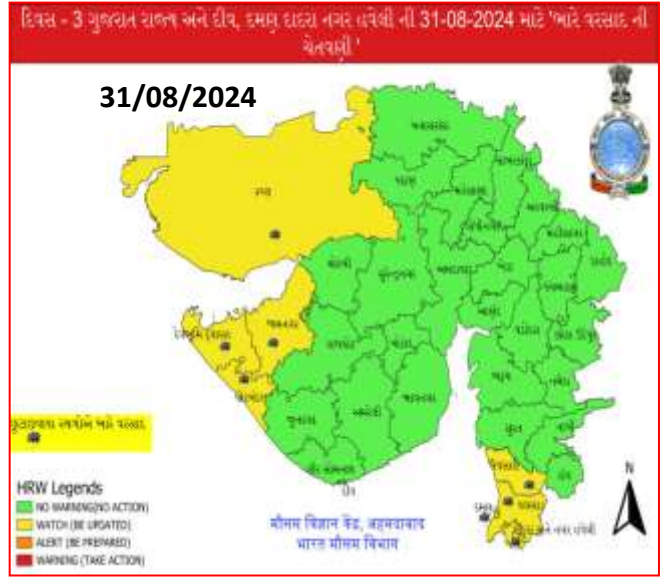
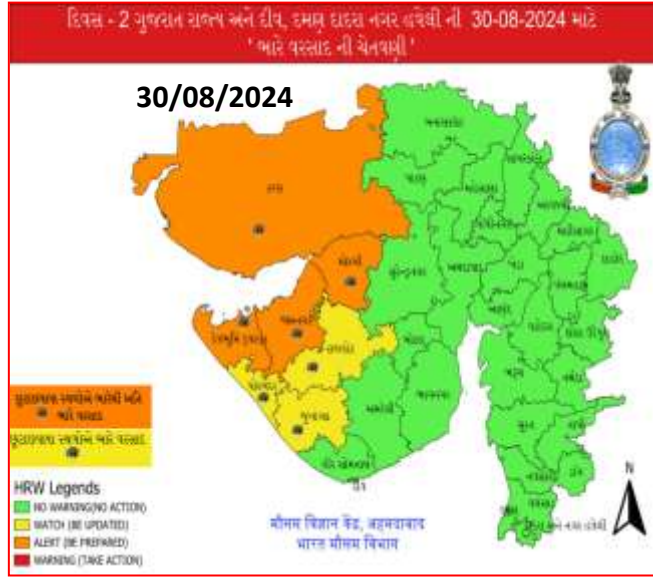




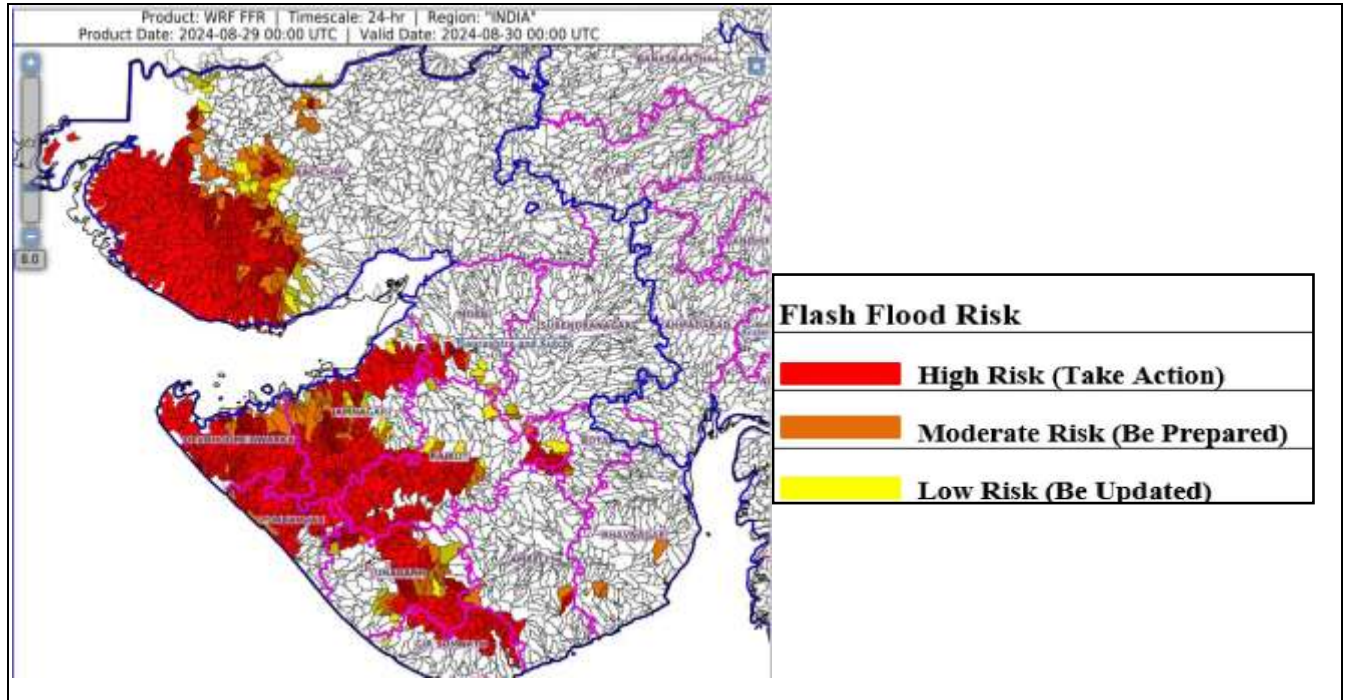


- Action may be taken based on **ORANGE AND RED** COLOUR warnings.
- Vulnerable regions likely urban and hilly areas action may be initiated for heavy rainfall warning.
- As the lead period increases forecast accuracy decreases.

## District wise Warning Graphics Gujarat



## Flash Flood Guidance



### 24 hours Outlook for the Flash Flood Risk (FFR) till 0530 IST of 30-08-2024 :

Moderate flash flood risk likely over few watersheds & neighbourhoods of following Met Sub-divisions during next 24 hours.

**Saurashtra & Kutch** - Amreli, Bhavnagar, Botad, Devbhoomi Dwarka, Gir Somnath, Jamnagar, Junagarh, Porbandar, Rajkot, Surendranagar, Morbi and Kachchh districts.

Surface runoff/ Inundation may occur at some fully saturated soils & low-lying areas over AoC as shown in map due to expected rainfall occurrence in next 24 hours.

### Fishermen Warning Graphics

