



India Meteorological Department

(Ministry of Earth Sciences)

NATIONAL BULLETIN NO.: 08 (BOB/02/2024)

TIME OF ISSUE: 1930 HOURS IST

DATED: 20.07.2024

FROM: INDIA METEOROLOGICAL DEPARTMENT (FAX NO. 24643965/24699216/24623220)

TO: CONTROL ROOM, NDM, MINISTRY OF HOME AFFAIRS (FAX.NO. 23093750)

CONTROL ROOM NDMA (FAX.NO. 26701729)

CABINET SECRETARIAT (FAX.NO.23012284, 23018638)

PS TO HON'BLE MINISTER FOR S & T AND EARTH SCIENCES (FAX NO.23316745)

SECRETARY, MOES (FAX NO. 24629777)

H.Q. (INTEGRATED DEFENCE STAFF AND CDS) (FAX NO. 23005137/23005147)

DIRECTOR GENERAL, DOORDARSHAN (23385843)

DIRECTOR GENERAL, AIR (23421105, 23421219)

PIB MOES (FAX NO. 23389042)

UNI (FAX NO. 23355841)

D.G. NATIONAL DISASTER RESPONSE FORCE (NDRF) (FAX NO. 26105912, 2436 3260)

DIRECTOR, PUNCTUALITY, INDIAN RAILWAYS (FAX NO. 23388503)

CHIEF SECRETARY, WEST BENGAL (FAX NO. 033-22144328)

CHIEF SECRETARY, ODISHA (FAX NO. 0674-2536660)

CHIEF SECRETARY, ANDHRA PRADESH (FAX NO. 0863-2441029, 08645-246600)

CHIEF SECRETARY, CHHATTISGARH (FAX NO. 0771-2221206)

CHIEF SECRETARY, JHARKHAND (FAX NO. 0651-2400255)

CHIEF SECRETARY, KARNATAKA (FAX NO. 080-22258913)

CHIEF SECRETARY, MAHARASHTRA (FAX NO. 022- 22028594)

CHIEF SECRETARY, GUJARAT (FAX NO. 079-23250305)

CHIEF SECRETARY, GOVT. OF TELANGANA (FAX NO. 040-23453700)

Sub: Depression weakened into a Well Marked Low Pressure Area over Coastal Odisha

The depression over Odisha coast near Chilika Lake moved northwestwards during past 6 hours and weakened into a well marked low pressure area over coastal Odisha at 1730 hours IST of today, the 20th July, 2024.

It is likely to move northwestwards across Odisha & Chhattisgarh and weaken gradually into a low pressure area during next 24 hours.

Warnings:

(i) Rainfall warning

Gangetic West Bengal: Light to moderate rainfall is very likely at most places on 20th July.

Odisha:

- ❖ **South Odisha:** Light to moderate rainfall at most places with heavy to very heavy rainfall at a few places is very likely over South Odisha on 20th July
- ❖ **North Odisha:** Light to moderate rainfall is very likely at most places with heavy rainfall at isolated places on 20th July.

Chattisgarh:

- ❖ **South Chattisgarh:** Light to moderate rainfall at most places with heavy to extremely heavy rainfall at isolated places is very likely on 20th and isolated heavy to very heavy rainfall on 21st July.
- ❖ **North Chattisgarh:** Light to moderate rainfall at most places with heavy to very heavy rainfall at isolated places is very likely on 20th and isolated heavy rainfall on 21st July.

Spatial rainfall distribution: Isolated: <25%, A few: 26-50%, Many: 51-75%, Most: 76-100%

Rainfall amount (mm): Heavy rain: 64.5 – 115.5, Very heavy rain: 115.6 – 204.4, Extremely heavy rain: 204.5 or more.

Andhra Pradesh:

- ❖ **North Coastal Andhra Pradesh:** Light to moderate rainfall at most places with heavy to very heavy rainfall at isolated places is very likely on 20th July and heavy rainfall at isolated places is likely on 21st July.
- ❖ **South Coastal Andhra Pradesh:** Light to moderate rainfall at most places with heavy rainfall at isolated places is likely over South Coastal Andhra Pradesh on 20th July.

Vidarbha: Light to moderate rainfall at most places with heavy to very heavy rainfall at a few places on 20th & 21st July and extremely heavy rainfall at isolated places on 20th July.

Telangana: Light to moderate rainfall at most places with heavy to very heavy rainfall at isolated places is very likely on 20th July and heavy rainfall at isolated places is likely on 21st July.

(ii) Wind warning

Squally weather with wind speed reaching 40-50 kmph gusting to 60 kmph is very likely to prevail over northwest and adjoining westcentral Bay of Bengal and along and off North Andhra Pradesh, Odisha, West Bengal & adjoining Bangladesh coasts on 20th July and would decrease gradually thereafter.

(iv) Sea Condition: Rough to very rough sea condition is very likely to prevail over northwest and adjoining westcentral Bay of Bengal and along and off North Andhra Pradesh, Odisha, West Bengal & adjoining Bangladesh coasts on 20th July and would improve gradually thereafter.

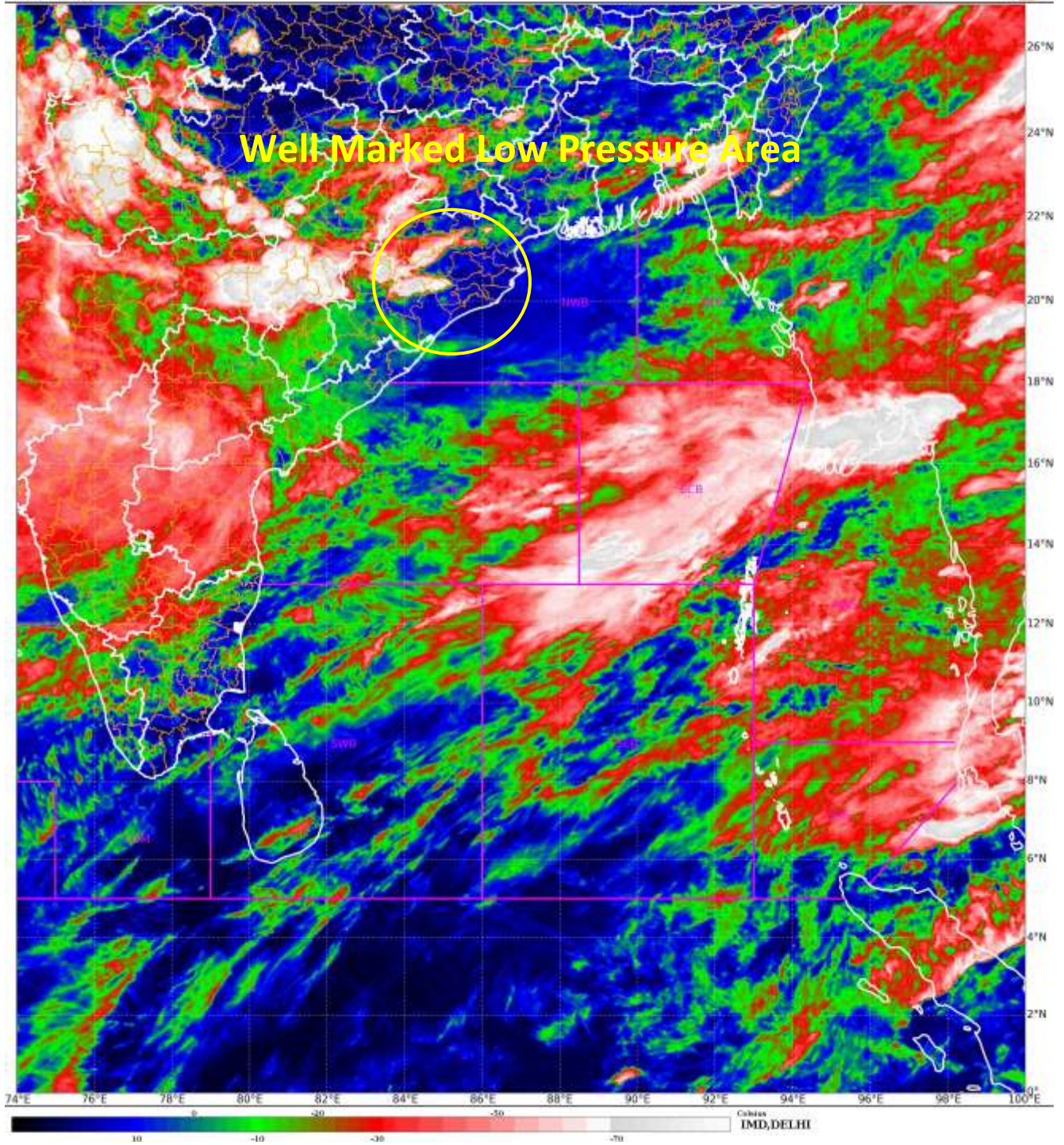
(v) Fishermen Warning

Fishermen are advised not to venture into northwest and adjoining westcentral Bay of Bengal and along & off North Andhra Pradesh, Odisha, West Bengal & adjoining Bangladesh coasts on 20th July.

This is the last bulletin in association with this system. However regular weather bulletins shall continue from the respective Meteorological Centres, Regional Meteorological Centres and National Weather Forecasting Centre (NWFC), New Delhi, India Meteorological Department in association with this system.

(A K Das)
Scientist-F, RSMC, New Delhi

Copy to: CRS, Pune/ACWC Kolkata/Chennai/Mumbai/CWC Bhubaneswar/CWC
Visakhapatnam/CWC Ahmedabad/MC Hyderabad/MC Raipur/MC Amravati/MC Ranchi/RMC Nagpur



Spatial rainfall distribution: Isolated: <25%, A few: 26-50%, Many: 51-75%, Most: 76-100%
Rainfall amount (mm): Heavy rain: 64.5 – 115.5, Very heavy rain: 115.6 – 204.4, Extremely heavy rain: 204.5 or more.



OBSERVED TRACK OF DEPRESSION OVER NORTHWEST AND ADJOINING WESTCENTRAL BAY OF BENGAL DURING 19th to 20th JULY, 2024.



DATE/TIME IN UTC
IST=UTC + 0530
L: LOW PRESSURE AREA
WML: WELL MARKED LOW PRESSURE AREA
D: DEPRESSION (17-27 KT)
DD: DEEP DEPRESSION (28-33 KT)
CS: CYCLONIC STORM (34-47 KT)
SCS: SEVERE CYCLONIC STORM (48-63KT)
VSCS: VERY SEVERE CYCLONIC STORM (64-89 KT)
ESCS: EXTREMELY SEVERE CYCLONIC STORM (90-119 KT)
SuCS: SUPER CYCLONIC STORM (\geq 120 KT)

- LESS THAN 34 KT
- 34-47 KT
- \geq 48 KT
- OBSERVED TRACK
- FORECAST TRACK
- CONE OF UNCERTAINTY

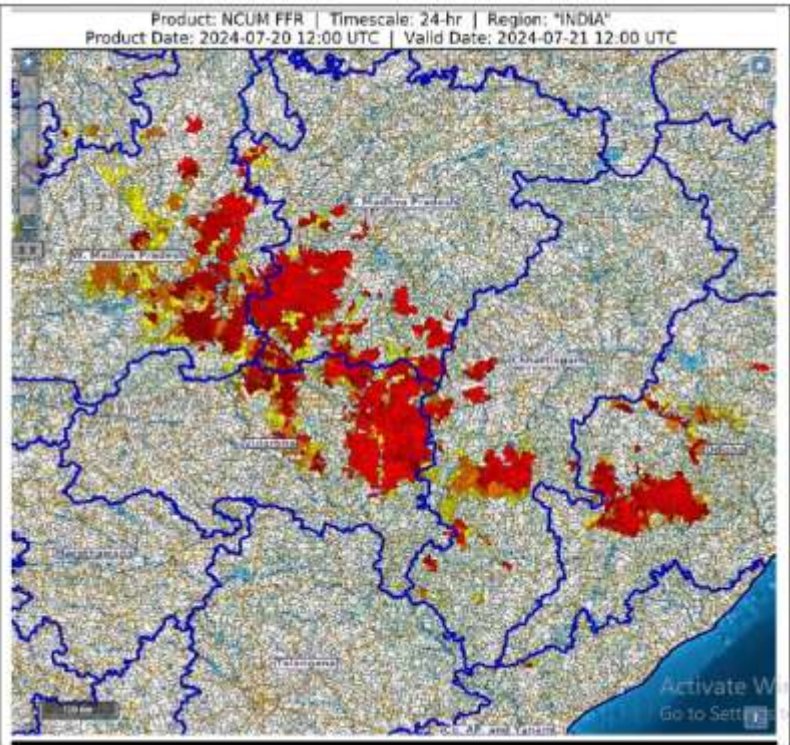
Spatial rainfall distribution: Isolated: <25%, A few: 26-50%, Many: 51-75%, Most: 76-100%
Rainfall amount (mm): Heavy rain: 64.5 – 115.5, Very heavy rain: 115.6 – 204.4, Extremely heavy rain: 204.5 or more.







Flash Flood Guidance

24 hours Outlook for the Flash Flood Risk (FFR) till 1730 IST of 21-07-2024 :

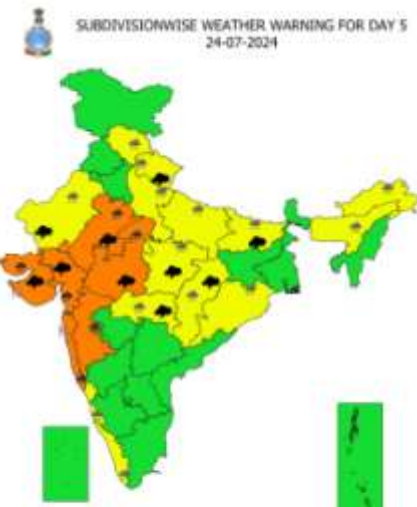
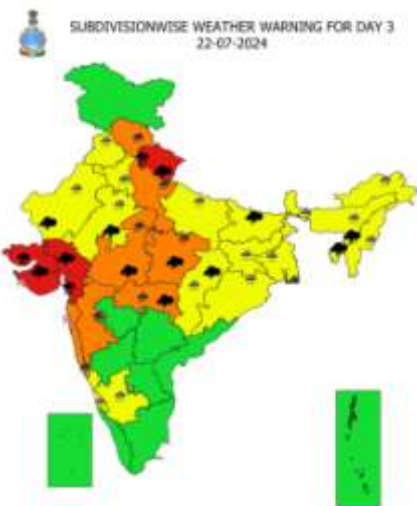
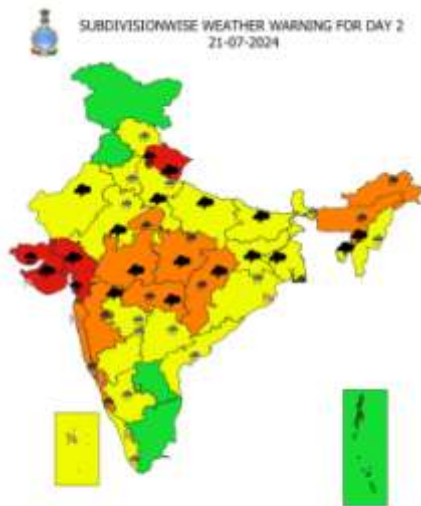
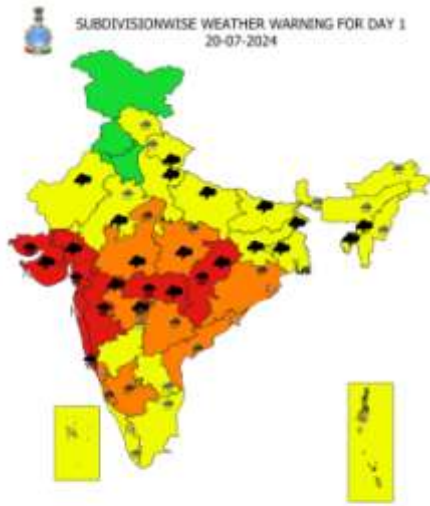
Low to Moderate flash flood risk likely over few watersheds & neighbourhoods of **Chhattisgarh, East Madhya Pradesh, Vidarbha, West Madhya Pradesh and Odisha** Met Sub-divisions during next 24 hours.

Surface runoff/ Inundation may occur at some fully saturated soils & low-lying areas over AoC as shown in map due to expected rainfall occurrence in next 24 hours.



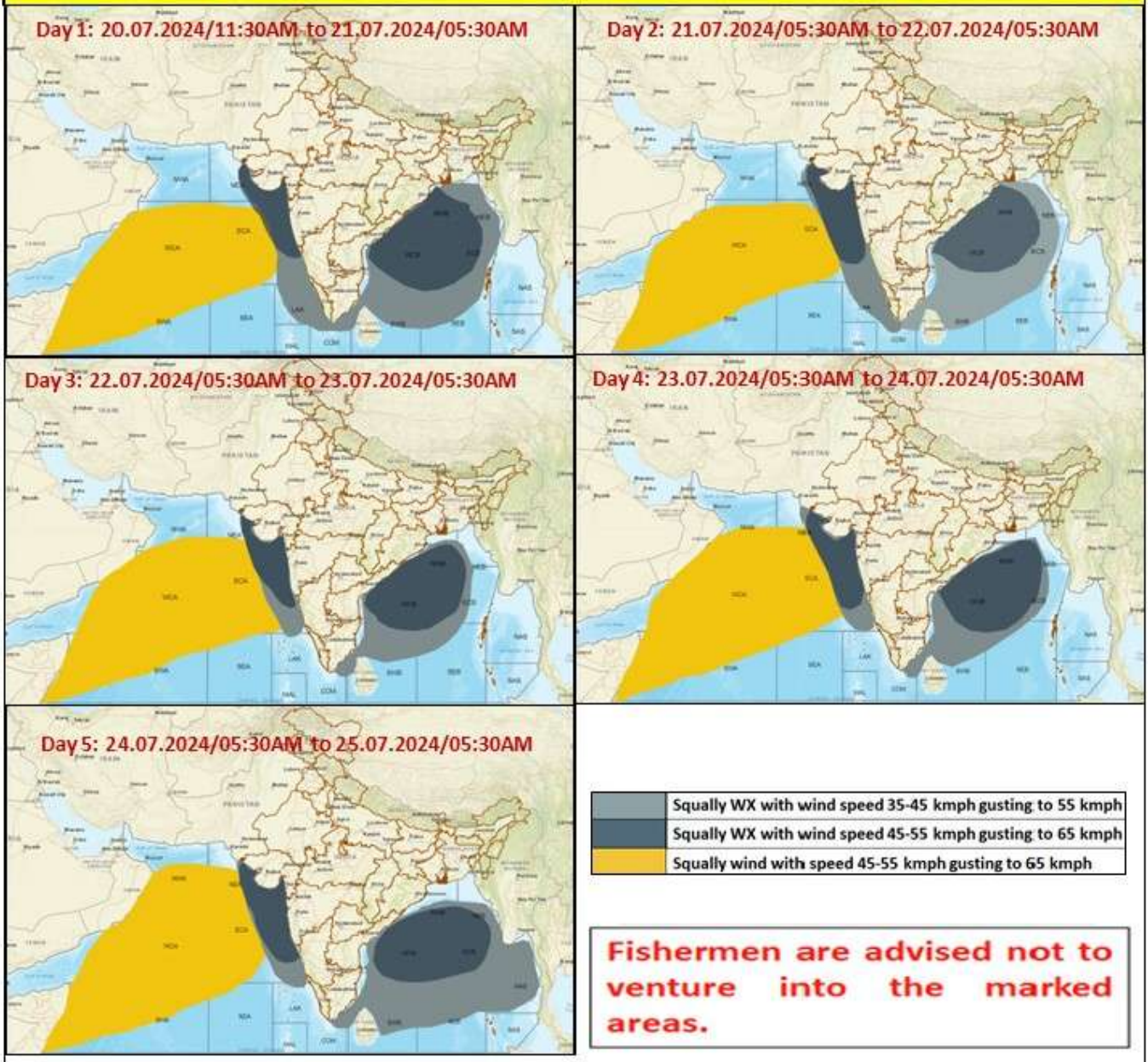
Flash Flood Threat	Flash Flood Risk
 High Threat (Take Action)	 High Risk (Take Action)
 Moderate threat (Be Prepared)	 Moderate Risk (Be Prepared)
 Low Threat (Be Updated)	 Low Risk (Be Updated)

Spatial rainfall distribution: Isolated: <25%, A few: 26-50%, Many: 51-75%, Most: 76-100%
 Rainfall amount (mm): Heavy rain: 64.5 – 115.5, Very heavy rain: 115.6 – 204.4, Extremely heavy rain: 204.5 or more.



Spatial rainfall distribution: Isolated: <25%, A few: 26-50%, Many: 51-75%, Most: 76-100%
 Rainfall amount (mm): Heavy rain: 64.5 – 115.5, Very heavy rain: 115.6 – 204.4, Extremely heavy rain: 204.5 or more.

Fishermen Warning Graphics



Spatial rainfall distribution: Isolated: <25%, A few: 26-50%, Many: 51-75%, Most: 76-100%
 Rainfall amount (mm): Heavy rain: 64.5 – 115.5, Very heavy rain: 115.6 – 204.4, Extremely heavy rain: 204.5 or more.