



**India Meteorological Department
(Ministry of Earth Sciences)**

SPECIAL BULLETIN NO. 2

TIME OF ISSUE: 1400 HOURS IST **DATED: 23.05.2024**
FROM: INDIA METEOROLOGICAL DEPARTMENT (FAX NO. 24643965/24699216/24623220)

TO: CONTROL ROOM, NDM, MINISTRY OF HOME AFFAIRS (FAX.NO. 23093750)
CONTROL ROOM NDMA (FAX.NO. 26701729)
CABINET SECRETARIAT (FAX.NO.23012284, 23018638)
PS TO HON'BLE MINISTER FOR S & T AND EARTH SCIENCES (FAX NO.23316745)
SECRETARY, MOES (FAX NO. 24629777)
H.Q. (INTEGRATED DEFENCE STAFF AND CDS) (FAX NO. 23005137/23005147)
DIRECTOR GENERAL, DOORDARSHAN (23385843)
DIRECTOR GENERAL, AIR (23421105, 23421219)
PIB MOES (FAX NO. 23389042)
UNI (FAX NO. 23355841)
D.G. NATIONAL DISASTER RESPONSE FORCE (NDRF) (FAX NO. 26105912, 2436 3260)
DIRECTOR, PUNCTUALITY, INDIAN RAILWAYS (FAX NO. 23388503)
CHIEF SECRETARY, ANDAMAN & NICOBAR ISLANDS (FAX NO. 03192- 232656)
CHIEF SECRETARY, GOVT. WEST BENGAL (FAX NO. 033-22144328)
CHIEF SECRETARY, GOVT. OF ODISHA (FAX NO. 0674 -2536660)
CHIEF SECRETARY, GOVT. OF ANDHRA PRADESH (FAX NO. 0863-2441029, 08645-246600)
CHIEF SECRETARY, GOVT. OF TAMIL NADU (FAX NO. 044-25672304)
CHIEF SECRETARY, GOVT. OF PUDUCHERRY (FAX NO. 0413-2337575, 2334145)

Sub: Well-Marked Low pressure Area over Westcentral and adjoining South Bay of Bengal (Pre-Cyclone Watch for West Bengal Coast)

Yesterday's Low Pressure Area over southwest & adjoining westcentral Bay of Bengal moved northeastwards and lay as a well-marked low pressure area over westcentral & adjoining south Bay of Bengal at 0830 hrs IST of today, the 23rd May, 2024.

It is very likely to continue to move northeastwards and concentrate into a Depression over central parts of Bay of Bengal by morning of 24th May, 2024. Thereafter, it is very likely to continue to move northeastwards, intensify further into a cyclonic storm over eastcentral Bay of Bengal by 25th May morning. Subsequently, it would move nearly northwards and reach near Bangladesh and adjoining West Bengal coasts by 26th May evening as a severe cyclonic storm.

Warnings (Graphics Attached):

Heavy Rainfall Warning:

- (a) Light to moderate rainfall at most places with heavy to very heavy rainfall at isolated places is likely over coastal districts of West Bengal and adjoining districts of North Odisha on 26th and 27th May.
- (b) Light to moderate rainfall at most places with heavy to very heavy rainfall at isolated places is likely over Mizoram, Tripura and South Manipur on 26th and 27th May.

Wind Warning:

- ❖ Squally weather with wind speed reaching 40-50 kmph gusting to 60 kmph is likely to prevail over central and adjoining South Bay of Bengal on 23rd May. It would become 50-60 kmph gusting to 70 kmph over central Bay of Bengal on 24th May.
- ❖ It would extend to adjoining areas of North Bay of Bengal with gale wind speed reaching 60-70 kmph gusting to 80 kmph from 25th May morning. It would further increase becoming 100-110 kmph gusting to 120 kmph over north Bay of Bengal and 70-80 kmph gusting to 90 kmph over adjoining central Bay of Bengal from 26th morning for subsequent 24 hours.
- ❖ Squally wind speed reaching 40-50 kmph gusting to 60 kmph is likely along & off Bangladesh, West Bengal and adjoining North Odisha coasts from 25th May evening.
- ❖ Squally wind speed reaching 40-50 kmph gusting to 60 kmph is likely over Andaman Islands and North Andaman Sea on 23rd and 24th May.

Sea condition:

Sea condition is likely to be:

- ❖ Rough to very rough over central and adjoining south Bay of Bengal from 23rd May and over North Bay of Bengal from 24th May evening. It would become high over central Bay of Bengal from 25th May morning and High to Very High over North Bay of Bengal from 25th evening till 27th May morning.
- ❖ Rough to very rough along & off Bangladesh, West Bengal and adjoining North Odisha coasts from 25th May evening and high along & off Bangladesh and West Bengal coasts from 26th noon onwards till 27th May morning.
- ❖ Rough to very rough over Andaman Islands and North Andaman Sea on 23rd and 24th May.

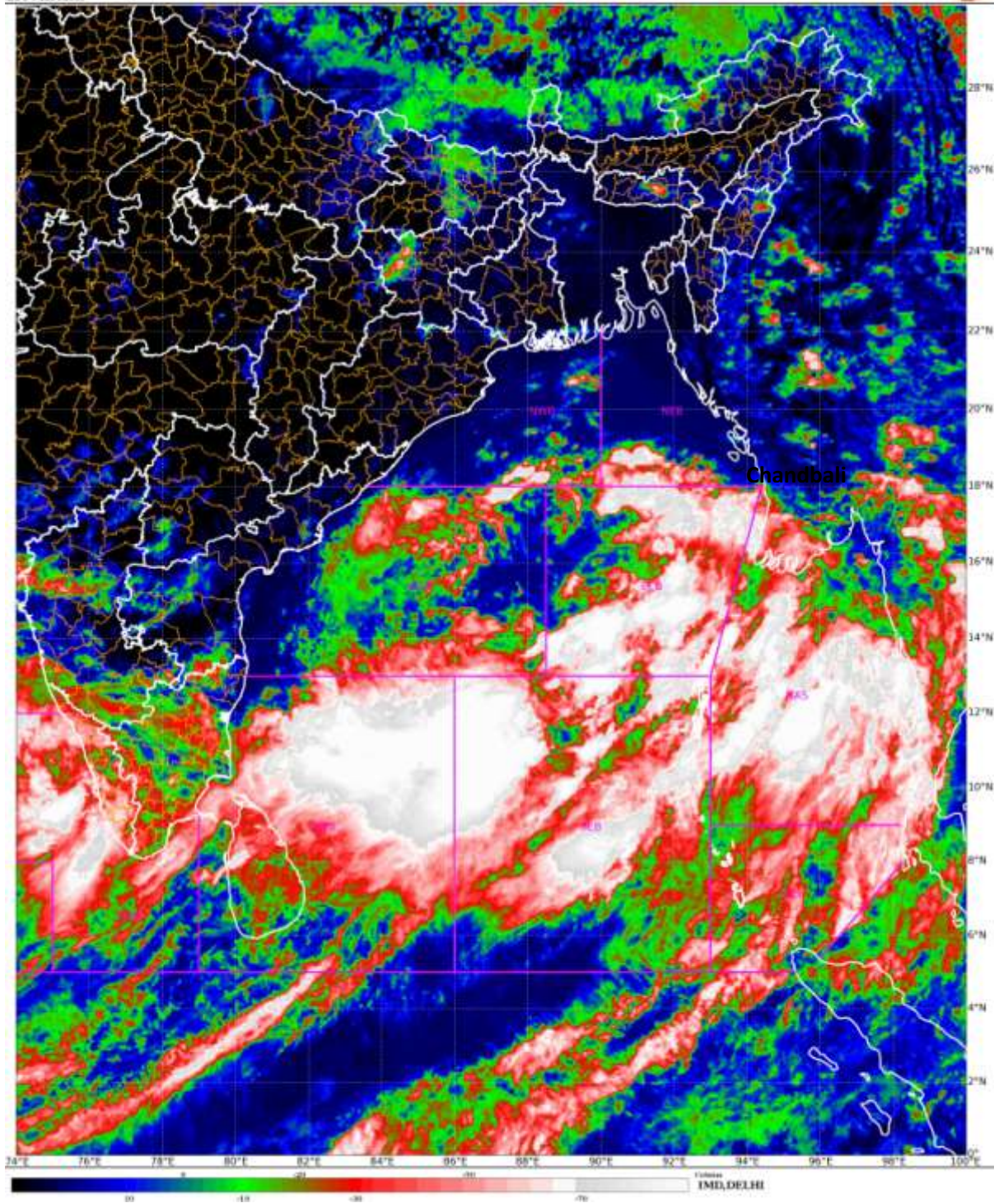
Fishermen Warning:

Fishermen are advised not to venture into south Bay of Bengal till 24th May, central Bay of Bengal till 26th May and North Bay of Bengal from 24th May onwards till morning of 27th May. Fishermen out at sea are advised to return to the coast.

The system is under continuous surveillance and the next message will be issued at 1230 hours IST of tomorrow, the 24th May, 2024.

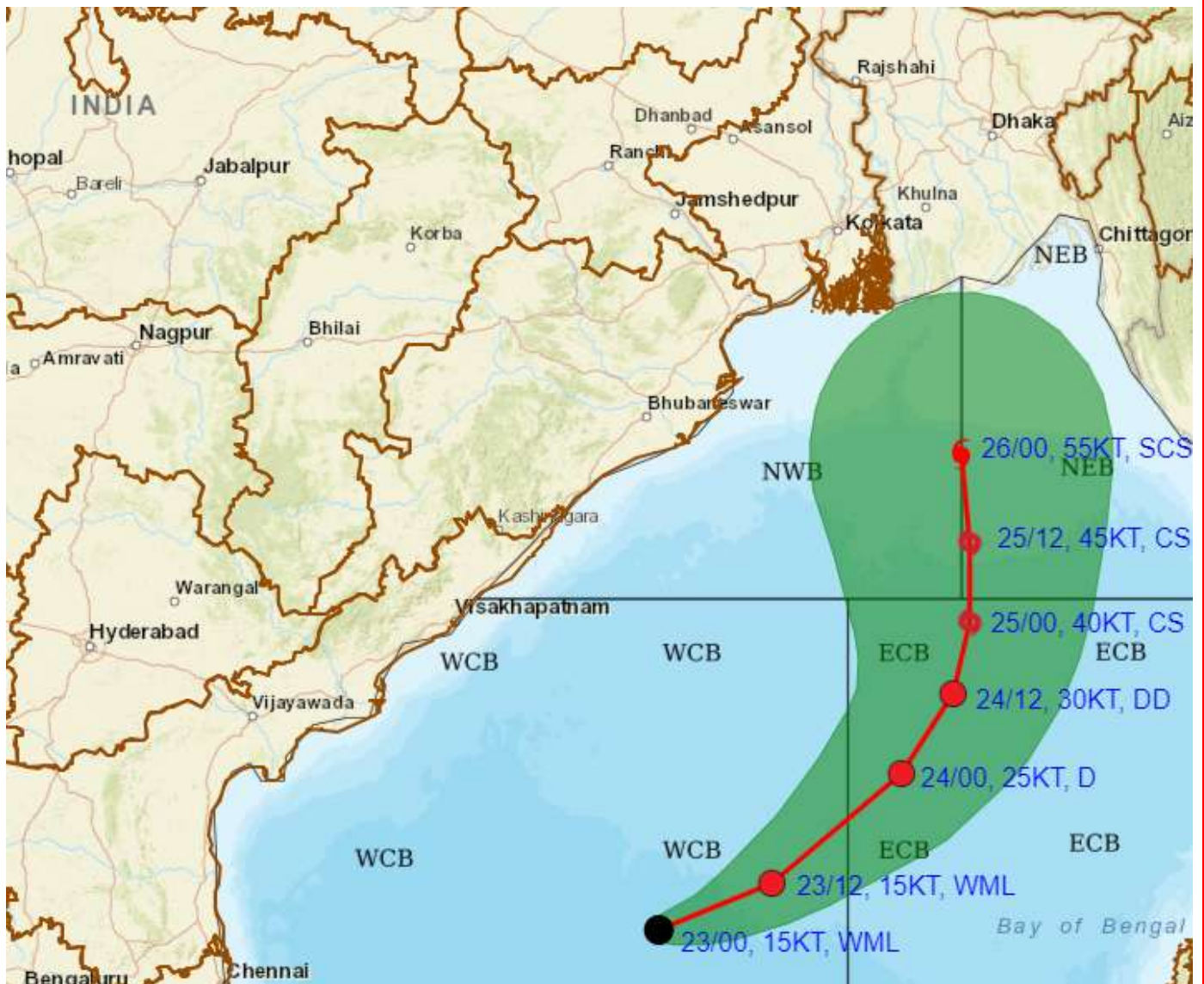
(Dr. Ananda Kumar Das)
Scientist F, Cyclone Warning Division, New Delhi

Copy to: ACWC Kolkata/ ACWC Chennai/ CWC Bhubaneswar/CWC Visakhapatnam/MO Port Blair





PRE-GENESIS FORECAST TRACK ALONGWITH CONE OF UNCERTAINTY IN ASSOCIATION WITH LOW PRESSURE AREA OVER WESTCENTRAL & ADJOINING SOUTHWEST BAY OF BENGAL BASED ON 0300 UTC (0830 IST) OF 23RD MAY 2024.

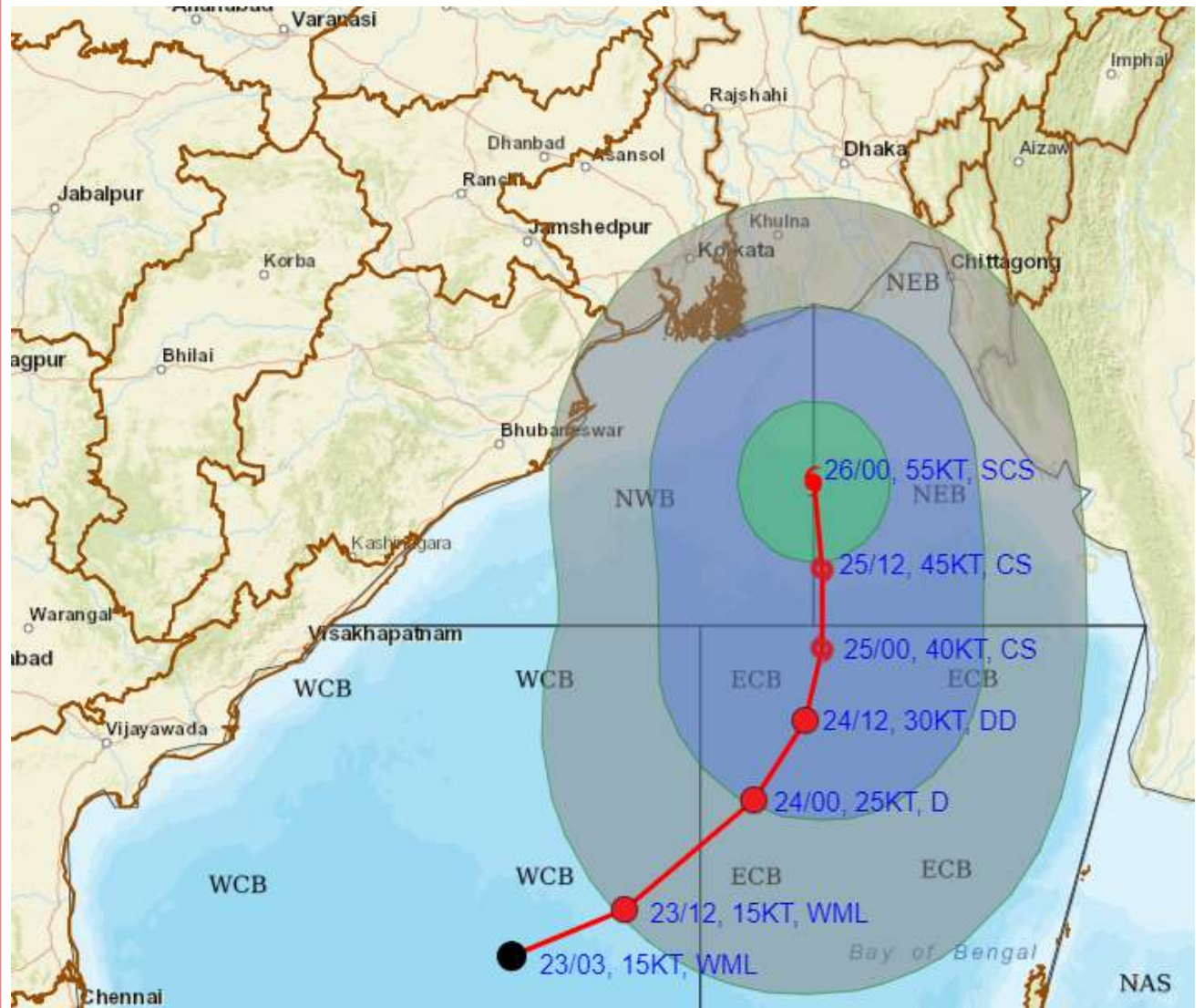


DATE/TIME IN UTC
 IST=UTC + 0530
 L: LOW PRESSURE AREA
 WML: WELL MARKED LOW PRESSURE AREA
 D: DEPRESSION (17-27 KT)
 DD: DEEP DEPRESSION (28-33 KT)
 CS: CYCLONIC STORM (34-47 KT)
 SCS: SEVERE CYCLONIC STORM (48-63KT)
 VSCS: VERY SEVERE CYCLONIC STORM (64-89 KT)
 ESCS: EXTREMELY SEVERE CYCLONIC STORM (90-119 KT)
 SuCS: SUPER CYCLONIC STORM (≥ 120 KT)

- LESS THAN 34 KT
- 34-47 KT
- ≥ 48 KT
- OBSERVED TRACK
- FORECAST TRACK
- CONE OF UNCERTAINTY



PRE-GENESIS FORECAST TRACK ALONGWITH QUADRANT WIND DISTRIBUTION IN ASSOCIATION WITH LOW PRESSURE AREA OVER WESTCENTRAL & ADJOINING SOUTHWEST BAY OF BENGAL BASED ON 0300 UTC (0830 IST) OF 23RD MAY 2024.



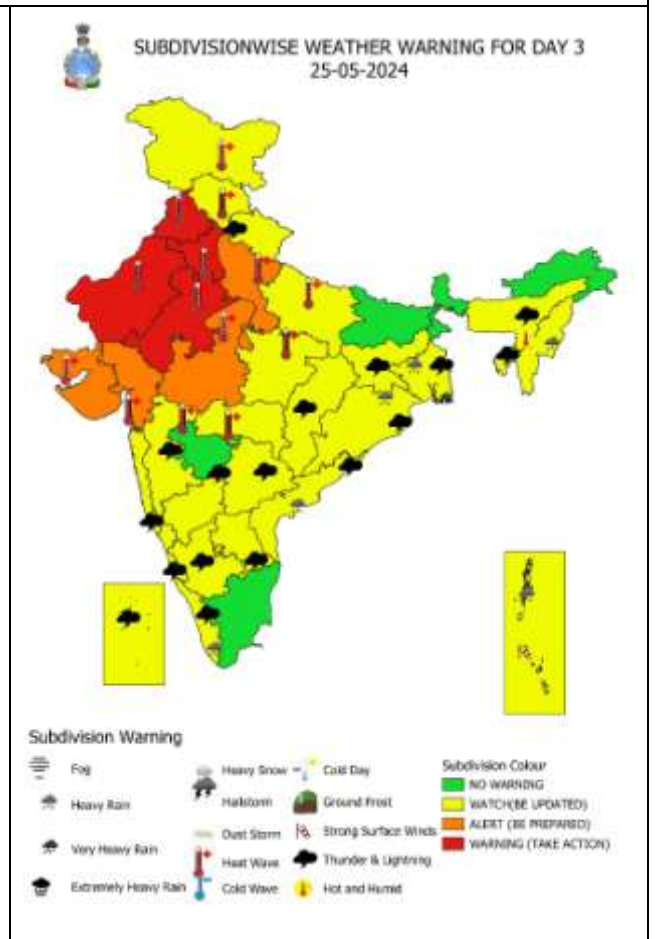
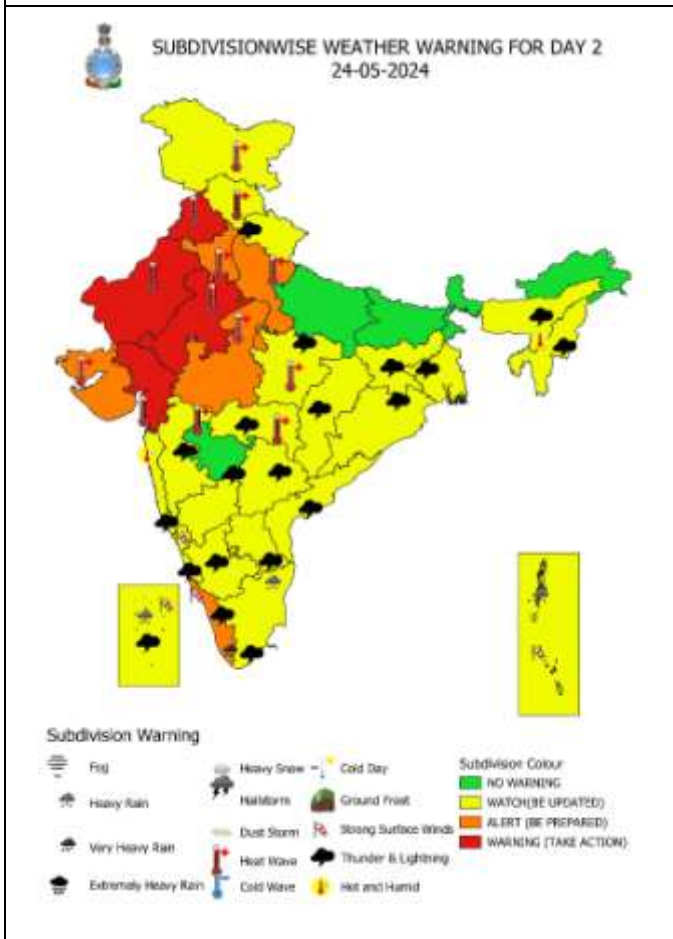
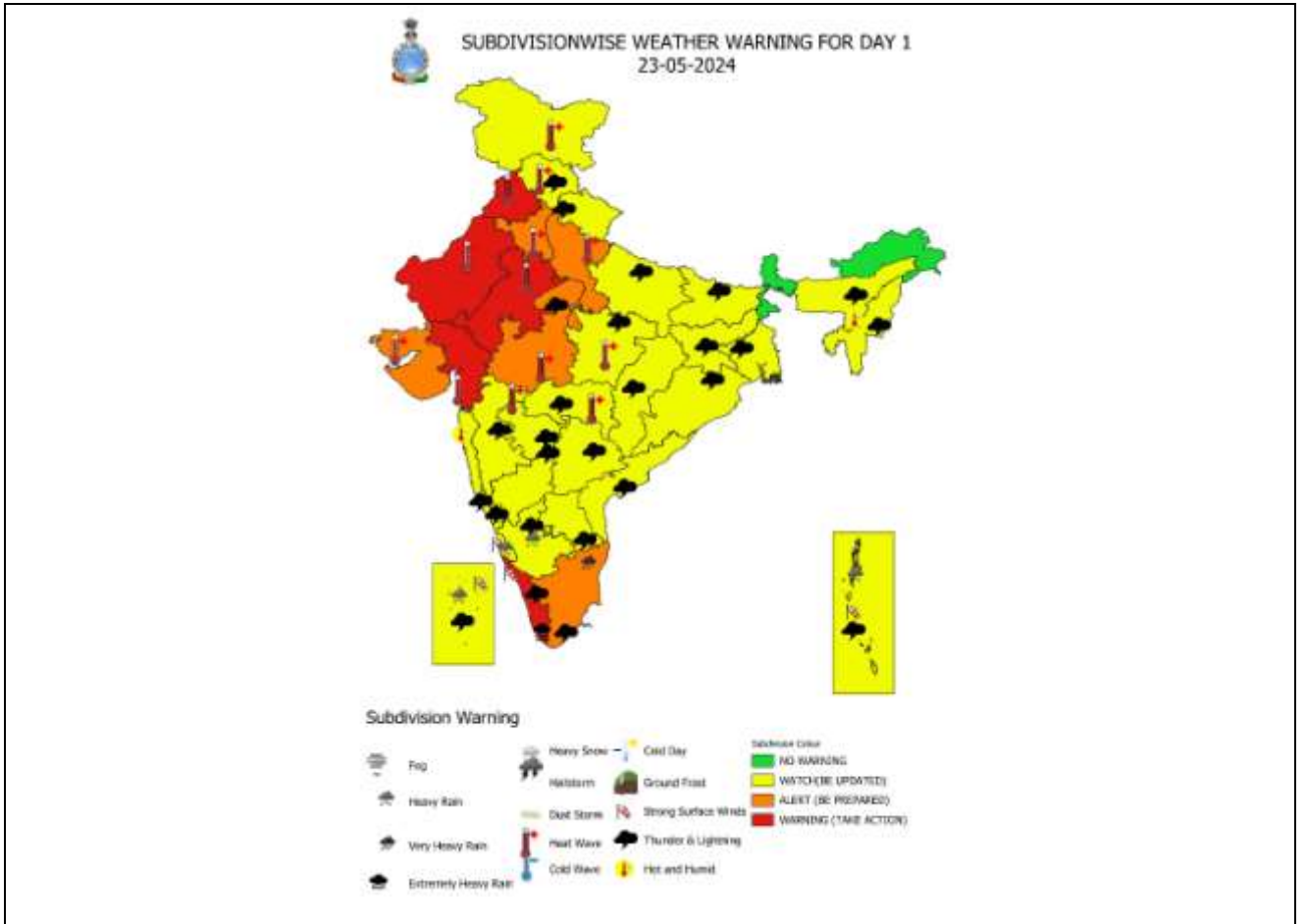
DATE/TIME IN UTC
 IST=UTC + 0530
 L: LOW PRESSURE AREA
 WML: WELL MARKED LOW PRESSURE AREA
 D: DEPRESSION (17-27 KT)
 DD: DEEP DEPRESSION (28-33 KT)
 CS: CYCLONIC STORM (34-47 KT)
 SCS: SEVERE CYCLONIC STORM (48-63KT)
 VSCS: VERY SEVERE CYCLONIC STORM (64-89 KT)
 ESCS: EXTREMELY SEVERE CYCLONIC STORM (90-119 KT)
 SuCS: SUPER CYCLONIC STORM (≥ 120 KT)

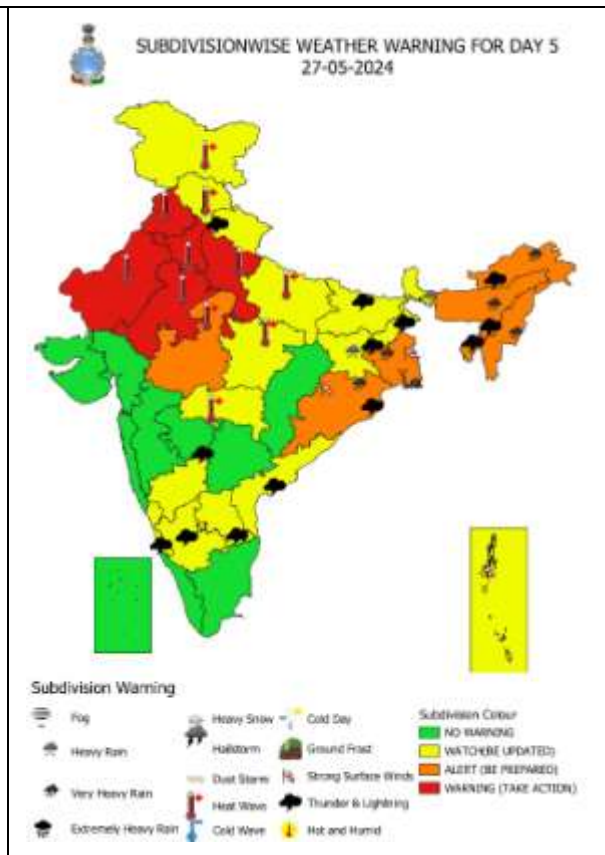
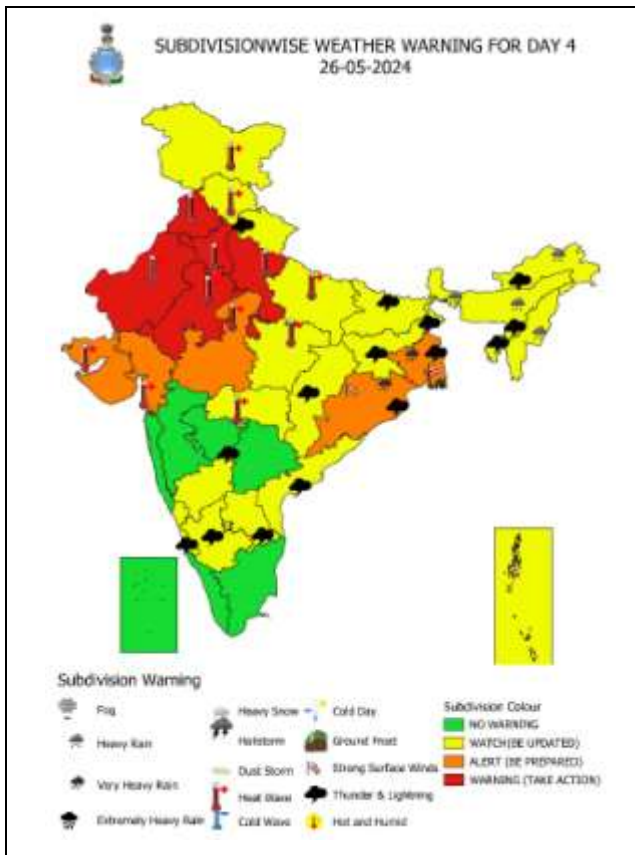
● LESS THAN 34 KT
 ○ 34-47 KT
 ⊙ ≥ 48 KT
 — OBSERVED TRACK
 — FORECAST TRACK
 ● CONE OF UNCERTAINTY
 AREA OF MAXIMUM SUSTAINED WIND SPEED:
 ■ 28-33 KT (52-61 KMPH)
 ■ 34-49 KT (62-91 KMPH)
 ■ 50-63 KT (92-117 KMPH)
 ■ ≥ 64 KT (≥118 KMPH)

IMPACT OVER THE SEA

MSW (knot/kmph)	Impact	Action
28-33 (52-61)	Very rough seas	Total suspension of fishing operations
34-49 (62-91)	High to very high seas	Total suspension of fishing operations
50-63 (92-117)	Very high seas	Total suspension of fishing operations
≥ 64 (≥118)	Phenomenal	Total suspension of fishing operations

Multi-Hazard Warning Graphics





Fishermen Warning Graphics

Day 1: 23.05.2024/11:30AM to 24.05.2024/05:30AM



Day 2: 24.05.2024/05:30AM to 25.05.2024/05:30AM



Day 3: 25.05.2024/05:30AM to 26.05.2024/05:30AM



Day 4: 26.05.2024/05:30AM to 27.05.2024/05:30AM



Day 5: 27.05.2024/05:30AM to 28.05.2024/05:30AM



Squally WX with wind speed 35-45 kmph gusting to 55 kmph

Squally WX with wind speed 45-55 kmph gusting to 65 kmph

Squally wind with speed 45-55 kmph gusting to 65 kmph

Squally wind with speed 50-60 kmph gusting to 70 kmph

CS with Gale wind speed 60-90 kmph gusting to 110 kmph

SCS with Gale wind speed 90-110 kmph gusting to 120 kmph

Fishermen are advised not to venture into the marked areas.