



**India Meteorological Department  
(Ministry of Earth Sciences)**

**NATIONAL BULLETIN NO. 11 (AS/02/2024)**

**TIME OF ISSUE: 2130 HOURS IST**

**DATED: 15.10.2024**

**FROM: INDIA METEOROLOGICAL DEPARTMENT**

**(FAX NO. 24643965/24699216/24623220)**

**TO: CONTROL ROOM, NDM, MINISTRY OF HOME AFFAIRS (FAX.NO. 23093750)**

**CONTROL ROOM NDMA (FAX.NO. 26701729)**

**CABINET SECRETARIAT (FAX.NO.23012284, 23018638)**

**PS TO HON'BLE MINISTER FOR S & T AND EARTH SCIENCES (FAX NO.23316745)**

**SECRETARY, MOES (FAX NO. 24629777)**

**H.Q. (INTEGRATED DEFENCE STAFF AND CDS) (FAX NO. 23005137/23005147)**

**DIRECTOR GENERAL, DOORDARSHAN (23385843)**

**DIRECTOR GENERAL, AIR (23421105, 23421219)**

**PIB MOES (FAX NO. 23389042)**

**UNI (FAX NO. 23355841)**

**D.G. NATIONAL DISASTER RESPONSE FORCE (NDRF) (FAX NO. 26105912, 2436 3260)**

**DIRECTOR, PUNCTUALITY, INDIAN RAILWAYS (FAX NO. 23388503)**

**CHIEF SECRETARY, MAHARASHTRA (FAX NO. 022- 22028594)**

**CHIEF SECRETARY, GUJARAT (FAX NO. 079-23250305)**

**CHIEF SECRETARY, DAMAN & DIU (FAX NO. 0260-2230775)**

**CHIEF SECRETARY, DADRA & NAGAR HAVELI (FAX NO. 0260-2645466)**

**CHIEF SECRETARY, GOA (FAX NO. 0832-2415201)**

**CHIEF SECRETARY, KARNATAKA (FAX NO. 080-22258913)**

**CHIEF SECRETARY, KERALA (FAX NO. 0471-2327176)**

**CHIEF SECRETARY, LAKSHADWEEP (FAX NO. 04896-268124)**

**CHIEF SECRETARY, TAMIL NADU (FAX NO. 044-25672304)**

**CHIEF SECRETARY, ANDHRA PRADESH (FAX NO. 0863-2441029)**

**CHIEF SECRETARY, PUDUCHERRY (FAX NO. 0413-2334145)**

**Sub: (A) Depression over southwest Bay of Bengal and (B) Depression over Westcentral Arabian Sea off Oman coast**

**(A) Depression over southwest Bay of Bengal**

The well marked low pressure area over southwest and adjoining southeast Bay of Bengal moved west-northwestwards, intensified in to a Depression and lay centered at 1730 hours IST of today, the 15th October 2024 over southwest Bay of Bengal near latitude 11.4° N and longitude 84.4° E, about 490 km east-southeast of Chennai (Tamil Nadu), 500 km east-southeast of Puducherry and 590 km southeast of Nellore (Andhra Pradesh).

It is likely to move west-northwestwards and cross north Tamil Nadu - South Andhra Pradesh coasts between Puducherry and Nellore, close to Chennai during early morning of 17<sup>th</sup> October as a depression.

Forecast track and intensity are given in the following table:

Date/Time (IST)	Position (Lat. °N/ Long. °E)	Maximum Sustained Surface Wind Speed (Kmph)	Category of Cyclonic Disturbance
15.10.24/1730	11.4/84.4	35-45 gusting to 55	Depression
16.10.24/0530	11.9/83.0	40-50 gusting to 60	Depression
16.10.24/1730	12.6/81.5	40-50 gusting to 60	Depression
17.10.24/0530	13.2/80.4	40-50 gusting to 60	Depression
17.10.24/1730	13.7/79.7	40-50 gusting to 60	Depression
18.10.24/0530	14.3/78.5	30-40 gusting to 50	Well Marked Low pressure area

## **Warnings:**

### **(i) Rainfall Warning:**

**Tamil Nadu & Puducherry:** Light to moderate rainfall over most places with heavy to very heavy rainfall at isolated places over Tamil Nadu & Puducherry and extremely heavy rainfall at isolated places over north Tamil Nadu on 15<sup>th</sup> October.

Light to moderate rainfall over most places with heavy to very heavy rainfall at a few places with extremely heavy rainfall at isolated places is very likely over north Tamil Nadu & Puducherry on 16<sup>th</sup> October and isolated heavy to very heavy rainfall over north interior Tamil Nadu on 17<sup>th</sup> October.

Light to moderate rainfall over most places with heavy rainfall at isolated places is very likely over south Tamil Nadu during 15<sup>th</sup> to 17<sup>th</sup> October.

**South Andhra Pradesh & Rayalaseema** Light to moderate rainfall over most places with heavy to very heavy rainfall at isolated places is very likely on 15<sup>th</sup>; heavy to very heavy rainfall at a few places with extremely heavy rainfall at isolated places is likely on 16<sup>th</sup> October and heavy rainfall at isolated places is likely on 17<sup>th</sup> October.

**Kerala & south Interior Karnataka:** Light to moderate rainfall over most places with heavy to very heavy rainfall at isolated places is likely over Kerala and south Interior Karnataka during 15<sup>th</sup> to 17<sup>th</sup> October.

### **(ii) Wind Warning:**

Squally weather with wind speed reaching 35-45 kmph gusting 55 kmph is prevailing over southwest and adjoining southeast & westcentral Bay of Bengal. It is likely to increase becoming squally wind speed reaching 40-50 kmph gusting to 60 kmph over southwest and adjoining westcentral Bay of Bengal and along & off Tamil Nadu, Puducherry and south Andhra Pradesh coasts till 17<sup>th</sup> October and decrease gradually thereafter.

### **(iii) Sea Condition:**

Rough Sea condition is prevailing over southeast and adjoining southwest & westcentral Bay of Bengal. It is likely to become Rough to very Rough Sea condition over southwest & adjoining westcentral Bay of Bengal and along & off Tamil Nadu, Puducherry and south Andhra Pradesh coasts till 17<sup>th</sup> October and improve gradually thereafter.

### **(iv) Fishermen Warning:**

Fishermen are advised not to venture into

- Southeast and adjoining central Bay of Bengal on 15<sup>th</sup> October.
- Southwest and adjoining westcentral Bay of Bengal from 15<sup>th</sup> to 17<sup>th</sup> October.
- Fishermen out at sea are advised to return to coasts.

### **(v) Flash Flood Guidance:**

#### **24 hours Outlook for the Flash Flood Risk (FFR) till 1730 IST of 16-10-2024 :**

Moderate flash flood risk likely over few watersheds & neighbourhoods of following Met Sub-divisions during next 24 hours.

**Coastal AP & Yanam** -Nellore district.

**Rayalaseema** – Chittoor and Kadapa districts.

**Tamil Nadu** - Chennai, Kanchipuram and Tiruvallur districts.

Surface runoff/ Inundation may occur at some fully saturated soils & low-lying areas over area of concern as shown in map due to expected rainfall occurrence in next 24 hours.

#### **❖ Impact Expected [Tamil Nadu (including Chennai) and Andhra Pradesh due to heavy rainfall]**

- Localized Flooding of roads, water logging in low lying areas and closure of underpasses mainly in urban areas of the above region.
- Occasional reduction in visibility due to heavy rainfall.
- Disruption of traffic in major cities and roadways due to water logging in roads and poor visibility due to heavy rain leading to increased travel time and incidents
- Likely disruption of marine and inland water transportation like small boats and trawlers.

- Minor damage to kutchra roads.
- Possibilities of damage to vulnerable structure.
- Localized Landslides/Mudslides/landslips/mud slips/land sinks/mud sinks.
- Damage to horticulture and standing crops in some areas due to inundation and wind.
- It may lead to riverine flooding in some river catchments (for riverine flooding please visit Webpage of Central Water Commission)

❖ **Action Suggested [Tamil Nadu and Andhra Pradesh due to heavy rainfall]**

- Fishermen are advised not to venture into
  - Southeast and adjoining central Bay of Bengal on 15th October.
  - Southwest and adjoining westcentral Bay of Bengal from 15th to 17th October.
  - Fishermen out at sea are advised to return to coasts.
- Judicious regulation of surface transports including railways and roadways and onshore/offshore activities.
- Check for traffic congestion on your route before leaving for your destination.
- Follow any traffic advisories that are issued in this regard.
- Avoid going to areas that face the water logging problems often.
- Avoid staying in vulnerable structure.

**Agromet advisories for Heavy Rainfall**

- Provide mechanical support to horticultural crops & staking to vegetables.
- Keep the harvested produce at safer place.

**(B) Depression over westcentral Arabian Sea off Oman coast**

The Depression over westcentral Arabian Sea off Oman coast moved northwestwards with a speed of 23 kmph during past 6 hours, and lay centred at 1730 hours IST of today, the 15th October, 2024 over the same region near latitude 18.3°N and longitude 58.8°E, about 180 km southeast of Duqm (Oman), 260 km south of Masirah (Oman) and 520 km east-northeast of Salalah (Oman).

It is likely to move nearly north-westwards and cross Oman coast close to Duqm (Oman) during early hours of tomorrow, the 16<sup>th</sup> October.

**Warnings:**

**(i) Wind warning:**

Squally wind speed reaching 40-50 kmph gusting to 60 kmph is likely to prevail over westcentral Arabian Sea and along and off Oman coast till morning of 16<sup>th</sup> October and decrease gradually thereafter.

**(ii) Sea condition:**

Rough to very rough sea condition is likely to prevail only over westcentral Arabian Sea and along & off Oman coast till morning of 16<sup>th</sup> October and improve gradually thereafter.

**(iii) Fishermen warning:**

Fishermen are advised not venture into westcentral Arabian Sea and along & off Oman coast till morning of 16<sup>th</sup> October.

❖ **Impact Expected over Sea area**

- Reduction of visibility over sea area due to sea spray induced by strong wind and heavy rainfall.
- Impact expected for boats, motor boats, smaller ships and trawler used for fishing and other purposes.

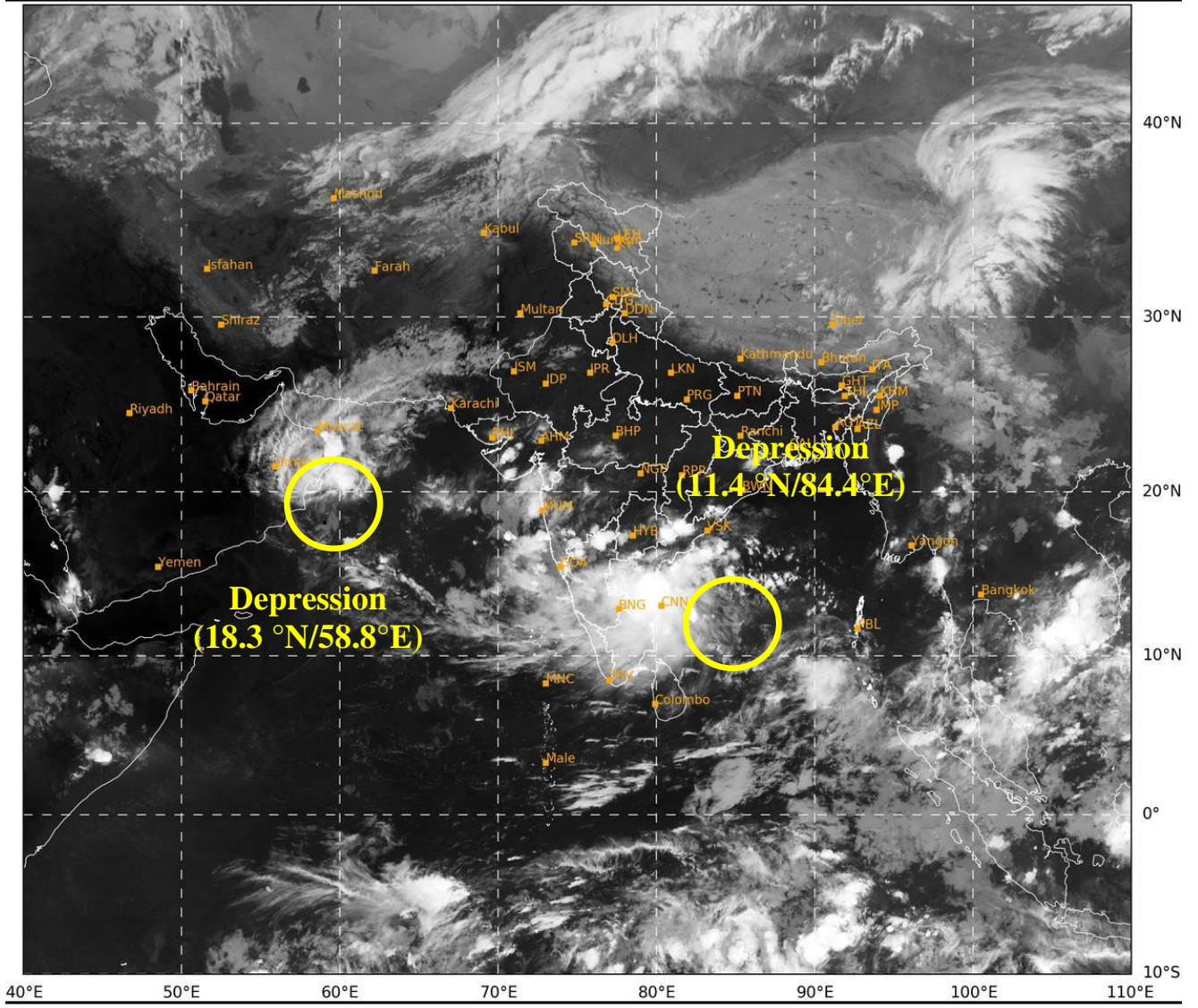
❖ **Action Suggested**

Fishermen are advised not venture into westcentral Arabian Sea and along & off Oman coast till morning of 16<sup>th</sup> October.

**Next bulletin will be issued at 0230 hours IST of tomorrow, the 16<sup>th</sup> October, 2024.**

**(Dr. Ananda Kumar Das)**  
**Scientist-F, RSMC & IMD, New Delhi**

*Copy to: ACWC Kolkata/ACWC Mumbai/ACWC Chennai/CWC Ahmedabad/CWC Bhubaneswar/CWC Vishakhapatnam CWC, Thiruvananthapuram/ MC, Goa*



429

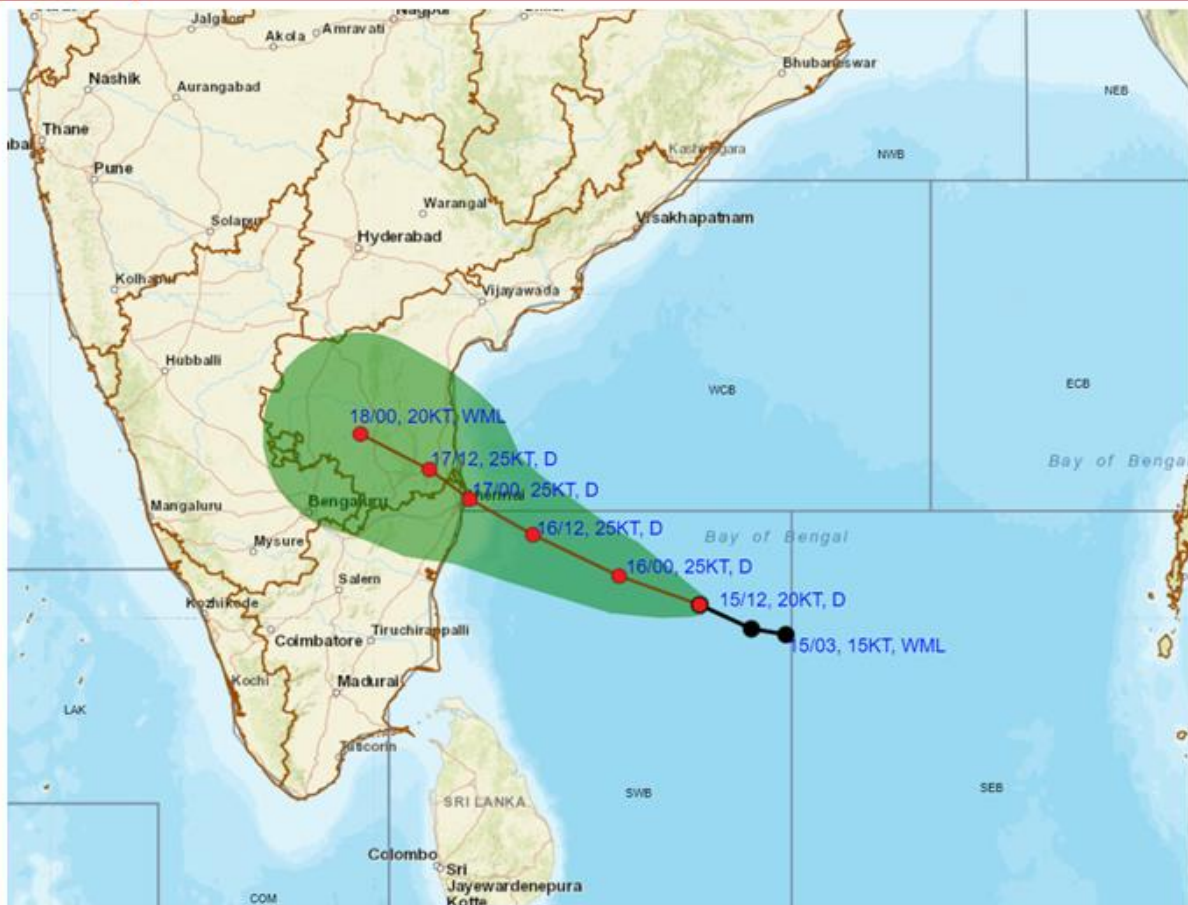
944



IMD, DELHI



**DEPRESSION OVER SOUTHWEST BAY OF BENGAL BASED ON 1200 UTC (1730 Hrs. IST) OF 15<sup>th</sup> OCTOBER, 2024**



DATE/TIME IN UTC

IST=UTC + 0530

L: LOW PRESSURE AREA

WML: WELL MARKED LOW PRESSURE AREA

D: DEPRESSION (17-27 KT)

DD: DEEP DEPRESSION (28-33 KT)

CS: CYCLONIC STORM (34-47 KT)

SCS: SEVERE CYCLONIC STORM (48-63KT)

VSCS: VERY SEVERE CYCLONIC STORM (64-89 KT)

ESCS: EXTREMELY SEVERE CYCLONIC STORM (90-119 KT)

SuCS: SUPER CYCLONIC STORM (≥ 120 KT)

● LESS THAN 34 KT

○ 34-47 KT

○ ≥ 48 KT

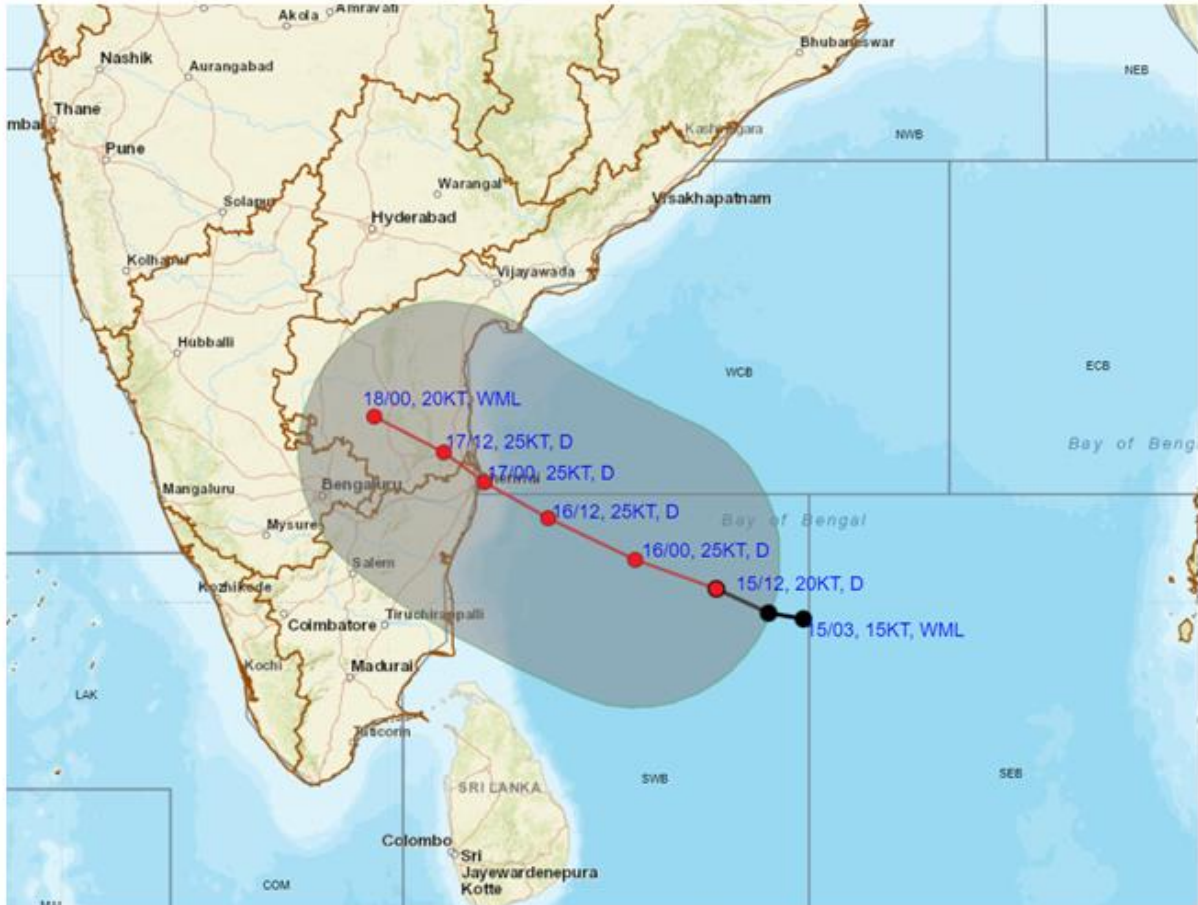
— OBSERVED TRACK

— FORECAST TRACK

▲ CONE OF UNCERTAINTY



**OBSERVED AND FORECAST TRACK ALONGWITH QUADRANT WIND DISTRIBUTION OF DEPRESSION OVER SOUTHWEST BAY OF BENGAL BASED ON 1200 UTC (1730 Hrs. IST) OF 15<sup>th</sup> OCTOBER, 2024**



DATE/TIME IN UTC

IST=UTC + 0530

L: LOW PRESSURE AREA

WML: WELL MARKED LOW PRESSURE AREA

D: DEPRESSION (17-27 KT)

DD: DEEP DEPRESSION (28-33 KT)

CS: CYCLONIC STORM (34-47 KT)

SCS: SEVERE CYCLONIC STORM (48-63KT)

● LESS THAN 34 KT

○ 34-47 KT

● ≥ 48 KT

— OBSERVED TRACK

— FORECAST TRACK

— CONE OF UNCERTAINTY

— AREA OF MAXIMUM SUSTAINED WIND SPEED:

— 20-30 KT (35-55 KMPH)

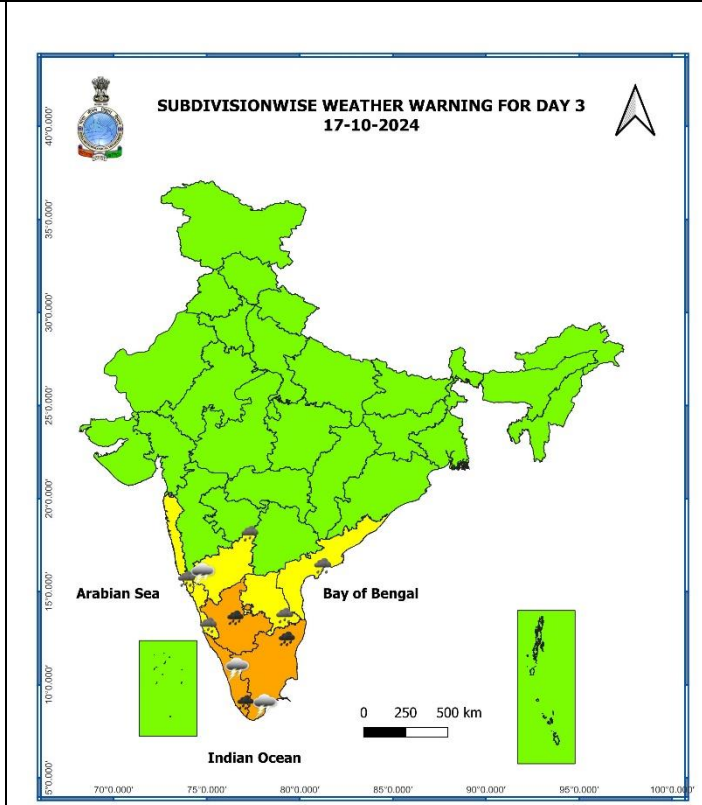
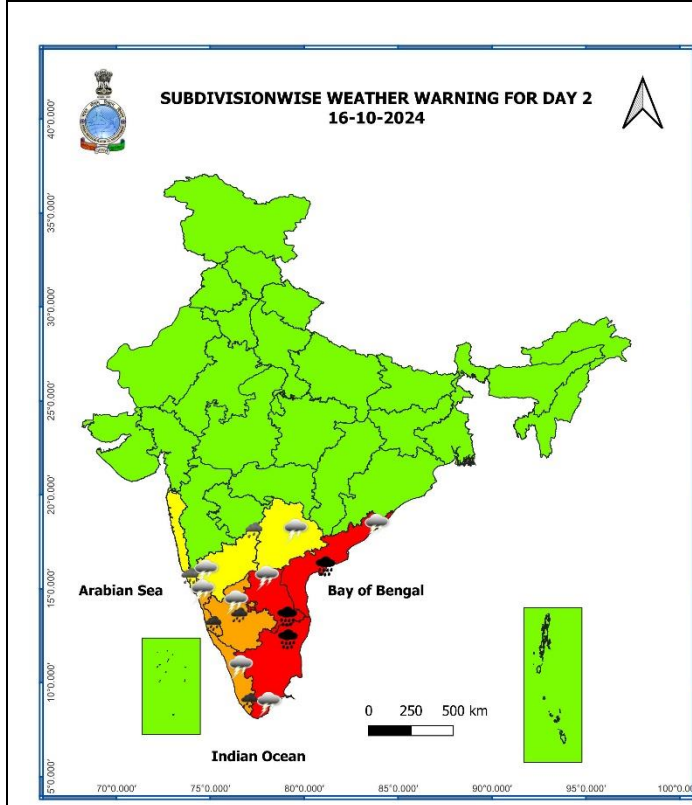
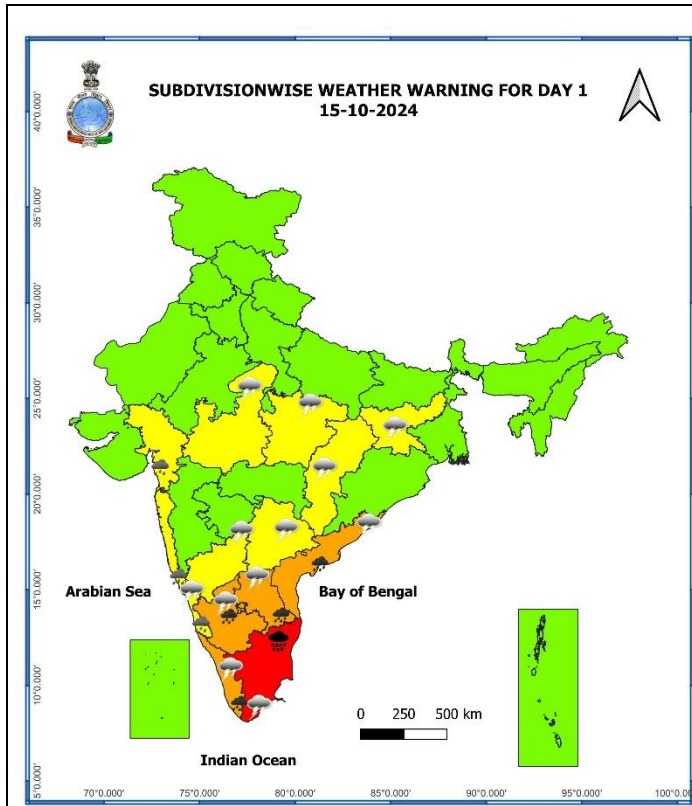


**OBSERVED AND FORECAST TRACK OF DEPRESSION OVER WESTCENTRAL ARABIAN SEA BASED ON 1200 UTC (1730 Hrs. IST) OF 15<sup>th</sup> OCTOBER, 2024**

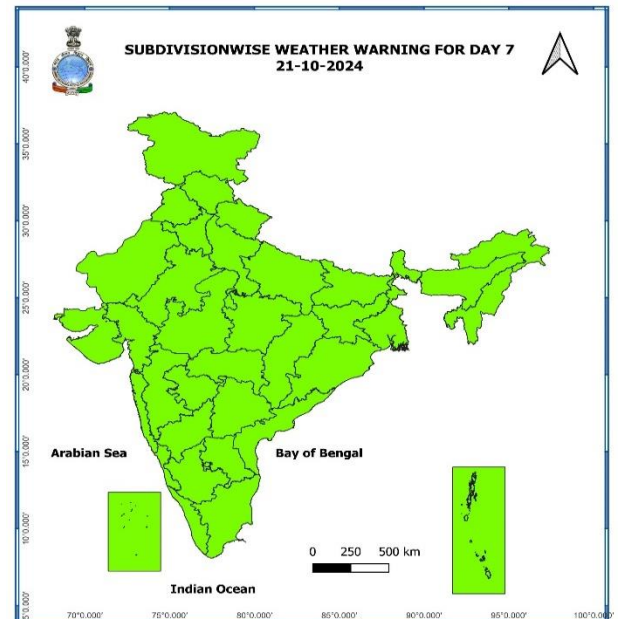
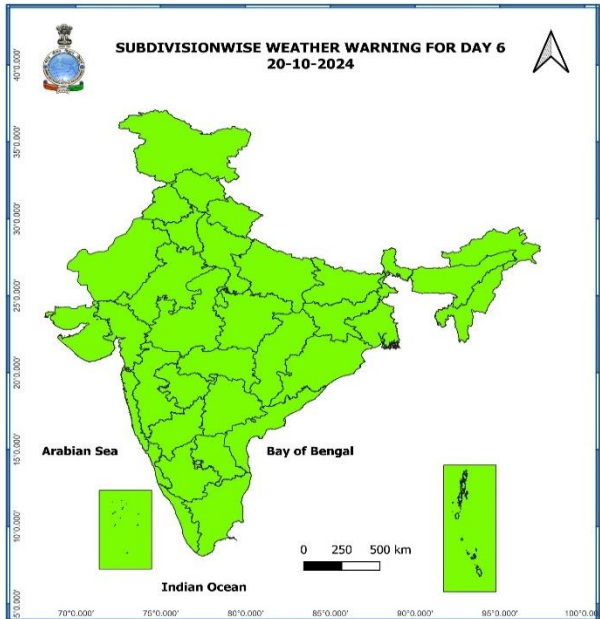
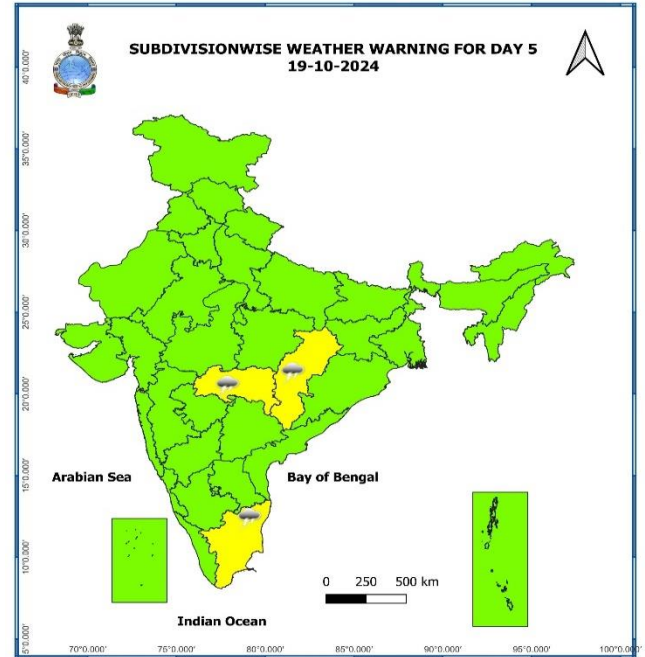
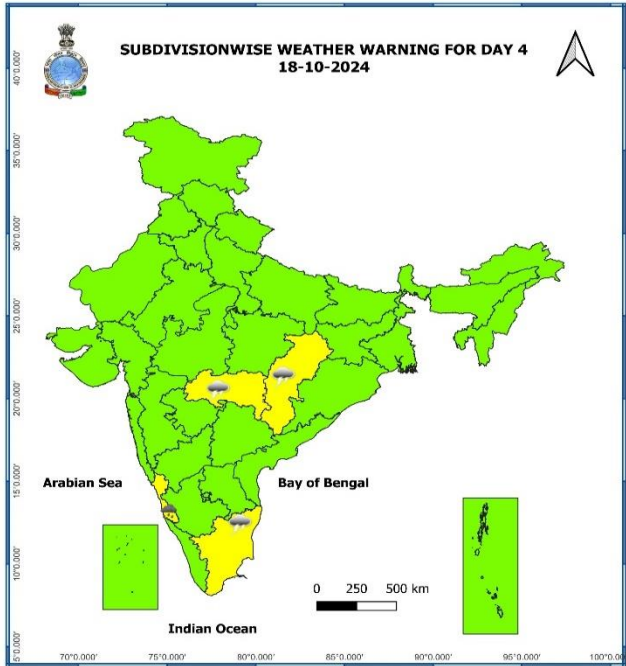


DATE/TIME IN UTC  
 IST=UTC + 0530  
 L: LOW PRESSURE AREA  
 WML: WELL MARKED LOW PRESSURE AREA  
 D: DEPRESSION (17-27 KT)  
 DD: DEEP DEPRESSION (28-33 KT)  
 CS: CYCLONIC STORM (34-47 KT)  
 SCS: SEVERE CYCLONIC STORM (48-63KT)  
 VSCS: VERY SEVERE CYCLONIC STORM (64-89 KT)  
 ESCS: EXTREMELY SEVERE CYCLONIC STORM (90-119 KT)  
 SuCS: SUPER CYCLONIC STORM (≥ 120 KT)

- LESS THAN 34 KT
- ⊖ 34-47 KT
- ⊖ ≥ 48 KT
- OBSERVED TRACK
- FORECAST TRACK
- ▲ CONE OF UNCERTAINTY

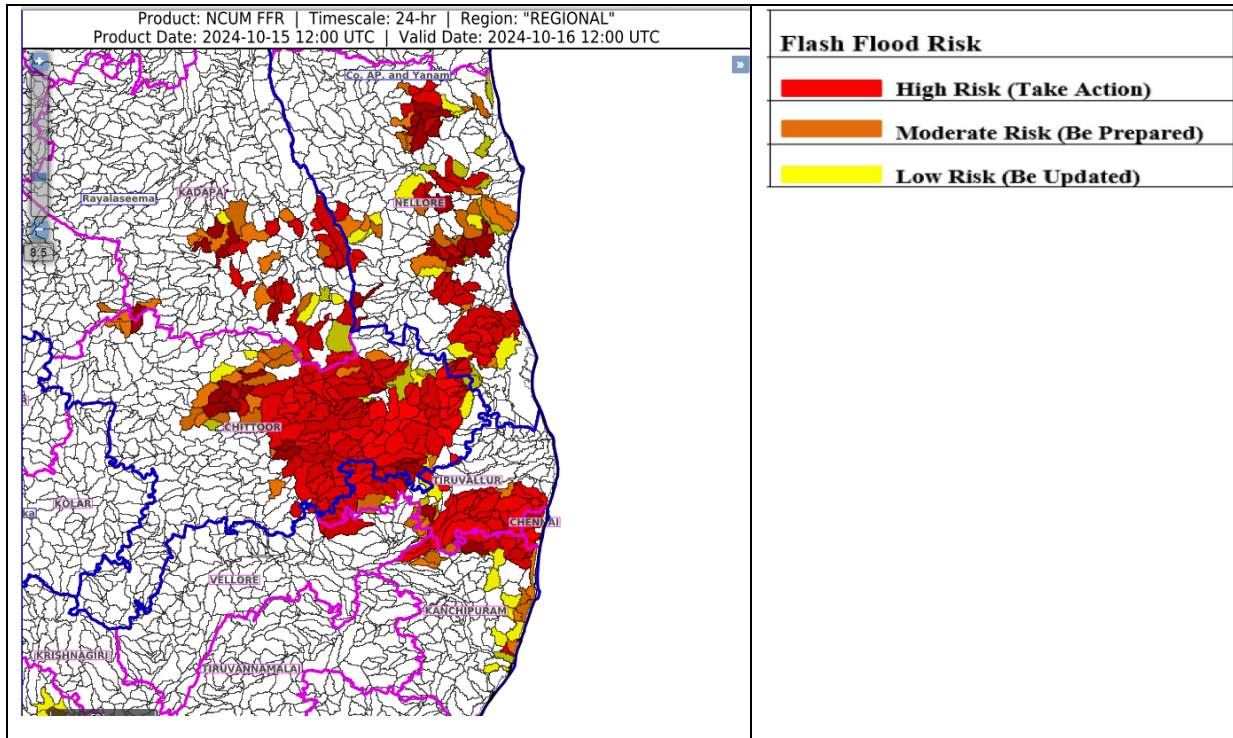






- Action may be taken based on **ORANGE AND RED** COLOUR warnings.
- Vulnerable regions likely urban and hilly areas action may be initiated for heavy rainfall warning.
- As the lead period increases forecast accuracy decreases.

## Flash Flood Guidance



### 24 hours Outlook for the Flash Flood Risk (FFR) till 1730 IST of 16-10-2024 :

Moderate flash flood risk likely over few watersheds & neighbourhoods of following Met Sub-divisions during next 24 hours.

**Coastal AP & Yanam** -Nellore district.

**Rayalaseema** – Chittoor and Kadapa districts.

**Tamil Nadu** - Chennai, Kanchipuram and Tiruvallur districts.

Surface runoff/ Inundation may occur at some fully saturated soils & low-lying areas over area of concern as shown in map due to expected rainfall occurrence in next 24 hours.

## Fishermen Warning Graphics

