



**India Meteorological Department
(Ministry of Earth Sciences)**

NATIONAL BULLETIN NO. 18 (LAND/02/2024)

TIME OF ISSUE: 1530 HOURS IST

DATED:28.08.2024

FROM: INDIA METEOROLOGICAL DEPARTMENT (FAX NO. 24643965/24699216/24623220)

TO: CONTROL ROOM, NDM, MINISTRY OF HOME AFFAIRS (FAX.NO. 23093750)

CONTROL ROOM NDMA (FAX.NO. 26701729)

CABINET SECRETARIAT (FAX.NO.23012284, 23018638)

PS TO HON'BLE MINISTER FOR S & T AND EARTH SCIENCES (FAX NO.23316745)

SECRETARY, MOES (FAX NO. 24629777)

H.Q. (INTEGRATED DEFENCE STAFF AND CDS) (FAX NO. 23005137/23005147)

DIRECTOR GENERAL, DOORDARSHAN (23385843)

DIRECTOR GENERAL, AIR (23421105, 23421219)

PIB MOES (FAX NO. 23389042)

UNI (FAX NO. 23355841)

D.G. NATIONAL DISASTER RESPONSE FORCE (NDRF) (FAX NO. 26105912, 2436 3260)

DIRECTOR, PUNCTUALITY, INDIAN RAILWAYS (FAX NO. 23388503)

CHIEF SECRETARY, ODISHA (FAX NO. 0674-2536660)

CHIEF SECRETARY, WEST BENGAL (FAX NO. 033-22144328)

CHIEF SECRETARY, JHARKHAND (FAX NO. 0651-2400255)

CHIEF SECRETARY, BIHAR (FAX NO. 0612-2217085)

CHIEF SECRETARY, MADHYA PRADESH (FAX NO. 0755-2441076)

CHIEF SECRETARY, RAJASHTHAN (FAX NO. 0141-2227114)

CHIEF SECRETARY, MAHARASHTRA (FAX NO. 022- 22028594)

CHIEF SECRETARY, GUJARAT (FAX NO. 079-23250305)

CHIEF SECRETARY, DAMAN & DIU (FAX NO. 0260-2230775)

CHIEF SECRETARY, DADRA & NAGAR HAVELI (FAX NO. 0260-2645466)

CHIEF SECRETARY, GOA (FAX NO. 0832-2415201)

Sub: Deep Depression over Saurashtra & Kachchh

The deep depression over Saurashtra & Kachchh moved westwards with a speed of 5 kmph during past 6 hours and lay centered at 1130 hours IST of today, the 28th August over the same region near latitude 23.7°N and longitude 69.7 °E, 50 km north-northwest of Bhuj (Gujarat), 100 km east-northeast of Naliya (Gujarat) and 290 km east-southeast of Karachi (Pakistan).

It is likely to move slowly west-southwestwards across Saurashtra & Kachchh region and reach Saurashtra & Kachchh and adjoining areas of Pakistan coasts by morning of 29th August. It is likely to continue to move west-southwestwards and emerge into northeast Arabian Sea off Kachchh and adjoining Saurashtra & Pakistan coasts by morning of 30th August. While moving west-southwestwards over northeast Arabian Sea away from the Indian coast, there is a possibility of its temporary and marginal intensification over northeast Arabian Sea on 30th August.

Warnings:

(i) Rainfall Warning:

Gujarat State:

(a) Saurashtra & Kachchh: Light to moderate rainfall at most places with heavy to very heavy rainfall at a few places and extremely heavy rainfall at isolated places is likely on 28th August;

heavy to extremely heavy rainfall at isolated places on 29th August and heavy rainfall at isolated places on 30th August.

(b) Gujarat region: Light to moderate rainfall at many places with heavy rainfall at isolated places is very likely on 28th August.

South Rajasthan: Light to moderate rainfall at many places with heavy rainfall at isolated places is very likely on 28th August.

Madhya Maharashtra: Light to moderate rainfall at most places with heavy rainfall at isolated places is likely on 28th August.

Konkan & Goa: Light to moderate rainfall at most places with heavy rainfall at isolated places is likely on 28th August.

(ii) Wind warning:

- Squally wind speed reaching 45-55 kmph gusting to 65 kmph is likely over the districts of South Gujarat Region and Saurashtra & Kutch during 28th-29th August.
- Squally wind speed reaching 55-65 kmph gusting to 75 kmph is very likely to prevail along & off Gujarat coasts & adjoining Pakistan coasts and northeast & adjoining eastcentral Arabian Sea during 28th-30th August.
- Strong surface wind speed reaching 40-50 kmph gusting to 60kmph is very likely to prevail over South Rajasthan on 27th August.
- Strong wind speed reaching 40-50 kmph gusting to 60 kmph is likely to prevail along and off north Maharashtra coasts on 28th- 29thAugust.

(iii) Sea condition:

- Squally weather with Rough to very Rough sea conditions is very likely to prevail along & off Gujarat & adjoining Pakistan and north Maharashtra Coasts and Northeast & adjoining Eastcentral Arabian Sea till 30thAugust.

(iv) Fisherman warning:

- Fishermen are advised not venture into Northeast & adjoining Eastcentral Arabian Sea and along & off Gujarat & adjoining Pakistan and north Maharashtra Coasts till 30th August.

(v) Advisory for offshore/onshore Exploration and Production (E & P) Operators:

The small ships and offshore -onshore E & P operators, shipping and port authorities along & off Gujarat & north Maharashtra Coasts and Northeast & adjoining Eastcentral Arabian Sea are advised to keep watch on developing weather and take necessary actions till 30th August.

(vi) Impact Expected

- Localized Flooding of roads, water logging in low lying areas and closure of underpasses mainly in urban areas of the above region.
- Occasional reduction in visibility due to heavy rainfall.
- Reduction of visibility over sea area due to sea spray induced by strong wind and heavy rainfall.
- Disruption of traffic in major cities due to water logging in roads leading to increased travel time.
- Minor damage to kutcha roads.
- Possibilities of damage to vulnerable structure.
- Localized Landslides/Mudslides/landslips/mud slips/land sinks/mud sinks.
- Damage to horticulture and standing crops in some areas due to inundation.

➤ It may lead to riverine flooding in some river catchments (for riverine flooding please visit Web page of CWC)

(v) Action Suggested

- Fishermen are advised not to venture into Northeast & adjoining Eastcentral Arabian Sea and along & off Gujarat & adjoining Pakistan and north Maharashtra Coasts till 30th August.
- Judicious regulation of offshore/onshore Operations
- Judicious regulation of surface transports including railways and roadways.
- Check for traffic congestion on your route before leaving for your destination.
- Follow any traffic advisories that are issued in this regard.
- Avoid going to areas that face the water logging problems often.
- Avoid staying in vulnerable structure.

(vi) Agromet advisories for Heavy Rainfall likely over Madhya Pradesh, South Rajasthan, Gujarat State and North Maharashtra

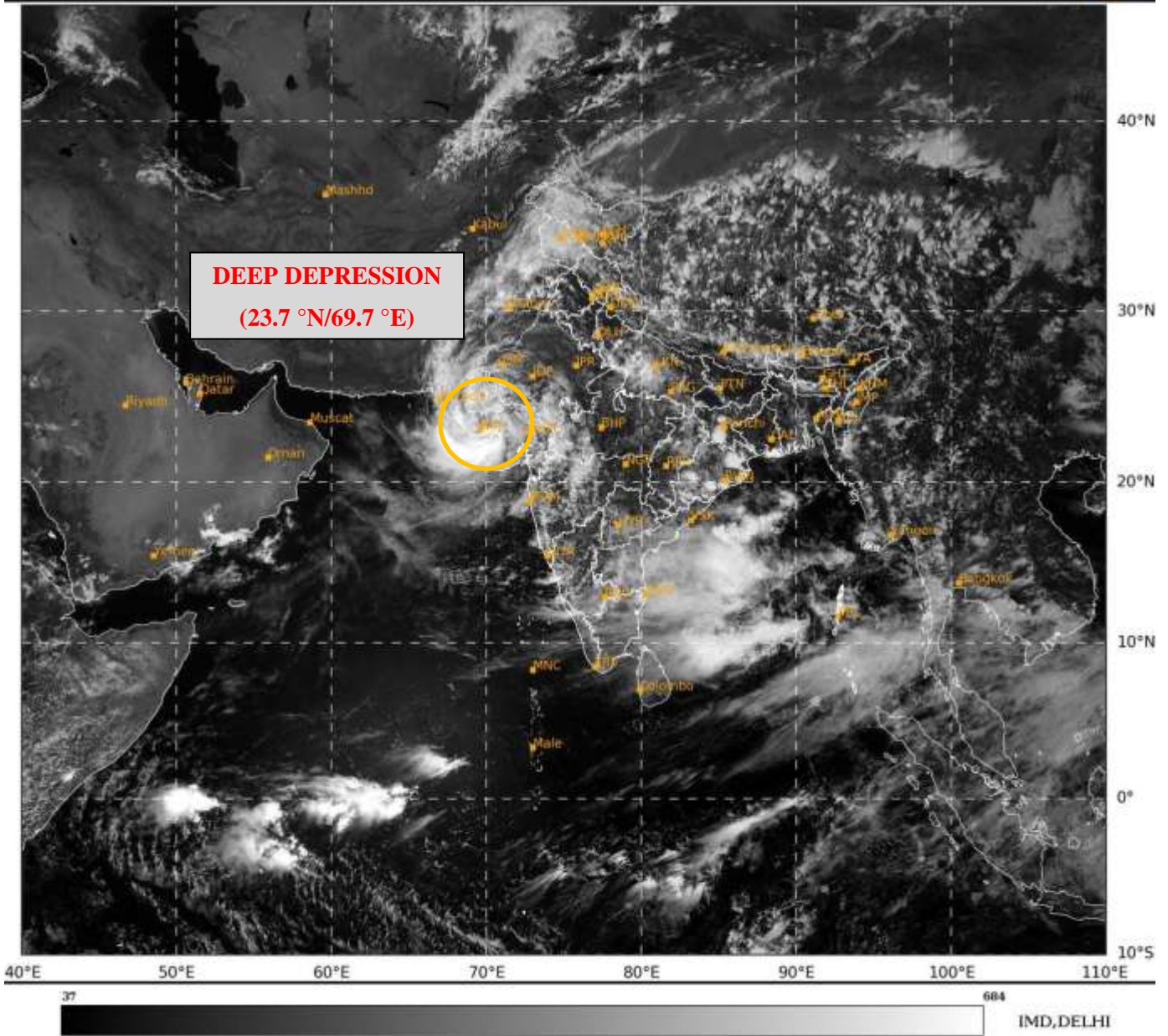
- Make provision for draining out excess water from crop fields to avoid water stagnation in Madhya Pradesh, South Rajasthan, Gujarat State and North Maharashtra.
- Provide mechanical support to horticultural crops and staking to vegetables.

Significant Rainfall (in cm) recorded during 0830 hours IST of 27th August to 0830 hours IST of 28th August is given in Annexure -I

Next bulletin will be issued at 2030 hours IST of today, the 28th August, 2024.

**(Dr. Ananda Kumar Das)
Scientist F, Cyclone Warning, New Delhi**

Copy to: ACWC Kolkata/ACWC Mumbai/RMC Mumbai/CWC Ahmedabad/MC Jaipur/RMC, Nagpur/MC, Bhopal//CWC Bhubaneswar/MC, Goa/MC, Ranchi





OBSERVED AND FORECAST TRACK OF DEEP DEPRESSION OVER SAURASHTRA & KACHCHH BASED ON 0600 UTC (1130 IST) OF 28TH AUGUST, 2024.



DATE/TIME IN UTC

IST=UTC + 0530

L: LOW PRESSURE AREA

WML: WELL MARKED LOW PRESSURE AREA

D: DEPRESSION (17-27 KT)

DD: DEEP DEPRESSION (28-33 KT)

CS: CYCLONIC STORM (34-47 KT)

SCS: SEVERE CYCLONIC STORM (48-63KT)

VSCS: VERY SEVERE CYCLONIC STORM (64-89 KT)

ESCS: EXTREMELY SEVERE CYCLONIC STORM (90-119 KT)

SuCS: SUPER CYCLONIC STORM (≥ 120 KT)



LESS THAN 34 KT



34-47 KT



≥ 48 KT



OBSERVED TRACK

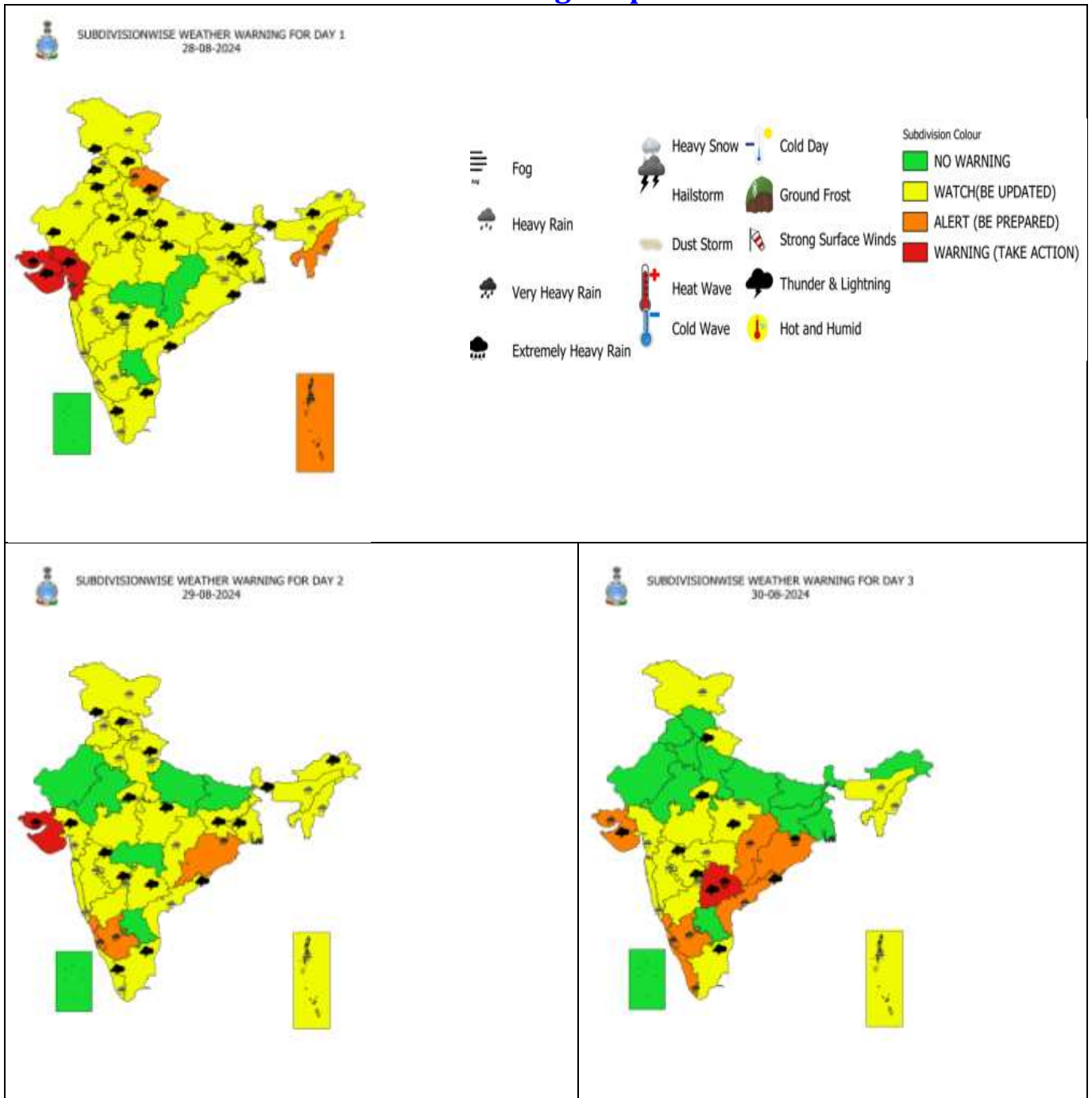


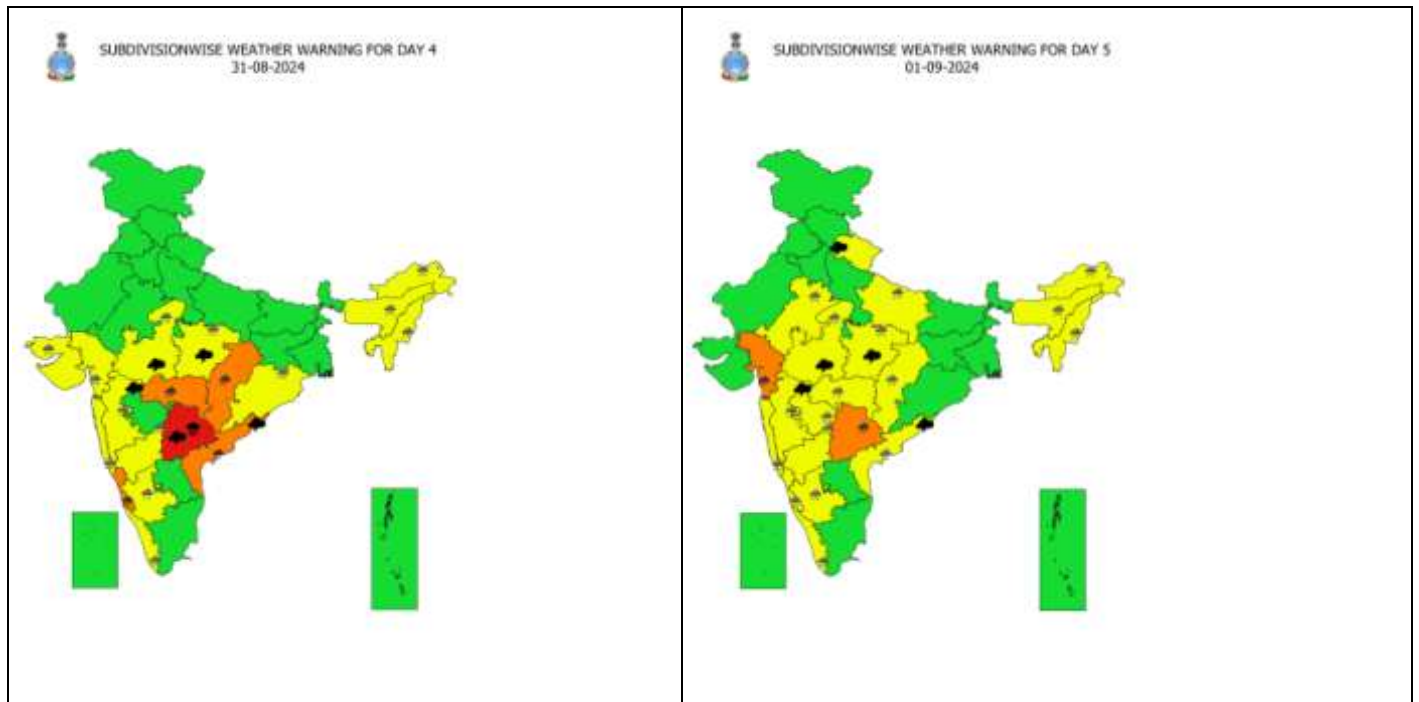
FORECAST TRACK



CONE OF UNCERTAINTY

Weather Warning Graphics





- Action may be taken based on **ORANGE AND RED** COLOUR warnings.
- Vulnerable regions likely urban and hilly areas action may be initiated for heavy rainfall warning.
- As the lead period increases forecast accuracy decreases.

District wise Warning Graphics Gujarat

દિવસ - 1 ગુજરાત રાજ્ય અને દીવ, દમણ, દાદરા નગર હવેલી ની 28-08-2024 માટે 'ભારે વરસાદ ની ચેતવણી'

28/08/2024

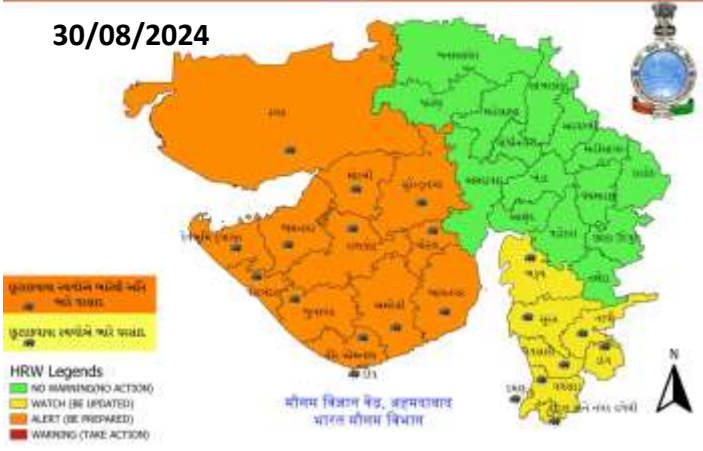


29/08/2024



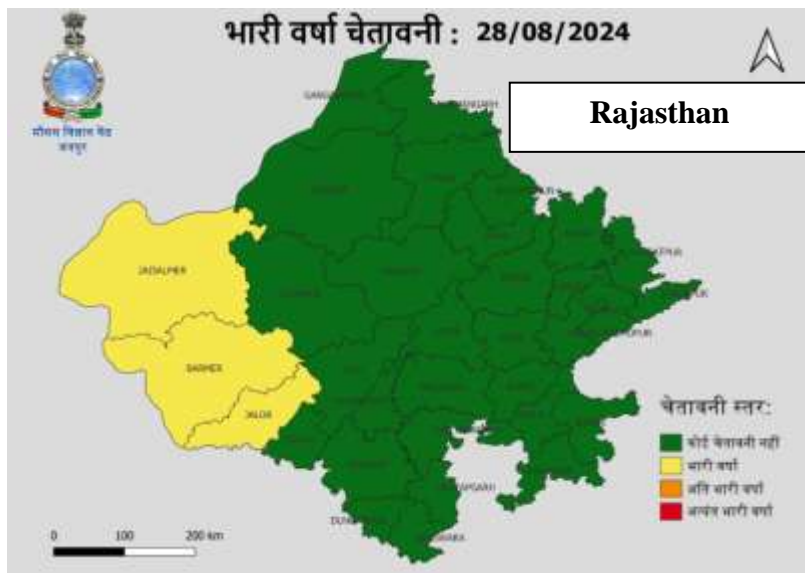
દિવસ - 3 ગુજરાત રાજ્ય અને દીવ, દમણ દાદરા નગર હવેલી ની 30-08-2024 માટે 'ભારે વરસાદ ની ચેતવણી'

30/08/2024

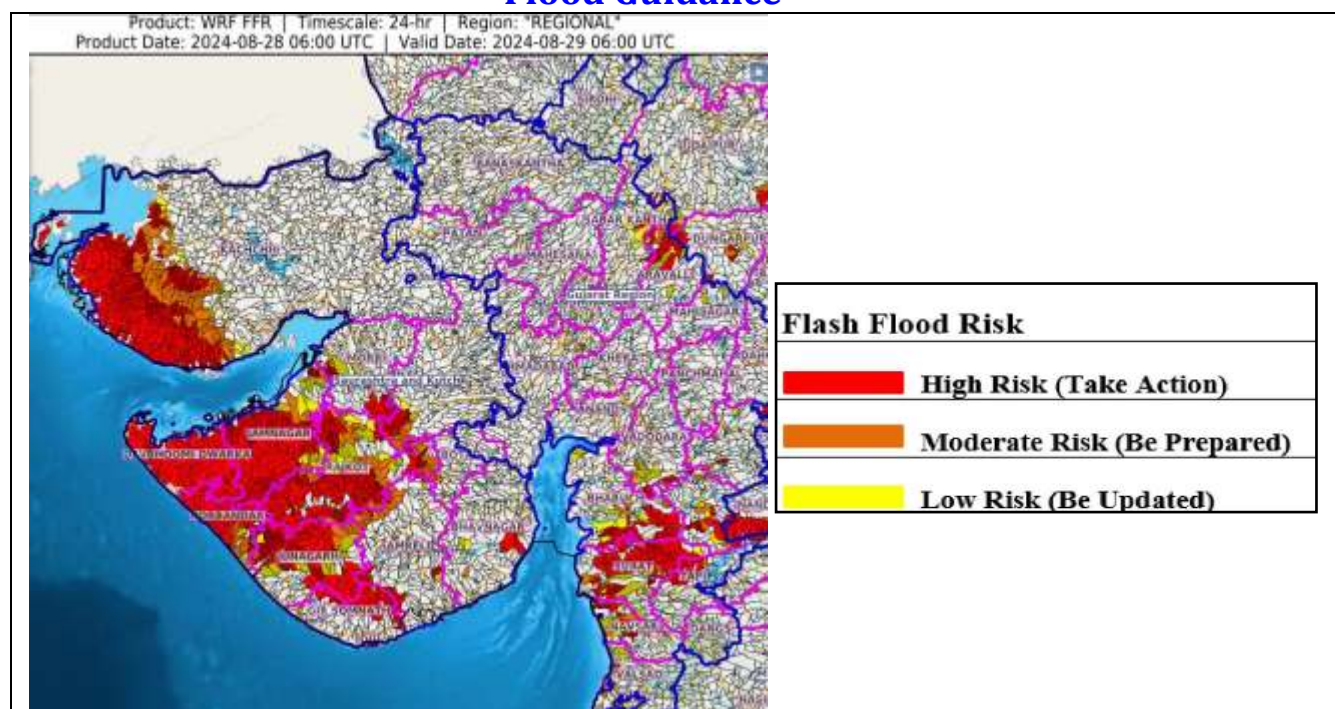


દિવસ - 4 ગુજરાત રાજ્ય અને દીવ, દમણ દાદરા નગર હવેલી ની 31-08-2024 માટે 'ભારે વરસાદ ની ચેતવણી'

31/08/2024



Flood Guidance



24 hours Outlook for the Flash Flood Risk (FFR) till 1130 IST of 29-08-2024 :

Moderate flash flood risk likely over few watersheds & neighbourhoods of following Met Sub-divisions during next 24 hours.

Gujarat Region - Daman, Aravalli, Bharuch, Chhota Udepur, Mahisagar, Narmada, Navsari, Sabar Kantha, Surat, Tapi, Vadodara and Valsad districts.

Saurashtra & Kutch - Amreli, Bhavnagar, Botad, Devbhoomi Dwarka, Diu, Gir Somnath, Jamnagar, Junagarh, Porbandar, Rajkot, Surendranagar, Morbi and Kachchh districts.

Surface runoff/ Inundation may occur at some fully saturated soils & low-lying areas over Area of Concern (AoC) as shown in map due to expected rainfall occurrence in next 24 hours.

Fishermen Warning Graphics



	Squally WX with wind speed 35-45 kmph gusting to 55 kmph
	Squally WX with wind speed 45-55 kmph gusting to 65 kmph
	Squally wind with speed 45-55 kmph gusting to 65 kmph
	Squally wind with speed 55-65 kmph gusting to 75 kmph

Fishermen are advised not to venture into the marked areas.

ANNEXURE –I

Significant Rainfall recorded during past 24 hours till 0830 hours IST of today 28.08.2024 (in cm):

Saurashtra & Kutch: Khambhalia (Devbhoomi Dwarka) 43, Jamnagar (Jamnagar) 38, Jamjodhpur (Jamnagar) 32, Dwarka (Devbhoomi Dwarka) 31, Lalpur (Jamnagar) 30, Porbandar (Porbandar) 28, Ranavav (Porbandar) 28, Bhanvad (Devbhoomi Dwarka) 24, Kalavad (Jamnagar) 24, Kalyanpur (Devbhoomi Dwarka) 24, Kotdasangani (Rajkot) 23, Dhrol (Jamnagar) 18, Lodhika (Rajkot) 17, Dhoraji (Rajkot) 16, Jamkandorna (Rajkot) 16, Jodia (Jamnagar) 15, Gondal (Rajkot) 15, Kutiana (Porbandar) 13, Morbi (Morbi) 12, Mangrol (Junagadh) 12, Tankara (Morbi) 12, Visavadar (Junagadh) 12, Rajkot (Rajkot) 12, Upleta (Rajkot) 11, Vanthali (Junagadh) 11, Manavadar (Junagadh) 11, Bhesan (Junagadh) 10, Talala (Gir Somnath) 10, Jetpur (Rajkot) 10, Paddhari (Rajkot) 10, Junagadh (Junagadh) 9, Naliya (Kutch) 9, Mendarda (Junagadh) 8, Wankaner (Morbi) 8, Keshod (Junagadh) 8, Babra (Amreli) 8, Abdasa (Kutch) 8, Botad (Botad) 7

Gujarat Region: Nadiad (Kheda) 8, Kapadvanj (Kheda) 7,

East Rajasthan: Mounnt Abu (Sirohi) 9,