



**India Meteorological Department**

**(Ministry of Earth Sciences)**

**NATIONAL BULLETIN NO.: 01 (BOB/02/2024)**

**TIME OF ISSUE: 1330 HOURS IST**

**DATED: 19.07.2024**

**FROM: INDIA METEOROLOGICAL DEPARTMENT (FAX NO. 24643965/24699216/24623220)**

**TO: CONTROL ROOM, NDM, MINISTRY OF HOME AFFAIRS (FAX.NO. 23093750)**

**CONTROL ROOM NDMA (FAX.NO. 26701729)**

**CABINET SECRETARIAT (FAX.NO.23012284, 23018638)**

**PS TO HON'BLE MINISTER FOR S & T AND EARTH SCIENCES (FAX NO.23316745)**

**SECRETARY, MOES (FAX NO. 24629777)**

**H.Q. (INTEGRATED DEFENCE STAFF AND CDS) (FAX NO. 23005137/23005147)**

**DIRECTOR GENERAL, DOORDARSHAN (23385843)**

**DIRECTOR GENERAL, AIR (23421105, 23421219)**

**PIB MOES (FAX NO. 23389042)**

**UNI (FAX NO. 23355841)**

**D.G. NATIONAL DISASTER RESPONSE FORCE (NDRF) (FAX NO. 26105912, 2436 3260)**

**DIRECTOR, PUNCTUALITY, INDIAN RAILWAYS (FAX NO. 23388503)**

**CHIEF SECRETARY, WEST BENGAL (FAX NO. 033-22144328)**

**CHIEF SECRETARY, ODISHA (FAX NO. 0674-2536660)**

**CHIEF SECRETARY, ANDHRA PRADESH (FAX NO. 0863-2441029, 08645-246600)**

**CHIEF SECRETARY, CHHATTISGARH (FAX NO. 0771-2221206)**

**CHIEF SECRETARY, JHARKHAND (FAX NO. 0651-2400255)**

**CHIEF SECRETARY, KARNATAKA (FAX NO. 080-22258913)**

**CHIEF SECRETARY, MAHARASHTRA (FAX NO. 022- 22028594)**

**CHIEF SECRETARY, GUJARAT (FAX NO. 079-23250305)**

**CHIEF SECRETARY, GOVT. OF TELANGANA (FAX NO. 040-23453700)**

**Sub: Depression over Northwest and adjoining Westcentral Bay of Bengal off Odisha and adjoining North Andhra Pradesh coasts**

A depression has formed and lay centered at 0830 hours IST of today, the 19th July, 2024 over Northwest and adjoining Westcentral Bay of Bengal off Odisha and adjoining north Andhra Pradesh coasts near latitude 19.2°N and longitude 86.2°E, about 70 km southeast of Puri (Odisha), 130 km East of Gopalpur (Odisha), 130 km south-southeast of Paradip (Odisha) and 240 km east-northeast of Kalingapatnam (Andhra Pradesh).

It is likely to move northwestwards and cross Odisha coast near Puri as a depression during early morning hours of tomorrow, the 20th July, 2024. Thereafter, it would move west-northwestwards across Odisha & Chhattisgarh and weaken gradually during subsequent 24 hours.

**Warnings:**

**(i) Rainfall warning**

**Odisha:**

- ❖ **South Odisha:** Light to moderate rainfall at most places with heavy to very heavy rainfall at a few places is very likely over South Odisha on 19<sup>th</sup> and 20<sup>th</sup> July and extremely heavy rainfall at isolated places on 19<sup>th</sup> July.
- ❖ **North Odisha:** Light to moderate rainfall is very likely at most places with heavy to very heavy rainfall at isolated places on 19<sup>th</sup> and 20<sup>th</sup> July.

**Gangetic West Bengal:** Light to moderate rainfall is very likely at most places on 19<sup>th</sup> and 20<sup>th</sup> July.

**Spatial rainfall distribution: Isolated: <25%, A few: 26-50%, Many: 51-75%, Most: 76-100%**

**Rainfall amount (mm): Heavy rain: 64.5 – 115.5, Very heavy rain: 115.6 – 204.4, Extremely heavy rain: 204.5 or more.**

**Andhra Pradesh:**

- ❖ **North Coastal Andhra Pradesh:** Light to moderate rainfall at most places with heavy to very heavy rainfall at a few places is most likely on 19<sup>th</sup> & 20<sup>th</sup> July and extremely heavy rainfall at isolated places on 19<sup>th</sup> July.
- ❖ **South Coastal Andhra Pradesh:** Light to moderate rainfall at most places with heavy rainfall at isolated places is likely over South Coastal Andhra Pradesh on 19<sup>th</sup> and 20<sup>th</sup> July.

**Jharkhand:** Light to moderate rainfall at most places with heavy rainfall at isolated places is very likely on 20<sup>th</sup> July.

**Chattisgarh:** Light to moderate rainfall at most places with heavy to very heavy rainfall at isolated places is very likely on 19<sup>th</sup> and 20<sup>th</sup> July and extremely heavy rainfall at isolated places on 19<sup>th</sup> July.

**Telangana & Vidarbha:** Light to moderate rainfall at most places with heavy to very heavy rainfall at a few places and extremely heavy rainfall at isolated places is very likely on 19<sup>th</sup> July. Light to moderate rainfall at most places with heavy to extremely heavy rainfall at isolated places is very likely on 20<sup>th</sup> July.

**(ii) Wind warning**

Squally weather with wind speed reaching 45-55 kmph gusting to 65 kmph is very likely to prevail over northwest and adjoining westcentral Bay of Bengal and along and off North Andhra Pradesh, Odisha, West Bengal & adjoining Bangladesh coasts on 19<sup>th</sup> and 20<sup>th</sup> July and would decrease gradually thereafter.

**(iv) Sea Condition:** Rough to very rough sea condition is very likely to prevail over northwest and adjoining westcentral Bay of Bengal and along and off North Andhra Pradesh, Odisha, West Bengal & adjoining Bangladesh coasts on 19<sup>th</sup> and 20<sup>th</sup> July and would improve gradually thereafter.

**(v) Fishermen Warning**

Fishermen are advised not to venture into northwest and adjoining westcentral Bay of Bengal and along & off North Andhra Pradesh, Odisha, West Bengal & adjoining Bangladesh coasts on 19<sup>th</sup> and 20<sup>th</sup> July.

***The next bulletin will be issued at 1430hrs IST of today, 19<sup>th</sup> July, 2024.***

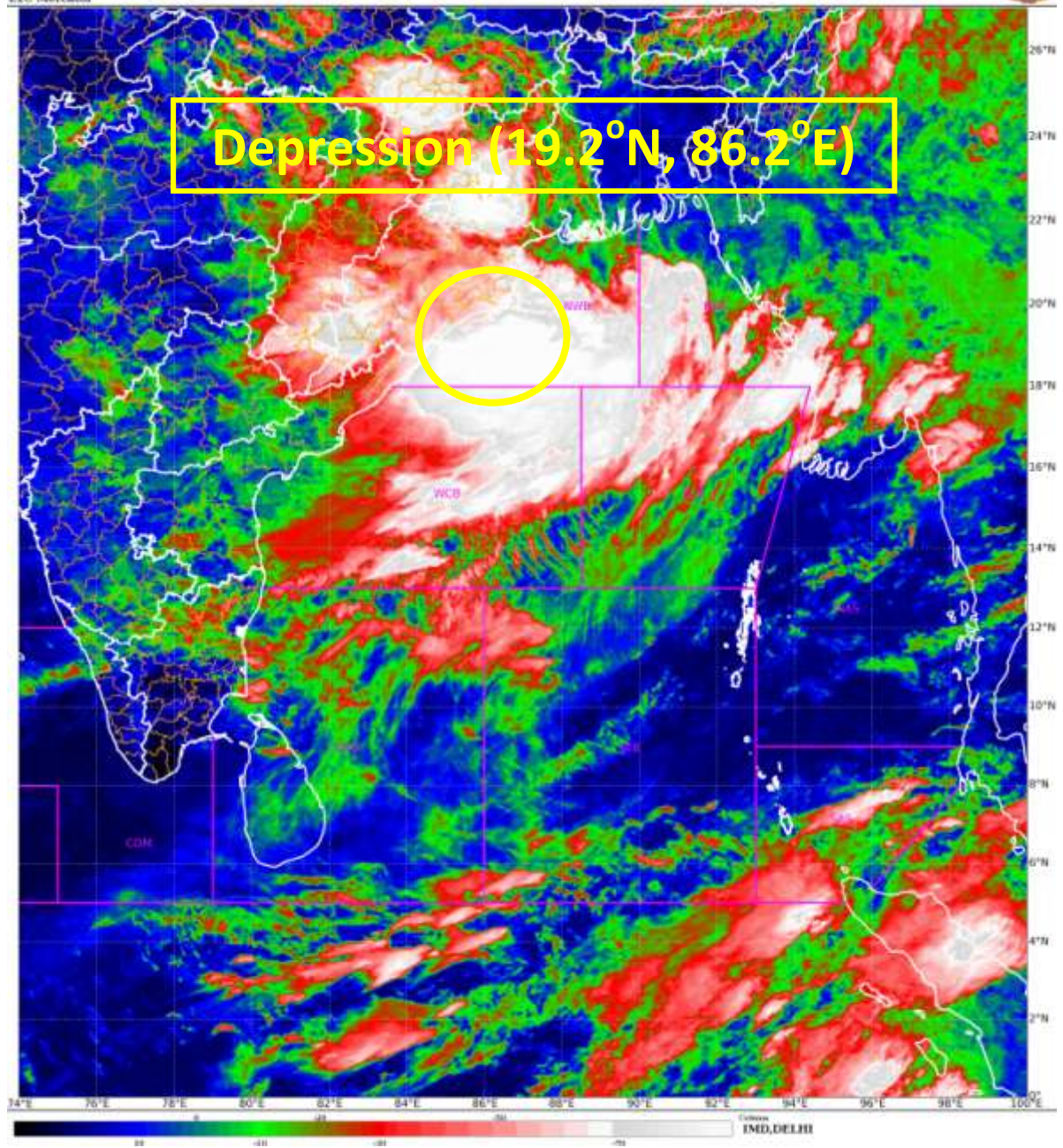
**(Monica Sharma)**  
**Scientist-D, RSMC, New Delhi**

Copy to: CRS, Pune/ACWC Kolkata/Chennai/Mumbai/CWC Bhubaneswar/CWC  
Visakhapatnam/CWC Ahmedabad/MC Hyderabad/MC Raipur/MC Amravati/MC Ranchi/RMC Nagpur

**Spatial rainfall distribution: Isolated: <25%, A few: 26-50%, Many: 51-75%, Most: 76-100%**  
**Rainfall amount (mm): Heavy rain: 64.5 – 115.5, Very heavy rain: 115.6 – 204.4, Extremely heavy rain: 204.5 or more.**

SAT : INSAT-3DR IMG  
IMG\_YIR1\_TEMP 10.8 um  
LIC Mercator

01-08-2023(0245 to 0312) GMT  
01-08-2023(0015 to 0042) IST



Spatial rainfall distribution: Isolated: <25%, A few: 26-50%, Many: 51-75%, Most: 76-100%  
Rainfall amount (mm): Heavy rain: 64.5 – 115.5, Very heavy rain: 115.6 – 204.4, Extremely heavy rain: 204.5 or more.



**OBSERVED AND FORECAST TRACK OF DEPRESSION OVER NORTHWEST AND ADJOINING WESTCENTRAL BAY OF BENGAL OFF ODISHA AND ADJOINING NORTH ANDHRA PRADESH COASTS BASED ON 0300 UTC OF 19<sup>TH</sup> JULY, 2024.**

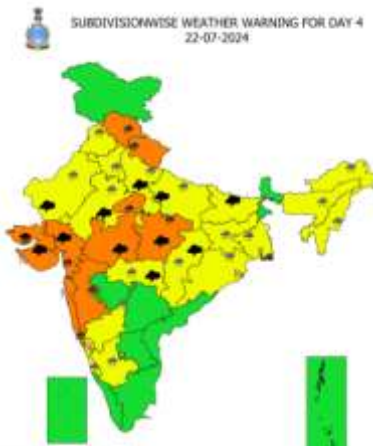
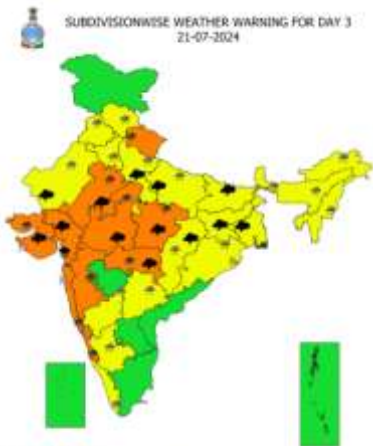
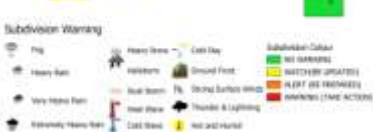
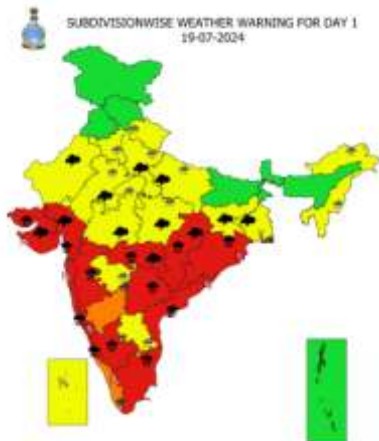


DATE/TIME IN UTC  
 IST=UTC + 0530  
 L: LOW PRESSURE AREA  
 WML: WELL MARKED LOW PRESSURE AREA  
 D: DEPRESSION (17-27 KT)  
 DD: DEEP DEPRESSION (28-33 KT)  
 CS: CYCLONIC STORM (34-47 KT)  
 SCS: SEVERE CYCLONIC STORM (48-63KT)  
 VSCS: VERY SEVERE CYCLONIC STORM (64-89 KT)  
 ESCS: EXTREMELY SEVERE CYCLONIC STORM (90-119 KT)  
 SuCS: SUPER CYCLONIC STORM ( $\geq$  120 KT)

- LESS THAN 34 KT
- 34-47 KT
- $\geq$  48 KT
- OBSERVED TRACK
- FORECAST TRACK
- CONE OF UNCERTAINTY

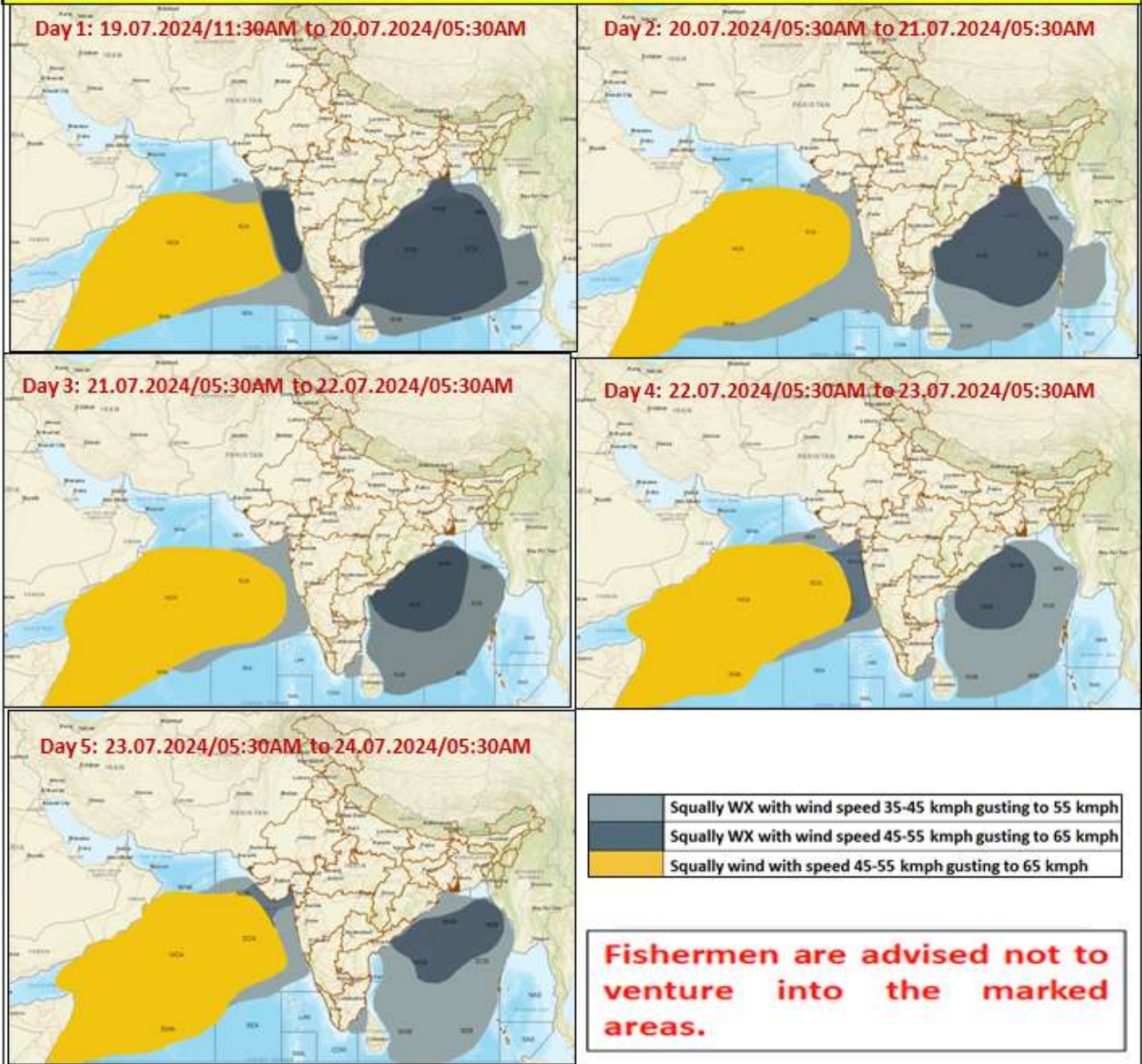
Forecast	DISTANCE (KM) AND DIRECTION FROM STATIONS			
	PURI	GOPALPUR	PARADIP (CWR)	KALINGAPATAM
19.07.24/0300	80, SSE	140, E	140, SSW	240, ENE

Spatial rainfall distribution: Isolated: <25%, A few: 26-50%, Many: 51-75%, Most: 76-100%  
 Rainfall amount (mm): Heavy rain: 64.5 – 115.5, Very heavy rain: 115.6 – 204.4, Extremely heavy rain: 204.5 or more.



**Spatial rainfall distribution: Isolated: <25%, A few: 26-50%, Many: 51-75%, Most: 76-100%**  
**Rainfall amount (mm): Heavy rain: 64.5 – 115.5, Very heavy rain: 115.6 – 204.4, Extremely heavy rain: 204.5 or more.**

## Fishermen Warning Graphics



Spatial rainfall distribution: Isolated: <25%, A few: 26-50%, Many: 51-75%, Most: 76-100%

Rainfall amount (mm): Heavy rain: 64.5 – 115.5, Very heavy rain: 115.6 – 204.4, Extremely heavy rain: 204.5 or more.