



**India Meteorological Department  
(Ministry of Earth Sciences)**

**NATIONAL BULLETIN NO. 15 (LAND/01/2024)**

**TIME OF ISSUE: 1430 HOURS IST**

**DATED:05.08.2024**

**FROM: INDIA METEOROLOGICAL DEPARTMENT (FAX NO. 24643965/24699216/24623220)**

**TO: CONTROL ROOM, NDM, MINISTRY OF HOME AFFAIRS (FAX.NO. 23093750)**

**CONTROL ROOM NDMA (FAX.NO. 26701729)**

**CABINET SECRETARIAT (FAX.NO.23012284, 23018638)**

**PS TO HON'BLE MINISTER FOR S & T AND EARTH SCIENCES (FAX NO.23316745)**

**SECRETARY, MOES (FAX NO. 24629777)**

**H.Q. (INTEGRATED DEFENCE STAFF AND CDS) (FAX NO. 23005137/23005147)**

**DIRECTOR GENERAL, DOORDARSHAN (23385843)**

**DIRECTOR GENERAL, AIR (23421105, 23421219)**

**PIB MOES (FAX NO. 23389042)**

**UNI (FAX NO. 23355841)**

**D.G. NATIONAL DISASTER RESPONSE FORCE (NDRF) (FAX NO. 26105912, 2436 3260)**

**DIRECTOR, PUNCTUALITY, INDIAN RAILWAYS (FAX NO. 23388503)**

**CHIEF SECRETARY, MADHYA PRADESH (FAX NO. 0755-2441076)**

**CHIEF SECRETARY, UTTAR PRADESH (FAX NO.0522-2239283)**

**CHIEF SECRETARY, RAJASHTHAN (FAX NO. 0141-2227114)**

**CHIEF SECRETARY, GUJARAT (FAX NO. 079-23250305)**

**CHIEF SECRETARY, MAHARASHTRA (FAX NO. 022-22028594)**

**Sub: Depression over Northeast Rajasthan and neighbourhood**

The depression over Northeast Rajasthan and neighbourhood moved west-northwestwards with a speed of 07 kmph during past 6 hours and lay centered at 1130 hours IST of today, the 5<sup>th</sup> August over the same region near latitude 26.8°N and longitude 75.4°E, about 40 km west of Jaipur (Rajasthan), 90 km south-southeast of Sikar (Rajasthan), 90 km east-northeast of Ajmer (Rajasthan) and 250 km east-southeast of Bikaner (Rajasthan).

It is likely to continue to move west-northwestwards across North Rajasthan and weaken into a well marked low pressure area during next 12 hours.

**Warnings (Graphics Attached):**

**(i) Rainfall Warning:**

**East Rajasthan:**

Light to moderate rainfall at most places is very likely with **heavy to very heavy rainfall** at isolated places on 5<sup>th</sup> and heavy rainfall at isolated places on 6<sup>th</sup> August.

**West Rajasthan:**

Light to moderate rainfall at most places is very likely with **heavy to extremely heavy rainfall** at isolated places on 5<sup>th</sup> and heavy to very heavy rainfall at isolated places on 6<sup>th</sup> August.

**Gujarat region:**

Light to moderate rainfall at most places is very likely with **heavy to very heavy rainfall** at a few places on 5<sup>th</sup> and **heavy rainfall** at isolated places on 6<sup>th</sup> August.

**Saurashtra & Kutch:**

Light to moderate rainfall at many places is very likely with heavy rainfall at isolated places on 5<sup>th</sup> August.

**West Madhya Pradesh:**

Light to moderate rainfall at most places is very likely with **heavy rainfall** at isolated places on 05<sup>th</sup> August.

**Madhya Maharashtra:**

Light to moderate rainfall at most places is very likely with **heavy to very heavy rainfall** at a few places on 5<sup>th</sup> and **heavy rainfall** at isolated places on 6<sup>th</sup> August.

**Konkan & Goa:**

Light to moderate rainfall at most places with **heavy rainfall** at a few places is very likely on 5<sup>th</sup> & 6<sup>th</sup> August.

**(ii) Flash Flood Guidance (Graphics Attached):****24 hours Outlook for the Flash Flood Risk (FFR) till 0530 IST of 06-08-2024 (Graphics attached):**

Low to Moderate flash flood risk is likely over few watersheds & neighbourhoods of East Rajasthan and West Rajasthan Met Sub-divisions during next 24 hours. Surface runoff/ Inundation may occur at some fully saturated soils & low-lying areas over Area of Concern (AoC) as shown in map due to expected rainfall occurrence in next 24 hours.

Low to Moderate flash flood risk is likely over few watersheds & neighbourhoods of South Gujarat Region and Konkan & Goa Met Sub-divisions during next 24 hours. Surface runoff/ Inundation may occur at some fully saturated soils & low-lying areas over AoC as shown in map due to expected rainfall occurrence in next 24 hours.

**(iii) Wind warning:**

- Strong wind speed reaching 30-40 kmph gusting to 50 kmph is very likely over Rajasthan and adjoining South Haryana on 5<sup>th</sup> August.

**(iv) Impact Expected**

- Localized Flooding of roads, water logging in low lying areas and closure of underpasses mainly in urban areas of the above region.
- Occasional reduction in visibility due to heavy rainfall.
- Disruption of traffic in major cities due to water logging in roads leading to increased travel time.
- Surface runoff/ inundation may occur at some fully saturated soils & low-lying areas
- Minor damage to kutchha roads.
- Possibilities of damage to vulnerable structure.
- Localized Landslides/Mudslides/landslips/mud slips/land sinks/mud sinks.
- Damage to horticulture and standing crops in some areas due to inundation.
- It may lead to riverine flooding in some river catchments (for riverine flooding please visit Web page of CWC)

**(v) Action Suggested**

- Check for traffic congestion on your route before leaving for your destination.
- Follow any traffic advisories that are issued in this regard.
- Avoid going to areas that face the water logging problems often.
- Avoid staying in vulnerable structure.

**(vi) Agromet advisories for Heavy Rainfall likely over various parts of the country**

- Make provision for draining out excess water from crop fields to avoid water stagnation in Rajasthan, Gujarat, Madhya Maharashtra and Konkan & Goa.
- Provide mechanical support to horticultural crops and staking to vegetables.

**Next bulletin will be issued at 2030 hours IST of today, the 5<sup>th</sup> August, 2024.**

**(Monica Sharma)**  
**Scientist-D, Cyclone Warning Division, New Delhi**

*Copy to: ACWC Kolkata/RMC, New Delhi/RMC, Nagpur/MC, Ranch/MC, Raipur/MC, Patna/MC, Bhopal/MC, Jaipur/CWC Bhubaneswar/MC, Lucknow/RMC, Mumbai/MC, Ahmedabad*

**24 hours cumulative realised rainfall (in cm) ending at 0830 hours IST of 5th August**

**East Rajasthan:** Nagrarfort (Tonk) 32, Hindoli (Bundi) 22, Jahazpur (Bhilwara) 21, Bundi (Bundi) 19, Sarwar (Ajmer) 18, Kekri (Ajmer) 18, Sawar (Ajmer) 17, Geola Sr (Ajmer) 17, Deoli (Tonk) 17, Kishanganj (Baran) 16, Mangliawas (Ajmer) 15, Mangrol (Baran) 15, Bakani (Jhalawar) 13, Pisagan (Ajmer) 13, Uniara / Aligarh (Tonk) 12, Deogarh (Rajsamand) 12, Bhinay (Ajmer) 11, Badesar (Chittorgarh) 11, Shahpura (Bhilwara) 11, Baran (Baran) 11, Malpura (Tonk) 11, Patan (Bundi) 11, Mandalgarh (Bhilwara) 11, Nayanagar/beawar (Ajmer) 11, Todaraisingh (Tonk) 11, Talera (Bundi) 11, Bhainsroadgarh (Chittorgarh) 10, Nainwa (Bundi) 10, Tatgarh (Ajmer) 10, Pratapgarh (Pratapgarh) 10, Tonk Tehsil (Tonk) 10, Atru (Baran) 10, Nimbahera (Chittorgarh) 10, Masuda (Ajmer) 9, Pachpahar (Jhalawar) 9, Pushkar (Ajmer) 9, Jhalarapatan (Jhalawar) 9, Piplu (Tonk) 9, Nasirabad (Ajmer) 9, Bijoliya (Bhilwara) 8, Kotri (Bhilwara) 8, Pirawa (Jhalawar) 8, Shahabad (Baran) 8, Ladpura (Kota) 8, Indergarh (Bundi) 8, Gangdhar (Jhalawar) 8, Aklera (Jhalawar) 8, Chothkabarwara (Sawai Madhopur) 7, Degod (Kota) 7, Kota (Kota) 7, Mavli (Udaipur) 7, Anta (Baran) 7, Ramganjmandi (Kota) 7, Arai (Ajmer) 7, Railmagra (Rajsamand) 7, Chittorgarh (Chittorgarh) 7, Begu (Chittorgarh) 7, Jhalawar (Jhalawar) 7, Rashmi (Chittorgarh) 7, Dug (Jhalawar) 7,

**West Rajasthan:** Sojat (Pali) 26, Degana (Nagaur) 10, Raipur (Pali) 9, Bilara (Jodhpur) 9, Jaitran (Pali) 6,

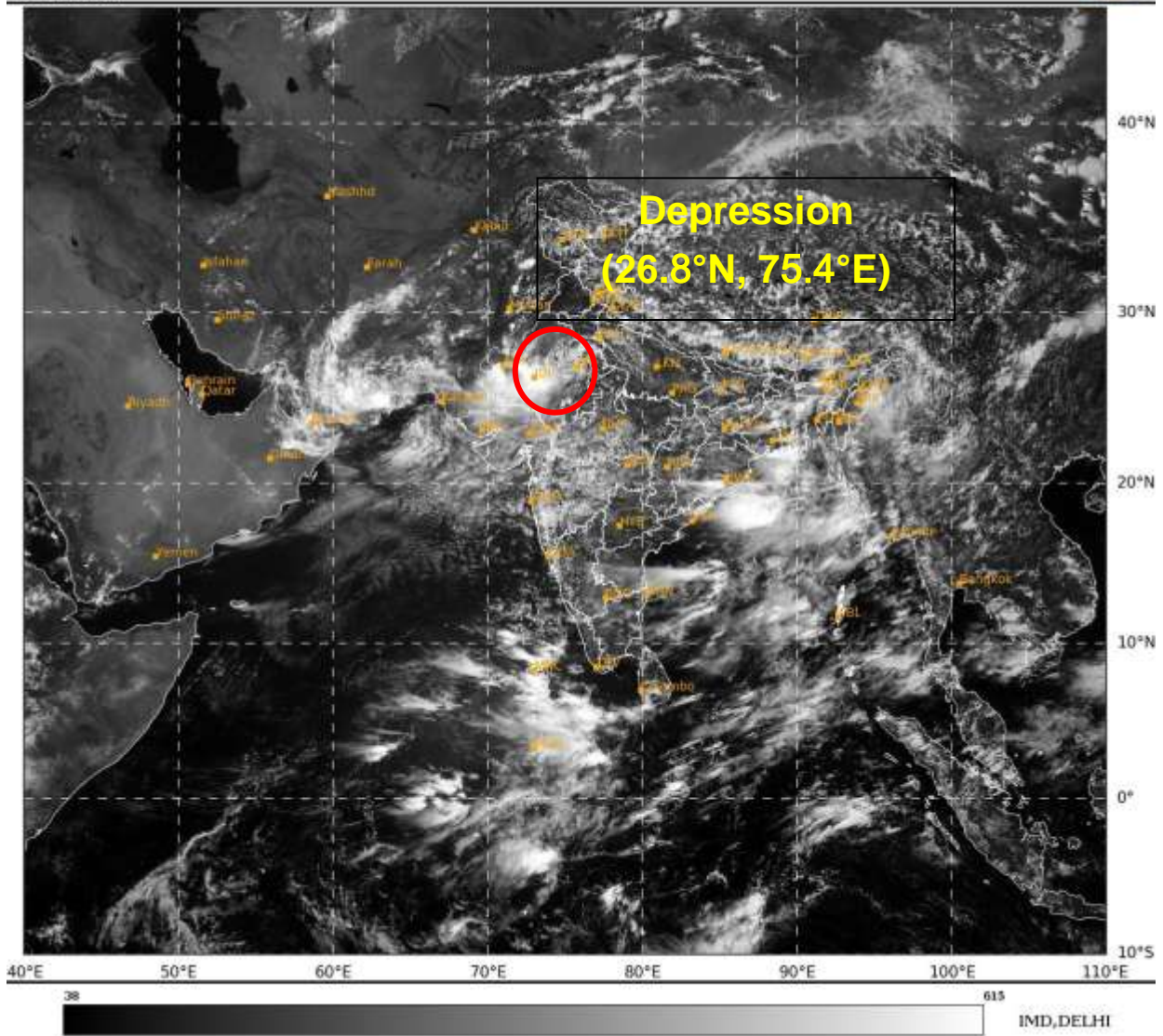
**Gujarat Region:** Khergam (Navsari) 23, Dharampur (Valsad) 18, Kaprada (Valsad) 17, Dangs (Dangs) 16, Chikhli (Navsari) 15, Vansda (Navsari) 14, Waghai (Dangs) 14, Valsad (Valsad) 14, Dang (Dangs) 13, Pardi (Valsad) 13, Daman (Daman) 13, Subir (Dangs) 11, Dolvan (Tapi) 11, Valsad (Valsad) 11,

**Madhya Maharashtra:** Surgana (Nashik) 20, Lonavala (Pune) 15, Igatpuri (Nashik) 14, Peth (Nashik) 12, Mahabaleshwar- (Satara) 12, Ozarkheda - (Nashik) 11, Yaval (Jalgaon) 11, Trimbakshwar (Nashik) 10, Harsul (Nashik) 9, Paud Mulshi (Pune) 7, Velhe (Pune) 6, Dindori (Nashik) 6;

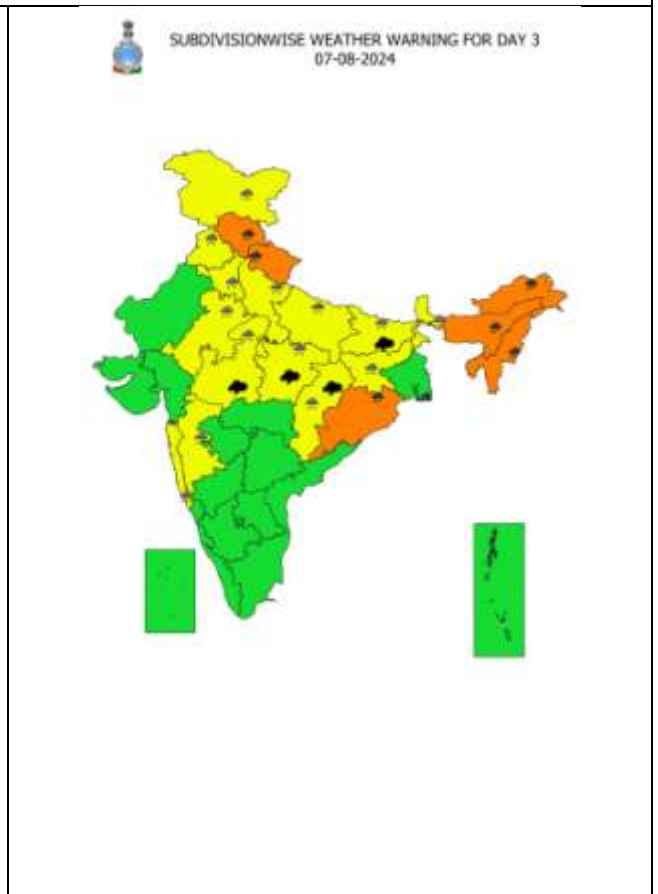
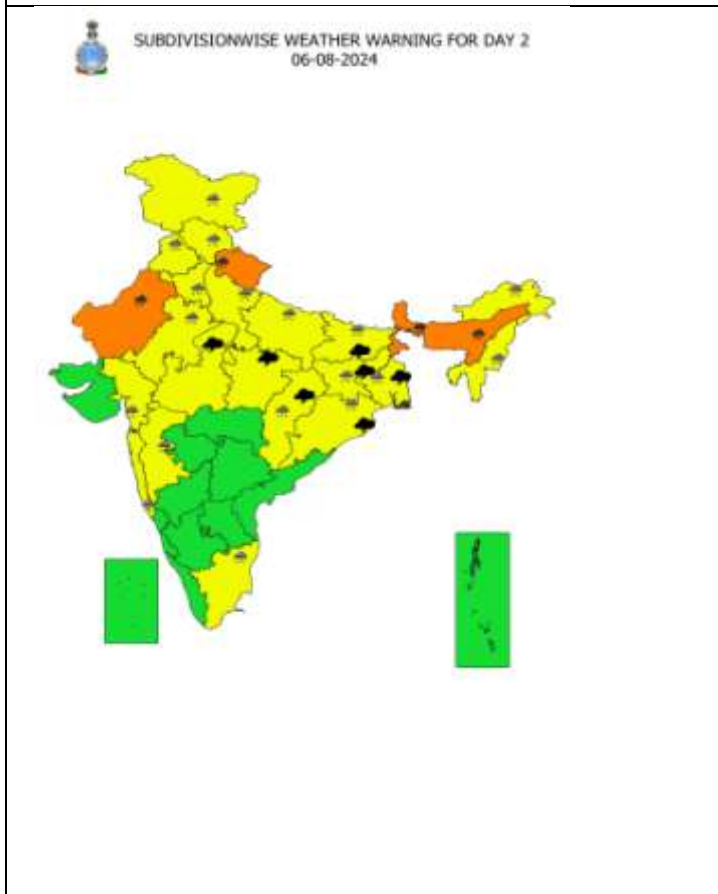
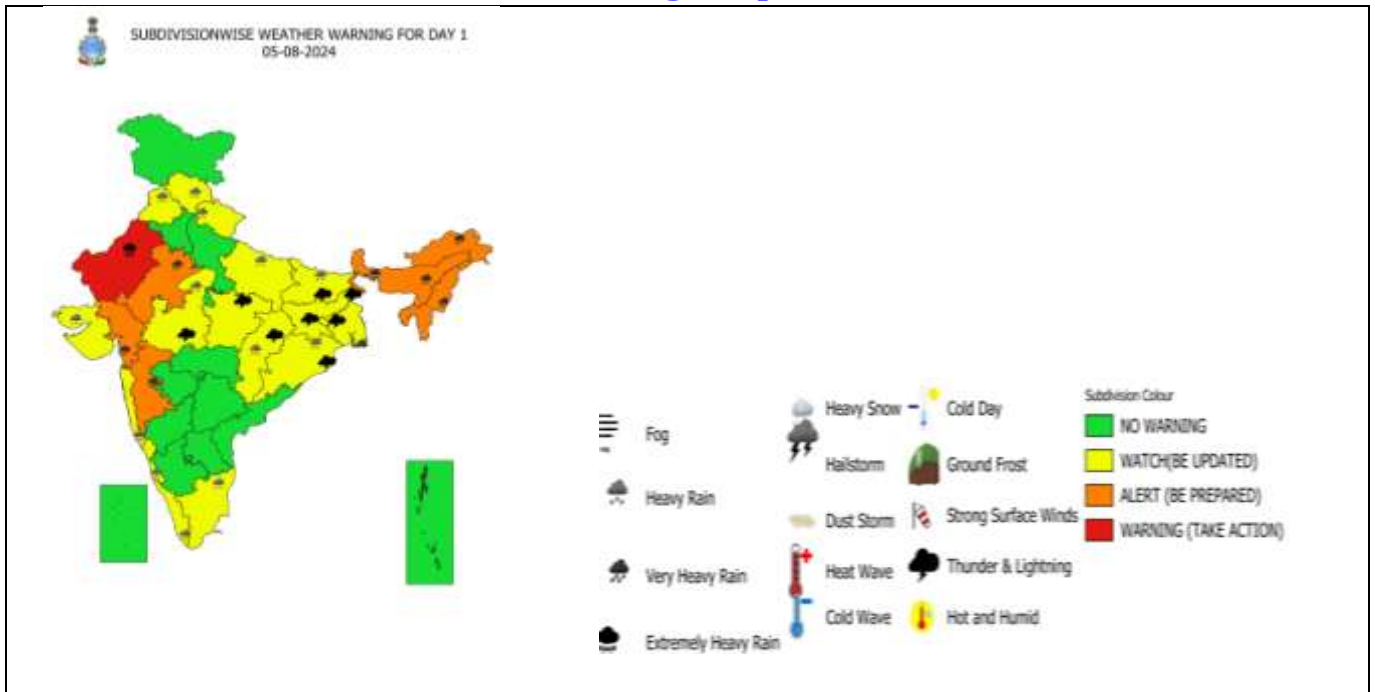
**East Madhya Pradesh:** Buxwaha (Chhatarpur) 15, Orchha (Niwari) 15, Hatta (Damoh) 14, Patera (Damoh) 12, Bina (Sagar) 12, Shahgarh (Sagar) 11, Malthone (Sagar) 11, Mohangarh (Tikamgarh) 9, Amarkantak (Anuppur) 9, Panagar (Jabalpur) 9, Khargapur (Tikamgarh) 8, Junnardeo (Chindwara) 8, Prithvipur (Niwari) 7, Badagaon Dhasan (Tikamgarh) 7, Palera (Tikamgarh) 7, Niwari (Niwari) 7,

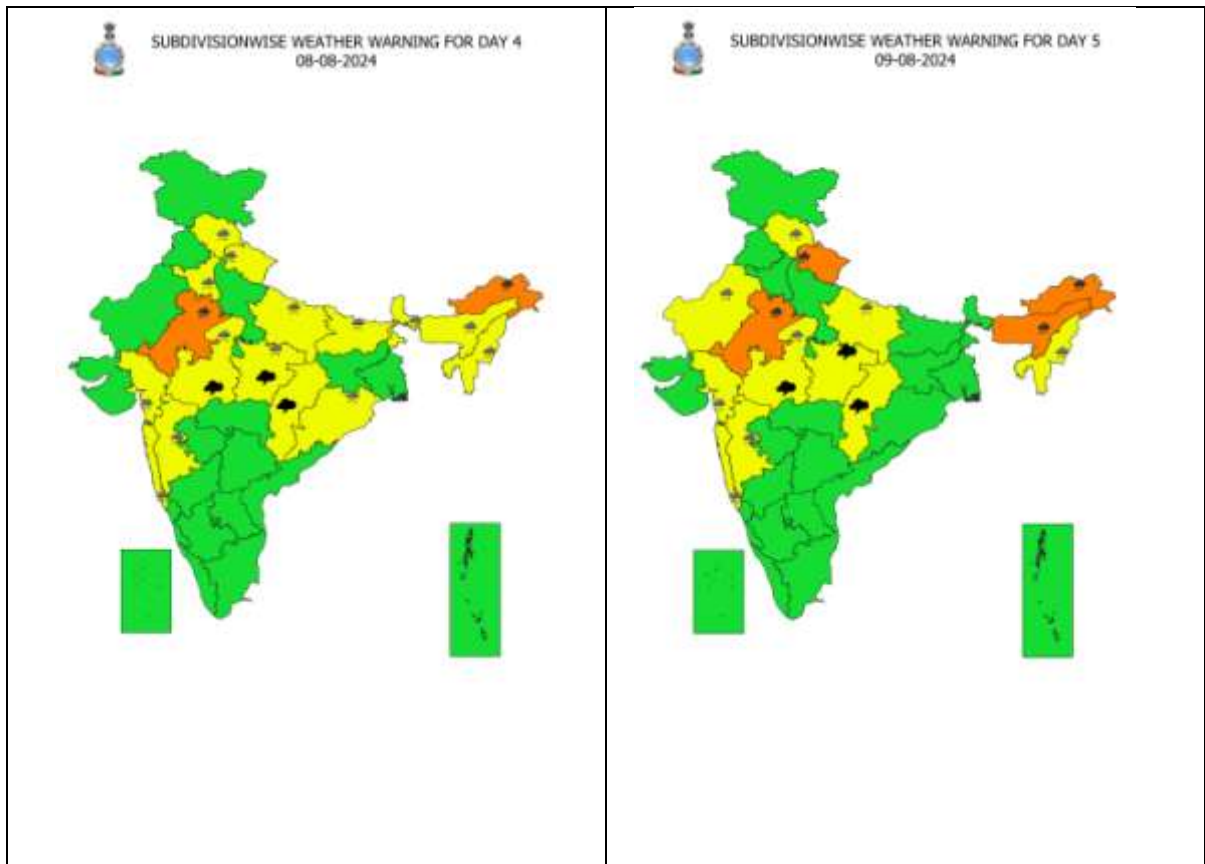
**West Madhya Pradesh:** Malhargarh (Mandsaur) 15, Karhal (Sheopur) 14, Jawad (Neemuch) 13, Pohri (Shivpuri) 13, Kolaras (Shivpuri) 12, Sheopur-aws (Sheopur) 11, Karera (Shivpuri) 11, Pichhore (Shivpuri) 10, Bamori (Guna) 10, Zirapur (Rajgarh) 9, Narwar (Shivpuri) 9, Badoda (Sheopur) 9, Manasa (Neemuch) 9, Shivpuri (Shivpuri) 9, Kayampur (Mandsaur) 9, Raghogarh (Guna) 8, Dhundhadaka (Mandsaur) 8, Biaora (Rajgarh) 8, Khirkiya-arg (Harda) 8, Barod (Agar-malwa) 8, Bhanpura (Mandsaur) 7, Bhimpur (Betul) 7, Nepanagar (Burhanpur) 7, Susner (Agar-malwa) 7, Bairad (Shivpuri) 7, Neemuch (Neemuch) 7, Shamgarh (Mandsaur) 7, Badarwas (Shivpuri) 7, Sitamau (Mandsaur) 7, Pachore (Rajgarh) 7,

**Konkan & Goa:** Vikramgad (Palghar) 15, Jawhar (Palghar) 15, Mokheda (Palghar) 9, Talasari (Palghar) 9, Khalapur (Raigad) 8, Pen (Raigad) 8, Palghar (Palghar) 7, Matheran (Raigad) 7,



# Warning Graphics

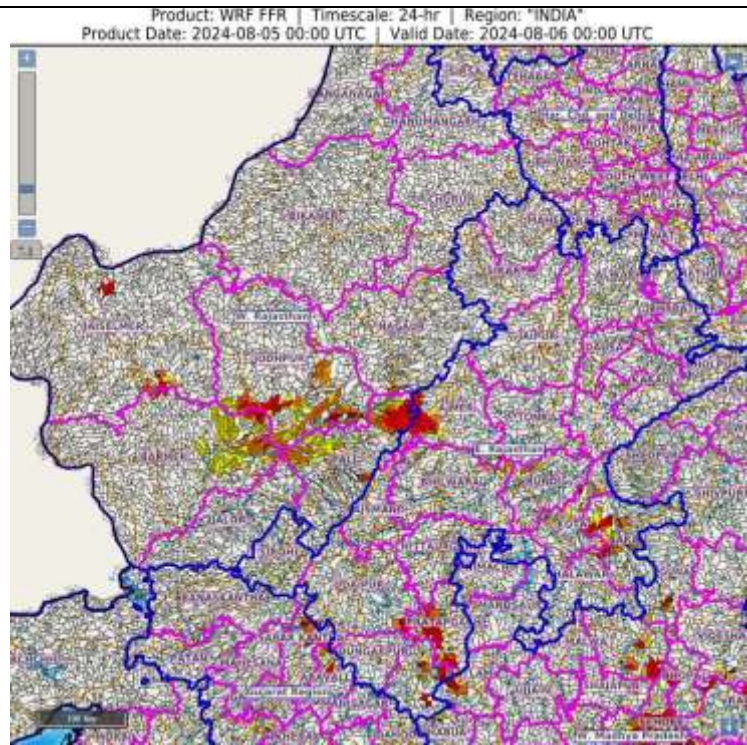




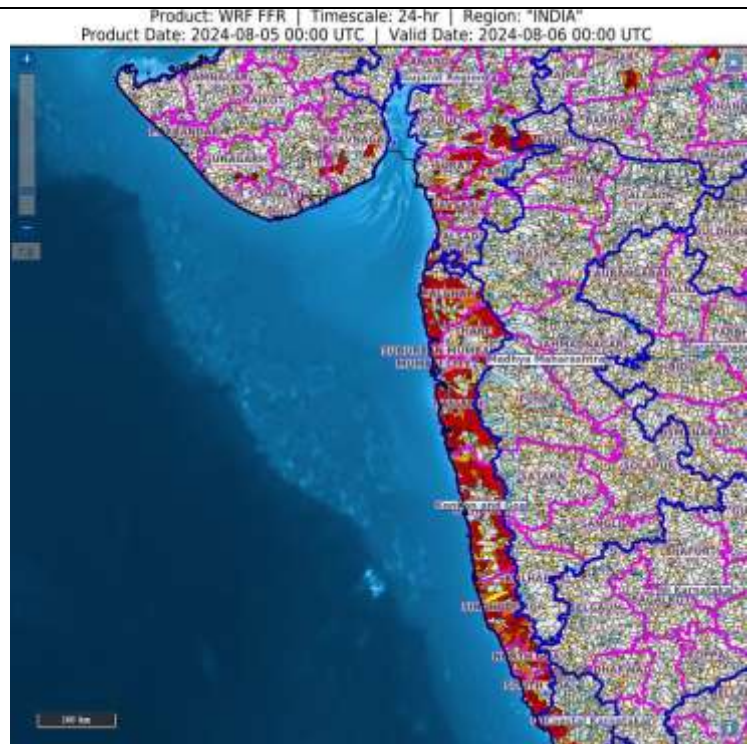
- Action may be taken based on **ORANGE AND RED** COLOUR warnings.
- Vulnerable regions likely urban and hilly areas action may be initiated for heavy rainfall warning.
- As the lead period increases forecast accuracy decreases.

## Flash Flood Guidance

**24 hours Outlook for the Flash Flood Risk (FFR) till 0530 IST of 06-08-2024 :**  
**Low to Moderate flash flood risk** likely over few watersheds & neighbourhoods of **East Rajasthan** and **West Rajasthan** Met Sub-divisions during next 24 hours. Surface runoff/ Inundation may occur at some fully saturated soils & low-lying areas over AoC as shown in map due to expected rainfall occurrence in next 24 hours.



**24 hours Outlook for the Flash Flood Risk (FFR) till 0530 IST of 06-08-2024 :**  
**Low to Moderate flash flood risk** likely over few watersheds & neighbourhoods of **South Gujarat Region** and **Konkan & Goa** Met Sub-divisions during next 24 hours. Surface runoff/ Inundation may occur at some fully saturated soils & low-lying areas over AoC as shown in map due to expected rainfall occurrence in next 24 hours.



### Flash Flood Risk

 **High Risk (Take Action)**

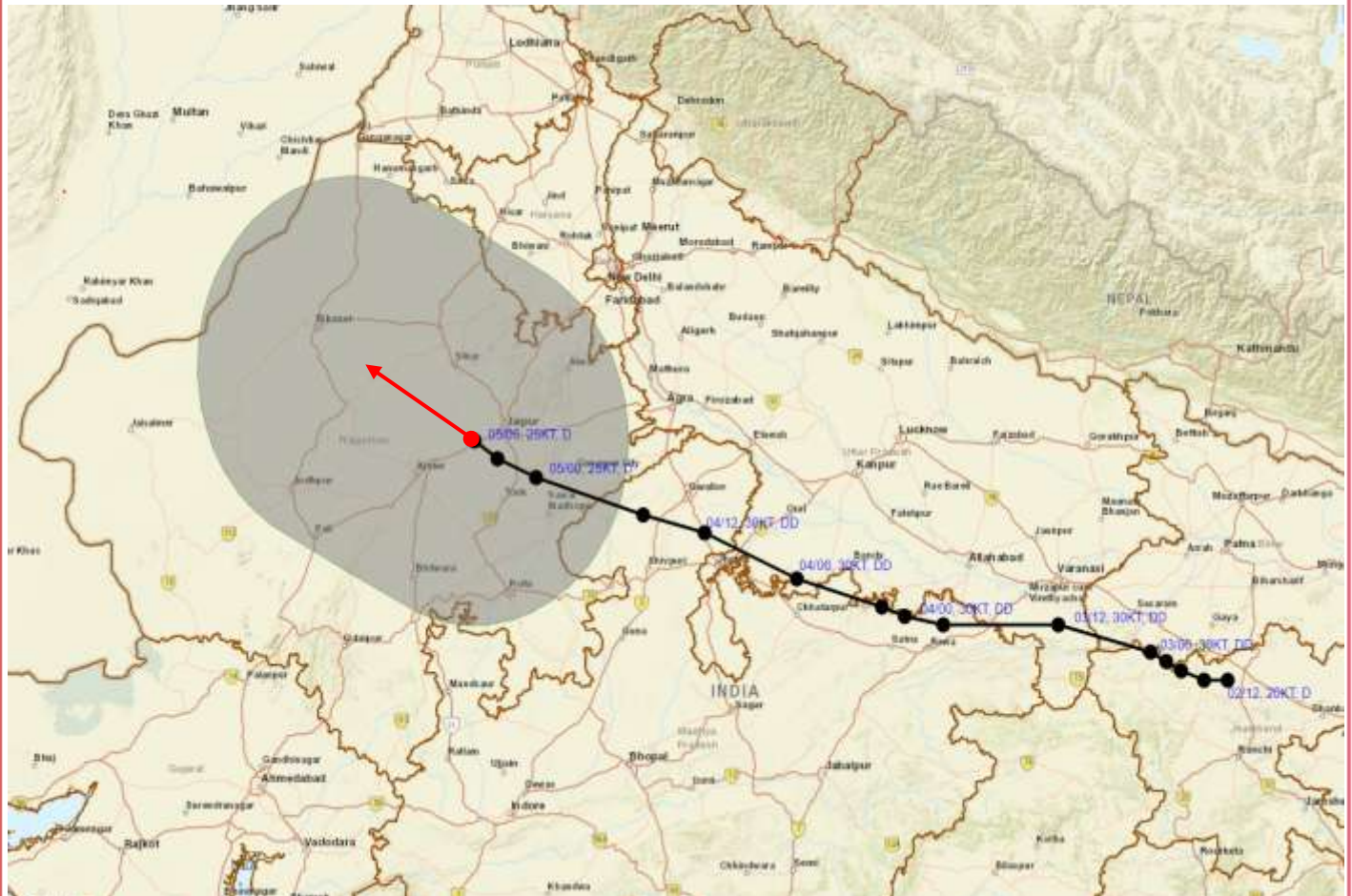
 **Moderate Risk (Be Prepared)**

 **Low Risk (Be Updated)**





**OBSERVED AND FORECAST TRACK ALONGWITH WIND DISTRIBUTION IN ASSOCIATION WITH DEPRESSION OVER NORTHEAST RAJASTHAN AND NEIGHBOURHOOD BASED ON 1130 IST (0600 UTC) OF 05th AUGUST, 2024.**



DATE/TIME IN UTC  
IST=UTC + 0530

L: LOW PRESSURE AREA

WML: WELL MARKED LOW PRESSURE AREA

D: DEPRESSION (17-27 KT)

DD: DEEP DEPRESSION (28-33 KT)

CS: CYCLONIC STORM (34-47 KT)

SCS: SEVERE CYCLONIC STORM (48-63KT)

VSCS: VERY SEVERE CYCLONIC STORM (64-89 KT)

ESCS: EXTREMELY SEVERE CYCLONIC STORM (90-119 KT)

SuCS: SUPER CYCLONIC STORM (≥ 120 KT)

- LESS THAN 34 KT
- 34-47 KT
- ≥ 48 KT
- OBSERVED TRACK
- FORECAST TRACK
- ▲ CONE OF UNCERTAINTY
- AREA OF MAXIMUM SUSTAINED WIND SPEED:
- 40-50 KMPH GUSTING TO 60 KMPH