



**India Meteorological Department  
(Ministry of Earth Sciences)**

**NATIONAL BULLETIN NO. 9 (BOB/07/2024)**

**TIME OF ISSUE: 0230 HOURS IST**

**DATED: 27.11.2024**

**FROM: INDIA METEOROLOGICAL DEPARTMENT (FAX NO. 24643965/24699216/24623220)**

**TO: CONTROL ROOM, NDM, MINISTRY OF HOME AFFAIRS (FAX.NO. 23093750)**

**CONTROL ROOM NDMA (FAX.NO. 26701729)**

**CABINET SECRETARIAT (FAX.NO.23012284, 23018638)**

**PS TO HON'BLE MINISTER FOR S & T AND EARTH SCIENCES (FAX NO.23316745)**

**SECRETARY, MOES (FAX NO. 24629777)**

**H.Q. (INTEGRATED DEFENCE STAFF AND CDS) (FAX NO. 23005137/23005147)**

**DIRECTOR GENERAL, DOORDARSHAN (23385843)**

**DIRECTOR GENERAL, AIR (23421105, 23421219)**

**PIB MOES (FAX NO. 23389042)**

**UNI (FAX NO. 23355841)**

**D.G. NATIONAL DISASTER RESPONSE FORCE (NDRF) (FAX NO. 26105912, 2436 3260)**

**DIRECTOR, PUNCTUALITY, INDIAN RAILWAYS (FAX NO. 23388503)**

**CHIEF SECRETARY, ANDAMAN & NICOBAR ISLANDS (FAX NO. 03192-232656)**

**CHIEF SECRETARY, TAMIL NADU (FAX NO. 044-25672304)**

**CHIEF SECRETARY, ANDHRA PRADESH (FAX NO. 0863-2441029)**

**CHIEF SECRETARY, PUDUCHERRY (FAX NO. 0413-2334145)**

**CHIEF SECRETARY, ODISHA (FAX NO. 0674-2536660)**

**Sub: Deep depression over Southwest Bay of Bengal**

The Deep Depression over Southwest Bay of Bengal moved nearly northwards with a speed of 10 kmph during past 6 hours and lay centred at 2330 hours IST of yesterday, the 26<sup>th</sup> November 2024 over the same region near latitude 7.5°N and longitude 82.6°E, about 190 km southeast of Trincomalee, 470 km southeast of Nagappattinam, 580 km south-southeast of Puducherry and 670 km south-southeast of Chennai.

It is very likely to continue to move north-northwestwards and intensify further into a cyclonic storm on 27<sup>th</sup> November. Thereafter, it will continue to move north-northwestwards towards Tamil Nadu coast skirting Sri Lanka coast during subsequent 2 days.

The system is being tracked by DWR Karaikal.

A continuous watch is being maintained for the movement and intensification of system.

Forecast track and intensity are given in the following table:

Date/ Time (IST)	Position (Lat. °N/ long. °E)	Maximum sustained surface wind speed (Kmph)	Category of cyclonic disturbance
26.11.24/2330	7.5/82.6	55-65 gusting to 75	Deep Depression
27.11.24/0530	7.9/82.5	55-65 gusting to 75	Deep Depression
27.11.24/1130	8.4/82.4	55-65 gusting to 75	Deep Depression
27.11.24/1730	8.9/82.3	60-70 gusting to 80	Cyclonic Storm
27.11.24/2330	9.4/82.2	65-75 gusting to 85	Cyclonic Storm
28.11.24/1130	10.2/82.0	65-75 gusting to 85	Cyclonic Storm
28.11.24/2330	11.0/81.8	65-75 gusting to 85	Cyclonic Storm
29.11.24/1130	11.8/81.5	60-70 gusting to 80	Cyclonic Storm
29.11.24/2330	12.6/81.1	60-70 gusting to 80	Cyclonic Storm

### **Warnings:**

#### **(i) Rainfall Warning:**

**Tamil Nadu & Puducherry:** Heavy to very heavy rainfall at a few places with extremely heavy rainfall at isolated places over Tamil Nadu & Puducherry on 27<sup>th</sup> and heavy to very heavy rainfall at isolated places is likely on 28<sup>th</sup> and heavy rainfall at isolated places on 29<sup>th</sup> November.

**Andhra Pradesh & Rayalaseema:** Light to moderate rainfall at many places with heavy rainfall at isolated places is likely on 27<sup>th</sup> November and heavy to very heavy rainfall on 28<sup>th</sup> and 29<sup>th</sup> November.

**Kerala:** Light to moderate rainfall at many places with heavy rainfall at isolated places is likely on 27<sup>th</sup> & 28<sup>th</sup> November.

#### **(ii) Wind warning:**

- Squally wind speed reaching 55-65 kmph gusting to 75 kmph is likely to prevail over southwest Bay of Bengal and along & off Sri Lanka coast till 27<sup>th</sup> morning. It is likely to increase becoming Gale wind speed reaching 60-70 kmph gusting to 80 kmph over southwest Bay of Bengal and along & off Sri Lanka coasts from evening of 27<sup>th</sup> November. Thereafter, Gale wind speed reaching 65-75 kmph gusting to 85 kmph is likely to prevail over southwest Bay of Bengal till morning and decrease marginally becoming 60-70 kmph gusting to 80 kmph from afternoon of 29<sup>th</sup> November.
- Squally wind speed reaching 45-55 kmph gusting to 65 kmph is likely to prevail over adjoining areas of westcentral Bay of Bengal till 27<sup>th</sup> morning. It would increase gradually becoming 55-65 kmph gusting to 75 kmph over the same region till 29<sup>th</sup> November evening.
- Squally wind speed reaching 45-55 kmph gusting to 65 kmph is likely to prevail along & off Tamil Nadu- Puducherry and south Andhra Pradesh coasts till 27<sup>th</sup> morning. Thereafter, it is likely to increase becoming 55-65 kmph gusting to 75 kmph from 27<sup>th</sup> evening till 29<sup>th</sup> November evening.

#### **(iii) Sea condition:**

- Rough to very Rough Sea condition is very likely to prevail over southwest Bay of Bengal and along & off Sri Lanka coast till 27<sup>th</sup> morning. It is likely to become high from 27<sup>th</sup> evening till 29<sup>th</sup> November.
- Rough to very rough Sea condition is very likely to prevail along and off Tamil Nadu- Puducherry and south Andhra Pradesh coasts till 29<sup>th</sup> November.
- Rough to very Rough Sea condition is likely to prevail over adjoining westcentral Bay of Bengal from 27<sup>th</sup> evening till 29<sup>th</sup> November.

**(iv) Fisherman warning:**

- Fishermen are advised not venture into
  - southwest Bay of Bengal and along & off Sri Lanka & Tamilnadu coasts till 29<sup>th</sup> November, 2024.
  - Adjoining areas of Westcentral Bay of Bengal and along & off south Andhra Pradesh coast during 27<sup>th</sup> to 29<sup>th</sup> November 2024.
- Fishermen out at sea are advised to return to coasts immediately.

**(v) Impact Expected [over Tamil Nadu – Puducherry and south Andhra Pradesh]**

- Localized Flooding of roads, water logging in low lying areas and closure of underpasses mainly in urban areas of the above region.
- Occasional reduction in visibility due to heavy rainfall.
- Disruption of traffic in major cities due to water logging in roads leading to increased travel time.
- Minor damage to kutcha roads.
- Damage to horticulture and standing crops in some areas due to inundation.

**(vi) Action Suggested**

- Fishermen are advised not venture into
  - southwest Bay of Bengal and along & off Sri Lanka & Tamilnadu coasts till 29<sup>th</sup> November, 2024.
  - Adjoining areas of Westcentral Bay of Bengal and along & off south Andhra Pradesh coast during 27<sup>th</sup> to 29<sup>th</sup> November 2024.
- Fishermen out at sea are advised to return to coasts immediately
- Check for traffic congestion on your route before leaving for your destination.
- Follow any traffic advisories that are issued in this regard.
- Avoid going to areas that face the water logging problems often.
- Special care may be taken for fishing ponds and poultries over coastal areas.
- Avoid staying in vulnerable structure.

**(vii) Agromet advisories [over Tamil Nadu – Puducherry and Andhra Pradesh]**

- Provide adequate drainage facilities for the removal of excess water from rice, cotton, sugarcane, turmeric and vegetable fields, coconut and banana orchards. Provide mechanical support to banana plants to prevent lodging.
- Make arrangements to drain out excess water from the standing crop fields and fruit orchards in Kerala and Coastal Andhra Pradesh.
- Harvest the matured crops and keep it in safe place.
- Provide mechanical support to horticultural crops and staking to vegetables.

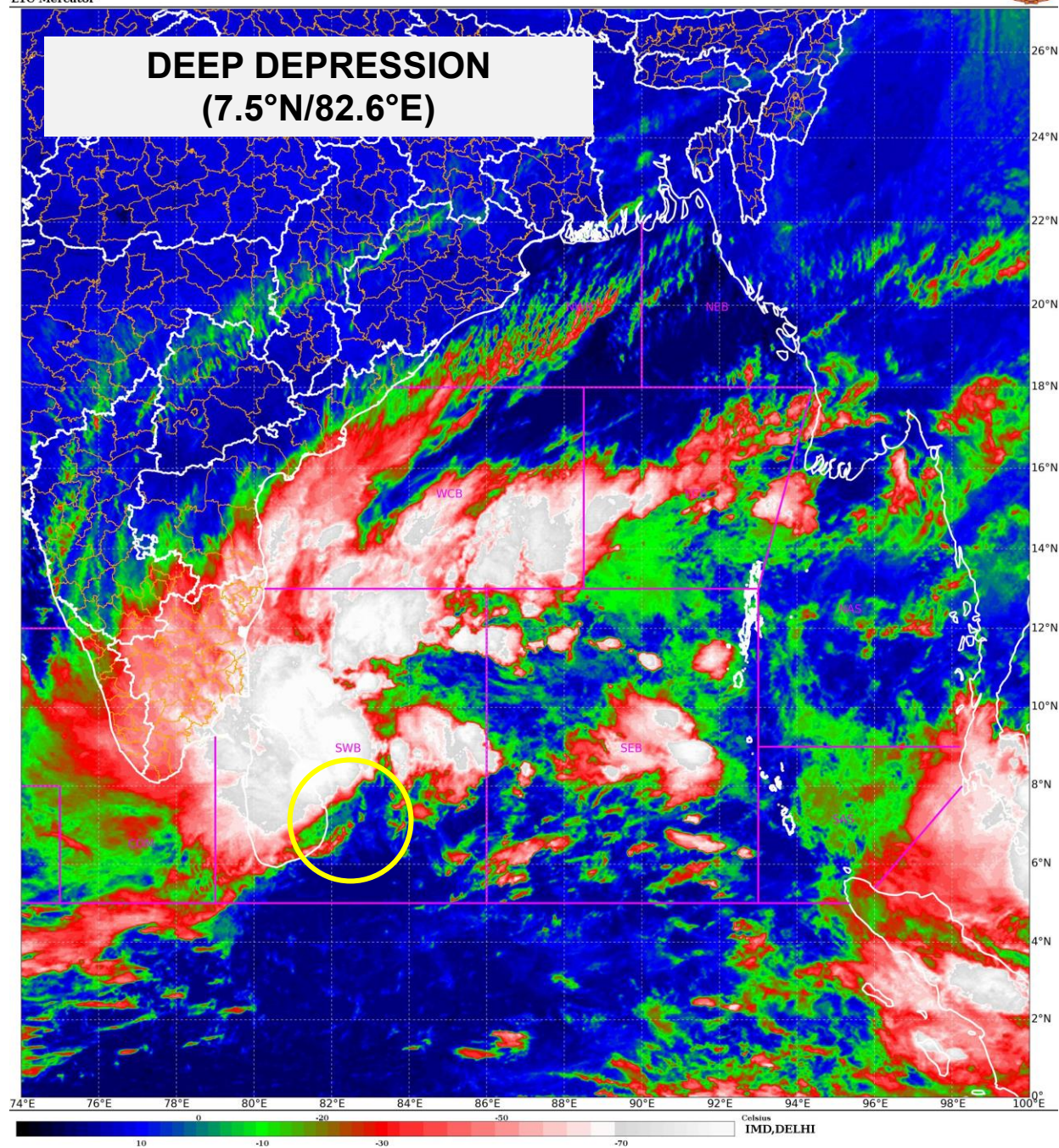
**Next bulletin will be issued at 0830 hours IST of today, the 27<sup>th</sup> November, 2024.**

**(Dr. Shashi Kant)  
Scientist D, RSMC, New Delhi**

Copy to: ACWC Kolkata/ACWC Chennai/CWC Bhubaneswar/MC, Amaravati/MC, Thiruvananthapuram/CWC, Vishakhapatnam

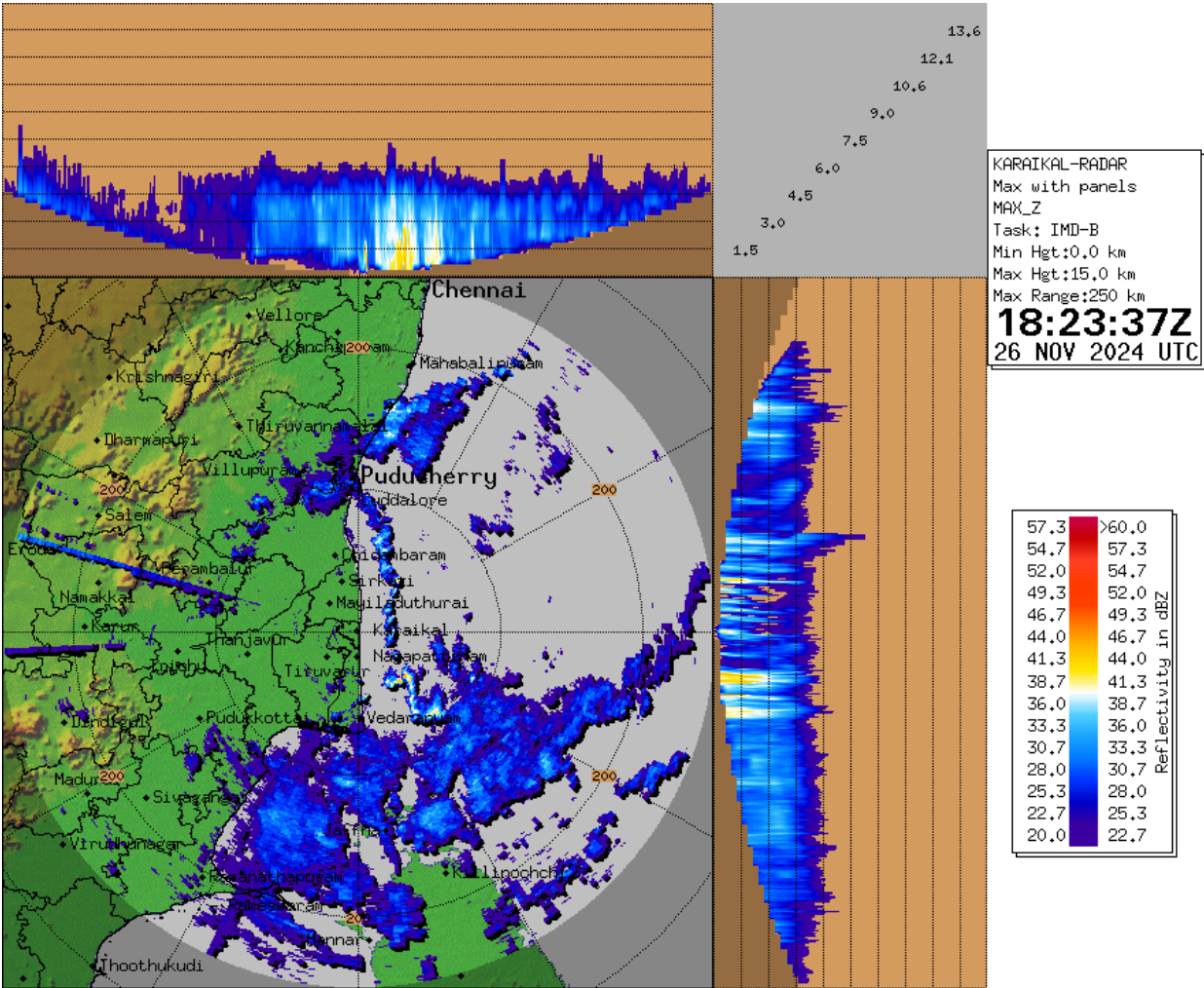
SAT : INSAT-3DR IMG  
IMG\_TIR1\_TEMP 10.8 um  
LIC Mercator

26-11-2024/(1945 to 2012) GMT  
27-11-2024/(0115 to 0142) IST



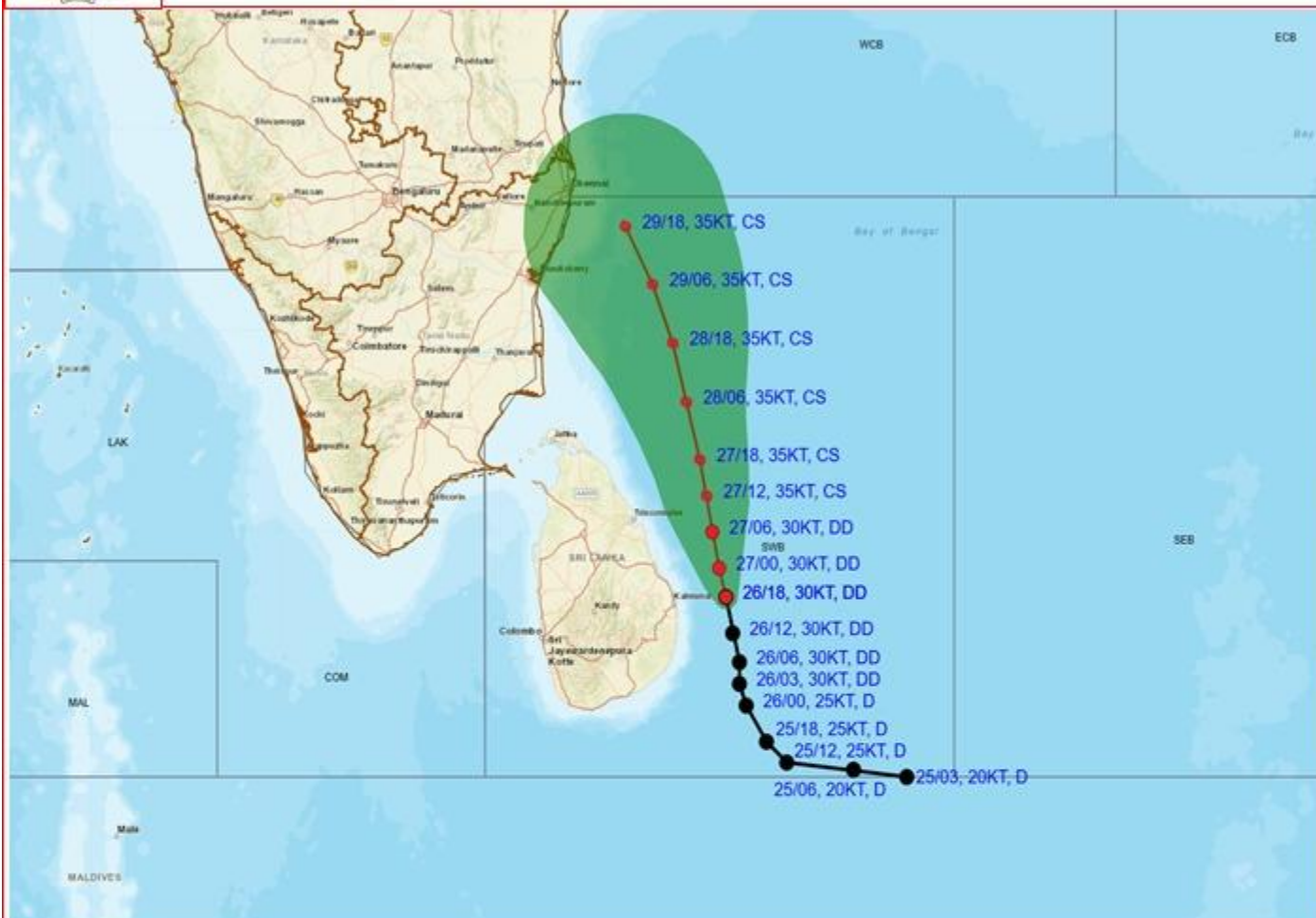


Doppler Weather Radar Observations (Max Z) at Karaikal





**OBSERVED AND FORECAST TRACK ALONG WITH CONE OF UNCERTAINTY OF DEEP DEPRESSION OVER SOUTHWEST BAY OF BENGAL BASED ON 1800 UTC (2330 HRS. IST) OF 26<sup>TH</sup> NOVEMBER, 2024**



DATE/TIME : IN UTC  
IST : UTC + 0530  
KT : NAUTICAL MILE/HOUR = 1.85 KM/HOUR  
LPA : LOW PRESSURE AREA  
WML : WELL MARKED LOW PRESSURE AREA  
D : DEPRESSION (17-27 KT)  
DD : DEEP DEPRESSION (28-33 KT)  
CS : CYCLONIC STORM (34-47 KT)  
SCS : SEVERE CYCLONIC STORM (48-63 KT)  
VSCS : VERY SEVERE CYCLONIC STORM (64-89 KT)  
ECS : EXTREMELY SEVERE CYCLONIC STORM (90-119 KT)  
SuCS : SUPER CYCLONIC STORM (≥120 KT)

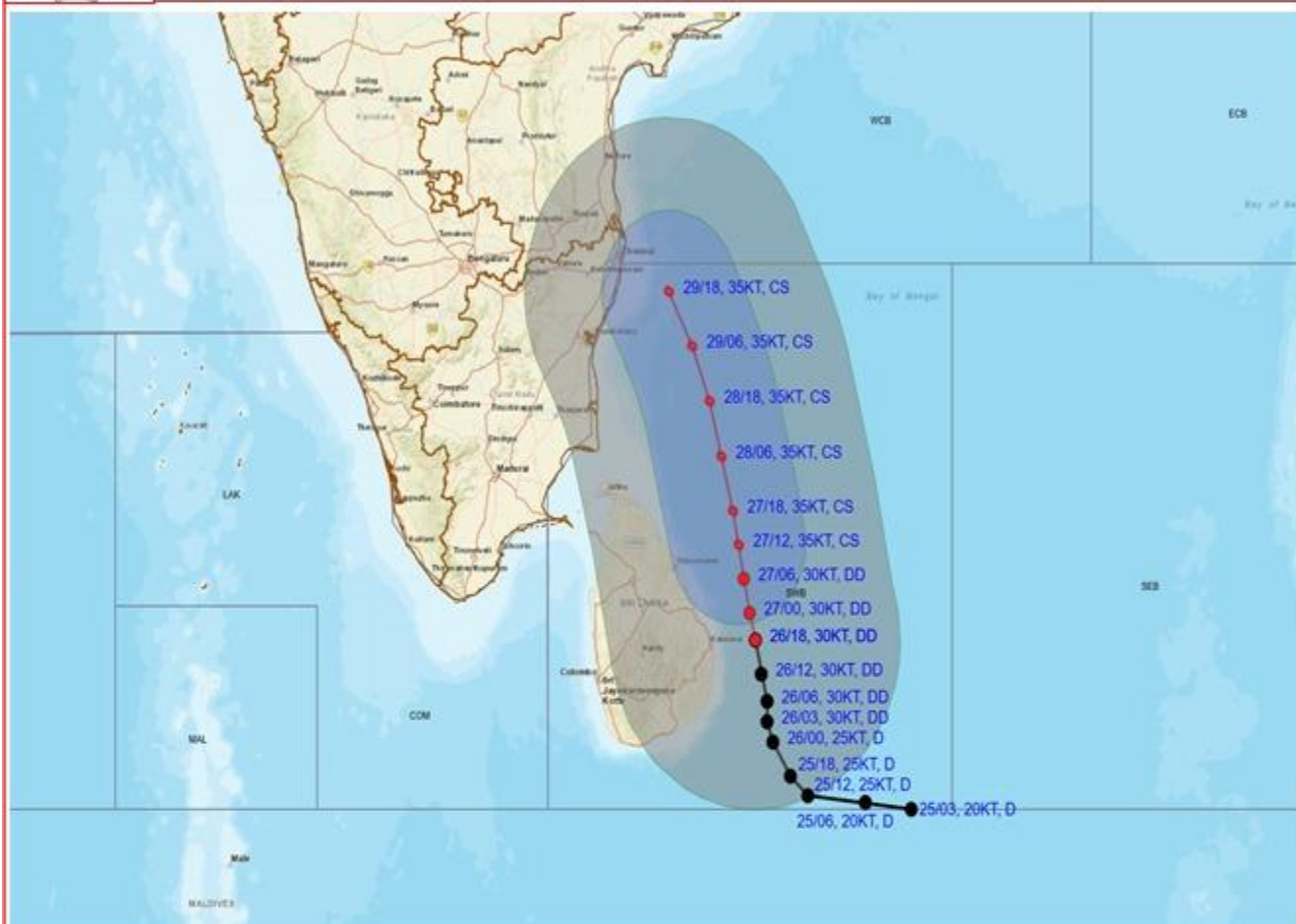
● LESS THAN 34 KT  
○ 34-47 KT  
○ ≥ 48 KT  
— OBSERVED TRACK  
— FORECAST TRACK  
■ CONE OF UNCERTAINTY

Forecast	DISTANCE (KM) AND DIRECTION FROM STATIONS				
Date and Time (UTC)	BATTICALOA	TRINCOMALEE	NAGAPPATTINAM	PUDUCHERRY	CHENNAI/MINAMBAKKAM
26.11.24/1800	100, ESE	190, SE	470, SE	580, SSE	670, SSE
27.11.24/1800	200, NNE	140, NE	300, ESE	390, SE	460, SSE
28.11.24/1800	370, N	280, NNE	210, E	240, ESE	280, SE
29.11.24/1800	550, N	450, N	250, NNE	160, ENE	110, ESE





**OBSERVED AND FORECAST TRACK ALONGWITH QUADRANT WIND DISTRIBUTION OF DEEP DEPRESSION OVER SOUTHWEST BAY OF BENGAL BASED ON 1800 UTC (2330 HRS. IST) OF 26<sup>TH</sup> NOVEMBER, 2024.**



DATE/TIME : IN UTC  
 IST : UTC + 0530  
 KT : NAUTICAL MILE/ HOUR = 1.85 KM/ HOUR  
 LPA : LOW PRESSURE AREA  
 WML : WELL MARKED LOW PRESSURE AREA  
 D : DEPRESSION (17-27 KT)  
 DD : DEEP DEPRESSION (28-33 KT)  
 CS : CYCLONIC STORM (34-47 KT)  
 SCS : SEVERE CYCLONIC STORM (48-63 KT)  
 VSCS : VERY SEVERE CYCLONIC STORM (64-89 KT)  
 ESCS : EXTREMELY SEVERE CYCLONIC STORM (90-119 KT)  
 SuCS : SUPER CYCLONIC STORM ( $\geq 120$  KT)

● LESS THAN 34 KT  
 ○ 34-47 KT  
 ●  $\geq 48$  KT  
 — OBSERVED TRACK  
 — FORECAST TRACK  
 — CONE OF UNCERTAINTY  
 AREA OF MAXIMUM SUSTAINED WIND SPEED:  
 28-33 KT (52-61 KMPH)  
 34-49 KT (62-91 KMPH)  
 50-63 KT (92-117 KMPH)  
 $\geq 64$  KT ( $\geq 118$  KMPH)

**IMPACT OVER THE SEA**

MSW (knot/kmph)	Impact	Action
28-33 (52-61)	Very rough seas	Total suspension of fishing operations
34-49 (62-91)	High to very high seas	Total suspension of fishing operations
50-63 (92-117)	Very high seas	Total suspension of fishing operations
$\geq 64$ ( $\geq 118$ )	Phenomenal	Total suspension of fishing operations

## Flash Flood Guidance

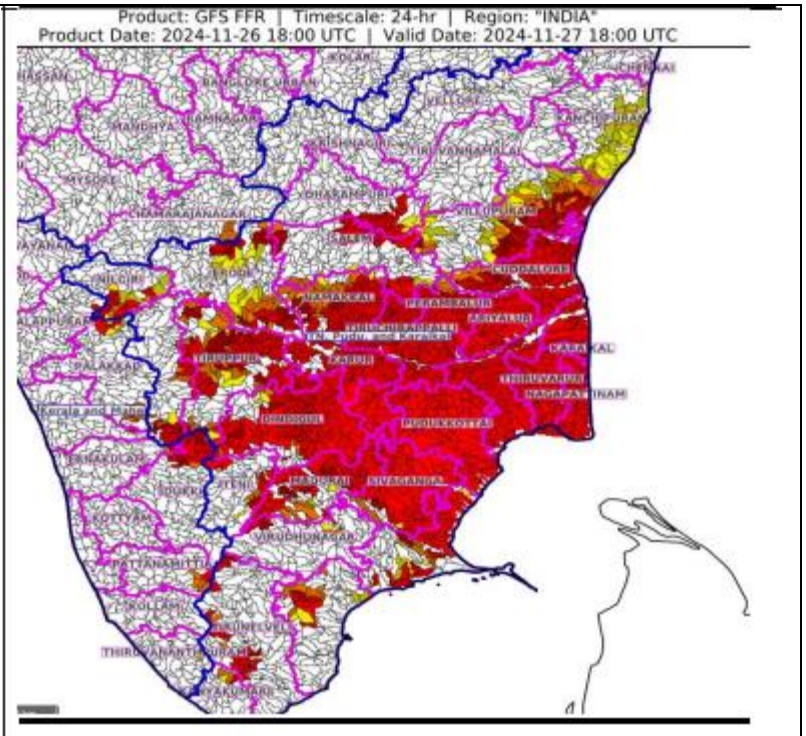
### **24 hours Outlook for the Flash Flood Risk (FFR) till 2330 IST of 27-11-2024 :**

**High flash flood risk** likely over few watersheds & neighbourhoods of following Met Sub-divisions during next 24 hours.




#### **Tamil Nadu - Puducherry & Karaikal -**

Karaikal, Mahe, Puduchery, Ariyalur, Chengalpattu, Coimbatore, Cuddalore, Dharampuri, Dindigul, Erode, Kallakurichi, Kanchipuram, Kanyakumari, Karur, Madurai, Mayiladuthurai, Nagapattinam, Namakkal, Nilgiri, Perambalur, Pudukkottai, Ramanathapuram, Ranipet, Salem, Sivaganga, Teni, Tenkasi, Thanjavur, Thiruvavarur, Tiruchirappalli, Tirunelveli, Tirupattur, Tiruppur, Tiruvannamalai, Tuticorin, Villupuram and Virudhunagar districts.

Surface runoff/ Inundation may occur at some fully saturated soils & low-lying areas over area of concern as shown in map due to expected rainfall occurrence in next 24 hours.

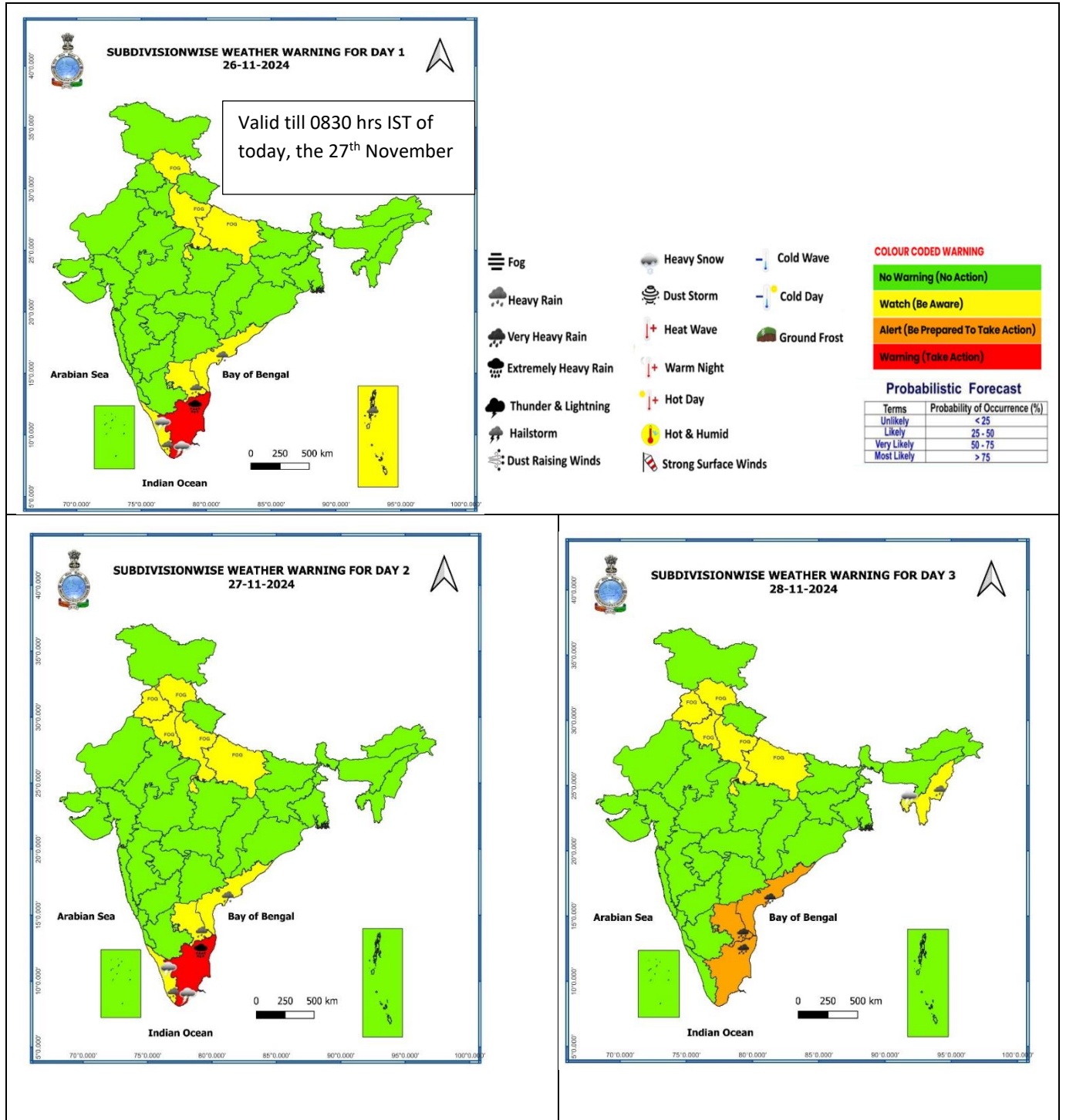


### **Flash Flood Risk**

	<b>High Risk (Take Action)</b>
	<b>Moderate Risk (Be Prepared)</b>
	<b>Low Risk (Be Updated)</b>

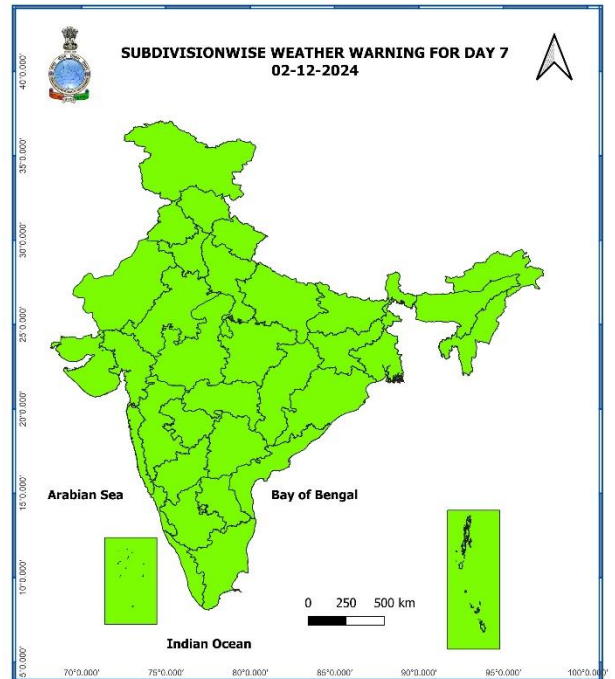
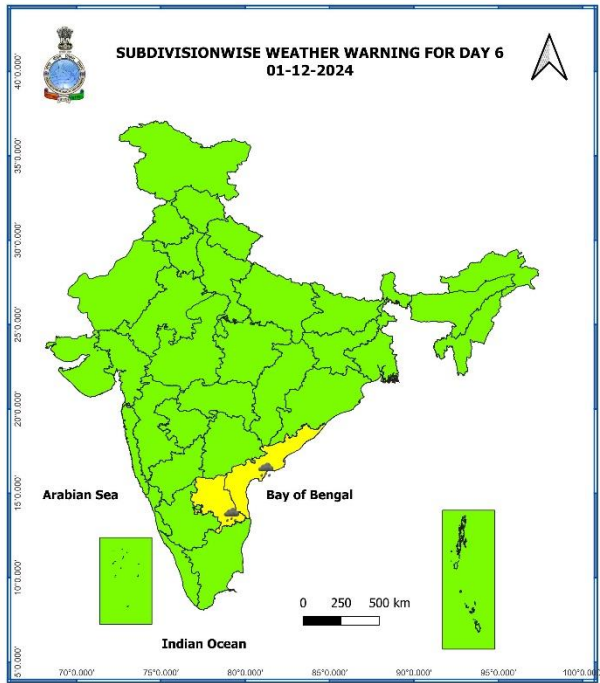
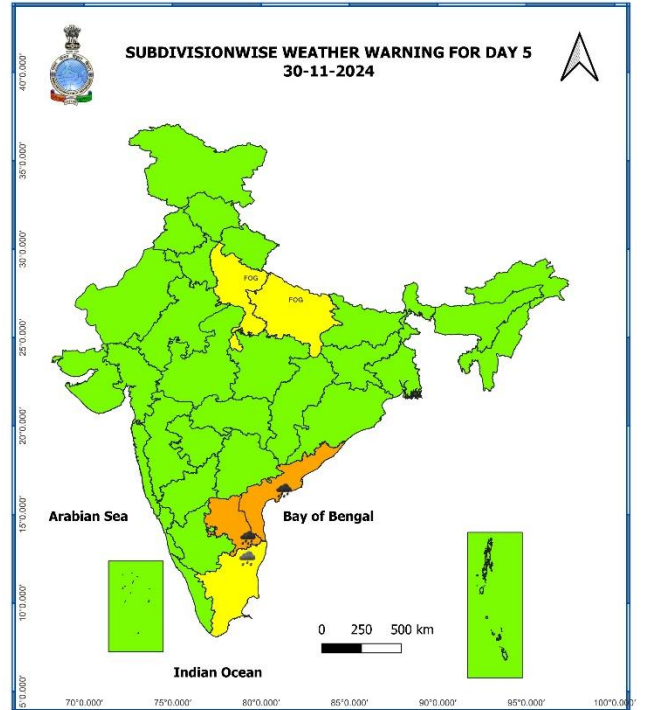
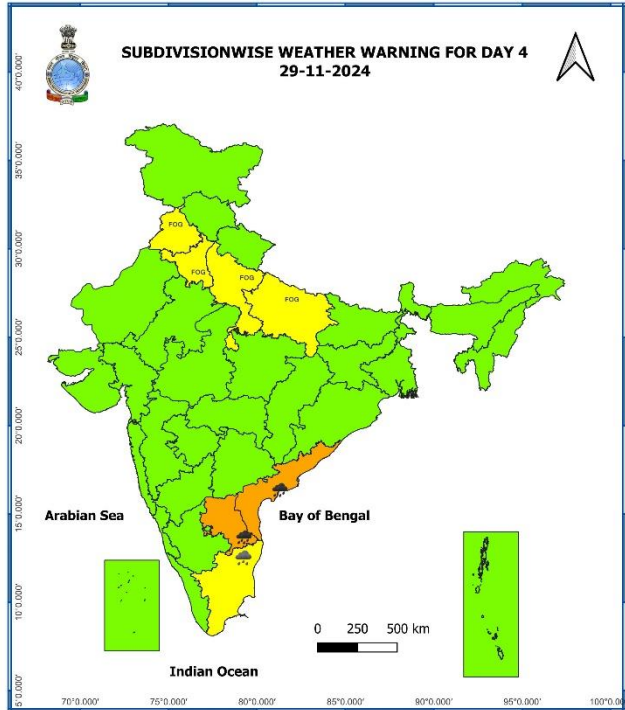


## Weather Warning Graphics



**SUBDIVISIONWISE WEATHER WARNING FOR DAY 2**  
27-11-2024

**SUBDIVISIONWISE WEATHER WARNING FOR DAY 3**  
28-11-2024



## Fishermen Warning Graphics

**Day 1: 26.11.2024/05:30PM to 27.11.2024/05:30AM**



**Day 2: 27.11.2024/05:30AM to 28.11.2024/05:30AM**



**Day 3: 28.11.2024/05:30AM to 29.11.2024/05:30AM**



**Day 4: 29.11.2024/05:30AM to 30.11.2024/05:30AM**



**Day 5: 30.11.2024/05:30AM to 01.12.2024/05:30AM**



Squally Weather with wind speed 35-45 kmph gusting to 55 kmph

Squally wind with speed 45-55 kmph gusting to 65 kmph

Deep depression with wind speed 55-65 kmph gusting to 75 kmph

CS with Gale winds with speed 60-80 kmph gusting to 90 kmph

**Fishermen are advised not to venture into the marked areas.**