



**India Meteorological Department
(Ministry of Earth Sciences)**

NATIONAL BULLETIN NO.: 19 (BOB/05/2024)

TIME OF ISSUE: 1130 HOURS IST

DATED: 17.09.2024

**FROM: INDIA METEOROLOGICAL DEPARTMENT (FAX NO. 24643965/24699216/24623220)
TO: CONTROL ROOM, NDM, MINISTRY OF HOME AFFAIRS (FAX.NO. 23093750)
CONTROL ROOM NDMA (FAX.NO. 26701729)
CABINET SECRETARIAT (FAX.NO.23012284, 23018638)
PS TO HON'BLE MINISTER FOR S & T AND EARTH SCIENCES (FAX NO.23316745)
SECRETARY, MOES (FAX NO. 24629777)
H.Q. (INTEGRATED DEFENCE STAFF AND CDS) (FAX NO. 23005137/23005147)
DIRECTOR GENERAL, DOORDARSHAN (23385843)
DIRECTOR GENERAL, AIR (23421105, 23421219)
PIB MOES (FAX NO. 23389042)
UNI (FAX NO. 23355841)
D.G. NATIONAL DISASTER RESPONSE FORCE (NDRF) (FAX NO. 26105912, 2436 3260)
DIRECTOR, PUNCTUALITY, INDIAN RAILWAYS (FAX NO. 23388503)
CHIEF SECRETARY, JHARKHAND (FAX NO. 0651-2400255)
CHIEF SECRETARY, BIHAR (FAX NO. 0612-2217085)
CHIEF SECRETARY, WEST BENGAL (FAX NO. 033-22144328)
CHIEF SECRETARY, ODISHA (FAX NO. 0674-2536660)
CHIEF SECRETARY, CHHATTISGARH (FAX NO. 0771-2221206)
CHIEF SECRETARY, UTTAR PRADESH (FAX NO. 0522-2239283)
CHIEF SECRETARY, MADHYA PRADESH (FAX NO. 0755 – 2441076)
CHIEF SECRETARY, TRIPURA (FAX NO. 0381-2414013, 2413200)
CHIEF SECRETARY, MIZORAM (FAX NO. 0389-2322745, 2320588)
CHIEF SECRETARY, ASSAM (FAX NO. 0361-2260900)
CHIEF SECRETARY, MEGHALAYA (FAX NO. 0364-2225978)**

Sub: Depression over Northeast Chhattisgarh and adjoining Jharkhand

The depression over Jharkhand and adjoining north Chhattisgarh moved west-northwestwards with a speed of 12 kmph during past 6 hours and lay centered at 0830 hours IST of today, the 17th September 2024, over **Northeast Chhattisgarh and adjoining Jharkhand** near latitude 23.7° N and longitude 83.7° E, around 50 km southwest of Daltonganj (Jharkhand), 80 km northeast of Ambikapur (Chhattisgarh), 200 km east-southeast of Sidhi (Madhya Pradesh), 210 km east-northeast of Pendra Road (Chhattisgarh) and 290 km east of Umaria (Madhya Pradesh).

It is likely to continue to move west-northwestwards across north Chhattisgarh, south Uttar Pradesh and adjoining northeast Madhya Pradesh and weaken into a Well-Marked Low Pressure Area during next 12 hours.

Spatial rainfall distribution: Isolated: <25%, A few: 26-50%, Many: 51-75%, Most: 76-100%

Rainfall amount (mm): Heavy rain: 64.5 – 115.5, Very heavy rain: 115.6 – 204.4, Extremely heavy rain: 204.5 or more.

Warnings:

(i) Rainfall warning

Jharkhand: Light to moderate rainfall at most places with **heavy rainfall** at isolated places over Jharkhand on 17th September.

Bihar: Light to moderate rainfall at most places with **heavy rainfall** at isolated places is very likely over South Bihar on 17th September.

Uttar Pradesh: Light to moderate rainfall at many places with **heavy to very heavy rainfall** at isolated places over Southeast Uttar Pradesh on 17th September. Light to moderate rainfall at many places with **heavy rainfall** at isolated places over Southwest Uttar Pradesh on 17th and 18th September.

Madhya Pradesh: Light to moderate rainfall at most places with **heavy to very heavy rainfall** at isolated places is likely over North Madhya Pradesh on 17th September and **heavy rainfall** at isolated places on 18th September over Northwest Madhya Pradesh.

Chhattisgarh: Light to moderate rainfall at most places with **heavy rainfall** at isolated places over North Chhattisgarh on 17th September.

East Rajasthan: Light to moderate rainfall at many places with **heavy rainfall** at isolated places on 17th September.

(ii) Flash Flood Guidance: (Graphics Attached)

24 hours Outlook for the Flash Flood Risk (FFR) till 0530 IST of 18-09-2024:

Low to Moderate flash flood risk likely over few watersheds & neighbourhoods of following Met Sub-divisions during next 24 hours.

Jharkhand - Garhwa district.

Bihar - Bhabua and Rohtas districts.

East Uttar Pradesh - Chandauli, Mirzapur, Prayagraj and Sonbhadra districts.

East Madhya Pradesh - Anuppur, Dindori, Rewa, Satna, Shahdol, Sidhi, Singrauli and Umaria districts.

Chhattisgarh - Korea and Surajpur districts.

Surface runoff/ Inundation may occur at some fully saturated soils and low-lying areas over Area of Concern due to expected rainfall occurrence in next 24 hours.

(iii) Wind warning:

Squally wind speed reaching 40-50 kmph gusting to 60 kmph over North Chhattisgarh and adjoining Southeast Uttar Pradesh & Jharkhand & till 17th September evening and decrease thereafter.

Impact Expected (Jharkhand, North Chhattisgarh, South Bihar, Northeast Madhya Pradesh and southeast Uttar Pradesh due to heavy rainfall and strong winds)

- ✓ Localized Flooding of roads, water logging in low lying areas and closure of underpasses mainly in urban areas of the above region.
- ✓ Occasional reduction in visibility due to heavy rainfall.
- ✓ Disruption of traffic in major cities and roadways due to water logging in roads and poor visibility due to heavy rain leading to increased travel time and incidents
- ✓ Likely disruption of inland water transportation like small boats and trawlers.
- ✓ Minor damage to kutchra roads.
- ✓ Possibilities of damage to vulnerable structure.
- ✓ Localized Landslides/Mudslides/landslips/mud slips/land sinks/mud sinks.
- ✓ Damage to horticulture and standing crops in some areas due to inundation and wind.
- ✓ It may lead to riverine flooding in some river catchments (for riverine flooding please visit Web page of CWC)

Spatial rainfall distribution: Isolated: <25%, A few: 26-50%, Many: 51-75%, Most: 76-100%

Rainfall amount (mm): Heavy rain: 64.5 – 115.5, Very heavy rain: 115.6 – 204.4, Extremely heavy rain: 204.5 or more.

Action Suggested (Jharkhand, North Chhattisgarh, South Bihar and North Madhya Pradesh, southeast Uttar Pradesh due to heavy rainfall and strong winds)

- ✓ Judicious regulation of surface transports including railways.
- ✓ Check for traffic congestion on your route before leaving for your destination.
- ✓ Follow any traffic advisories that are issued in this regard.
- ✓ Avoid going to areas that face the water logging problems often.
- ✓ Avoid staying in vulnerable structure.

Agromet advisories for Heavy Rainfall likely over various parts of the country

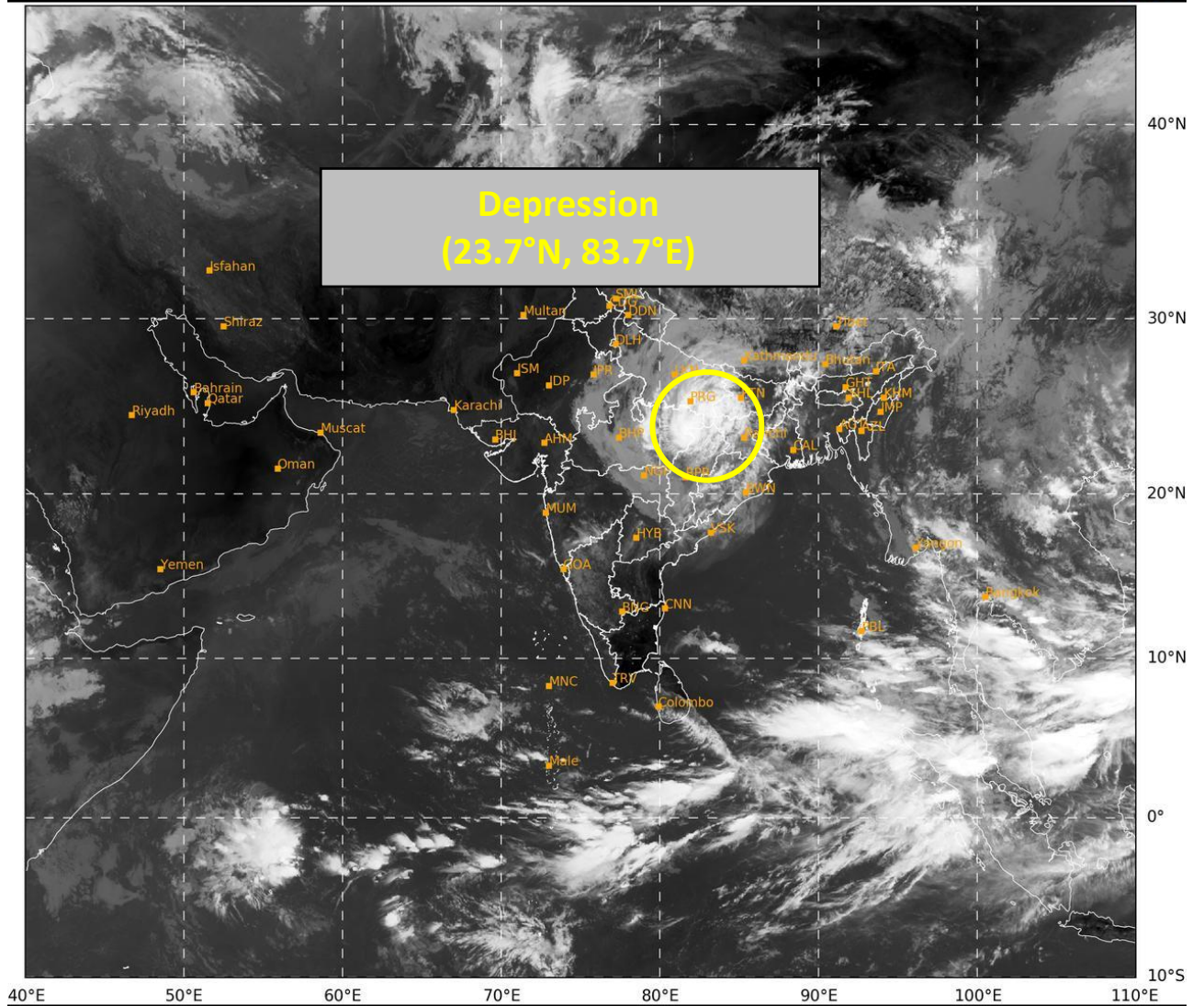
- ✓ Provide mechanical support to horticultural crops & staking to vegetables.
- ✓ Keep the harvested produce at safer places.

24 hours accumulated realised rainfall during 0830 hours IST of yesterday, the 16th September to 0830 hours IST of today, the 17th September is placed at Annexure-1.

The next bulletin will be issued at 1430 hrs IST of the 17th September, 2024.

(Monica Sharma)
Scientist-D, RSMC, New Delhi

Copy to: CRS, Pune/RMC Chennai /RMC Kolkata/RMC Guwahati/MC Bhubaneswar/MC Ranchi/MC Patna/MC Raipur/ MC Agartala/ MC Shillong/MC Aizawl/Mc, Bhopal/MC Lucknow



396

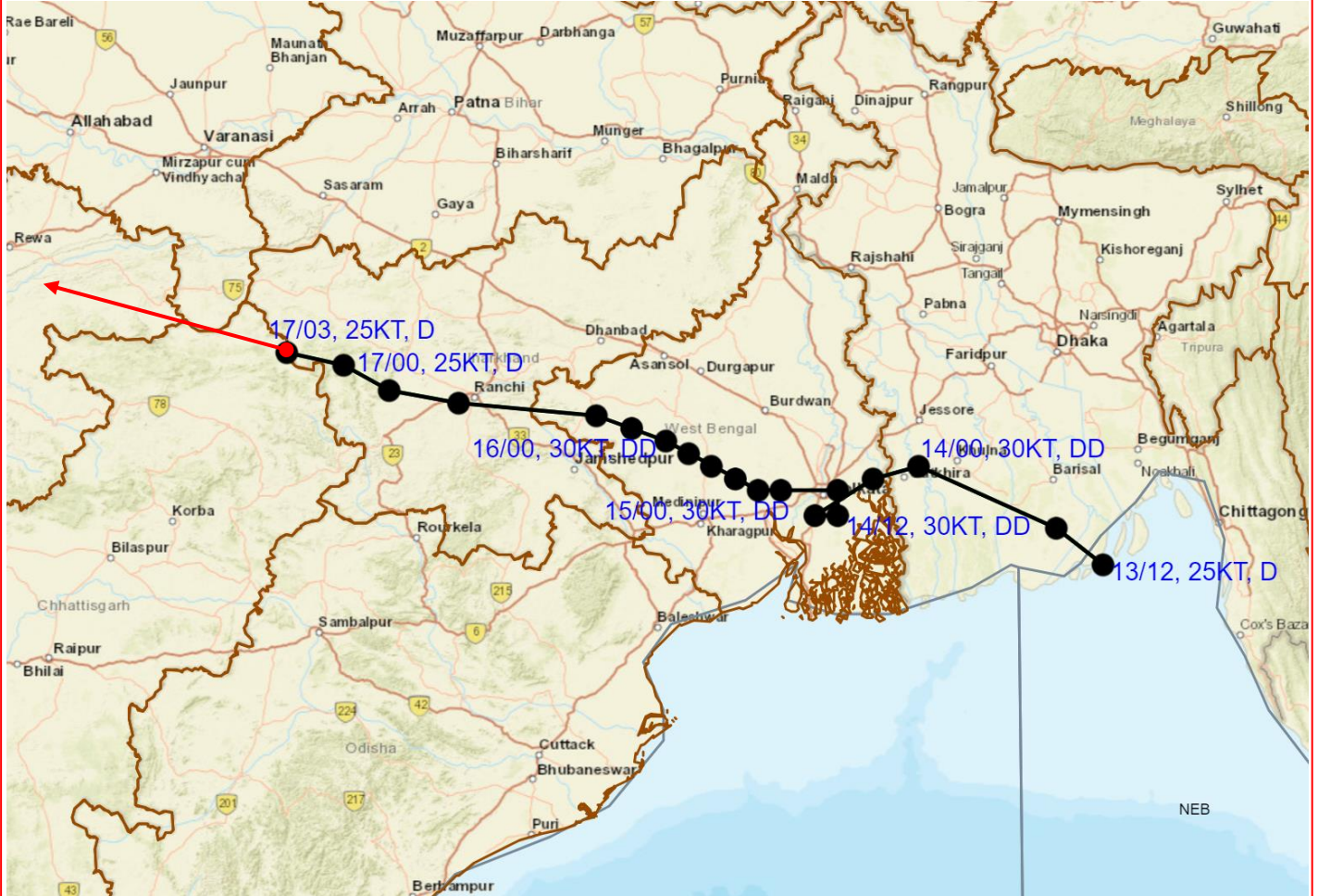
938

IMD, DELHI

Spatial rainfall distribution: Isolated: <25%, A few: 26-50%, Many: 51-75%, Most: 76-100%
Rainfall amount (mm): Heavy rain: 64.5 – 115.5, Very heavy rain: 115.6 – 204.4, Extremely heavy rain: 204.5 or more.



OBSERVED AND FORECAST TRACK OF DEPRESSION OVER NORTHEAST CHHATTISGARH AND ADJOINING JHARKHAND BASED ON 0300 UTC (0830 IST) OF 17TH SEPTEMBER 2024.



DATE/TIME IN UTC

IST=UTC + 0530

L: LOW PRESSURE AREA

WML: WELL MARKED LOW PRESSURE AREA

D: DEPRESSION (17-27 KT)

DD: DEEP DEPRESSION (28-33 KT)

CS: CYCLONIC STORM (34-47 KT)

SCS: SEVERE CYCLONIC STORM (48-63KT)

VSCS: VERY SEVERE CYCLONIC STORM (64-89 KT)

ESCS: EXTREMELY SEVERE CYCLONIC STORM (90-119 KT)

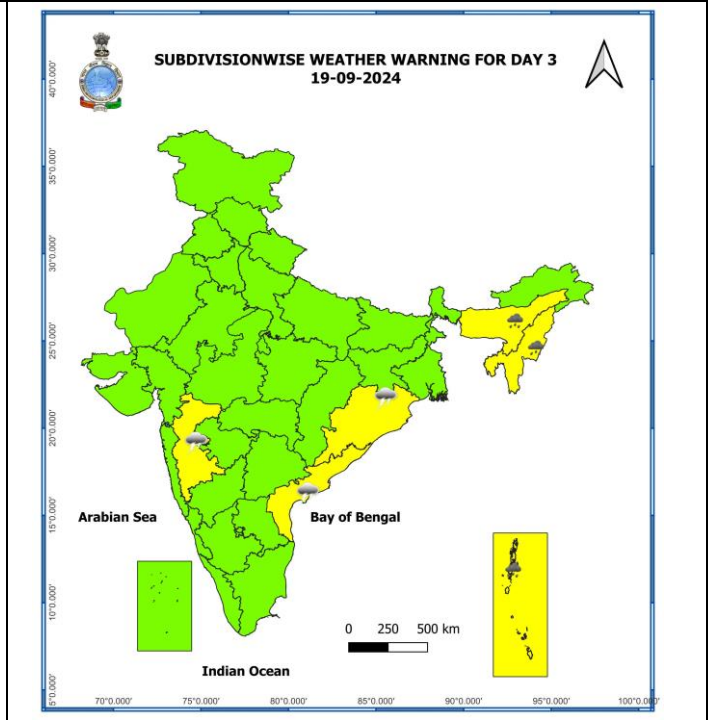
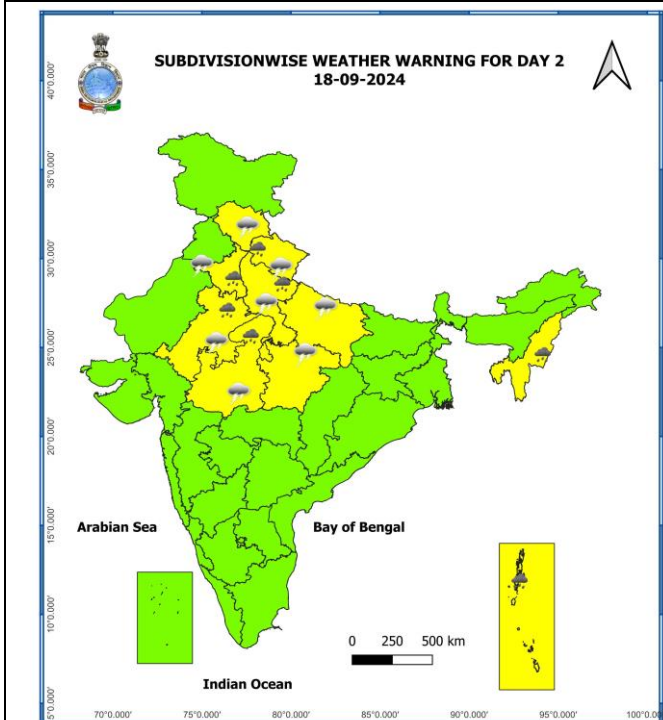
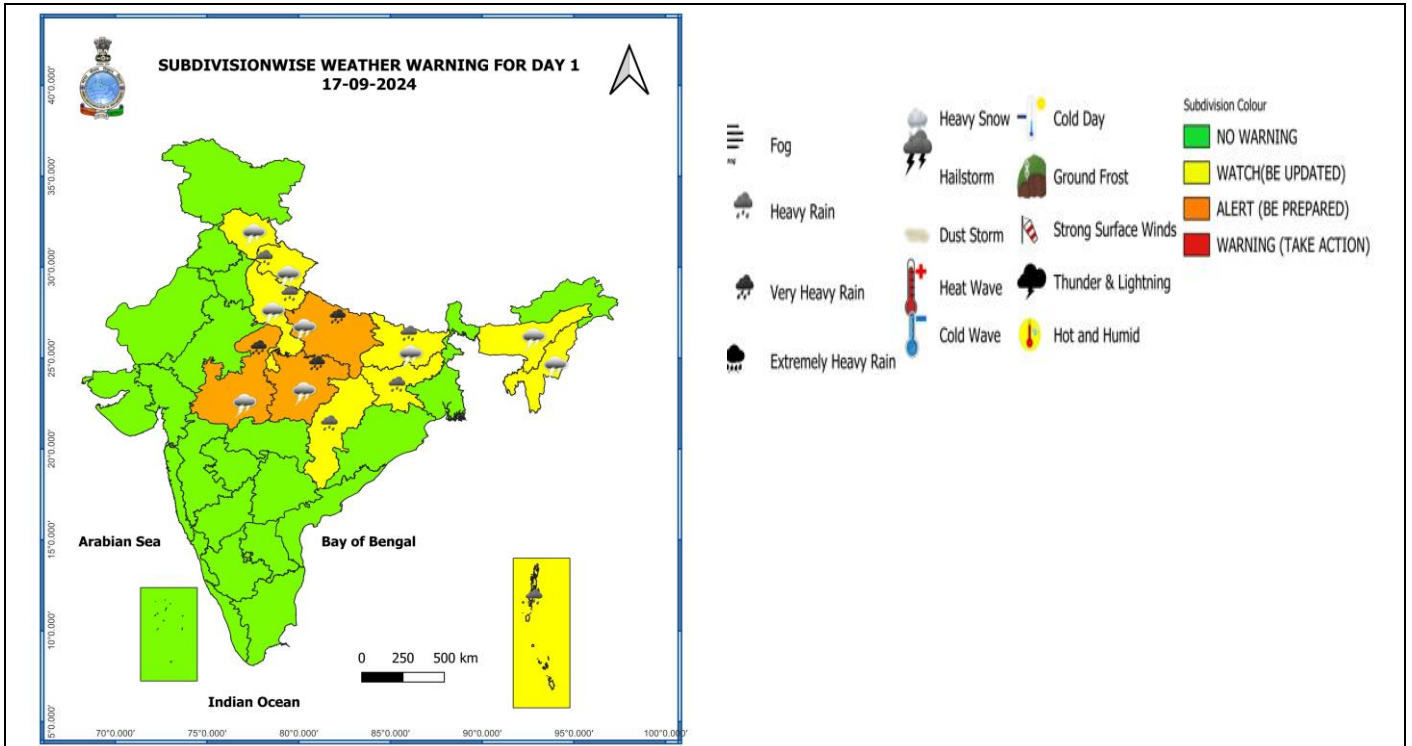
SuCS: SUPER CYCLONIC STORM (≥ 120 KT)

- LESS THAN 34 KT
- 34-47 KT
- ≥ 48 KT
- OBSERVED TRACK
- FORECAST TRACK
- CONE OF UNCERTAINTY

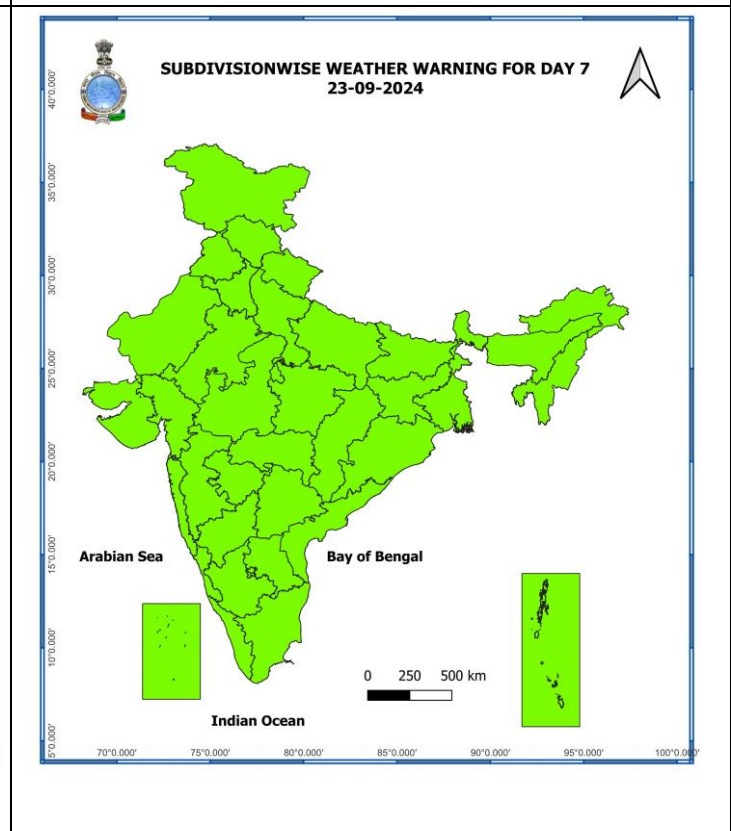
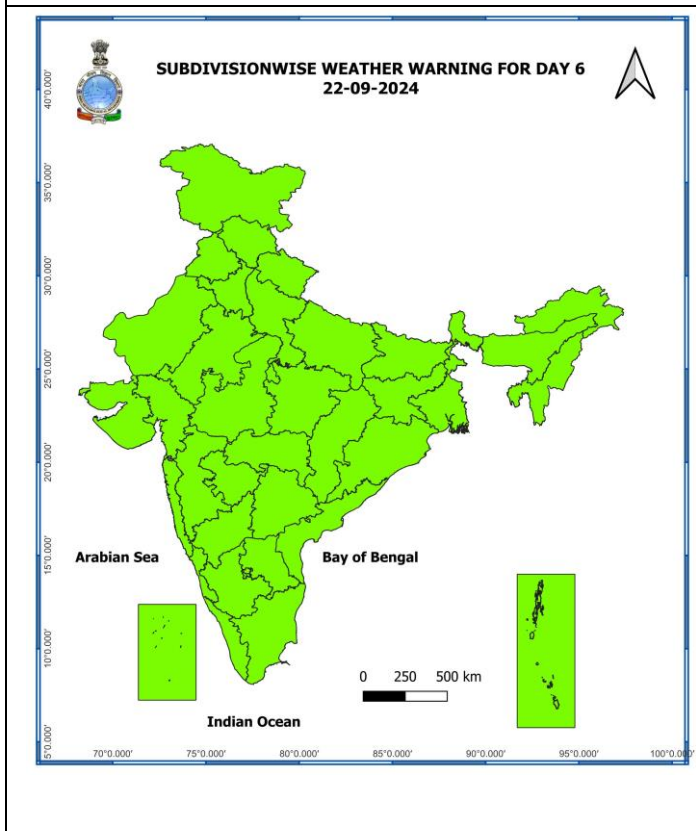
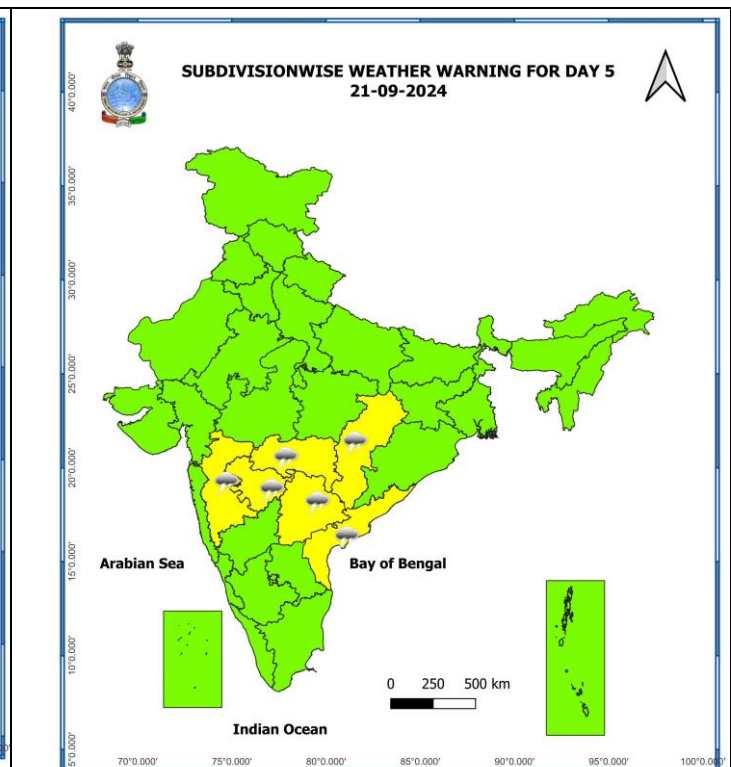
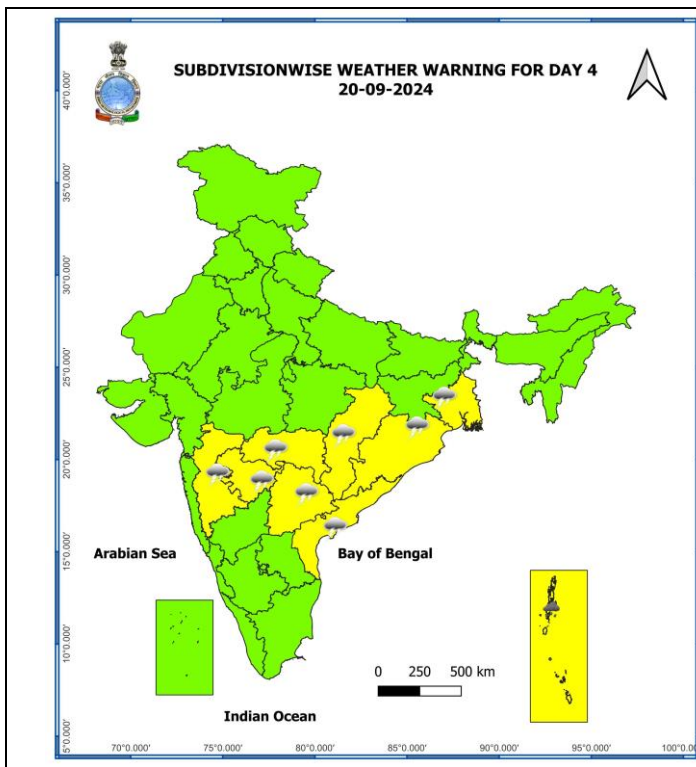
Spatial rainfall distribution: Isolated: <25%, A few: 26-50%, Many: 51-75%, Most: 76-100%

Rainfall amount (mm): Heavy rain: 64.5 – 115.5, Very heavy rain: 115.6 – 204.4, Extremely heavy rain: 204.5 or more.

Weather Warning Graphics



Spatial rainfall distribution: Isolated: <25%, A few: 26-50%, Many: 51-75%, Most: 76-100%
Rainfall amount (mm): Heavy rain: 64.5 – 115.5, Very heavy rain: 115.6 – 204.4, Extremely heavy rain: 204.5 or more.



- Action may be taken based on **ORANGE AND RED COLOUR** warnings.
- Vulnerable regions likely urban and hilly areas action may be initiated for heavy rainfall warning.
- As the lead period increases forecast accuracy decreases.

Spatial rainfall distribution: Isolated: <25%, A few: 26-50%, Many: 51-75%, Most: 76-100%
Rainfall amount (mm): Heavy rain: 64.5 – 115.5, Very heavy rain: 115.6 – 204.4, Extremely heavy rain: 204.5 or more.

Flash Flood Guidance

24 hours Outlook for the Flash Flood Risk (FFR) till 0530 IST of 18-09-2024 :

Low to Moderate flash flood risk likely over few watersheds & neighbourhoods of following Met Sub-divisions during next 24 hours.

East Uttar Pradesh - Chandauli, Mirzapur, Prayagraj and Sonbhadra districts.

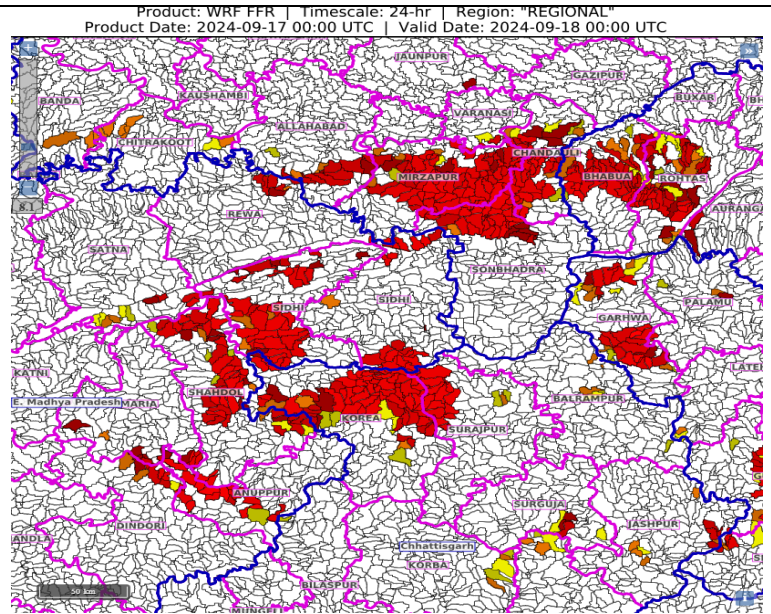
Chhattisgarh - Korea and Surajpur districts.

East Madhya Pradesh - Anuppur, Dindori, Rewa, Satna, Shahdol, Sidhi, Singrauli and Umaria districts.

Bihar - Bhabua and Rohtas districts.

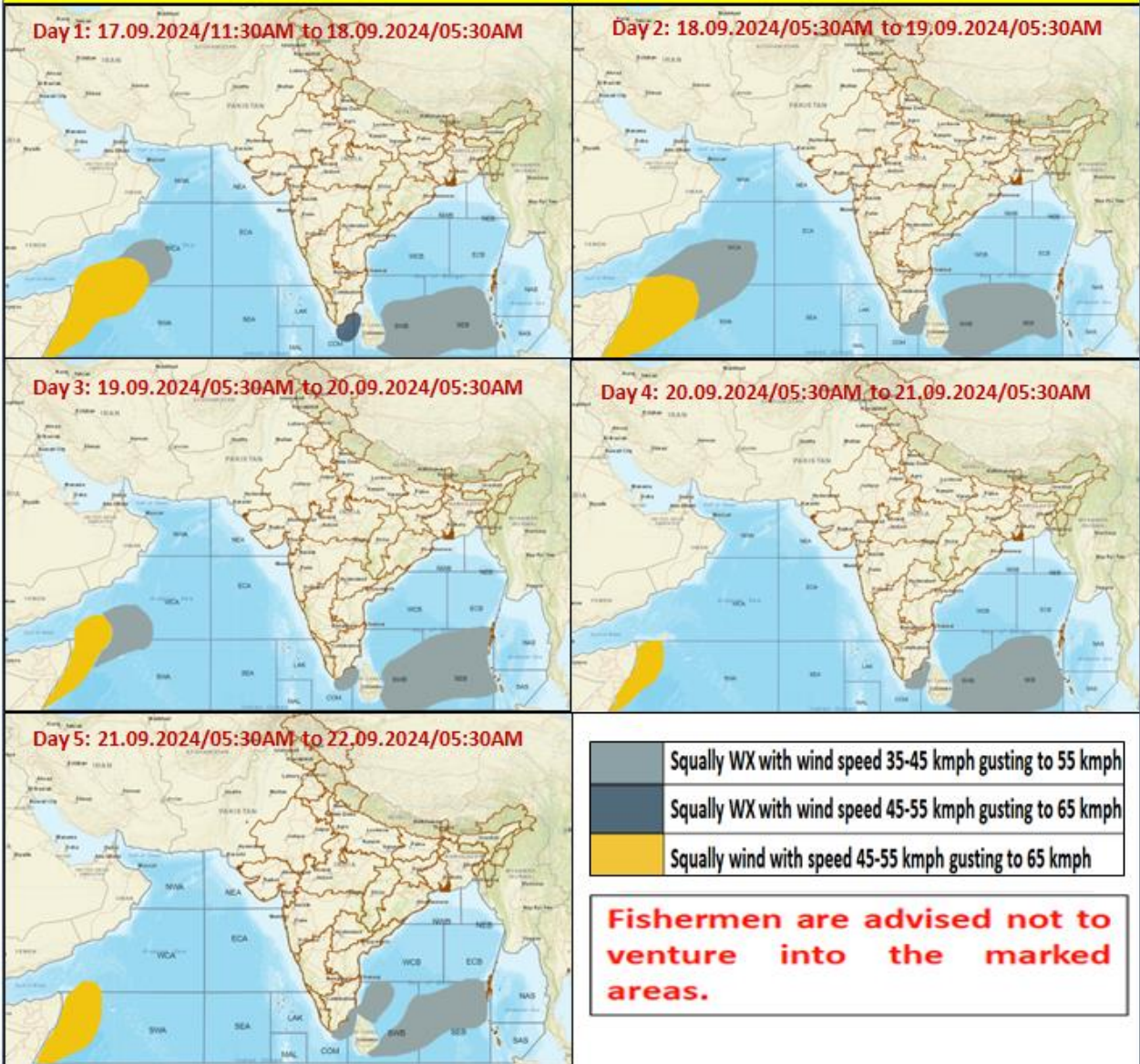
Jharkhand - Garhwa district.

Surface runoff/ Inundation may occur at some fully saturated soils & low-lying areas over Area of Concern (AoC) as shown in map due to expected rainfall occurrence in next 24 hours.



Spatial rainfall distribution: Isolated: <25%, A few: 26-50%, Many: 51-75%, Most: 76-100%
Rainfall amount (mm): Heavy rain: 64.5 – 115.5, Very heavy rain: 115.6 – 204.4, Extremely heavy rain: 204.5 or more.

Fishermen Warning Graphics



Spatial rainfall distribution: Isolated: <25%, A few: 26-50%, Many: 51-75%, Most: 76-100%

Rainfall amount (mm): Heavy rain: 64.5 – 115.5, Very heavy rain: 115.6 – 204.4, Extremely heavy rain: 204.5 or more.

24 hours accumulated realised rainfall during 0830 hours IST of yesterday, the 16th September to 0830 hours IST of today, the 17th September

❖ **Chhattisgarh:** Kusmi (dist Balrampur) 15, Ramchandrapur (dist Balrampur) 14, Samari (dist Balrampur) 12, Biharpur (dist Surajpur) 12, Ramanujganj (dist Balrampur) 11, Odagi (dist Surajpur) 9, Sonhat (dist Koriya) 9, Chando (dist Balrampur) 9, Pondi Bachra (dist Koriya) 8, Balrampur (dist Balrampur) 8, Rajpur (dist Balrampur) 7, Bhaiyathan (dist Surajpur) 7, Manora (dist Jashpur) 7, Pasaan (dist Korba) 7,

❖ **East Madhya Pradesh:** Churhat (dist Sidhi) 14, Panagar (dist Jabalpur) 12, Bilhari (dist Katni) 10, Jabalpur-aws (dist Jabalpur) 10, Bargi (dist Jabalpur) 10, Mada (dist Singrauli) 9, Bijadandi (dist Mandla) 7, Sarai (dist Singrauli) 7, Nowrozabad (dist Umaria) 7, Chitrangi (dist Singrauli) 7,