



India Meteorological Department  
(Ministry of Earth Sciences)

NATIONAL BULLETIN NO.25 (BOB/01/2024)

TIME OF ISSUE: 2100 HOURS IST DATED: 27.05.2024  
FROM: INDIA METEOROLOGICAL DEPARTMENT (FAX NO. 24643965/24699216/24623220)

TO: CONTROL ROOM, NDM, MINISTRY OF HOME AFFAIRS (FAX.NO. 23093750)  
CONTROL ROOM NDMA (FAX.NO. 26701729)  
CABINET SECRETARIAT (FAX.NO.23012284, 23018638)  
PS TO HON'BLE MINISTER FOR S & T AND EARTH SCIENCES (FAX NO.23316745)  
SECRETARY, MOES (FAX NO. 24629777)  
H.Q. (INTEGRATED DEFENCE STAFF AND CDS) (FAX NO. 23005137/23005147)  
DIRECTOR GENERAL, DOORDARSHAN (23385843)  
DIRECTOR GENERAL, AIR (23421105, 23421219)  
PIB MOES (FAX NO. 23389042)  
UNI (FAX NO. 23355841)  
D.G. NATIONAL DISASTER RESPONSE FORCE (NDRF) (FAX NO. 26105912, 2436 3260)  
DIRECTOR, PUNCTUALITY, INDIAN RAILWAYS (FAX NO. 23388503)  
CHIEF SECRETARY, ANDAMAN & NICOBAR ISLANDS (FAX NO. 03192- 232656)  
CHIEF SECRETARY, GOVT. WEST BENGAL (FAX NO. 033-22144328)  
CHIEF SECRETARY, GOVT. OF ODISHA (FAX NO. 0674 -2536660)  
CHIEF SECRETARY, GOVT. OF ANDHRA PRADESH (FAX NO. 0863-2441029, 08645-246600)  
CHIEF SECRETARY, GOVT. OF TAMIL NADU (FAX NO. 044-25672304)  
CHIEF SECRETARY, GOVT. OF PUDUCHERRY (FAX NO. 0413-2337575, 2334145)  
CHIEF SECRETARY, GOVT. OF TRIPURA (FAX NO. 0381-2414013, 2413200)  
CHIEF SECRETARY, GOVT. OF MIZORAM (FAX NO. 0389-2322745, 2320588)  
CHIEF SECRETARY, GOVT. OF MANIPUR (FAX NO. 0385-2452629)  
CHIEF SECRETARY, GOVT. OF NAGALAND (FAX NO. 0370-2270057)  
CHIEF SECRETARY, GOVT. OF ASSAM (FAX NO. 0361-2260900)  
CHIEF SECRETARY, GOVT. OF MEGHALAYA (FAX NO. 0364-2225978)

**Sub: Cyclonic Storm "Remal" (pronounced as "Re-Mal") over Bangladesh**

The Cyclonic Storm "Remal" (pronounced as "Re-Mal") over Bangladesh and adjoining West Bengal moved northeastwards, with a speed of 14 kmph during past 06 hours and lay centered at 1730 hrs IST of today, the 27<sup>th</sup> May, 2024 over Bangladesh, near **latitude 23.6°N** and **longitude 89.7°E** about 120 km north of Mongla (Bangladesh), 190 km east-northeast of Kolkata (West Bengal) and 70 km west-southwest of Dhaka (Bangladesh)

The system is likely to move nearly northeastwards, and gradually weaken further into a Deep Depression during next 6 hours.

Forecast track and intensity are given in the following table:

Date/Time (IST)	Position (Lat. °N/ long. °E)	Maximum sustained surface wind speed (Kmph)	Category of cyclonic disturbance
27.05.24/1730	23.6/89.7	60-70 gusting to 80	Cyclonic Storm
27.05.24/2330	24.0/90.4	50-60 gusting to 70	Deep Depression
28.05.24/0530	24.4/91.1	40-50 gusting to 60	Depression
28.05.24/1130	24.8/91.8	25-35 gusting to 45	Well Marked Low Pressure Area

**Warnings (Graphics Attached):**

**Heavy Rainfall Warning:**

- (a) **West Bengal:** Light to moderate rainfall at most places with **heavy rainfall** at isolated places is likely over coastal and eastern districts of Gangetic West Bengal adjacent to Bangladesh on 27<sup>th</sup> May.  
Light to moderate rainfall at most places with **heavy to very heavy rainfall** at isolated places likely over eastern districts of Sub-Himalayan West Bengal on 27<sup>th</sup> and 28<sup>th</sup> May.
- (b) **Northeastern States:** Light to moderate rainfall at most places with **heavy to very heavy rainfall** at a few places is likely over Assam, Meghalaya, Arunachal Pradesh,

Nagaland, Mizoram, Manipur & Tripura on 27<sup>th</sup> & 28<sup>th</sup> May. Isolated **extremely heavy rainfall** ( $\geq 20$  cm) is also likely over Assam, Meghalaya, Mizoram & Tripura on 27<sup>th</sup>, and Arunachal Pradesh on 28<sup>th</sup> May.

### **Wind Warning:**

#### **(a) Bay of Bengal**

❖ **Gale wind speed reaching 60-70 kmph gusting to 80 kmph** is prevailing over North Bay of Bengal. It is likely to decrease becoming squally wind speed reaching 50-60 kmph gusting to 70 kmph by midnight of 27<sup>th</sup> May.

#### **(b) Along & off Bangladesh and West Bengal coasts**

❖ **Gale wind speed reaching 60-70 kmph gusting to 80 kmph** will continue to prevail along & off Bangladesh and adjoining West Bengal coasts during next 3 hours. It is likely to decrease becoming squally wind reaching 45-55 kmph gusting to 65 kmph by midnight of 27<sup>th</sup> May and decrease gradually thereafter.

❖ **Squally wind speed reaching 50-60 kmph gusting to 70 kmph** will continue to prevail over Kolkata & Nadia during next 3 hours. The wind speed would decrease over these regions gradually thereafter.

#### **(c) Northeastern States**

**Squally wind speed reaching 50-60 kmph gusting to 70 kmph** is likely over South Assam and Meghalaya, Tripura and **40-50 kmph gusting to 60 kmph** is likely over & Mizoram, Manipur and remaining parts of Assam on 27<sup>th</sup> May. It would reduce to 40-50 gusting to 60 kmph over Assam & Meghalaya till noon of 28<sup>th</sup> May.

### **Sea condition warning:**

#### **(a) North Bay of Bengal**

High Sea condition is likely over North Bay of Bengal till night and gradually improve becoming very rough to rough thereafter till midnight of 27<sup>th</sup> May. It would improve thereafter.

#### **(b) Along & off Bangladesh and West Bengal coasts**

High to very rough sea condition is likely along & off Bangladesh and West Bengal till 27<sup>th</sup> May midnight. It would improve thereafter.

### **Damage Expected over West Bengal (South & North 24 Parganas, Kolkata, Nadia, Murshidabad districts) and Northeastern States (Assam, Meghalaya, Manipur, Tripura, Mizoram)**

- Damage to vulnerable structures and thatched houses/ huts.
- Unattached metal sheets may fly.
- Breaking of tree branches, uprooting of small trees. Damage to banana and papaya trees.
- Partial damage to power and communication lines due to breaking of branches and uprooting of small trees.
- Damage to Kutcha and minor damage to Pucca roads due to heavy rain.
- Damage to paddy crops, horticultural crops and orchards.
- Inundation of low-lying areas and localized flooding
- Occasional reduction in visibility due to heavy rainfall.
- Disruption of traffic due to water logging and squally winds

### **Action Suggested for Damage Expected over West Bengal (South & North 24 Parganas, Kolkata, Nadia, Murshidabad districts) and Northeastern States (Assam, Meghalaya, Manipur, Tripura, Mizoram) on 27<sup>th</sup> May:**

- People in vulnerable areas to move to safer places.
- People in affected areas to remain indoors.
- Total suspension of fishing operations on 27<sup>th</sup> May.
- Surface transport and shipping Onshore & Offshore operations over North Bay of Bengal need to be regulated till afternoon of 27<sup>th</sup> May
- Avoid going to areas that face the water logging problems often.

**Fishermen Warning (graphics attached):**

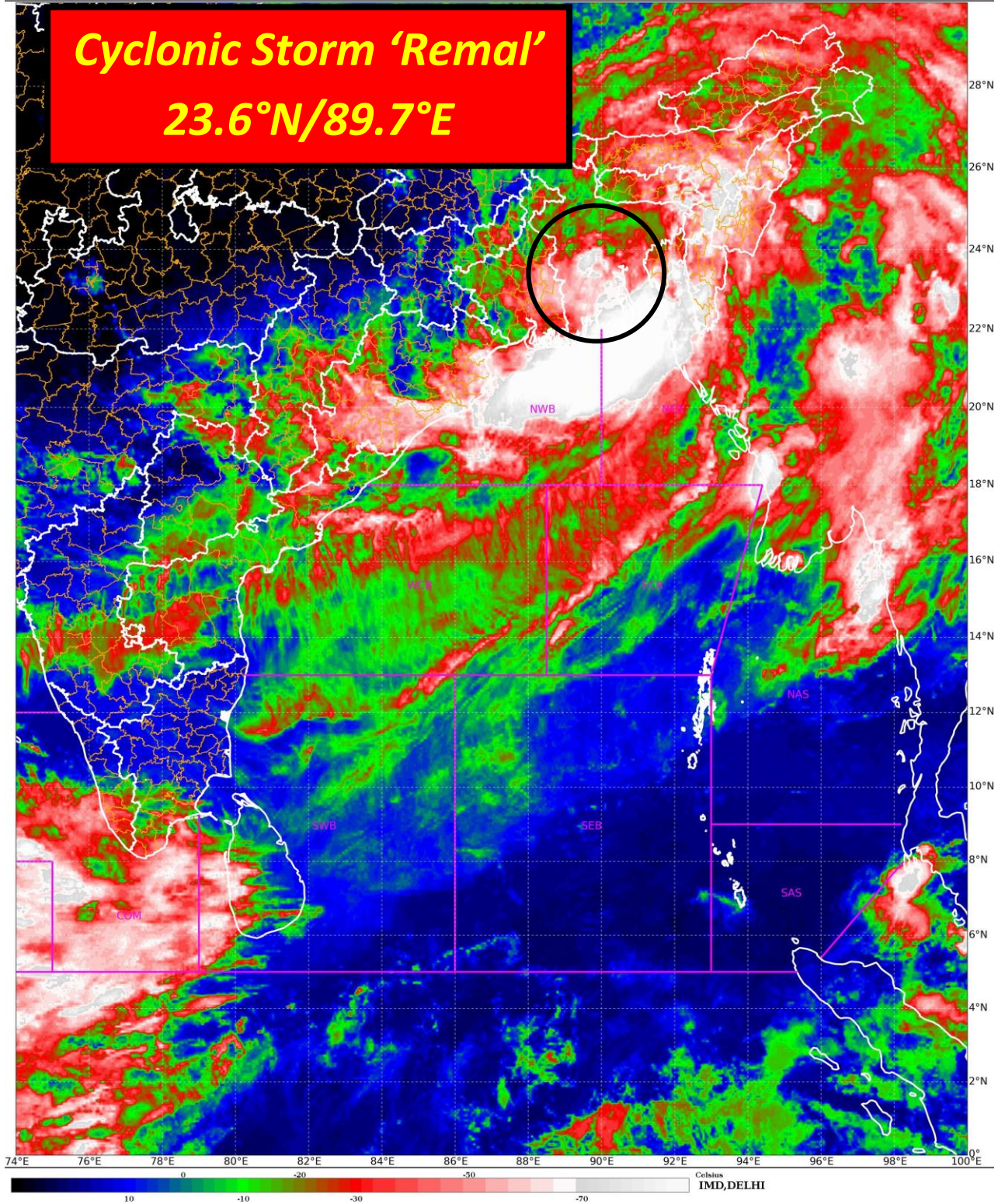
Fishermen are advised not to venture into North Bay of Bengal along and off West Bengal and Bangladesh coasts on 27<sup>th</sup> May.

**The system is under continuous surveillance and the next message will be issued at 2330 hours IST of today, the 27<sup>th</sup> May, 2024.**

**(Ananda Kumar Das)**

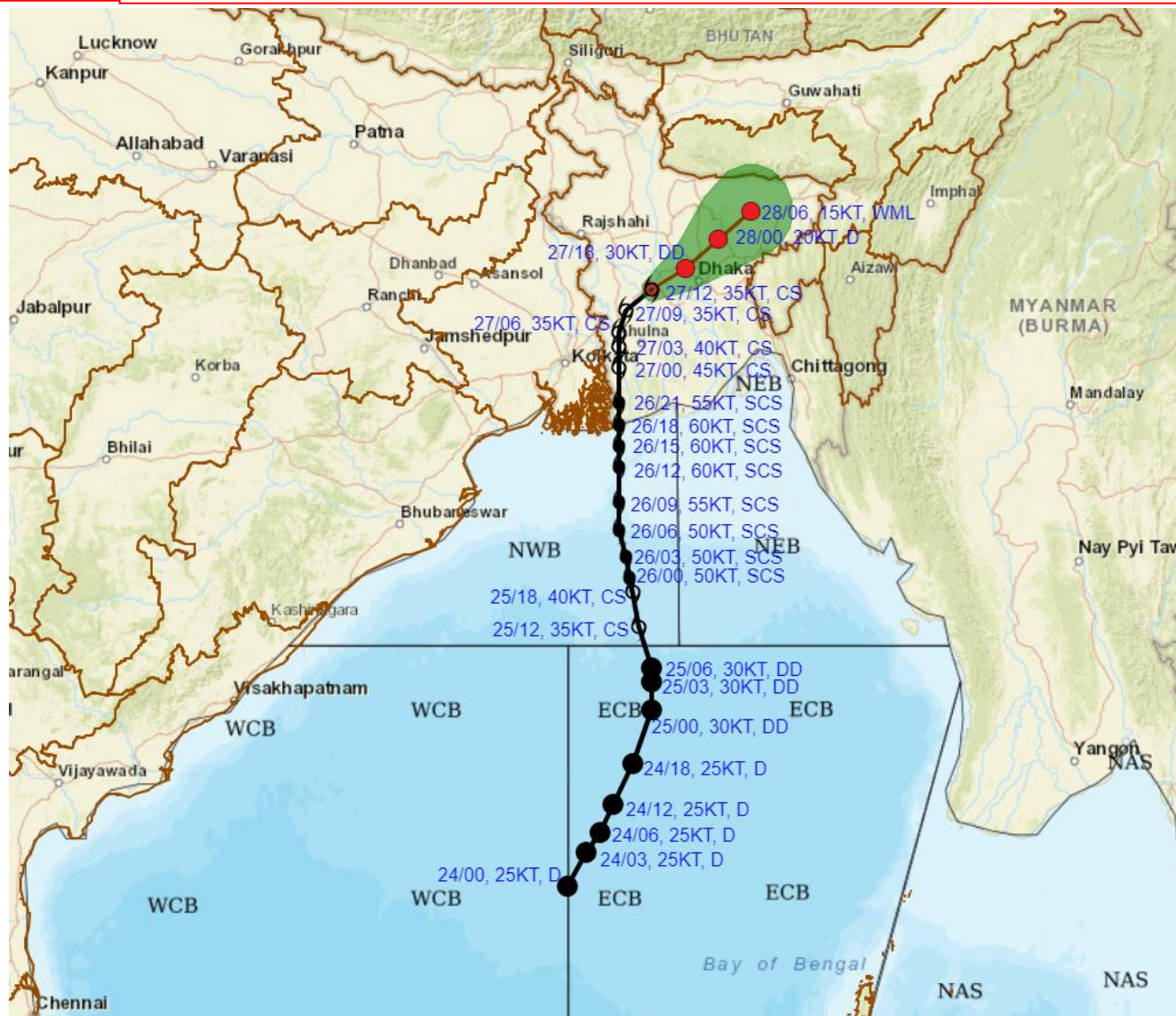
**Scientist F, Cyclone Warning Division, New Delhi**

*Copy to: ACWC Kolkata/ ACWC Chennai/ CWC Bhubaneswar/CWC Visakhapatnam/MO  
Port Blair/RMC Guwahati*





**FORECAST TRACK ALONGWITH CONE OF UNCERTAINTY IN ASSOCIATION WITH CYCLONIC STORM 'REMAL' OVER BANGLADESH BASED ON 1200 UTC (1730 IST) OF 27<sup>TH</sup> MAY 2024.**



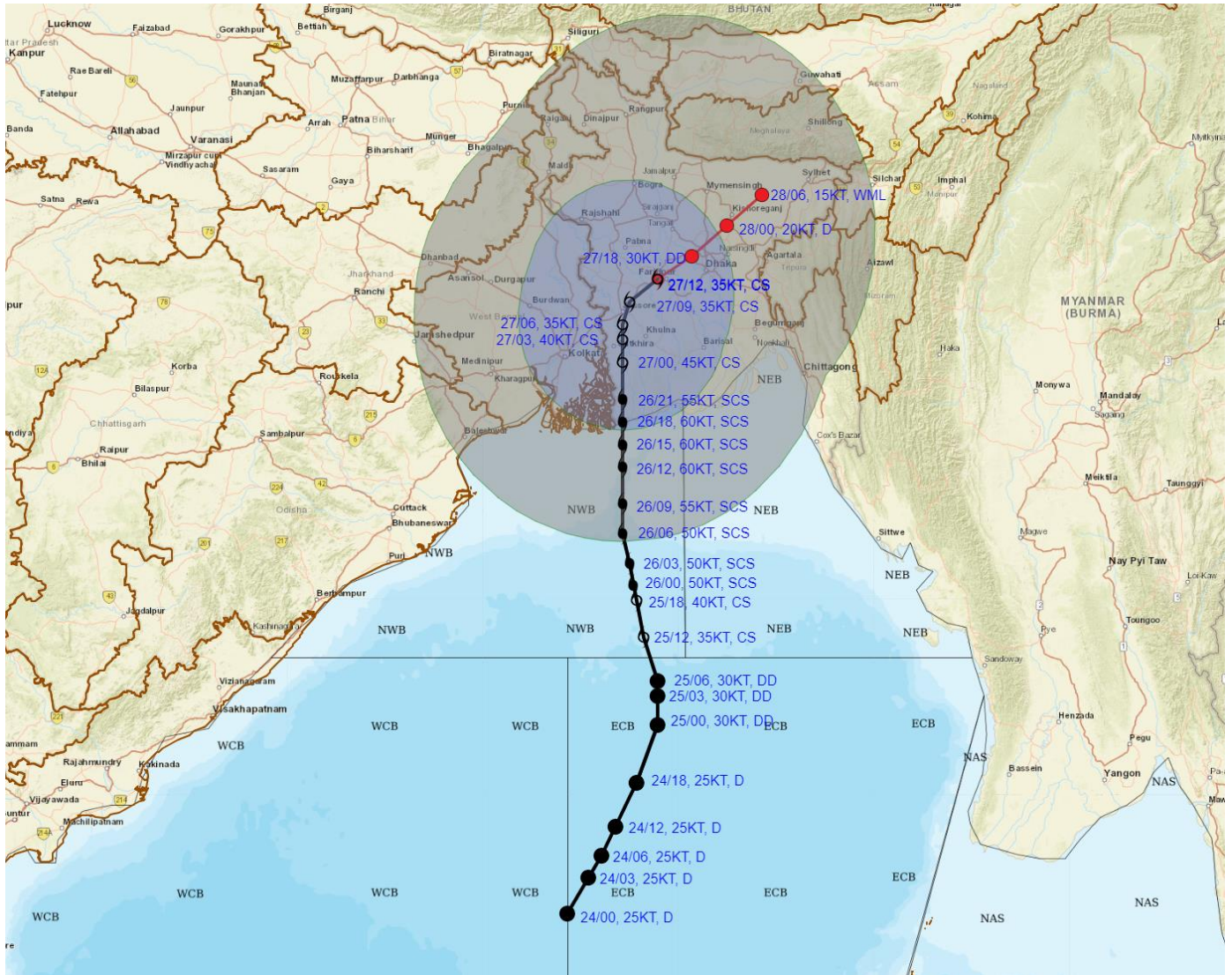
DATE/TIME IN UTC  
 IST=UTC + 0530  
 L: LOW PRESSURE AREA  
 WML: WELL MARKED LOW PRESSURE AREA  
 D: DEPRESSION (17-27 KT)  
 DD: DEEP DEPRESSION (28-33 KT)  
 CS: CYCLONIC STORM (34-47 KT)  
 SCS: SEVERE CYCLONIC STORM (48-63KT)  
 VSCS: VERY SEVERE CYCLONIC STORM (64-89 KT)  
 ESCS: EXTREMELY SEVERE CYCLONIC STORM (90-119 KT)  
 SuCS: SUPER CYCLONIC STORM ( $\geq$  120 KT)

- LESS THAN 34 KT
- 34-47 KT
- $\geq$  48 KT
- OBSERVED TRACK
- FORECAST TRACK
- CONE OF UNCERTAINTY

Forecast	DISTANCE (KM) AND DIRECTION FROM STATIONS			
	Date and Time (UTC)	Kolkata	DHAKA	Mongla
	27.05.24/1200	190, ENE	70, WSW	120, N
	27.05.24/1800	370, ENE	30, N	190, NNE
	28.05.24/0000	450, ENE	110, NE	260, NE
	28.05.24/0600	530, ENE	190, NE	340, NE



**FORECAST TRACK ALONGWITH QUADRANT WIND DISTRIBUTION IN ASSOCIATION WITH CYCLONIC STORM 'REMAL' OVER BANGLADESH BASED ON 1200 UTC (1730 IST) OF 27TH MAY 2024.**



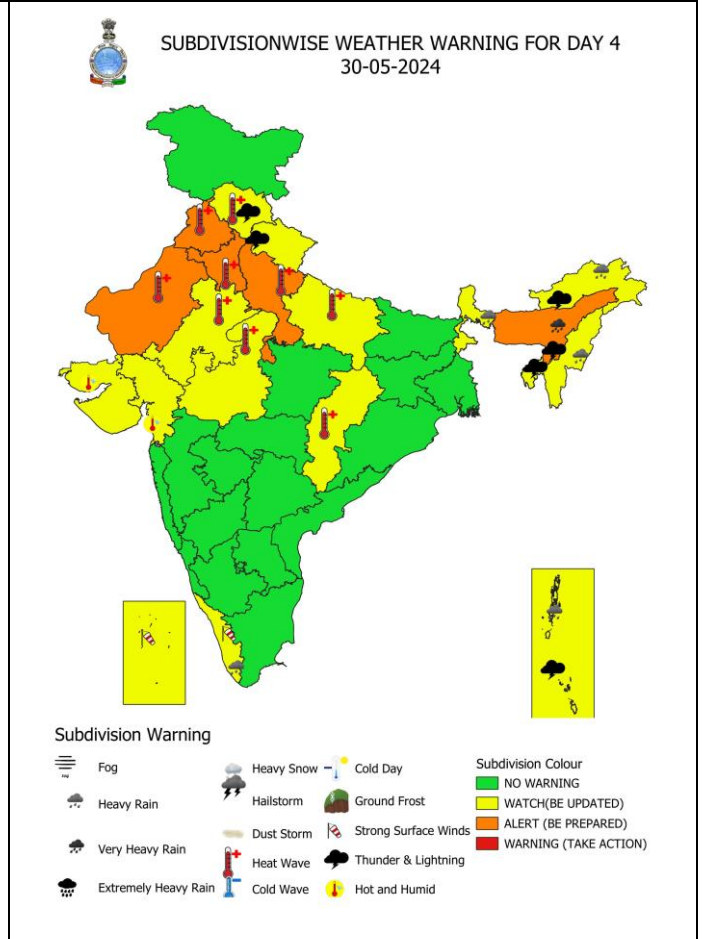
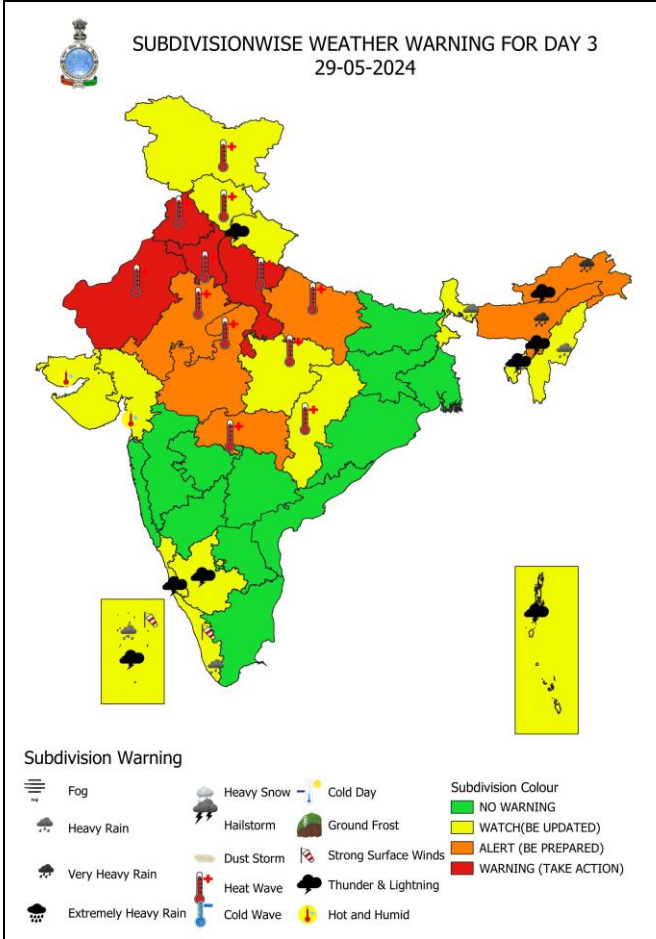
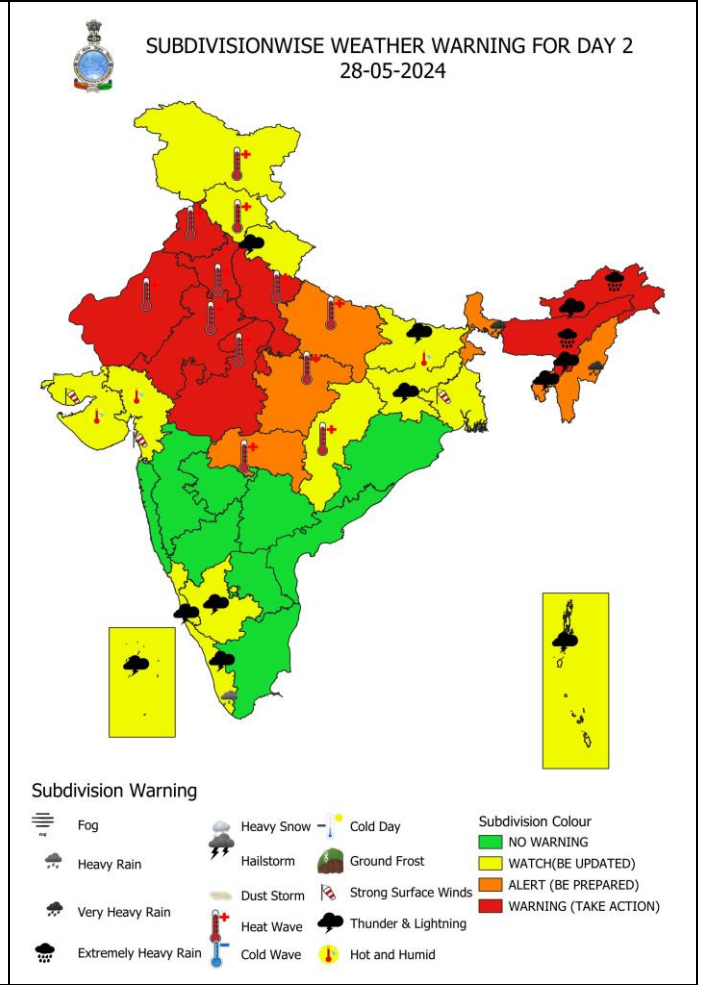
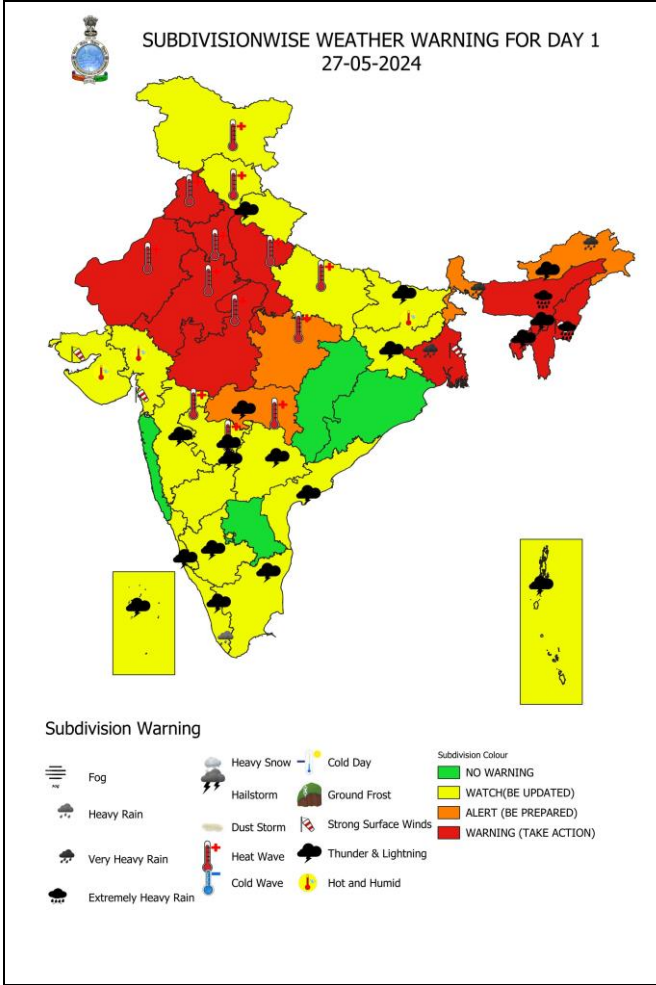
DATE/TIME IN UTC  
 IST=UTC + 0530  
 L: LOW PRESSURE AREA  
 WML: WELL MARKED LOW PRESSURE AREA  
 D: DEPRESSION (17-27 KT)  
 DD: DEEP DEPRESSION (28-33 KT)  
 CS: CYCLONIC STORM (34-47 KT)  
 SCS: SEVERE CYCLONIC STORM (48-63KT)  
 VSCS: VERY SEVERE CYCLONIC STORM (64-89 KT)  
 ESCS: EXTREMELY SEVERE CYCLONIC STORM (90-119 KT)  
 SuCS: SUPER CYCLONIC STORM (≥ 120 KT)

● LESS THAN 34 KT  
 ○ 34-47 KT  
 ○ ≥ 48 KT  
 — OBSERVED TRACK  
 — FORECAST TRACK  
 ○ CONE OF UNCERTAINTY  
 AREA OF MAXIMUM SUSTAINED WIND SPEED:  
 ■ 28-33 KT (52-61 KMPH)  
 ■ 34-49 KT (62-91 KMPH)  
 ■ 50-63 KT (92-117 KMPH)  
 ■ ≥ 64 KT (≥118 KMPH)

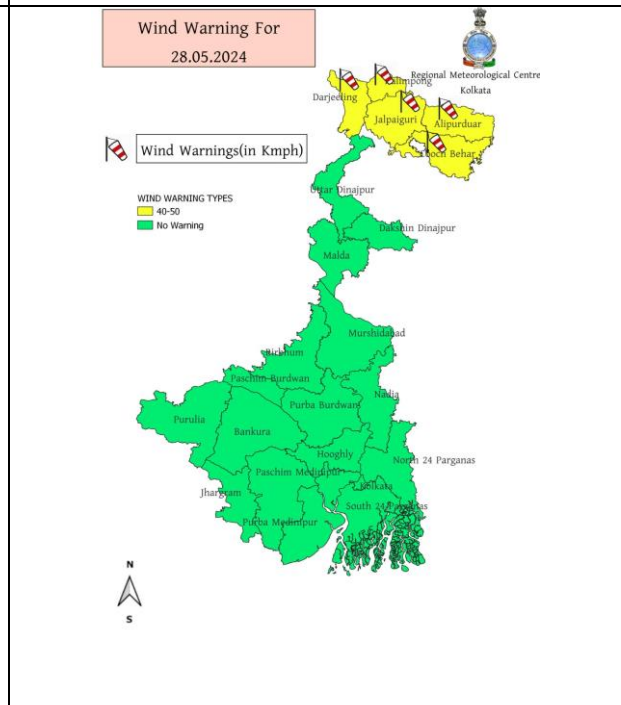
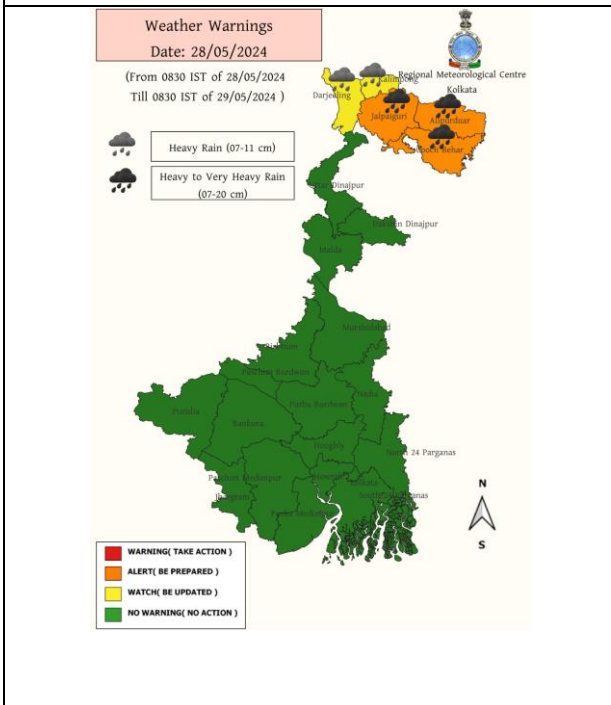
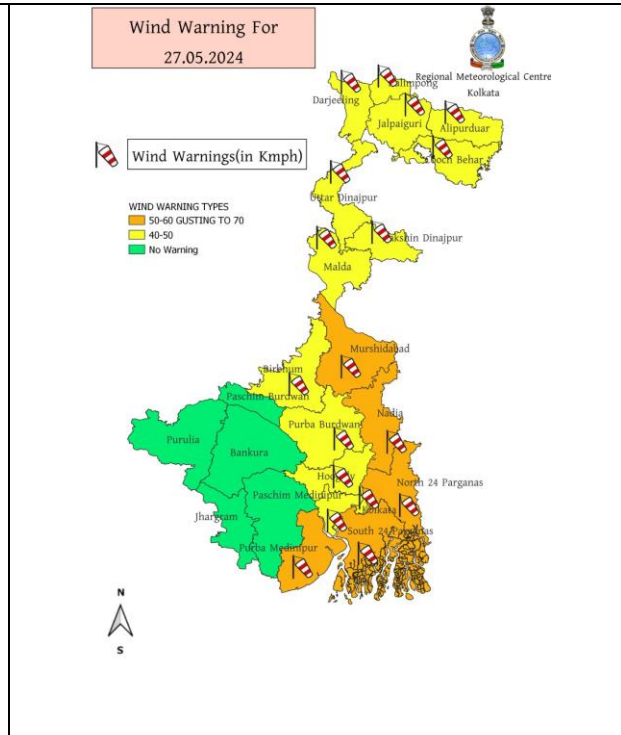
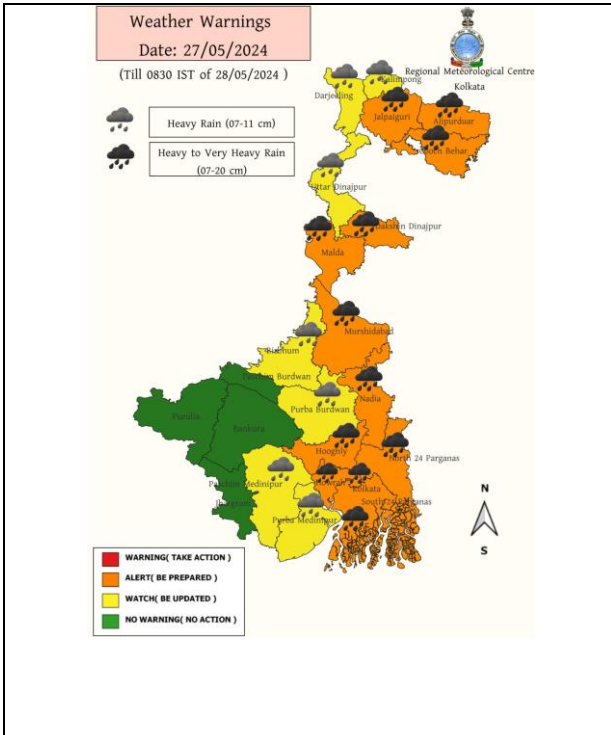
**IMPACT OVER THE SEA**

MSW (knot/kmph)	Impact	Action
28-33 (52-61)	Very rough seas	Total suspension of fishing operations
34-49 (62-91)	High to very high seas	Total suspension of fishing operations
50-63 (92-117)	Very high seas	Total suspension of fishing operations
≥ 64 (≥118)	Phenomenal	Total suspension of fishing operations

# All India Warning Graphics



# Warning Graphics of West Bengal



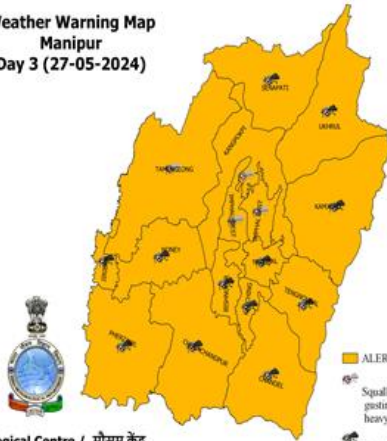


# Warning Graphics of North-eastern States of India

## MANIPUR

Weather Warning Map  
Manipur  
Day 3 (27-05-2024)

Issue Date:  
25-05-2024



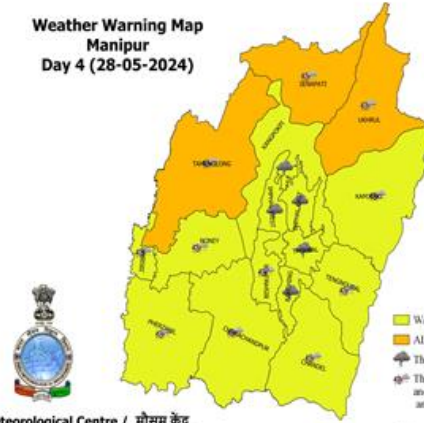
**Warning**

- ALERT (BE PREPARED)
- Squally wind with wind speed 40 to 50 kmph gusting to 60 kmph and heavy rain is very likely at isolated places
- Squally wind with wind speed 40 to 50 kmph gusting to 60 kmph and very heavy rain is very likely at isolated places

Meteorological Centre / मौसम केंद्र  
Imphal – 795140 / इम्फाल- 795140

Weather Warning Map  
Manipur  
Day 4 (28-05-2024)

Issue Date:  
25-05-2024



**Warning**

- WATCH (BE UPDATED)
- ALERT (BE PREPARED)
- Thunder
- Thunderstorm with lightning and gusty with wind speed 50 to 60 kmph and heavy rain very likely at isolated places.
- Squally wind with wind speed 40 to 50 kmph gusting to 60 kmph and heavy rain is very likely at isolated places

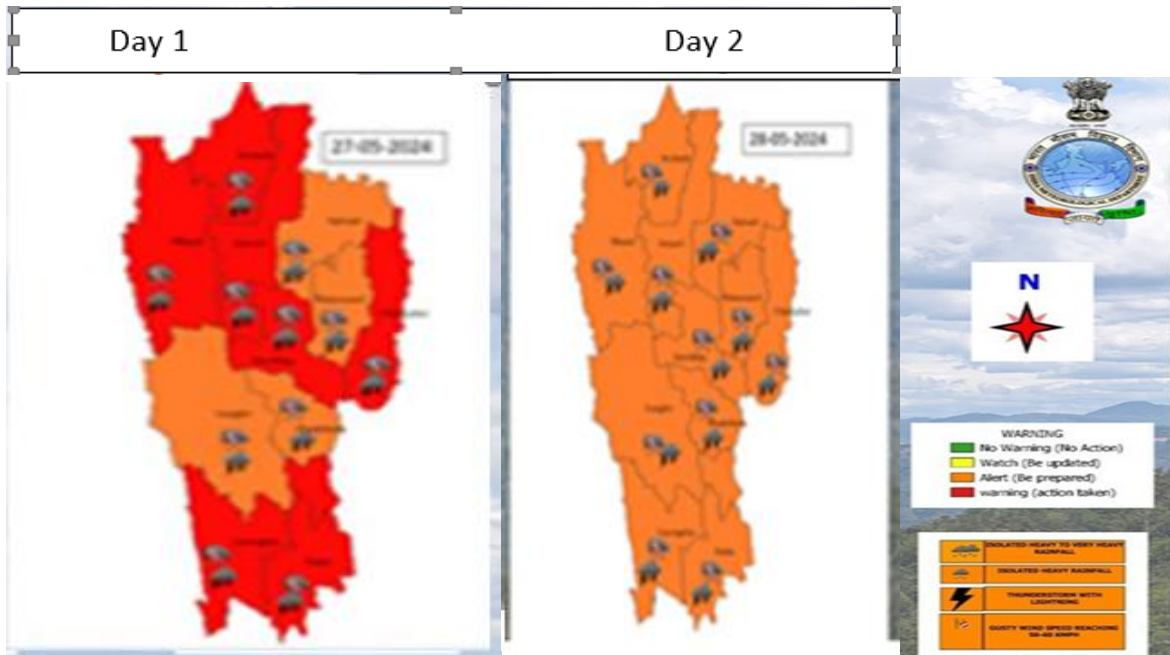
Meteorological Centre / मौसम केंद्र  
Imphal – 795140 / इम्फाल- 795140

Issue Date:

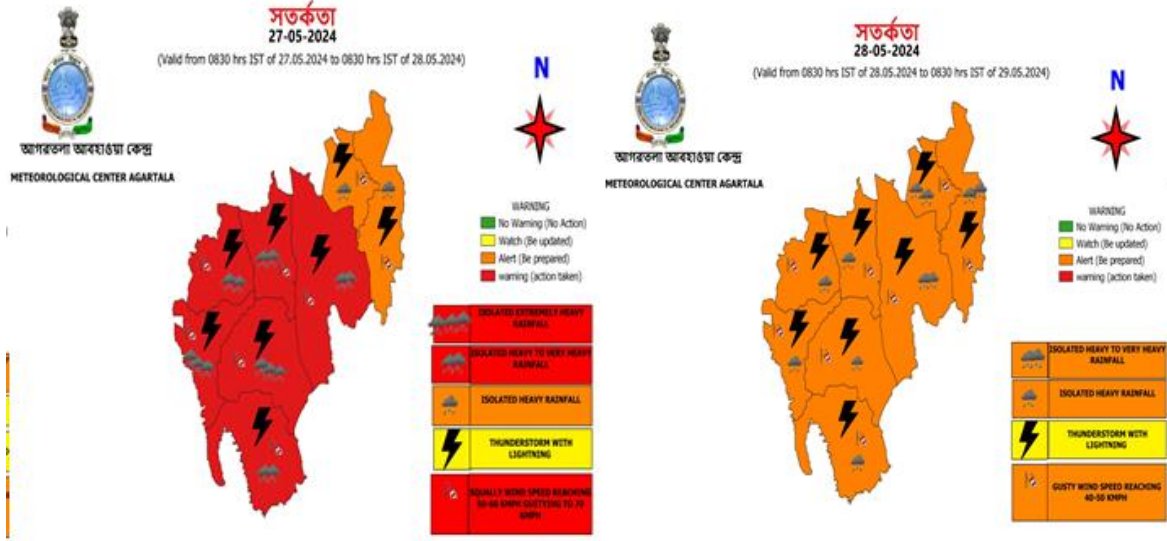
## MIZORAM

Day 1

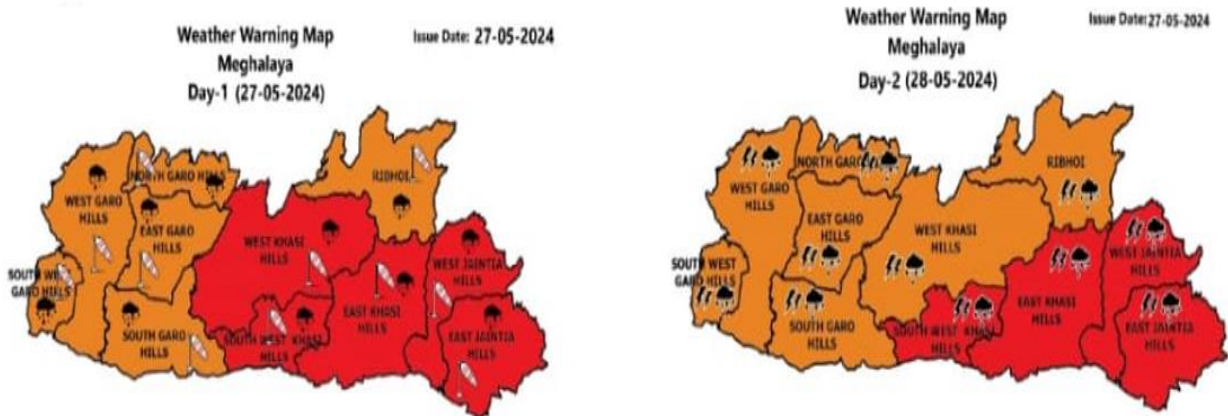
Day 2



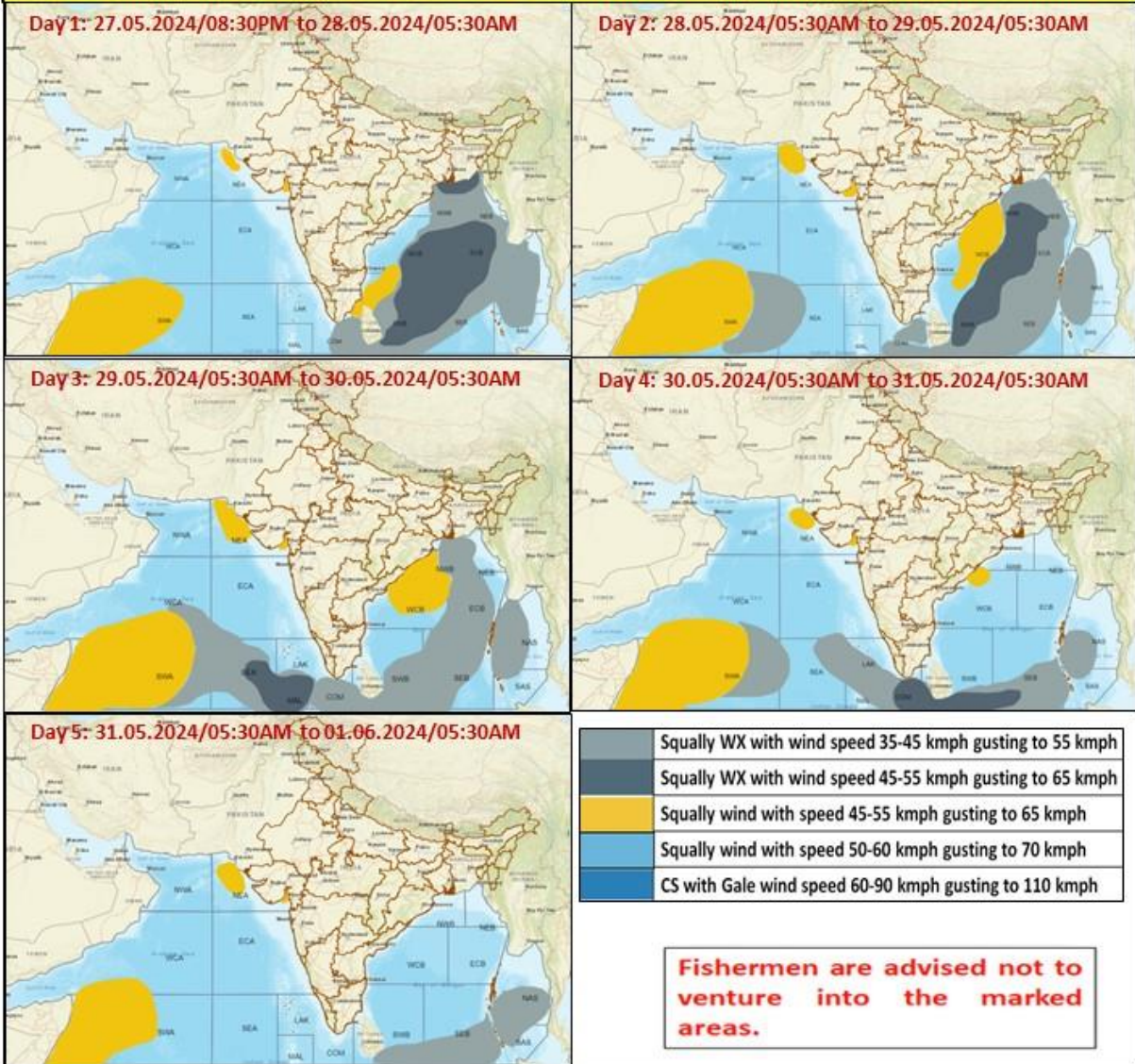
# TRIPURA



# MEGHALAYA



### Fishermen Warning Graphics

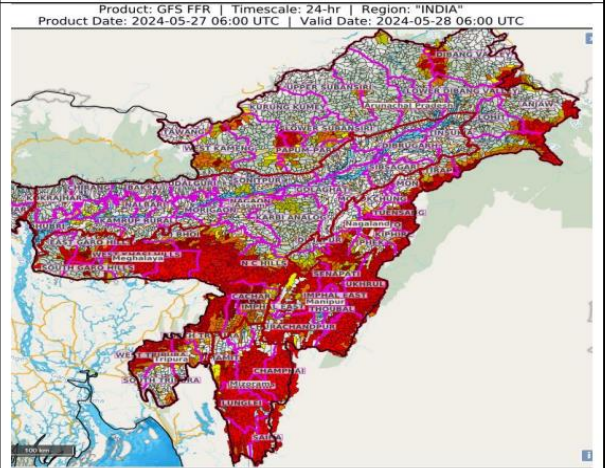


# Flash Flood Guidance for Northeastern States

**24 hours Outlook for the Flash Flood Risk (FFR) till 1130 IST of 28-05-2024 :**

**Moderate flash flood risk** likely over few watersheds & neighbourhoods of **Arunachal Pradesh, Assam & Meghalaya** and NMMT Met Sub-divisions during next 24 hours.

Surface runoff/ Inundation may occur on low lying areas due to persistent rainfall under the influence of impending Cyclonic Storm "Remal" in next 24 hours.



Flash Flood Threat	Flash Flood Risk
<span style="display: inline-block; width: 20px; height: 10px; background-color: red; margin-right: 5px;"></span> <b>High Threat (Take Action)</b>	<span style="display: inline-block; width: 20px; height: 10px; background-color: red; margin-right: 5px;"></span> <b>High Risk (Take Action)</b>
<span style="display: inline-block; width: 20px; height: 10px; background-color: orange; margin-right: 5px;"></span> <b>Moderate threat (Be Prepared)</b>	<span style="display: inline-block; width: 20px; height: 10px; background-color: orange; margin-right: 5px;"></span> <b>Moderate Risk (Be Prepared)</b>
<span style="display: inline-block; width: 20px; height: 10px; background-color: yellow; margin-right: 5px;"></span> <b>Low Threat (Be Updated)</b>	<span style="display: inline-block; width: 20px; height: 10px; background-color: yellow; margin-right: 5px;"></span> <b>Low Risk (Be Updated)</b>