



India Meteorological Department
(Ministry of Earth Sciences)

NATIONAL BULLETIN NO. 47 (LAND/02/2024)

TIME OF ISSUE: 0200 HOURS IST

DATED: 02.09.2024

FROM: INDIA METEOROLOGICAL DEPARTMENT (FAX NO. 24643965/24699216/24623220)

TO: CONTROL ROOM, NDM, MINISTRY OF HOME AFFAIRS (FAX.NO. 23093750)
CONTROL ROOM NDMA (FAX.NO. 26701729)
CABINET SECRETARIAT (FAX.NO.23012284, 23018638)
PS TO HON'BLE MINISTER FOR S & T AND EARTH SCIENCES (FAX NO.23316745)
SECRETARY, MOES (FAX NO. 24629777)
H.Q. (INTEGRATED DEFENCE STAFF AND CDS) (FAX NO. 23005137/23005147)
DIRECTOR GENERAL, DOORDARSHAN (23385843)
DIRECTOR GENERAL, AIR (23421105, 23421219)
PIB MOES (FAX NO. 23389042)
UNI (FAX NO. 23355841)
D.G. NATIONAL DISASTER RESPONSE FORCE (NDRF) (FAX NO. 26105912, 2436 3260)
DIRECTOR, PUNCTUALITY, INDIAN RAILWAYS (FAX NO. 23388503)
CHIEF SECRETARY, ODISHA (FAX NO. 0674-2536660)
CHIEF SECRETARY, WEST BENGAL (FAX NO. 033-22144328)
CHIEF SECRETARY, ANDHRA PRADESH (FAX NO. 0863-2441029)
CHIEF SECRETARY, TELANGANA (FAX NO. 040-23453700)
CHIEF SECRETARY, MAHARASHTRA (FAX NO. 022- 22028594)
CHIEF SECRETARY, GUJARAT (FAX NO. 079-23250305)
CHIEF SECRETARY, DAMAN & DIU (FAX NO. 0260-2230775)
CHIEF SECRETARY, DADRA & NAGAR HAVELI (FAX NO. 0260-2645466)
CHIEF SECRETARY, GOA (FAX NO. 0832-2415201)

Sub: (a) Deep Depression (Remnant of Cyclonic Storm "ASNA") over northwest Arabian Sea and (b) Depression over Southeast Vidarbha and neighbourhood

(a) Deep Depression (Remnant of Cyclonic Storm "ASNA") over northwest Arabian Sea
The Deep Depression (Remnant of Cyclonic Storm "ASNA") over northwest Arabian Sea moved south-southwestwards with a speed of 10 kmph during past 6 hours and lay centered at 2330 hours IST of 01st September, 2024 over the same region near latitude 21.7°N and longitude 61.5°E, about 190 km east-southeast of Ras Al Hadd (Oman) and 390 km east-southeast of Muscat (Oman).

It is likely to continue to move further south-southwestwards over northwest Arabian Sea and weaken gradually into a depression by morning of today, the 2nd September over the same region.

Forecast track and intensity are given in the following table:

Date/Time (IST)	Position (Lat. °N/ long. °E)	Maximum sustained surface wind speed (Kmph)	Category of cyclonic disturbance
01.09.24/2330	21.7/61.5	50-60 gusting to 70	Deep Depression
02.09.24/0530	21.2/61.3	40-50 gusting to 60	Depression

Warnings:

(i) Wind warning:

- Squally wind speed reaching 50-60 kmph gusting to 70 kmph is prevailing over northwest Arabian Sea and like to become 40-50 kmph gusting to 60 kmph by early morning of 2nd September and decrease thereafter.
- Squally wind speed reaching 40-50 kmph gusting to 60 kmph is likely to prevail over central Arabian Sea till 2nd September morning and improve gradually thereafter.
- Strong wind speed reaching 30-40 kmph gusting to 50 kmph is likely along and off Gujarat, Maharashtra and Karnataka coast till morning of 2nd September.

(ii) Sea condition:

- Very Rough to Rough Sea condition is likely to prevail over northwest Arabian Sea till morning of 2nd September and would improve thereafter and rough sea condition is likely over adjoining westcentral Arabian Sea till 2nd September.

(iii) Fishermen warning:

Fishermen are advised not venture into Northwest Arabian Sea and adjoining westcentral Arabian Sea till 2nd September.

(b) Depression over southeast Vidarbha and neighbourhood

The depression over South Chhattisgarh and neighbourhood moved west-northwestwards with a speed of 15 kmph during the past 6 hours and lay centered at 2330 hours IST of 01st September, 2024 over southeast Vidarbha and neighbourhood near latitude 19.3°N and longitude 80.4°E, about 170 km west of Jagdalpur (Chhattisgarh), 120 km east-northeast of Ramagundam (Telangana), 160km south-southeast of Bramhapuri (Maharashtra) and 140 km east-southeast of Chandrapur (Maharashtra).

It is likely to move nearly northwestwards across Vidarbha and weaken into a Well Marked Low Pressure Area during next 12 hours.

Warnings:

(i) Rainfall Warning:

Vidarbha: Light to moderate rainfall at most places with isolated heavy to extremely heavy rainfall at a few places and extremely heavy rainfall at isolated places on 2nd September.

Marathwada: Light to moderate rainfall at most places with heavy to very heavy rainfall at isolated places on 2nd September.

East Madhya Pradesh: Light to moderate rainfall at most places with heavy to very heavy rainfall at isolated places is likely on 2nd September.

West Madhya Pradesh: Light to moderate rainfall at most places with heavy to very heavy rainfall at isolated places on 2nd September.

East Rajasthan: Light to moderate rainfall at most places with heavy rainfall at isolated places on 2nd September.

Gujarat region: Light to moderate rainfall at most places with heavy rainfall at isolated places on 1st and heavy to very heavy rainfall at isolated places on 2nd September.

North Madhya Maharashtra: Light to moderate rainfall at most places with heavy rainfall at isolated places on 2nd September.

Telangana: Light to moderate rainfall at most places with isolated heavy rainfall over north Telangana on 2nd September.

South Chhattisgarh Light to moderate rainfall at many places with heavy rainfall at isolated places very likely on 2nd September

South Odisha & North Andhra Pradesh: Light to moderate rainfall at many places likely on 2nd September.

(ii) Wind warning:

- Squally weather with wind speed reaching 35-45 kmph gusting to 55 kmph is likely over South Chhattisgarh, Telangana, Marathwada and Vidarbha during next 12 hours.

(iii) Sea condition:

- Rough sea condition is very likely to prevail over Westcentral and adjoining Northwest Bay of Bengal along & off North Andhra Pradesh & south Odisha coasts during next 06 hours.

(iv) Fishermen warning:

Fishermen are advised not to venture into

- Westcentral & adjoining northwest Bay of Bengal along & off south Odisha and north Andhra Pradesh Coasts during next 6 hours.

(v) Flash Flood Guidance:

Outlook for the Flash Flood Risk (FFR) till 1730 IST of 02-09-2024 :

Low to Moderate flash flood risk likely over few watersheds & neighbourhoods of following Met Sub-divisions during next 24 hours.

Vidarbha - Akola, Amaravati, Bhandara, Buldhana, Chandrapur, Nagpur, Wardha, Washim and Yavatmal districts. West Madhya Pradesh - Betul, Bhopal, Burhanpur, Dewas, Dhar, Harda, Jhabua, Khandwa, Khargone, Raisen, Ratlam, Sehore, Videsha and Hoshangabad districts.
Madhya

Telangana - Adilabad, J. Bhupalpally, Jagtial, Kamareddy, Kumaram Bheem, Mancherial, Nirmal, Nizamabad, Peddapalle, Rajanna Sircilla, Sangareddy and Vikarabad districts.

Maharashtra - Jalgaon district

Marathwada - Aurangabad, Bid, Hingoli, Latur, Osmanabad and Parbhani districts.

❖ **Impact Expected (Andhra Pradesh, south Odisha, south Chhattisgarh, Telangana, Vidarbha, Marathwada, Madhya Pradesh and Gujarat region)**

- Localized Flooding of roads, water logging in low lying areas and closure of underpasses mainly in urban areas of the above region.
- Breaking of tree branches.
- Occasional reduction in visibility due to heavy rainfall.
- Reduction of visibility over sea area due to sea spray induced by strong wind and heavy rainfall.
- Disruption of traffic in major cities due to water logging in roads leading to increased travel time.
- Minor damage to kutcha roads.
- Possibilities of damage to vulnerable structure.
- Localized Landslides/Mudslides/landslips/mud slips/land sinks/mud sinks.
- Damage to horticulture and standing crops in some areas due to inundation.
- It may lead to riverine flooding in some river catchments (for riverine flooding please visit Web page of CWC)

❖ **Action Suggested**

- Fishermen are advised not venture into
 - Northwest Arabian Sea and adjoining westcentral Arabian Sea till 2nd September.
 - Westcentral & adjoining northwest Bay of Bengal and along & off south Odisha and north Andhra Pradesh Coasts during next 6 hours.
- Judicious regulation of offshore/onshore Operations
- Judicious regulation of surface transports including railways and roadways.
- Check for traffic congestion on your route before leaving for your destination.
- Follow any traffic advisories that are issued in this regard.
- Avoid going to areas that face the water logging problems often.

- Avoid staying in vulnerable structure.
- ❖ **Agromet Advisories for Heavy Rainfall** likely over south Chhattisgarh, Telangana, Vidarbha, Marathwada, Madhya Pradesh and Gujarat region) due to Depression
- Make provision for draining out excess water from crop fields to avoid water stagnation.
- Provide mechanical support to horticultural crops and staking to vegetables.

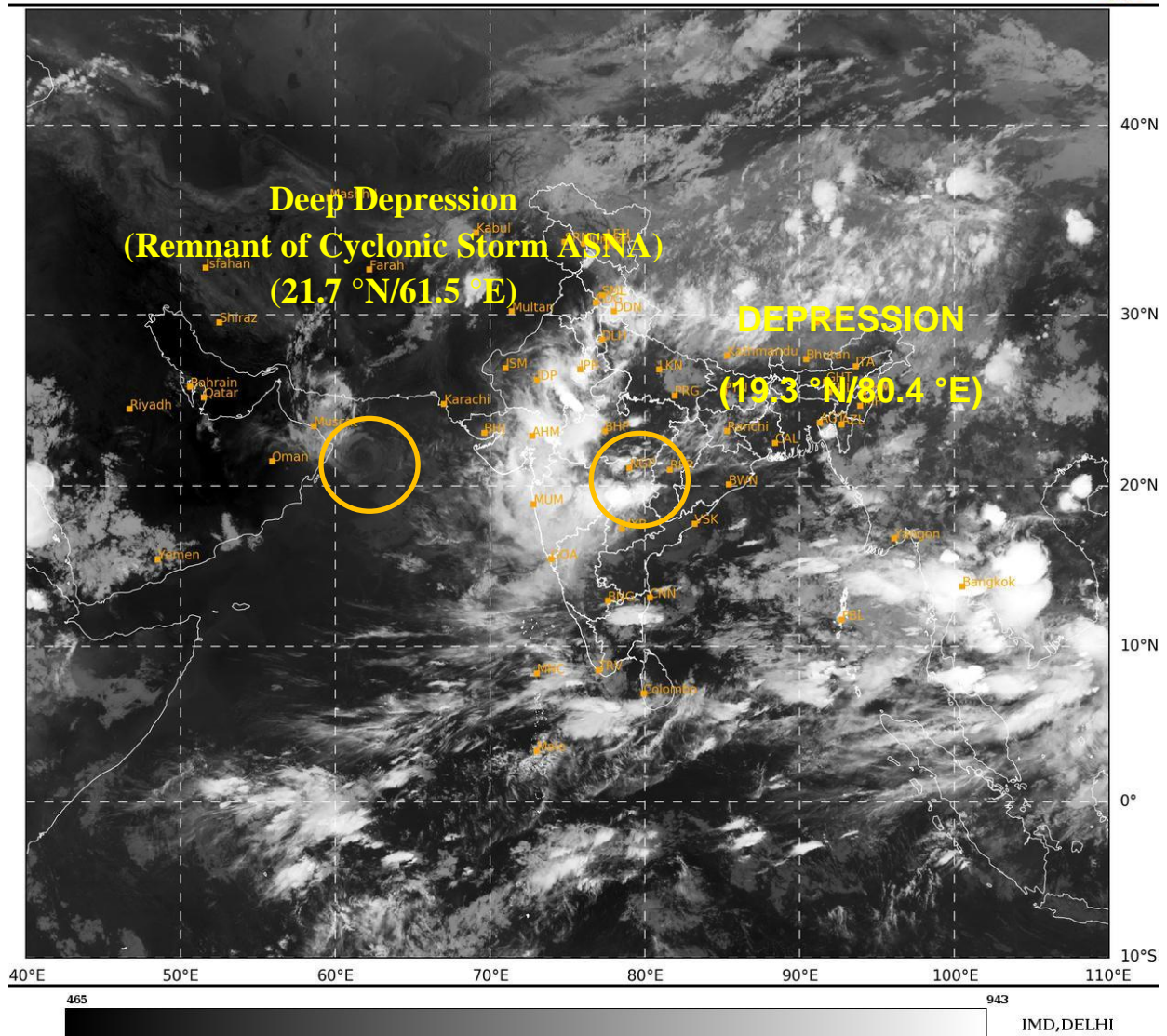
Next bulletin will be issued at 0830 hours IST of today, the 2nd September, 2024.

**(Dr. Shashi Kant)
Scientist-D, RSMC, IMD, New Delhi**

Copy to: ACWC Kolkata/ACWC Mumbai/RMC Mumbai/CWC Ahmedabad/MC Jaipur/RMC, Nagpur/MC, Bhopal//CWC Bhubaneswar/MC, Goa/MC, Ranchi

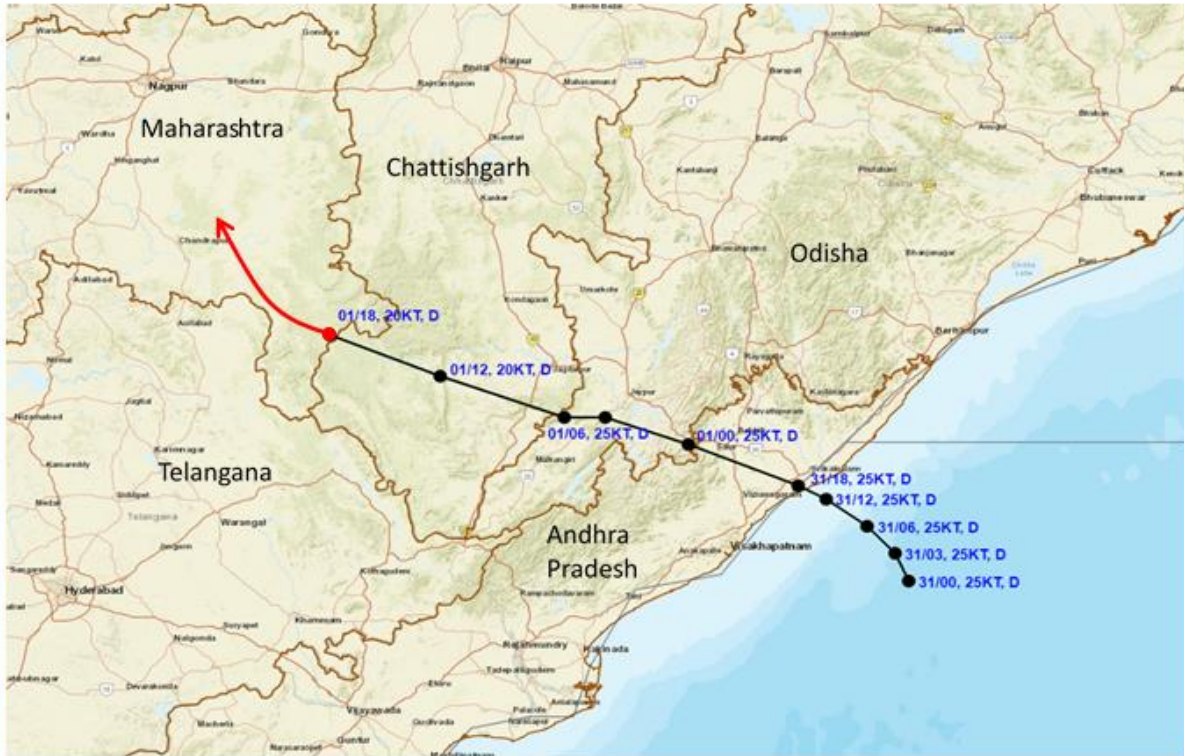
SAT : INSAT-3DR IMG
IMG_TIR1 10.8 um
L1C Mercator

01-09-2024/(1715 to 1742) GMT
01-09-2024/(2245 to 2312) IST





OBSERVED AND FORECAST TRACK OF DEPRESSION OVER SOUTHEAST VIDARBHA AND NEIGHBOURHOOD BASED ON 1800 UTC (2330 IST) OF 1st SEPTEMBER, 2024.



DATE/TIME IN UTC
 IST=UTC + 0530
 L: LOW PRESSURE AREA
 WML: WELL MARKED LOW PRESSURE AREA
 D: DEPRESSION (17-27 KT)
 DD: DEEP DEPRESSION (28-33 KT)
 CS: CYCLONIC STORM (34-47 KT)
 SCS: SEVERE CYCLONIC STORM (48-63KT)
 VSCS: VERY SEVERE CYCLONIC STORM (64-89 KT)
 ESCS: EXTREMELY SEVERE CYCLONIC STORM (90-119 KT)
 SuCS: SUPER CYCLONIC STORM (≥20 KT)

- LESS THAN 34 KT
- 34-47 KT
- ≥ 48 KT
- OBSERVED TRACK
- FORECAST TRACK
- CONE OF UNCERTAINTY

WCB: WESTCENTRAL BAY OF BENGAL
 ECB: EASTCENTRAL BAY OF BENGAL
 NWB: NORTHWEST BAY OF BENGAL



OBSERVED AND FORECAST TRACK OF DEEP DEPRESSION (REMNANT OF ASNA) ALONGWITH CONE OF UNCERTAINTY OVER NORTHWEST ARABIAN SEA BASED ON 1800 UTC (2330 IST) OF 1st SEPTEMBER, 2024.



DATE/TIME IN UTC
IST=UTC + 0530
L: LOW PRESSURE AREA
WML: WELL MARKED LOW PRESSURE AREA
D: DEPRESSION (17-27 KT)
DD: DEEP DEPRESSION (28-33 KT)
CS: CYCLONIC STORM (34-47 KT)
SCS: SEVERE CYCLONIC STORM (48-63KT)
VSCS: VERY SEVERE CYCLONIC STORM (64-89 KT)
ESCS: EXTREMELY SEVERE CYCLONIC STORM (90-119 KT)
SuCS: SUPER CYCLONIC STORM (≥ 120 KT)

● LESS THAN 34 KT
○ 34-47 KT
○ ≥ 48 KT
— OBSERVED TRACK
— FORECAST TRACK
● CONE OF UNCERTAINTY



OBSERVED AND FORECAST TRACK OF DEEP DEPRESSION (REMNANT OF ASNA) ALONGWITH QUADRANT WIND DISTRIBUTION OVER NORTHWEST ARABIAN SEA BASED ON 1800 UTC (2330 IST) OF 1st SEPTEMBER, 2024.



DATE/TIME IN UTC

IST=UTC + 0530

L: LOW PRESSURE AREA

WML: WELL MARKED LOW PRESSURE AREA

D: DEPRESSION (17-27 KT)

DD: DEEP DEPRESSION (28-33 KT)

CS: CYCLONIC STORM (34-47 KT)

SCS: SEVERE CYCLONIC STORM (48-63KT)

VSCS: VERY SEVERE CYCLONIC STORM (64-89 KT)

ESCS: EXTREMELY SEVERE CYCLONIC STORM (90-119 KT)

SuCS: SUPER CYCLONIC STORM (≥ 120 KT)

● LESS THAN 34 KT

○ 34-47 KT

● ≥ 48 KT

— OBSERVED TRACK

— FORECAST TRACK

— CONE OF UNCERTAINTY

AREA OF MAXIMUM SUSTAINED WIND SPEED:

— 28-33 KT (52-61 KMPH)

— 34-49 KT (62-91 KMPH)

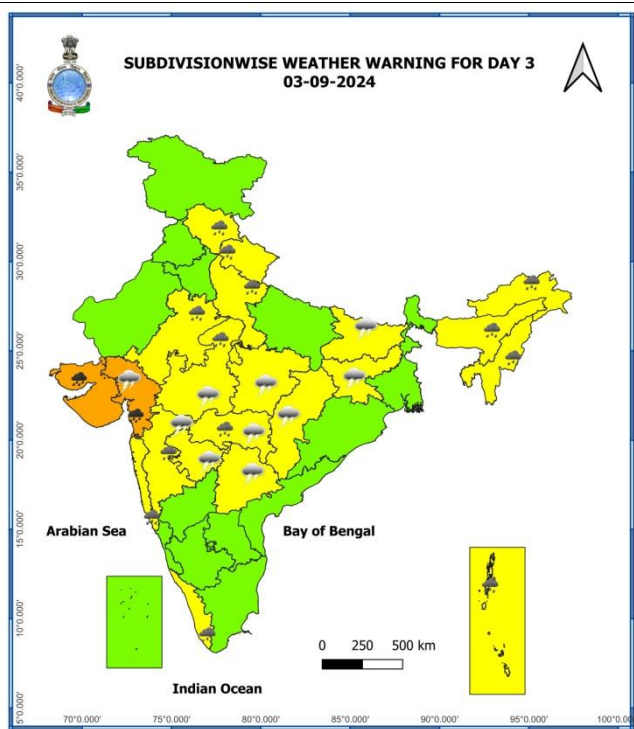
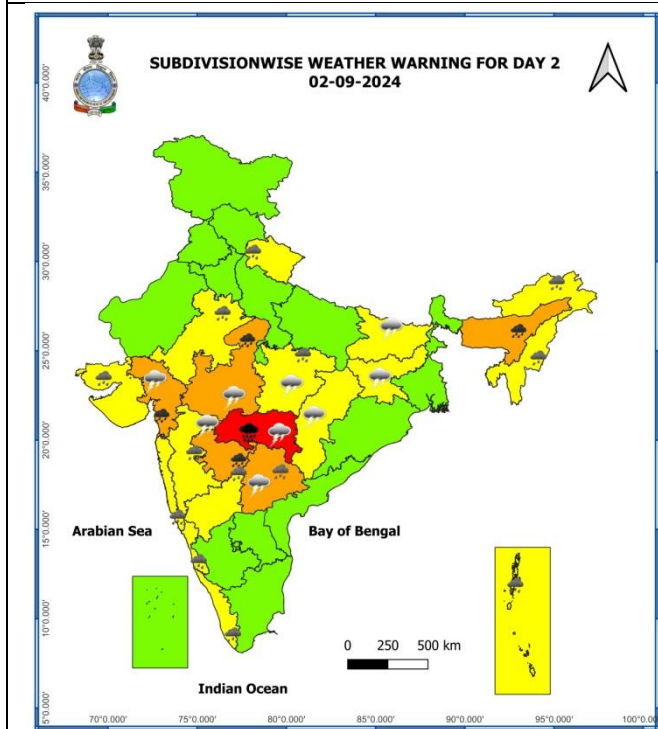
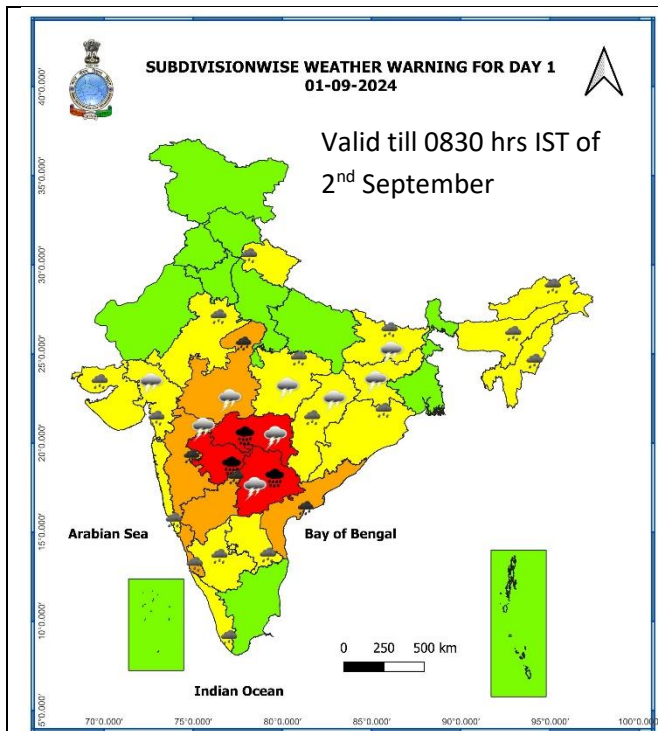
— 50-63 KT (92-117 KMPH)

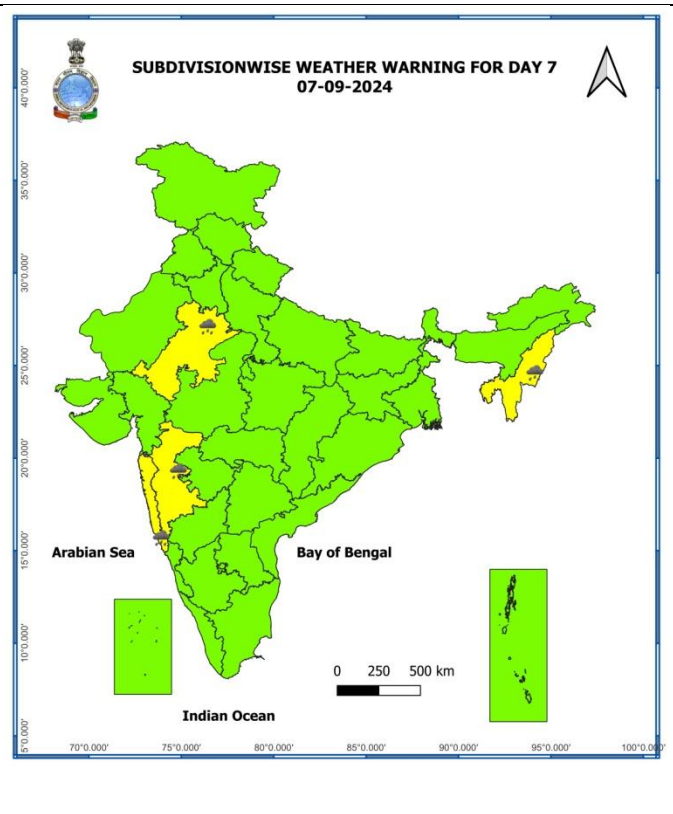
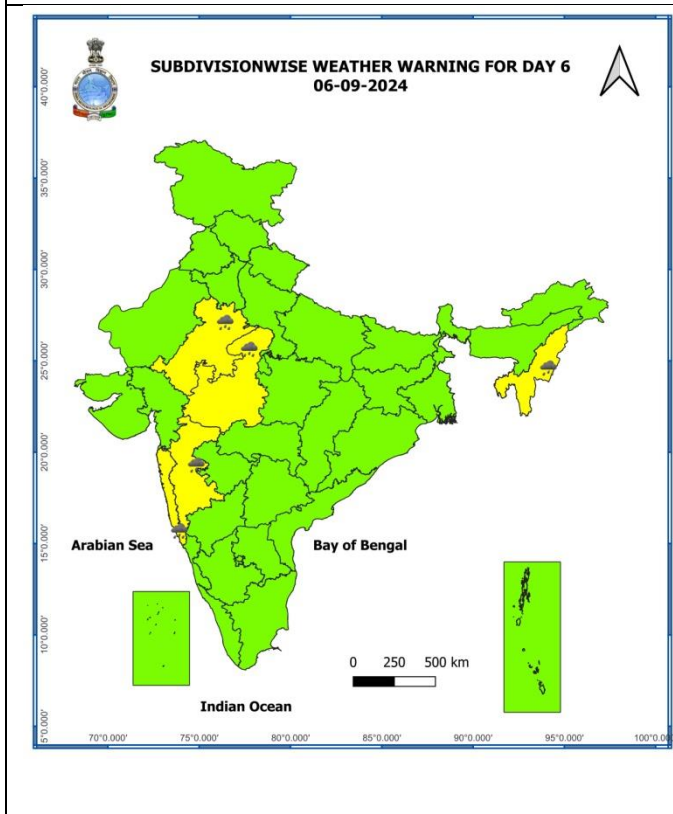
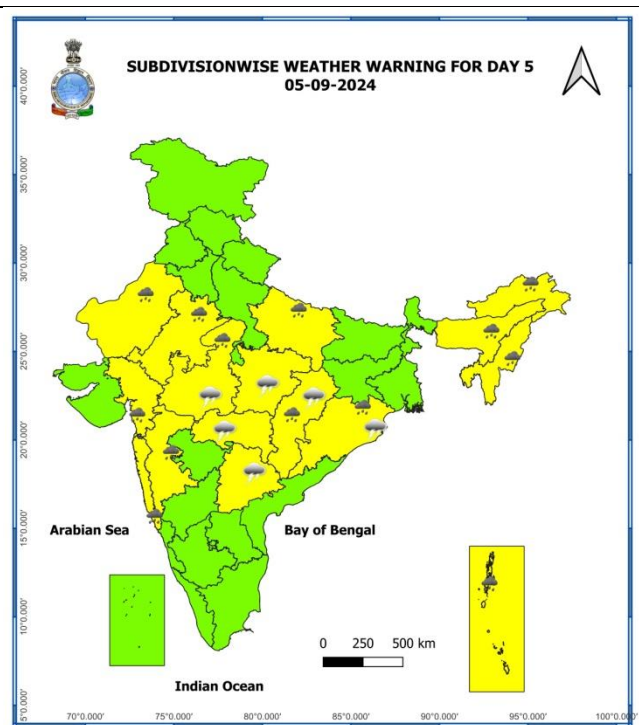
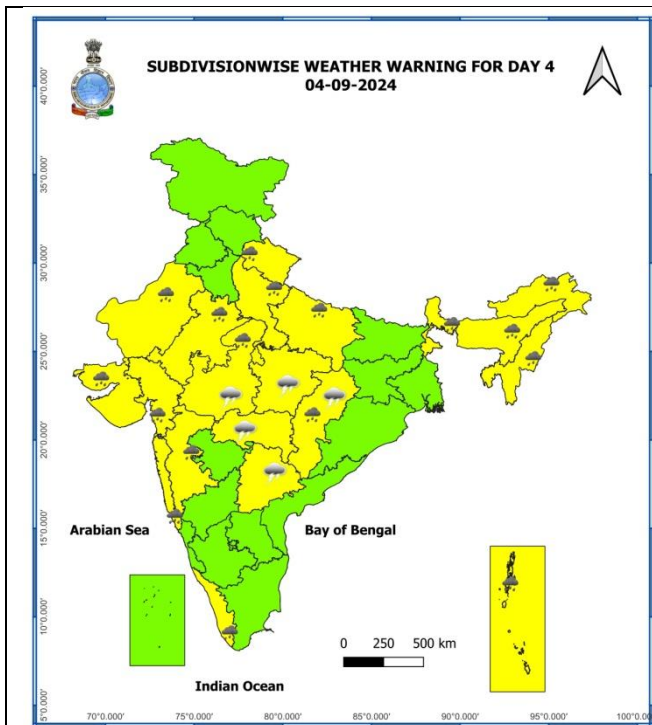
— ≥ 64 KT (≥118 KMPH)

IMPACT OVER THE SEA

MSW (knot/kmph)	Impact	Action
28-33 (52-61)	Very rough seas	Total suspension of fishing operations
34-49 (62-91)	High to very high seas	Total suspension of fishing operations
50-63 (92-117)	Very high seas	Total suspension of fishing operations
≥ 64 (≥118)	Phenomenal	Total suspension of fishing operations

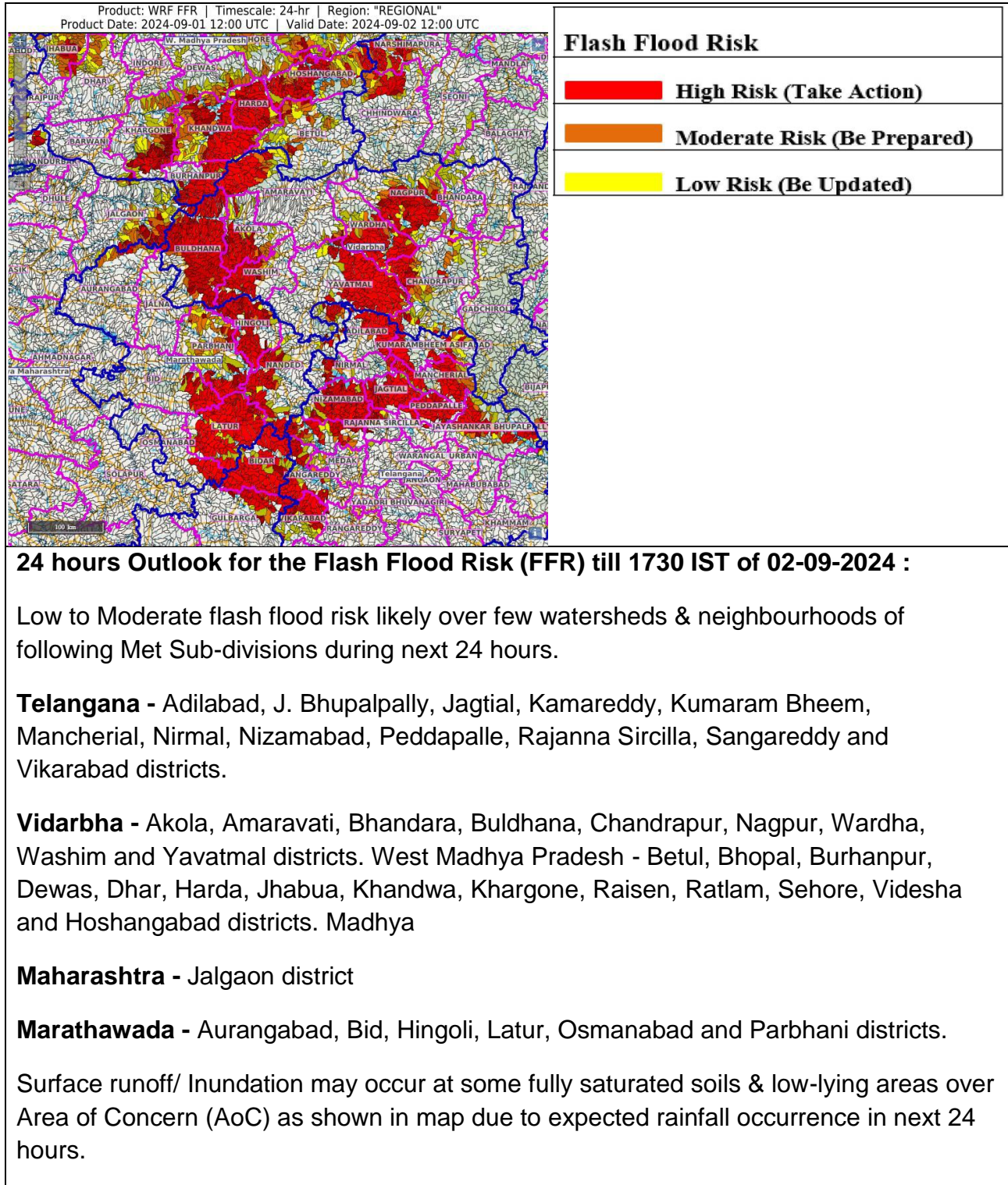
Weather Warning Graphics





- Action may be taken based on **ORANGE** AND **RED** COLOUR warnings.
- Vulnerable regions likely urban and hilly areas action may be initiated for heavy rainfall warning.
- As the lead period increases forecast accuracy decreases.

Flash Flood Guidance



Fishermen Warning Graphics

