



**India Meteorological Department  
(Ministry of Earth Sciences)**

**NATIONAL BULLETIN NO. 7 (LAND/01/2024)**

**TIME OF ISSUE: 0230 HOURS IST**

**DATED:04.08.2024**

**FROM: INDIA METEOROLOGICAL DEPARTMENT (FAX NO. 24643965/24699216/24623220)**

**TO: CONTROL ROOM, NDM, MINISTRY OF HOME AFFAIRS (FAX.NO. 23093750)**

**CONTROL ROOM NDMA (FAX.NO. 26701729)**

**CABINET SECRETARIAT (FAX.NO.23012284, 23018638)**

**PS TO HON'BLE MINISTER FOR S & T AND EARTH SCIENCES (FAX NO.23316745)**

**SECRETARY, MOES (FAX NO. 24629777)**

**H.Q. (INTEGRATED DEFENCE STAFF AND CDS) (FAX NO. 23005137/23005147)**

**DIRECTOR GENERAL, DOORDARSHAN (23385843)**

**DIRECTOR GENERAL, AIR (23421105, 23421219)**

**PIB MOES (FAX NO. 23389042)**

**UNI (FAX NO. 23355841)**

**D.G. NATIONAL DISASTER RESPONSE FORCE (NDRF) (FAX NO. 26105912, 2436 3260)**

**DIRECTOR, PUNCTUALITY, INDIAN RAILWAYS (FAX NO. 23388503)**

**CHIEF SECRETARY, WEST BENGAL (FAX NO. 033-22144328)**

**CHIEF SECRETARY, JHARKHAND (FAX NO. 0651-2400255)**

**CHIEF SECRETARY, CHHATTISGARH (FAX NO. 0771-2221206)**

**CHIEF SECRETARY, BIHAR (FAX NO. 0612-2217085)**

**CHIEF SECRETARY, MADHYA PRADESH (FAX NO. 0755-2441076)**

**CHIEF SECRETARY, UTTAR PRADESH (FAX NO.0522-2239283)**

**CHIEF SECRETARY, RAJASHTHAN (FAX NO. 0141-2227114)**

**CHIEF SECRETARY, GUJARAT (FAX NO. 079-23250305)**

**Sub: (A) Deep Depression over northeast Madhya Pradesh and neighbourhood  
(B) Low Pressure Area over West Rajasthan & adjoining Pakistan**

**(A) Deep Depression over northeast Madhya Pradesh and neighbourhood**

The deep depression over southeast Uttar Pradesh and neighbourhood moved west-northwestwards with a speed of 30 kmph during past 6 hours and lay centered at 2330 hours IST of yesterday, the 3<sup>rd</sup> August over northeast Madhya Pradesh and neighbourhood near latitude 24.9°N and longitude 81.2°E, about 50 km north-northeast of Satna (Madhya Pradesh), 80 km northwest of Sidhi (Madhya Pradesh) and 130 km east of Khajuraho (Madhya Pradesh).

It is likely to continue to move west-northwestwards across north Madhya Pradesh and adjoining Uttar Pradesh and weaken gradually into a depression during next 24 hours.

**(B) Low Pressure Area over West Rajasthan and adjoining Pakistan**

The low pressure area over southwest Rajasthan and neighbourhood now lies over West Rajasthan and adjoining Pakistan at 2330 hours IST of yesterday, the 3<sup>rd</sup> August, 2024. It is likely to move nearly westwards during next 12 hours.

## **Warnings:**

### **(i) Rainfall Warning:**

#### **Jharkhand:**

Light to moderate rainfall at most places with **heavy rainfall** at isolated places on 4<sup>th</sup> August.

#### **Bihar:**

Light to moderate rainfall at most places with **heavy rainfall** at isolated places on 4<sup>th</sup> August.

#### **Chhattisgarh:**

Light to moderate rainfall at most places with **heavy rainfall** at isolated places on 4<sup>th</sup> August.

#### **East Madhya Pradesh:**

Light to moderate rainfall at most places with **heavy to very heavy & extremely heavy rainfall** at isolated places very likely on 4<sup>th</sup> August.

#### **West Madhya Pradesh:**

Light to moderate rainfall at most places with **heavy to very heavy & extremely heavy rainfall** on 4<sup>th</sup> August and **heavy to very heavy rainfall** at isolated places on 5<sup>th</sup> August.

#### **East Uttar Pradesh:**

Light to moderate rainfall at many places with **heavy to very heavy rainfall** at a few places on 4<sup>th</sup> August.

#### **West Uttar Pradesh:**

Light to moderate rainfall at many places with heavy to very heavy rainfall at isolated places on 4<sup>th</sup> August.

#### **East Rajasthan:**

Light to moderate rainfall at most places with **heavy to very heavy & extremely heavy rainfall** at isolated places on 4<sup>th</sup> August. Isolated heavy rainfall is very likely during 5<sup>th</sup>-6<sup>th</sup> August.

#### **West Rajasthan:**

Light to moderate rainfall at most places with **heavy to very heavy rainfall** at isolated places very likely during 4<sup>th</sup> and 5<sup>th</sup> August

#### **Gujarat region:**

Light to moderate rainfall at most places with heavy to very heavy rainfall at isolated on 4<sup>th</sup> August.

#### **Saurashtra & Kutch:**

Light to moderate rainfall at most places with heavy rainfall on 4<sup>th</sup> |August.

### **(ii) Wind warning:**

- Strong wind speed reaching 40-50 kmph gusting to 60 kmph is very likely over north Madhya Pradesh and adjoining Uttar Pradesh on 4<sup>th</sup> August.
- Strong wind speed reaching 35-45 kmph gusting to 55 kmph is very likely over West Madhya Pradesh and adjoining East Rajasthan & West Uttar Pradesh on 5<sup>th</sup> August.

### **(iii) Impact Expected**

- Localized Flooding of roads, water logging in low lying areas and closure of underpasses mainly in urban areas of the above region.
- Occasional reduction in visibility due to heavy rainfall.
- Disruption of traffic in major cities due to water logging in roads leading to increased travel time.
- Minor damage to kutcha roads.
- Possibilities of damage to vulnerable structure.
- Localized Landslides/Mudslides/landslips/mud slips/land sinks/mud sinks.

- Damage to horticulture and standing crops in some areas due to inundation.
- It may lead to riverine flooding in some river catchments (for riverine flooding please visit Web page of CWC)

**(iv) Action Suggested**

- Check for traffic congestion on your route before leaving for your destination.
- Follow any traffic advisories that are issued in this regard.
- Avoid going to areas that face the water logging problems often.
- Avoid staying in vulnerable structure.

**(v) Agromet advisories for Heavy Rainfall likely over various parts of the country**

- Make provision for draining out excess water from crop fields to avoid water stagnation in West Bengal, Sub Himalayan West Bengal, Odisha, Jharkhand, Bihar, Rajasthan, Madhya Pradesh, Chhattisgarh.
- Provide mechanical support to horticultural crops and staking to vegetables.

**Next bulletin will be issued at 0830 hours IST of today, the 4<sup>th</sup> August, 2024.**

**(Shibin Balakrishnan)  
Scientist D, Cyclone Warning Division, New Delhi**

*Copy to: ACWC Kolkata/RMC, New Delhi/RMC, Nagpur/MC, Ranch/MC, Raipur/MC, Patna/MC, Bhopal/MC, Jaipur/CWC Bhubaneswar/MC, Lucknow*

## **Realized Rainfall during past 24 hours ending at 0830 hours IST of 03<sup>rd</sup> August, 2024**

### **Gangetic West Bengal**

Dum Dum (North - 24 Panas) - 10, Mo Salt lake(North - 24 Panas) - 8, Diamond Harbour (South - 24 Panas) - 8, Burnpur(Paschim Bardhaman) - 8, Asansol (Paschim Bardhaman) - 8, Rajnagar (Birbhum) - 7

### **Sub Himalayan West Bengal**

Buxaduar(Alipurduar) - 7

### **Bihar**

Puraini(Madhepura) - 11, Sherghati(Gaya) - 9, Dobhi(Gaya) - 8, Imamganj(Gaya) - 8, UdaiKishanganj(Madhepura) - 7, Kumarkhand(Madhepura) - 7, Barachatti(Gaya) - 7, Banka (Banka) - 7, Rajauli(Nawada) - 7, Chausa(Madhepura) - 7, Deo (Aurangabad) - 7

### **Jharkhand**

Mandu(Ramgarh) - 27, Ramgarh (Ramgarh) - 27, BauKanke(Ranchi) - 26, PurviTundi(Dhanbad) - 24, Hendigir(Hazaribag) - 21, Koner(Hazaribag) - 19, Bokaro Thermal (Bokaro) - 17, Ranchi Aero (Ranchi) - 17, Ormanjhi(Ranchi) - 17, Papunki(Dhanbad) - 16, Ramgarh (Ramgarh) - 16, IcarNamkum(Ranchi) - 15, Rajdhanwar(Giridih) - 14, Balumath(Latehar) - 14, Putki(Dhanbad) - 13, Barkisuriya(Giridih) - 13, Bhurkunda(Ramgarh) - 13, Tenughat(Bokaro) - 13, Maithon(Dhanbad) - 13, ManduDvc(Ramgarh) - 13, Gobindpur(Dhanbad) - 12, Tilaiya(Koderma) - 12, Giridih(Giridih) - 12, Bandgaon(West Singbhum) - 12, Sisai(Gumla) - 12, JamtaraFmo(Jamtara) - 12, Kuru (Lohardaga) - 11, Dumri(Giridih) - 11, Panchet(Dhanbad) - 11, Tundi(Dhanbad) - 11, DiyakelKhunti(Khunti) - 11, Chandwa(Latehar) - 11, Raidih(Gumla) - 11, Dhurki(Garhwa) - 10, Daltonganj(Palamu) - 10, Rajmahal(Sahibganj) - 10, Murhu(Khunti) - 9, Lesliganj(Palamu) - 9, Markachou(Koderma) - 9, Torpa(Khunti) - 9, Maharo(Dumka) - 9, Latehar(Latehar) - 9, PalamuDtg(Palamu) - 9, Bharno(Gumla) - 9, Koderma(Koderma) - 9, LateharBalumat(Latehar) - 9, Patratu(Ramgarh) - 9, Ramgarh(bdo) (Ramgarh) - 8, Rania (Khunti) - 8, Messenjoy(Dumka) - 8, Nawa Bazar (Palamu) - 8, Arki(Khunti) - 8, Nandadih(Giridih) - 8, Mohanpur(Deoghar) - 8, Garu(Latehar) - 8, Barkagaon(Hazaribag) - 7, Gola (Ramgarh) - 7, Simdega(Simdega) - 7, Amrapara(Pakur) - 7

### **East Rajasthan**

Masuda Sr (Ajmer) - 18, Nayanagar/beawar(Ajmer) - 17, Pisagan Sr (Ajmer) - 17, Mangliawas Sr (Ajmer) - 15, Bhim(Rajsamand) - 15, Tatgarh Sr (Ajmer) - 13, Deogarh(Rajsamand) - 10, Mounntabu Tehsil Sr (Sirohi) - 9, Begu Sr (Chittorgarh) - 9, Pushkar Sr (Ajmer) - 8, Raipur (Bhilwara) - 7, Hurda Sr (Bhilwara) - 7, Mounnt Abu (Sirohi) - 7, Sangod(Kota) - 7

### **Chhattisgarh**

Shankarh(Balrampur) - 21, Kusmi(Balrampur) - 18, Rajpur(Balrampur) - 16, Odagi(Surajpur) - 13, Ramanujganj(Balrampur) - 12, Pratappur(Surajpur) - 12, Samari(Balrampur) - 12, Chando(Balrampur) - 12, Raghunath Nagar (Balrampur) - 11, Bhanupratappur(Kanker) - 10, Balrampur(Balrampur) - 10, Wandrafnagar(Balrampur) - 10, DouraKochali(Balrampur) - 10, Bhatgaon(Surajpur) - 9, Kelhari(ManendragarhBharatpur) - 9, Janakpur Bharatpur(ManendragarhBharatpur) - 9, Chalgali(Balrampur) - 9, Durg(Durg) - 8, Biharpur(Surajpur) - 8, Kutaru(Bijapur) - 8, Bhairamgarh(Bijapur) - 8, Sonhat(Koriya) - 8,

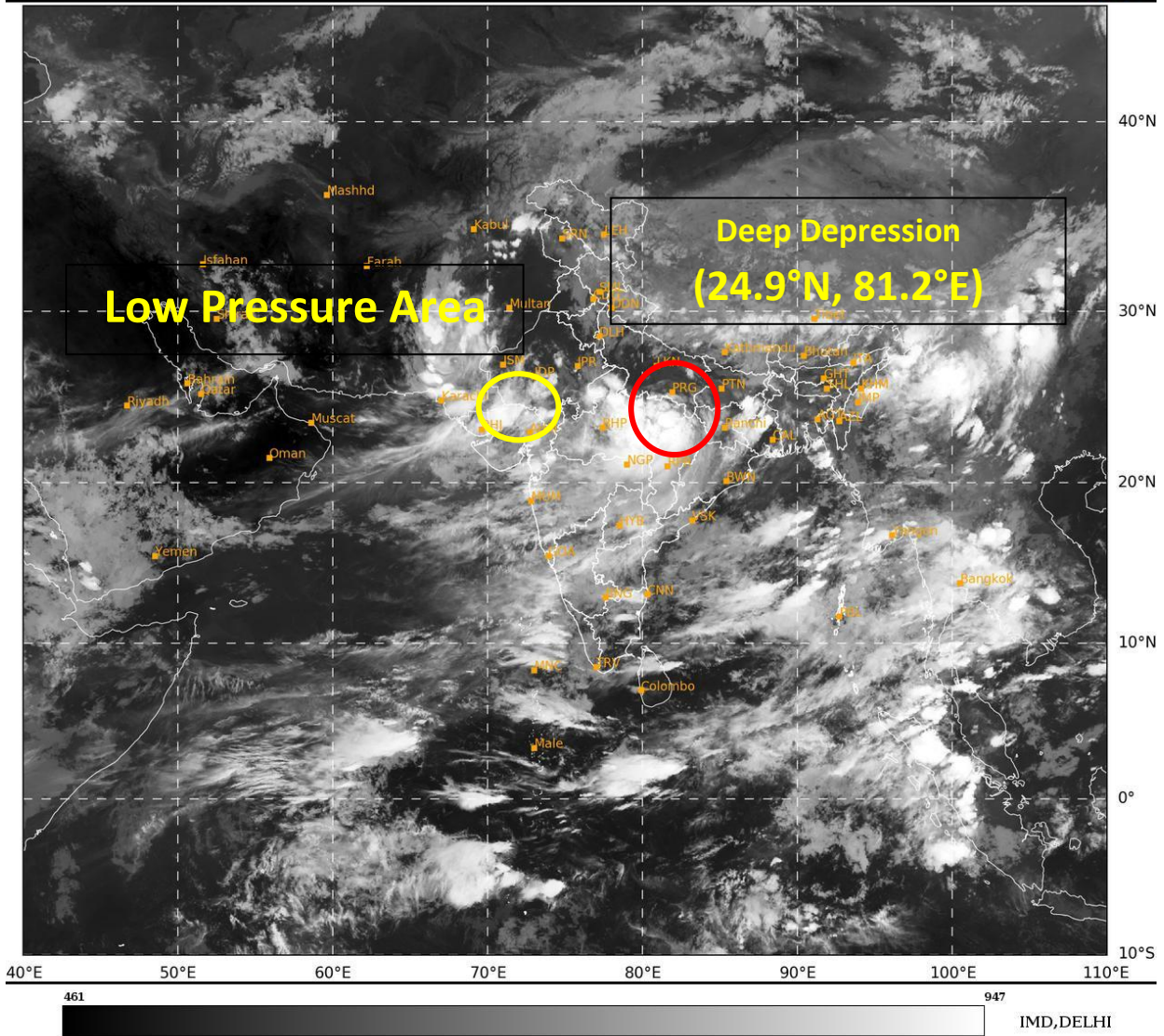
Durgkondal(Kanker) - 8, Kotadol(ManendragarhBharatpur) - 7, Manora(Jashpur) - 7, Latori(Surajpur) - 7, Bhaiyathan(Surajpur) - 7, Pakhanjur(Kanker) - 7, Kunkuri(Jashpur) - 7, Lundra(Surguja) – 7

### **East Madhya Pradesh**

Amarpatan(Satna) - 9, Ramnagar(Satna) - 9, Matiyari(Mandla) - 9, Jaisingh Nagar (Shahdol) - 8, Barhi(Katni) - 7, Khurai(Sagar) - 7, Venkatnagar(Anuppur) - 7, Sarai (Singrauli) - 7, Nagode(Satna) - 7, Jaitpur(Shahdol) – 7

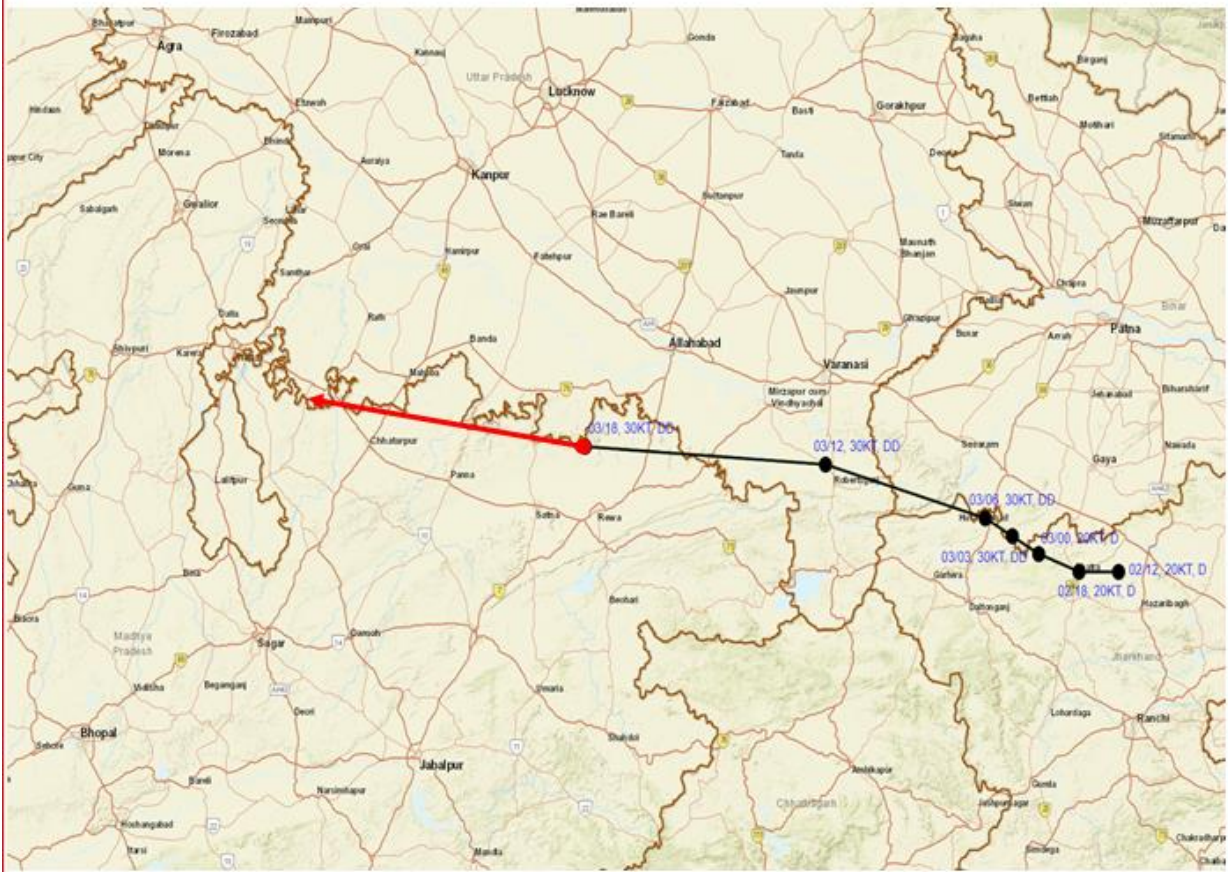
### **West Madhya Pradesh**

Biaora(Rajgarh) - 12, Sultanpur (Raisen) - 11, Harda(Harda) - 11, Raisen- (Raisen) - 9, Gairatgang(Raisen) - 8, Bareli (Raisen) - 8, Sehore- (Sehore) - 7, Udaipura(Raisen) - 7, Badi(Raisen) - 7, Shamshabad(Vidisha) - 7, Berasia(Bhopal) - 7, Ganjbasoda(Vidisha) - 7





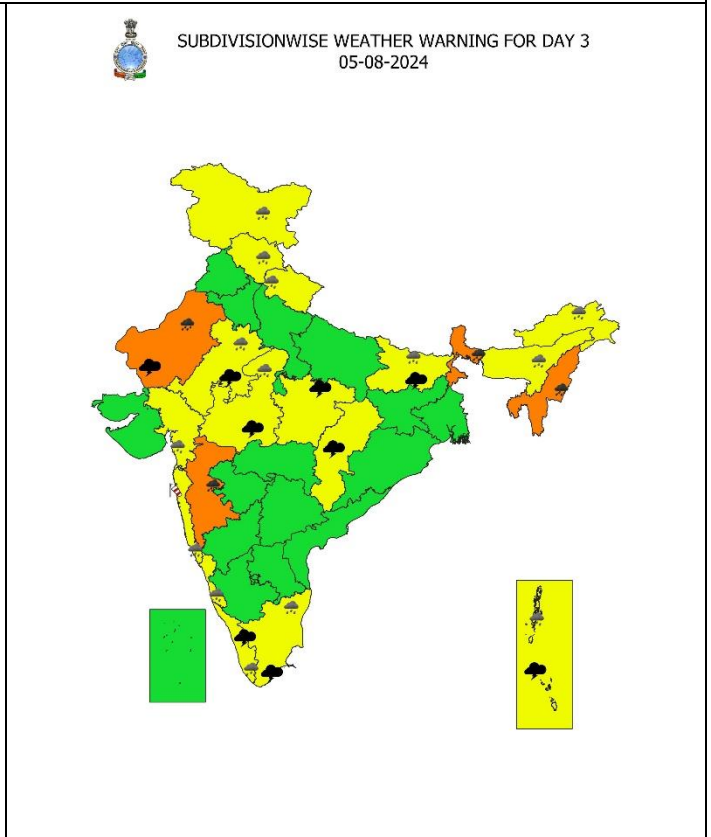
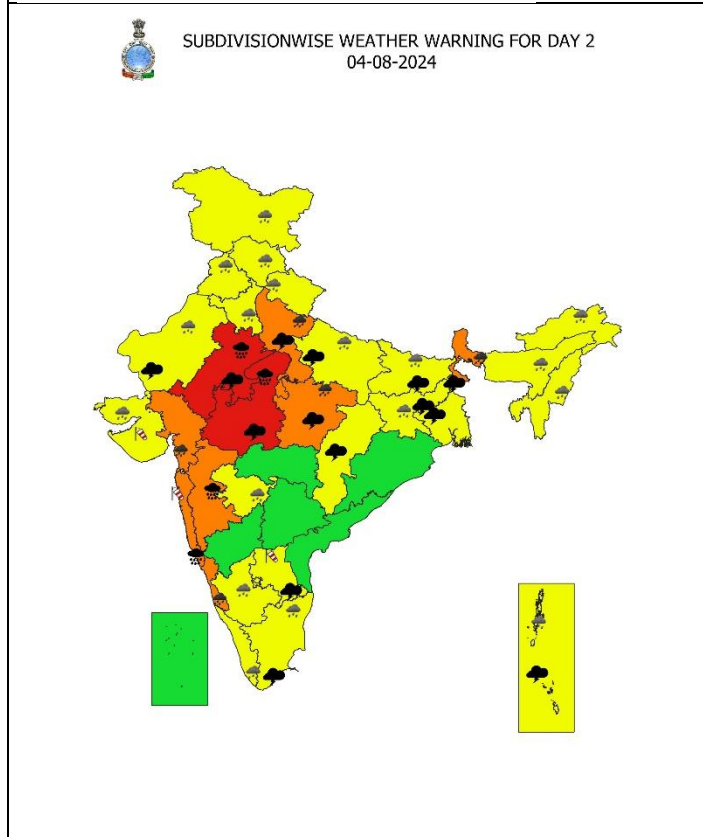
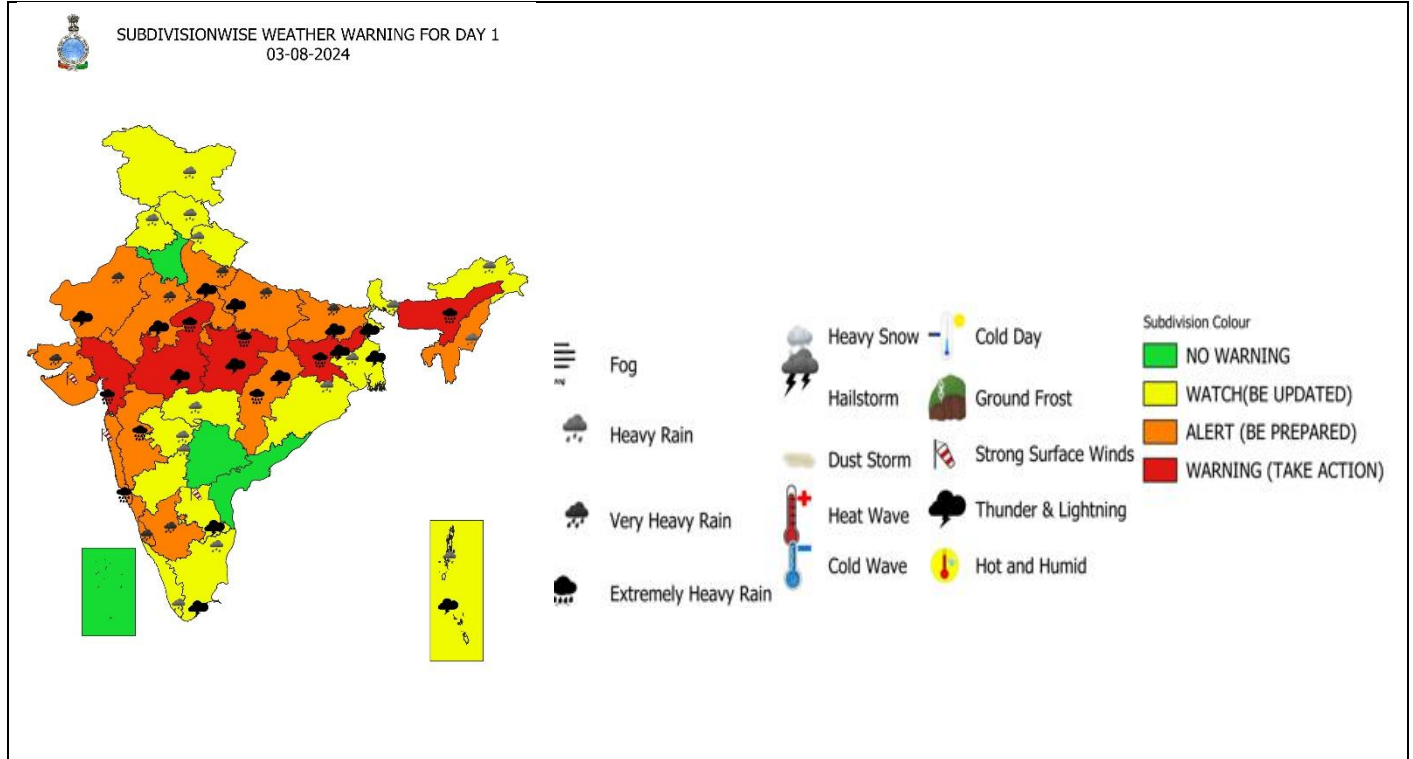
**OBSERVED AND FORECAST TRACK OF DEEP DEPRESSION OVER NORTHEAST MADHYA PRADESH AND NEIGHBOURHOOD BASED ON 1800 UTC OF 03<sup>rd</sup> AUGUST, 2024.**



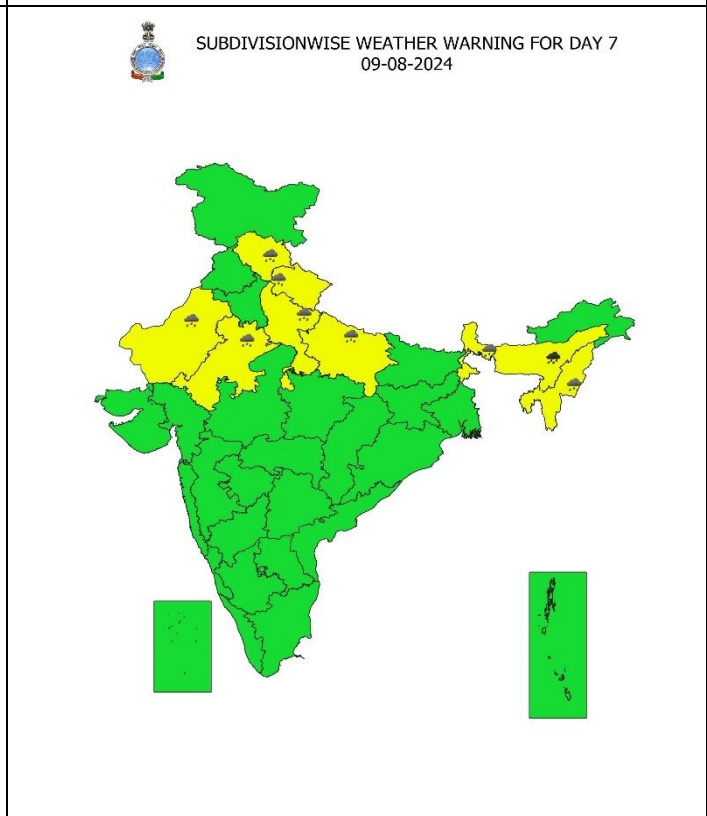
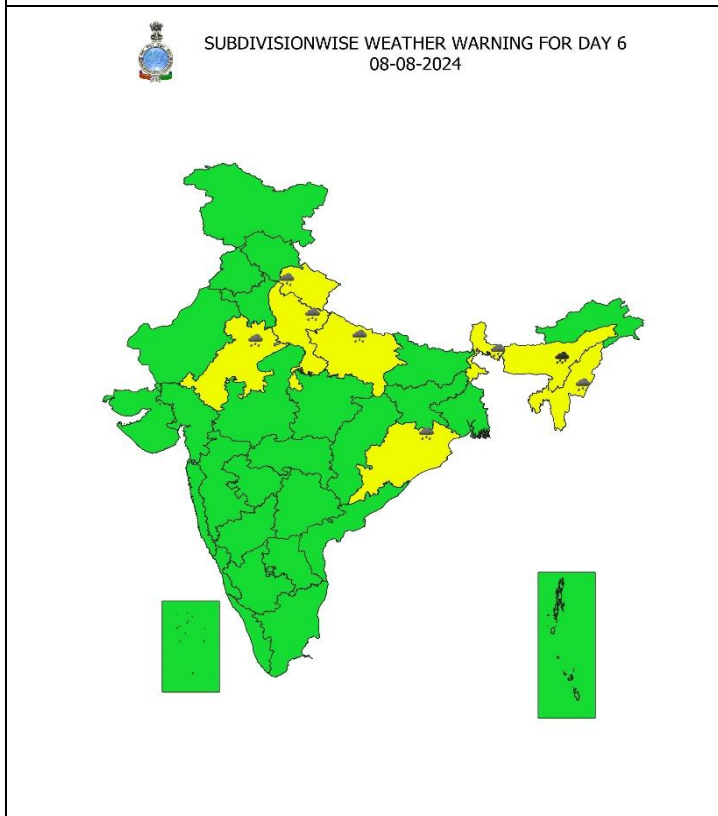
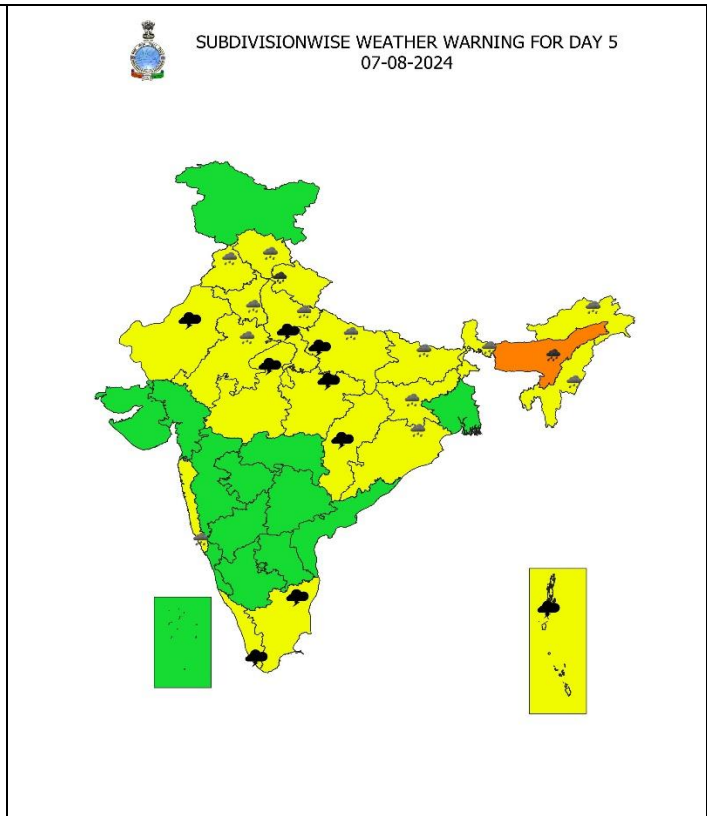
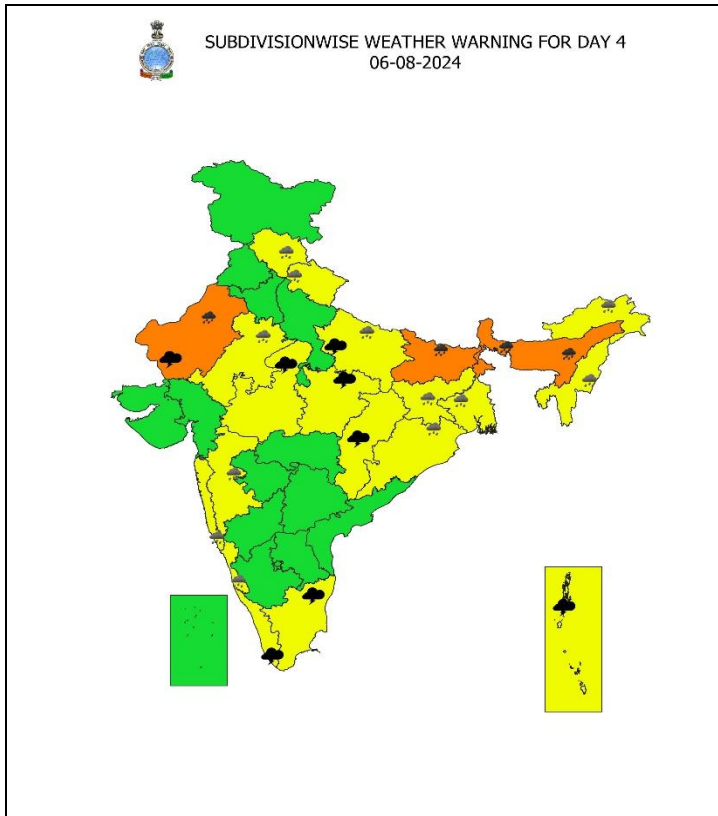
DATE/TIME IN UTC  
 IST=UTC + 0530  
 L: LOW PRESSURE AREA  
 WML: WELL MARKED LOW PRESSURE AREA  
 D: DEPRESSION (17-27 KT)  
 DD: DEEP DEPRESSION (28-33 KT)  
 CS: CYCLONIC STORM (34-47 KT)  
 SCS: SEVERE CYCLONIC STORM (48-63KT)  
 VSCS: VERY SEVERE CYCLONIC STORM (64-89 KT)  
 ESCS: EXTREMELY SEVERE CYCLONIC STORM (90-119 KT)  
 SuCS: SUPER CYCLONIC STORM ( $\geq$  120 KT)

-  LESS THAN 34 KT
-  34-47 KT
-   $\geq$  48 KT
-  OBSERVED TRACK
-  FORECAST TRACK
-  CONE OF UNCERTAINTY

# Warning Graphics







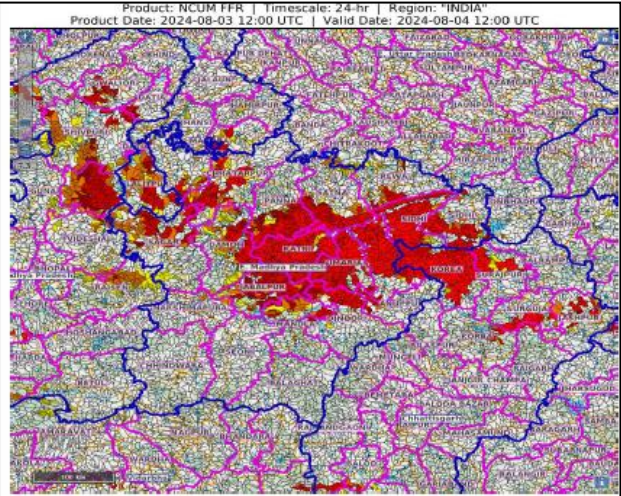
- Action may be taken based on **ORANGE AND RED COLOUR** warnings.
- Vulnerable regions likely urban and hilly areas action may be initiated for heavy rainfall warning.
- As the lead period increases forecast accuracy decreases.

## Flash Flood Guidance

**24 hours Outlook for the Flash Flood Risk (FFR) till 1730 IST of 04-08-2024 :**

**Low to Moderate flash flood risk** likely over few watersheds & neighbourhoods of **Northern Chhattisgarh, East Madhya Pradesh and adjoining parts of West Madhya Pradesh** Met Sub-divisions during next 24 hours.

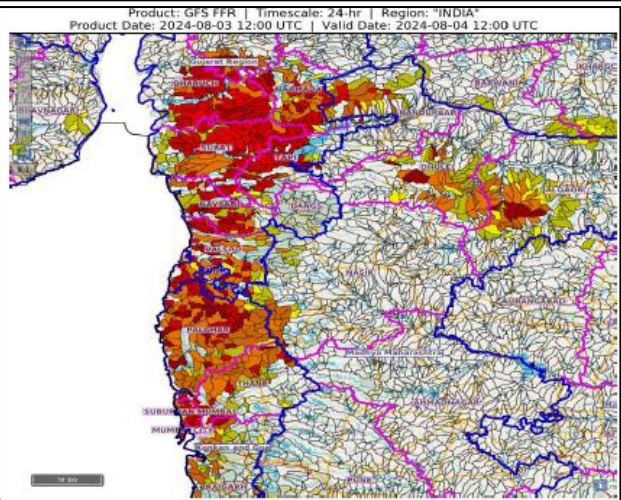
Surface runoff/ Inundation may occur at some fully saturated soils & low-lying areas over AoC as shown in map due to expected rainfall occurrence in next 24 hours.



**24 hours Outlook for the Flash Flood Risk (FFR) till 1730 IST of 04-08-2024 :**

**Low to Moderate flash flood risk** likely over few watersheds & neighbourhoods of **South Gujarat Region, North Konkan & Goa and adjoining Northern parts of Madhya Maharashtra** Met Sub-divisions during next 24 hours.

Surface runoff/ Inundation may occur at some fully saturated soils & low-lying areas over AoC as shown in map due to expected rainfall occurrence in next 24 hours.



**Flash Flood Risk**

**High Risk (Take Action)**

**Moderate Risk (Be Prepared)**

**Low Risk (Be Updated)**