



India Meteorological Department
(Ministry of Earth Sciences)

NATIONAL BULLETIN NO. 02 (AS/02/2024)

TIME OF ISSUE: 0115 HOURS IST

DATED: 14.10.2024

FROM: INDIA METEOROLOGICAL DEPARTMENT

(FAX NO. 24643965/24699216/24623220)

TO: CONTROL ROOM, NDM, MINISTRY OF HOME AFFAIRS (FAX.NO. 23093750)
CONTROL ROOM NDMA (FAX.NO. 26701729)
CABINET SECRETARIAT (FAX.NO.23012284, 23018638)
PS TO HON'BLE MINISTER FOR S & T AND EARTH SCIENCES (FAX NO.23316745)
SECRETARY, MOES (FAX NO. 24629777)
H.Q. (INTEGRATED DEFENCE STAFF AND CDS) (FAX NO. 23005137/23005147)
DIRECTOR GENERAL, DOORDARSHAN (23385843)
DIRECTOR GENERAL, AIR (23421105, 23421219)
PIB MOES (FAX NO. 23389042)
UNI (FAX NO. 23355841)
D.G. NATIONAL DISASTER RESPONSE FORCE (NDRF) (FAX NO. 26105912, 2436 3260)
DIRECTOR, PUNCTUALITY, INDIAN RAILWAYS (FAX NO. 23388503)
CHIEF SECRETARY, MAHARASHTRA (FAX NO. 022- 22028594)
CHIEF SECRETARY, GUJARAT (FAX NO. 079-23250305)
CHIEF SECRETARY, DAMAN & DIU (FAX NO. 0260-2230775)
CHIEF SECRETARY, DADRA & NAGAR HAVELI (FAX NO. 0260-2645466)
CHIEF SECRETARY, GOA (FAX NO. 0832-2415201)
CHIEF SECRETARY, KARNATAKA (FAX NO. 080-22258913)
CHIEF SECRETARY, KERALA (FAX NO. 0471-2327176)
CHIEF SECRETARY, LAKSHADWEEP (FAX NO. 04896-268124)

Sub: Depression over central Arabian Sea

The Depression over central Arabian sea moved west-northwestwards with a speed of 5 kmph during past 6 hours, and lay centred at 2330 hours IST of yesterday, the 13th October, 2024 over the same region near latitude 15.7°N and longitude 64.7°E, about 830 km southeast of Masirah (Oman), 1140 km east of Salalah (Oman) and 1350 km east of Al Ghaidah (Yemen).

It is likely to move west-northwestwards towards Oman coast during next 2 days.

Warnings:

(i) Wind warning:

- Squally wind speed reaching 40-50 kmph gusting to 60 kmph is likely to prevail over central parts of Arabian Sea till 14th October evening and decrease gradually thereafter.
- Squally wind speed reaching 35-45 kmph gusting to 55 kmph is likely to prevail over adjoining central parts of north Arabian Sea till 14th October evening and decrease gradually thereafter.
- Squally weather with wind speed reaching 35-45 kmph gusting to 55 kmph is likely to prevail over adjoining eastcentral Arabian Sea till 14th evening and improve gradually thereafter.
- Squally wind speed reaching 35-45 kmph gusting to 55 kmph is likely to prevail over westcentral Arabian Sea from 14th night till 16th morning and decrease gradually thereafter.

(ii) Sea condition:

- Rough sea conditions is likely to prevail over central parts of Arabian Sea till 14th evening and improve thereafter.
- Rough sea condition is likely over adjoining eastcentral Arabian Sea till 14th evening.
- Rough sea condition is likely to prevail only over westcentral Arabian Sea from 14th night to 16th October morning.

(iii) Fishermen warning:

Fishermen are advised not venture into

- Central and adjoining north Arabian Sea till evening of 14th October.
- Westcentral Arabian Sea till morning of 16th October.

● **Impact Expected over Sea area**

- Reduction of visibility over sea area due to sea spray induced by strong wind and heavy rainfall.
- Impact expected for boats, motor boats, smaller ships and trawler used for fishing.

❖ **Action Suggested**

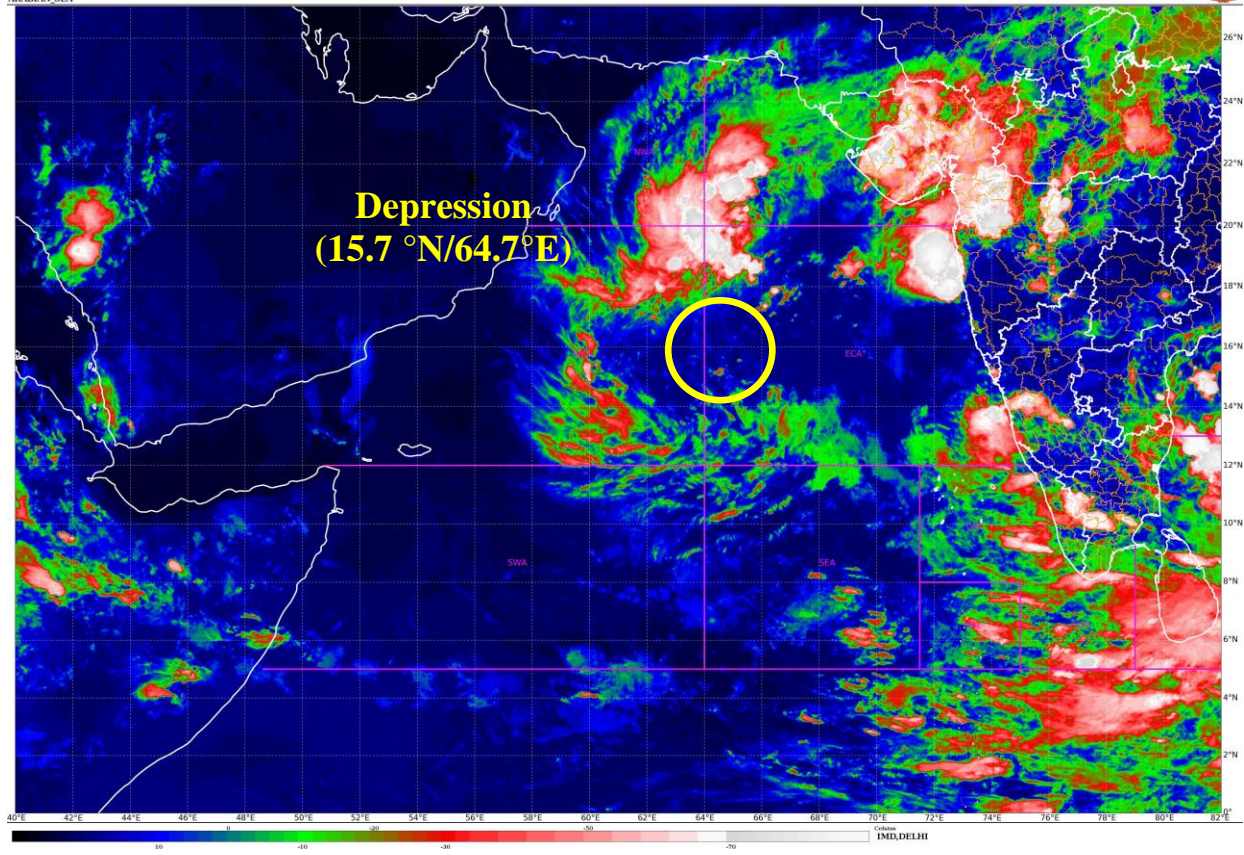
Fishermen are advised not venture into

- Central and adjoining north Arabian Sea till evening of 14th October.
- Westcentral Arabian Sea till morning of 16th October.

Next bulletin will be issued at 0830 hours IST of today, the 14th October, 2024.

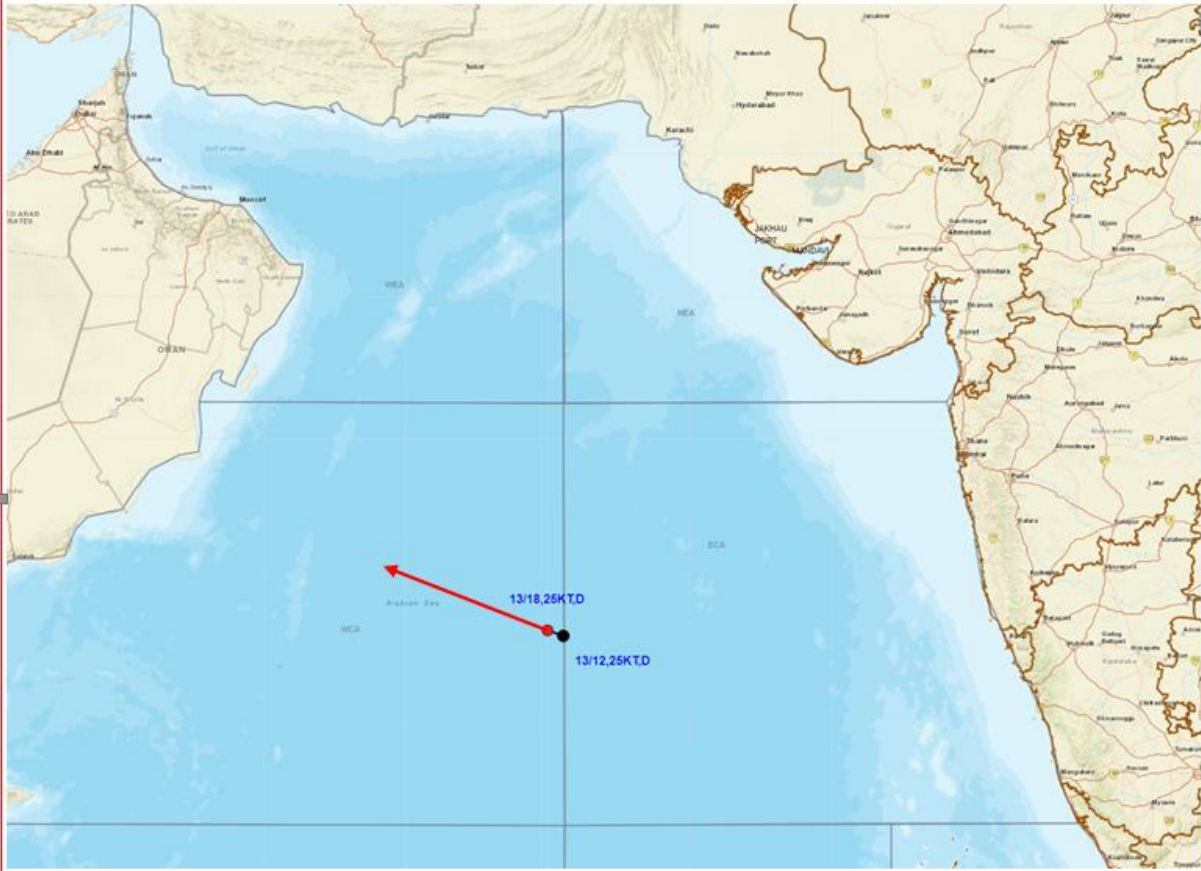
**(Dr. Shashi Kant)
Scientist-D, RSMC,
IMD, New Delhi**

*Copy to: ACWC Kolkata/ACWC Mumbai/ACWC Chennai/CWC Ahmedabad/CWC
Bhubaneswar/CWC Vishakhapatnam CWC, Thiruvananthapuram/ MC, Goa*





OBSERVED AND FORECAST TRACK OF DEPRESSION OVER CENTRAL ARABIAN SEA BASED ON 1800 UTC OF 13th OCTOBER, 2024



DATE/TIME IN UTC

IST=UTC + 0530

L: LOW PRESSURE AREA

WML: WELL MARKED LOW PRESSURE AREA

D: DEPRESSION (17-27 KT)

DD: DEEP DEPRESSION (28-33 KT)

CS: CYCLONIC STORM (34-47 KT)

SCS: SEVERE CYCLONIC STORM (48-63KT)

VSCS: VERY SEVERE CYCLONIC STORM (64-89 KT)

ESCS: EXTREMELY SEVERE CYCLONIC STORM (90-119 KT)

SuCS: SUPER CYCLONIC STORM (\geq 120 KT)

● LESS THAN 34 KT

○ 34-47 KT

○ \geq 48 KT

— OBSERVED TRACK

— FORECAST TRACK

▲ CONE OF UNCERTAINTY

Fishermen Warning Graphics

