



**India Meteorological Department
(Ministry of Earth Sciences)**

NATIONAL BULLETIN NO. 1 (BOB/01/2024)

TIME OF ISSUE: 0915 HOURS IST **DATED: 24.05.2024**
FROM: INDIA METEOROLOGICAL DEPARTMENT (FAX NO. 24643965/24699216/24623220)

TO: CONTROL ROOM, NDM, MINISTRY OF HOME AFFAIRS (FAX.NO. 23093750)
CONTROL ROOM NDMA (FAX.NO. 26701729)
CABINET SECRETARIAT (FAX.NO.23012284, 23018638)
PS TO HON'BLE MINISTER FOR S & T AND EARTH SCIENCES (FAX NO.23316745)
SECRETARY, MOES (FAX NO. 24629777)
H.Q. (INTEGRATED DEFENCE STAFF AND CDS) (FAX NO. 23005137/23005147)
DIRECTOR GENERAL, DOORDARSHAN (23385843)
DIRECTOR GENERAL, AIR (23421105, 23421219)
PIB MOES (FAX NO. 23389042)
UNI (FAX NO. 23355841)
D.G. NATIONAL DISASTER RESPONSE FORCE (NDRF) (FAX NO. 26105912, 2436 3260)
DIRECTOR, PUNCTUALITY, INDIAN RAILWAYS (FAX NO. 23388503)
CHIEF SECRETARY, ANDAMAN & NICOBAR ISLANDS (FAX NO. 03192- 232656)
CHIEF SECRETARY, GOVT. WEST BENGAL (FAX NO. 033-22144328)
CHIEF SECRETARY, GOVT. OF ODISHA (FAX NO. 0674 -2536660)
CHIEF SECRETARY, GOVT. OF ANDHRA PRADESH (FAX NO. 0863-2441029, 08645-246600)
CHIEF SECRETARY, GOVT. OF TAMIL NADU (FAX NO. 044-25672304)
CHIEF SECRETARY, GOVT. OF PUDUCHERRY (FAX NO. 0413-2337575, 2334145)

Sub: Depression formed over central Bay of Bengal (Pre-Cyclone Watch for West Bengal Coast)

The well-marked low pressure area over westcentral & adjoining south Bay of Bengal moved northeastwards during past 12 hours, concentrated into a depression and lay centered at 0530 hrs IST of today, the 24th May, 2024 over central Bay of Bengal near latitude 15.0 degree N and longitude 88.4 degree E, about 800 km south-southwest of Khepupara (Bangladesh) and 810 km south of Canning (West Bengal).

It is very likely to continue to move northeastwards and intensify further into a cyclonic storm over eastcentral Bay of Bengal by 25th May morning. Subsequently, it would move nearly northwards, intensify into a severe cyclonic storm by 25th night. Continuing to move nearly northward, it is very likely to cross Bangladesh and adjoining West Bengal coasts between Sagar Island and Khepupara around 26th May midnight as a severe cyclonic storm.

Forecast track and intensity are given in the following table:

Date/Time (IST)	Position (Lat. °N/ long. °E)	Maximum sustained surface wind speed (Kmph)	Category of cyclonic disturbance
24.05.24/0530	15.0/88.4	40-50 gusting to 60	Depression
24.05.24/1730	15.9/89.2	50-60 gusting to 70	Deep Depression
25.05.24/0530	17.1/89.5	60-70 gusting to 80	Cyclonic Storm
25.05.24/1730	18.0/89.7	80-90 gusting to 100	Cyclonic Storm
26.05.24/0530	19.3/89.8	100-110 gusting to 120	Severe Cyclonic Storm
26.05.24/1730	20.9/89.6	110-120 gusting to 130	Severe Cyclonic Storm
27.05.24/0530	21.9/89.4	110-120 gusting to 135	Severe Cyclonic Storm
27.05.24/1730	23.1/89.5	70-80 gusting to 90	Cyclonic Storm
28.05.24/0530	23.9/89.8	40-50 gusting to 60	Depression

Warnings (Graphics Attached):

Heavy Rainfall Warning:

- (a) Light to moderate rainfall at most places with heavy to very heavy rainfall at isolated places is likely over coastal districts of West Bengal and adjoining districts of North Odisha on 26th & 27th May and isolated extremely heavy rainfall likely over coastal districts of West Bengal on 26th May.
- (b) Light to moderate rainfall at most places with heavy to very heavy rainfall at isolated places is likely over Mizoram, Tripura and South Manipur on 26th and over Assam & Meghalaya, Arunachal Pradesh, Nagaland, Mizoram, Manipur & Tripura on 27th & 28th May.
Isolated extremely heavy rainfall is likely over Assam & Meghalaya on 27th & 28th May, Arunachal Pradesh on 28th May and Mizoram & Tripura on 27th May.
- (c) Light to moderate rainfall at most places with heavy to very heavy rainfall at isolated places are likely over Andaman Islands on 24th May.

Wind Warning:

- ❖ Squally wind speed reaching 40-50 kmph gusting to 60 kmph is likely to prevail over central and adjoining South Bay of Bengal on 24th May. It would become 50-60 kmph gusting to 70 kmph over central Bay of Bengal on 24th May evening.
- ❖ It would extend to adjoining areas of North Bay of Bengal with gale wind speed reaching 60-70 kmph gusting to 80 kmph from 25th May morning. It would further increase becoming 100-110 kmph gusting to 120 kmph over North Bay of Bengal from morning and 110-120 kmph gusting to 120 kmph from evening of 26th May. Gale wind speed reaching 70-80 kmph gusting to 90 kmph is likely over adjoining central Bay of Bengal from 26th morning for subsequent 24 hours.
- ❖ Squally wind speed reaching 40-50 kmph gusting to 60 kmph is likely along & off Bangladesh, West Bengal and adjoining North Odisha coasts from 25th May evening. It is likely to increase becoming gale wind speed reaching 60-70 kmph gusting to 80 kmph from morning of 26th May and 100-120 kmph gusting to 135 kmph along & off Bangladesh and adjoining West Bengal coasts from evening of 26th evening for subsequent 12 hours.
- ❖ Squally wind speed reaching 40-50 kmph gusting to 60 kmph is likely over Andaman Islands and North Andaman Sea on 24th May.

Sea condition:

- ❖ Rough to very rough sea condition is likely over central and adjoining south Bay of Bengal on 24th May. It would become high over central Bay of Bengal on 25th May & 26th May and High to Very High over North Bay of Bengal from 25th evening till 27th May morning.
- ❖ Rough to very rough sea condition is likely along & off Bangladesh, West Bengal and adjoining North Odisha coasts from 25th May evening and high to very high along & off Bangladesh and West Bengal coasts from 26th morning onwards till 27th May morning.
- ❖ Rough to very rough sea condition is likely over Andaman Islands and North Andaman Sea on 24th May.

Fishermen Warning (graphics attached):

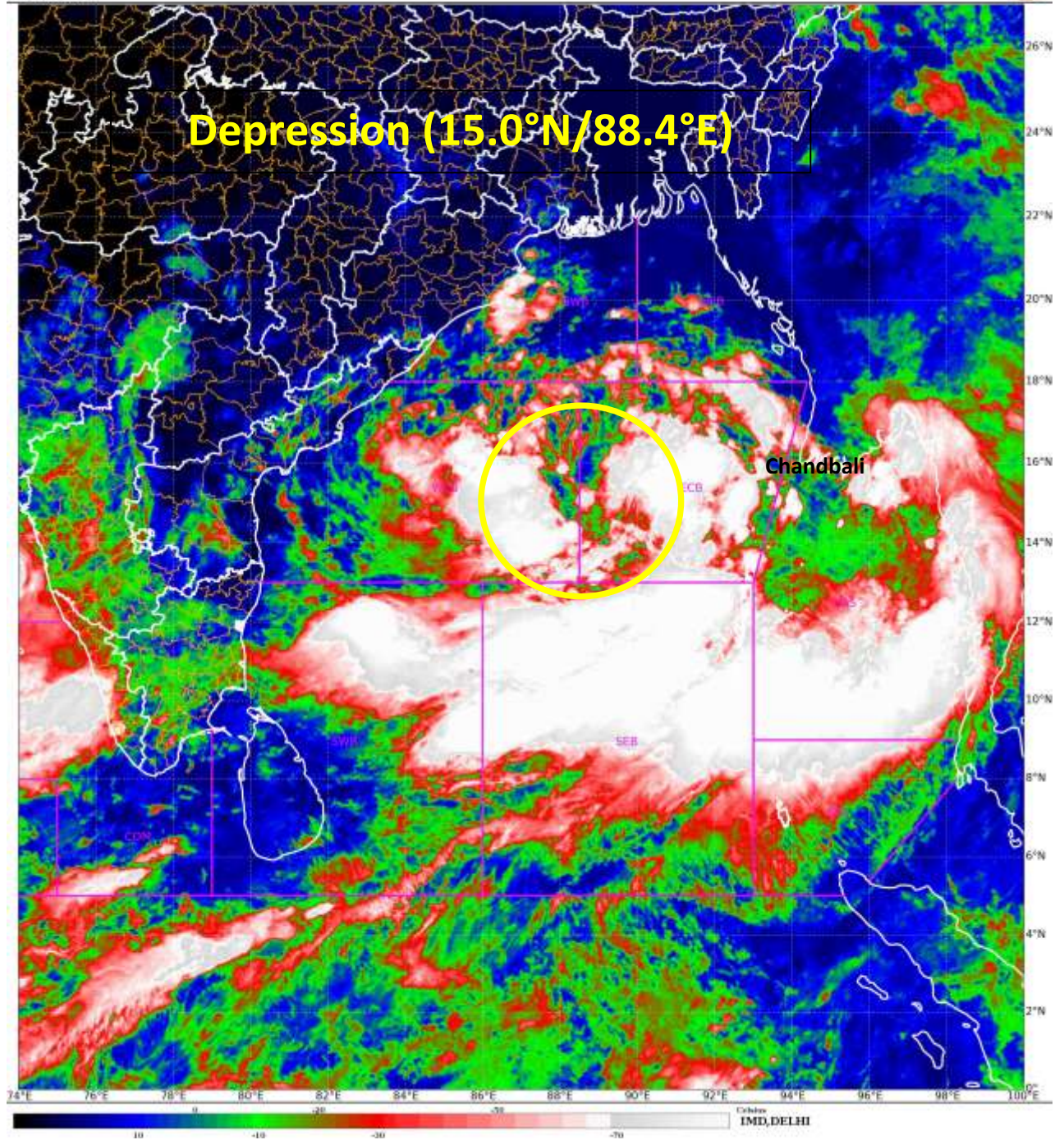
Fishermen are advised not to venture into south Bay of Bengal and Andaman Sea till 24th May, central Bay of Bengal till 26th May and North Bay of Bengal from 25th May till 27th May. Fishermen out at sea are advised to return to the coast.

The system is under continuous surveillance and the next message will be issued at 1230 hours IST of today, the 24th May, 2024.

(Dr. Ananda Kumar Das)

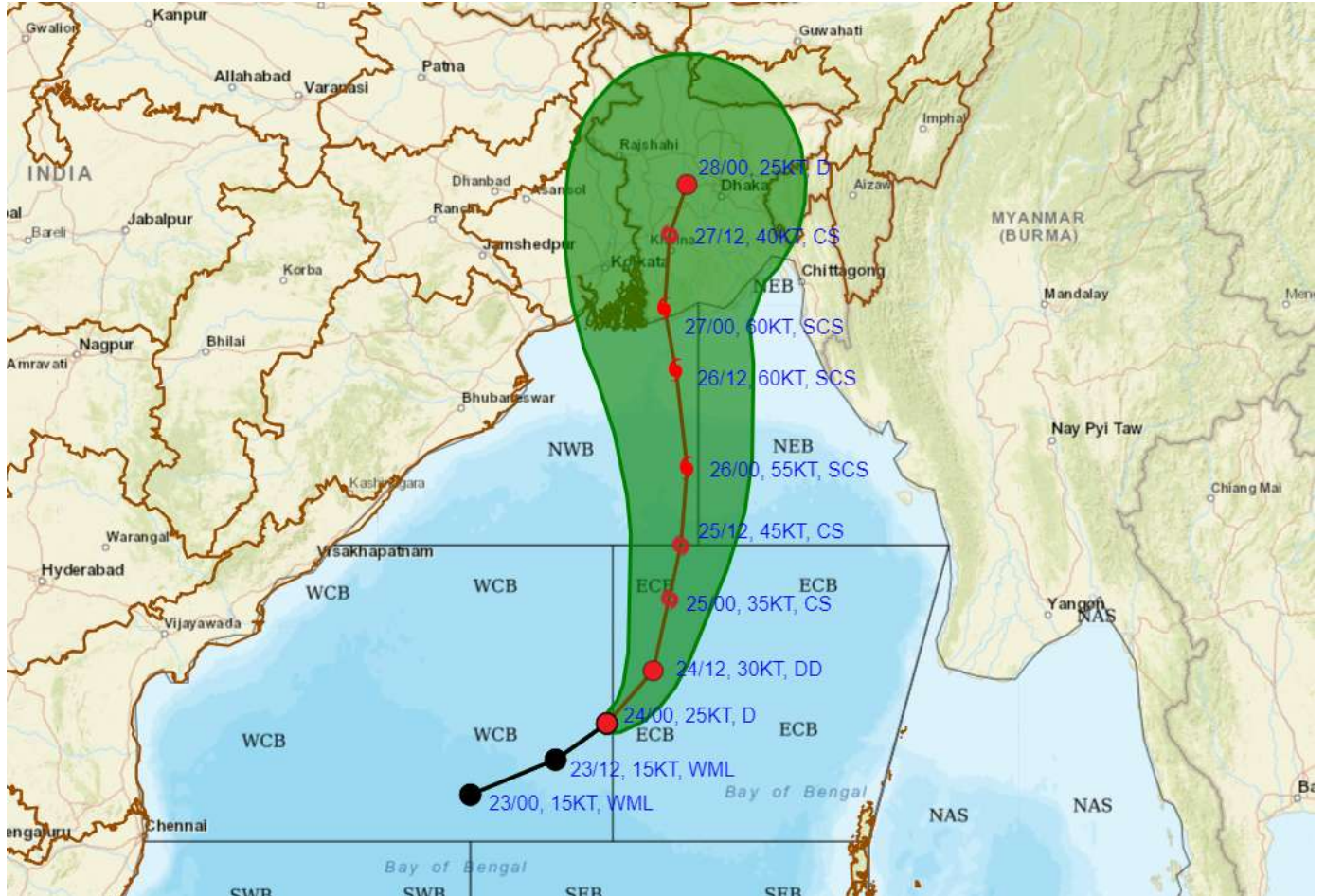
Scientist F, Cyclone Warning Division, New Delhi

Copy to: ACWC Kolkata/ ACWC Chennai/ CWC Bhubaneswar/CWC Visakhapatnam/MO Port Blair





FORECAST TRACK ALONGWITH CONE OF UNCERTAINTY IN ASSOCIATION WITH DEPRESSION OVER CENTRAL BAY OF BENGAL BASED ON 0000 UTC (0530 IST) OF 24TH MAY 2024.



DATE/TIME IN UTC

IST=UTC + 0530

L: LOW PRESSURE AREA

WML: WELL MARKED LOW PRESSURE AREA

D: DEPRESSION (17-27 KT)

DD: DEEP DEPRESSION (28-33 KT)

CS: CYCLONIC STORM (34-47 KT)

SCS: SEVERE CYCLONIC STORM (48-63KT)

VSCS: VERY SEVERE CYCLONIC STORM (64-89 KT)

ESCS: EXTREMELY SEVERE CYCLONIC STORM (90-119 KT)

SuCS: SUPER CYCLONIC STORM (\geq 120 KT)

LESS THAN 34 KT

34-47 KT

\geq 48 KT

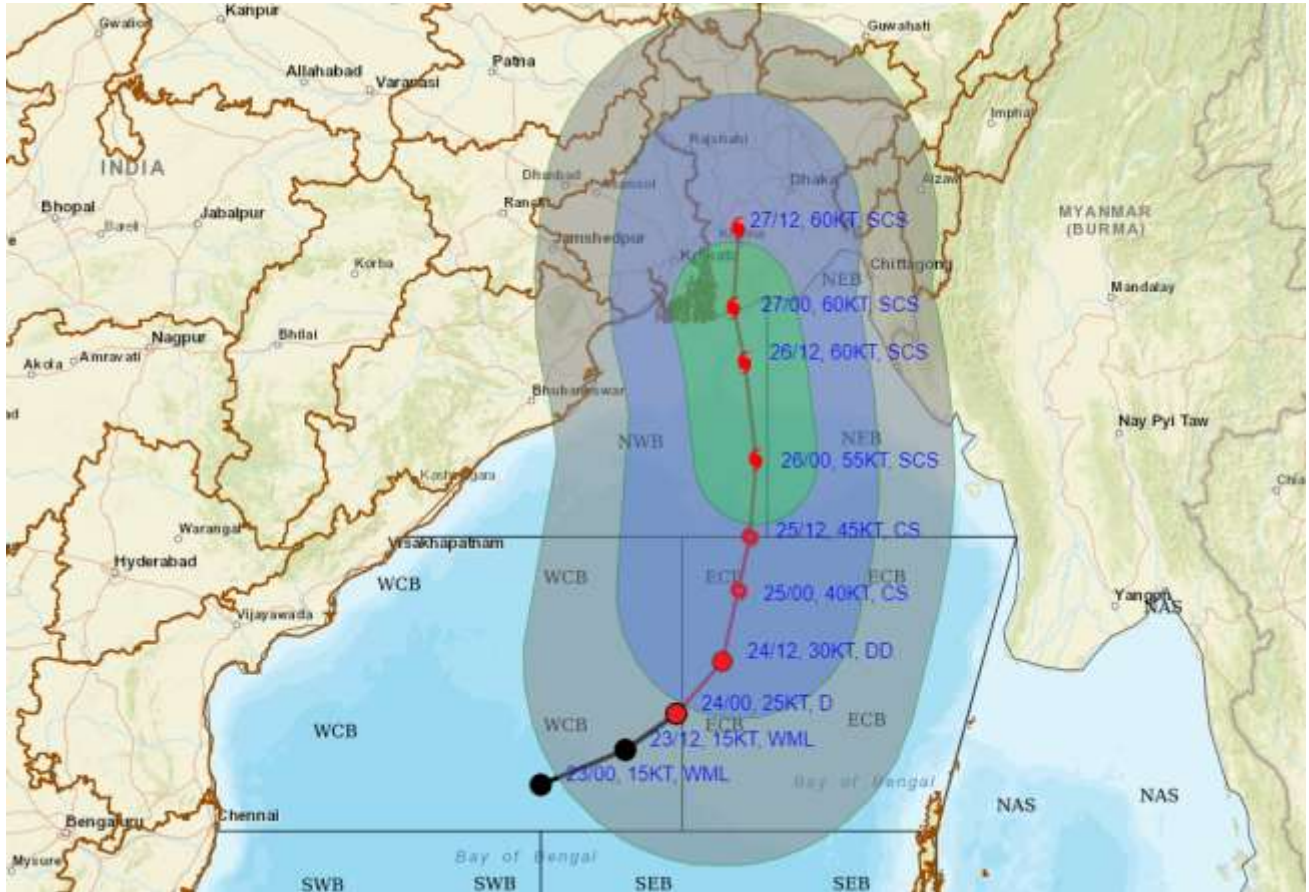
OBSERVED TRACK

FORECAST TRACK

CONE OF UNCERTAINTY



FORECAST TRACK ALONGWITH QUADRANT WIND DISTRIBUTION IN ASSOCIATION WITH DEPRESSION OVER CENTRAL BAY OF BENGAL BASED ON 0000 UTC (0530 IST) OF 24TH MAY 2024.



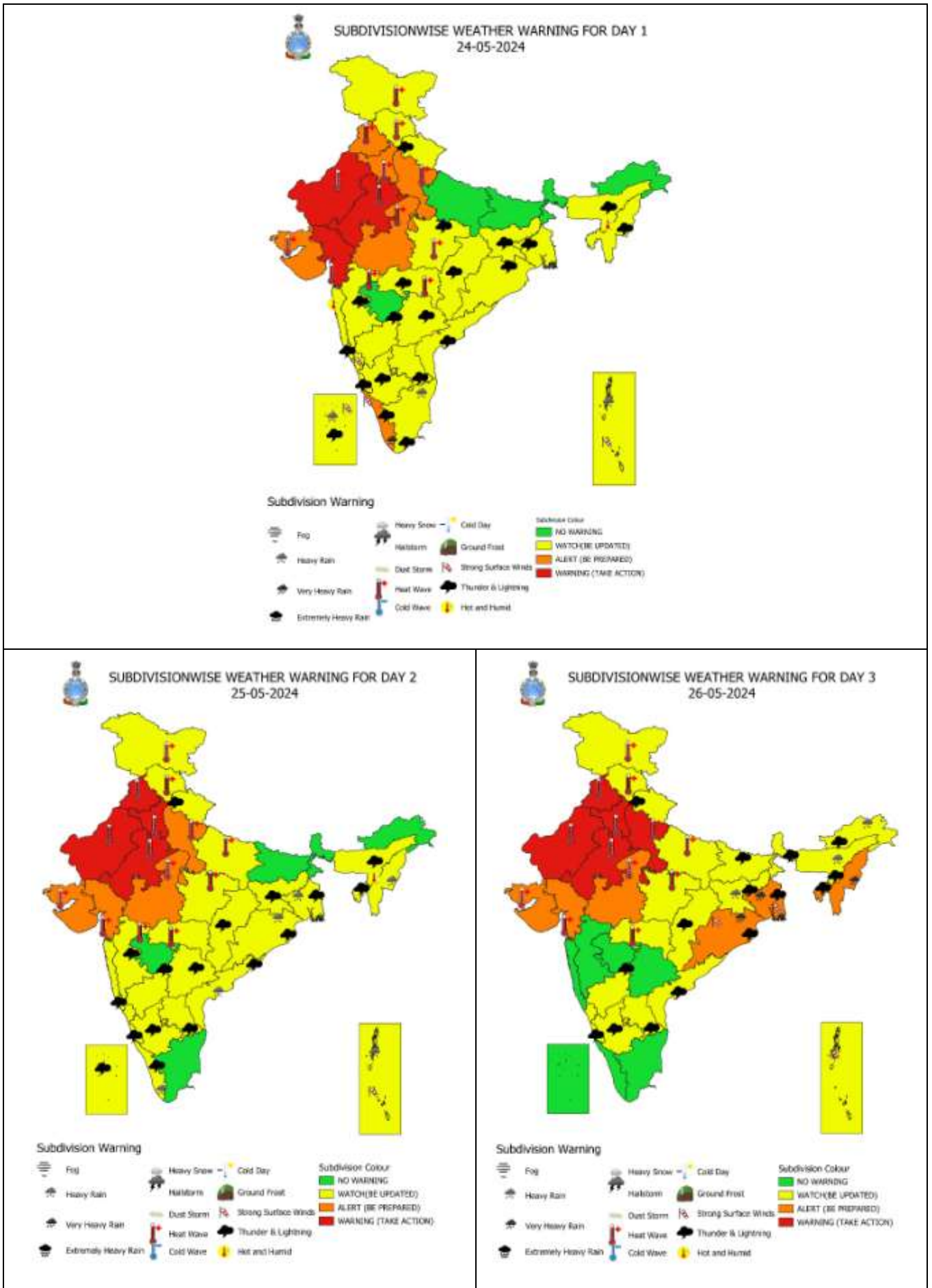
DATE/TIME IN UTC
 IST=UTC + 0530
 L: LOW PRESSURE AREA
 WML: WELL MARKED LOW PRESSURE AREA
 D: DEPRESSION (17-27 KT)
 DD: DEEP DEPRESSION (28-33 KT)
 CS: CYCLONIC STORM (34-47 KT)
 SCS: SEVERE CYCLONIC STORM (48-63KT)
 VSCS: VERY SEVERE CYCLONIC STORM (64-89 KT)
 ESCS: EXTREMELY SEVERE CYCLONIC STORM (90-119 KT)
 SuCS: SUPER CYCLONIC STORM (\geq 120 KT)

● LESS THAN 34 KT
 ◐ 34-47 KT
 ● \geq 48 KT
 — OBSERVED TRACK
 — FORECAST TRACK
 ◐ CONE OF UNCERTAINTY
 AREA OF MAXIMUM SUSTAINED WIND SPEED:
 ◐ 28-33 KT (52-61 KMPH)
 ◐ 34-49 KT (62-91 KMPH)
 ◐ 50-63 KT (92-117 KMPH)
 ◐ \geq 64 KT (\geq 118 KMPH)

IMPACT OVER THE SEA

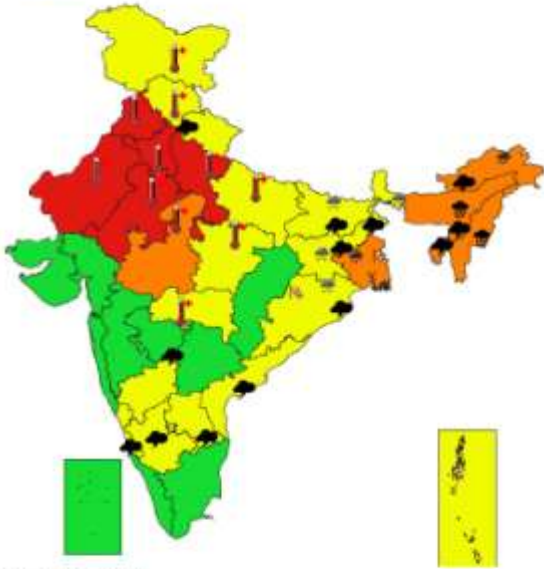
MSW (knot/kmph)	Impact	Action
28-33 (52-61)	Very rough seas	Total suspension of fishing operations
34-49 (62-91)	High to very high seas	Total suspension of fishing operations
50-63 (92-117)	Very high seas	Total suspension of fishing operations
\geq 64 (\geq 118)	Phenomenal	Total suspension of fishing operations

Heavy Rainfall Warning Graphics





SUBDIVISIONWISE WEATHER WARNING FOR DAY 4
27-05-2024

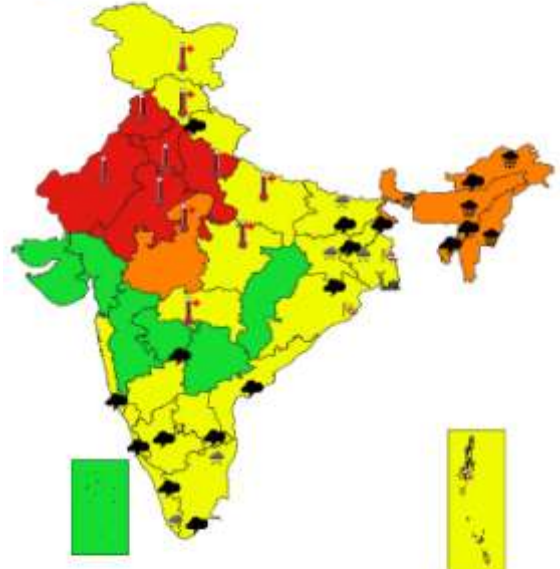


Subdivision Warning

- | | | | |
|----------------------|------------|----------------------|---------------------------|
| Fog | Heavy Snow | Cold Day | Subdivision Colour |
| Heavy Rain | Hailstorm | Ground Frost | NO WARNING |
| Very Heavy Rain | Dust Storm | Strong Surface Winds | WATCH (BE UPDATED) |
| Extremely Heavy Rain | Heat Wave | Thunder & Lightning | ALERT (BE PREPARED) |
| | Cold Wave | Hot and Humid | WARNING (TAKE ACTION) |



SUBDIVISIONWISE WEATHER WARNING FOR DAY 5
28-05-2024



Subdivision Warning

- | | | | |
|----------------------|------------|----------------------|---------------------------|
| Fog | Heavy Snow | Cold Day | Subdivision Colour |
| Heavy Rain | Hailstorm | Ground Frost | NO WARNING |
| Very Heavy Rain | Dust Storm | Strong Surface Winds | WATCH (BE UPDATED) |
| Extremely Heavy Rain | Heat Wave | Thunder & Lightning | ALERT (BE PREPARED) |
| | Cold Wave | Hot and Humid | WARNING (TAKE ACTION) |

Fishermen Warning Graphics



	Squally WX with wind speed 35-45 kmph gusting to 55 kmph
	Squally WX with wind speed 45-55 kmph gusting to 65 kmph
	Squally wind with speed 45-55 kmph gusting to 65 kmph
	Squally wind with speed 50-60 kmph gusting to 70 kmph
	CS with Gale wind speed 60-90 kmph gusting to 110 kmph
	SCS with Gale wind speed 90-120 kmph gusting to 135 kmph

Fishermen are advised not to venture into the marked areas.