



**India Meteorological Department
(Ministry of Earth Sciences)**

NATIONAL BULLETIN NO. 5 (BOB/06/2024)

TIME OF ISSUE: 0215 HOURS IST

DATED: 23.10.2024

FROM: INDIA METEOROLOGICAL DEPARTMENT (FAX NO. 24643965/24699216/24623220)

**TO: CONTROL ROOM, NDM, MINISTRY OF HOME AFFAIRS (FAX.NO. 23093750)
CONTROL ROOM NDMA (FAX.NO. 26701729)
CABINET SECRETARIAT (FAX.NO.23012284, 23018638)
PS TO HON'BLE MINISTER FOR S & T AND EARTH SCIENCES (FAX NO.23316745)
SECRETARY, MOES (FAX NO. 24629777)
H.Q. (INTEGRATED DEFENCE STAFF AND CDS) (FAX NO. 23005137/23005147)
DIRECTOR GENERAL, DOORDARSHAN (23385843)
DIRECTOR GENERAL, AIR (23421105, 23421219)
PIB MOES (FAX NO. 23389042)
UNI (FAX NO. 23355841)
D.G. NATIONAL DISASTER RESPONSE FORCE (NDRF) (FAX NO. 26105912, 2436 3260)
DIRECTOR, PUNCTUALITY, INDIAN RAILWAYS (FAX NO. 23388503)
CHIEF SECRETARY, ODISHA (FAX NO. 0674-2536660)
CHIEF SECRETARY, WEST BENGAL (FAX NO. 033-22144328)
CHIEF SECRETARY, ANDAMAN & NICOBAR ISLANDS (FAX NO. 03192-232656)
CHIEF SECRETARY, TAMIL NADU (FAX NO. 044-25672304)
CHIEF SECRETARY, ANDHRA PRADESH (FAX NO. 0863-2441029)
CHIEF SECRETARY, PUDUCHERRY (FAX NO. 0413-2334145)**

Subject: Deep Depression over Eastcentral Bay of Bengal (Cyclone Alert for Odisha and West Bengal coasts: **Yellow Message)**

The deep depression over Eastcentral Bay of Bengal moved west-northwestwards with a speed of 3 kmph during past 6 hours, and lay centred at 2330 hrs IST of yesterday, the 22nd October, over the same region near latitude 15.7° N and longitude 90.7°E, about 670 km southeast of Paradip (Odisha), 720 km south-southeast of Sagar Island (West Bengal) and 700 km south-southeast of Khepupara (Bangladesh).

It is very likely to move west-northwestwards and intensify into a cyclonic storm during next 12 hours over eastcentral Bay of Bengal. Thereafter, moving northwestwards, it is very likely to intensify into a severe cyclonic storm over northwest Bay of Bengal by morning of 24th and cross north Odisha and West Bengal coasts between Puri and Sagar Island during night of 24th to morning of 25th October, 2024 as a severe Cyclonic Storm with a wind speed of 100-110 kmph gusting 120 kmph.

Forecast track and intensity are given in the following table:

Date/Time (IST)	Position (Lat. °N/ Long. °E)	Maximum Sustained Surface Wind Speed (Kmph)	Category Of Cyclonic Disturbance
22.10.24/2330	15.7/90.7	55-65 gusting to 75	Deep Depression
23.10.24/0530	16.1/90.1	60-70 gusting to 80	Cyclonic Storm
23.10.24/1130	16.6/89.5	70-80 gusting to 90	Cyclonic Storm
23.10.24/1730	17.2/89.0	75-85 gusting to 95	Cyclonic Storm
23.10.24/2330	18.0/88.5	80-90 gusting to 100	Cyclonic Storm
24.10.24/1130	19.2/87.9	100-110 gusting to 120	Severe Cyclonic Storm
24.10.24/2330	20.4/87.3	100-110 gusting to 120	Severe Cyclonic Storm
25.10.24/1130	21.2/86.6	80-90 gusting to 100	Cyclonic Storm
25.10.24/2330	21.5/85.4	55-65 gusting to 75	Deep Depression

(i) Rainfall Warning:

- ❖ Light to moderate rainfall at most places with **heavy rainfall (07-11 cm)** at isolated places over Andaman Islands on 23rd October.
- ❖ Light to moderate rainfall at most places with **heavy rainfall (07-11 cm)** at isolated places is very likely over **Balasore, Bhadrak, Kendrapara, Jagatsingpur, Puri and Khorda**, districts of Odisha on 23rd Oct. & **heavy to very heavy rainfall** at a few places and **extremely heavy rainfall (≥ 21 cm)** at isolated places over **Baleswar, Mayurbhanj, Bhadrak, Kendrapara, Jagatsingpur Kendujhar, Jajpur, Cuttack and Dhenkanal, Khorda and Puri** districts of Odisha on 24th & 25th October.
- ❖ **Light to moderate rainfall at most places with heavy rainfall** at isolated places is very likely on 23rd October and heavy to very heavy rainfall at a few places with **extremely heavy rainfall** at isolated places over **South & North 24 Parganas, East & West Medinipur, Jhargram, Howrah, Hooghly, Kolkata and Bankura** districts of Gangetic West Bengal on 24th & 25th October.
- ❖ Light to moderate rainfall at most places is likely over south Jharkhand with **heavy rainfall** at isolated places on 24th and **heavy to very heavy rainfall** at isolated places on 25th October.

(ii) Wind Warning:

Eastcentral Bay of Bengal: Squally wind speed reaching 50-60 kmph gusting to 70 kmph is prevailing and likely to increase becoming 70-90 kmph gusting to 100 kmph from 23rd evening till 24th morning.

Adjoining areas of Westcentral Bay of Bengal: Squally wind speed reaching 40-50 kmph gusting to 60 kmph is very likely to commence from early hours of 23rd October, 70-80 kmph gusting to 90 kmph from 23rd morning to 24th afternoon.

Northwest Bay of Bengal: Squally wind speed reaching 40-50 kmph gusting to 60 kmph is very likely to commence from 23rd morning. It would gradually increase becoming gale wind speed reaching 70-90 kmph gusting to 100 kmph from 23rd night to 24th morning and 100-110 kmph gusting to 120 kmph from 24th Oct evening to 25th Oct morning and decrease gradually thereafter.

Adjoining areas of northeast Bay of Bengal: Squally wind speed reaching 40-50 kmph gusting to 60 kmph is very likely to commence from 23rd night, becoming 50-60 kmph gusting to 70 kmph from 24th till 25th morning and decrease gradually thereafter.

Along & off Odisha-west Bengal coasts: Squally wind speed reaching 40-50 gusting to 60 kmph is very likely to commence from 23rd Oct evening. It would gradually increase becoming

gale wind speed reaching 60-70 kmph gusting to 80 kmph from 24th morning and reaching 100-110 kmph gusting to 120 kmph from 24th night till 25th Oct morning and decrease gradually thereafter.

(iii) Sea Condition:

Eastcentral Bay of Bengal: Sea condition is likely to be **Rough to Very Rough** during early hour of 23rd October, becoming **very rough to high from 23rd morning till 24th October morning**.

Adjoining areas of Westcentral Bay of Bengal: Sea condition is likely to be **Rough to Very Rough** on 23rd and very rough to high on 24th October.

Northwest Bay of Bengal: Sea condition is likely to be **Rough to Very Rough from 23rd morning** and would become **High to Very High** from 23rd night till 25th morning and improve gradually thereafter.

Adjoining areas of northeast Bay of Bengal: Sea condition is likely to be **Rough to Very Rough** from 23rd night till 25th morning and improve gradually thereafter.

Along & off Odisha-west Bengal coasts: Sea condition is likely to be **Rough to Very Rough** from 23rd evening and would become **High to Very High** from 24th October morning to 25th Oct forenoon and improve gradually thereafter.

(iv) Fishermen Warning:

Fishermen are advised not to venture into

- Eastcentral Bay of Bengal during 23rd to 24th October.
- **Adjoining areas of Westcentral Bay of Bengal on 23rd and 24th Oct.**
- **North Bay of Bengal** and along & off Odisha, West Bengal and Bangladesh coasts during 23rd to 25th October.

(v) Storm surge warning:

Storm surge of about 1-2 meter height above astronomical tide is likely to inundate low lying areas of Kendrapara, Bhadrak, Balasore, East Medinipur districts during the time of landfall.

(vi) Impact Expected over districts of Odisha (Baleswar, Bhadrak, Kendrapara, Jagatsinghpur, Puri, Khorda, Mayurbhanj, Kendujhar, Jajpur, Cuttack, Dhenkanal) and West Bengal (South & North 24 Parganas, East & West Medinipur, Jhargram, Howrah, Hooghly, Kolkata, & Bankura)

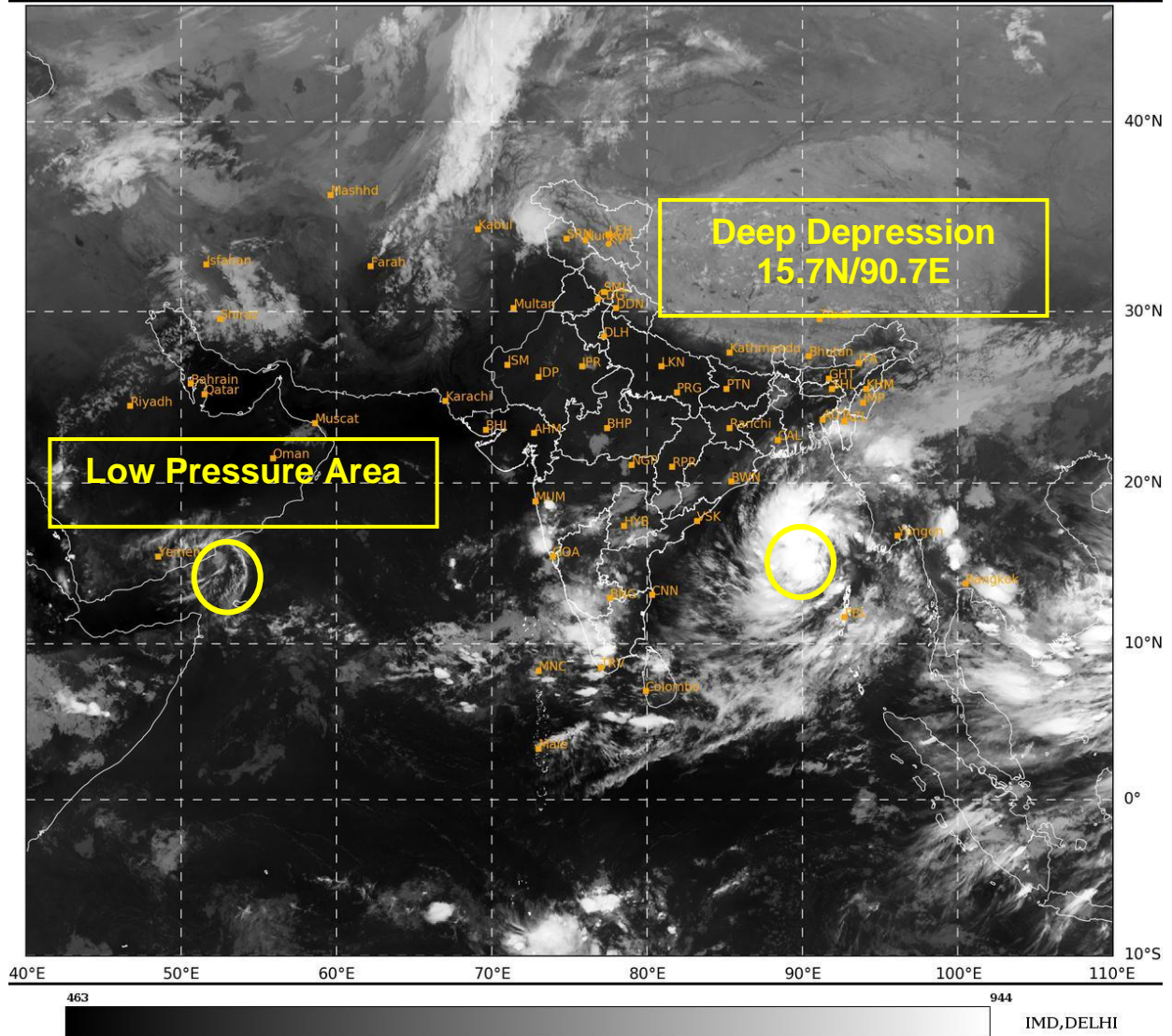
- Major damage to thatched houses/ huts. Roof tops may blow off. Unattached metal sheets may fly.
- Breaking of tree branches and uprooting of trees.
- Damage to power and communication lines.
- Major damage to Kutcha and some damage to Pucca roads. Flooding of escape routes.
- Possibilities of damage to vulnerable structure.
- Major damage to banana and papaya trees. Large dead limbs blown from trees.
- Damage to horticulture and standing crops due to inundation and wind.
- Damage to embankments/ salt pans.
- Localized Flooding of roads, water logging in low lying areas and closure of underpasses mainly in urban areas of the above region.

- Occasional reduction in visibility due to heavy rainfall.
 - Disruption of traffic in major cities and roadways due to water logging in roads and poor visibility due to heavy rain leading to increased travel time and incidents
 - Localized Landslides/Mudslides/landslips/mud slips/land sinks/mud sinks.
 - Likely disruption of marine and inland water transportation like small boats and trawlers.
 - It may lead to riverine flooding in some river catchments (for riverine flooding please visit Webpage of Central Water Commission)
- ❖ **Action Suggested for districts of Odisha (Baleswar, Bhadrak, Kendrapara, Jagatsinghpur, Puri, Khorda, Mayurbhanj, Kendujhar, Jajpur, Cuttack, Dhenkanal) and West Bengal (South & North 24 Parganas, East & West Medinipur, Jhargram, Howrah, Hooghly, Kolkata & Bankura)**
- Total suspension of fishing operations during 23rd to 25th Oct over Central and North Bay of Bengal.
 - Fishermen are advised not to venture into
 - ✓ Eastcentral Bay of Bengal during 23rd to 24th October.
 - ✓ **Adjoining areas of Westcentral Bay of Bengal on 23rd and 24th Oct.**
 - ✓ **North Bay of Bengal** and along & off Odisha, West Bengal and Bangladesh coasts during 23rd to 25th October morning.
 - Movement in motor boats unsafe
 - Coastal hutment dwellers to be moved to safer places.
 - People in affected areas to remain indoors.
 - Judicious regulation of onshore/offshore, Port and maritime activities including shipping.
 - Judicious regulation of tourism activities in coastal areas.
 - Judicious regulation of surface transports including railways and roadways.
 - Check for traffic congestion on your route before leaving for your destination.
 - Follow any traffic advisories that are issued in this regard.
 - Avoid going to areas that face the water logging problems often.
 - Avoid staying in vulnerable structure.

Next bulletin will be issued at 0830 hours IST of today, the 23rd October, 2024.

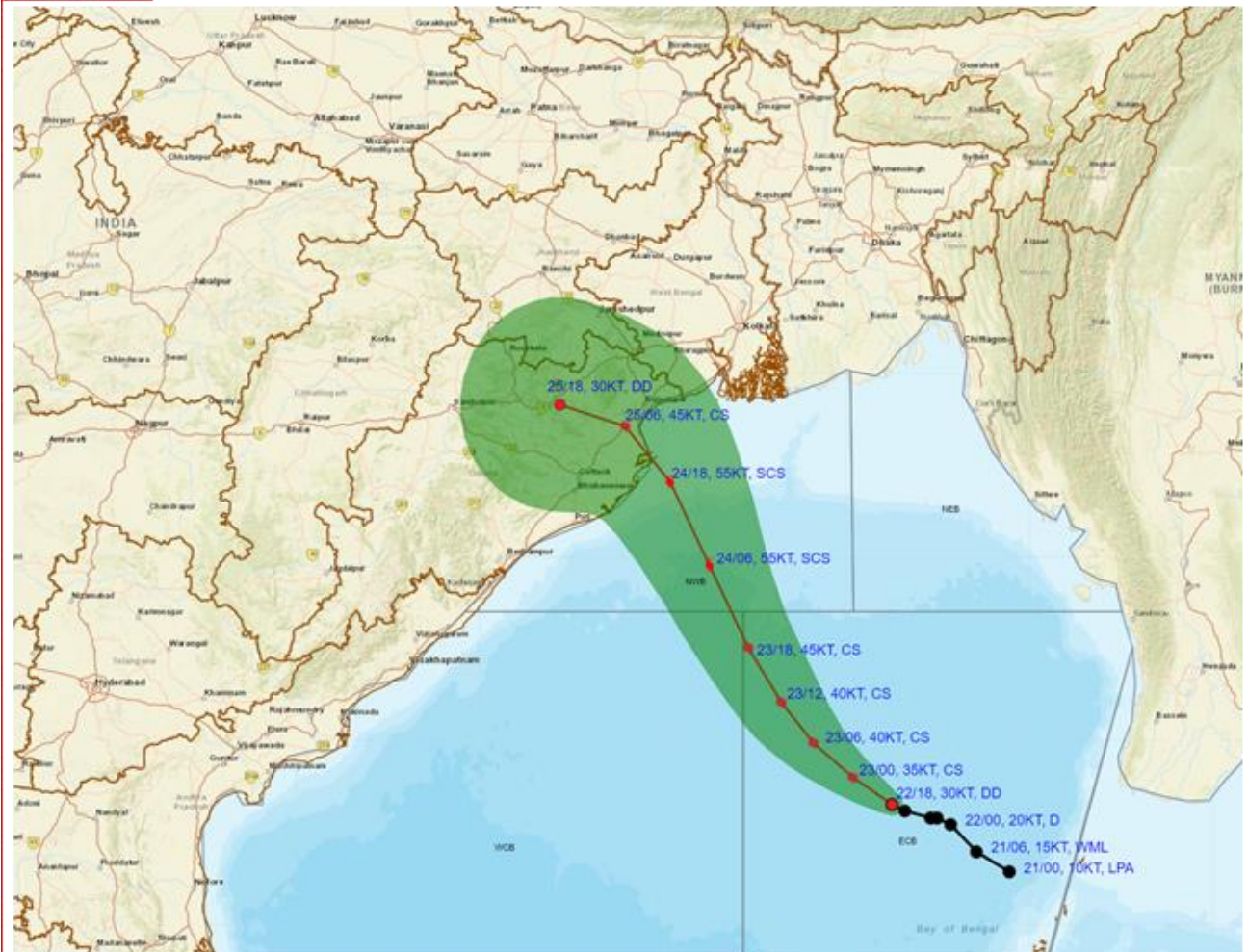
(M. T. Bushair)
Scientist-C, RSMC & IMD, New Delhi

Copy to: ACWC Kolkata/ACWC Chennai/CWC Bhubaneswar/CWC Vishakhapatnam/Meteorological Centre Port Blair





OBSERVED AND FORECAST TRACK ALONGWITH CONE OF UNCERTAINTY OF DEEP DEPRESSION OVER EASTCENTRAL BAY OF BENGAL BASED ON 1800 UTC (2330 Hrs. IST) OF 22ND OCTOBER 2024

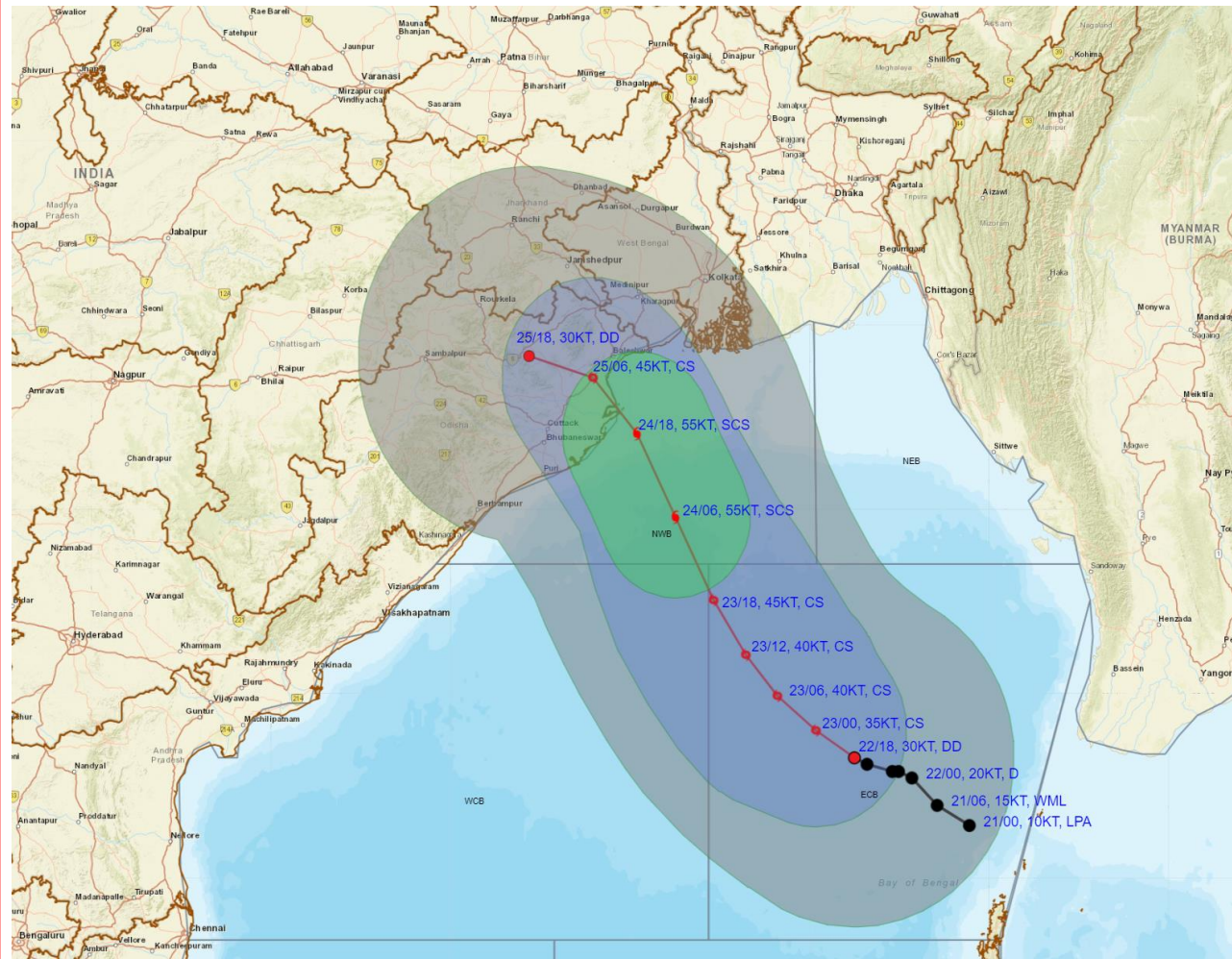


DATE/TIME	: IN UTC
IST	: UTC + 0530
KT	: NAUTICAL MILE S/HOUR = 1.85 KM/HOUR
LPA	: LOW PRESSURE AREA
WML	: WELL MARKED LOW PRESSURE AREA
D	: DEPRESSION (17-27 KT)
DD	: DEEP DEPRESSION (28-33 KT)
CS	: CYCLONIC STORM (34-47 KT)
SCS	: SEVERE CYCLONIC STORM (48-63 KT)
VSCS	: VERY SEVERE CYCLONIC STORM (64-89 KT)
ESCS	: EXTREMELY SEVERE CYCLONIC STORM (90-119 KT)
SuCS	: SUPER CYCLONIC STORM (≥120 KT)

- LESS THAN 34 KT
- 34-47 KT
- ≥ 48 KT
- OBSERVED TRACK
- FORECAST TRACK
- CONE OF UNCERTAINTY



OBSERVED AND FORECAST TRACK ALONGWITH QUADRANT WIND DISTRIBUTION OF DEEP DEPRESSION OVER EASTCENTRAL BAY OF BENGAL BASED ON 1800 UTC (2330 Hrs. IST) OF 22ND OCTOBER 2024

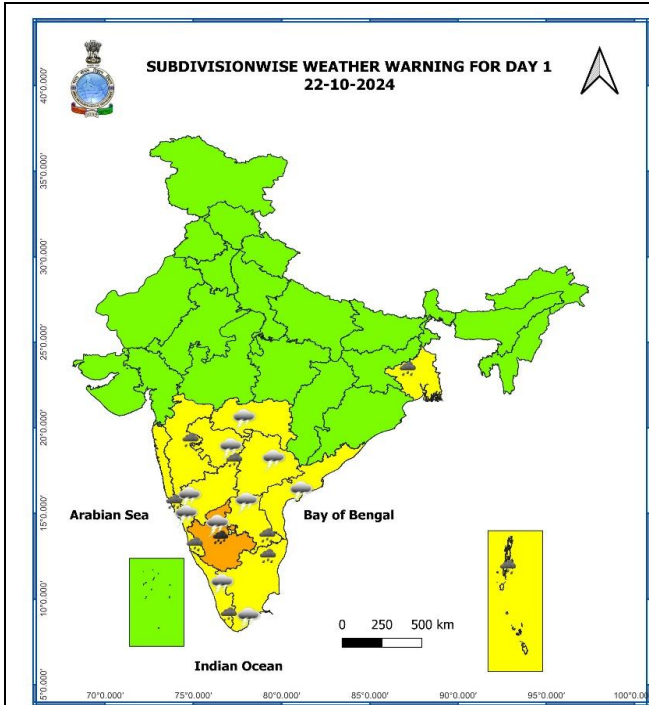


DATE/TIME : IN UTC
 IST : UTC + 0530
 KT : NAUTICAL MILE S/HOUR = 1.85 KM/HOUR
 LPA : LOW PRESSURE AREA
 WML : WELL MARKED LOW PRESSURE AREA
 D : DEPRESSION (17-27 KT)
 DD : DEEP DEPRESSION (28-33 KT)
 CS : CYCLONIC STORM (34-47 KT)
 SCS : SEVERE CYCLONIC STORM (48-63 KT)
 VSCS : VERY SEVERE CYCLONIC STORM (64-89 KT)
 ESCS : EXTREMELY SEVERE CYCLONIC STORM (90-119 KT)
 SuCS : SUPER CYCLONIC STORM (≥ 120 KT)

● LESS THAN 34 KT
 ○ 34-47 KT
 ○ ≥ 48 KT
 — OBSERVED TRACK
 — FORECAST TRACK
 — CONE OF UNCERTAINTY
 AREA OF MAXIMUM SUSTAINED WIND SPEED:
 ■ 28-33 KT (52-61 KMPH)
 ■ 34-49 KT (62-91 KMPH)
 ■ 50-63 KT (92-117 KMPH)
 ■ ≥ 64 KT (≥ 118 KMPH)

IMPACT OVER THE SEA

MSW (knot/kmph)	Impact	Action
28-33 (52-61)	Very rough seas	Total suspension of fishing operations
34-49 (62-91)	High to very high seas	Total suspension of fishing operations
50-63 (92-117)	Very high seas	Total suspension of fishing operations
≥ 64 (≥ 118)	Phenomenal	Total suspension of fishing operations



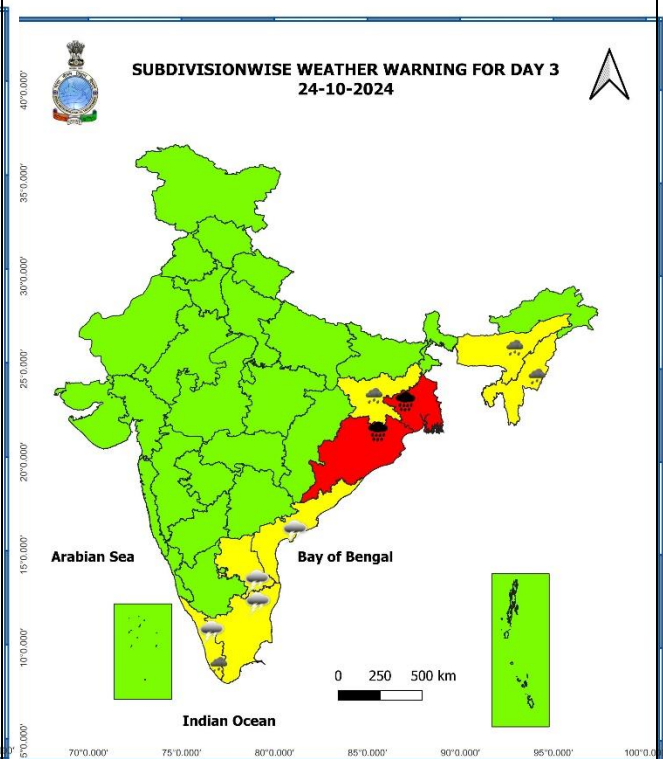
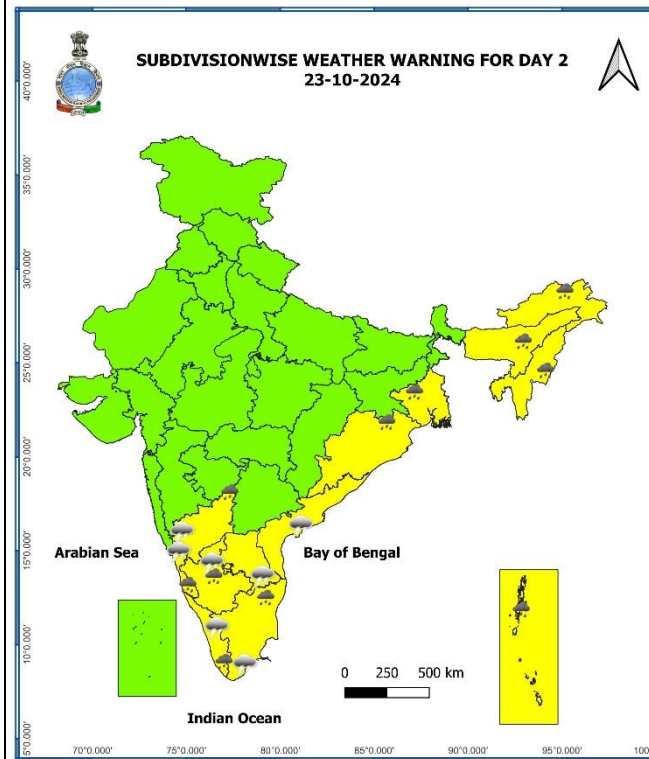
- Heavy Rain
- Very Heavy Rain
- Extremely Heavy Rain

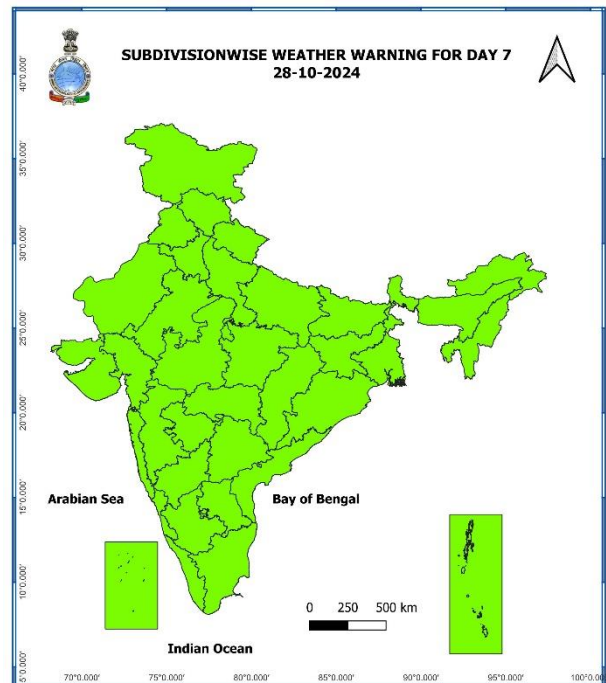
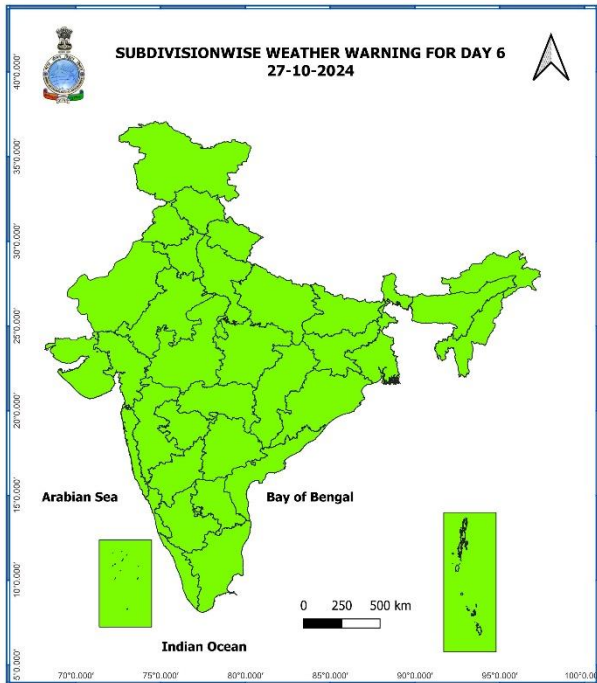
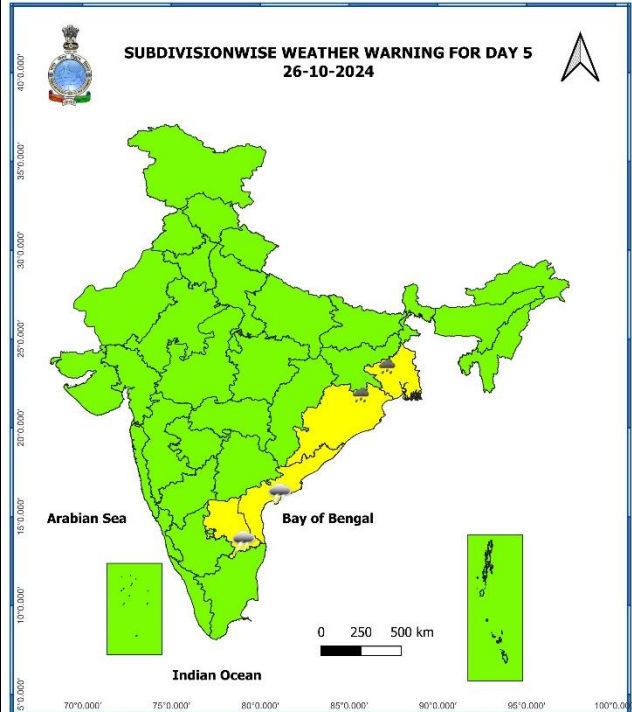
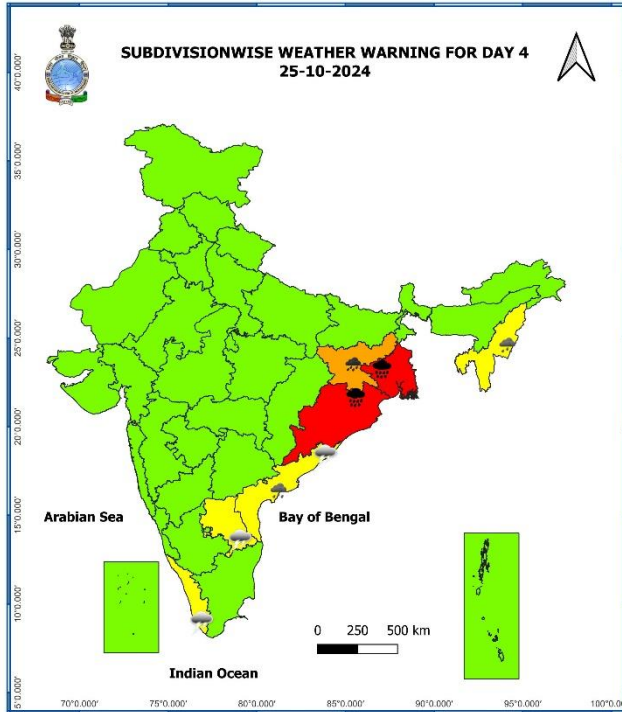
COLOUR CODED WARNING

- No Warning (No Action)
- Watch (Be Aware)
- Alert (Be Prepared To Take Action)
- Warning (Take Action)

Probabilistic Forecast

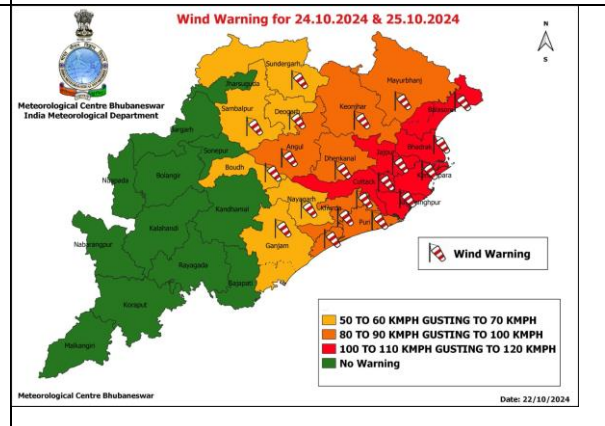
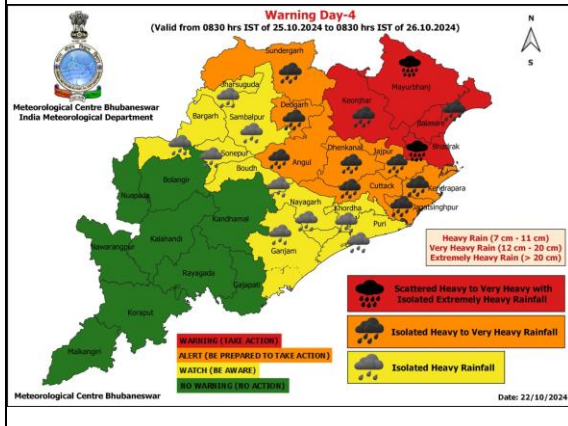
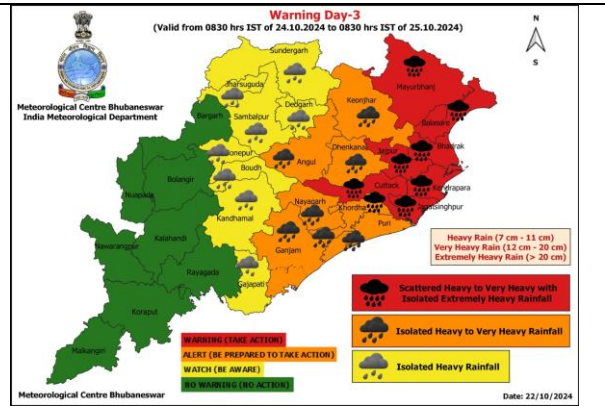
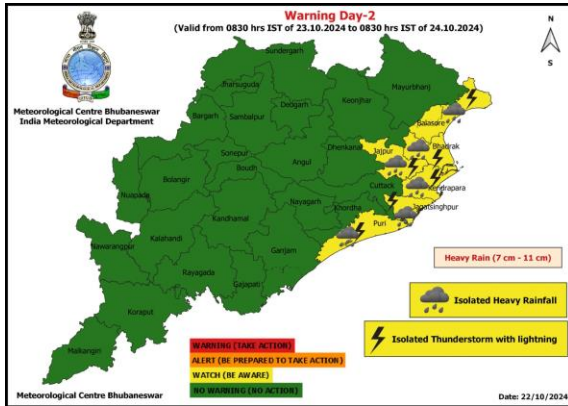
Terms	Probability of Occurrence (%)
Unlikely	< 25
Likely	25 - 50
Very Likely	50 - 75
Most Likely	> 75



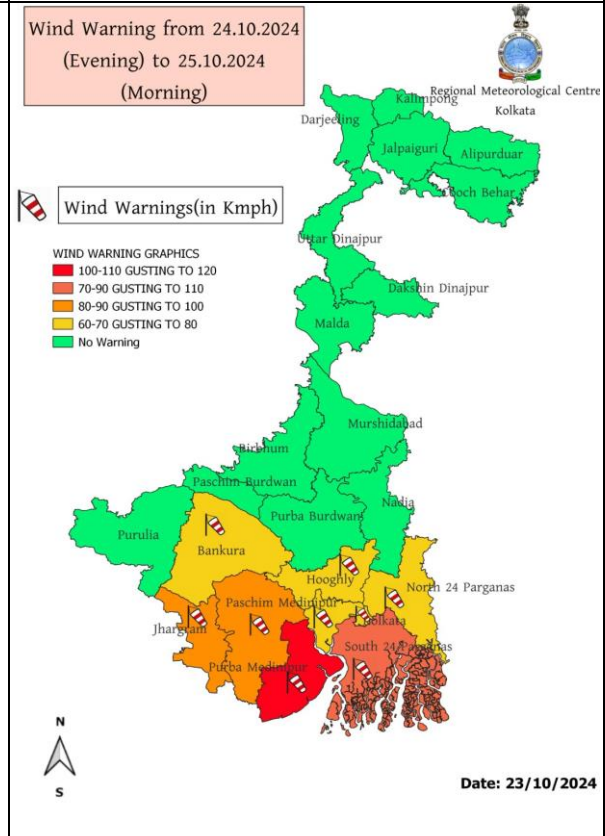
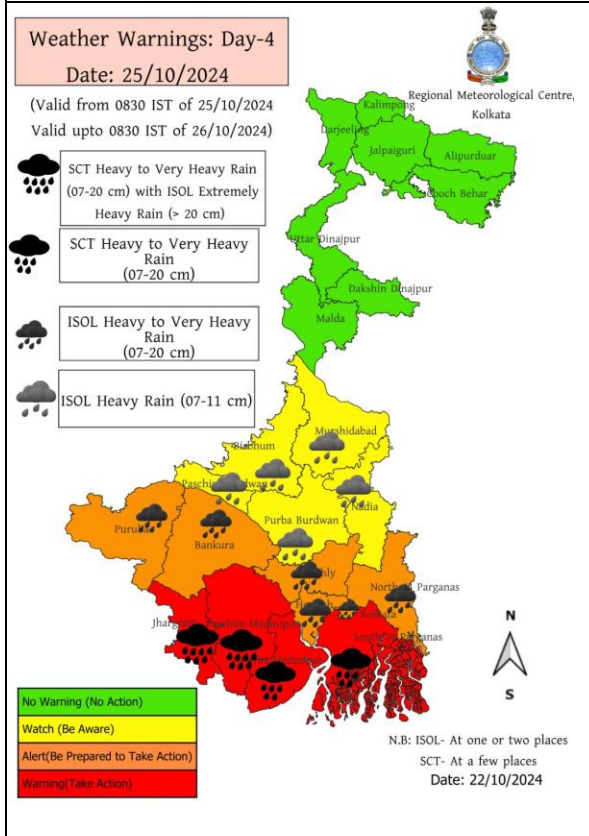
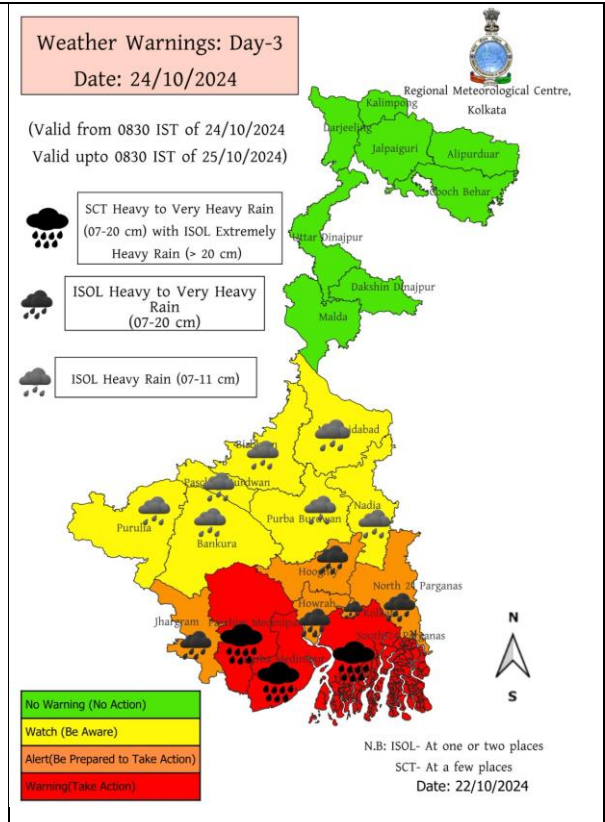
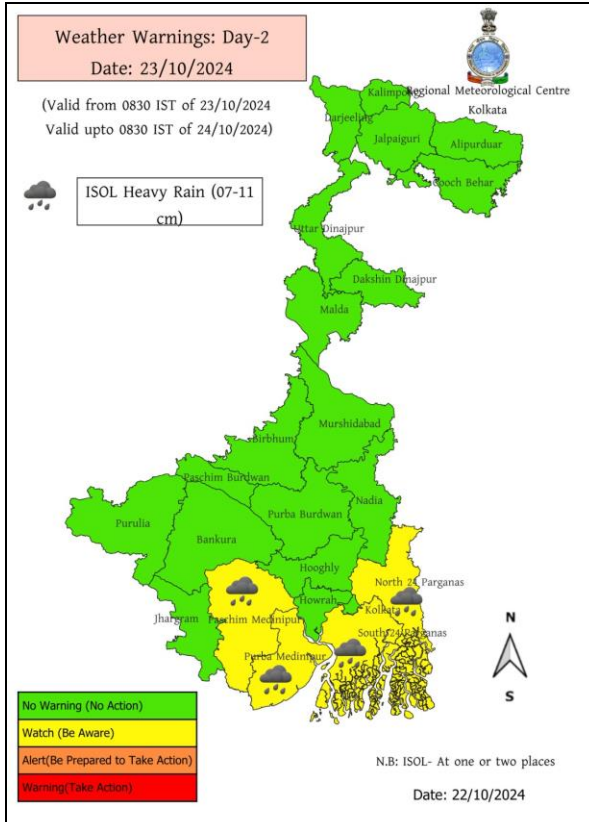


- Action may be taken based on **ORANGE AND RED** COLOUR warnings.
- Vulnerable regions likely urban and hilly areas action may be initiated for heavy rainfall warning.
- As the lead period increases forecast accuracy decreases.

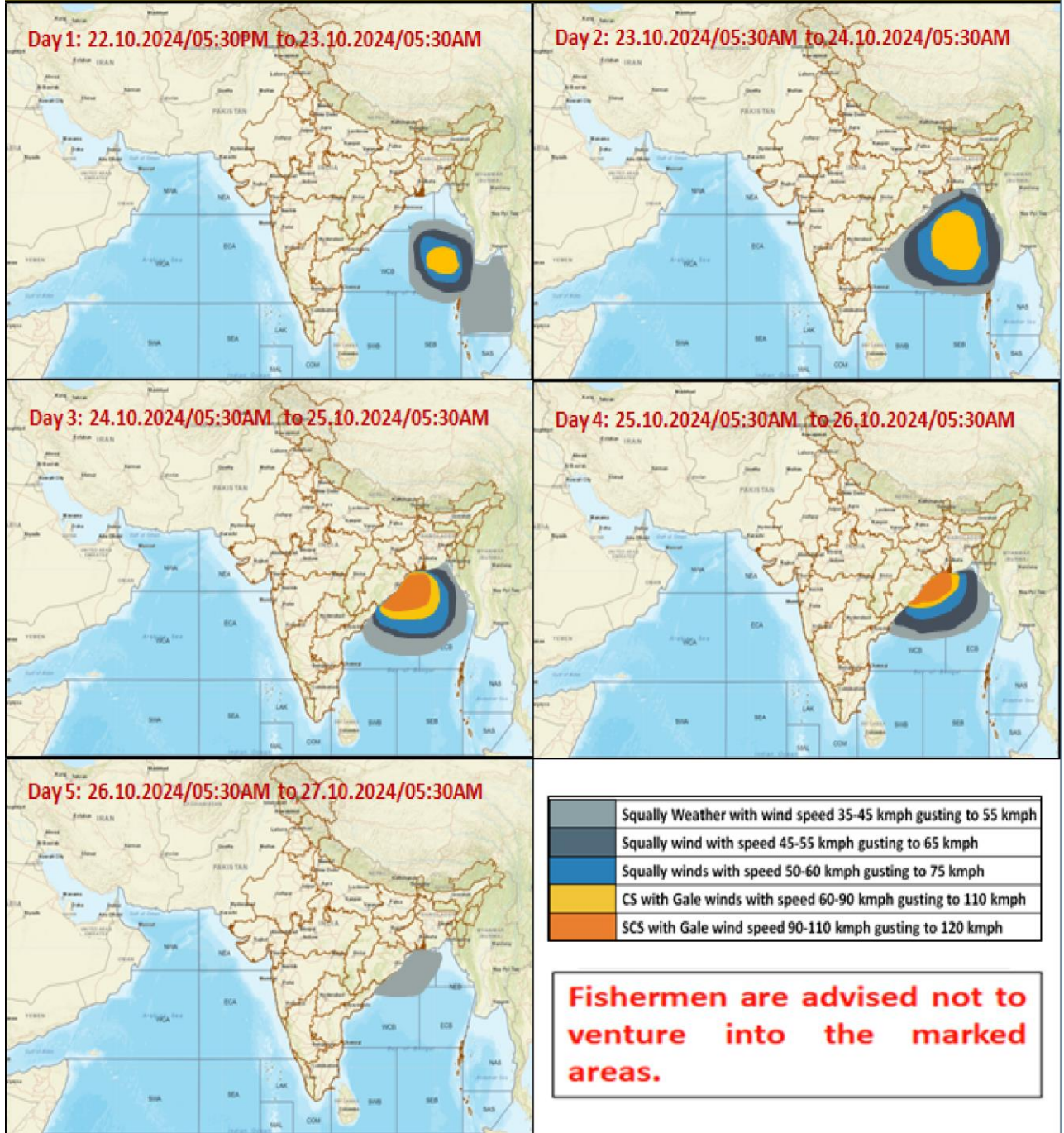
District-wise Warning of Odisha



District-wise Warning of West Bengal



Fishermen Warning Graphics



Storm Surge warning graphics

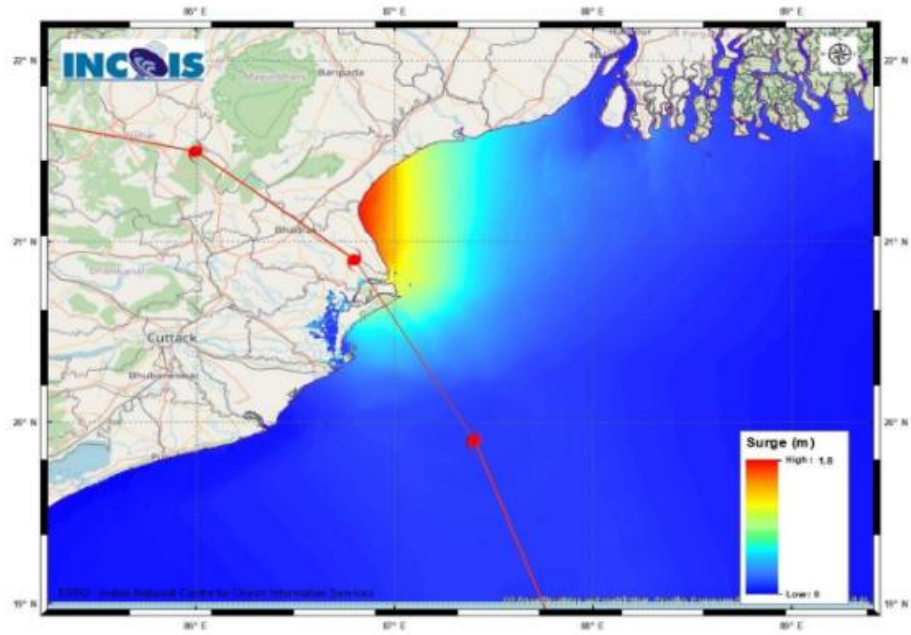


Figure: Storm Surge Map