



**India Meteorological Department
(Ministry of Earth Sciences)**

NATIONAL BULLETIN NO.: 23 (BOB/05/2024)

TIME OF ISSUE: 0730 HOURS IST

DATED: 18.09.2024

**FROM: INDIA METEOROLOGICAL DEPARTMENT (FAX NO. 24643965/24699216/24623220)
TO: CONTROL ROOM, NDM, MINISTRY OF HOME AFFAIRS (FAX.NO. 23093750)
CONTROL ROOM NDMA (FAX.NO. 26701729)
CABINET SECRETARIAT (FAX.NO.23012284, 23018638)
PS TO HON'BLE MINISTER FOR S & T AND EARTH SCIENCES (FAX NO.23316745)
SECRETARY, MOES (FAX NO. 24629777)
H.Q. (INTEGRATED DEFENCE STAFF AND CDS) (FAX NO. 23005137/23005147)
DIRECTOR GENERAL, DOORDARSHAN (23385843)
DIRECTOR GENERAL, AIR (23421105, 23421219)
PIB MOES (FAX NO. 23389042)
UNI (FAX NO. 23355841)
D.G. NATIONAL DISASTER RESPONSE FORCE (NDRF) (FAX NO. 26105912, 2436 3260)
DIRECTOR, PUNCTUALITY, INDIAN RAILWAYS (FAX NO. 23388503)
CHIEF SECRETARY, JHARKHAND (FAX NO. 0651-2400255)
CHIEF SECRETARY, BIHAR (FAX NO. 0612-2217085)
CHIEF SECRETARY, WEST BENGAL (FAX NO. 033-22144328)
CHIEF SECRETARY, ODISHA (FAX NO. 0674-2536660)
CHIEF SECRETARY, CHHATTISGARH (FAX NO. 0771-2221206)
CHIEF SECRETARY, UTTAR PRADESH (FAX NO. 0522-2239283)
CHIEF SECRETARY, MADHYA PRADESH (FAX NO. 0755 – 2441076)
CHIEF SECRETARY, RAJASTHAN (FAX NO. 0141-2227114)**

Sub: Well Marked Low Pressure Area over northeast Madhya Pradesh & adjoining southwest Uttar Pradesh

The depression over northeast Madhya Pradesh moved west-northwestwards and weakened into a Well Marked Low Pressure Area over northeast Madhya Pradesh and adjoining southwest Uttar Pradesh at 0530 hours IST of today, the 18th September 2024.

It is likely to move further nearly west-northwestwards across northeast Madhya Pradesh and southwest Uttar Pradesh and gradually weaken into a low pressure area during next 24 hours.

Warnings:

(i) Rainfall warning

Madhya Pradesh: Light to moderate rainfall at most places with **heavy to very heavy rainfall** at isolated places is likely over north Madhya Pradesh on 18th September.

Uttar Pradesh: Light to moderate rainfall at many places with **heavy to very rainfall** at isolated places over Southwest Uttar Pradesh and isolated **heavy rainfall** over southeast Uttar Pradesh on 18th September.

East Rajasthan: Light to moderate rainfall at many places with **heavy rainfall** at isolated places over northeast Rajasthan on 18th September.

Spatial rainfall distribution: Isolated: <25%, A few: 26-50%, Many: 51-75%, Most: 76-100%

Rainfall amount (mm): Heavy rain: 64.5 – 115.5, Very heavy rain: 115.6 – 204.4, Extremely heavy rain: 204.5 or more.

(ii) Wind warning:

Strong wind speed reaching 25-35 kmph gusting to 45 kmph over northeast Madhya Pradesh and adjoining southwest Uttar Pradesh during next 24 hours.

Impact Expected (North Madhya Pradesh, Southwest Uttar Pradesh and East Rajasthan due to heavy rainfall and strong winds)

- ✓ Localized Flooding of roads, water logging in low lying areas and closure of underpasses mainly in urban areas of the above region.
- ✓ Occasional reduction in visibility due to heavy rainfall.
- ✓ Disruption of traffic in major cities and roadways due to water logging in roads and poor visibility due to heavy rain leading to increased travel time and incidents
- ✓ Likely disruption of inland water transportation like small boats.
- ✓ Minor damage to kutchha roads.
- ✓ Possibilities of damage to vulnerable structure.
- ✓ Localized Landslides/Mudslides/landslips/mud slips/land sinks/mud sinks.
- ✓ Damage to horticulture and standing crops in some areas due to inundation and wind.
- ✓ It may lead to riverine flooding in some river catchments (for riverine flooding please visit Web page of CWC)

Action Suggested (North Madhya Pradesh, southwest Uttar Pradesh and East Rajasthan due to heavy rainfall and strong winds)

- ✓ Judicious regulation of surface transports including railways.
- ✓ Check for traffic congestion on your route before leaving for your destination.
- ✓ Follow any traffic advisories that are issued in this regard.
- ✓ Avoid going to areas that face the water logging problems often.
- ✓ Avoid staying in vulnerable structure.

Agromet advisories for Heavy Rainfall likely over various parts of the country

- ✓ Provide mechanical support to horticultural crops & staking to vegetables.
- ✓ Keep the harvested produce at safer places.

Significant amount of rainfall (from 0830 hours IST of 17th September to 0530 hours IST of 18th September) (in cm) is placed at Annexure-1.

This is last update in association with this system. However, regular weather bulletins will continue from National Weather Forecasting Centre and respective Regional Meteorological Centres and Meteorological Centres in association with the Well Marked Low Pressure Area over northeast Madhya Pradesh & adjoining southwest Uttar Pradesh.

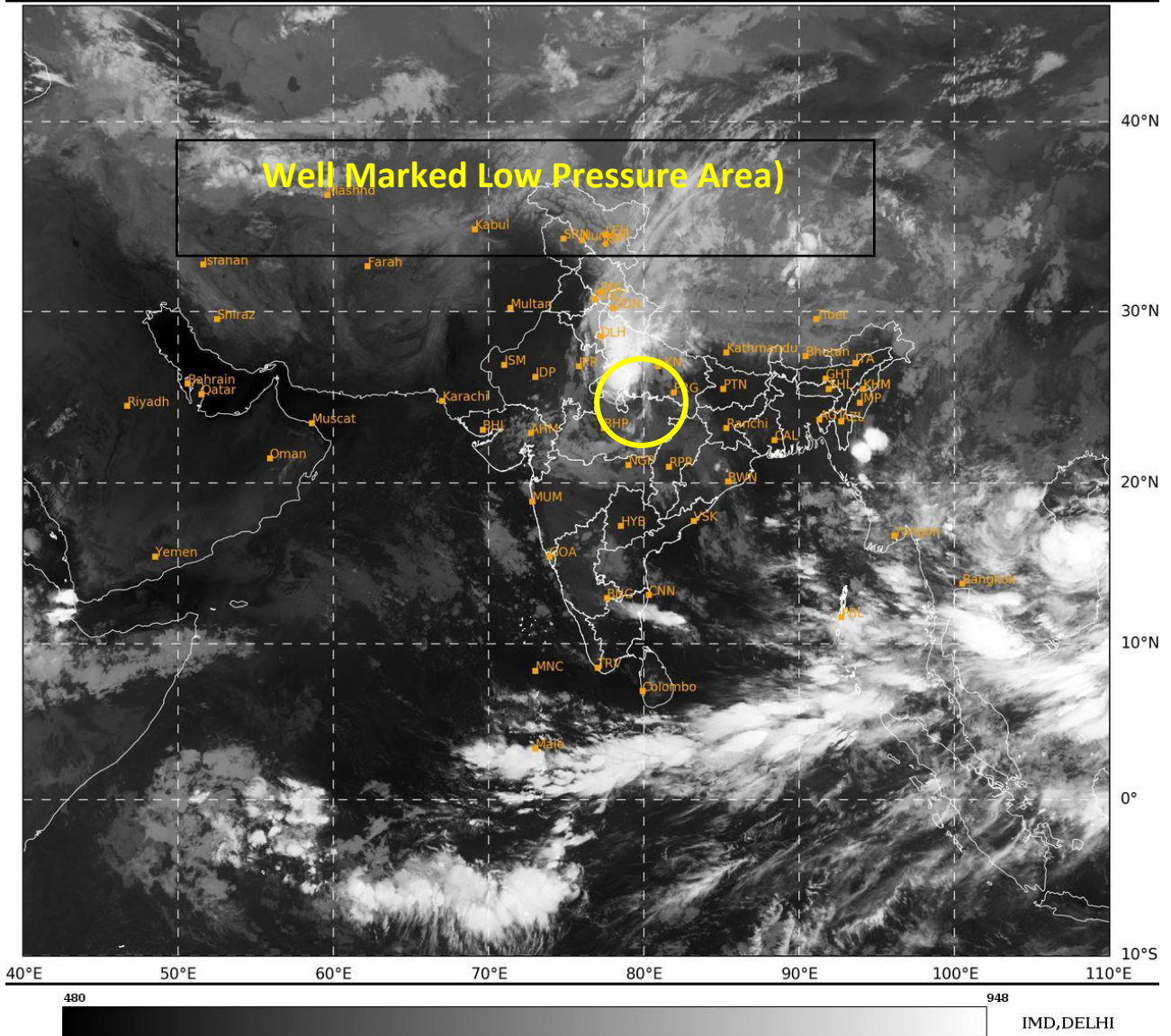
(Akhil Srivastava)

Scientist-D, RSMC, New Delhi

Copy to: CRS, Pune/RMC Chennai /RMC Kolkata/MC Ranchi/MC Patna/MC Raipur/MC Bhopal/MC Lucknow

Spatial rainfall distribution: Isolated: <25%, A few: 26-50%, Many: 51-75%, Most: 76-100%

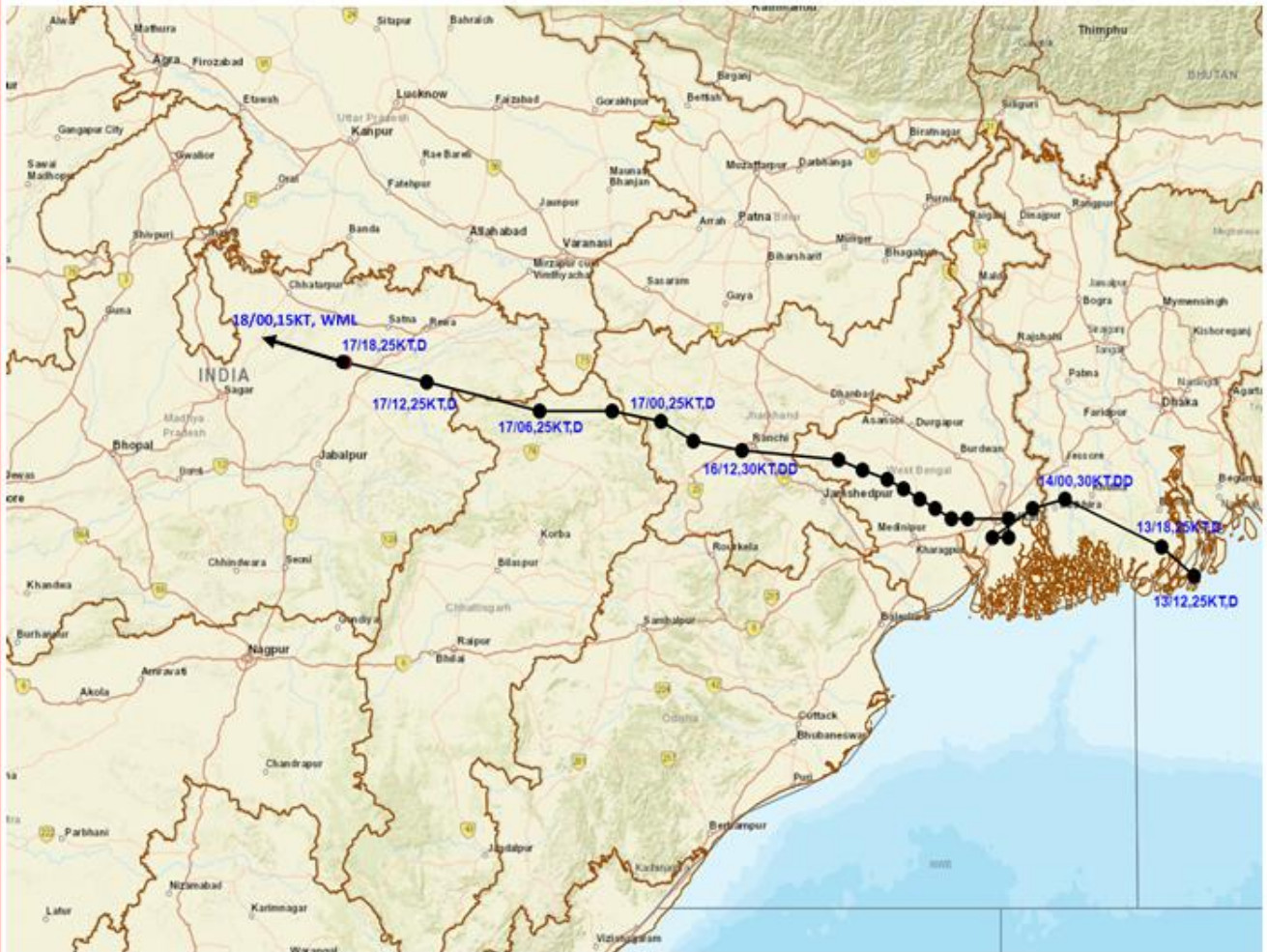
Rainfall amount (mm): Heavy rain: 64.5 – 115.5, Very heavy rain: 115.6 – 204.4, Extremely heavy rain: 204.5 or more.



Spatial rainfall distribution: Isolated: <25%, A few: 26-50%, Many: 51-75%, Most: 76-100%
Rainfall amount (mm): Heavy rain: 64.5 – 115.5, Very heavy rain: 115.6 – 204.4, Extremely heavy rain: 204.5 or more.



OBSERVED TRACK OF DEEP DEPRESSION OVER NORTHEAST BAY OF BENGAL DURING 13TH - 18TH SEPTEMBER 2024.

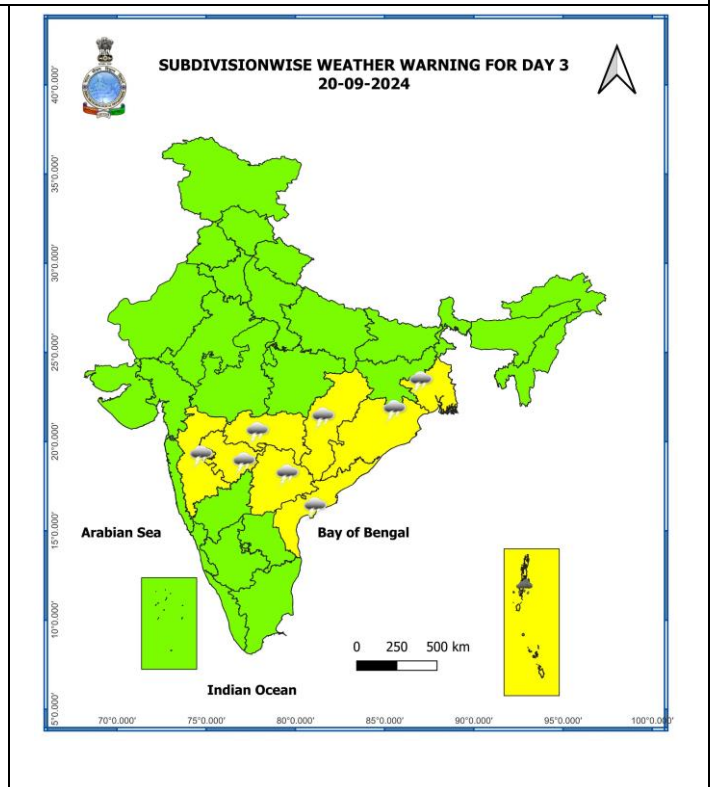
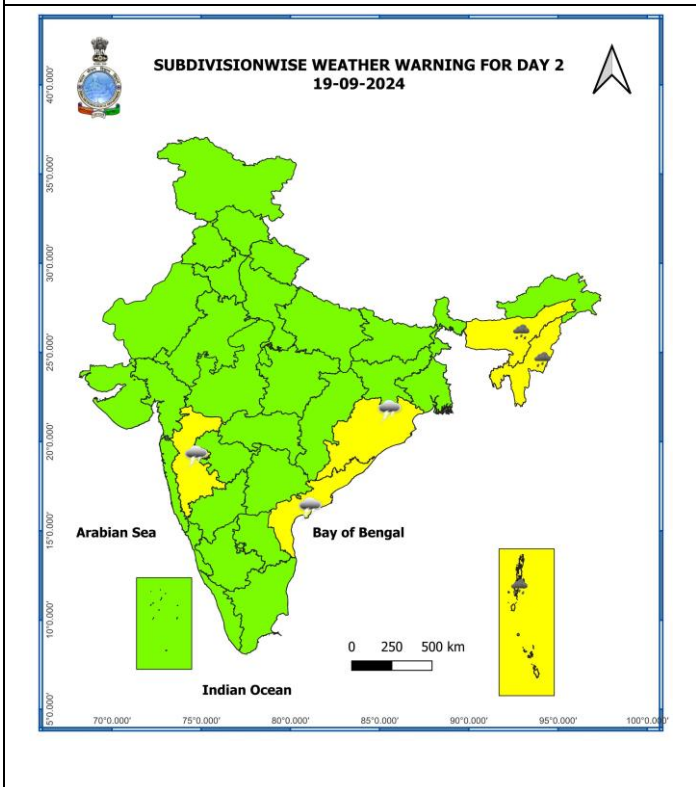
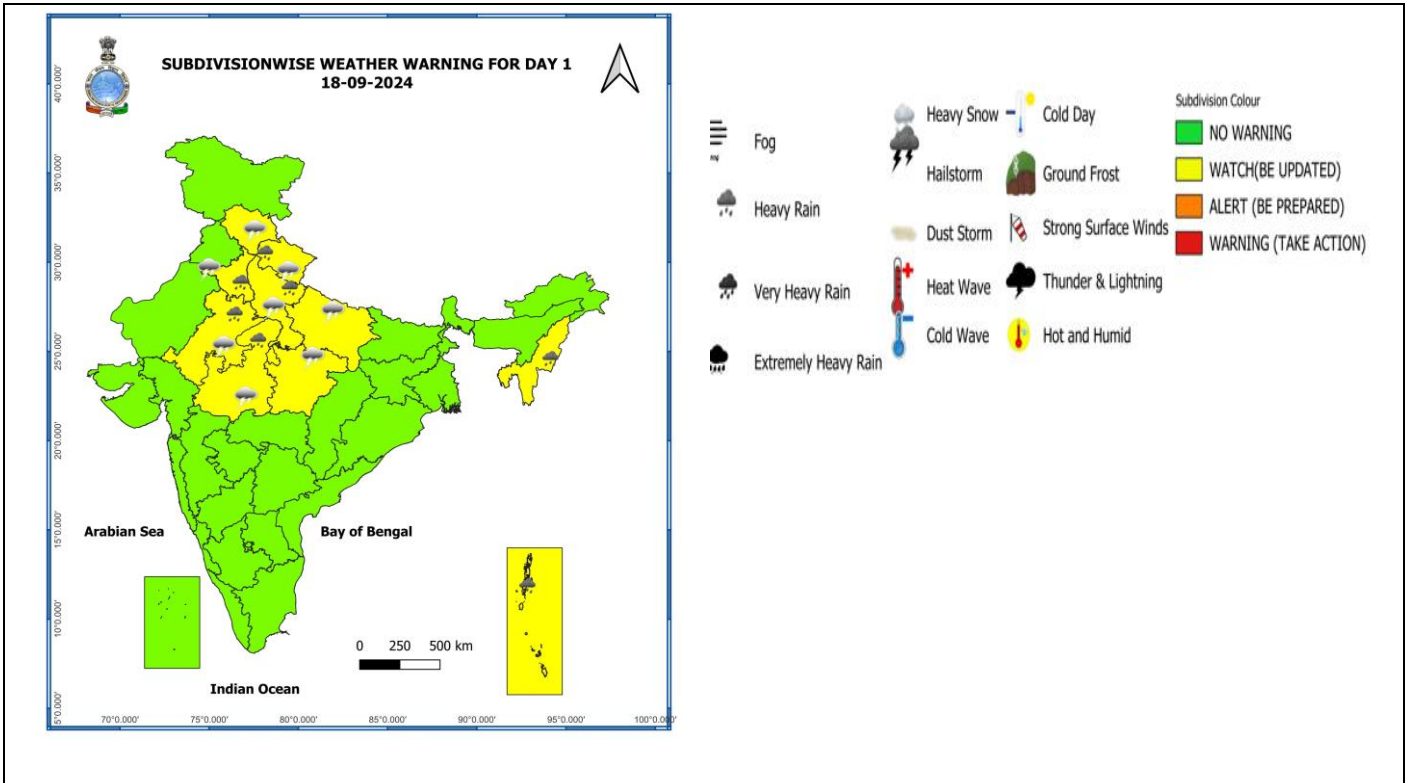


DATE/TIME IN UTC
 IST=UTC + 0530
 L: LOW PRESSURE AREA
 WML: WELL MARKED LOW PRESSURE AREA
 D: DEPRESSION (17-27 KT)
 DD: DEEP DEPRESSION (28-33 KT)
 CS: CYCLONIC STORM (34-47 KT)
 SCS: SEVERE CYCLONIC STORM (48-63KT)
 VSCS: VERY SEVERE CYCLONIC STORM (64-89 KT)
 ESCS: EXTREMELY SEVERE CYCLONIC STORM (90-119 KT)
 SuCS: SUPER CYCLONIC STORM (\geq 120 KT)

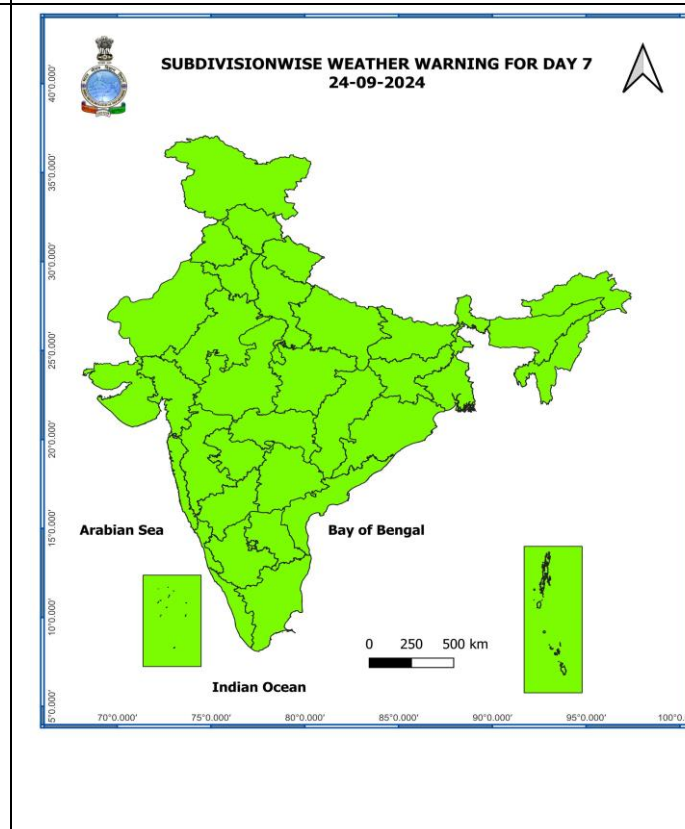
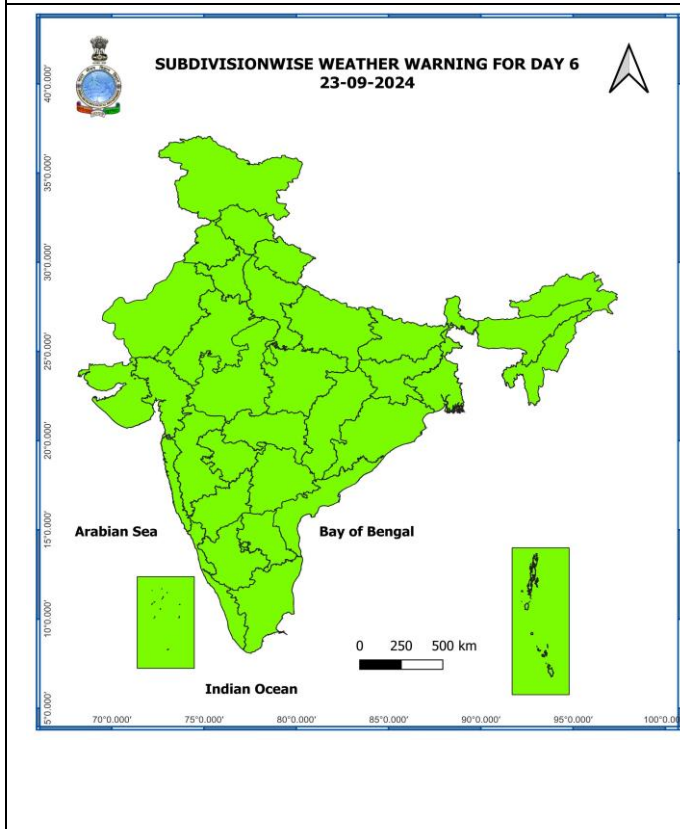
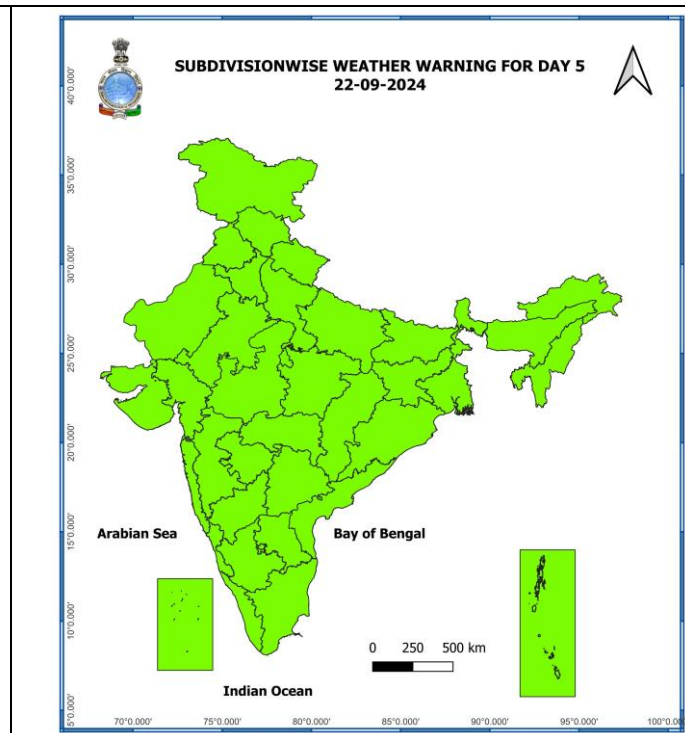
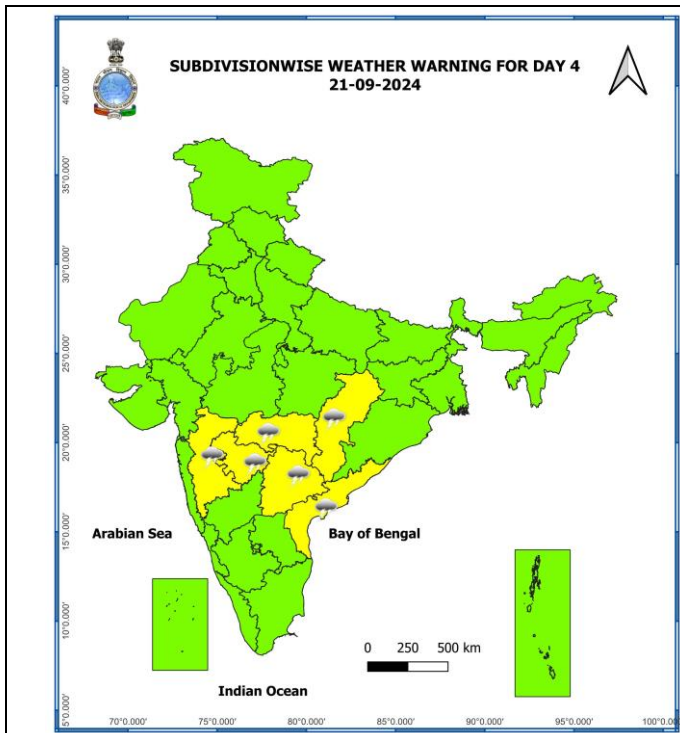
- LESS THAN 34 KT
- 34-47 KT
- \geq 48 KT
- OBSERVED TRACK
- FORECAST TRACK
- CONE OF UNCERTAINTY

Spatial rainfall distribution: Isolated: <25%, A few: 26-50%, Many: 51-75%, Most: 76-100%
 Rainfall amount (mm): Heavy rain: 64.5 – 115.5, Very heavy rain: 115.6 – 204.4, Extremely heavy rain: 204.5 or more.

Weather Warning Graphics



Spatial rainfall distribution: Isolated: <25%, A few: 26-50%, Many: 51-75%, Most: 76-100%
Rainfall amount (mm): Heavy rain: 64.5 – 115.5, Very heavy rain: 115.6 – 204.4, Extremely heavy rain: 204.5 or more.



- Action may be taken based on **ORANGE AND RED COLOUR** warnings.
- Vulnerable regions likely urban and hilly areas action may be initiated for heavy rainfall warning.
- As the lead period increases forecast accuracy decreases.

Spatial rainfall distribution: Isolated: <25%, A few: 26-50%, Many: 51-75%, Most: 76-100%
Rainfall amount (mm): Heavy rain: 64.5 – 115.5, Very heavy rain: 115.6 – 204.4, Extremely heavy rain: 204.5 or more.

Annexure-1

Significant amount of rainfall (from 0830 hours IST of 17th September to 0530 hours IST of 18th September) (in cm):

East Uttar Pradesh: Kanpur IAF-10; Allahabad-6; Babatpur-4; Varavasi-3;

West Uttar Pradesh: Jhansi-5;

East Madhya Pradesh: Satana-6; Sagar -3; Jabalpur-2;

Jharkhand: Ranchi-3; Daltongang-1;

West Madhya Pradesh: Gwalior-3; Gwalior IAF-2;

Odisha: Bhubaneshwar-2;

Spatial rainfall distribution: Isolated: <25%, A few: 26-50%, Many: 51-75%, Most: 76-100%

Rainfall amount (mm): Heavy rain: 64.5 – 115.5, Very heavy rain: 115.6 – 204.4, Extremely heavy rain: 204.5 or more.