



**REGIONAL SPECIALISED METEOROLOGICAL CENTRE-TROPICAL CYCLONES, NEW DELHI
SPECIAL TROPICAL WEATHER OUTLOOK**

DEMS-RSMC TROPICAL CYCLONES NEW DELHI DATED 29.08.2024

SPECIAL TROPICAL WEATHER OUTLOOK FOR NORTH INDIAN OCEAN (THE BAY OF BENGAL AND THE ARABIAN SEA) VALID FOR NEXT 168 HOURS ISSUED AT 1000 UTC OF 29.08.2024 BASED ON 0600 UTC OF 29.08.2024.

SUB: (A) DEEP DEPRESSION OVER SAURASHTRA & KACHCHH

(B) LOW PRESSURE AREA OVER CENTRAL AND ADJOINING NORTH BAY OF BENGAL

(I) ARABIAN SEA:

(A) DEEP DEPRESSION OVER SAURASHTRA & KACHCHH

THE DEEP DEPRESSION OVER SAURASHTRA & KACHCHH MOVED SLOWLY WESTWARDS WITH A SPEED OF 3 KMPH DURING PAST 6 HOURS AND LAY CENTERED AT 1130 HOURS IST OF TODAY, THE 29TH AUGUST, 2024 OVER THE SAME REGION NEAR LATITUDE 23.7°N AND LONGITUDE 69.3 °E, 70 KM NORTHWEST OF BHUJ (42364), 60 KM NORTHEAST OF NALIYA (42361) AND 250 KM EAST-SOUTHEAST OF KARACHI (41780).

IT IS LIKELY TO MOVE WEST-SOUTHWESTWARDS, EMERGE INTO NORTHEAST ARABIAN SEA OFF KACHCHH AND ADJOINING SAURASHTRA & PAKISTAN COASTS AND INTENSIFY INTO A CYCLONIC STORM ON 30TH AUGUST. THEREAFTER, IT WOULD CONTINUE TO MOVE NEARLY WEST-SOUTHWESTWARDS OVER NORTHEAST ARABIAN SEA AWAY FROM INDIAN COAST DURING SUBSEQUENT 2 DAYS.

INSAT 3DR IMAGERY, AT 0600 UTC OF 29TH AUGUST SHOWS SCATTERED TO BROKEN LOW AND MEDIUM CLOUDS WITH EMBEDDED INTENSE TO VERY INTENSE CONVECTION OVER KATCHCHH, ADJOINING SOUTH PAKISTAN, SAURASHTRA, NORTHEAST ARABIAN SEA, GULF OF KATCHCHH (MINIMUM CTT MINUS 93⁰C) AND MODERATE TO INTENSE CONVECTION LAY OVER WEST GUJARAT.

ASSOCIATED MAXIMUM SUSTAINED WIND SPEED IS 30 KTS GUSTING TO 40 KTS. ESTIMATED CENTRAL PRESSURE IS 992 HPA. AT 0600 UTC, BHUJ REPORTED MEAN SEA LEVEL PRESSURE OF 993.7 HPA WITH PRESSURE CHANGE IN PAST 24 HOURS AS -0.2 HPA.

SEA CONDITION AND ADVISORY FOR FISHERMEN IN ASSOCIATION WITH THE MOVEMENT OF THE SYSTEM OVER SAURASHTRA & KUTCH AND ADJOINING PAKISTAN AND NORTHEAST ARABIAN SEA FROM INDIA TILL 01ST SEPTEMBER:

WIND WARNING:

- SQUALLY WIND SPEED REACHING 45-55 KMPH GUSTING TO 65 KMPH IS LIKELY OVER THE DISTRICTS OF SOUTH GUJARAT REGION AND SAURASHTRA & KUTCH ON 29TH & 30TH AUGUST.
- SQUALLY WIND SPEED REACHING 55-65 KMPH GUSTING TO 75 KMPH IS VERY LIKELY TO PREVAIL ALONG & OFF GUJARAT COASTS & ADJOINING PAKISTAN COASTS AND OVER NORTHEAST & ADJOINING EASTCENTRAL ARABIAN SEA DURING 29TH TO 31ST AUGUST.
- GALE WIND SPEED REACHING 65-75 KMPH GUSTING TO 85 KMPH IS LIKELY TO PREVAIL OVER NORTHEAST ARABIAN SEA OFF GUJARAT AND PAKISTAN COASTS FROM 30TH AUGUST TILL 1ST SEPTEMBER.
- GALE WIND SPEED REACHING 65-75 KMPH GUSTING TO 85 KMPH IS LIKELY TO PREVAIL OVER NORTHWEST AND ADJOINING WESTCENTRAL ARABIAN SEA OFF PAKISTAN AND SOUTHEAST IRAN COASTS FROM 31ST AUGUST TILL 2ND SEPTEMBER.
- STRONG WIND SPEED REACHING 40-50 KMPH GUSTING TO 60 KMPH IS LIKELY TO PREVAIL ALONG AND OFF NORTH MAHARASHTRA COASTS DURING 29TH TO 31ST AUGUST.

SEA CONDITION:

- SQUALLY WEATHER WITH ROUGH TO VERY ROUGH SEA CONDITIONS IS VERY LIKELY TO PREVAIL ALONG & OFF GUJARAT & ADJOINING PAKISTAN AND NORTH MAHARASHTRA COASTS TILL 31ST AUGUST.
- VERY ROUGH TO HIGH SEA CONDITION IS LIKELY TO PREVAIL OVER NORTHEAST & ADJOINING EASTCENTRAL AND ARABIAN SEA OFF GUJARAT AND PAKISTAN COASTS DURING 29TH TO 31ST AUGUST.
- VERY ROUGH TO HIGH SEA CONDITION IS LIKELY TO PREVAIL OVER NORTHWEST AND ADJOINING WESTCENTRAL ARABIAN SEA OFF PAKISTAN AND SOUTHEAST IRAN COASTS FROM 31ST AUGUST TILL 2ND SEPTEMBER.

FISHERMEN WARNING:

- FISHERMEN ARE ADVISED NOT VENTURE INTO
 - NORTHEAST & ADJOINING EASTCENTRAL ARABIAN SEA AND ALONG & OFF GUJARAT & ADJOINING PAKISTAN AND NORTH MAHARASHTRA COASTS TILL 31ST AUGUST.
 - NORTHWEST & ADJOINING WESTCENTRAL ARABIAN SEA AND ALONG & OFF PAKISTAN AND SOUTHEAST IRAN COASTS FROM 31ST AUGUST TILL 2ND SEPTEMBER.

CLOUDS OVER ARABIAN SEA:

SCATTERED TO BROKEN LOW AND MEDIUM CLOUDS WITH EMBEDDED INTENSE TO VERY INTENSE CONVECTION LAY OVER NORTHEAST ARABIAN SEA AND GULF OF KATCHCHH. SCATTERED LOW/MEDIUM CLOUDS WITH EMBEDDED MODERATE TO INTENSE CONVECTION OVER CENTRAL AND SOUTHEAST ARABIAN SEA AND WEAK TO MODERATE CONVECTION LAY OVER REST ARABIAN SEA LAKSHADWEEP ISLANDS & COMORIN AREA.

***PROBABILITY OF CYCLOGENESIS (FORMATION OF DEPRESSION) DURING NEXT 168 HRS OVER ARABIAN SEA:**

24 HOURS	24-48 HOURS	48-72 HOURS	72-96 HOURS	96-120 HOURS	120-144 HOURS	144-168 HOURS
MOD	HIGH	HIGH	-	-	-	-

***NOTE: EVERY 24HR FORECAST IS VALID UPTO 0300 UTC (0830 IST) OF NEXT DAY
(-) INDICATES GENESIS HAS ALREADY OCCURRED.**

(II) BAY OF BENGAL:

(B) LOW PRESSURE AREA OVER CENTRAL AND ADJOINING NORTH BAY OF BENGAL

THE LOW PRESSURE AREA OVER CENTRAL AND ADJOINING NORTH BAY OF BENGAL PERSISTED OVER THE SAME REGION AT 0600 UTC OF TODAY, THE 29TH AUGUST, 2024.

IT IS LIKELY TO MOVE WEST-NORTHWESTWARDS AND BECOME MORE MARKED OVER WESTCENTRAL AND ADJOINING NORTHWEST BAY OF BENGAL BY 30TH AUGUST. THEREAFTER, WHILE MOVING TOWARDS NORTH ANDHRA PRADESH AND ADJOINING SOUTH ODISHA COASTS, IT IS LIKELY TO INTENSIFY INTO A DEPRESSION OVER WESTCENTRAL AND ADJOINING NORTHWEST BAY OF BENGAL DURING SUBSEQUENT 2 DAYS.

SEA CONDITION AND ADVISORY FOR FISHERMEN IN ASSOCIATION WITH THE MOVEMENT OF THE SYSTEM OVER THE BAY OF BENGAL

WIND WARNING:

- SQUALLY WEATHER WITH WIND SPEED REACHING 30-40 KMPH GUSTING TO 50 KMPH IS LIKELY TO PREVAIL OVER WESTCENTRAL AND ADJOINING NORTHWEST BAY OF BENGAL DURING 30TH BECOMING 45-55 KMPH GUSTING TO 65 KMPH 31ST AUGUST.
- SQUALLY WIND SPEED REACHING 45-55 KMPH GUSTING TO 65 KMPH IS LIKELY TO PREVAIL ALONG & OFF NORTH ANDHRA PRADESH & SOUTH ODISHA COASTS ON 31 AUGUST.

SEA CONDITION:

- ROUGH SEA CONDITION IS VERY LIKELY TO PREVAIL OVER WESTCENTRAL AND ADJOINING NORTHWEST BAY OF BENGAL TILL 31ST AUGUST.
- ROUGH SEA CONDITION IS VERY LIKELY TO PREVAIL ALONG & OFF NORTH ANDHRA PRADESH & SOUTH ODISHA COASTS ON 31 AUGUST.

FISHERMEN WARNING:

FISHERMEN ARE ADVISED NOT VENTURE INTO WESTCENTRAL & ADJOINING NORTHWEST BAY OF BENGAL FROM 29TH TILL 31ST AUGUST AND ALONG & OFF SOUTH ODISHA AND NORTH ANDHRA PRADESH COASTS ON 31ST AUGUST.

SCATTERED LOW AND MEDIUM CLOUDS WITH EMBEDDED INTENSE TO VERY INTENSE CONVECTION LAY OVER CENTRAL & SOUTH BAY OF BENGAL, ANDAMAN SEA. SCATTERED LOW TO MEDIUM CLOUDS WITH ISOLATED MODERATE TO INTENSE CONVECTION LAY OVER NORTH EAST BAY OF BENGAL

***PROBABILITY OF CYCLOGENESIS (FORMATION OF DEPRESSION) DURING NEXT 168 HRS:**

24 HOURS	24-48 HOURS	48-72 HOURS	72-96 HOURS	96-120 HOURS	120-144 HOURS	144-168 HOURS
-	LOW	MOD	MOD	-	-	-

***NOTE: EVERY 24HR FORECAST IS VALID UPTO 0300 UTC (0830 IST) OF NEXT DAY**

REMARKS:

THE MADDEN JULIAN OSCILLATION (MJO) INDEX CURRENTLY LIES IN PHASE 4 WITH AMPLITUDE GREATER THAN 1. IT IS LIKELY TO MOVE ACROSS PHASE 4 AND 5 WITH AMPLITUDE REMAINING MORE THAN 1 DURING NEXT 5 DAYS. THE NCICS FORECASTS INDICATE SIGNIFICANT PRESENCE OF CONVECTIVELY COUPLED EQUATORIAL ROSSBY WAVES (ERW) PROPAGATING WESTWARDS STARTING FROM BAY OF BENGAL, CENTRAL INDIA AND CENTRAL ARABIAN SEA DURING NEXT 5 DAYS. THE WESTERLY WINDS (5-7 MPS) ARE LIKELY OVER THE SAME REGION AND STRONG EASTERLIES (5-7 MPS) OVER THE NORTHWESTERN PARTS OF INDIA AND NORTHEAST ARABIAN SEA DURING NEXT FIVE DAYS. THE EASTWARD-MOVING KELVIN WAVES (KW) ARE ALSO LIKELY OVER SOUTHEAST ARABIAN SEA. THESE FEATURES ARE FAVOURABLE FOR ENHANCEMENT OF CONVECTIVE ACTIVITY OVER THE ARABIAN SEA AND ALSO OVER THE BAY OF BENGAL.

VORTICITY AT 850 HPA LEVEL IS AROUND $200 \times 10^{-5} \text{ S}^{-1}$ NEAR THE SYSTEM AREA EXTENDING UPTO 500 HPA. SHEAR TENDENCY IS INCREASING OVER SYSTEM AREA AND DECREASING TOWARDS SOUTH PAKISTAN. THE LOW-LEVEL CONVERGENCE IS ABOUT $15 \times 10^{-5} \text{ S}^{-1}$ TO THE WEST OF SYSTEM AREA. UPPER LEVEL DIVERGENCE IS ABOUT $20 \times 10^{-5} \text{ S}^{-1}$ TO THE WEST OF SYSTEM AREA EXTENDING UPTO NORTHEAST AND ADJOINING EAST CENTRAL ARABIAN SEA. THE WIND SHEAR IS MODERATE (15-20 KNOTS) OVER THE SYSTEM AREA. CURRENTLY, THE DEEP DEPRESSION OVER SAURASHTRA & KACHCHH IS IN A FAVOURABLE ENVIRONMENT WITH GOOD EQUATORWARD AND POLEWARD OUTFLOW, MODERATE WIND SHEAR AND HIGH POSITIVE VORTICITY. UPPER TROPOSPHERIC RIDGE IS PASSING ALONG 25°N IN ASSOCIATION WITH THE ANTICYCLONIC CIRCULATION OVER IRAN. A TROUGH IS EXTENDING UPTO 30°N ALONG 64°E . UNDER THE INFLUENCE OF THESE SYSTEMS, THE SYSTEM HAS BECOME ALMOST STATIONARY. DEEP MEAN LAYER WIND SPEED (200-850 HPA) IS INDICATING VERY SLOW MOVEMENT OF SYSTEM.

MOST OF THE NUMERICAL WEATHER PREDICTION MODELS (IMD GFS, NCEP GFS, GEFS, ECMWF, AND NCUM) INDICATE THAT THE EXISTING DEEP DEPRESSION OVER SAURASHTRA & KACHCHH LIKELY TO MOVE WEST-SOUTHWESTWARDS ACROSS SAURASHTRA & KACHCHH. THERE IS A CONSENSUS AMONG VARIOUS MODELS THAT THE SYSTEM WOULD PERSIST OVER SAURASHTRA & KACHCHH REGION TILL 30TH AUGUST. HOWEVER, THERE IS VARIATION AMONG MODELS WITH RESPECT TO INTENSIFICATION OF SYSTEM WITH NCUM GROUP STILL SHOWING HIGHER INTENSIFICATION UPTO VERY SEVERE CYCLONIC STORM AND ECMWF & GFS GROUP ARE INDICATING PEAK INTENSIFICATION UPTO MARGINAL CYCLONIC STORM ONLY. ECMWF AND NCEP GFS ARE ALSO INDICATING DRY AIR INCURSION INTO THE SYSTEM AREA FROM 29TH/ 1200 UTC ONWARDS. IMD MME IS ALSO INDICATING NEAR WESTWARDS MOVEMENT TOWARDS OMAN COAST AND INTENSIFICATION INTO A MARGINAL CYCLONE AROUND 30TH AUGUST/1200 UTC BEFORE EMERGING INTO NORTHEAST ARABIAN SEA. MOST OF THE MODELS ARE

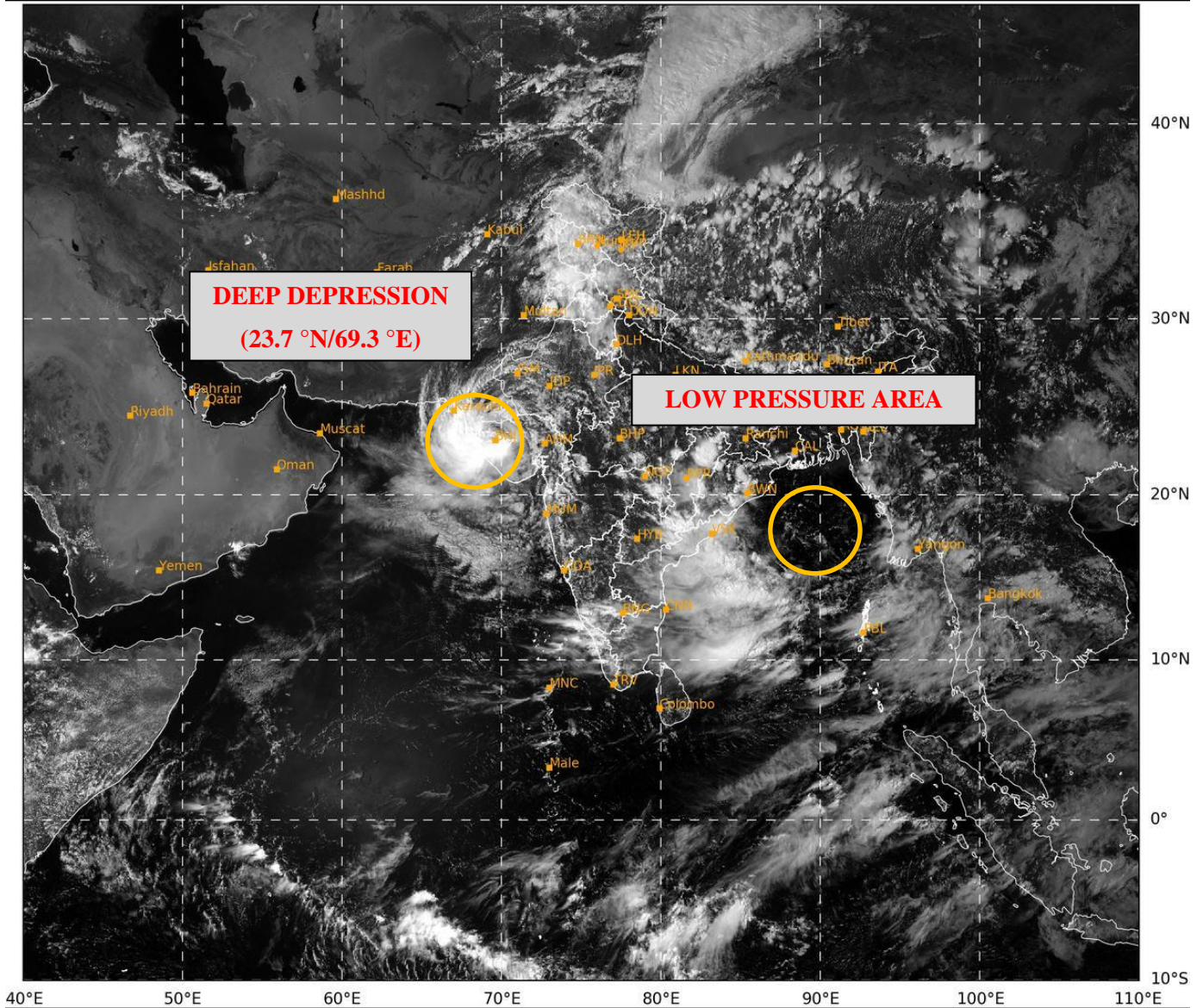
INDICATING THE SYSTEM TO REACH OMAN COAST AS A LOW-PRESSURE AREA.

OVER THE BAY OF BENGAL, MOST OF THE MODELS ARE INDICATING DEVELOPMENT OF LOW-PRESSURE AREA OVER CENTRAL BAY OF BENGAL AROUND 29TH AUGUST WITH WEST-NORTHWESTWARDS MOVEMENT TOWARDS SOUTH ODISHA & ADJOINING NORTH ANDHRA PRADESH COASTS. MODELS ARE ALSO INDICATING INTENSIFICATION OF THE SYSTEM INTO A DEPRESSION AROUND 30TH AUGUST/1ST SEPTEMBER WITH SLIGHT VARIATION IN THE TIMINING. ACCORDINGLY, LOW TO MODERATE PROBABILITY IS ASSIGNED TO FORMATION OF DEPRESSION OVER NORTHWEST & ADJOINING WESTCENTRAL BAY OF BENGAL DURING NEXT 2-3 DAYS.

CONSIDERING ALL THE ABOVE, IT IS INFERRED THAT:

- (1) DEEP DEPRESSION OVER SAURASHTRA & KACHCHH IS LIKELY TO MOVE WEST-SOUTHWESTWARDS, EMERGE INTO NORTHEAST ARABIAN SEA OFF KACHCHH AND ADJOINING SAURASHTRA & PAKISTAN COASTS AND INTENSIFY INTO A CYCLONIC STORM ON 30TH AUGUST. THEREAFTER, IT WOULD CONTINUE TO MOVE WEST-SOUTHWESTWARDS OVER NORTHEAST ARABIAN SEA AWAY FROM THE INDIAN COAST DURING SUBSEQUENT 2 DAYS.
- (2) LOW-PRESSURE AREA OVER CENTRAL AND ADJOINING NORTH BAY OF BENGAL IS LIKELY TO MOVE IT IS LIKELY TO MOVE WEST-NORTHWESTWARDS AND BECOME MORE MARKED OVER WESTCENTRAL AND ADJOINING NORTHWEST BAY OF BENGAL BY 30TH AUGUST. THEREAFTER, WHILE MOVING TOWARDS NORTH ANDHRA PRADESH AND ADJOINING SOUTH ODISHA COASTS, IT IS LIKELY TO INTENSIFY INTO A DEPRESSION OVER WESTCENTRAL AND ADJOINING NORTHWEST BAY OF BENGAL DURING SUBSEQUENT 2 DAYS.

(M SHARMA)
SCIENTIST-D
RSMC NEW DELHI



39

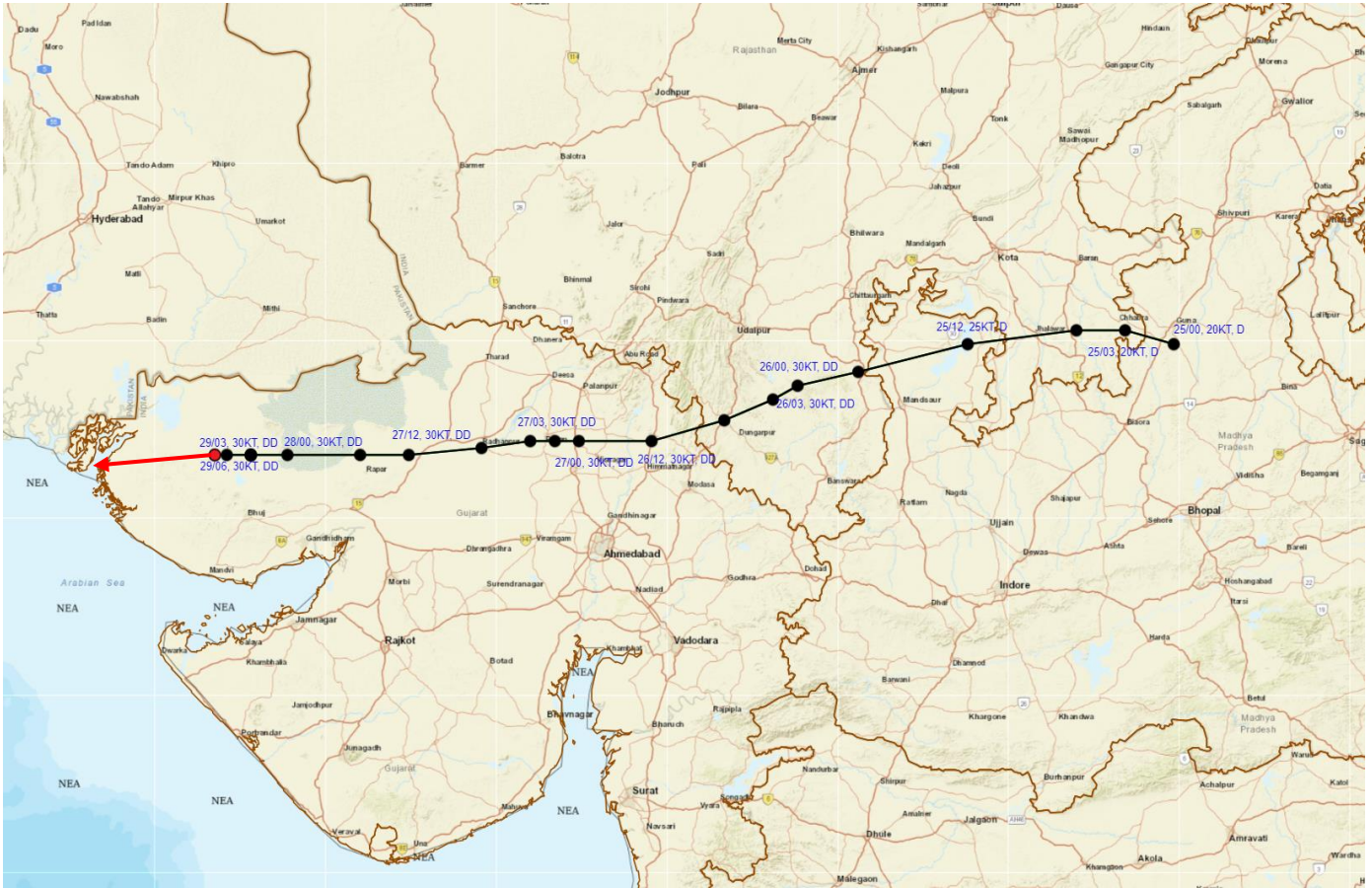
589

IMD, DELHI

Cloud distribution: (a) Isolated: <25%, Scattered:25-50%, Broken: 51-75%, Solid:>75%, Convection Intensity: (a) Weak: Cloud Top Temperature (CTT) >-25°C, (b) Moderate: CTT: - 25°C to -40°C, (c) Intense: CTT: - 41°C to -70°C and (d) Very Intense: : Less than -70°C
PROBABILITY OF CYCLOGENESIS (FORMATION OF DEPRESSION):NIL: 0%, LOW: 1-33%, , MODERATE: 34-66% AND HIGH: 67-100%
This is a guidance Bulletin for WMO/ESCAP Panel Member countries. Visit respective National websites for Country specific Bulletins



OBSERVED AND FORECAST TRACK OF DEEP DEPRESSION OVER SAURASHTRA & KACHCHH BASED ON 0600 UTC (1130 IST) OF 29TH AUGUST, 2024.

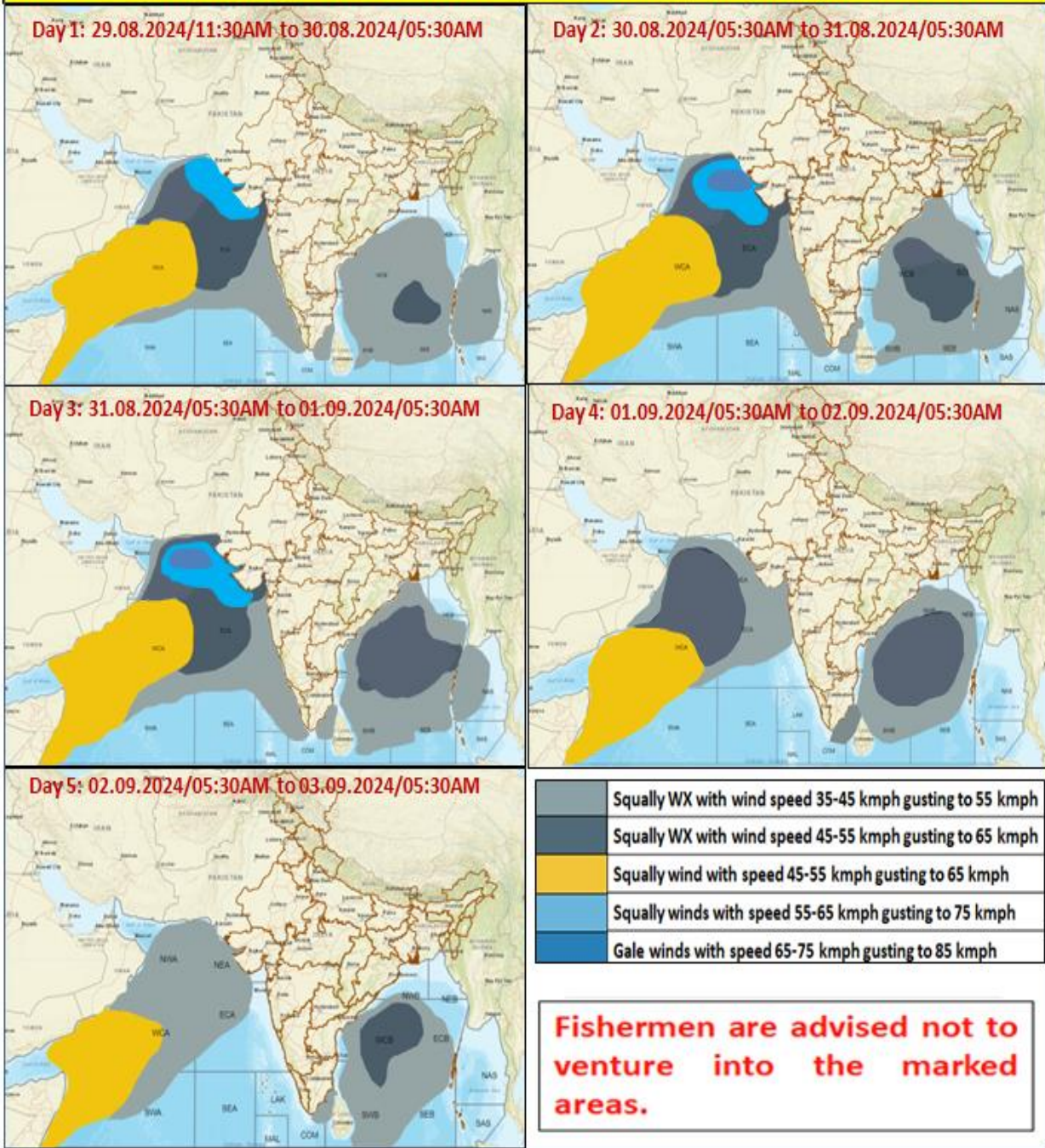


DATE/TIME IN UTC
IST=UTC + 0530
L: LOW PRESSURE AREA
WML: WELL MARKED LOW PRESSURE AREA
D: DEPRESSION (17-27 KT)
DD: DEEP DEPRESSION (28-33 KT)
CS: CYCLONIC STORM (34-47 KT)
SCS: SEVERE CYCLONIC STORM (48-63KT)
VSCS: VERY SEVERE CYCLONIC STORM (64-89 KT)
ECS: EXTREMELY SEVERE CYCLONIC STORM (90-119 KT)
SuCS: SUPER CYCLONIC STORM \geq 120 KT)

- LESS THAN 34 KT
- 34-47 KT
- \geq 48 KT
- OBSERVED TRACK
- FORECAST TRACK
- CONE OF UNCERTAINTY

Cloud distribution: (a) Isolated: <25%, Scattered:25-50%, Broken: 51-75%, Solid:>75%, Convection Intensity: (a) Weak: Cloud Top Temperature (CTT) >-25°C, (b) Moderate: CTT: - 25°C to -40°C, (c) Intense: CTT: - 41°C to -70°C and (d) Very Intense: : Less than -70°C
PROBABILITY OF CYCLOGENESIS (FORMATION OF DEPRESSION):NIL: 0%, LOW: 1-33%, , MODERATE: 34-66% AND HIGH: 67-100%
 This is a guidance Bulletin for WMO/ESCAP Panel Member countries. Visit respective National websites for Country specific Bulletins

Fishermen Warning Graphics



Cloud distribution: (a) Isolated: <25%, Scattered:25-50%, Broken: 51-75%, Solid:>75%, Convection Intensity: (a) Weak: Cloud Top Temperature (CTT) >-25°C, (b) Moderate: CTT: - 25°C to -40°C, (c) Intense: CTT: - 41°C to -70°C and (d) Very Intense: : Less than -70°C
 PROBABILITY OF CYCLOGENESIS (FORMATION OF DEPRESSION):NIL: 0%, LOW: 1-33%, , MODERATE: 34-66% AND HIGH: 67-100%
 This is a guidance Bulletin for WMO/ESCAP Panel Member countries. Visit respective National websites for Country specific Bulletins