



REGIONAL SPECIALISED METEOROLOGICAL CENTRE-TROPICAL CYCLONES, NEW DELHI TROPICAL WEATHER OUTLOOK

DEMS-RSMC TROPICAL CYCLONES NEW DELHI DATED 25.10.2024

SPECIAL TROPICAL WEATHER OUTLOOK FOR THE NORTH INDIAN OCEAN (THE BAY OF BENGAL AND THE ARABIAN SEA) VALID FOR THE NEXT 168 HOURS ISSUED AT 1500 UTC OF 25.10.2024 BASED ON 1200 UTC OF 25.10.2024.

SUB: DEEP DEPRESSION (REMNANT OF SEVERE CYCLONIC STORM “DANA”) OVER NORTH ODISHA

THE DEEP DEPRESSION (REMNANT OF SEVERE CYCLONIC STORM “DANA”) OVER NORTH COASTAL ODISHA MOVED WESTWARDS WITH A SPEED OF 7 KMPH DURING PAST 6 HOURS AND LAY CENTRED OVER NORTH ODISHA NEAR LATITUDE 21.4°N AND LONGITUDE 86.2°E AT 1200 UTC OF TODAY, THE 25TH OCTOBER, ABOUT 50 KM NORTHWEST OF BHADRAK (ODISHA) AND 70 KM EAST-SOUTHEAST OF KEONGJHARGARH (42891).

IT IS LIKELY TO MOVE NEARLY WESTWARDS ACROSS NORTH ODISHA AND WEAKEN GRADUALLY INTO A DEPRESSION DURING NEXT 12 HOURS.

THE SYSTEM IS UNDER CONTINUOUS SURVEILLANCE OF THE DOPPLER WEATHER RADAR AT PARADIP.

AS PER THE SATELLITE IMAGERY, THE ASSOCIATED SCATTERED TO BROKEN LOW/MEDIUM CLOUDS WITH EMBEDDED INTENSE TO VERY INTENSE CONVECTION LAY OVER NORTHEAST ODISHA AND SOUTH GANGETIC WEST BENGAL. MINIMUM CTT IS MINUS 75-90°C. MODERATE TO INTENSE CONVECTION LAY OVER NORTH GANGETIC WEST BENGAL, SOUTHEAST JHARKHAND AND NORTHWEST BAY OF BENGAL.

ESTIMATED CENTRAL PRESSURE IS 998 HPA AND MAXIMUM SUSTAINED WIND SPEED IS 30 KNOTS GUSTING TO 40 KNOTS. SEA CONDITION IS ROUGH OVER NORTHWEST BAY OF BENGAL.

UNDER IT'S INFLUENCE:

(I) WIND WARNING:

NORTHWEST BAY OF BENGAL AND ALONG & OFF ODISHA-WESTBENGAL COASTS: SQUALLY WIND SPEED REACHING 30-40 KMPH GUSTING TO 50 KMPH FROM 1200 UTC OF 25TH OCTOBER 2024.

(II) SEA CONDITION:

SEA CONDITION IS LIKELY TO BE ROUGH OVER NORTHWEST BAY OF BENGAL AND ALONG & OFF ODISHA-WESTBENGAL COASTS FROM 1200 UTC OF 25TH AND IMPROVE GRADUALLY THEREAFTER.

(III) FISHERMEN WARNING:

FISHERMEN ARE ADVISED NOT TO VENTURE INTO NORTHWEST BAY OF BENGAL AND ALONG & OFF ODISHA AND WEST BENGAL COASTS ON 25TH OCTOBER.

REMARKS:

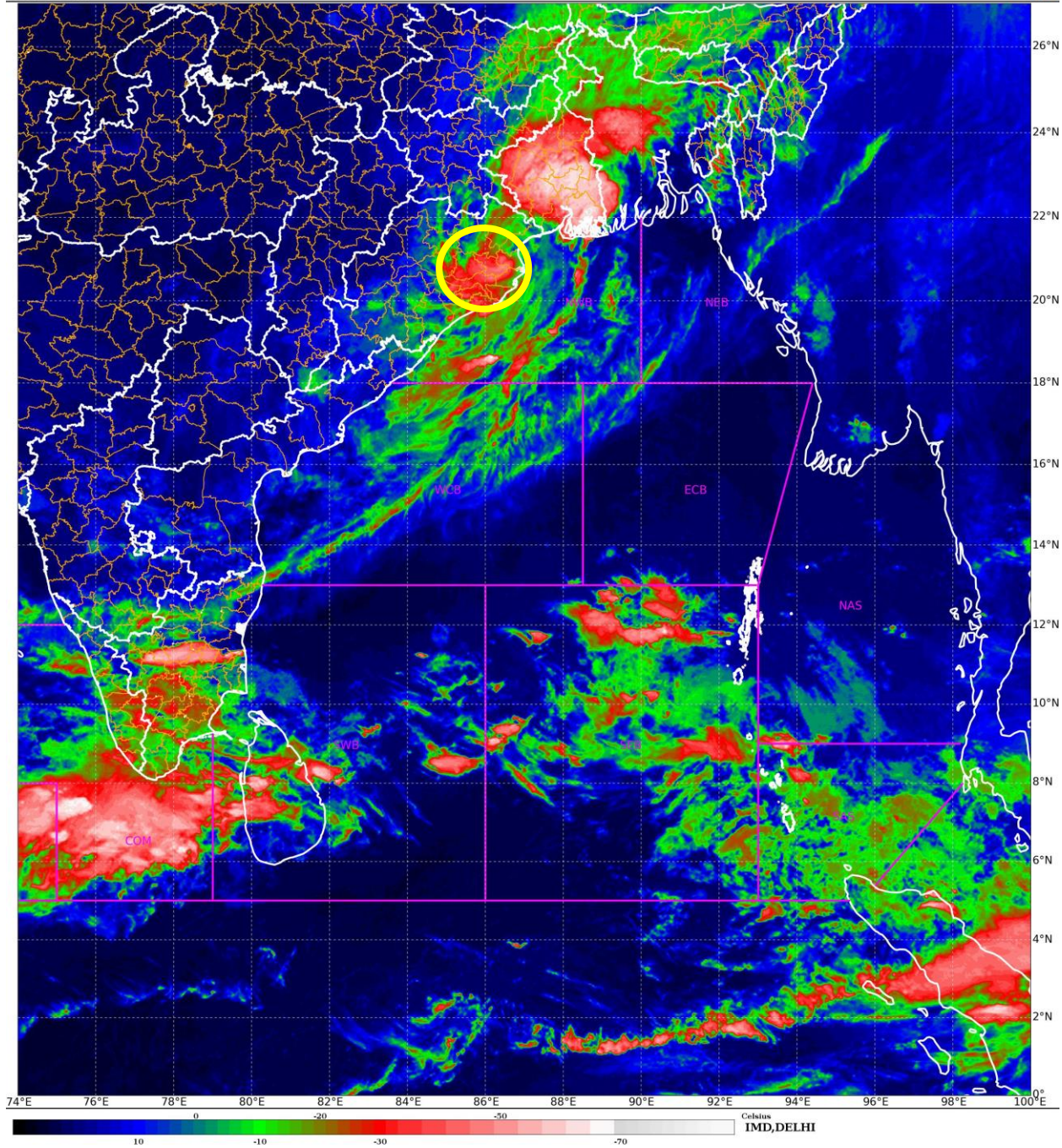
THE SEA SURFACE TEMPERATURE (SST) IS 29-30°C OVER CENTRAL & NORTH BOB. THE TROPICAL CYCLONE HEAT POTENTIAL (TCHP) IS >100 KJ/CM² OVER WESTCENTRAL BOB, AROUND 70-80 KJ/CM² OVER NORTHWEST BOB. VORTICITY AT LOW LEVEL IS $200 \times 10^{-6} \text{S}^{-1}$ TO THE SOUTHEAST OF SYSTEM CENTRE WITH VERTICAL EXTENSION UPTO 500 HPA LEVEL. LOW-LEVEL CONVERGENCE IS AROUND $15 \times 10^{-6} \text{S}^{-1}$ TO THE WEST OF SYSTEM AREA. POSITIVE UPPER-LEVEL DIVERGENCE IS ALSO SAME AND IS $30 \times 10^{-6} \text{S}^{-1}$ TO THE SYSTEM AREA AND EXTENDING SOUTH-SOUTHWESTWARDS UPTO SOUTHERN INDIA. VERTICAL WIND SHEAR (VWS) IS LOW (05-10 KT) OVER SYSTEM AREA AND TO ITS WEST. THE UPPER TROPOSPHERIC RIDGE IS AROUND 20⁰N. EAST-SOUTHEASTERLY WINDS PREVAILING IN UPPER TROPOSPHERIC LEVELS ARE LIKELY TO STEER THE SYSTEM NEARLY WEST-SOUTHWESTWARDS.

(M. SHARMA)
SCIENTIST-D
RSMC NEW DELHI

SAT : INSAT-3DR IMG
IMG_TIR1_TEMP 10.8 um
LIC Mercator

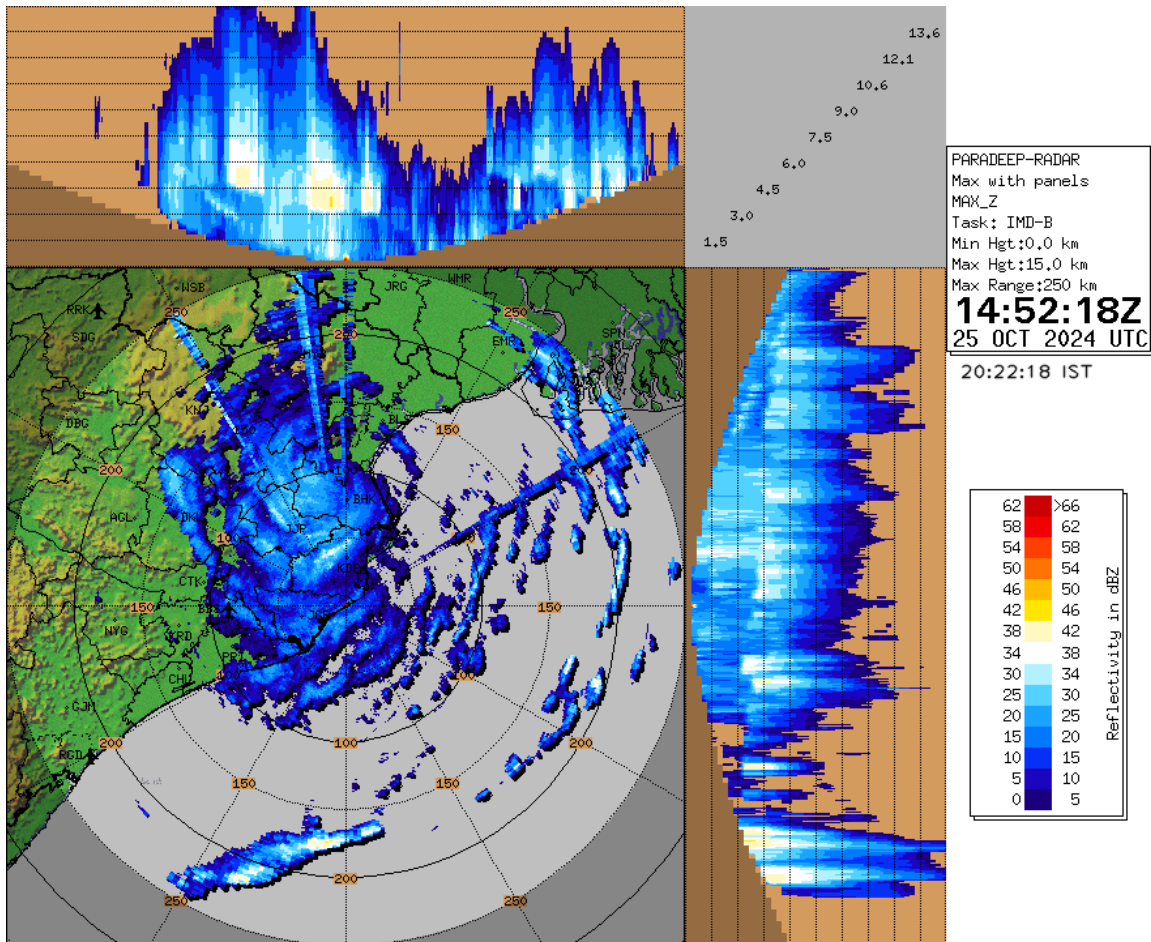
25-10-2024/(1415 to 1442) GMT
25-10-2024/(1945 to 2012) IST

DEEP DEPRESSION 21.4N/86.2E



Cloud distribution: (a) Isolated: <25%, Scattered:25-50%, Broken: 51-75%, Solid:>75%, Convection Intensity: (a) Weak: Cloud Top Temperature (CTT) >-25°C, (b) Moderate: CTT: - 25°C to -40°C, (c) Intense: CTT: - 41°C to -70°C and (d) Very Intense: : Less than -70°C
PROBABILITY OF CYCLOGENESIS (FORMATION OF DEPRESSION):NIL: 0%, LOW: 1-33%, , MODERATE: 34-66% AND HIGH: 67-100%
This is a guidance Bulletin for WMO/ESCAP Panel Member countries. Visit respective National websites for Country specific Bulletins

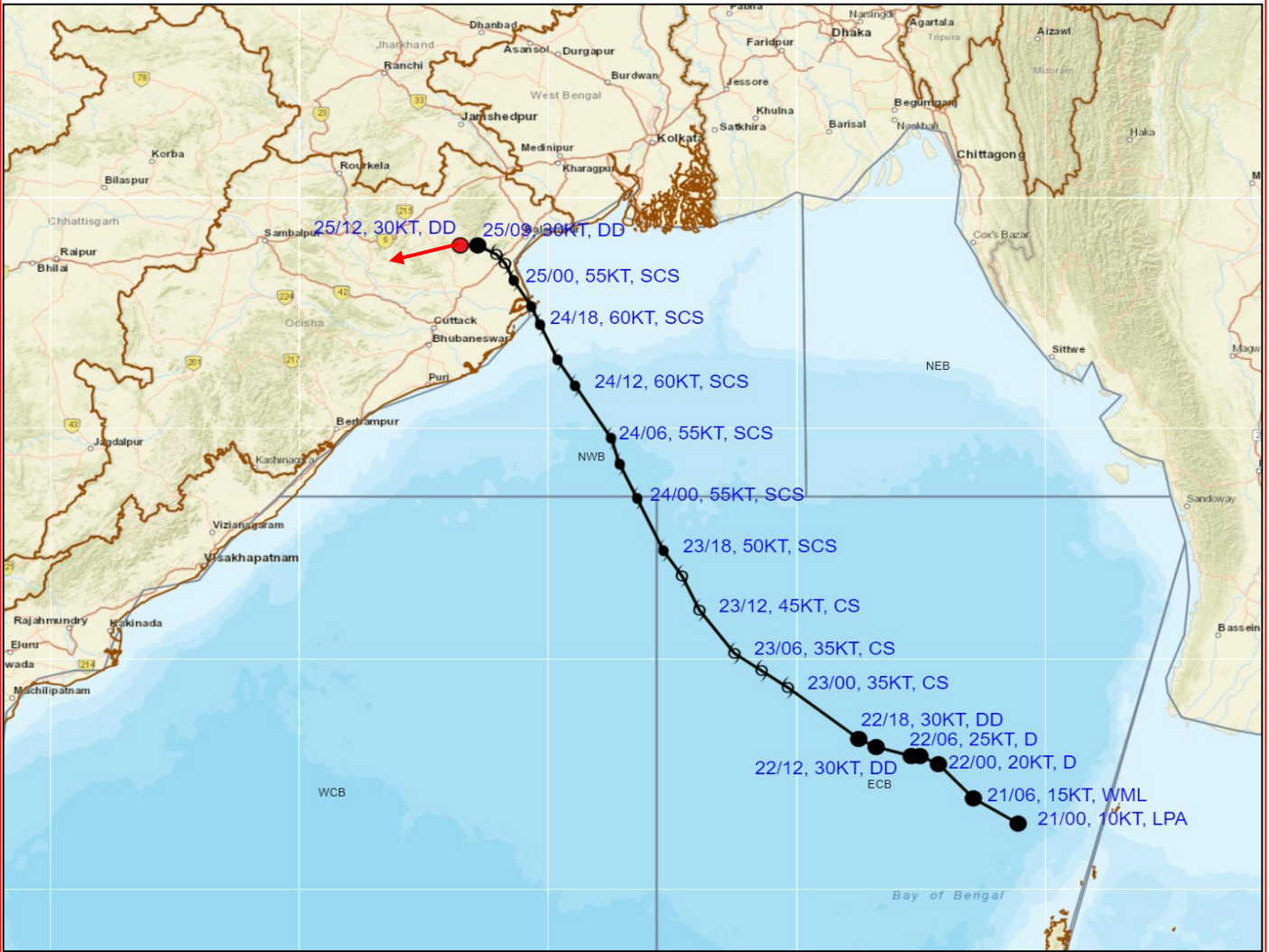
Paradip Radar



Cloud distribution: (a) Isolated: <25%, Scattered:25-50%, Broken: 51-75%, Solid:>75%, Convection Intensity: (a) Weak: Cloud Top Temperature (CTT) >-25°C, (b) Moderate: CTT: - 25°C to -40°C, (c) Intense: CTT: - 41°C to -70°C and (d) Very Intense: : Less than -70°C
 PROBABILITY OF CYCLOGENESIS (FORMATION OF DEPRESSION):NIL: 0%, LOW: 1-33%, , MODERATE: 34-66% AND HIGH: 67-100%
 This is a guidance Bulletin for WMO/ESCAP Panel Member countries. Visit respective National websites for Country specific Bulletins



OBSERVED AND FORECAST TRACK OF DEEP DEPRESSION (REMNANT OF SEVERE CYCLONIC STORM 'DANA') OVER NORTH ODISHA BASED ON 1200 UTC (1730 Hrs. IST) OF 25th OCTOBER 2024



DATE/TIME	: IN UTC
IST	: UTC + 0530
KT	: NAUTICAL MILE S/HOUR = 1.85 KM/HOUR
LPA	: LOW PRESSURE AREA
WML	: WELL MARKED LOW PRESSURE AREA
D	: DEPRESSION (17-27 KT)
DD	: DEEP DEPRESSION (28-33 KT)
CS	: CYCLONIC STORM (34-47 KT)
SCS	: SEVERE CYCLONIC STORM (48-63 KT)
VSCS	: VERY SEVERE CYCLONIC STORM (64-89 KT)
ESCS	: EXTREMELY SEVERE CYCLONIC STORM (90-119 KT)
SuCS	: SUPER CYCLONIC STORM (≥ 120 KT)

	LESS THAN 34 KT
	34-47 KT
	≥ 48 KT
	OBSERVED TRACK
	FORECAST TRACK
	CONE OF UNCERTAINTY

Cloud distribution: (a) Isolated: <25%, Scattered: 25-50%, Broken: 51-75%, Solid: >75%, Convection Intensity: (a) Weak: Cloud Top Temperature (CTT) >-25°C, (b) Moderate: CTT: - 25°C to -40°C, (c) Intense: CTT: - 41°C to -70°C and (d) Very Intense: : Less than -70°C
 PROBABILITY OF CYCLOGENESIS (FORMATION OF DEPRESSION): NIL: 0%, LOW: 1-33%, MODERATE: 34-66% AND HIGH: 67-100%
 This is a guidance Bulletin for WMO/ESCAP Panel Member countries. Visit respective National websites for Country specific Bulletins

Fishermen Warning Graphics

