



REGIONAL SPECIALISED METEOROLOGICAL CENTRE-TROPICAL CYCLONES, NEW DELHI TROPICAL WEATHER OUTLOOK

DEMS-RSMC TROPICAL CYCLONES NEW DELHI DATED 25.10.2024

SPECIAL TROPICAL WEATHER OUTLOOK FOR THE NORTH INDIAN OCEAN (THE BAY OF BENGAL AND THE ARABIAN SEA) VALID FOR THE NEXT 168 HOURS ISSUED AT 2030 UTC OF 25.10.2024 BASED ON 1800 UTC OF 25.10.2024.

SUB: DEPRESSION (REMNANT OF SEVERE CYCLONIC STORM "DANA") OVER NORTH ODISHA

THE DEEP DEPRESSION (REMNANT OF SEVERE CYCLONIC STORM "DANA") OVER NORTH ODISHA REMAINED PRACTICALLY STATIONARY DURING PAST 6 HOURS, WEAKENED INTO A DEPRESSION OVER THE SAME REGION AND LAY CENTRED AT 1800 UTC OF 25TH OCTOBER NEAR LATITUDE 21.4°N AND LONGITUDE 86.2°E ABOUT 50 KM NORTHWEST OF BHADRAK(ODISHA) AND 70 KM EAST-SOUTHEAST OF KEONJHAR(42891).

IT IS LIKELY TO MOVE NEARLY WESTWARDS ACROSS NORTH ODISHA AND WEAKEN GRADUALLY INTO A WELL MARKED LOW PRESSURE AREA DURING NEXT 12 HOURS.

THE SYSTEM IS UNDER CONTINUOUS SURVEILLANCE OF THE DOPPLER WEATHER RADAR AT PARADIP.

AS PER THE SATELLITE IMAGERY, THE ASSOCIATED SCATTERED TO BROKEN LOW/MEDIUM CLOUDS WITH EMBEDDED INTENSE CONVECTION LAY OVER NORTHEAST ODISHA AND SOUTH GANGETIC WEST BENGAL. MINIMUM CTT IS MINUS 75-90°C. MODERATE TO INTENSE CONVECTION LAY OVER NORTH GANGETIC WEST BENGAL, SOUTHEAST JHARKHAND AND NORTHWEST BAY OF BENGAL.

ESTIMATED CENTRAL PRESSURE IS 1002 HPA AND MAXIMUM SUSTAINED WIND SPEED IS 25 KNOTS GUSTING TO 35 KNOTS.

UNDER IT'S INFLUENCE:

(I) WIND WARNING:

NORTHWEST BAY OF BENGAL AND ALONG & OFF ODISHA-WESTBENGAL COASTS: SQUALLY WIND SPEED REACHING 30-40 GUSTING TO 50 KMPH IS LIKELY TO PREVAIL DURING NEXT 6 HOURS.

(II) SEA CONDITION:

SEA CONDITION IS LIKELY TO BE **ROUGH OVER NORTHWEST BAY OF BENGAL AND ALONG & OFF ODISHA-WESTBENGAL COASTS** DURING NEXT 6 HOURS AND IMPROVE GRADUALLY THEREAFTER.

(III) FISHERMEN WARNING:

FISHERMEN ARE ADVISED NOT TO VENTURE INTO NORTHWEST BAY OF BENGAL AND ALONG & OFF ODISHA AND WEST BENGAL COASTS DURING NEXT 6 HOURS.

REMARKS:

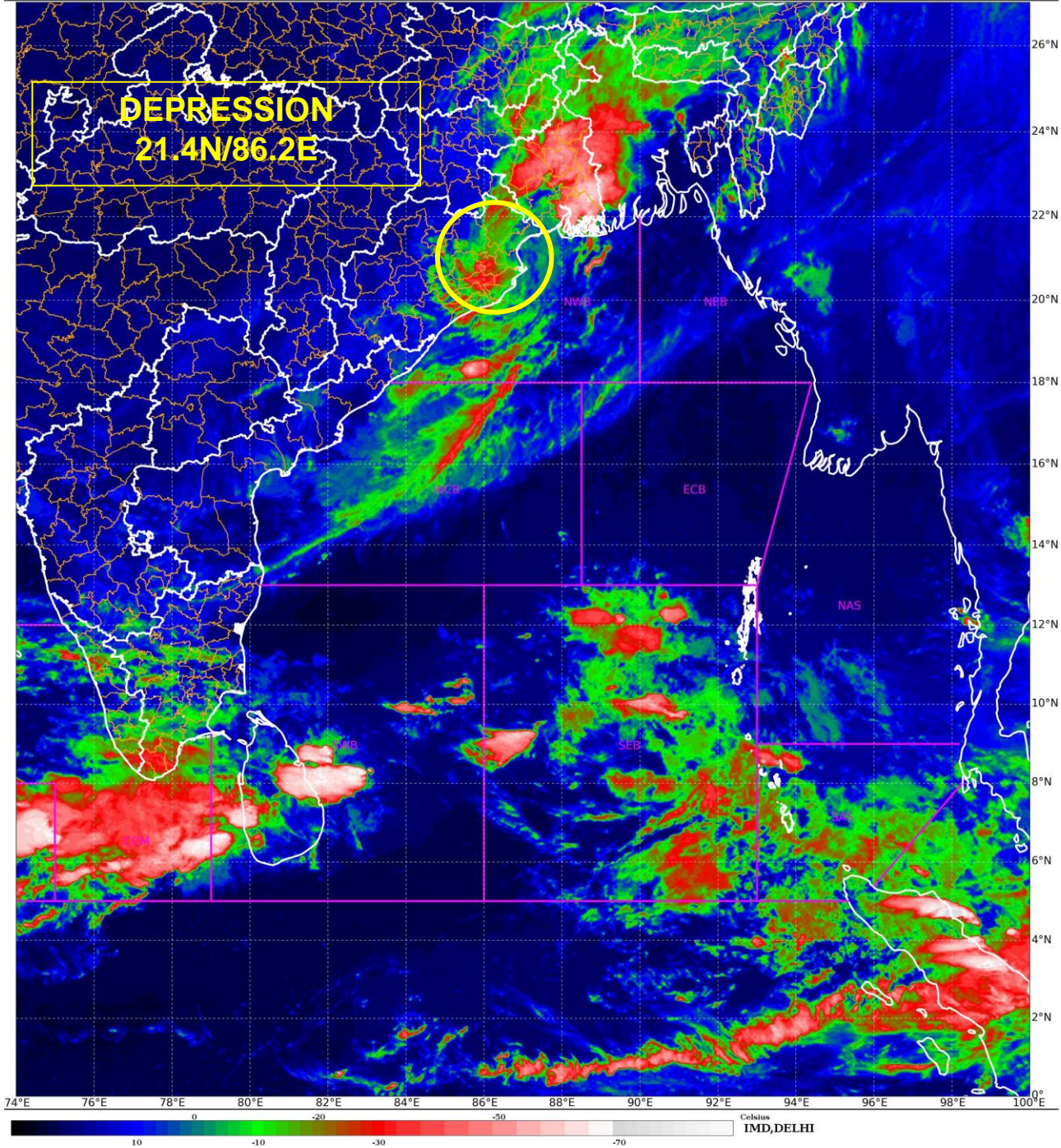
THE SEA SURFACE TEMPERATURE (SST) IS 29-30°C OVER CENTRAL & NORTH BOB. THE TROPICAL CYCLONE HEAT POTENTIAL (TCHP) IS >100 KJ/CM² OVER WESTCENTRAL BOB, AROUND 70-80 KJ/CM² OVER NORTHWEST BOB. VORTICITY AT LOW LEVEL IS 200 X 10⁻⁶S⁻¹ TO THE SOUTHEAST OF SYSTEM CENTRE WITH VERTICAL EXTENSION UPTO 500 HPA LEVEL. LOW-LEVEL CONVERGENCE IS AROUND 20 X10⁻⁶S⁻¹ TO THE WEST OF SYSTEM AREA. POSITIVE UPPER-LEVEL DIVERGENCE IS 05X10⁻⁶S⁻¹ TO THE SYSTEM AREA AND EXTENDING SOUTH-SOUTHWESTWARDS UPTO SOUTHERN INDIA. VERTICAL WIND SHEAR (VWS) IS LOW (05-10 KT) OVER SYSTEM AREA AND TO ITS WEST. THE UPPER TROPOSPHERIC RIDGE IS AROUND 20⁰N. EAST-SOUTHEASTERLY WINDS PREVAILING IN UPPER TROPOSPHERIC LEVELS ARE LIKELY TO STEER THE SYSTEM NEARLY WEST-SOUTHWESTWARDS.

(SHASHI KANT)
SCIENTIST-D
RSMC NEW DELHI

SATELLITE IMAGERY

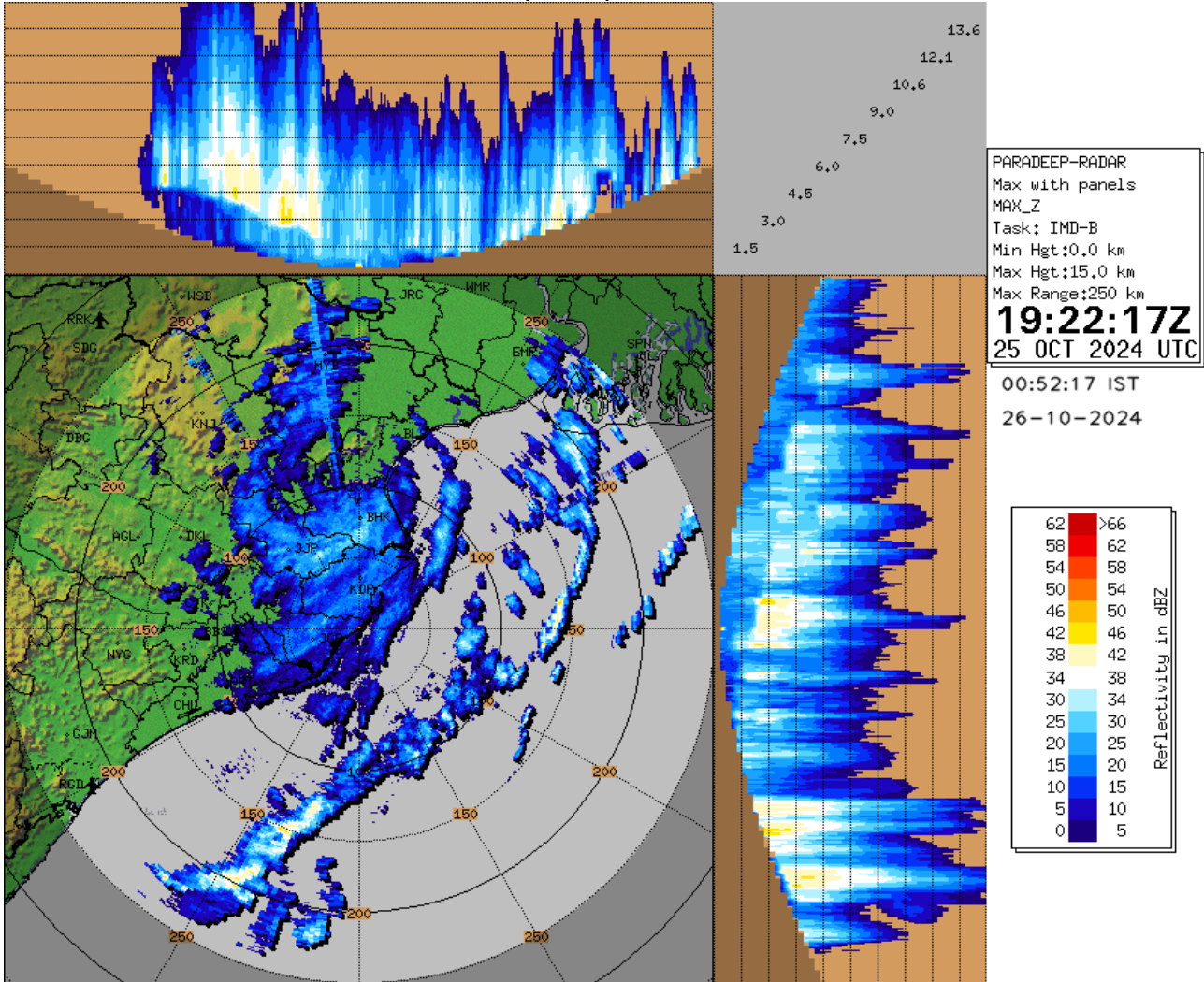
SAT : INSAT-3DR IMG
IMG_TIR1_TEMP 10.8 um
LIC Mercator

25-10-2024/(1645 to 1712) GMT
25-10-2024/(2215 to 2242) IST



Cloud distribution: (a) Isolated: <25%, Scattered:25-50%, Broken: 51-75%, Solid:>75%, Convection Intensity: (a) Weak: Cloud Top Temperature (CTT) >-25°C, (b) Moderate: CTT: - 25°C to -40°C, (c) Intense: CTT: - 41°C to -70°C and (d) Very Intense: : Less than -70°C
PROBABILITY OF CYCLOGENESIS (FORMATION OF DEPRESSION):NIL: 0%, LOW: 1-33%, , MODERATE: 34-66% AND HIGH: 67-100%
This is a guidance Bulletin for WMO/ESCAP Panel Member countries. Visit respective National websites for Country specific Bulletins

RADAR OBSERVATIONS (MAX_Z) OF DWR PARADIP



Cloud distribution: (a) Isolated: <25%, Scattered:25-50%, Broken: 51-75%, Solid:>75%, Convection Intensity: (a) Weak: Cloud Top Temperature (CTT) >-25°C, (b) Moderate: CTT: - 25°C to -40°C, (c) Intense: CTT: - 41°C to -70°C and (d) Very Intense: : Less than -70°C
 PROBABILITY OF CYCLOGENESIS (FORMATION OF DEPRESSION):NIL: 0%, LOW: 1-33%, , MODERATE: 34-66% AND HIGH: 67-100%
 This is a guidance Bulletin for WMO/ESCAP Panel Member countries. Visit respective National websites for Country specific Bulletins



OBSERVED AND FORECAST TRACK OF DEPRESSION (REMNANT OF SEVERE CYCLONIC STORM 'DANA') OVER NORTH ODISHA BASED ON 1800 UTC (2330 Hrs. IST) OF 25th OCTOBER 2024



DATE/TIME	: IN UTC
IST	: UTC + 0530
KT	: NAUTICAL MILE/S/HOUR = 1.85 KM/HOUR
LPA	: LOW PRESSURE AREA
WML	: WELL MARKED LOW PRESSURE AREA
D	: DEPRESSION (17-27 KT)
DD	: DEEP DEPRESSION (28-33 KT)
CS	: CYCLONIC STORM (34-47 KT)
SCS	: SEVERE CYCLONIC STORM (48-63 KT)
VSCS	: VERY SEVERE CYCLONIC STORM (64-89 KT)
ESCS	: EXTREMELY SEVERE CYCLONIC STORM (90-119 KT)
SuCS	: SUPER CYCLONIC STORM (≥120 KT)

- LESS THAN 34 KT
- 34-47 KT
- ≥ 48 KT
- OBSERVED TRACK
- FORECAST TRACK
- CONE OF UNCERTAINTY

Cloud distribution: (a) Isolated: <25%, Scattered:25-50%, Broken: 51-75%, Solid:>75%, Convection Intensity: (a) Weak: Cloud Top Temperature (CTT) >-25°C, (b) Moderate: CTT: - 25°C to -40°C, (c) Intense: CTT: - 41°C to -70°C and (d) Very Intense: : Less than -70°C
 PROBABILITY OF CYCLOGENESIS (FORMATION OF DEPRESSION):NIL: 0%, LOW: 1-33%, , MODERATE: 34-66% AND HIGH: 67-100%
 This is a guidance Bulletin for WMO/ESCAP Panel Member countries. Visit respective National websites for Country specific Bulletins

Fishermen Warning Graphics

