



**REGIONAL SPECIALISED METEOROLOGICAL CENTRE-TROPICAL CYCLONES, NEW DELHI
TROPICAL WEATHER OUTLOOK**

DEMS-RSMC TROPICAL CYCLONES NEW DELHI DATED 03.09.2024

TROPICAL WEATHER OUTLOOK FOR NORTH INDIAN OCEAN (THE BAY OF BENGAL AND THE ARABIAN SEA) VALID FOR NEXT 168 HOURS ISSUED AT 0630 UTC OF 03.09.2024 BASED ON 0300 UTC OF 03.09.2024.

BAY OF BENGAL:

YESTERDAY'S WELL MARKED LOW PRESSURE AREA OVER CENTRAL PARTS OF VIDARBHA & NEIGHBOURHOOD LAY AS A LOW PRESSURE AREA OVER WEST VIDARBHA & NEIGHBOURHOOD AT 0300 UTC OF TODAY, 03RD SEPTEMBER, 2024. THE ASSOCIATED CYCLONIC CIRCULATION EXTENDED UPTO 3.1 KM ABOVE MEAN SEA LEVEL.

A FRESH LOW PRESSURE AREA IS LIKELY TO FORM OVER WESTCENTRAL AND ADJOINING NORTHWEST BAY OF BENGAL AROUND 05TH SEPTEMBER, 2024.

SCATTERED LOW AND MEDIUM CLOUDS WITH EMBEDDED INTENSE TO VERY INTENSE CONVECTION LAY OVER CENTRAL & SOUTH BAY OF BENGAL, ANDAMAN SEA, GULF OF MARTABAN TENASSERIM COAST & ARAKAN COAST. SCATTERED LOW AND MEDIUM CLOUDS WITH EMBEDDED MODERATE TO INTENSE CONVECTION LAY OVER NORTH BAY OF BENGAL.

***PROBABILITY OF CYCLOGENESIS (FORMATION OF DEPRESSION) DURING NEXT 168 HRS:**

24 HOURS	24-48 HOURS	48-72 HOURS	72-96 HOURS	96-120 HOURS	120-144 HOURS	144-168 HOURS
NIL	NIL	NIL	NIL	NIL	NIL	NIL

***NOTE: EVERY 24HR FORECAST IS VALID UPTO 0300 UTC (0830 IST) OF NEXT DAY**

ARABIAN SEA:

YESTERDAY'S WELL MARKED LOW PRESSURE AREA OVER NORTHWEST ARABIAN SEA LAY AS A LOW PRESSURE AREA OVER WESTCENTRAL & ADJOINING NORTHWEST ARABIAN SEA AT 0300 UTC OF TODAY, 03RD SEPTEMBER, 2024. THE ASSOCIATED CYCLONIC CIRCULATION EXTENDED UPTO 5.8 KM ABOVE MEAN SEA LEVEL.

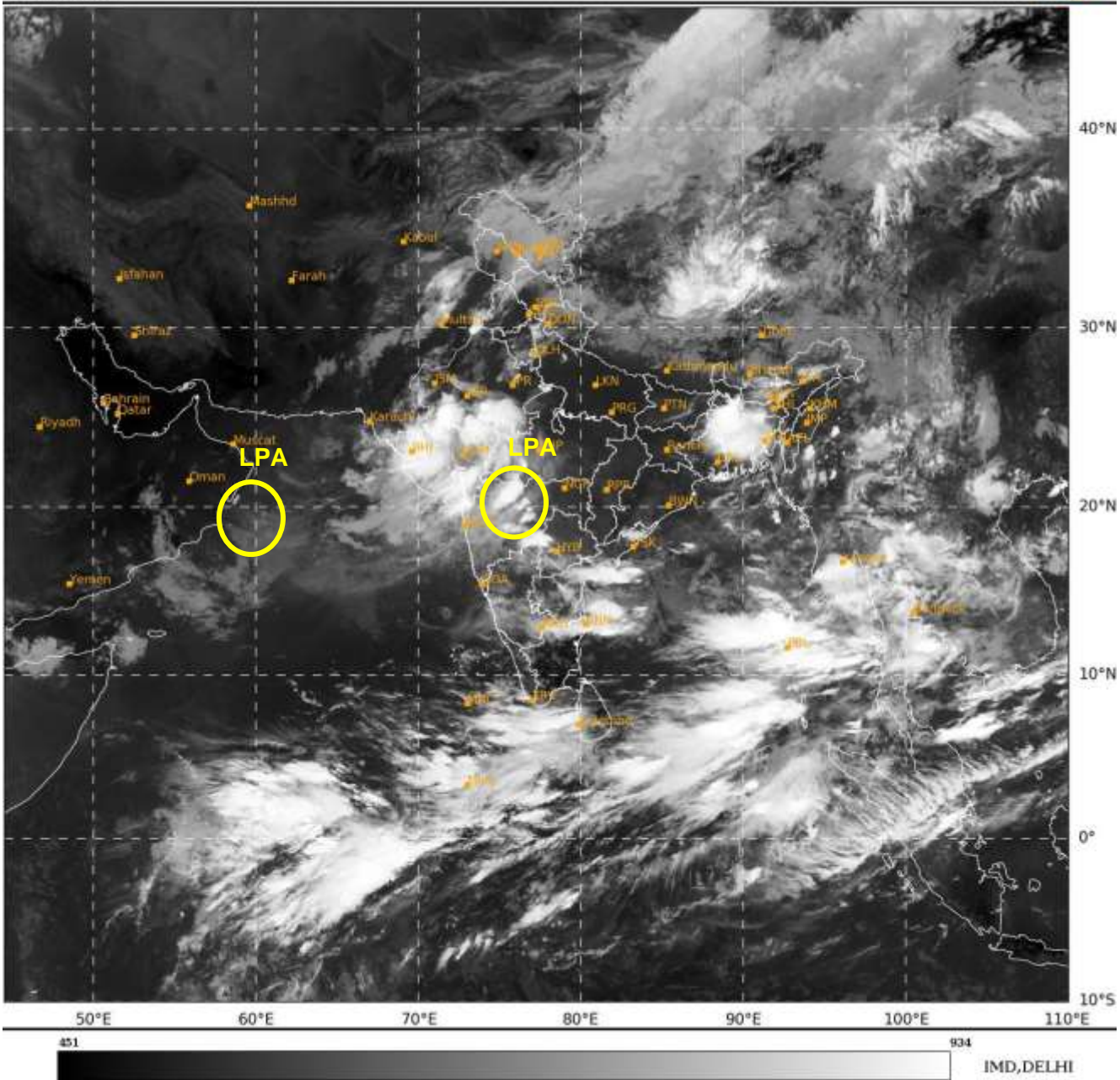
SCATTERED LOW AND MEDIUM CLOUDS WITH EMBEDDED INTENSE TO VERY INTENSE CONVECTION LAY OVER GULF OF KUTCH, GULF OF CAMBAY, MALDIVES & COMORIN AREA. SCATTERED LOW AND MEDIUM CLOUDS WITH EMBEDDED MODERATE TO INTENSE CONVECTION LAY OVER EAST ARABIAN SEA& LAKSHADWEEP ISLANDS AREA AND ISOLATED WEAK TO MODERATE CONVECTION LAY OVER WEST ARABIAN SEA.

***PROBABILITY OF CYCLOGENESIS (FORMATION OF DEPRESSION) DURING NEXT 168 HRS:**

24 HOURS	24-48 HOURS	48-72 HOURS	72-96 HOURS	96-120 HOURS	120-144 HOURS	144-168 HOURS
NIL	NIL	NIL	NIL	NIL	NIL	NIL

***NOTE: EVERY 24HR FORECAST IS VALID UPTO 0300 UTC (0830 IST) OF NEXT DAY**

REMARKS: NIL



LPA: LOW PRESSURE AREA