



REGIONAL SPECIALISED METEOROLOGICAL CENTRE-TROPICAL CYCLONES, NEW DELHI TROPICAL WEATHER OUTLOOK

DEMS-RSMC TROPICAL CYCLONES NEW DELHI DATED 26.10.2024

SPECIAL TROPICAL WEATHER OUTLOOK FOR THE NORTH INDIAN OCEAN (THE BAY OF BENGAL AND THE ARABIAN SEA) VALID FOR THE NEXT 168 HOURS ISSUED AT 0300 UTC OF 26.10.2024 BASED ON 0000 UTC OF 26.10.2024.

SUB: WELL MARKED LOW PRESSURE AREA (REMNANT OF SEVERE CYCLONIC STORM "DANA") OVER NORTH ODISHA

THE DEPRESSION (REMNANT OF SEVERE CYCLONIC STORM "DANA") OVER NORTH ODISHA MOVED SLIGHTLY WESTWARDS DURING PAST 6 HOURS AND WEAKENED INTO A WELL MARKED LOW PRESSURE AREA OVER THE SAME REGION. IT IS LIKELY TO WEAKEN FURTHER AND BECOME INSIGNIFICANT DURING NEXT 12 HOURS.

WARNINGS: NIL

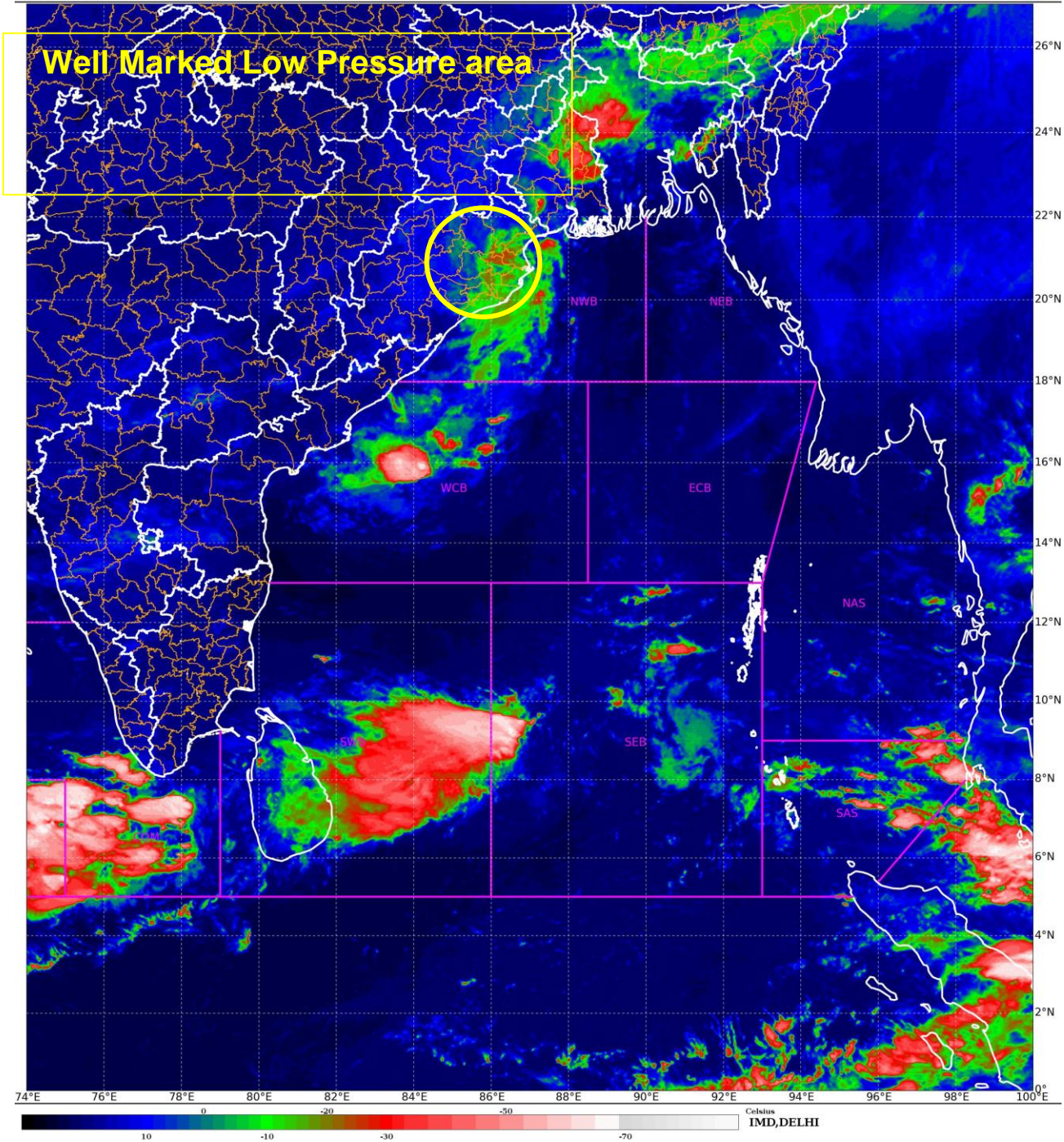
THIS IS THE LAST SPECIAL TROPICAL WEATHER OUTLOOK, HOWEVER REGULAR TROPICAL WEATHER OUTLOOK WOULD CONTINUE FROM REGIONAL SPECIALIZED METEOROLOGICAL CENTRE NEW DELHI.

(SHASHI KANT)
SCIENTIST-D
RSMC NEW DELHI

SATELLITE IMAGERY

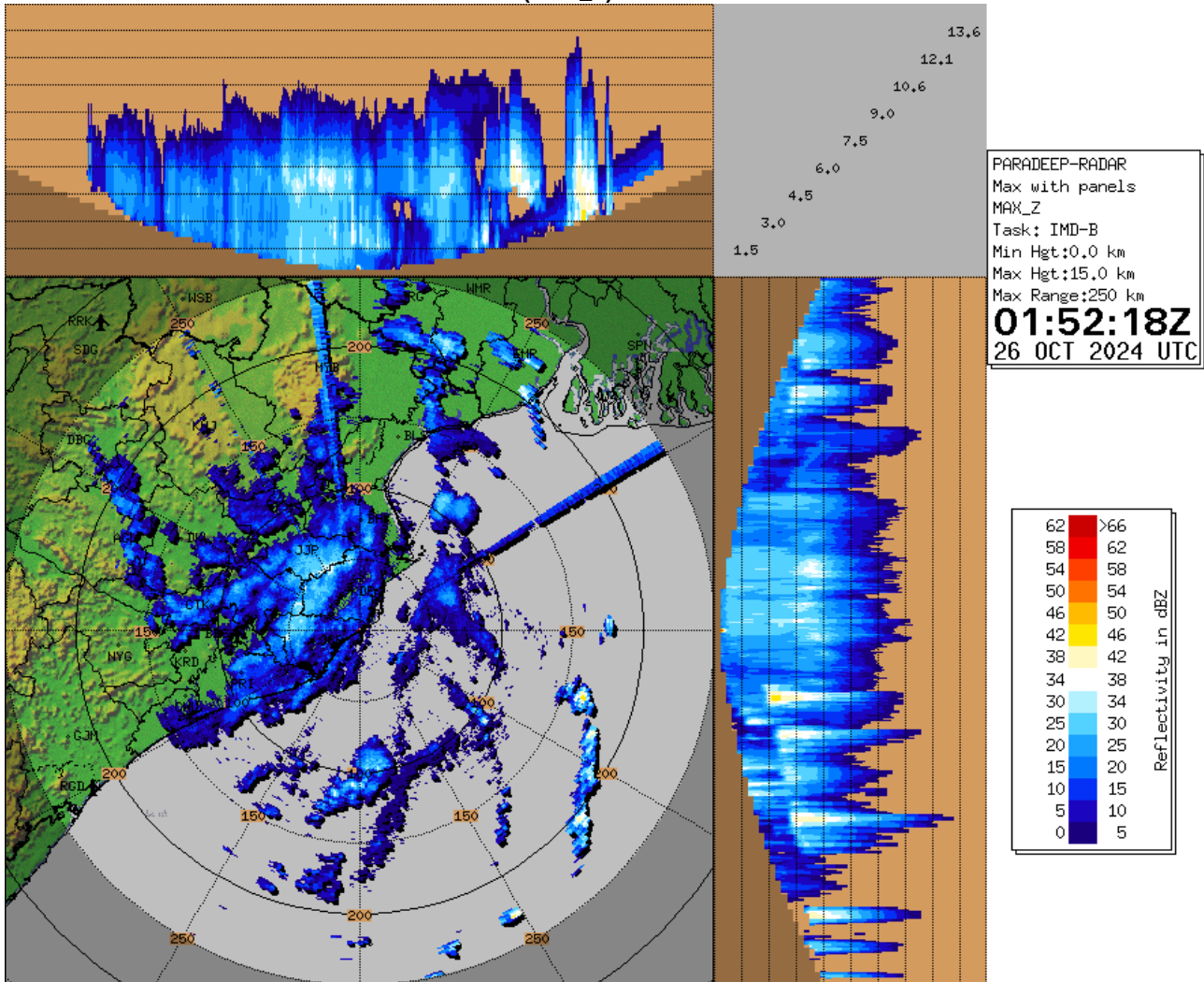
SAT : INSAT-3DR IMG
IMG_TIR1_TEMP 10.8 um
LIC Mercator

26-10-2024/(0115 to 0142) GMT
26-10-2024/(0645 to 0712) IST



Cloud distribution: (a) Isolated: <25%, Scattered:25-50%, Broken: 51-75%, Solid:>75%, Convection Intensity: (a) Weak: Cloud Top Temperature (CTT) >-25°C, (b) Moderate: CTT: - 25°C to -40°C, (c) Intense: CTT: - 41°C to -70°C and (d) Very Intense: : Less than -70°C
PROBABILITY OF CYCLOGENESIS (FORMATION OF DEPRESSION):NIL: 0%, LOW: 1-33%, , MODERATE: 34-66% AND HIGH: 67-100%
This is a guidance Bulletin for WMO/ESCAP Panel Member countries. Visit respective National websites for Country specific Bulletins

RADAR OBSERVATIONS (MAX_Z) OF DWR PARADIP



Cloud distribution: (a) Isolated: <25%, Scattered: 25-50%, Broken: 51-75%, Solid: >75%, Convection Intensity: (a) Weak: Cloud Top Temperature (CTT) >-25°C, (b) Moderate: CTT: - 25°C to -40°C, (c) Intense: CTT: - 41°C to -70°C and (d) Very Intense: : Less than -70°C
 PROBABILITY OF CYCLOGENESIS (FORMATION OF DEPRESSION): NIL: 0%, LOW: 1-33%, , MODERATE: 34-66% AND HIGH: 67-100%
 This is a guidance Bulletin for WMO/ESCAP Panel Member countries. Visit respective National websites for Country specific Bulletins



OBSERVED TRACK OF SEVERE CYCLONIC STORM 'DANA' OVER BAY OF BENGAL DURING 21st-26th OCTOBER 2024



DATE/TIME	: IN UTC
IST	: UTC + 0530
KT	: NAUTICAL MILE S/HOUR = 1.85 KM/HOUR
LPA	: LOW PRESSURE AREA
WML	: WELL MARKED LOW PRESSURE AREA
D	: DEPRESSION (17-27 KT)
DD	: DEEP DEPRESSION (28-33 KT)
CS	: CYCLONIC STORM (34-47 KT)
SCS	: SEVERE CYCLONIC STORM (48-63 KT)
VSCS	: VERY SEVERE CYCLONIC STORM (64-89 KT)
ESCS	: EXTREMELY SEVERE CYCLONIC STORM (90-119 KT)
SuCS	: SUPER CYCLONIC STORM (≥120 KT)

	LESS THAN 34 KT
	34-47 KT
	≥ 48 KT
	OBSERVED TRACK
	FORECAST TRACK
	CONE OF UNCERTAINTY

Cloud distribution: (a) Isolated: <25%, Scattered:25-50%, Broken: 51-75%, Solid:>75%, Convection Intensity: (a) Weak: Cloud Top Temperature (CTT) >-25°C, (b) Moderate: CTT: - 25°C to -40°C, (c) Intense: CTT: - 41°C to -70°C and (d) Very Intense: : Less than -70°C
 PROBABILITY OF CYCLOGENESIS (FORMATION OF DEPRESSION):NIL: 0%, LOW: 1-33%, , MODERATE: 34-66% AND HIGH: 67-100%
 This is a guidance Bulletin for WMO/ESCAP Panel Member countries. Visit respective National websites for Country specific Bulletins