



**REGIONAL SPECIALISED METEOROLOGICAL CENTRE-TROPICAL CYCLONES, NEW DELHI
TROPICAL WEATHER OUTLOOK**

DEMS-RSMC TROPICAL CYCLONES NEW DELHI DATED 05.09.2024

TROPICAL WEATHER OUTLOOK FOR NORTH INDIAN OCEAN (THE BAY OF BENGAL AND THE ARABIAN SEA) VALID FOR NEXT 168 HOURS ISSUED AT 0600 UTC OF 05.09.2024 BASED ON 0300 UTC OF 05.09.2024.

BAY OF BENGAL:

YESTERDAY'S CYCLONIC CIRCULATION OVER COASTAL ANDHRA PRADESH, YANAM & NEIGHBOURHOOD LAY OVER COASTAL ANDHRA PRADESH & ADJOINING WESTCENTRAL BAY OF BENGAL AT 0000 UTC OF TODAY, THE 5TH SEPTEMBER, 2024. UNDER IT'S INFLUENCE, A LOW PRESSURE AREA FORMED OVER WESTCENTRAL & ADJOINING NORTHWEST BAY OF BENGAL OFF NORTH ANDHRA PRADESH & ADJOINING SOUTH ODISHA COASTS AT 0300 UTC OF TODAY, THE 5TH SEPTEMBER, 2024. IT IS LIKELY TO MOVE GRADUALLY NORTH-NORTHWESTWARDS DURING NEXT 2 DAYS.

SCATTERED TO BROKEN LOW AND MEDIUM CLOUDS WITH EMBEDDED INTENSE TO VERY INTENSE CONVECTION LAY OVER CENTRAL BAY OF BENGAL. MINIMUM CLOUD TOP TEMPERATURE IS MINUS 93 DEG CELSIUS.

YESTERDAY'S CYCLONIC CIRCULATION OVER NORTH ANDAMAN SEA & NEIGHBOURHOOD PERSISTED OVER THE SAME REGION AT 0300 UTC OF TODAY, THE 5TH SEPTEMBER, 2024. HOWEVER, THE ASSOCIATED CIRCULATION EXTENDED UPTO 3.1 KM ABOVE MEAN SEA LEVEL.

SCATTERED TO BROKEN LOW AND MEDIUM CLOUDS WITH EMBEDDED INTENSE TO VERY INTENSE CONVECTION LAY OVER CENTRAL & ADJOINING SOUTH BAY OF BENGAL, ANDAMAN SEA AND TENASSERIM COAST. SCATTERED LOW AND MEDIUM CLOUDS WITH EMBEDDED MODERATE TO INTENSE CONVECTION LAY OVER NORTHEAST BAY OF BENGAL, REST OF SOUTH BAY OF BENGAL, ARAKAN COAST, GULF OF MARTABAN AND ISOLATED WEAK CONVECTION LAY OVER NORTHWEST BAY OF BENGAL.

***PROBABILITY OF CYCLOGENESIS (FORMATION OF DEPRESSION) DURING NEXT 168 HRS:**

24 HOURS	24-48 HOURS	48-72 HOURS	72-96 HOURS	96-120 HOURS	120-144 HOURS	144-168 HOURS
NIL	NIL	LOW	LOW	LOW	NIL	NIL

***NOTE: EVERY 24HR FORECAST IS VALID UPTO 0300 UTC (0830 IST) OF NEXT DAY**

ARABIAN SEA:

SCATTERED LOW AND MEDIUM CLOUDS WITH EMBEDDED ISOLATED WEAK TO MODERATE CONVECTION LAY OVER NORTHEAST ARABIAN SEA, GULF OF KUTCH, GULF OF CAMBAY, EASTCENTRAL & SOUTH ARABIAN SEA, LAKSHADWEEP ISLANDS AREA, MALDIVES AND COMORIN AREA.

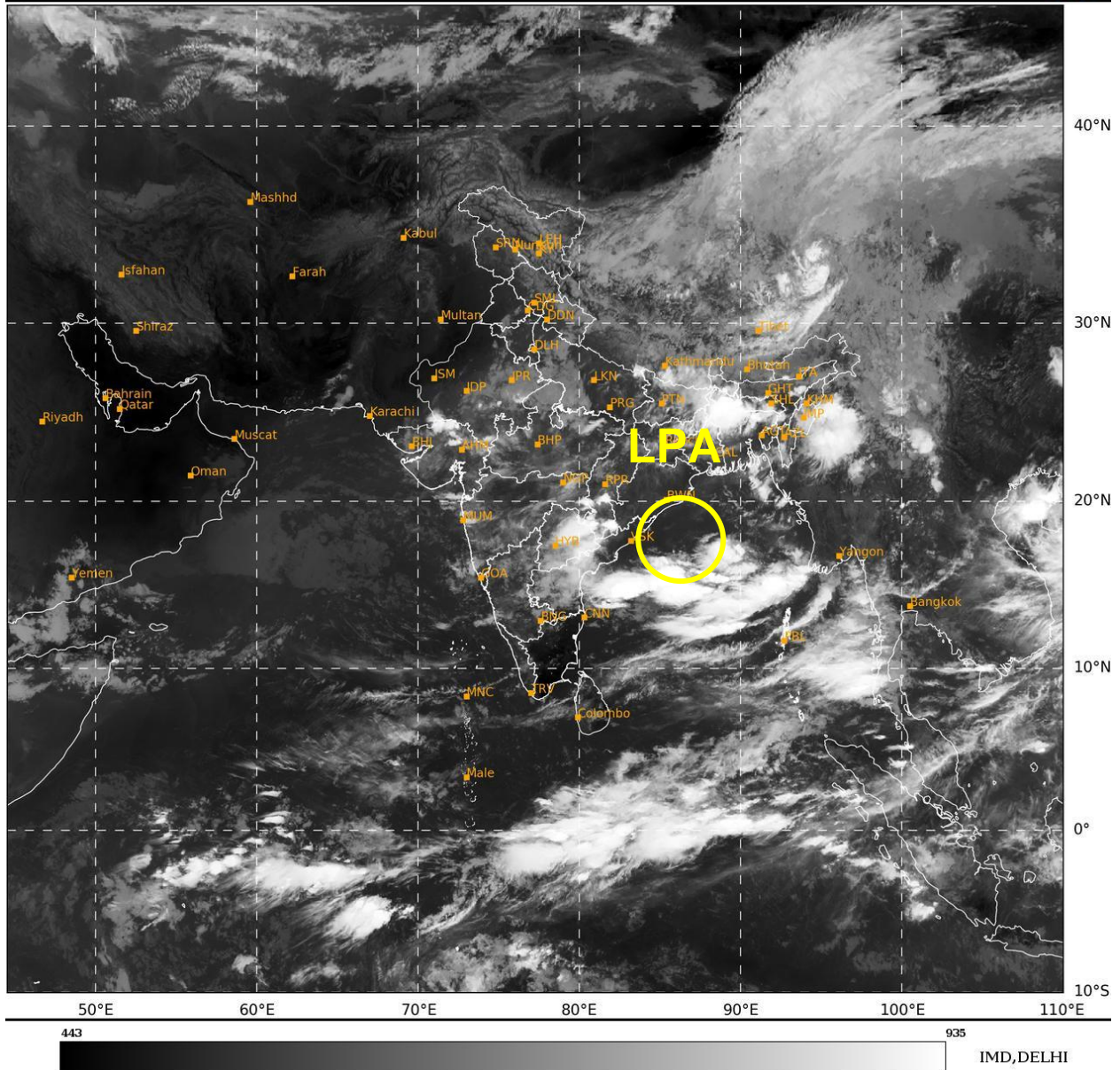
***PROBABILITY OF CYCLOGENESIS (FORMATION OF DEPRESSION) DURING NEXT 168 HRS:**

24 HOURS	24-48 HOURS	48-72 HOURS	72-96 HOURS	96-120 HOURS	120-144 HOURS	144-168 HOURS
NIL	NIL	NIL	NIL	NIL	NIL	NIL

***NOTE: EVERY 24HR FORECAST IS VALID UPTO 0300 UTC (0830 IST) OF NEXT DAY**

REMARKS:

THE CENTRE OF LOW PRESSURE AREA IS AROUND 17.7N/85.7E OVER WESTCENTRAL & ADJOINING NORTHWEST BAY OF BENGAL AND ESTIMATED CENTRAL PRESSURE OF THE SYSTEM IS 1002 HPA. KALINGAPATNAM (43105) REPORTED MEAN SEA LEVEL PRESSURE OF 1002.5 HPA WITH PRESSURE FALL IN PAST 24 HOURS AS -2.3 HPA AND MAXIMUM SUSTAINED WIND SPEED (MSW) OF 340⁰/02KT. A BUOY NEAR 17.7N/89.2E INDICATED MEAN SEA LEVEL PRESSURE OF 1003.5 HPA AND MSW OF 110⁰/3.1KT.



LPA: LOW PRESSURE AREA

Cloud distribution: (a) Isolated: <25%, Scattered:25-50%, Broken: 51-75%, Solid:>75%, Convection Intensity: (a) Weak: Cloud Top Temperature (CTT) >-25°C, (b) Moderate: CTT: - 25°C to -40°C, (c) Intense: CTT: - 41°C to -70°C and (d) Very Intense: : Less than -70°C
PROBABILITY OF CYCLOGENESIS (FORMATION OF DEPRESSION):NIL: 0%, LOW: 1-33%, , MODERATE: 34-66% AND HIGH: 67-100%
This is a guidance Bulletin for WMO/ESCAP Panel Member countries. Visit respective National websites for Country specific Bulletins