



**REGIONAL SPECIALISED METEOROLOGICAL CENTRE-TROPICAL CYCLONES, NEW DELHI
SPECIAL TROPICAL WEATHER OUTLOOK**

DEMS-RSMC TROPICAL CYCLONES NEW DELHI DATED 02.09.2024

SPECIAL TROPICAL WEATHER OUTLOOK FOR NORTH INDIAN OCEAN (THE BAY OF BENGAL AND THE ARABIAN SEA) VALID FOR NEXT 168 HOURS ISSUED AT 1500 UTC OF 02.09.2024 BASED ON 1200 UTC OF 02.09.2024.

WELL MARKED LOW PRESSURE AREA OVER CENTRAL PARTS OF VIDARBHA AND NEIGHBOURHOOD

THE DEPRESSION OVER EAST VIDARBHA AND ADJOINING TELANGANA MOVED WEST-NORTHWESTWARDS AND WEAKENED INTO A WELL MARKED LOW PRESSURE AREA OVER CENTRAL PARTS OF VIDARBHA AND NEIGHBOURHOOD AT 1200 UTC OF TODAY, THE 2ND SEPTEMBER.

IT IS LIKELY TO MOVE NEARLY NORTHWESTWARDS ACROSS VIDARBHA & ADJOINING WEST MADHYA PRADESH AND WEAKEN INTO A LOW PRESSURE AREA DURING NEXT 24 HOURS.

ASSOCIATED BROKEN LOW AND MEDIUM CLOUDS WITH EMBEDDED INTENSE TO VERY INTENSE CONVECTION LAY OVER WEST VIDARBHA, MARATHWADA, MADHYA MAHARASHTRA AND KONKAN. MINIMUM CTT IS MINUS 86 DEG CELSIUS.

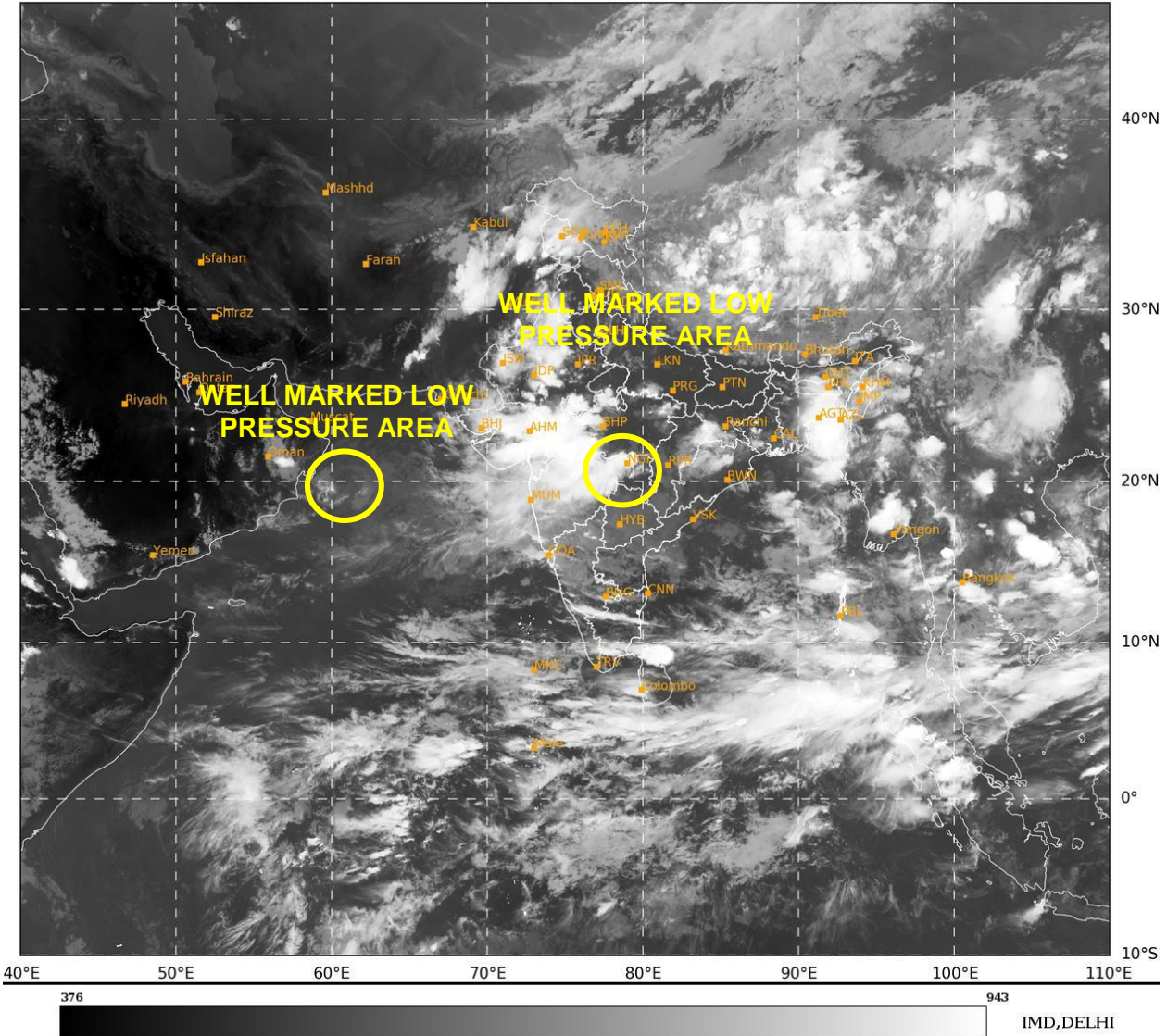
ASSOCIATED MAXIMUM SUSTAINED WIND SPEED IS 15 KTS GUSTING TO 20 KTS. ESTIMATED CENTRAL PRESSURE IS 998 HPA.

REMARKS:

THE LOW LEVEL VORTICITY IS AROUND $50-60 \times 10^{-5} \text{ S}^{-1}$ OVER VIDARBHA WITH EXTENSION UPTO MID TROPOSPHERIC LEVELS. LOW LEVEL CONVERGENCE IS $20 \times 10^{-5} \text{ S}^{-1}$ TO THE SOUTHWEST OF SYSTEM AREA. UPPER LEVEL DIVERGENCE IS $10 \times 10^{-5} \text{ S}^{-1}$ TO THE WEST OF SYSTEM AREA. WIND SHEAR IS MODERATE (15-20) OVER SYSTEM AREA AND ALONG FORECAST TRACK.

THIS IS LAST UPDATE IN ASSOCIATION WITH THIS SYSTEM. HOWEVER, REGULAR TROPICAL WEATHER OUTLOOK SHALL CONTINUE FROM RSMC NEW DELHI FROM 0600 UTC OF TOMORROW, THE 3RD SEPTEMBER.

(M SHARMA)
SCIENTIST-D
RSMC NEW DELHI



Cloud distribution: (a) Isolated: <25%, Scattered:25-50%, Broken: 51-75%, Solid:>75%, Convection Intensity: (a) Weak: Cloud Top Temperature (CTT) >-25°C, (b) Moderate: CTT: - 25°C to -40°C, (c) Intense: CTT: - 41°C to -70°C and (d) Very Intense: : Less than -70°C
PROBABILITY OF CYCLOGENESIS (FORMATION OF DEPRESSION):NIL: 0%, LOW: 1-33%, , MODERATE: 34-66% AND HIGH: 67-100%
This is a guidance Bulletin for WMO/ESCAP Panel Member countries. Visit respective National websites for Country specific Bulletins



OBSERVED TRACK OF DEPRESSION OVER WEST CENTRAL BAY OF BENGAL DURING 31ST AUGUST - 2ND SEPTEMBER, 2024



DATE/TIME IN UTC
 IST=UTC + 0530
L: LOW PRESSURE AREA
WML: WELL MARKED LOW PRESSURE AREA
D: DEPRESSION (17-27 KT)
DD: DEEP DEPRESSION (28-33 KT)
CS: CYCLONIC STORM (34-47 KT)
SCS: SEVERE CYCLONIC STORM (48-63KT)
VSCS: VERY SEVERE CYCLONIC STORM (64-89 KT)
ESCS: EXTREMELY SEVERE CYCLONIC STORM (90-119 KT)
SuCS: SUPER CYCLONIC STORM (≥ 120 KT)

- LESS THAN 34 KT
- 34-47 KT
- ≥ 48 KT
- OBSERVED TRACK
- FORECAST TRACK
- CONE OF UNCERTAINTY

Cloud distribution: (a) Isolated: <25%, Scattered:25-50%, Broken: 51-75%, Solid:>75%, Convection Intensity: (a) Weak: Cloud Top Temperature (CTT) >-25°C, (b) Moderate: CTT: - 25°C to -40°C, (c) Intense: CTT: - 41°C to -70°C and (d) Very Intense: : Less than -70°C
PROBABILITY OF CYCLOGENESIS (FORMATION OF DEPRESSION):NIL: 0%, LOW: 1-33%, , MODERATE: 34-66% AND HIGH: 67-100%
 This is a guidance Bulletin for WMO/ESCAP Panel Member countries. Visit respective National websites for Country specific Bulletins



OBSERVED TRACK OF CYCLONIC STORM ASNA OVER NORTH ARABIAN SEA DURING 25TH AUGUST-2ND SEPTEMBER, 2024.

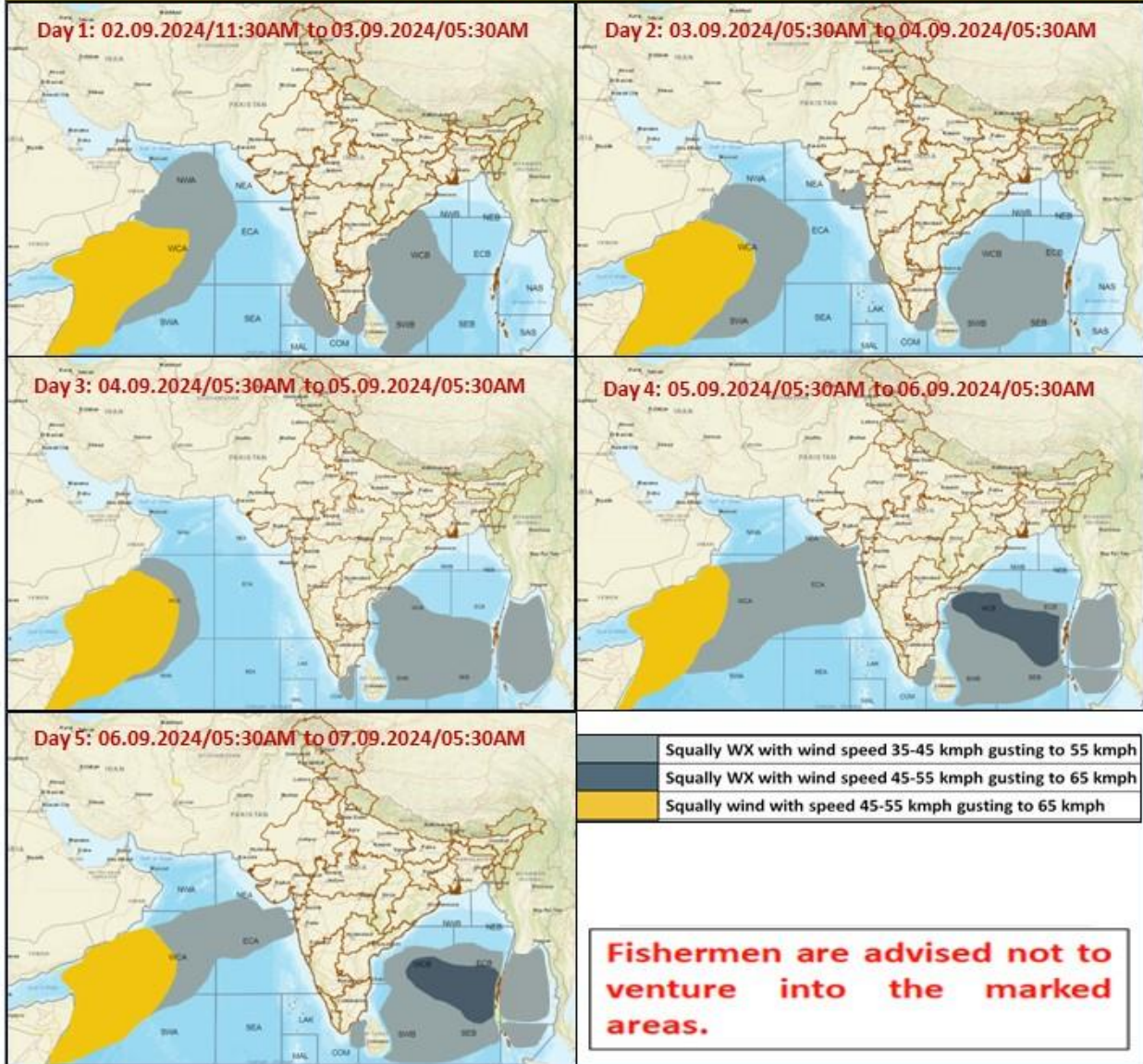


DATE/TIME IN UTC
 IST=UTC + 0530
 L: LOW PRESSURE AREA
 WML: WELL MARKED LOW PRESSURE AREA
 D: DEPRESSION (17-27 KT)
 DD: DEEP DEPRESSION (28-33 KT)
 CS: CYCLONIC STORM (34-47 KT)
 SCS: SEVERE CYCLONIC STORM (48-63KT)
 VSCS: VERY SEVERE CYCLONIC STORM (64-89 KT)
 ESCS: EXTREMELY SEVERE CYCLONIC STORM (90-119 KT)
 SuCS: SUPER CYCLONIC STORM (≥ 120 KT)

- LESS THAN 34 KT
- 34-47 KT
- ≥ 48 KT
- OBSERVED TRACK
- FORECAST TRACK
- CONE OF UNCERTAINTY



Fishermen Warning Graphics



Cloud distribution: (a) Isolated: <25%, Scattered:25-50%, Broken: 51-75%, Solid:>75%, Convection Intensity: (a) Weak: Cloud Top Temperature (CTT) >-25°C, (b) Moderate: CTT: - 25°C to -40°C, (c) Intense: CTT: - 41°C to -70°C and (d) Very Intense: : Less than -70°C
 PROBABILITY OF CYCLOGENESIS (FORMATION OF DEPRESSION):NIL: 0%, LOW: 1-33%, , MODERATE: 34-66% AND HIGH: 67-100%
 This is a guidance Bulletin for WMO/ESCAP Panel Member countries. Visit respective National websites for Country specific Bulletins