



**REGIONAL SPECIALISED METEOROLOGICAL CENTRE-TROPICAL CYCLONES, NEW DELHI
TROPICAL CYCLONE ADVISORY NO. 15**

DEMS-RSMC SPECIAL TROPICAL CYCLONES NEW DELHI DATED 27.05.2024

FROM: RSMC –TROPICAL CYCLONES, NEW DELHI

TO:

**STORM WARNING CENTRE, NAYPYI TAW (MYANMAR)
STORM WARNING CENTRE, BANGKOK (THAILAND)
STORM WARNING CENTRE, COLOMBO (SRILANKA)
STORM WARNING CENTRE, DHAKA (BANGLADESH)
STORM WARNING CENTRE, KARACHI (PAKISTAN)
METEOROLOGICAL OFFICE, MALE (MALDIVES)
OMAN METEOROLOGICAL DEPARTMENT,
MUSCAT (THROUGH RTH JEDDAH)
YEMEN METEOROLOGICAL SERVICES,
REPUBLIC OF YEMEN (THROUGH RTH JEDDAH)
NATIONAL CENTRE FOR METEOROLOGY, UAE (THROUGH RTH JEDDAH)
PRESIDENCY OF METEOROLOGY AND ENVIRONMENT,
SAUDI ARABIA (THROUGH RTH JEDDAH)
IRAN METEOROLOGICAL ORGANISATION, (THROUGH RTH JEDDAH)
QATAR METEOROLOGICAL DEPARTMENT (THROUGH RTH JEDDAH)**

TROPICAL CYCLONE ADVISORY NO. 15 FOR NORTH INDIAN OCEAN (THE BAY OF BENGAL AND ARABIAN SEA) VALID FOR NEXT 120 HOURS ISSUED AT 0900 UTC OF 27.05.2024 BASED ON 0600 UTC OF 27.05.2024

SUB: CYCLONIC STORM “REMAL” PRONOUNCED AS “RE-MAL” OVER BANGLADESH AND ADJOINING WEST BENGAL

THE CYCLONIC STORM “REMAL” (PRONOUNCED AS “RE-MAL”) OVER COASTAL BANGLADESH AND ADJOINING COASTAL WEST BENGAL MOVED NEARLY NORTHWARDS, WITH A SPEED OF 8 KMPH DURING PAST 06 HOURS AND LAY CENTERED AT 0600 UTC OF TODAY, THE 27TH MAY, 2024 OVER BANGLADESH AND ADJOINING WEST BENGAL, NEAR **LATITUDE 23.0°N AND **LONGITUDE 89.2°E** ABOUT 65 KM NORTHWEST OF MONGLA (41958, BANGLADESH), 110 KM NORTHEAST OF KOLKATA (42807, WEST BENGAL), 100 KM NORTH-NORTHEAST OF CANNING (42812, WEST BENGAL), 150 KM NORTHWEST OF KHEPUPARA (41984, BANGLADESH) AND 150 KM SOUTHWEST OF DHAKA (41923, BANGLADESH).**

THE SYSTEM IS LIKELY TO MOVE NORTH-NORTHEASTWARDS, AND GRADUALLY WEAKEN FURTHER INTO DEEP DEPRESSION BY 1200 UTC OF TODAY, THE 27TH MAY 2024. THE CYCLONE IS UNDER THE CONTINUOUS SURVEILLANCE OF KOLKATA DOPPLER WEATHER RADAR.

FORECAST TRACK AND INTENSITY ARE GIVEN IN THE FOLLOWING TABLE:

DATE/TIME (UTC)	POSITION (LAT. °N/ LONG. °E)	MAXIMUM SUSTAINED SURFACE WIND SPEED (KMPH)	CATEGORY OF CYCLONIC DISTURBANCE
27.05.24/0600	23.0/89.2	65-75 GUSTING TO 85	CYCLONIC STORM
27.05.24/1200	23.6/89.4	50-60 GUSTING TO 70	DEEP DEPRESSION
27.05.24/1800	24.2/90.0	40-50 GUSTING TO 60	DEPRESSION
28.05.24/0000	24.8/90.7	35-45 GUSTING TO 55	DEPRESSION
28.05.24/0600	25.4/91.5	25-35 GUSTING TO 45	WELL MARKED LOW PRESSURE AREA

AS PER INSAT-3D IMAGERY VORTEX (REMA) IS LOCATED OVER SOUTH BANGLADESH & NEIGHBOURHOOD. ASSOCIATED BROKEN LOW/MEDIUM CLOUDS WITH EMBEDDED INTENSE TO VERY INTENSE CONVECTION OVER NORTH BAY OF BENGAL (CLOUD TOP TEMPERATURE IS -93 DEG CEL) COASTAL ODISHA, GANGETIC WEST BENGAL, MIZORAM, TRIPURA AND BANGLADESH.

AS PER LATEST OBSERVATIONS, ESTIMATED CENTRAL PRESSURE IS 980 HPA AT 0600 UTC OF 27TH MAY. ESTIMATED MAXIMUM SUSTAINED WIND SPEED IS 35 KNOTS GUSTING TO 45 KNOTS. THE CYCLONE IS UNDER THE CONTINUOUS SURVEILLANCE OF KOLKATA DOPPLER WEATHER RADAR.

WARNINGS (GRAPHICS ATTACHED):

HEAVY RAINFALL WARNING:

(A) WEST BENGAL: LIGHT TO MODERATE RAINFALL AT MOST PLACES WITH **HEAVY TO VERY HEAVY RAINFALL** AT A FEW PLACES IS LIKELY OVER COASTAL DISTRICTS OF WEST BENGAL AND EASTERN DISTRICTS OF GANGETIC WEST BENGAL ADJACENT TO BANGLADESH ON 27TH MAY. THE PEAK RAINFALL ACTIVITY IS LIKELY TILL NOON OF 27TH MAY. LIGHT TO MODERATE RAINFALL AT MOST PLACES WITH **HEAVY TO VERY HEAVY RAINFALL** AT ISOLATED PLACES LIKELY OVER EASTERN DISTRICTS OF SUB-HIMALAYAN WEST BENGAL ON 27TH AND 28TH MAY.

(B) NORTHEASTERN STATES: LIGHT TO MODERATE RAINFALL AT MOST PLACES WITH **HEAVY TO VERY HEAVY RAINFALL** AT ISOLATED PLACES IS LIKELY OVER ASSAM, MEGHALAYA, ARUNACHAL PRADESH, NAGALAND, MIZORAM, MANIPUR & TRIPURA ON 27TH & 28TH MAY. ISOLATED **EXTREMELY HEAVY RAINFALL** (≥ 20 CM) IS ALSO LIKELY OVER ASSAM, MEGHALAYA ON 27TH & 28TH MAY, ARUNACHAL PRADESH ON 28TH MAY AND MIZORAM & TRIPURA ON 27TH MAY.

WIND WARNING:

(A) BAY OF BENGAL

PREVAILING GALE WIND SPEED REACHING 65-75 KMPH GUSTING TO 85 KMPH TO BECOME SQUALLY WIND SPEED REACHING 50-60 KMPH GUSTING TO 70 KMPH BY EVENING OF 27TH MAY.

SQUALLY WIND SPEED REACHING 40-50 KMPH GUSTING TO 60 KMPH WILL CONTINUE TO PREVAIL OVER ADJOINING CENTRAL BAY OF BENGAL TILL EVENING OF 27TH MAY.

(B) ALONG & OFF BANGLADESH AND WEST BENGAL COASTS

GALE WIND SPEED REACHING 65-75 KMPH GUSTING TO 85 KMPH WILL CONTINUE TO PREVAIL ALONG & OFF BANGLADESH AND ADJOINING WEST BENGAL COASTS DURING NEXT 3 HOURS. IT IS LIKELY TO DECREASE BECOMING SQUALLY WIND REACHING 50-60 KMPH GUSTING TO 70 KMPH BY EVENING OF 27TH MAY AND DECREASE GRADUALLY THEREAFTER.

GALE WIND SPEED REACHING 60-70 KMPH GUSTING TO 80 KMPH WILL CONTINUE TO PREVAIL OVER HOWRAH, HOOGLY & KOLKATA, OVER EAST MEDINIPUR DURING NEXT 6 HOURS AND DECREASE GRADUALLY THEREAFTER.

(C) ALONG & OFF NORTH ODISHA COASTS

SQUALLY WIND SPEED REACHING 40-50 KMPH GUSTING TO 60 KMPH IS LIKELY TO PREVAIL DURING NEXT 6 HOURS AND DECREASE GRADUALLY THEREAFTER.

(D) NORTHEASTERN STATES

SQUALLY WIND SPEED REACHING 50-60 KMPH GUSTING TO 70 KMPH IS LIKELY OVER MIZORAM TRIPURA & SOUTH MANIPUR ON 27TH MAY AND 40-50 KMPH GUSTING TO 60 KMPH IS LIKELY OVER SOUTH ASSAM AND MEGHALAYA ON 27TH MAY

SEA CONDITION WARNING:

(A) NORTH BAY OF BENGAL

PREVAILING HIGH SEA CONDITION IS LIKELY TO IMPROVE GRADUALLY BECOMING VERY ROUGH TO ROUGH BY EVENING OF 27TH MAY AND GRADUALLY IMPROVE THEREAFTER.

(B) ALONG & OFF BANGLADESH AND WEST BENGAL COASTS

PREVAILING HIGH SEA CONDITION ALONG & OFF BANGLADESH AND WEST BENGAL COASTS IS LIKELY TO GRADUALLY IMPROVE BECOMING VERY ROUGH TO ROUGH BY EVENING OF 27TH MAY AND GRADUALLY IMPROVE THEREAFTER.

(C) ALONG & OFF NORTH ODISHA COAST

ROUGH SEA CONDITION IS LIKELY ALONG & OFF NORTH ODISHA COAST DURING NEXT 6 HOURS AND IMPROVE THEREAFTER.

(D) CENTRAL BAY OF BENGAL

ROUGH SEA CONDITION IS LIKELY TO PREVAIL OVER CENTRAL BAY OF BENGAL DURING NEXT 6 HOURS AND IMPROVE THEREAFTER.

FISHERMEN WARNING (GRAPHICS ATTACHED):

FISHERMEN ARE ADVISED NOT TO VENTURE INTO NORTH BAY OF BENGAL ALONG AND OFF WEST BENGAL AND BANGLADESH COASTS ON 27TH MAY

REMARKS:

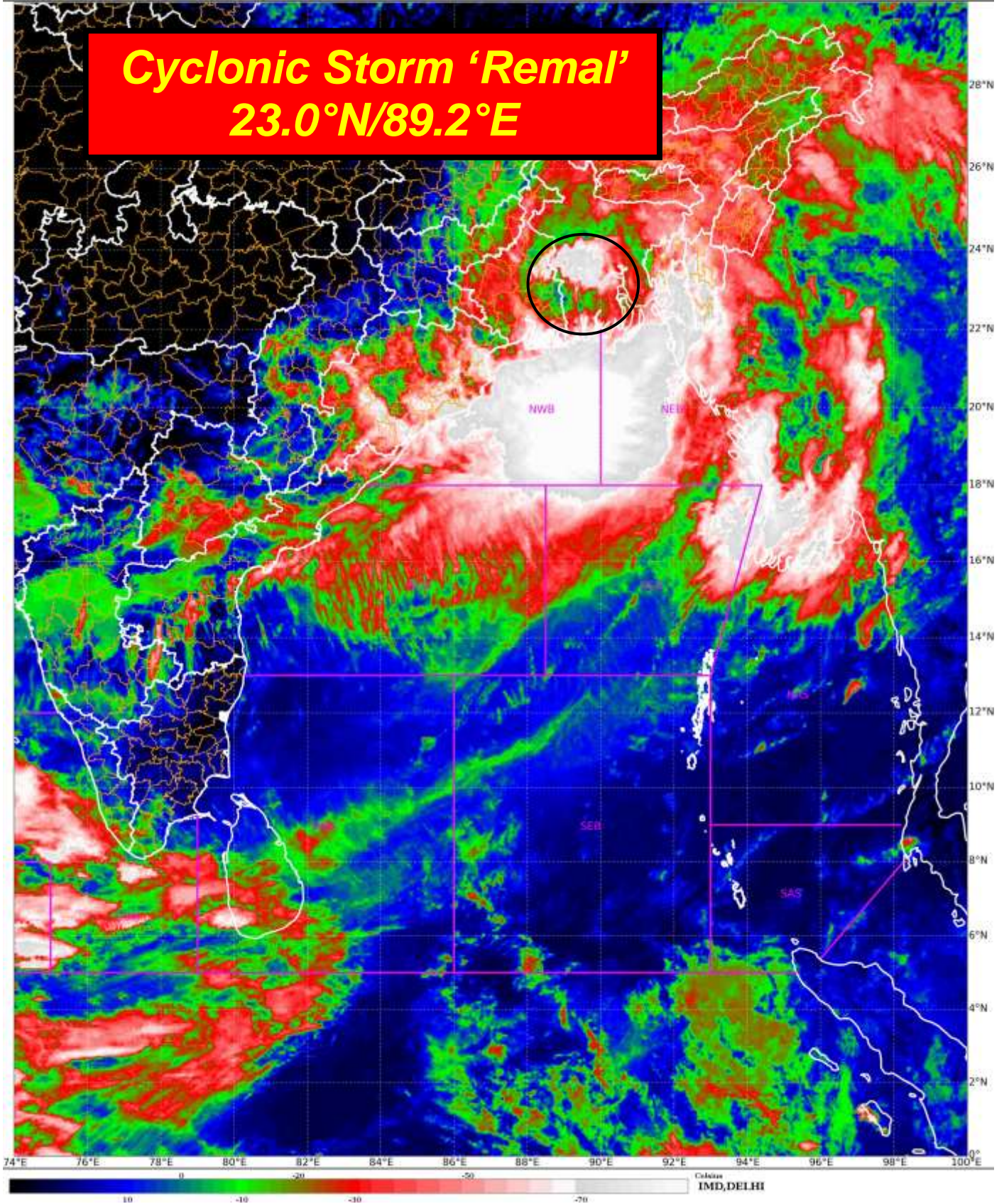
LOW LEVEL VORTICITY IS ABOUT $250 \times 10^{-5} \text{S}^{-1}$ OVER NORTH BAY OF BENGAL & ADJOINING COASTAL BANGLADESH AND WEST BENGAL WITH VERTICAL EXTENSION UPTO 200 HPA LEVEL. LOW LEVEL CONVERGENCE IS ABOUT $40 \times 10^{-5} \text{S}^{-1}$ TO THE SOUTH OF THE SYSTEM CENTER. UPPER-LEVEL DIVERGENCE IS ABOUT $20 \times 10^{-5} \text{S}^{-1}$ TO THE EAST OF THE SYSTEM CENTRE. VERTICAL WIND SHEAR (VWS) IS LOW (05-10 KT) ALONG THE FORECAST TRACK.

THE SYSTEM IS LIKELY TO MOVE NEARLY NORTH-NORTHEASTWARDS AND GRADUALLY WEAKEN.

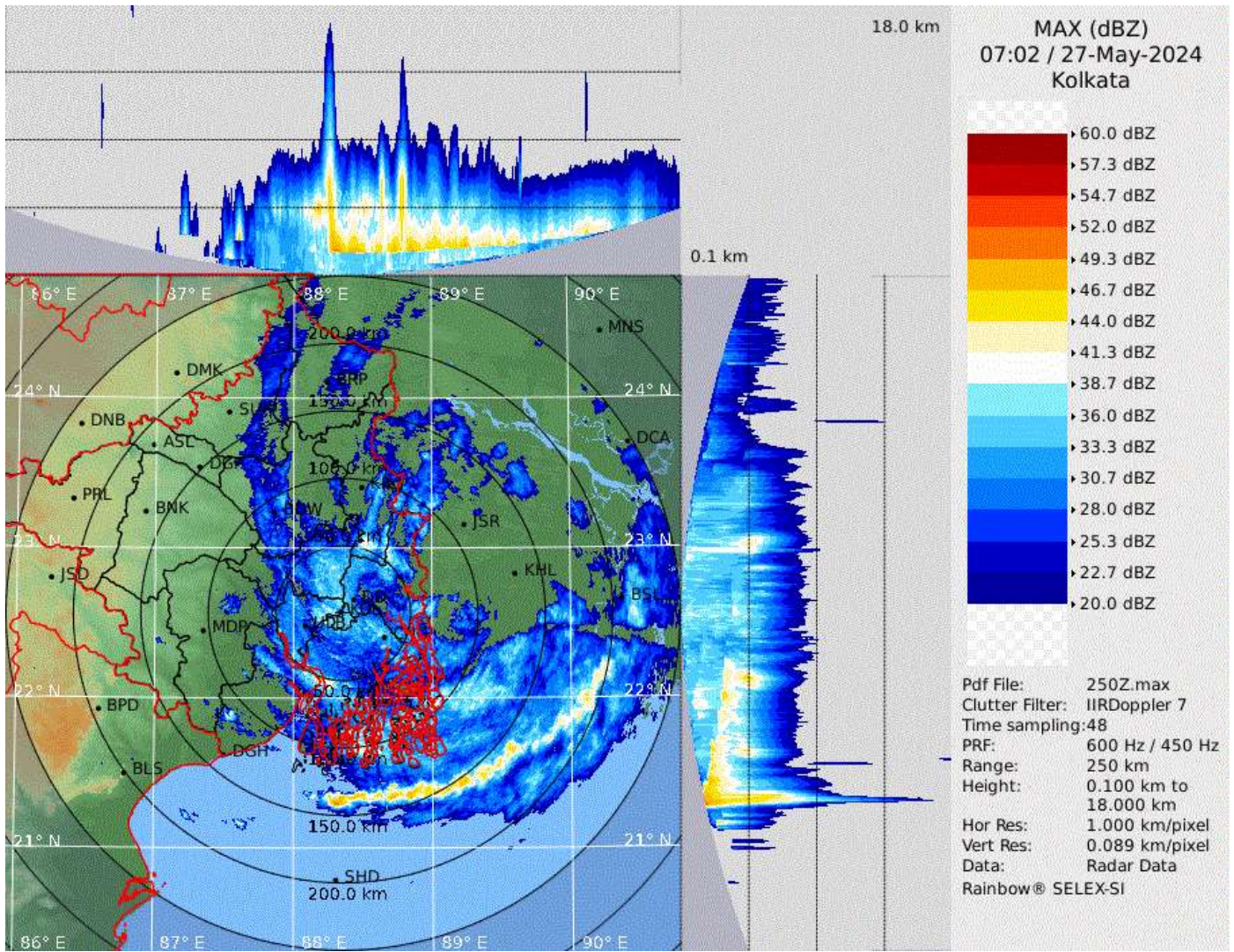
AKHIL SRIVASTAVA
SCIENTIST D
RSMC NEW DELHI



Cyclonic Storm 'Remal' 23.0°N/89.2°E



Cloud distribution: (a) Isolated: <25%, Scattered:25-50%, Broken: 51-75%, Solid:>75%, Convection Intensity: (a) Weak: Cloud Top Temperature (CTT) >-25°C, (b) Moderate: CTT: - 25°C to -40°C, (c) Intense: CTT: - 41°C to -70°C and (d) Very Intense: : Less than -70°C
PROBABILITY OF CYCLOGENESIS (FORMATION OF DEPRESSION):NIL: 0%, LOW: 1-33%, , MODERATE: 34-66% AND HIGH: 67-100%
This is a guidance Bulletin for WMO/ESCAP Panel Member countries. Visit respective National websites for Country specific Bulletins

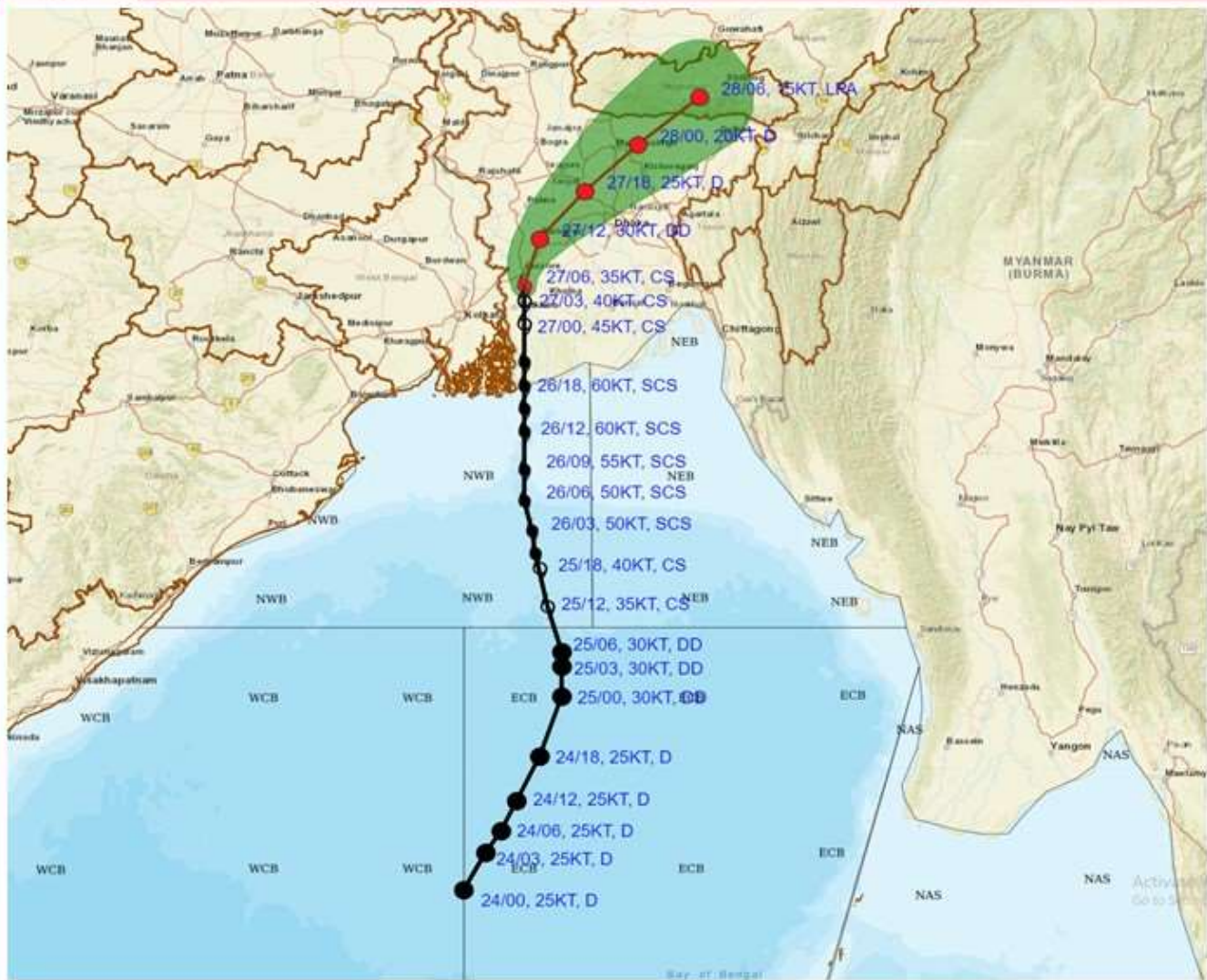


Kolkata Radar Image 0700 UTC of today, the 27th May

Cloud distribution: (a) Isolated: <25%, Scattered:25-50%, Broken: 51-75%, Solid:>75%, Convection Intensity: (a) Weak: Cloud Top Temperature (CTT) >-25°C, (b) Moderate: CTT: - 25°C to -40°C, (c) Intense: CTT: - 41°C to -70°C and (d) Very Intense: : Less than -70°C
PROBABILITY OF CYCLOGENESIS (FORMATION OF DEPRESSION):NIL: 0%, LOW: 1-33%, , MODERATE: 34-66% AND HIGH: 67-100%
 This is a guidance Bulletin for WMO/ESCAP Panel Member countries. Visit respective National websites for Country specific Bulletins



FORECAST TRACK ALONGWITH CONE OF UNCERTAINTY IN ASSOCIATION WITH CYCLONIC STORM 'REMAL' OVER BANGLADESH AND ADJOINING WEST BENGAL BASED ON 0600 UTC (1130 IST) OF 27TH MAY 2024.



DATE/TIME IN UTC
 IST=UTC + 0530
 L: LOW PRESSURE AREA
 WML: WELL MARKED LOW PRESSURE AREA
 D: DEPRESSION (17-27 KT)
 DD: DEEP DEPRESSION (28-33 KT)
 CS: CYCLONIC STORM (34-47 KT)
 SCS: SEVERE CYCLONIC STORM (48-63KT)
 VSCS: VERY SEVERE CYCLONIC STORM (64-89 KT)
 ESCS: EXTREMELY SEVERE CYCLONIC STORM (90-119 KT)
 SuCS: SUPER CYCLONIC STORM (≥ 120 KT)

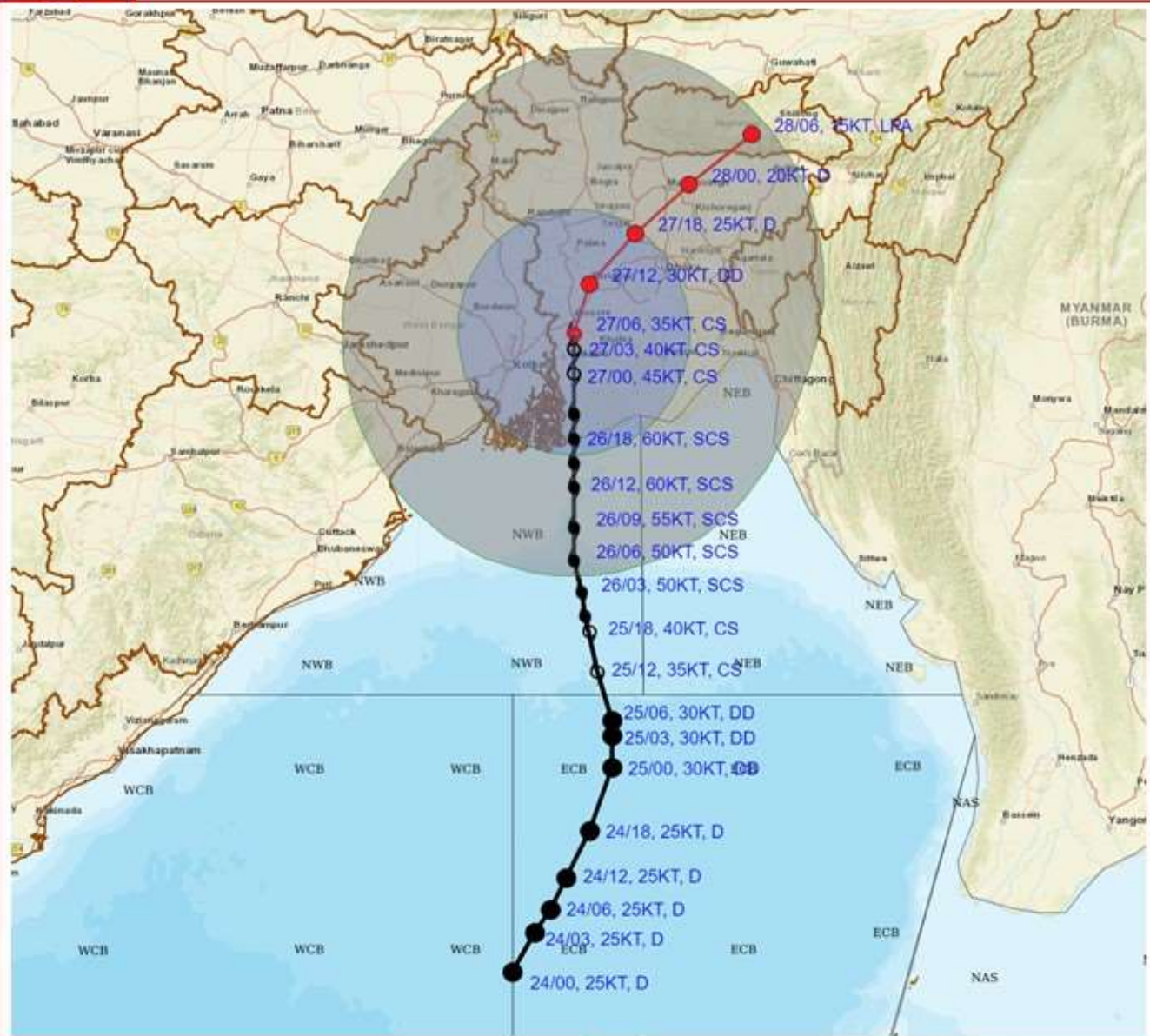
- LESS THAN 34 KT
- 34-47 KT
- ⊙ ≥ 48 KT
- OBSERVED TRACK
- FORECAST TRACK
- ▲ CONE OF UNCERTAINTY

Forecast Date and Time (UTC)	DISTANCE (KM) AND DIRECTION FROM STATIONS			
	Canning	Khepupara	Sagar Island	Mongla
27.05.24/0600	100, NNE	160, NW	200, NE	60, NW
27.05.24/1200	170, NNE	200, NNW	260, NNE	120, N
27.05.24/1800	260, NNE	250, N	350, NE	190, NNE
28.05.24/0000	360, NE	320, N	450, NE	280, NNE
28.05.24/0600	460, NE	410, NNE	550, NE	380, NNE

Cloud distribution: (a) Isolated: <25%, Scattered:25-50%, Broken: 51-75%, Solid:>75%, Convection Intensity: (a) Weak: Cloud Top Temperature (CTT) >-25°C, (b) Moderate: CTT: - 25°C to -40°C, (c) Intense: CTT: - 41°C to -70°C and (d) Very Intense: : Less than -70°C
 PROBABILITY OF CYCLOGENESIS (FORMATION OF DEPRESSION):NIL: 0%, LOW: 1-33%, , MODERATE: 34-66% AND HIGH: 67-100%
 This is a guidance Bulletin for WMO/ESCAP Panel Member countries. Visit respective National websites for Country specific Bulletins



FORECAST TRACK ALONGWITH QUADRANT WIND DISTRIBUTION IN ASSOCIATION WITH CYCLONIC STORM 'REMAL' OVER BANGLADESH AND ADJOINING WEST BENGAL BASED ON 0600 UTC (1130 IST) OF 27TH MAY 2024.



DATE/TIME IN UTC
 IST=UTC + 0530
 L: LOW PRESSURE AREA
 WML: WELL MARKED LOW PRESSURE AREA
 D: DEPRESSION (17-27 KT)
 DD: DEEP DEPRESSION (28-33 KT)
 CS: CYCLONIC STORM (34-47 KT)
 SCS: SEVERE CYCLONIC STORM (48-63KT)
 VSCS: VERY SEVERE CYCLONIC STORM (64-89 KT)
 ESCS: EXTREMELY SEVERE CYCLONIC STORM (90-119 KT)
 SuCS: SUPER CYCLONIC STORM (≥ 120 KT)

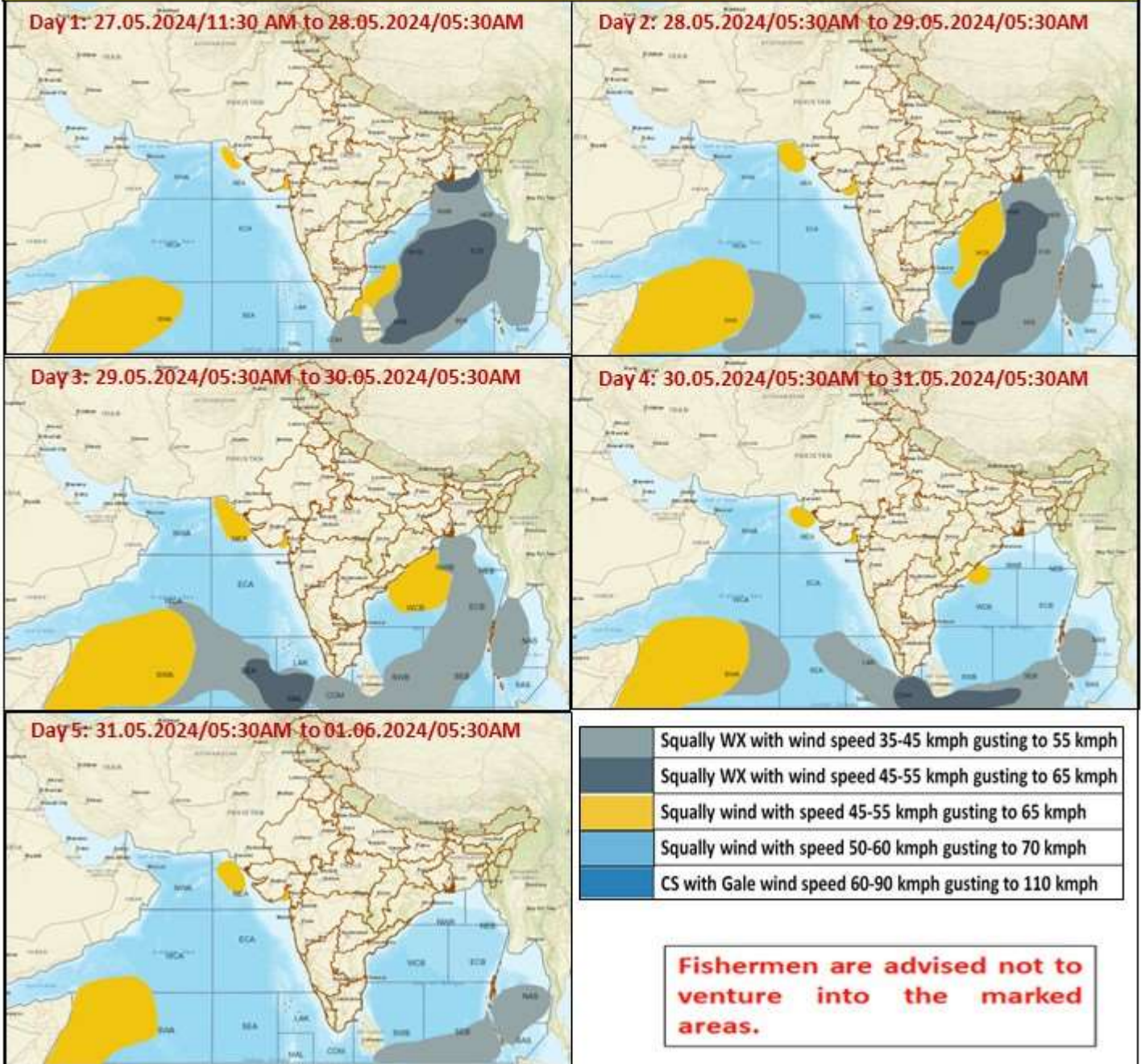
● LESS THAN 34 KT
 ○ 34-47 KT
 ● ≥ 48 KT
 — OBSERVED TRACK
 — FORECAST TRACK
 — CONE OF UNCERTAINTY
 AREA OF MAXIMUM SUSTAINED WIND SPEED:
 ■ 28-33 KT (52-61 KMPH)
 ■ 34-49 KT (62-91 KMPH)
 ■ 50-63 KT (92-117 KMPH)
 ■ ≥ 64 KT (≥118 KMPH)

IMPACT OVER THE SEA

MSW (knot/kmph)	Impact	Action
28-33 (52-61)	Very rough seas	Total suspension of fishing operations
34-49 (62-91)	High to very high seas	Total suspension of fishing operations
50-63 (92-117)	Very high seas	Total suspension of fishing operations
≥ 64 (≥118)	Phenomenal	Total suspension of fishing operations

Cloud distribution: (a) Isolated: <25%, Scattered:25-50%, Broken: 51-75%, Solid:>75%, Convection Intensity: (a) Weak: Cloud Top Temperature (CTT) >-25°C, (b) Moderate: CTT: - 25°C to -40°C, (c) Intense: CTT: - 41°C to -70°C and (d) Very Intense: : Less than -70°C
 PROBABILITY OF CYCLOGENESIS (FORMATION OF DEPRESSION):NIL: 0%, LOW: 1-33%, , MODERATE: 34-66% AND HIGH: 67-100%
 This is a guidance Bulletin for WMO/ESCAP Panel Member countries. Visit respective National websites for Country specific Bulletins

Fishermen Warning Graphics



Cloud distribution: (a) Isolated: <25%, Scattered:25-50%, Broken: 51-75%, Solid:>75%, Convection Intensity: (a) Weak: Cloud Top Temperature (CTT) >-25°C, (b) Moderate: CTT: - 25°C to -40°C, (c) Intense: CTT: - 41°C to -70°C and (d) Very Intense: : Less than -70°C
 PROBABILITY OF CYCLOGENESIS (FORMATION OF DEPRESSION):NIL: 0%, LOW: 1-33%, , MODERATE: 34-66% AND HIGH: 67-100%
 This is a guidance Bulletin for WMO/ESCAP Panel Member countries. Visit respective National websites for Country specific Bulletins