



Government of India  
Ministry of Earth Sciences



India Meteorological Department

## PRESS RELEASE-10

Time of issue: 1130 hours IST

Dated: 17<sup>th</sup> September, 2024

### Sub: Depression over adjoining north Chhattisgarh and Jharkhand

Yesterday's Deep Depression over Gangetic West Bengal and adjoining Jharkhand moved nearly west-northwestwards, weakened into a **Depression over Jharkhand and adjoining north Chhattisgarh** in the early morning (0530 hours IST) and hours and lay centered at 0830 hours IST of today, the 17<sup>th</sup> September 2024, over **Northeast Chhattisgarh and adjoining Jharkhand** near latitude 23.7° N and longitude 83.7° E, around 50 km southwest of Daltonganj (Jharkhand), 80 km northeast of Ambikapur (Chhattisgarh), 200 km east-southeast of Sidhi (Madhya Pradesh), 210 km east-northeast of Pendra Road (Chhattisgarh) and 290 km east of Umariya (Madhya Pradesh).

It is likely to continue to move west-northwestwards across north Chhattisgarh, south Uttar Pradesh and adjoining northeast Madhya Pradesh and weaken into a Well-Marked Low Pressure Area during next 12 hours.

#### Warnings:

##### (i) Rainfall warning

**Jharkhand:** Light to moderate rainfall at most places with **heavy rainfall** at isolated places over Jharkhand on 17<sup>th</sup> September.

**Bihar:** Light to moderate rainfall at most places with **heavy rainfall** at isolated places is very likely over South Bihar on 17<sup>th</sup> September.

**Uttar Pradesh:** Light to moderate rainfall at many places with **heavy to very heavy rainfall** at isolated places over Southeast Uttar Pradesh on 17<sup>th</sup> September. Light to moderate rainfall at many places with **heavy rainfall** at isolated places over Southwest Uttar Pradesh on 17<sup>th</sup> and 18<sup>th</sup> September.

**Madhya Pradesh:** Light to moderate rainfall at most places with **heavy to very heavy rainfall** at isolated places is likely over North Madhya Pradesh on 17<sup>th</sup> September and **heavy rainfall** at isolated places on 18<sup>th</sup> September over Northwest Madhya Pradesh.

**Chhattisgarh:** Light to moderate rainfall at most places with **heavy rainfall** at isolated places over North Chhattisgarh on 17<sup>th</sup> September.

**East Rajasthan:** Light to moderate rainfall at many places with **heavy rainfall** at isolated places on 17<sup>th</sup> September.

##### (ii) Flash Flood Guidance: (Graphics Attached)

#### 24 hours Outlook for the Flash Flood Risk (FFR) till 0530 IST of 18-09-2024:

Low to Moderate flash flood risk likely over few watersheds & neighbourhoods of following Met Sub-divisions during next 24 hours.

Jharkhand - Garhwa district.

**Contact:** Cyclone Warning Division, Office of the Director General of Meteorology, India Meteorological Department, Ministry of Earth Sciences, E-mail: [cyclonewarningdivision@gmail.com](mailto:cyclonewarningdivision@gmail.com), Website: [rsmcnewdelhi.imd.gov.in](http://rsmcnewdelhi.imd.gov.in), Spatial rainfall distribution: Isolated: <25%, A few: 26-50%, Many: 51-75%, Most: 76-100%, Rainfall amount (mm): Heavy rain: 64.5 – 115.5, Very heavy rain: 115.6 – 204.4, Extremely heavy rain: 204.5 or more.

Bihar - Bhabua and Rohtas districts.

East Uttar Pradesh - Chandauli, Mirzapur, Prayagraj and Sonbhadra districts.

East Madhya Pradesh - Anuppur, Dindori, Rewa, Satna, Shahdol, Sidhi, Singrauli and Umaria districts.

Chhattisgarh - Korea and Surajpur districts.

Surface runoff/ Inundation may occur at some fully saturated soils and low-lying areas over

Area of Concern due to expected rainfall occurrence in next 24 hours.

**(iii) Wind warning:**

Squally wind speed reaching 40-50 kmph gusting to 60 kmph over North Chhattisgarh and adjoining Southeast Uttar Pradesh & Jharkhand & till 17<sup>th</sup> September evening and decrease thereafter.

**Impact Expected (Jharkhand, North Chhattisgarh, South Bihar, Northeast Madhya Pradesh and southeast Uttar Pradesh due to heavy rainfall and strong winds)**

- ✓ Localized Flooding of roads, water logging in low lying areas and closure of underpasses mainly in urban areas of the above region.
- ✓ Occasional reduction in visibility due to heavy rainfall.
- ✓ Disruption of traffic in major cities and roadways due to water logging in roads and poor visibility due to heavy rain leading to increased travel time and incidents
- ✓ Likely disruption of inland water transportation like small boats and trawlers.
- ✓ Minor damage to kutcha roads.
- ✓ Possibilities of damage to vulnerable structure.
- ✓ Localized Landslides/Mudslides/landslips/mud slips/land sinks/mud sinks.
- ✓ Damage to horticulture and standing crops in some areas due to inundation and wind.
- ✓ It may lead to riverine flooding in some river catchments (for riverine flooding please visit Web page of CWC)

**Action Suggested (Jharkhand, North Chhattisgarh, South Bihar and North Madhya Pradesh, southeast Uttar Pradesh due to heavy rainfall and strong winds)**

- ✓ Judicious regulation of surface transports including railways.
- ✓ Check for traffic congestion on your route before leaving for your destination.
- ✓ Follow any traffic advisories that are issued in this regard.
- ✓ Avoid going to areas that face the water logging problems often.
- ✓ Avoid staying in vulnerable structure.

**Agromet advisories for Heavy Rainfall likely over various parts of the country**

- ✓ Provide mechanical support to horticultural crops & staking to vegetables.
- ✓ Keep the harvested produce at safer places.

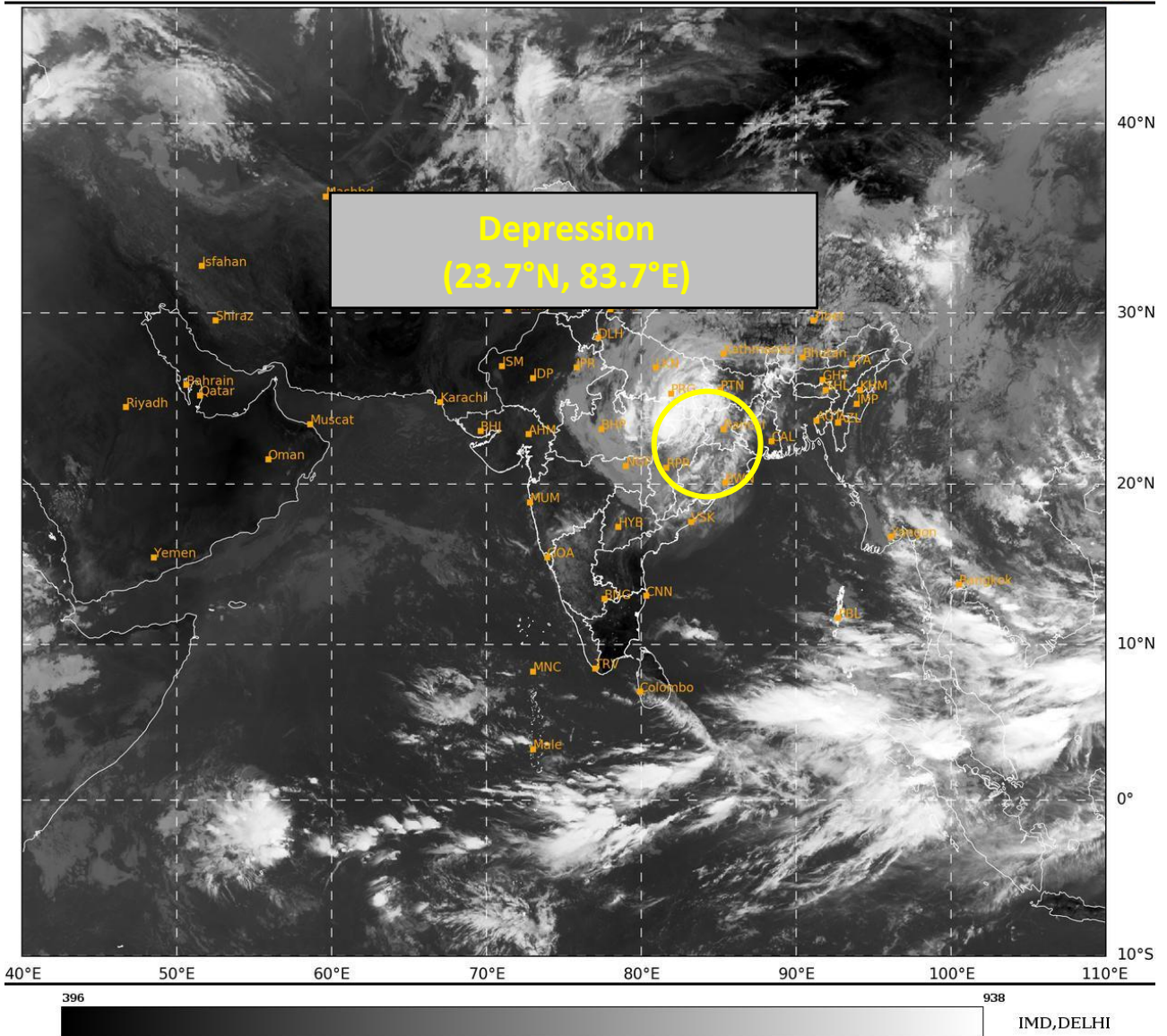
*All associated graphics have been kept in Annexure-I. The 24 hours accumulated realised rainfall ( $\geq 7$  cm) ending at 0830 hours IST of 17<sup>th</sup> September is kept in Annexure-II.*

*Next Press Release will be issued at 1430 hours IST of tomorrow, the 18th September, 2024.*

**Contact: Cyclone Warning Division, Office of the Director General of Meteorology, India Meteorological Department, Ministry of Earth Sciences, E-mail: [cyclonewarningdivision@gmail.com](mailto:cyclonewarningdivision@gmail.com), Website: [rsmcnewdelhi.imd.gov.in](http://rsmcnewdelhi.imd.gov.in), Spatial rainfall distribution: Isolated: <25%, A few: 26-50%, Many: 51-75%, Most: 76-100%, Rainfall amount (mm): Heavy rain: 64.5 – 115.5, Very heavy rain: 115.6 – 204.4, Extremely heavy rain: 204.5 or more.**

SAT : INSAT-3DR IMG  
IMG\_TIR1 10.8 um  
LIC Mercator

17-09-2024/(0415 to 0442) GMT  
17-09-2024/(0945 to 1012) IST



Contact: Cyclone Warning Division, Office of the Director General of Meteorology, India Meteorological Department, Ministry of Earth Sciences, E-mail: cyclonewarningdivision@gmail.com, Website: [rsmcnewdelhi.imd.gov.in](http://rsmcnewdelhi.imd.gov.in), Spatial rainfall distribution: Isolated: <25%, A few: 26-50%, Many: 51-75%, Most: 76-100%, Rainfall amount (mm): Heavy rain: 64.5 – 115.5, Very heavy rain: 115.6 – 204.4, Extremely heavy rain: 204.5 or more.



## OBSERVED AND FORECAST TRACK OF DEPRESSION OVER NORTHEAST CHHATTISGARH AND ADJOINING JHARKHAND BASED ON 0300 UTC (0830 IST) OF 17<sup>TH</sup> SEPTEMBER 2024.

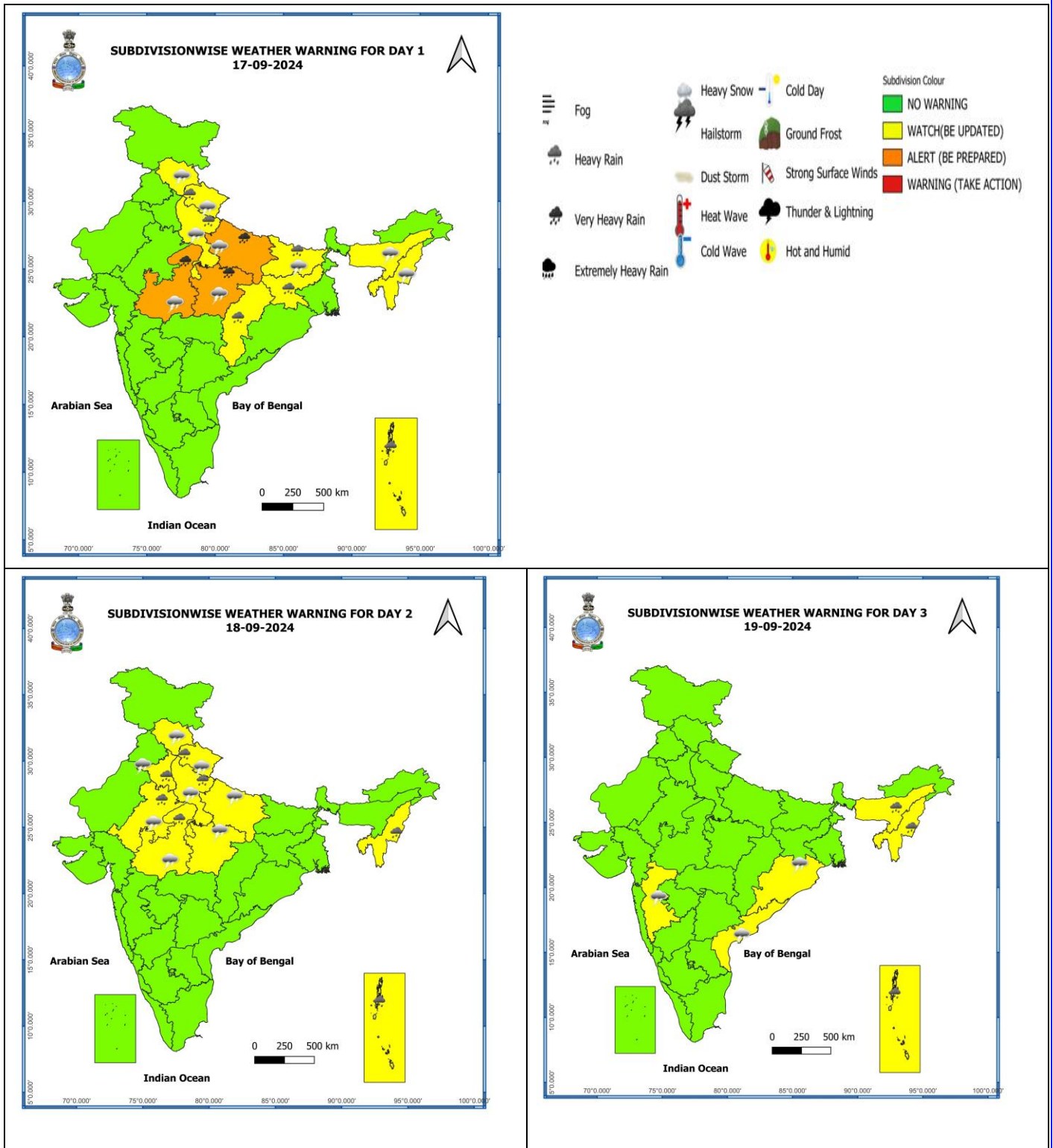


**DATE/TIME IN UTC**  
**IST=UTC + 0530**  
**L: LOW PRESSURE AREA**  
**WML: WELL MARKED LOW PRESSURE AREA**  
**D: DEPRESSION (17-27 KT)**  
**DD: DEEP DEPRESSION (28-33 KT)**  
**CS: CYCLONIC STORM (34-47 KT)**  
**SCS: SEVERE CYCLONIC STORM (48-63KT)**  
**VSCS: VERY SEVERE CYCLONIC STORM (64-89 KT)**  
**ESCS: EXTREMELY SEVERE CYCLONIC STORM (90-119 KT)**  
**SuCS: SUPER CYCLONIC STORM (≥ 120 KT)**

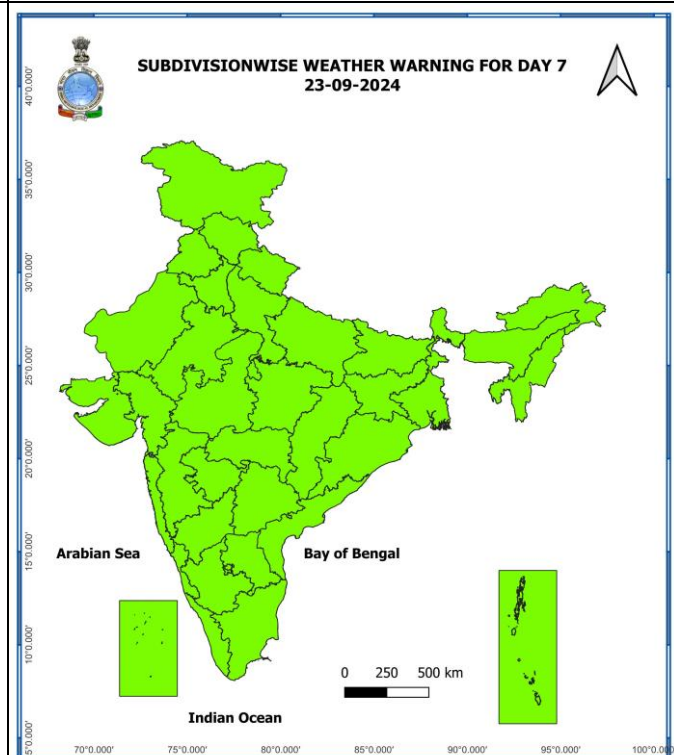
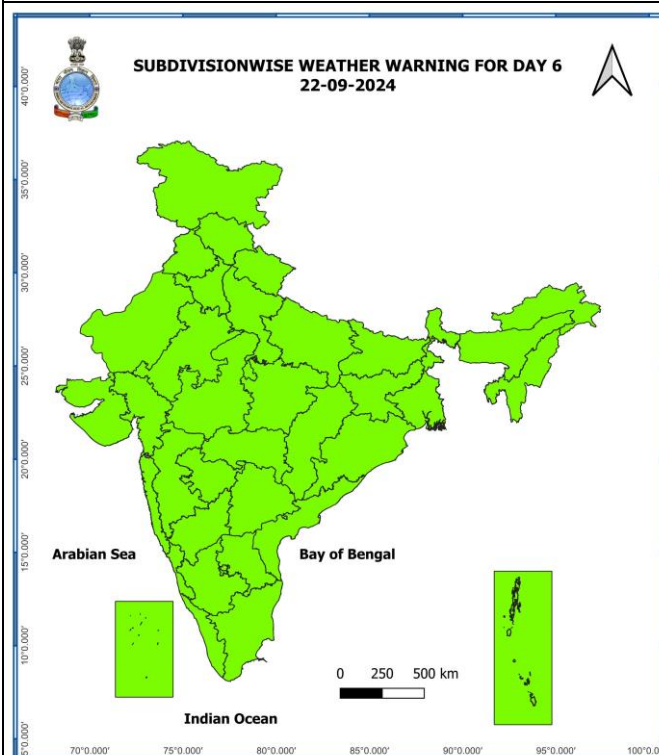
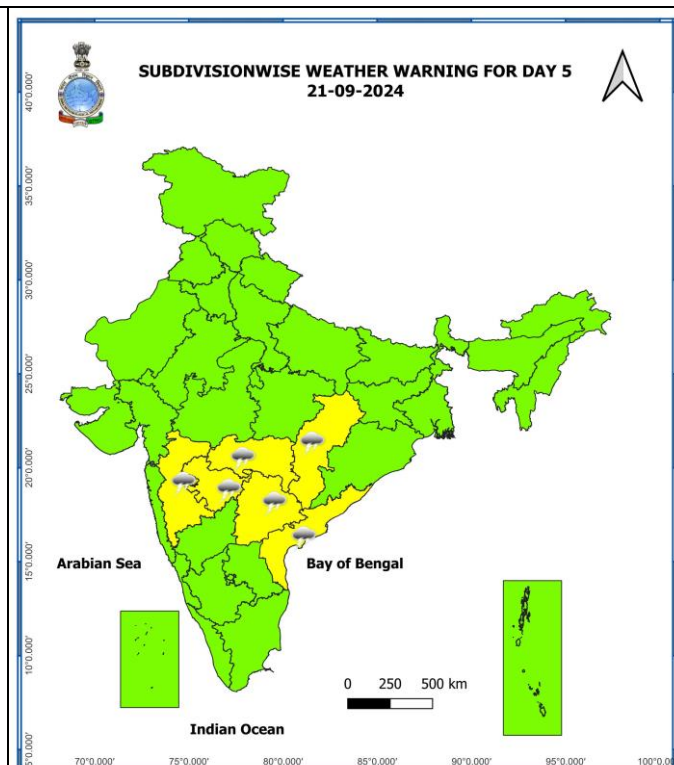
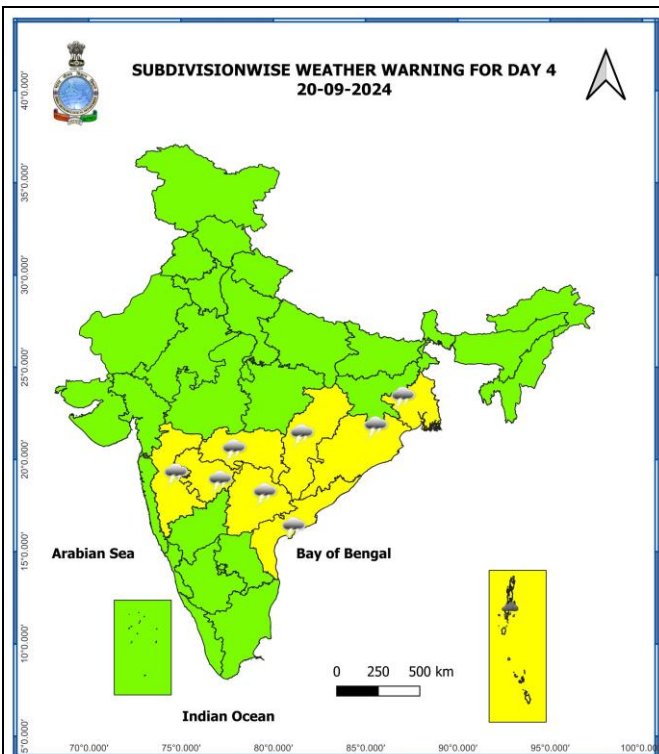
- LESS THAN 34 KT
- 34-47 KT
- ≥ 48 KT
- OBSERVED TRACK
- FORECAST TRACK
- CONE OF UNCERTAINTY

**Contact: Cyclone Warning Division, Office of the Director General of Meteorology, India Meteorological Department, Ministry of Earth Sciences, E-mail: cyclonewarningdivision@gmail.com, Website: [rsmcnewdelhi.imd.gov.in](http://rsmcnewdelhi.imd.gov.in), Spatial rainfall distribution: Isolated: <25%, A few: 26-50%, Many: 51-75%, Most: 76-100%, Rainfall amount (mm): Heavy rain: 64.5 – 115.5, Very heavy rain: 115.6 – 204.4, Extremely heavy rain: 204.5 or more.**

## Weather Warning Graphics



**Contact:** Cyclone Warning Division, Office of the Director General of Meteorology, India Meteorological Department, Ministry of Earth Sciences, E-mail: [cyclonewarningdivision@gmail.com](mailto:cyclonewarningdivision@gmail.com), Website: [rsmcnewdelhi.imd.gov.in](http://rsmcnewdelhi.imd.gov.in), Spatial rainfall distribution: Isolated: <25%, A few: 26-50%, Many: 51-75%, Most: 76-100%, Rainfall amount (mm): Heavy rain: 64.5 – 115.5, Very heavy rain: 115.6 – 204.4, Extremely heavy rain: 204.5 or more.



- Action may be taken based on **ORANGE AND RED COLOUR** warnings.
- Vulnerable regions likely urban and hilly areas action may be initiated for heavy rainfall warning.
- As the lead period increases forecast accuracy decreases.

**Contact:** Cyclone Warning Division, Office of the Director General of Meteorology, India Meteorological Department, Ministry of Earth Sciences, E-mail: [cyclonewarningdivision@gmail.com](mailto:cyclonewarningdivision@gmail.com), Website: [rsmcnewdelhi.imd.gov.in](http://rsmcnewdelhi.imd.gov.in), Spatial rainfall distribution: Isolated: <25%, A few: 26-50%, Many: 51-75%, Most: 76-100%, Rainfall amount (mm): Heavy rain: 64.5 – 115.5, Very heavy rain: 115.6 – 204.4, Extremely heavy rain: 204.5 or more.

## Flash Flood Guidance

### **24 hours Outlook for the Flash Flood Risk (FFR) till 0530 IST of 18-09-2024 :**

**Low to Moderate flash flood risk** likely over few watersheds & neighbourhoods of following Met Sub-divisions during next 24 hours.

**East Uttar Pradesh** - Chandauli, Mirzapur, Prayagraj and Sonbhadra districts.

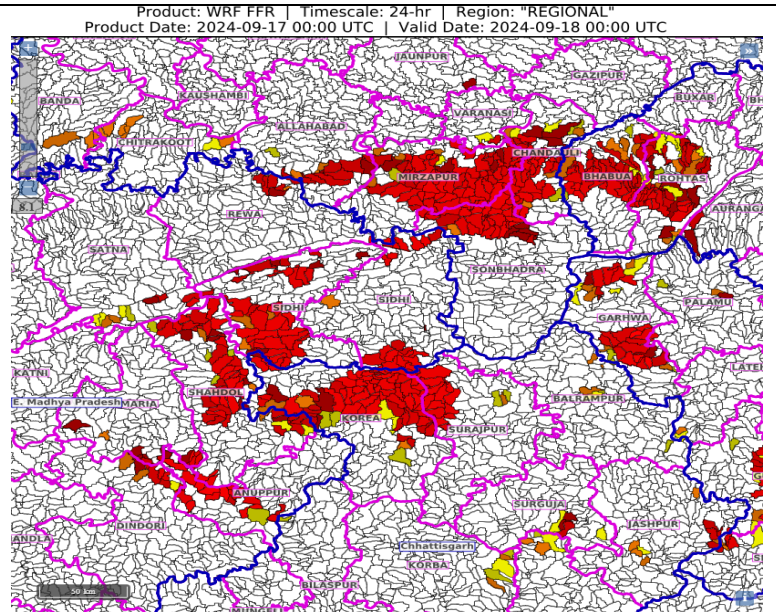
**Chhattisgarh** - Korea and Surajpur districts.

**East Madhya Pradesh** - Anuppur, Dindori, Rewa, Satna, Shahdol, Sidhi, Singrauli and Umaria districts.

**Bihar** - Bhabua and Rohtas districts.

**Jharkhand** - Garhwa district.

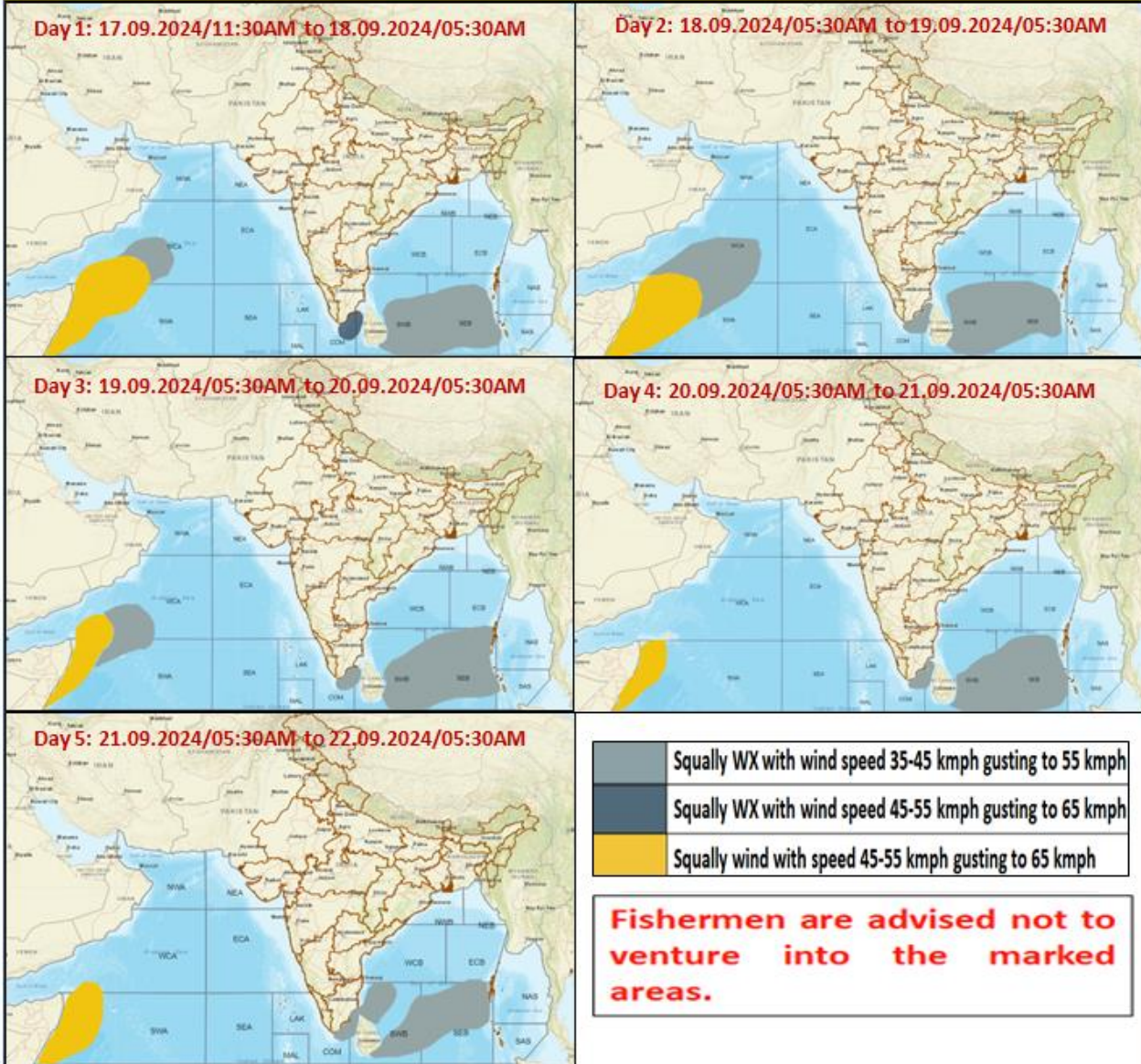
Surface runoff/ Inundation may occur at some fully saturated soils & low-lying areas over Area of Concern (AoC) as shown in map due to expected rainfall occurrence in next 24 hours.



**Contact:** Cyclone Warning Division, Office of the Director General of Meteorology, India Meteorological Department, Ministry of Earth Sciences, E-mail: [cyclonewarningdivision@gmail.com](mailto:cyclonewarningdivision@gmail.com), Website: [rsmcnewdelhi.imd.gov.in](http://rsmcnewdelhi.imd.gov.in), Spatial rainfall distribution: Isolated: <25%, A few: 26-50%, Many: 51-75%, Most: 76-100%, Rainfall amount (mm): Heavy rain: 64.5 – 115.5, Very heavy rain: 115.6 – 204.4, Extremely heavy rain: 204.5 or more.



### Fishermen Warning Graphics



Contact: Cyclone Warning Division, Office of the Director General of Meteorology, India Meteorological Department, Ministry of Earth Sciences, E-mail: [cyclonewarningdivision@gmail.com](mailto:cyclonewarningdivision@gmail.com), Website: [rsmcnewdelhi.imd.gov.in](http://rsmcnewdelhi.imd.gov.in), Spatial rainfall distribution: Isolated: <25%, A few: 26-50%, Many: 51-75%, Most: 76-100%, Rainfall amount (mm): Heavy rain: 64.5 – 115.5, Very heavy rain: 115.6 – 204.4, Extremely heavy rain: 204.5 or more.



**Significant amount of rainfall (from 0830 hours IST of 16.09.2024 to 0830 hours IST of 17.09.2024) (in cm):**

- ❖ **Chhattisgarh:** Kusmi (Balrampur) 15, Ramchandrapur (Balrampur) 14, Samari (Balrampur) 12, Biharpur (Surajpur) 12, Ramanujganj (Balrampur) 11, Odagi (Surajpur) 9, Sonhat (Koriya) 9, Chando (Balrampur) 9, Pondi Bachra (Koriya) 8, Balrampur (Balrampur) 8, Rajpur (Balrampur) 7, Bhaiyathan (Surajpur) 7, Manora (Jashpur) 7, Pasaan (Korba) 7,
- ❖ **East Madhya Pradesh:** Churhat (Sidhi) 14, Panagar (Jabalpur) 12, Bilhari (Katni) 10, Jabalpur-aws (Jabalpur) 10, Bargi (Jabalpur) 10, Mada (Singrauli) 9, Bijadandi (Mandla) 7, Sarai (Singrauli) 7, Nowrozabad (Umaria) 7, Chitrangi (Singrauli) 7,