



**Government of India
Ministry of Earth Sciences**



India Meteorological Department

PRESS RELEASE-10

Time of issue: 1500 hours IST

Dated: 3rd September, 2024

Sub: Low Pressure Area over West Vidarbha and neighbourhood

Yesterday's depression over East Vidarbha and adjoining Telangana moved west-northwestwards and weakened into a Well Marked Low Pressure Area over central parts of Vidarbha and neighbourhood in the same evening (1730 hours IST) i.e. the 2nd September, 2024. It lay as low pressure area over west Vidarbha & neighbourhood in the morning (0830 hours IST) of today, the 3rd September, 2024.

All associated graphics have been kept in Annexure-1. The 24 hours accumulated realised rainfall (≥ 7 cm) ending at 0830 hours IST of 3rd September is kept in Annexure-2.

This is the last press release with respect to this system. However, regular updates shall continue from National Weather Forecasting Centre and concerned Regional Meteorological Centres and Meteorological Centres in association with the remnant of this system and other prevailing weather systems over the country.

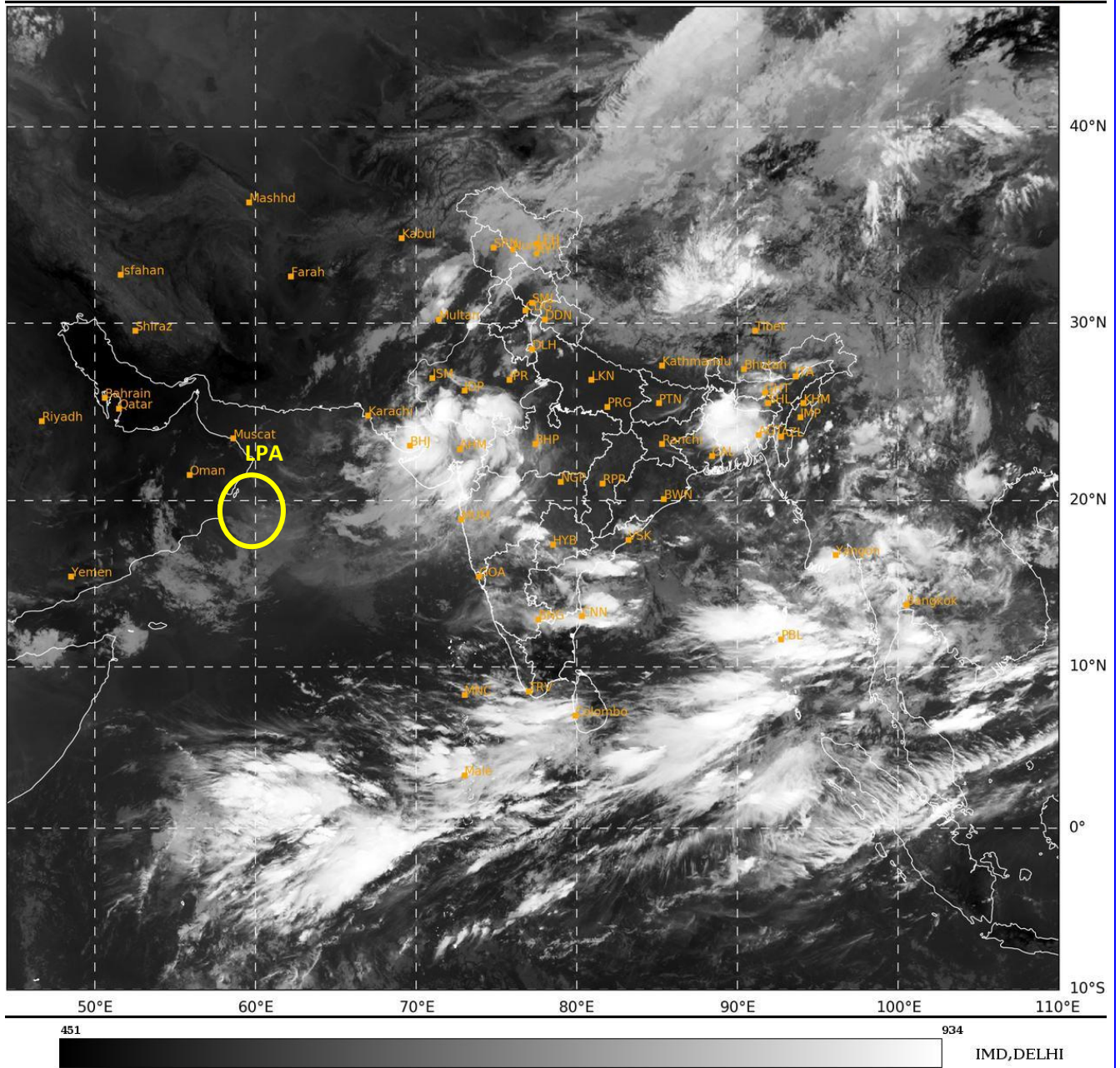
For regular updates kindly visit www.rsmcnewdelhi.imd.gov.in and www.mausam.imd.gov.in

Contact: Cyclone Warning Division, Office of the Director General of Meteorology, India Meteorological Department, Ministry of Earth Sciences, E-mail: cyclonewarningdivision@gmail.com, Website: rsmcnewdelhi.imd.gov.in, Spatial rainfall distribution: Isolated: <25%, A few: 26-50%, Many: 51-75%, Most: 76-100%, Rainfall amount (mm): Heavy rain: 64.5 – 115.5, Very heavy rain: 115.6 – 204.4, Extremely heavy rain: 204.5 or more.

ANNEXURE – I

SAT : INSAT-3DR IMG
IMG_TIR1 10.8 um
L1C Mercator

03-09-2024/(0315 to 0342) GMT
03-09-2024/(0845 to 0912) IST



LPA: LOW PRESSURE AREA

Contact: Cyclone Warning Division, Office of the Director General of Meteorology, India Meteorological Department, Ministry of Earth Sciences, E-mail: cyclonewarningdivision@gmail.com, Website: rsmcnewdelhi.imd.gov.in, Spatial rainfall distribution: Isolated: <25%, A few: 26-50%, Many: 51-75%, Most: 76-100%, Rainfall amount (mm): Heavy rain: 64.5 – 115.5, Very heavy rain: 115.6 – 204.4, Extremely heavy rain: 204.5 or more.



OBSERVED TRACK OF DEPRESSION OVER WEST CENTRAL BAY OF BENGAL DURING 31ST AUGUST - 2ND SEPTEMBER, 2024



DATE/TIME IN UTC
 IST=UTC + 0530
 L: LOW PRESSURE AREA
 WML: WELL MARKED LOW PRESSURE AREA
 D: DEPRESSION (17-27 KT)
 DD: DEEP DEPRESSION (28-33 KT)
 CS: CYCLONIC STORM (34-47 KT)
 SCS: SEVERE CYCLONIC STORM (48-63KT)
 VSCS: VERY SEVERE CYCLONIC STORM (64-89 KT)
 ESCS: EXTREMELY SEVERE CYCLONIC STORM (90-119 KT)
 SuCS: SUPER CYCLONIC STORM (\geq 120 KT)

● LESS THAN 34 KT
 ○ 34-47 KT
 ○ \geq 48 KT
 — OBSERVED TRACK
 — FORECAST TRACK
 ▲ CONE OF UNCERTAINTY

Contact: Cyclone Warning Division, Office of the Director General of Meteorology, India
 Meteorological Department, Ministry of Earth Sciences, E-mail: cyclonewarningdivision@gmail.com,
 Website: rsmcnewdelhi.imd.gov.in, Spatial rainfall distribution: Isolated: <25%, A few: 26-50%, Many:
 51-75%, Most: 76-100%, Rainfall amount (mm): Heavy rain: 64.5 – 115.5, Very heavy rain: 115.6 –
 204.4, Extremely heavy rain: 204.5 or more.

Significant amount of rainfall recorded from 0830 hours IST of yesterday, 2nd September to 0830 hours IST of today, the 3rd September, 2024 (cm):

Gujarat Region: Valia (Bharuch) 37, Songadh (Tapi) 25, Mangrol (Surat) 25, Vyara (Tapi) 22, Maktampur_aws (Bharuch) 20, Bharuch (Bharuch) 19, Nadiad (Kheda) 17, Netrang (Bharuch) 17, Tilakwada (Narmada) 17, Dolvan (Tapi) 16, Vansda (Navsari) 15, Uchchhal (Tapi) 15, Subir (Dangs) 15, Daman (Daman) 14, Bayad (Aravalli) 13, Kapadvanj (Kheda) 13, Karjan (Vadodara) 12, Lunawada (Mahisagar) 12, Valod (Tapi) 12, Nandod (Narmada) 12, Valsad_ (Valsad) 12, Mandvi (Surat) 12, Prantij (Sabarkantha) 12, Kathalal (Kheda) 11, Himatanagar (Sabarkantha) 11, Bayad (Aravalli) 11, Mahesana (Mehsana) 11, Waghai (Dangs) 10, Garudeshwar (Narmada) 10, Umerpada (Surat) 10, Virpur (Mahisagar) 10, Vagra (Bharuch) 10, Balasinor (Mahisagar) 10, Kamrej (Surat) 10,

Madhya Maharashtra: Navapur (Nandurbar) 16, Nandgaon (Nashik) 9, Gaganbawada (Kolhapur) 7, Gidhade (Dhule) 7,

West Madhya Pradesh: Gandhwani (Dhar) 16, Kukshi (Dhar) 14, Sardarpur (Dhar) 13, Bagh (Dhar) 13, Jabot (Alirajpur) 12, Jhabua (Jhabua) 11, Dahi (Dhar) 11, Rama (Jhabua) 11, Alirajpur (Alirajpur) 10, Udaigarh (Alirajpur) 8, Meghnagar (Jhabua) 8, Ranapur (Jhabua) 7, Manawar (Dhar) 7, Khalwa (Khandwa) 7,

Telangana: Tekmal (Medak) 11, Papannapet (Medak) 8, Kowdipalle (Medak) 8, Naga Reddipet (Kamareddy) 7, Yellareddy (Kamareddy) 7,

East Rajasthan: Bhungra (Banswara) 11, Devel (Dungarpur) 10, Sajjangarh (Banswara) 10, Kherwara (Udaipur) 10, Ganeshpur (Dungarpur) 7, Kesarpura (Banswara) 7, Sallopat (Banswara) 7,

Vidarbha: Mangrulpir (Washim) 8,

Contact: Cyclone Warning Division, Office of the Director General of Meteorology, India
Meteorological Department, Ministry of Earth Sciences, E-mail: cyclonewarningdivision@gmail.com,
Website: rsmcnewdelhi.imd.gov.in, **Spatial rainfall distribution:** Isolated: <25%, A few: 26-50%, Many: 51-75%, Most: 76-100%, **Rainfall amount (mm):** Heavy rain: 64.5 – 115.5, Very heavy rain: 115.6 – 204.4, Extremely heavy rain: 204.5 or more.