



Government of India
Ministry of Earth Sciences



India Meteorological Department

PRESS RELEASE-2

Time of issue: 1630 hours IST

Dated: 21st October, 2024

Subject: Well Marked Low Pressure Area over Eastcentral Bay of Bengal: Pre-Cyclone Watch for Odisha and West Bengal

Yesterday's Low Pressure Area over the Eastcentral Bay of Bengal and adjoining north Andaman Sea moved west-northwestwards and lay as a well marked low pressure area over Eastcentral Bay of Bengal at 1130 hours IST of today, the 21st October 2024.

It is very likely to move west-northwestwards and intensify into a depression by 22nd October morning and into a cyclonic storm over eastcentral Bay of Bengal by 23rd October. Thereafter, it is very likely to move northwestwards, intensify into a severe cyclonic storm over northwest Bay of Bengal in the morning of 24th October, 2024 and cross north Odisha and West Bengal coasts between Puri and Sagar Island during night of 24th and early morning 25th October, 2024 as a severe Cyclonic Storm with a wind speed of 100-110 kmph gusting 120 kmph.

Forecast track and intensity are given in the following table:

Date/Time (IST)	Position (Lat. °N/ Long. °E)	Maximum Sustained Surface Wind Speed (Kmph)	Category Of Cyclonic Disturbance
21.10.24/1130	15.0/92.0	25-35 gusting to 45	Well Marked Low Pressure Area
21.10.24/2330	15.3/91.2	30-40 gusting to 50	Well Marked Low Pressure Area
22.10.24/1130	15.6/90.3	40-50 gusting to 60	Depression
22.10.24/2330	16.1/89.4	50-60 gusting to 70	Deep Depression
23.10.24/1130	16.8/88.7	60-70 gusting to 80	Cyclonic Storm
23.10.24/2330	18.1/88.1	80-90 gusting to 100	Cyclonic Storm
24.10.24/1130	19.4/87.6	90-100 gusting to 110	Severe Cyclonic Storm
24.10.24/2330	20.7/87.0	100-110 gusting to 120	Severe Cyclonic Storm
25.10.24/1130	21.3/86.4	75-85 gusting to 95	Cyclonic Storm
25.10.24/2330	21.8/85.7	45-55 gusting 65	Depression

(i) Rainfall Warning:

- ❖ Light to moderate rainfall at most places with **heavy to very heavy rainfall (7-20 cm)** at isolated places is very likely over Andaman Islands on 21st October.
- ❖ Light to moderate rainfall at most places with **heavy rainfall (07-11 cm)** at isolated places is very likely over **Balasore, Bhadrak, Kendrapara, Jagatsingpur, , Puri, Khorda, Ganjam, Gajapati**, districts of Odisha on 23rd Oct. & **heavy to very heavy rainfall** at a few places and **extremely heavy rainfall (≥ 21 cm)** at isolated places over **Baleswar, Mayurbhanj, Bhadrak, Kendrapara, Jagatsingpur Kendujhar, Jajpur, Cuttack and Dhenkanal and Puri** districts of Odisha on 24th & 25th October.

Contact: Cyclone Warning Division, Office of the Director General of Meteorology, India Meteorological Department, Ministry of Earth Sciences, E-mail: cyclonewarningdivision@gmail.com, Website: rsmcnewdelhi.imd.gov.in, Spatial rainfall distribution: Isolated: <25%, A few: 26-50%, Many: 51-75%, Most: 76-100%, Rainfall amount (mm): Heavy rain: 64.5 – 115.5, Very heavy rain: 115.6 – 204.4, Extremely heavy rain: 204.5 or more.

- ❖ **Light to moderate rainfall at most places with heavy rainfall** at isolated places is very likely on 23rd October and heavy to very heavy rainfall at a few places **with extremely heavy rainfall** at isolated places over **South & North 24 Parganas, East & West Medinipur, Jhargram, Howrah, Hooghly, Kolkata and Bankura** districts of Gangetic West Bengal on 24th & 25th October.
- ❖ Light to moderate rainfall at many places with **heavy rainfall** at isolated places is very likely over **Srikakulam, Vizianagaram and Vishakhapatnam** districts of North coastal Andhra Pradesh on 24th and 25th October.

(ii) Wind Warning:

Andaman Sea: Squally weather with wind speed reaching 35-45 gusting to 55 kmph is very likely over Andaman Sea on 21st October.

Eastcentral Bay of Bengal: Squally wind speed reaching 35-45 gusting to 65 kmph is very likely on 21st October, 55-65 gusting to 75 kmph by 22nd evening, 70-90 kmph gusting to 100 kmph from 23rd evening till 24th morning.

Adjoining areas of Westcentral Bay of Bengal: Squally wind speed reaching 45-55 gusting to 65 kmph is very likely on 23rd and 24th Oct.

North Bay of Bengal: Squally wind speed reaching 40-50 gusting to 60 kmph is very likely to commence from 23rd morning. It would gradually increase becoming gale wind speed reaching 100-110 kmph gusting to 120 kmph from 24th Oct evening to 25th Oct morning and decrease thereafter.

Along & off Odisha-west Bengal coasts: Squally wind speed reaching 40-50 gusting to 60 kmph is very likely to commence from 23rd Oct evening. It would gradually increase becoming gale wind speed reaching 100-110 kmph gusting to 120 kmph from 24th Oct night till 25th Oct morning.

(iii) Sea Condition:

Andaman Sea: Sea condition is likely to be **Moderate to Rough** on **21st October**.

Eastcentral Bay of Bengal: Sea condition is likely to become **Rough to Very Rough** from **21st October morning to 22nd October evening**, becoming **very rough to high thereafter till 24th October morning**.

Adjoining areas of Westcentral Bay of Bengal: Sea condition is likely to be **Rough to Very Rough** on 23rd and 24th October.

North Bay of Bengal: Sea condition is likely to be **Rough to Very Rough** from **23rd morning** and would become **High** from **24th October morning till 25th Oct forenoon**.

Along & off Odisha-west Bengal coasts: Sea condition is likely to be **Rough to Very Rough** from **23rd evening** and would become **High** from **24th October evening to 25th Oct forenoon**.

(iv) Fishermen Warning:

Fishermen are advised not to venture into

- Andaman Sea till 21st October.
- Eastcentral Bay of Bengal during 21st-24th October.
- **Adjoining areas of Westcentral Bay of Bengal on 23rd and 24th Oct.**
- **North Bay of Bengal** and along & off Odisha, West Bengal and Bangladesh coasts during 23rd to 25th October.

Contact: Cyclone Warning Division, Office of the Director General of Meteorology, India Meteorological Department, Ministry of Earth Sciences, E-mail:cyclonewarningdivision@gmail.com, Website: rsmcnewdelhi.imd.gov.in, Spatial rainfall distribution: Isolated: <25%, A few: 26-50%, Many: 51-75%, Most: 76-100%, Rainfall amount (mm): Heavy rain: 64.5 – 115.5, Very heavy rain: 115.6 – 204.4, Extremely heavy rain: 204.5 or more.

Fishermen out at sea are advised to return to coasts by 21st Oct.

(v) Impact Expected over districts of Odisha (Baleswar, Bhadrak, Kendrapara, Jagatsinghpur, Puri, Khorda, Mayurbhanj, Kendujhar, Jajpur, Cuttack, Dhenkanal) and West Bengal (South & North 24 Parganas, East & West Medinipur, Jhargram, Howrah, Hooghly, Kolkata, & Bankura)

- Major damage to thatched houses/ huts. Roof tops may blow off. Unattached metal sheets may fly.
- Minor damage to power and communication lines.
- Major damage to Kutcha and some damage to Pucca roads. Flooding of escape routes.
- Possibilities of damage to vulnerable structure. Breaking of tree branches and uprooting of trees.
- Moderate damage to banana and papaya trees. Large dead limbs blown from trees.
- Damage to horticulture and standing crops in some areas due to inundation and wind.
- Damage to embankments/ salt pans.
- Localized Flooding of roads, water logging in low lying areas and closure of underpasses mainly in urban areas of the above region.
- Occasional reduction in visibility due to heavy rainfall.
- Disruption of traffic in major cities and roadways due to water logging in roads and poor visibility due to heavy rain leading to increased travel time and incidents
- Localized Landslides/Mudslides/landslips/mud slips/land sinks/mud sinks.
- Likely disruption of marine and inland water transportation like small boats and trawlers.
- It may lead to riverine flooding in some river catchments (for riverine flooding please visit Webpage of Central Water Commission)

❖ Action Suggested Baleswar, Bhadrak, Kendrapara, Jagatsinghpur, Puri, Khorda, Mayurbhanj, Kendujhar, Jajpur, Cuttack, Dhenkanal) and West Bengal (South & North 24 Parganas, East & West Medinipur, Jhargram, Howrah, Hooghly, Kolkata & Bankura)

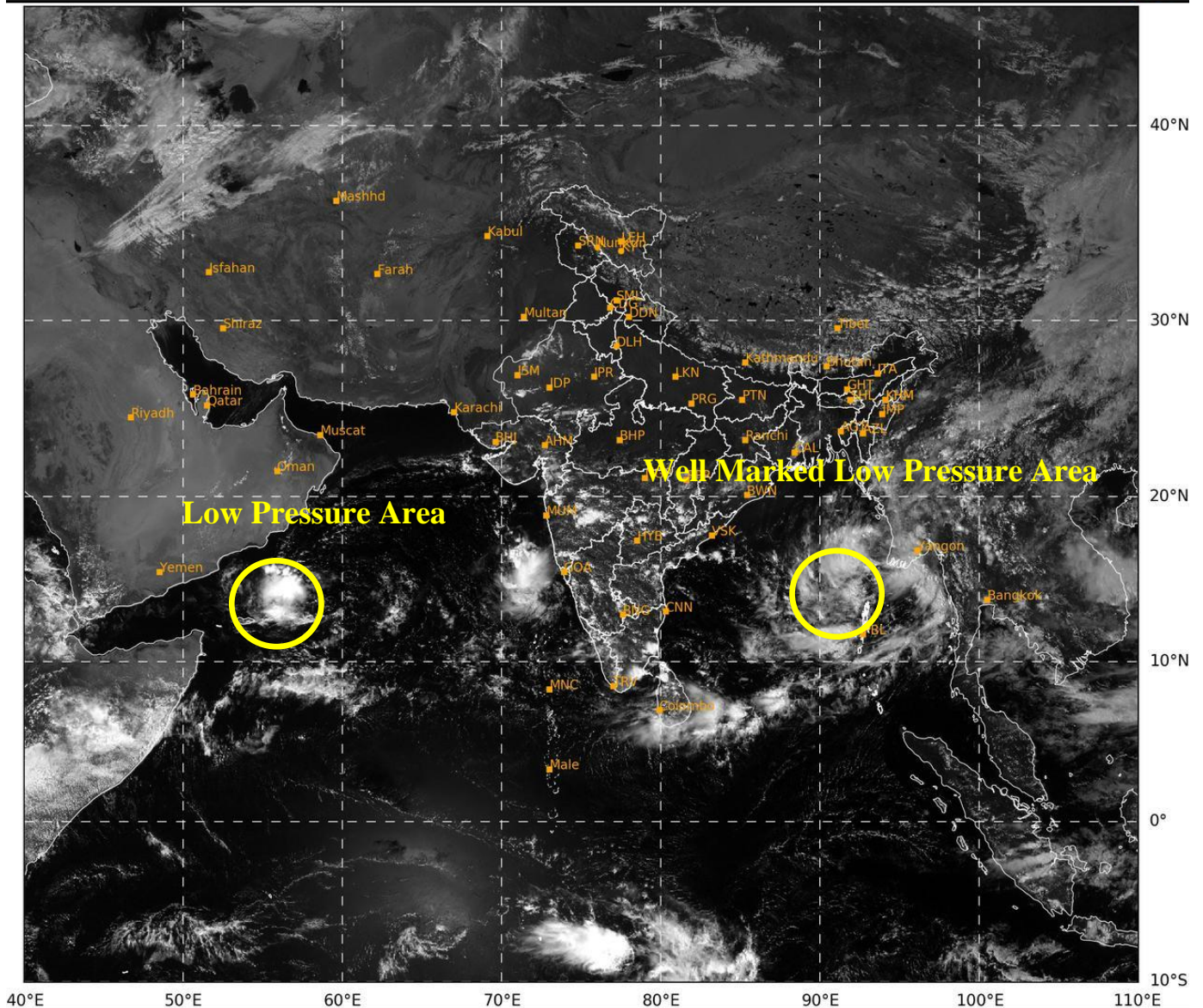
- Fishermen are advised not to venture into
 - ✓ Andaman Sea till 21st October.
 - ✓ Eastcentral Bay of Bengal during 21st-24th October.
 - ✓ **Adjoining areas of Westcentral Bay of Bengal on 23rd and 24th Oct.**
 - ✓ **North Bay of Bengal** and along & off Odisha-West Bengal coasts during 23rd to 25th October morning.
- Fishermen out at sea are advised to return to coasts by 21st October.
- Total suspension of fishing operations during 22nd to 25th Oct over Central and North Bay of Bengal.
- Movement in motor boats unsafe
- Coastal hutment dwellers to be moved to safer places.
- People in affected areas to remain indoors.
- Judicious regulation of onshore/offshore, Port and maritime activities including shipping.
- Judicious regulation of tourism activities in Andaman & Nicobar Islands.
- Judicious regulation of surface transports including railways and roadways.
- Check for traffic congestion on your route before leaving for your destination.
- Follow any traffic advisories that are issued in this regard.
- Avoid going to areas that face the water logging problems often.
- Avoid staying in vulnerable structure.

Next Press Release will be issued at 1430 hours IST of tomorrow, the 22nd October, 2024.

Contact: Cyclone Warning Division, Office of the Director General of Meteorology, India Meteorological Department, Ministry of Earth Sciences, E-mail: cyclonewarningdivision@gmail.com, Website: rsmcnewdelhi.imd.gov.in, Spatial rainfall distribution: Isolated: <25%, A few: 26-50%, Many: 51-75%, Most: 76-100%, Rainfall amount (mm): Heavy rain: 64.5 – 115.5, Very heavy rain: 115.6 – 204.4, Extremely heavy rain: 204.5 or more.

SAT : INSAT-3DR IMG
Visible Count 0.65 um
LIC Mercator

21-10-2024/(0745 to 0812) GMT
21-10-2024/(1315 to 1342) IST



37

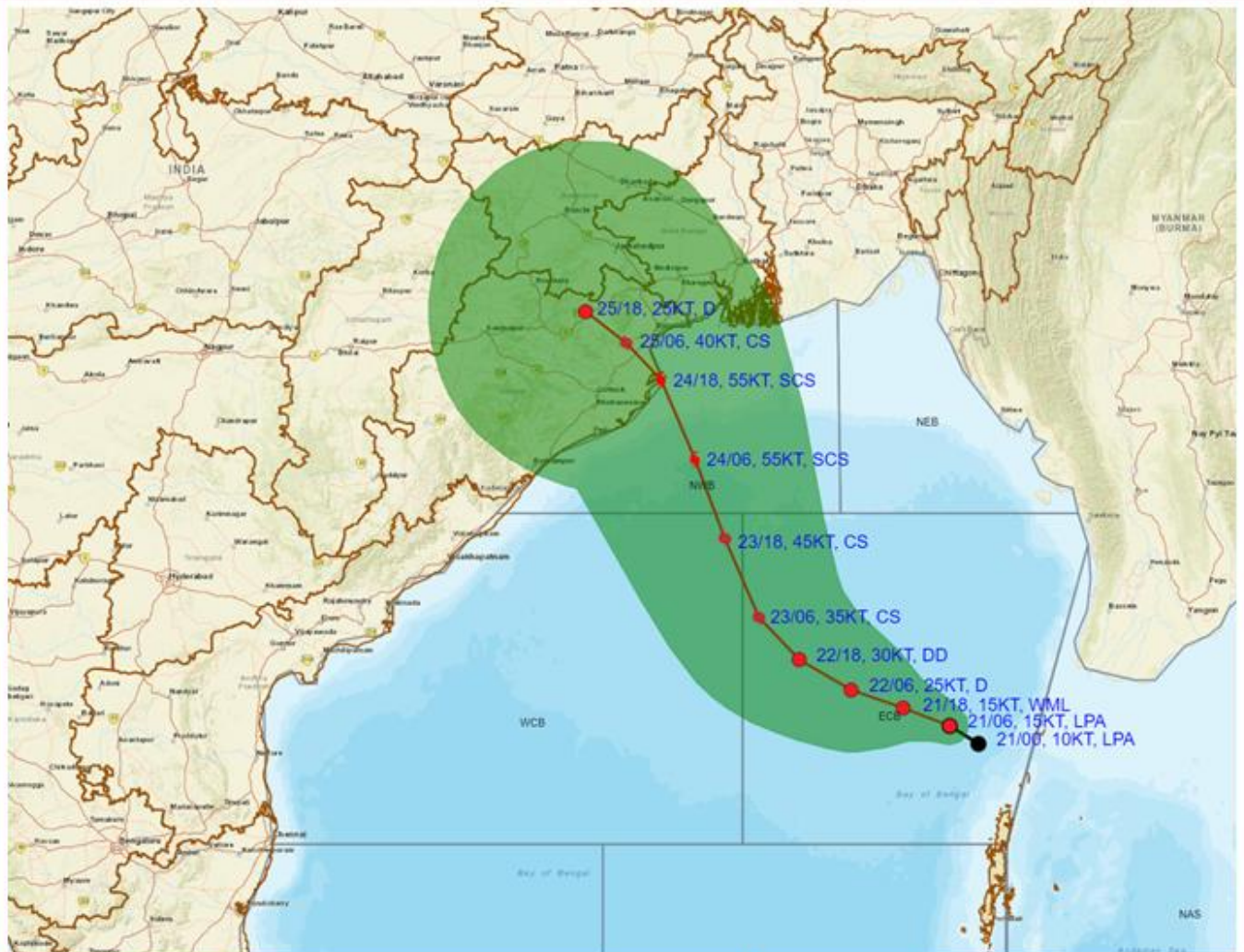
607

IMD, DELHI

Contact: Cyclone Warning Division, Office of the Director General of Meteorology, India Meteorological Department, Ministry of Earth Sciences, [E-mail: cyclonewarningdivision@gmail.com](mailto:cyclonewarningdivision@gmail.com), Website: rsmcnewdelhi.imd.gov.in, Spatial rainfall distribution: Isolated: <25%, A few: 26-50%, Many: 51-75%, Most: 76-100%, Rainfall amount (mm): Heavy rain: 64.5 – 115.5, Very heavy rain: 115.6 – 204.4, Extremely heavy rain: 204.5 or more.



OBSERVED AND FORECAST TRACK ALONGWITH CONE OF UNCERTAINTY OF LOW-PRESSURE AREA OVER EASTCENTRAL BAY OF BENGAL AND ADJOINING NORTH ANDAMAN SEA BASED ON 0600 UTC (1130 Hrs. IST) OF 21ST OCTOBER 2024



DATE/TIME IN UTC
 IST=UTC + 0530
 L: LOW PRESSURE AREA
 WML: WELL MARKED LOW PRESSURE AREA
 D: DEPRESSION (17-27 KT)
 DD: DEEP DEPRESSION (28-33 KT)
 CS: CYCLONIC STORM (34-47 KT)
 SCS: SEVERE CYCLONIC STORM (48-63KT)
 VSCS: VERY SEVERE CYCLONIC STORM (64-89 KT)
 ESCS: EXTREMELY SEVERE CYCLONIC STORM (90-119 KT)
 SuCS: SUPER CYCLONIC STORM (≥ 120 KT)

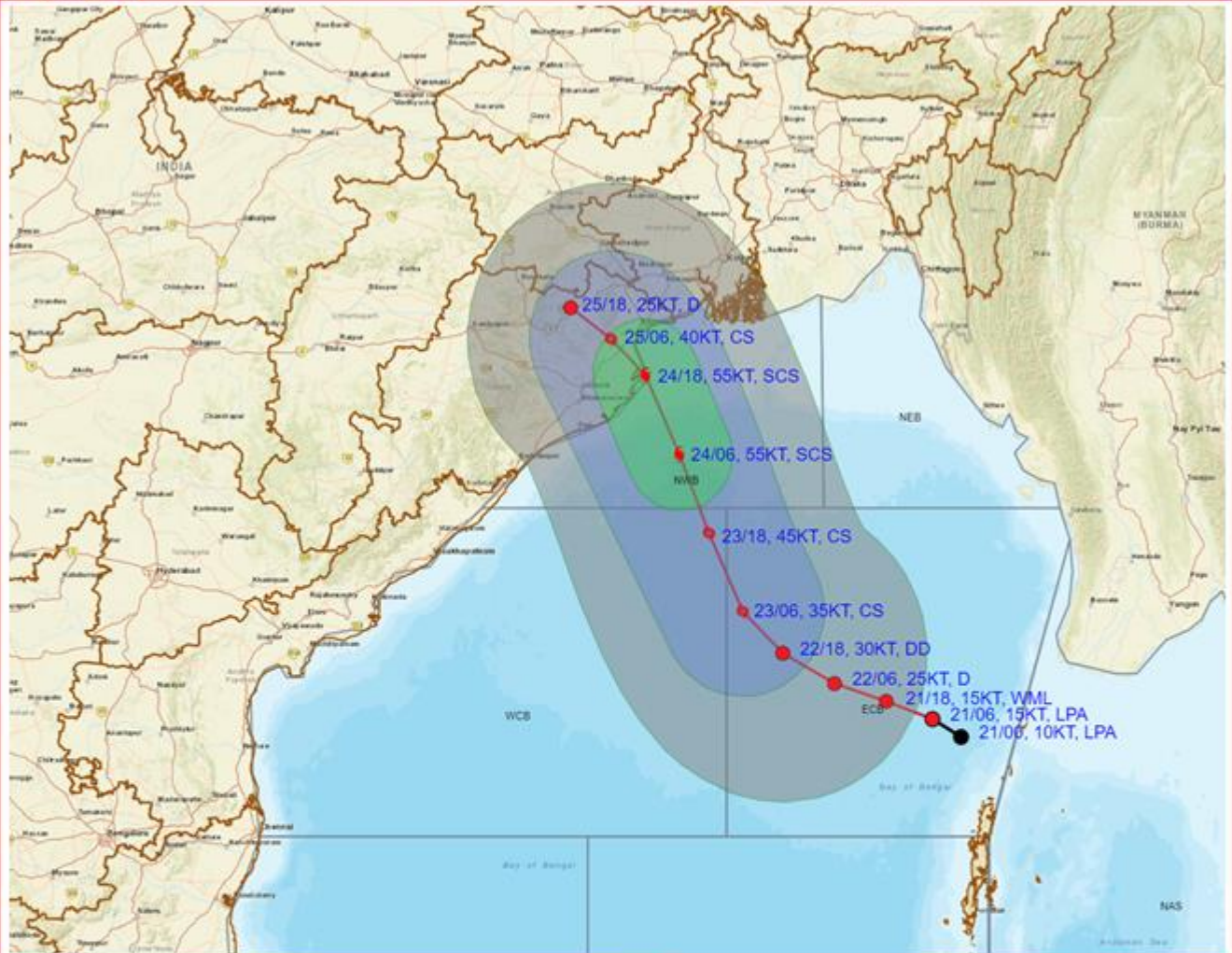
1KT=1.85 KMPH

- LESS THAN 34 KT
- 34-47 KT
- ≥ 48 KT
- OBSERVED TRACK
- FORECAST TRACK
- CONE OF UNCERTAINTY

Contact: Cyclone Warning Division, Office of the Director General of Meteorology, India Meteorological Department, Ministry of Earth Sciences, [E-mail: cyclonewarningdivision@gmail.com](mailto:cyclonewarningdivision@gmail.com), Website: rsmcnewdelhi.imd.gov.in, Spatial rainfall distribution: Isolated: <25%, A few: 26-50%, Many: 51-75%, Most: 76-100%, Rainfall amount (mm): Heavy rain: 64.5 – 115.5, Very heavy rain: 115.6 – 204.4, Extremely heavy rain: 204.5 or more.



OBSERVED AND FORECAST TRACK ALONGWITH QUADRANT WIND DISTRIBUTION OF LOW-PRESSURE AREA OVER EASTCENTRAL BAY OF BENGAL AND ADJOINING NORTH ANDAMAN SEA BASED ON 0600 UTC (1130 Hrs. IST) OF 21ST OCTOBER 2024



DATE/TIME IN UTC
 IST=UTC +0530
 L: LOW PRESSURE AREA
 WML: WELL MARKED LOW PRESSURE AREA
 D: DEPRESSION (17-27 KT)
 DD: DEEP DEPRESSION (28-33 KT)
 CS: CYCLONIC STORM (34-47 KT)
 SCS: SEVERE CYCLONIC STORM (48-63KT)
 VSCS: VERY SEVERE CYCLONIC STORM (64-89 KT)
 ESCS: EXTREMELY SEVERE CYCLONIC STORM (90-119 KT)
 SuCS: SUPER CYCLONIC STORM (≥ 120 KT)

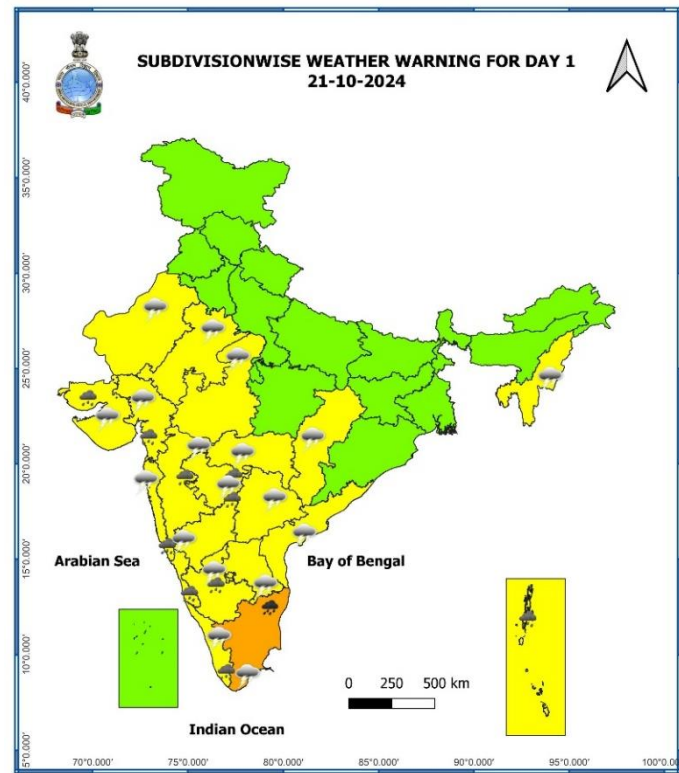
1KT=1.85 KMPH

- LESS THAN 34 KT
- 34-47 KT
- ≥ 48 KT
- OBSERVED TRACK
- FORECAST TRACK
- ▲ CONE OF UNCERTAINTY
- AREA OF MAXIMUM SUSTAINED WIND SPEED:
- 28-33 KT (52-61 KMPH)
- 34-49 KT (62-91 KMPH)
- 50-63 KT (92-117 KMPH)
- ≥ 64 KT (≥ 118 KMPH)

IMPACT OVER THE SEA

MSW (knot/kmph)	Impact	Action
28-33 (52-61)	Very rough seas	Total suspension of fishing operations
34-49 (62-91)	High to very high seas	Total suspension of fishing operations
50-63 (92-117)	Very high seas	Total suspension of fishing operations
≥ 64 (≥ 118)	Phenomenal	Total suspension of fishing operations

Contact: Cyclone Warning Division, Office of the Director General of Meteorology, India Meteorological Department, Ministry of Earth Sciences, [E-mail: cyclonewarningdivision@gmail.com](mailto:cyclonewarningdivision@gmail.com), Website: rsmcnewdelhi.imd.gov.in, Spatial rainfall distribution: Isolated: <25%, A few: 26-50%, Many: 51-75%, Most: 76-100%, Rainfall amount (mm): Heavy rain: 64.5 – 115.5, Very heavy rain: 115.6 – 204.4, Extremely heavy rain: 204.5 or more.



- Heavy Rain
- Very Heavy Rain
- Extremely Heavy Rain
- Thunder & Lightning

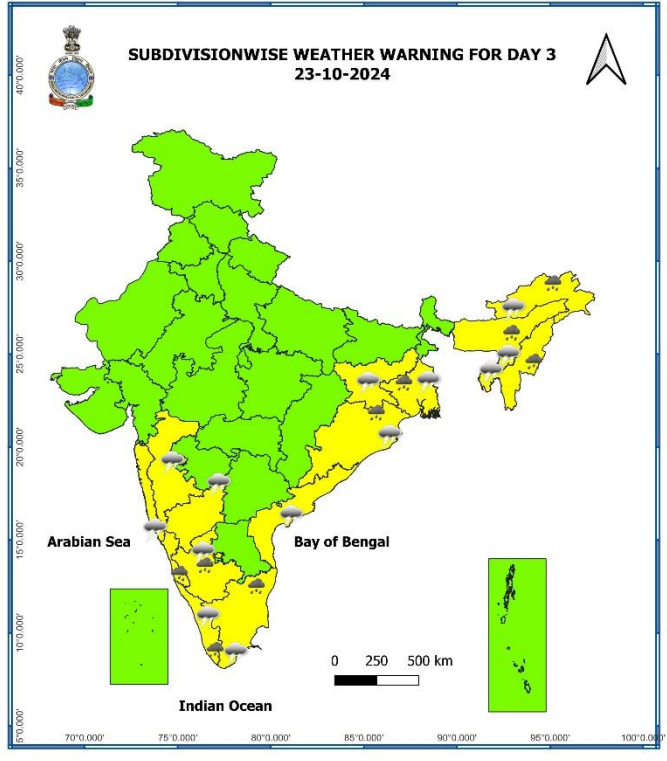
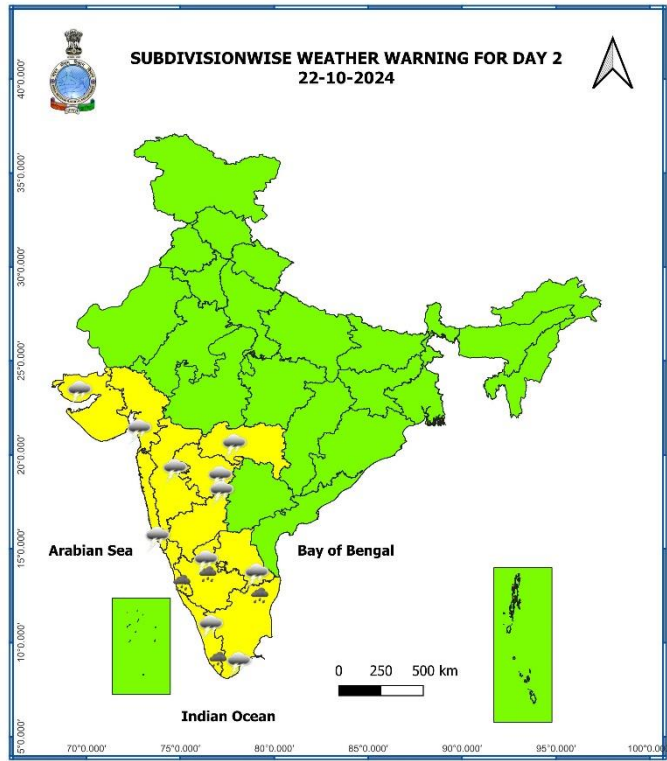
Watch (Be Aware)

Alert (Be Prepared To Take Action)

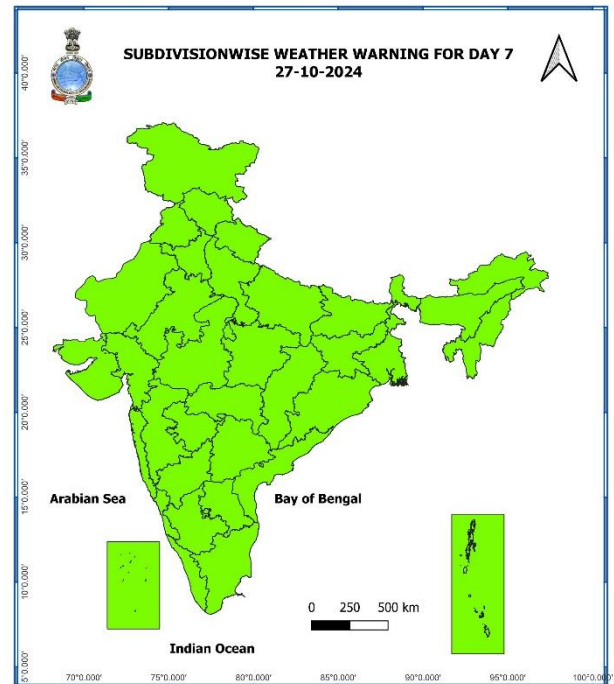
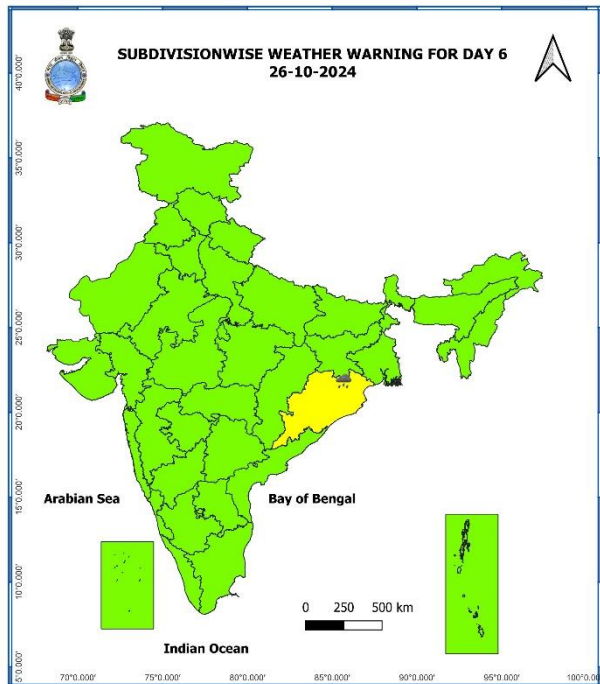
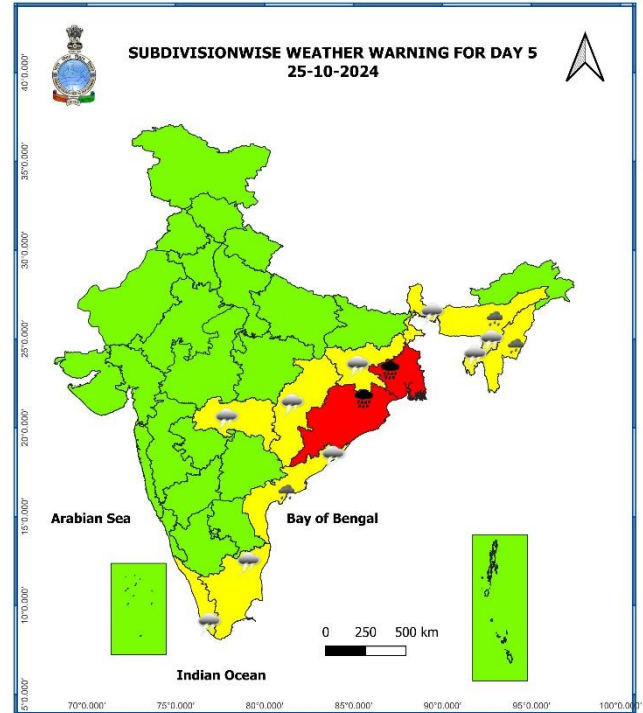
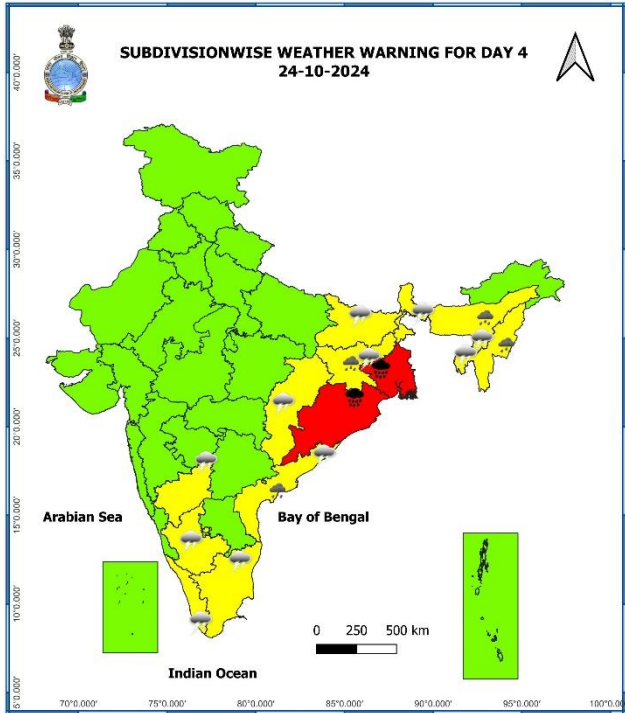
Warning (Take Action)

Probabilistic Forecast

Terms	Probability of Occurrence (%)
Unlikely	< 25
Likely	25 - 50
Very Likely	50 - 75
Most Likely	> 75



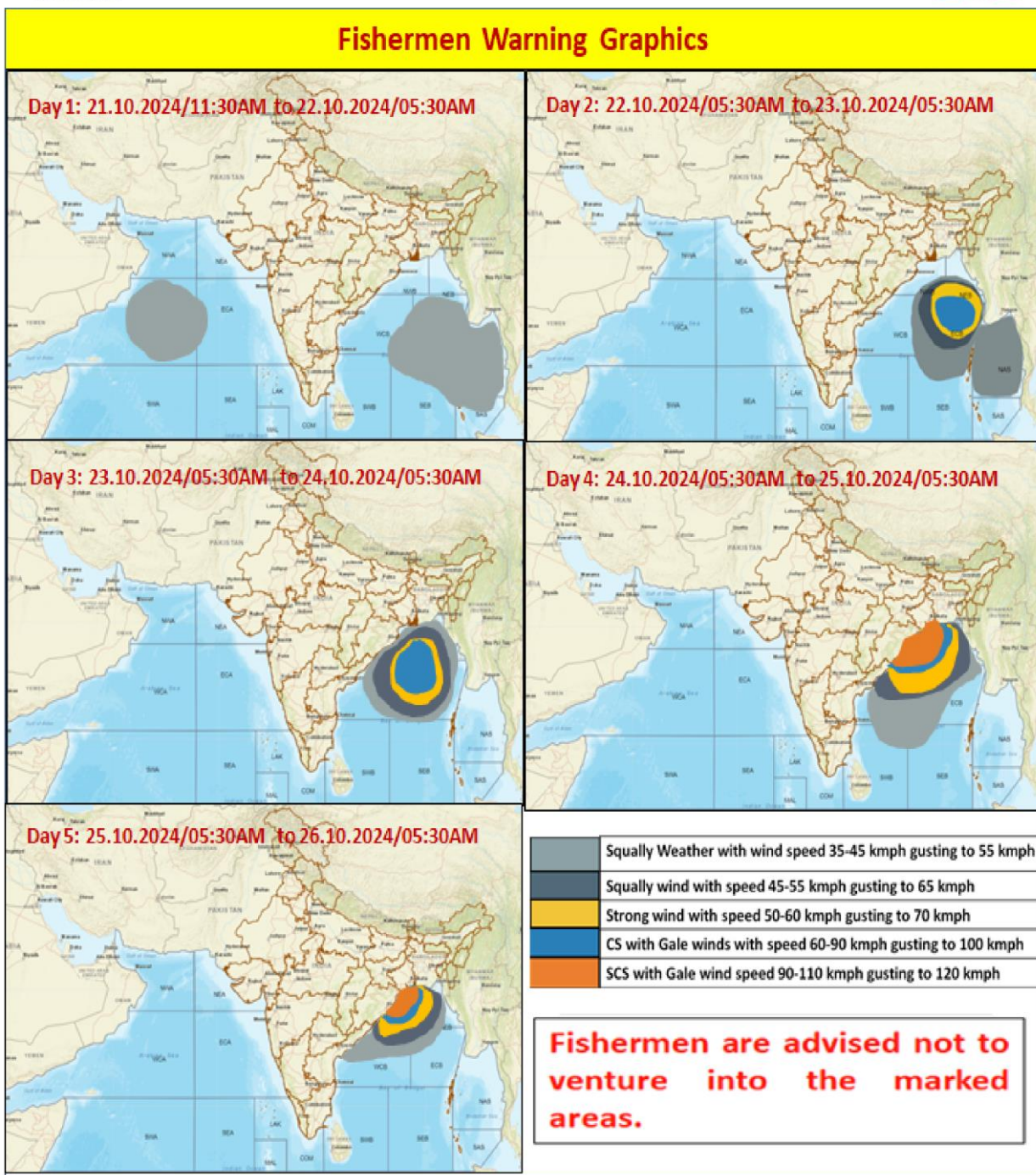
Contact: Cyclone Warning Division, Office of the Director General of Meteorology, India Meteorological Department, Ministry of Earth Sciences, [E-mail: cyclonewarningdivision@gmail.com](mailto:cyclonewarningdivision@gmail.com), Website: rsmcnewdelhi.imd.gov.in, Spatial rainfall distribution: Isolated: <25%, A few: 26-50%, Many: 51-75%, Most: 76-100%, Rainfall amount (mm): Heavy rain: 64.5 – 115.5, Very heavy rain: 115.6 – 204.4, Extremely heavy rain: 204.5 or more.



- Action may be taken based on **ORANGE AND RED** COLOUR warnings.
- Vulnerable regions likely urban and hilly areas action may be initiated for heavy rainfall warning.

Contact: Cyclone Warning Division, Office of the Director General of Meteorology, India Meteorological Department, Ministry of Earth Sciences, [E-mail: cyclonewarningdivision@gmail.com](mailto:cyclonewarningdivision@gmail.com), Website: rsmcnewdelhi.imd.gov.in, Spatial rainfall distribution: Isolated: <25%, A few: 26-50%, Many: 51-75%, Most: 76-100%, Rainfall amount (mm): Heavy rain: 64.5 – 115.5, Very heavy rain: 115.6 – 204.4, Extremely heavy rain: 204.5 or more.

- As the lead period increases forecast accuracy decreases.



Contact: Cyclone Warning Division, Office of the Director General of Meteorology, India Meteorological Department, Ministry of Earth Sciences, [E-mail: cyclonewarningdivision@gmail.com](mailto:cyclonewarningdivision@gmail.com), Website: rsmcnewdelhi.imd.gov.in, Spatial rainfall distribution: Isolated: <25%, A few: 26-50%, Many: 51-75%, Most: 76-100%, Rainfall amount (mm): Heavy rain: 64.5 – 115.5, Very heavy rain: 115.6 – 204.4, Extremely heavy rain: 204.5 or more.