



Government of India
Ministry of Earth Sciences



India Meteorological Department

PRESS RELEASE-3

Time of issue: 1330 hours IST

Dated: 10th September, 2024

Sub: Depression over North Chhattisgarh

Yesterday's Deep Depression over coastal Odisha moved northwestwards and weakened into a Depression in the same mid-night (2330 hours IST) of 9th September, 2024 over interior Odisha. It then moved west-northwestwards and lay centered at 0830 hours IST of today, the 10th September, 2024 over North Chhattisgarh near latitude 21.9°N and longitude 82.8°E, 70 km east-southeast of Bilaspur (Chhattisgarh), 140 km northeast of Raipur (Chhattisgarh) and 220 km east of Malanjkhanda (East Madhya Pradesh).

It is very likely to move west-northwestwards across north Chhattisgarh and weaken into a well marked low pressure area over Chhattisgarh and adjoining East Madhya Pradesh around evening of today, the 10th September.

Forecast track and intensity are given in the following table:

Date/Time (IST)	Position (Lat. °N/ Long. °E)	Maximum Sustained Surface Wind Speed (Kmph)	Category Of Cyclonic Disturbance
10.09.24/0830	21.9/82.8	40-50 gusting to 60	Depression
10.09.24/1130	22.0/82.4	35-45 gusting to 55	Depression
10.09.24/1730	22.3/81.5	25-35 gusting to 45	Well Marked Low Pressure Area

Warnings:

(i) Rainfall warning

Chhattisgarh: Light to moderate rainfall at most places is very likely with **heavy to very heavy rainfall** at a few places on 10th September.

East Madhya Pradesh: Light to moderate rainfall at most places is very likely with **heavy to very heavy rainfall** at a few places and **extremely heavy falls** at isolated places on 10th and **heavy to very heavy rainfall** at isolated places during 11th to 14th September.

West Madhya Pradesh: Light to moderate rainfall at many places is very likely with **heavy to very heavy rainfall** at isolated places on 10th; **heavy to very heavy rainfall** at a few places with **extremely heavy rainfall** at isolated places on 11th; **heavy to very heavy rainfall** at a few places during 12th to 14th September.

Vidarbha: Light to moderate rainfall at most places is likely with **heavy to very heavy rainfall** at a few places on 10th and 11th September.

South Uttar Pradesh: Light to moderate rainfall at many places is likely with **heavy rainfall** at isolated places on 10th and heavy to very heavy at isolated places during 11th – 13th September.

Odisha: Light to moderate rainfall at many places is very likely with **heavy rainfall** at isolated places over northwest Odisha on 10th September.

Contact: Cyclone Warning Division, Office of the Director General of Meteorology, India Meteorological Department, Ministry of Earth Sciences, E-mail: cyclonewarningdivision@gmail.com, Website: rsmcnewdelhi.imd.gov.in, Spatial rainfall distribution: Isolated: <25%, A few: 26-50%, Many: 51-75%, Most: 76-100%, Rainfall amount (mm): Heavy rain: 64.5 – 115.5, Very heavy rain: 115.6 – 204.4, Extremely heavy rain: 204.5 or more.

(ii) Wind warning

Squally weather with wind speed reaching 40-50 kmph gusting to 60 kmph is likely over north Chhattisgarh till 10th September evening. It will decrease gradually thereafter.

(iii) Flash Flood Guidance: (Graphics Attached)

24 hours Outlook for the Flash Flood Risk (FFR) till 0530 IST of 11-09-2024 :

Low to Moderate flash flood risk likely over a few watersheds of following Met Sub-divisions during next 24 hours

Chhattisgarh - Baloda Bazar, Bastar, Bijapur, Bilaspur, Dantewara, Durg, Janjgir_Champa, Jashpur, Korba, Mungeli, Narayanpur, Rajnandgaon, Sukma and Surguja districts.

East Madhya Pradesh - Anuppur, Balaghat, Chhindwara, Damoh, Dindori, Katni, Mandla, Narshimapura, Panna, Seoni, Shahdol and Umaria districts.

Vidarbha - Bhandara, Chandrapur, Gadchiroli, Gondiya and Nagpur districts.

Surface runoff/ Inundation may occur at some fully saturated soils & low-lying areas over area of concern as shown in map due to expected rainfall occurrence in next 24 hours.

(iv) Impact Expected (Chhattisgarh, Madhya Pradesh, Vidarbha and South Uttar Pradesh due to heavy rainfall and squally wind)

- ✓ Localized Flooding of roads, water logging in low lying areas and closure of underpasses mainly in urban areas of the above region.
- ✓ Occasional reduction in visibility due to heavy rainfall.
- ✓ Disruption of traffic in major cities and roadways due to water logging in roads leading to increased travel time.
- ✓ Minor damage to kutchra roads.
- ✓ Possibilities of damage to vulnerable structure.
- ✓ Localized Landslides/Mudslides/landslips/mud slips/land sinks/mud sinks.
- ✓ Damage to horticulture and standing crops in some areas due to inundation and wind.
- ✓ It may lead to riverine flooding in some river catchments (for riverine flooding please visit Web page of CWC)

(v) Action Suggested (Chhattisgarh, Madhya Pradesh, Vidarbha and South Uttar Pradesh)

- ✓ Judicious regulation of surface transports including railways and roadways.
- ✓ Check for traffic congestion on your route before leaving for your destination.
- ✓ Follow any traffic advisories that are issued in this regard.
- ✓ Avoid going to areas that face the water logging problems often.
- ✓ Avoid staying in vulnerable structure.

(vi) Agromet advisories for Heavy Rainfall likely over various parts of the country

- ✓ Provide mechanical support to horticultural crops & staking to vegetables.
- ✓ Keep the harvested produce at safer place.

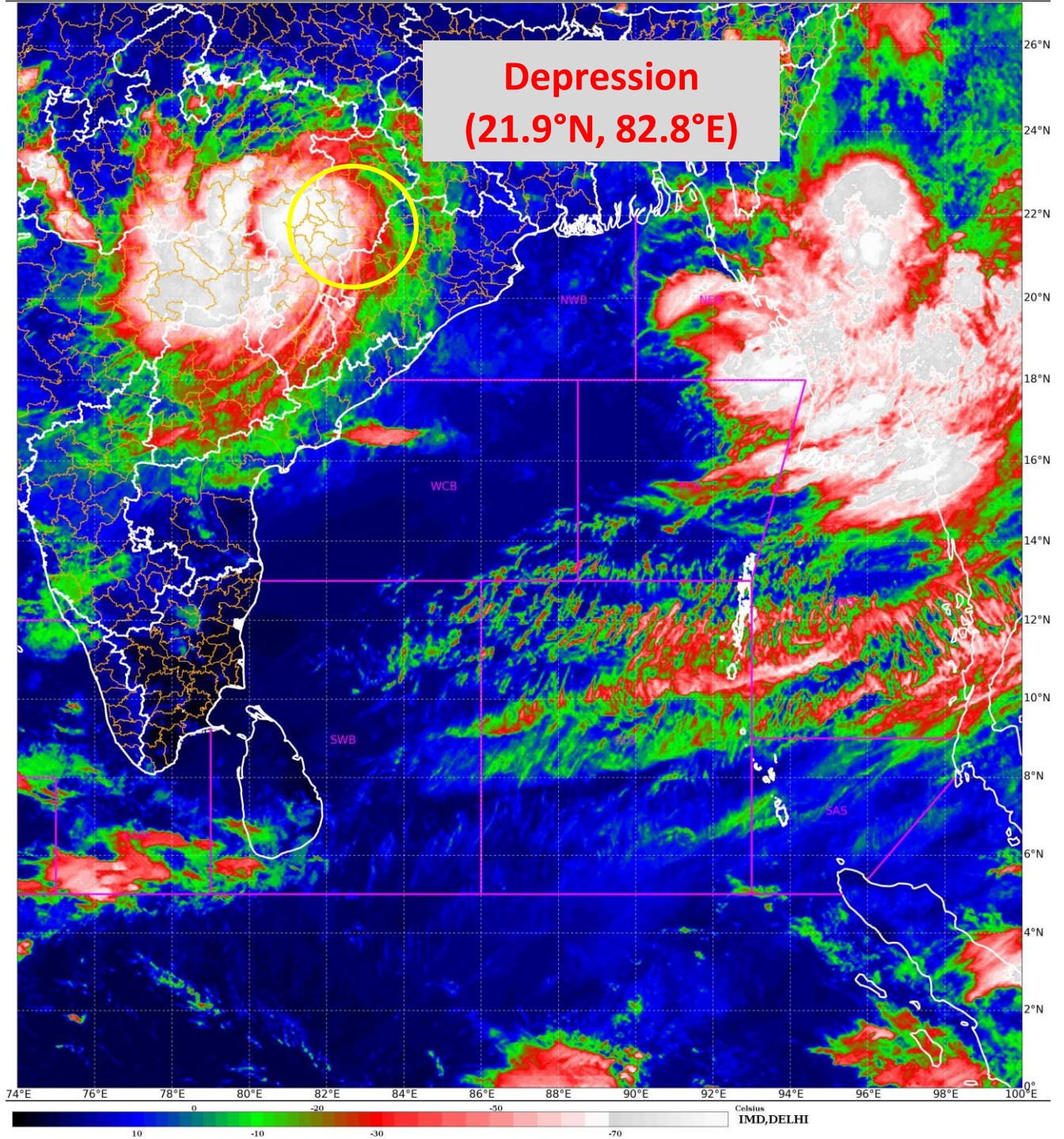
All associated graphics have been kept in Annexure-I. The 24 hours accumulated realised rainfall (≥ 7 cm) ending at 0830 hours IST of 10th September is kept in Annexure-II.

Next Press Release will be issued at 1430 hours IST of tomorrow, the 11th September, 2024.

Contact: Cyclone Warning Division, Office of the Director General of Meteorology, India Meteorological Department, Ministry of Earth Sciences, E-mail: cyclonewarningdivision@gmail.com, Website: rsmcnewdelhi.imd.gov.in, Spatial rainfall distribution: Isolated: <25%, A few: 26-50%, Many: 51-75%, Most: 76-100%, Rainfall amount (mm): Heavy rain: 64.5 – 115.5, Very heavy rain: 115.6 – 204.4, Extremely heavy rain: 204.5 or more.

SAT : INSAT-3DR IMG
 IMG_TIR1_TEMP 10.8 um
 L1C Mercator

10-09-2024/(0315 to 0342) GMT
 10-09-2024/(0845 to 0912) IST



Contact: Cyclone Warning Division, Office of the Director General of Meteorology, India Meteorological Department, Ministry of Earth Sciences, E-mail: cyclonewarningdivision@gmail.com, Website: rsmcnewdelhi.imd.gov.in, Spatial rainfall distribution: Isolated: <25%, A few: 26-50%, Many: 51-75%, Most: 76-100%, Rainfall amount (mm): Heavy rain: 64.5 – 115.5, Very heavy rain: 115.6 – 204.4, Extremely heavy rain: 204.5 or more.



**OBSERVED AND FORECAST TRACK OF DEPRESSION OVER NORTH CHHATTISGARH
BASED ON 0300 UTC (0830 IST) OF 10th SEPTEMBER, 2024.**

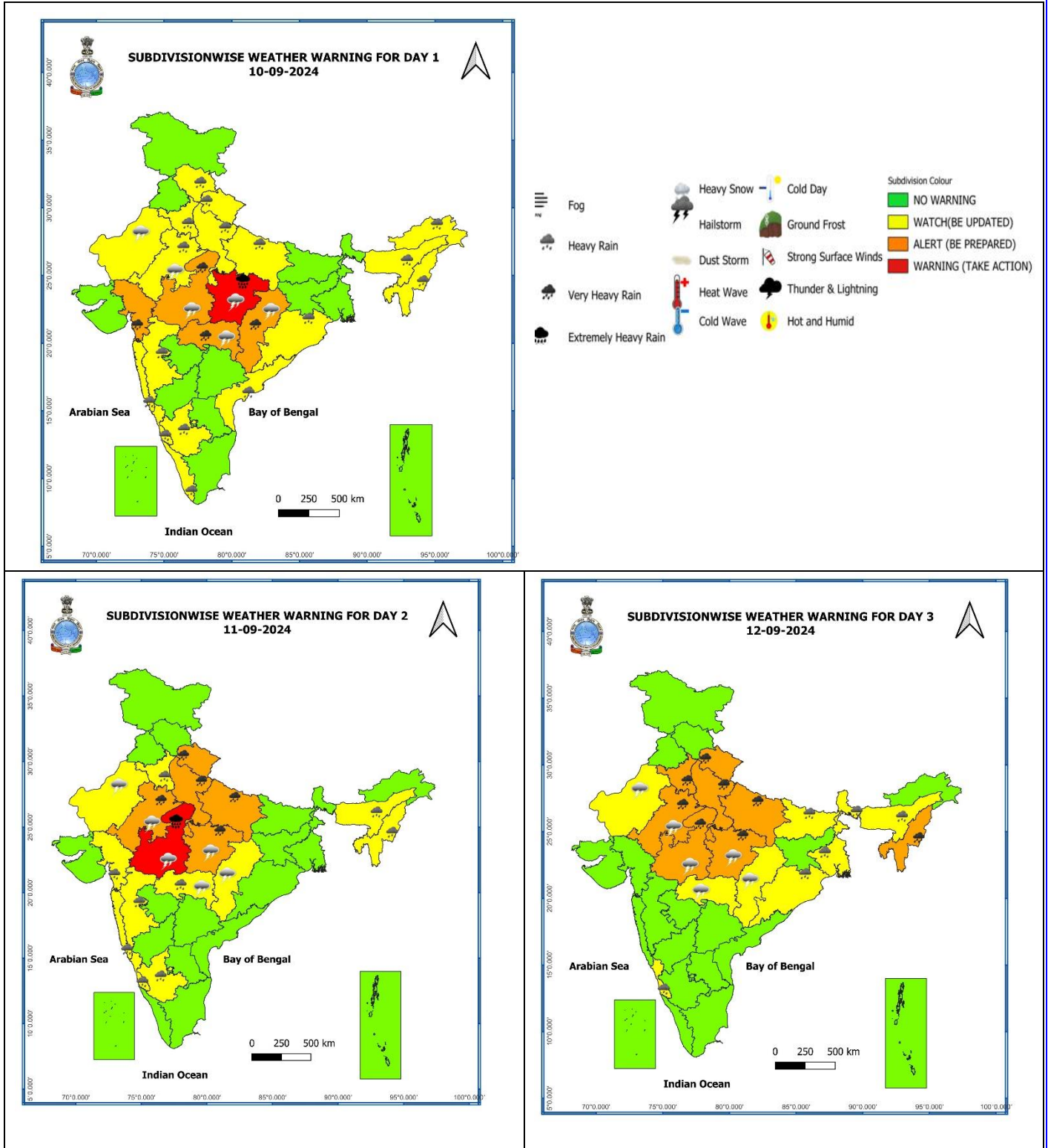


DATE/TIME IN UTC
 IST=UTC + 0530
 L: LOW PRESSURE AREA
 WML: WELL MARKED LOW PRESSURE AREA
 D: DEPRESSION (17-27 KT)
 DD: DEEP DEPRESSION (28-33 KT)
 CS: CYCLONIC STORM (34-47 KT)
 SCS: SEVERE CYCLONIC STORM (48-63KT)
 VSCS: VERY SEVERE CYCLONIC STORM (64-89 KT)
 ESCS: EXTREMELY SEVERE CYCLONIC STORM (90-119 KT)
 SuCS: SUPER CYCLONIC STORM (≥ 120 KT)

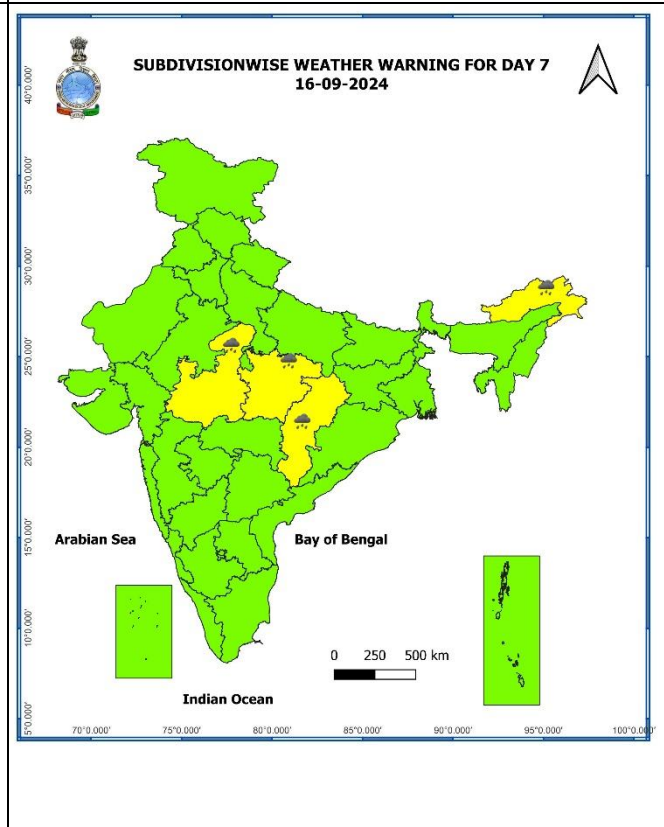
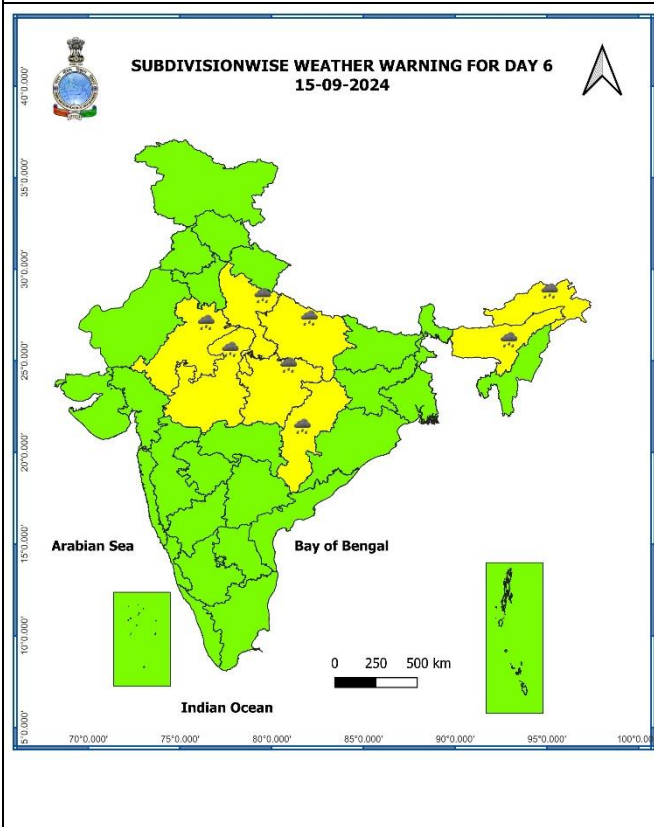
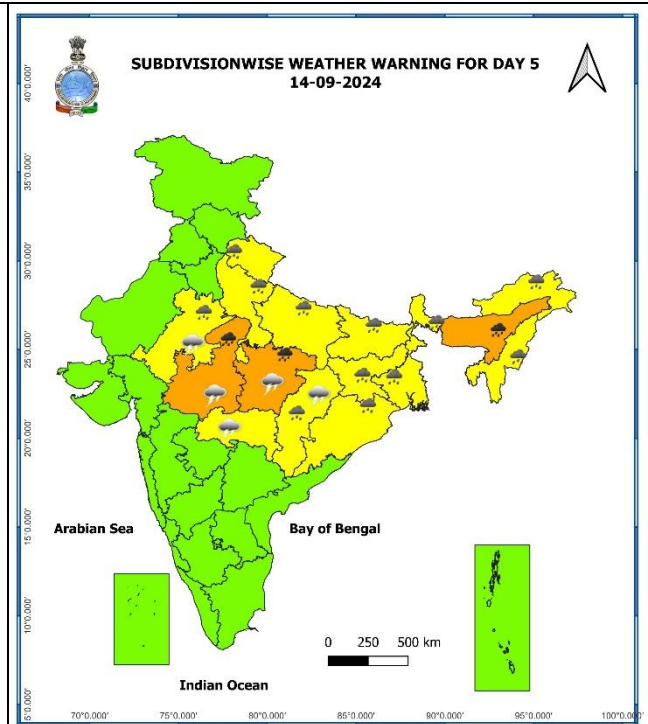
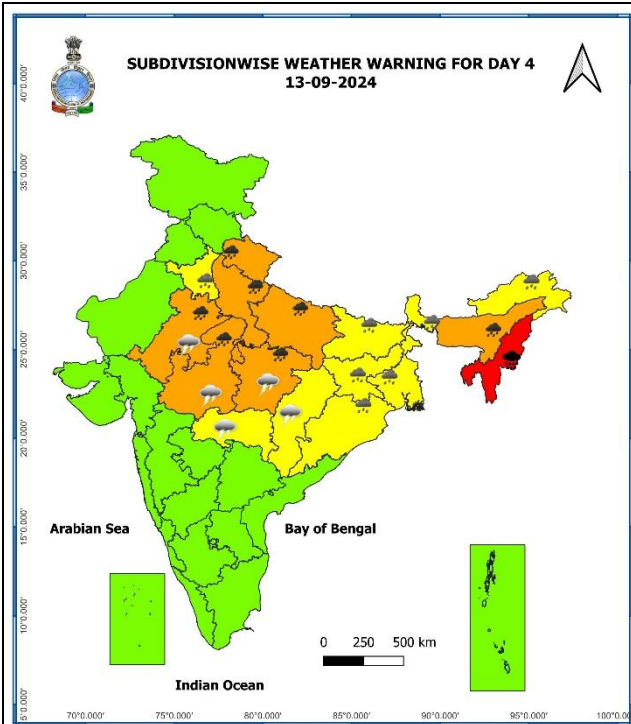
- LESS THAN 34 KT
- 34-47 KT
- ≥ 48 KT
- OBSERVED TRACK
- FORECAST TRACK
- CONE OF UNCERTAINTY

Contact: Cyclone Warning Division, Office of the Director General of Meteorology, India Meteorological Department, Ministry of Earth Sciences, E-mail: cyclonewarningdivision@gmail.com, Website: rsmcnewdelhi.imd.gov.in, Spatial rainfall distribution: Isolated: <25%, A few: 26-50%, Many: 51-75%, Most: 76-100%, Rainfall amount (mm): Heavy rain: 64.5 – 115.5, Very heavy rain: 115.6 – 204.4, Extremely heavy rain: 204.5 or more.

Warning Graphics



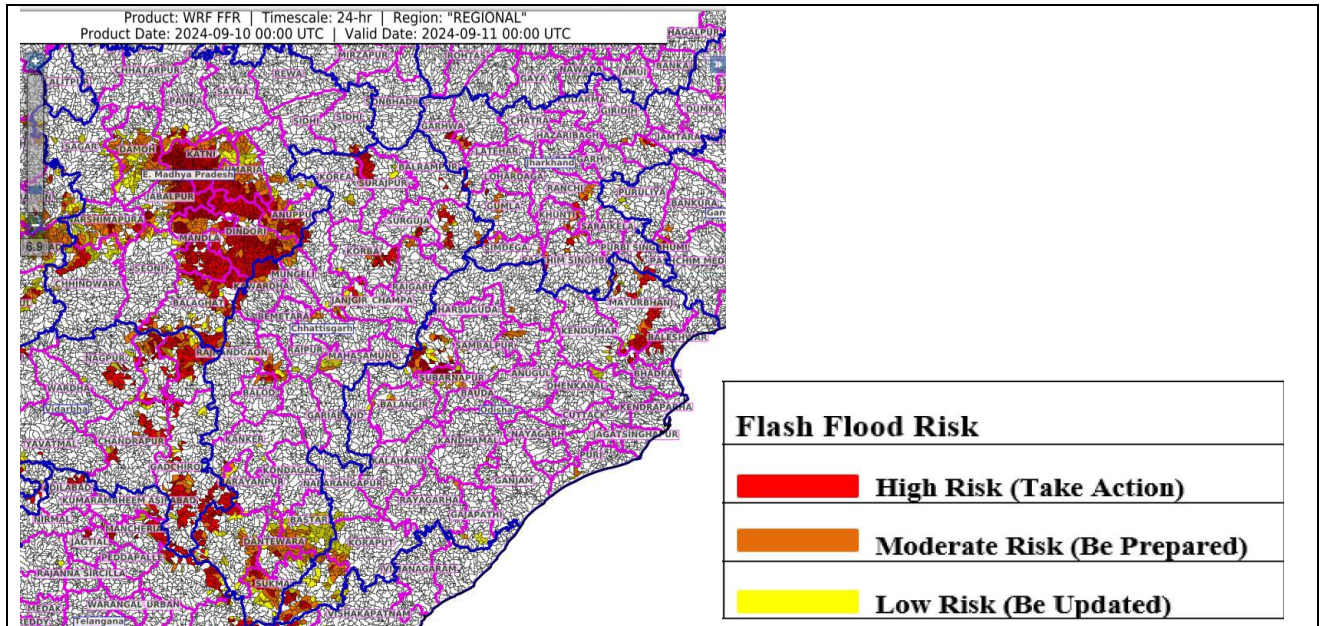
Contact: Cyclone Warning Division, Office of the Director General of Meteorology, India Meteorological Department, Ministry of Earth Sciences, E-mail: cyclonewarningdivision@gmail.com, Website: rsmcnewdelhi.imd.gov.in, Spatial rainfall distribution: Isolated: <25%, A few: 26-50%, Many: 51-75%, Most: 76-100%, Rainfall amount (mm): Heavy rain: 64.5 – 115.5, Very heavy rain: 115.6 – 204.4, Extremely heavy rain: 204.5 or more.



- Action may be taken based on **ORANGE AND RED** COLOUR warnings.
- Vulnerable regions likely urban and hilly areas action may be initiated for heavy rainfall warning.
- As the lead period increases forecast accuracy decreases.

Contact: Cyclone Warning Division, Office of the Director General of Meteorology, India Meteorological Department, Ministry of Earth Sciences, E-mail: cyclonewarningdivision@gmail.com, Website: rsmcnewdelhi.imd.gov.in, Spatial rainfall distribution: Isolated: <25%, A few: 26-50%, Many: 51-75%, Most: 76-100%, Rainfall amount (mm): Heavy rain: 64.5 – 115.5, Very heavy rain: 115.6 – 204.4, Extremely heavy rain: 204.5 or more.

Flash Flood Guidance



24 hours Outlook for the Flash Flood Risk (FFR) till 0530 IST of 11-09-2024 :

Low to Moderate flash flood risk likely over few watersheds & neighbourhoods of following Met Sub-divisions during next 24 hours

Chhattisgarh - Baloda Bazar, Bastar, Bijapur, Bilaspur, Dantewara, Durg, Janjgir_Champa, Jashpur, Korba, Mungeli, Narayanpur, Rajnandgaon, Sukma and Surguja districts.

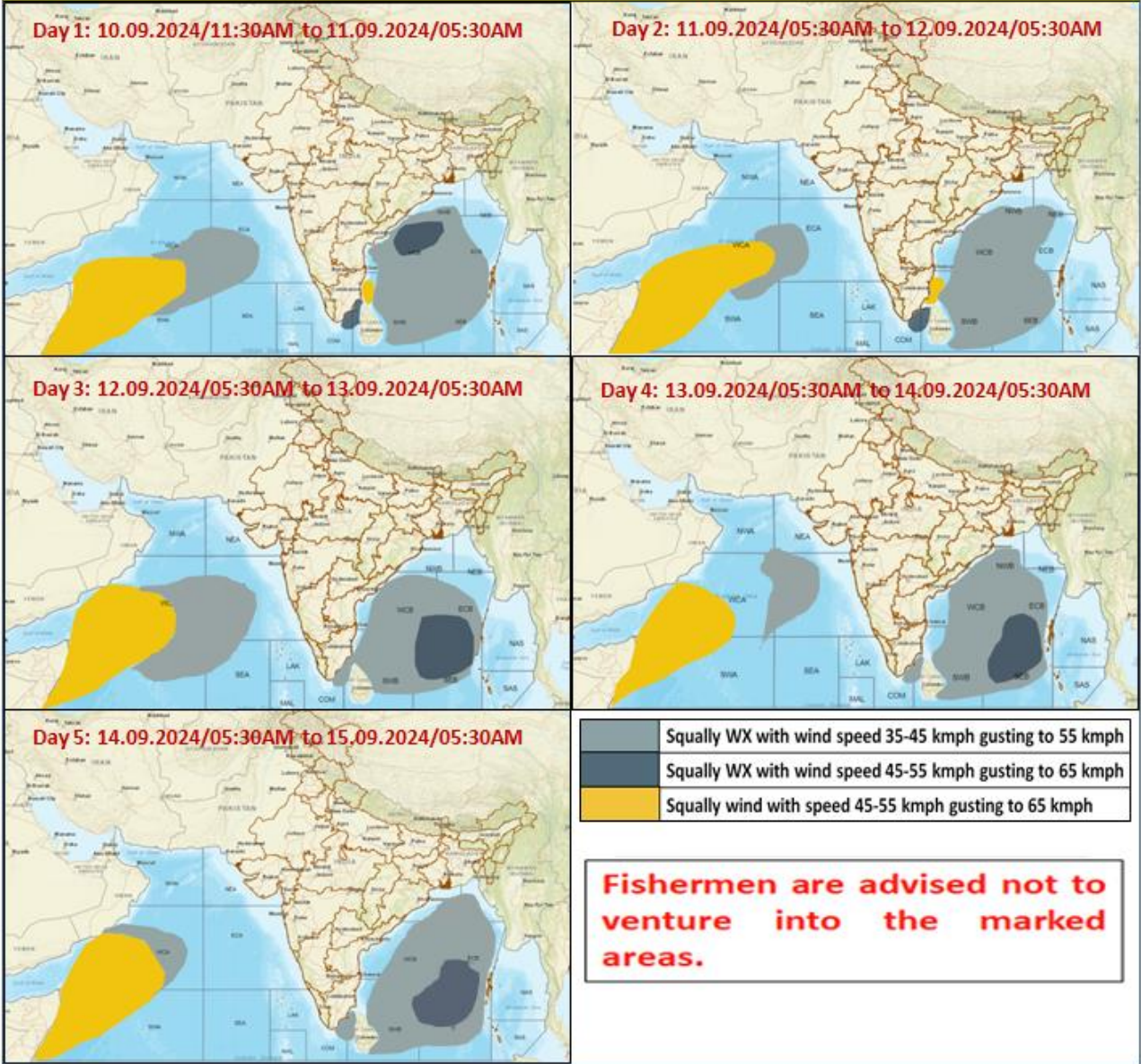
East Madhya Pradesh - Anuppur, Balaghat, Chhindwara, Damoh, Dindori, Katni, Mandla, Narshimapura, Panna, Seoni, Shahdol and Umaria districts.

Vidarbha - Bhandara, Chandrapur, Gadchiroli, Gondiya and Nagpur districts.

Surface runoff/ Inundation may occur at some fully saturated soils & low-lying areas over area of concern as shown in map due to expected rainfall occurrence in next 24 hours.

Contact: Cyclone Warning Division, Office of the Director General of Meteorology, India Meteorological Department, Ministry of Earth Sciences, E-mail: cyclonewarningdivision@gmail.com, Website: rsmcnewdelhi.imd.gov.in, Spatial rainfall distribution: Isolated: <25%, A few: 26-50%, Many: 51-75%, Most: 76-100%, Rainfall amount (mm): Heavy rain: 64.5 – 115.5, Very heavy rain: 115.6 – 204.4, Extremely heavy rain: 204.5 or more.

Fishermen Warning Graphics



Contact: Cyclone Warning Division, Office of the Director General of Meteorology, India Meteorological Department, Ministry of Earth Sciences, E-mail: cyclonewarningdivision@gmail.com, Website: rsmcnewdelhi.imd.gov.in, Spatial rainfall distribution: Isolated: <25%, A few: 26-50%, Many: 51-75%, Most: 76-100%, Rainfall amount (mm): Heavy rain: 64.5 – 115.5, Very heavy rain: 115.6 – 204.4, Extremely heavy rain: 204.5 or more.

Significant rainfall recorded from 0830 hrs IST of 9th September to 0830 hrs IST of today, the 10th September, 2024 (cm):

- **Vidarbha:** Gondia Ap (Gondia) 29, Deori (Gondia) 21, Gondia (Gondia) 21, Salekasa (Gondia) 20, Sadakarjuni (Gondia) 19, Goregaon (Gondia) 18, Korchi (Gadchiroli) 15, Arjuni Morgaon (Gondia) 14, Amgaon (Gondia) 14, Lakhandur (Bhandara) 13, Desaiganj (Gadchiroli) 13, Sakoli (Bhandara) 12, Kuhi (Nagpur) 10, Sindewahi (Chandrapur) 10, Lakhani (Bhandara) 9, Mulchera (Gadchiroli) 9, Gadchiroli (Gadchiroli) 9, Bramhapuri (Chandrapur) 9, Dhanora (Gadchiroli) 9, Chamorshi (Gadchiroli) 8, Saoli (Chandrapur) 8, Bhamragad (Gadchiroli) 8, Kurkheda (Gadchiroli) 7, Pauni (Bhandara) 7, Nagbhir (Chandrapur) 7, Etapalli (Gadchiroli) 7,
- **Chhattisgarh:** Lal Bahadur Nagar (Rajnandgaon) 24, Sukma (Sukma) 19, Dongargarh (Rajnandgaon) 19, Gurur (Balod) 19, Rajnandgaon (Rajnandgaon) 18, Bhanupratappur (Kanker) 18, Khairagarh (Khairagarh Chh Gandai) 17, Balod (Balod) 16, Durgkondal (Kanker) 16, Baloda Bazar (Baloda Bazar) 16, Mohla (Mohala Manpur Chowki) 15, Lawan (Baloda Bazar) 15, Chhuria (Rajnandgaon) 15, Dhanora (Kondagaon) 15, Dongargaon (Rajnandgaon) 15, Bhatapara (Baloda Bazar) 15, Marri Bangla Deori (Balod) 15, Pallari/palari (Baloda Bazar) 14, Charama (Kanker) 14, Pithora (Mahasamund) 14, Dhamtari (Dhamtari) 14, Keshkal (Kondagaon) 14, Gangalur (Bijapur) 14, Doundi (Balod) 14, Pakhanjur (Kanker) 14, Khadgaon (Mohala Manpur Chowki) 14, Nerharpur (Kanker) 13, Suhela (Baloda Bazar) 13, Kukrel (Dhamtari) 13, Sonakhan (Baloda Bazar) 13, Antagarh (Kanker) 13, Manpur (Mohala Manpur Chowki) 12, Labhandih (Raipur) 12, Arjunda (Balod) 12, Darbha (Bastar) 12, Kanker (Kanker) 12, Kashdol (Baloda Bazar) 12, Raipur (Raipur) 12, Bhakhara (Dhamtari) 12, Komakhan (Mahasamund) 12,
- **Odisha:** Lanjigarh (Kalahandi) 23, Madanpur Rampur (Kalahandi) 22, Tikarpara (Angul) 15, Ambadola (Rayagada) 14, Nawapara (Nawapara) 13, Kotpad (Koraput) 11, Belgaon (Bolangir) 11, Birmaharajpur (Sonepur) 11, Malkangiri (Malkangiri) 10, Bissem-cuttack (Rayagada) 10, Athmalik (Angul) 10, Barmul (Nayagarh) 9, Lamataput (Koraput) 9, Kosagumda (Nawarangpur) 8, Harabhanga (Boudhgarh) 8, Mathili (Malkangiri) 7, Nawarangpur (Nawarangpur) 7, Padia (Malkangiri) 7, Gaisilet (Bargarh) 7, Nawarangpur Pto (Nawarangpur) 7, Tarva (Sonepur) 7, Sonepur (Sonepur) 7, Nandahandi (Nawarangpur) 7, Jeypore (Koraput) 7, Dabugan (Nawarangpur) 7, Narla (Kalahandi) 7, Borigumma (Koraput) 7, Rairakhola (Sambalpur) 7,
- **East Madhya Pradesh:** Kirnapur (Balaghat) 20, Matiyari (Mandla) 13, Baihar (Balaghat) 13, Lanji (Balaghat) 12, Lalburra (Balaghat) 10, Bichhia (Mandla) 9, Dhanora (Seoni) 7, Paraswada (Balaghat) 7, Harrai (Chindwara) 7; East Madhya Pradesh: Kirnapur (Balaghat) 20, Matiyari (Mandla) 13, Baihar (Balaghat) 13, Lanji (Balaghat) 12, Lalburra (Balaghat) 10, Bichhia (Mandla) 9, Dhanora (Seoni) 7, Paraswada (Balaghat) 7, Harrai (Chindwara) 7;
- **West Madhya Pradesh:** Raoti (Ratlam) 10, Satwas (Dewas) 9, Gogawan (Khargone) 9, Nasrullahganj (Sehore) 7, Petlawad (Jhabua) 7;