



**Government of India
Ministry of Earth Sciences**



India Meteorological Department

PRESS RELEASE-11

Time of issue: 1200 hours IST

Dated: 18th September, 2024

Sub: Well Marked Low Pressure Area over central parts of north Madhya Pradesh & neighbourhood

Yesterday's Depression over Jharkhand and adjoining north Chhattisgarh moved west-northwestwards and weakened into a **Well Marked Low Pressure Area** over **northeast Madhya Pradesh and adjoining southwest Uttar Pradesh** in the early morning (0530 hours IST) and lay over **central parts of north Madhya Pradesh & neighbourhood** in the morning (0830 hours IST) of today, the 18th September 2024.

It is likely to weaken into a low pressure area over the same area during next 24 hours.

All associated graphics have been kept in Annexure-I. The 24 hours accumulated realised rainfall (≥ 7 cm) ending at 0830 hours IST of 17th September is kept in Annexure-II.

This is the last press release with respect to this system. However, regular updates shall continue from National Weather Forecasting Centre and concerned Regional Meteorological Centres and Meteorological Centres in association with the remnant of this system and other prevailing weather systems over the country.

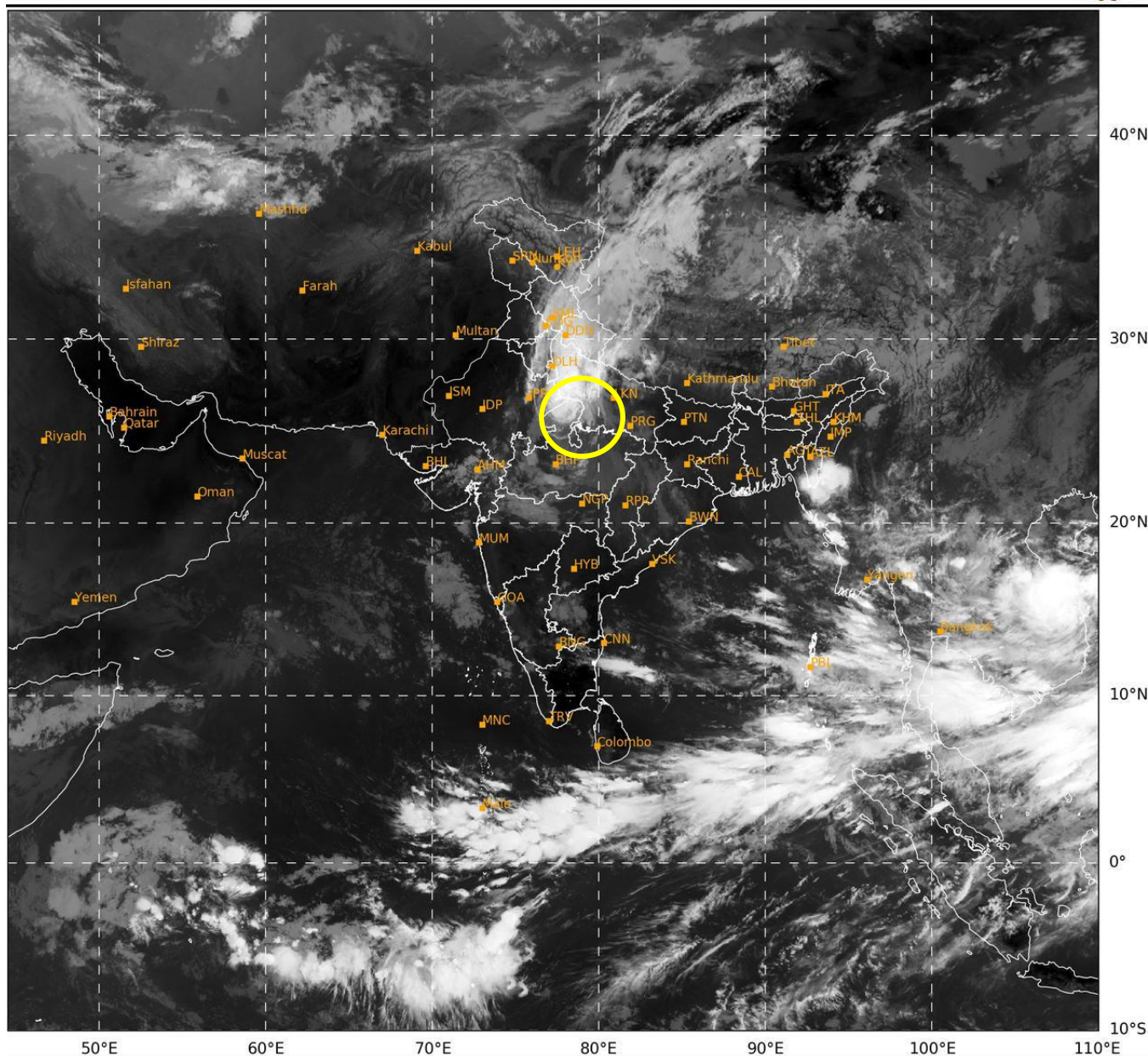
For regular updates kindly visit www.rsmcnewdelhi.imd.gov.in and www.mausam.imd.gov.in

Contact: Cyclone Warning Division, Office of the Director General of Meteorology, India Meteorological Department, Ministry of Earth Sciences, E-mail: cyclonewarningdivision@gmail.com, Website: rsmcnewdelhi.imd.gov.in, Spatial rainfall distribution: Isolated: <25%, A few: 26-50%, Many: 51-75%, Most: 76-100%, Rainfall amount (mm): Heavy rain: 64.5 – 115.5, Very heavy rain: 115.6 – 204.4, Extremely heavy rain: 204.5 or more.

Annexure-I

SAT : INSAT-3DR IMG
IMG_TIR1 10.8 um
L1C Mercator

18-09-2024/(0315 to 0342) GMT
18-09-2024/(0845 to 0912) IST



427

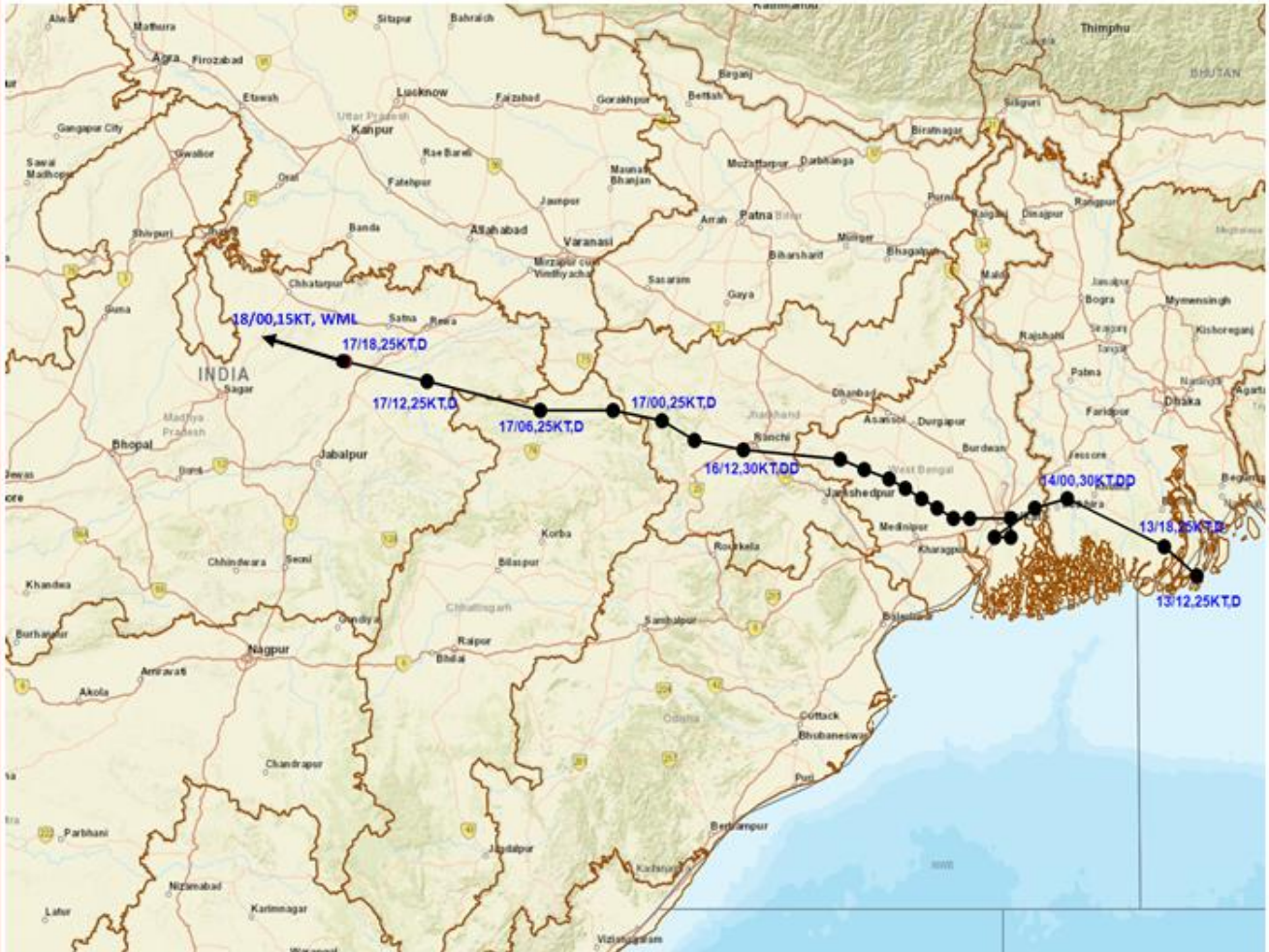
939

IMD, DELHI

Contact: Cyclone Warning Division, Office of the Director General of Meteorology, India Meteorological Department, Ministry of Earth Sciences, E-mail: cyclonewarningdivision@gmail.com, Website: rsmcnewdelhi.imd.gov.in, Spatial rainfall distribution: Isolated: <25%, A few: 26-50%, Many: 51-75%, Most: 76-100%, Rainfall amount (mm): Heavy rain: 64.5 – 115.5, Very heavy rain: 115.6 – 204.4, Extremely heavy rain: 204.5 or more.



OBSERVED TRACK OF DEEP DEPRESSION OVER NORTHEAST BAY OF BENGAL DURING 13TH - 18TH SEPTEMBER 2024.



DATE/TIME IN UTC
IST=UTC + 0530
L: LOW PRESSURE AREA
WML: WELL MARKED LOW PRESSURE AREA
D: DEPRESSION (17-27 KT)
DD: DEEP DEPRESSION (28-33 KT)
CS: CYCLONIC STORM (34-47 KT)
SCS: SEVERE CYCLONIC STORM (48-63KT)
VSCS: VERY SEVERE CYCLONIC STORM (64-89 KT)
ESCS: EXTREMELY SEVERE CYCLONIC STORM (90-119 KT)
SuCS: SUPER CYCLONIC STORM (≥ 120 KT)

- LESS THAN 34 KT
- 34-47 KT
- ≥ 48 KT
- OBSERVED TRACK
- FORECAST TRACK
- CONE OF UNCERTAINTY

Contact: Cyclone Warning Division, Office of the Director General of Meteorology, India Meteorological Department, Ministry of Earth Sciences, E-mail: cyclonewarningdivision@gmail.com, Website: rsmcnewdelhi.imd.gov.in, Spatial rainfall distribution: Isolated: <25%, A few: 26-50%, Many: 51-75%, Most: 76-100%, Rainfall amount (mm): Heavy rain: 64.5 – 115.5, Very heavy rain: 115.6 – 204.4, Extremely heavy rain: 204.5 or more.

Significant amount of rainfall (from 0830 hours IST of 17.09.2024 to 0830 hours IST of 18.09.2024) (in cm):

East Uttar Pradesh: Attarra (Banda) 16, Kanpur Obsy (Kanpur City) 12, Mau Tehsil (Chitrakoot) 12, Beberu (Banda) 11, Manikpur (Chitrakoot) 11, Rajapur (Chitrakoot) 11, Karwi (Chitrakoot) 11, Kanpur (Kanpur City) 10, Banda (Banda) 10, Lalganj (Mirzapur) 10, Tirwa (Kannauj) 9, Koraon (Prayagraj) 9, Chhibramau (Kannauj) 8, Karchhana (Prayagraj) 7, Ghorawal (Sonbhadra) 7, Kannauj (Kannauj) 7, Prayagraj (Prayagraj) 7, Mirzapur Tehsil (Mirzapur) 7, Prayagraj Sadar (Prayagraj) 7, Bhognipur (Kanpur Dehat) 7,;

West Uttar Pradesh: Rath (Hamirpur) 22, Hamirpur Obsy (Hamirpur) 13, Etawah Obsy (Etawah) 12, Chakkar Nagar (Etawah) 12, Shikohabad (Firozabad) 8, Orai (Jalaun) 7, Bharthana (Etawah) 7;

East Madhya Pradesh: Hanumana (Rewa) 13, Chitrangi (Singrauli) 10, Rewa (Rewa) 10, Gaurihar (Chhatarpur) 10, Mauganj (Rewa) 9, Sarai (Singrauli) 9, Ajaigarh (Panna) 9, Mangawan (Rewa) 8, Nowgong (Chhatarpur) 8, Churhat (Sidhi) 8, Devendranagar (Panna) 7, Naigarhi (Rewa) 7, Sidhi (gopadbanas) (Sidhi) 7, Nagode (Satna) 7, Birsingpur (Satna) 7, Raipurkarchuliyani (Rewa) 7, Sihawal (Sidhi) 7, Gudh (Rewa) 7, Jawa (Rewa) 7, Shahgarh (Sagar) 7, Unchehra (Satna) 7;

Jharkhand: Lohardaga (Lohardaga) 8, Kharsema (Seraikela-kharsawan) 8;

West Madhya Pradesh: Roan (Bhind) 15, Lahar (Bhind) 12, Mihona (Bhind) 11, Gohad (Bhind) 11, Mau (Bhind) 11, Gwalior (Gwalior) 9, Ambah (Morena) 9, Bhandar (Datia) 9, Dabra (Gwalior) 9, Bhind (Bhind) 8, Porsa (Morena) 8, Datia (Datia) 8, Ater (Bhind) 7, Ghatigaon (Gwalior) 7, Gormi (Bhind) 7, Seodha(seondha) (Datia) 7;

Odisha: Dhenkanal (Dhenkanal) 13, Dhenkanal (Dhenkanal) 13, Bhuban (Dhenkanal) 12, Banki (Cuttack) 10, Korei (Jajpur) 10;