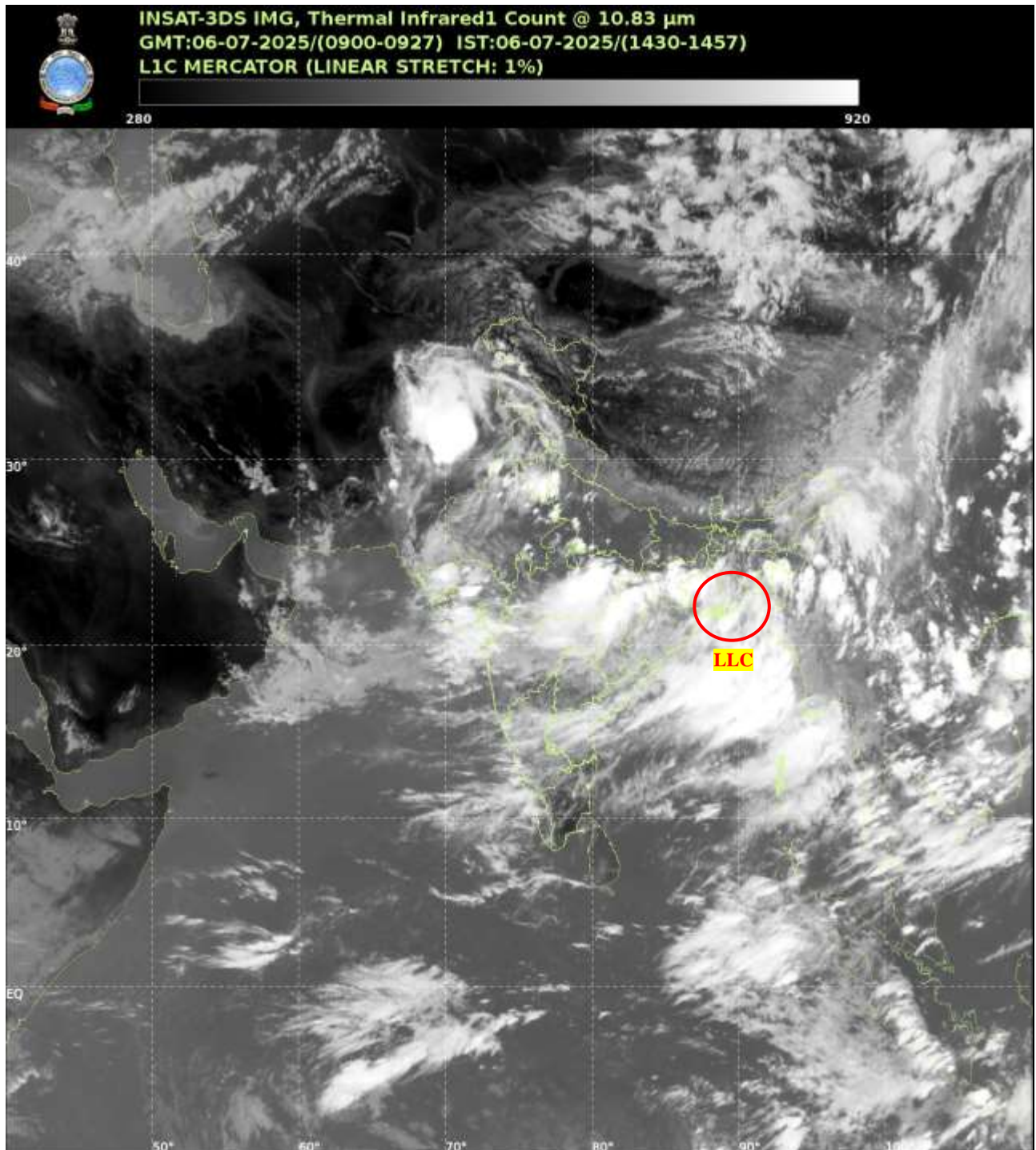




भारत मौसम विज्ञान विभाग
पृथ्वी विज्ञान मंत्रालय
India Meteorological Department
Ministry of Earth Sciences



**SATELLITE BULLETIN BASED ON SATELLITE
IMAGERIES AND PRODUCTS**
06.07.2025 TIME 0900 UTC



TCIN50 DEMS 060900
SATELLITE BULLETIN BASED ON INSAT-3DS PIC OF 060900 UTC (.)
REGION COVERED BETWEEN LAT 50.0°N TO 35.0°S AND LONG 40.0°E TO 125.0°E (.)

SALIENT FEATURES:-

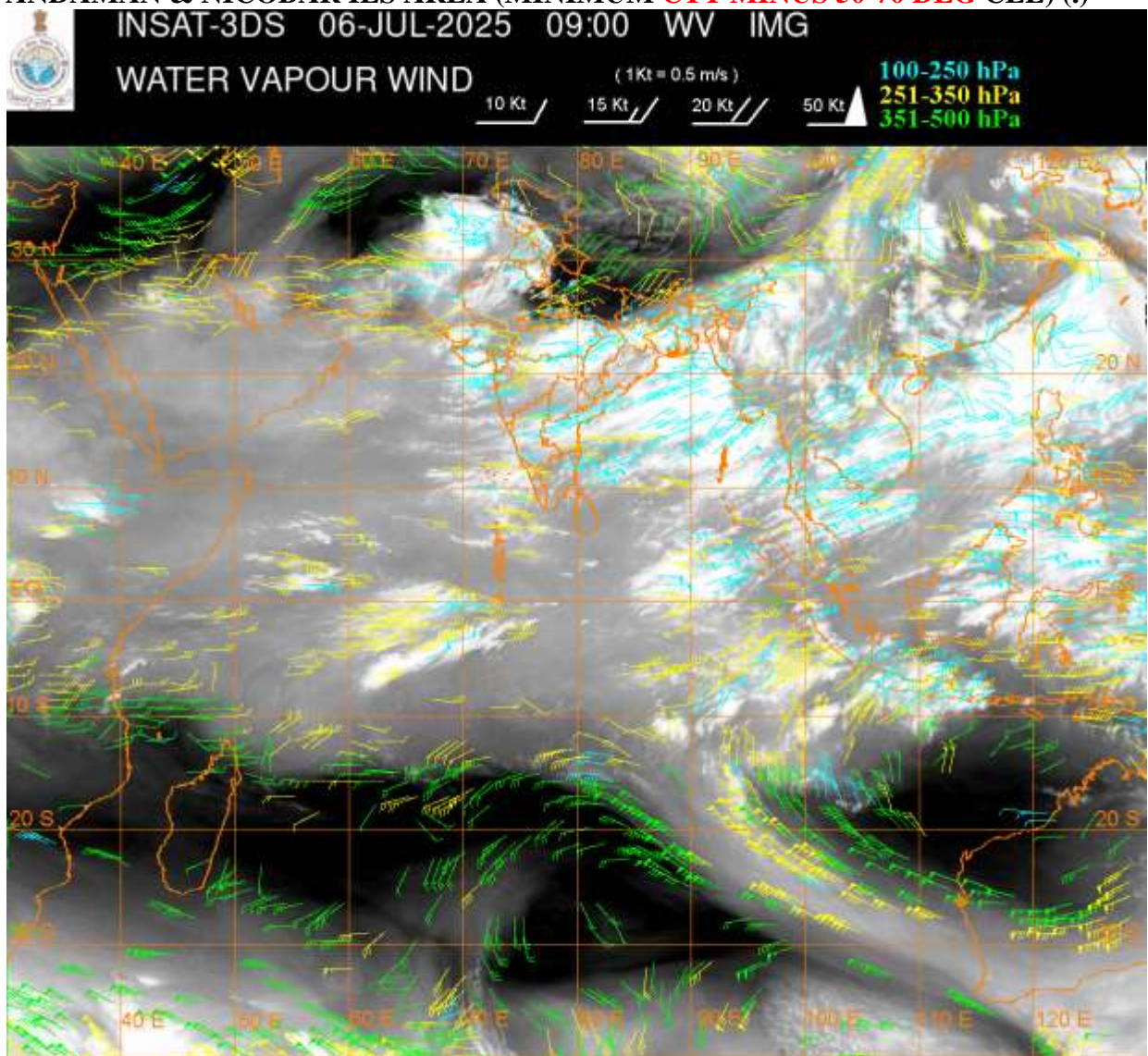
LLC OVER GWB & N/HOOD :-

LOW LEVEL CIRCULATION OVER GWB & N/HOOD (.)ASSTD WITH SCT LOW/MED CLOUDS
WITH EMBDD INTENSE TO VERY INTENSE CONVECTION OVER NORTH ADJ CENTRAL BAY
COTL ORS GWB S BD (MINIMUM **CTT MINUS 70-90 DEG CEL**) (.)

CONVECTIVE / THUNDERSTORM ACTIVITY:-

INTENSE TO VERY INTENSE CONVECTIVE / THUNDERSTORM ACTIVITY OBSERVED OVER
HARY DLH GWB MP CHTGH JHRKND (MINIMUM **CTT MINUS 70-90 DEG CEL**) (.)

**MODERATE TO INTENSE CONVECTIVE / THUNDERSTORM ACTIVITY OBSERVED OVER J&K
PJB HP ORS TRP MANI NW RAJ GUJ MAHA GOA KRNTK TLNGN RYLSM COTL AP KER LKSDP
ILS AREA ANDAMAN & NICOBAR ILS AREA (MINIMUM CTT MINUS 50-70 DEG CEL) (.)**



CLOUDS DESCRIPTION WITHIN INDIA:-

NORTH:-

**SCT TO BKN LOW/MED CLOUDS WITH EMBDD INT TO V INT CONVTN OVER HARY DLH AND
MOD TO INT CONVTN OVER J&K HP PJB (.) SCT LOW/MED CLOUDS WITH EMBDD ISOL WK TO
MOD CONVTN OVER LADAKH UTRKND UP (.)**

EAST:-

**SCT TO BKN LOW/MED CLOUDS WITH EMBDD INT TO V INT CONVTN OVER CHTGH GWB
JHRKND & S BD (.) SCT TO BKN LOW/MED CLOUDS WITH EMBDD MOD TO INT CONVTN OVER
ORS BHR TRP MANI & N BD (.) SCT LOW/MED CLOUDS WITH EMBDD ISOL WK TO MOD
CONVTN OVER SHWB SKM REST NE STATES (.)**

WEST:-

**SCT TO BKN LOW/MED CLOUDS WITH EMBDD INT TO V INT CONVTN OVER MP (.) SCT TO BKN
LOW/MED CLOUDS WITH EMBDD MOD TO INT CONVTN OVER NW RAJ GUJ MAHA GOA (.) SCT
LOW/MED CLOUDS WITH EMBDD WK TO MOD CONVTN OVER REST RAJ REST MP (.)**

SOUTH:-

**SCT LOW/MED CLOUDS WITH EMBDD MOD TO INT CONVTN OVER KRNTK TLNGN RYLSM
COTL AP KER LKSDP ILS AREA ANDAMAN & NICOBAR ILS AREA (.) SCT LOW/MED CLOUDS
WITH EMBDD ISOL WK TO MOD CONVTN OVER TN (.)**

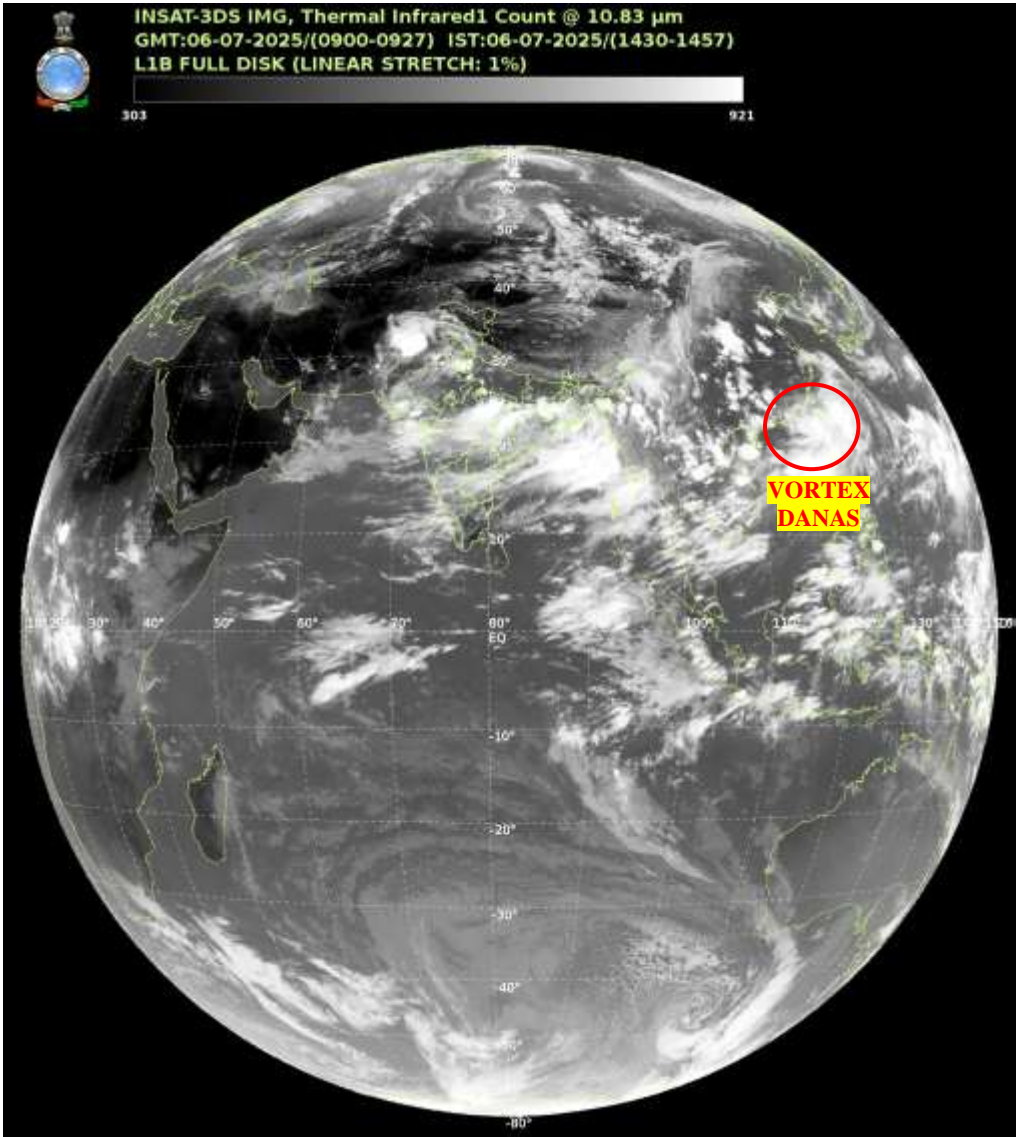
ARABIAN SEA:-

**SCT LOW/MED CLOUDS WITH EMBDD MOD TO INT CONVTN OVER GULF OF KUTCH GULF OF
CAMBAY EC & SE ARSEA LKSDP ILS AREA MALDIVES & COMORIN AREA (.) SCT LOW/MED
CLOUDS WITH EMBDD WK TO MOD CONVTN OVER REST ARSEA (.)**

BAY OF BENGAL & ANDAMAN SEA:-

SCT TO BKN LOW/MED CLOUDS WITH EMBDD INT TO V INT CONVTN OVER NORTH ADJ CENTRAL BAY AND NORTH ANDAMAN SEA (.) SCT LOW/MED CLOUDS WITH EMBDD MOD TO INT CONVTN OVER REST BAY AND SOUTH ANDAMAN SEA (.)

CLOUDS DESCRIPTION OUTSIDE INDIA:-



VORTEX (DANAS) OVER SOUTH CHINA SEA AND N/HOOD:-

VORTEX (**DANAS**) OVER SOUTH CHINA SEA AND N/HOOD (**AREA F05**) CENTERED NEAR **22.4N / 119.2E** (.) INTENSITY **T5.0/5.0** (.) MAXIMUM SUSTAINED WINDS **90-119 KTS** (.) ASSTD SCT TO BKN LOW/MED CLOUDS WITH EMBDD INT TO V INT CONVTN OVER AREA BET LAT 15.0N TO 25.0 N LONG 115.0E TO 125.0E & TAIWAN (.)

SCT LOW/MED CLOUDS WITH EMBDD MOD TO INT CONVTN OVER MALDIVES PAK BHUTAN TIBET CHINA YELLOW SEA EAST CHINA SEA TAIWAN MYANMAR THAILAND GULF OF THAILAND CAMBODIA LAOS VIETNAM GULF OF TONKIN HAINAN SUMATRA STR OF MALACCA MALAYSIA BORNEO SOUTH CHINA SEA JAVA ILS & SEA CELEBES ILS & SEA PHILIPPINES SULU SEA AND OVER INDIAN OCEAN BET LAT 5.0N TO 20.0S LONG 40.0E TO 110.0E (.)

TOO 06/1525 EF=

NNNN

LEGEND:-

REGION	NORTH	J&K HP PJB HARY DLH UP UTRKND
	EAST	BHR JHRKND CHTGH ORS WB SKM NORTH- EAST STATES

	WEST	RAJ MP GUJ MAHA GOA
	SOUTH	TLNGN AP KRNTK KER TN LKSDP ANDAMAN & NICOBAR ILS
CLOUD DISTRIBUTION	ISOL	ISOLATED (LESS THAN 25%)
	SCT	SCATTERED (25 TO 50%)
	BKN	BROKEN (51 TO 75%)
	SLD	SOLID (GREATER THAN 75%)
CLOUDS TOP TEMPERATURE	CTT	CLOUD TOP TEMPERATURE
CONVECTION	WK CONVTN	WEAK CONVECTION (CTT GREATER THAN -25°C)
	MOD CONVTN	MODERATE CONVECTION (CTT BETWEEN -25°C TO -40°C)
	INT CONVTN	INTENSE CONVECTION (CTT BETWEEN -41°C TO -70°C)
	V INT CONVTN	VERY INTENSE CONVECTION (CTT LESS THAN -70°C)
METEOROLOGICAL SUB- DIVISIONS, STATES & UNION TERITORIES	ARUPR	ARUNACHAL PRADESH
	BHR	BIHAR
	CHTGH	CHHATTISGARH
	COTL AP	COASTAL ANDHRA PRADESH
	COTL KRNTK	COASTAL KARNATAKA
	COTL ORS	COASTAL ORISSA
	GUJ	GUJARAT
	GWB	GANGETIC WEST BENGAL
	HARY	HARYANA
	DLH	DELHI
	HP	HIMACHAL PRADESH
	J&K	JAMMU AND KASHMIR
	JHRKND	JHARKHAND
	KER	KERALA
	KKN	KONKAN
	LKSDP	LAKSHADWEEP
	M MAHA	MADHYA MAHARASHTRA
	MAHA	MAHARASHTRA
	MANI	MANIPUR
	MEGHA	MEGHALAYA
	MIZO	MIZORAM
	MP	MADHYA PRADESH
	MRTHWD	MARATHWADA
	NAGA	NAGALAND
	N COTL AP	NORTH COASTAL ANDHRA PRADESH
	NIK	NORTH INTERIOR KARNATAKA
	ORS	ORISSA
	PJB	PUNJAB
	RAJ	RAJASTHAN
	RYLSM	RAYALASEEMA
	SAU & KUTCH	SAURASHTRA & KUTCH

	SHWB	SUB-HIMALAYAN WEST BENGAL
	SIK	SOUTH INTERIOR KARNATAKA
	SKM	SIKKIM
	TLNGN	TELANGANA
	TN	TAMIL NADU
	TRP	TRIPURA
	UP	UTTAR PRADESH
	UTRKND	UTTARAKHAND
	VID	VIDHARBHA
	SHWB	SUB HIMALAYAN WEST BENGAL
	GWB	GANGETIC WEST BENGAL
	ARSEA	ARABIAN SEA
	ILS	ISLANDS
MISCELLANEOUS	ASSW	IN ASSOCIATION WITH
	ASSTD	ASSOCIATED
	LLC	LOW LEVEL CIRCULATION
	EMBDD	EMBEDDED
	N/HOOD	NEIGHBOURHOOD
	EXT	EXTREME