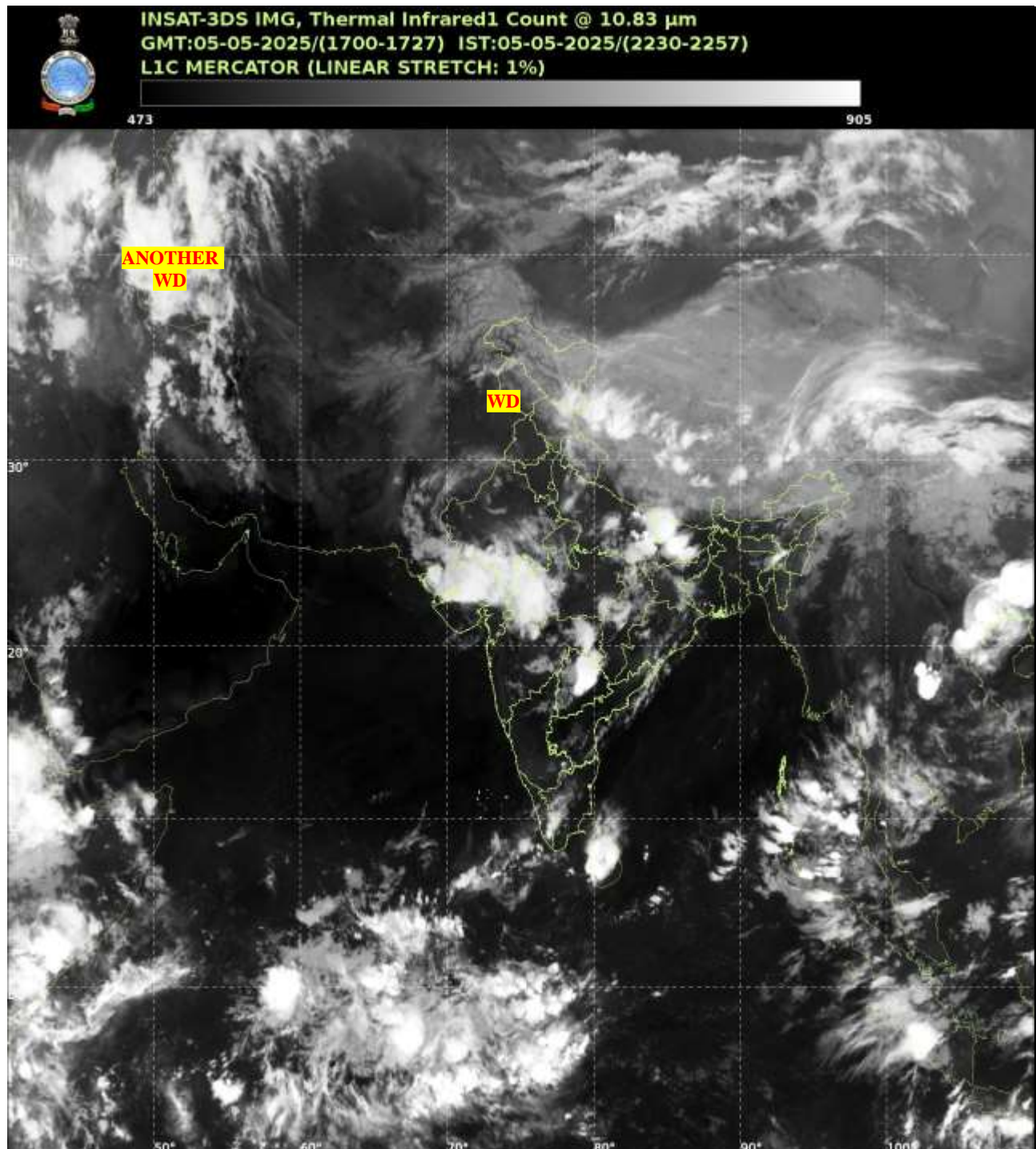




भारत मौसम विज्ञान विभाग  
पृथ्वी विज्ञान मंत्रालय  
India Meteorological Department  
Ministry of Earth Sciences



**SATELLITE BULLETIN BASED ON SATELLITE  
IMAGERIES AND PRODUCTS**  
**05.05.2025 TIME 1800 UTC**



TCIN50 DEMS 051800

SATELLITE BULLETIN BASED ON INSAT-3DS PIC OF 051700UTC (.)

REGION COVERED BETWEEN LAT 50.0°N TO 35.0°S AND LONG 40.0°E TO 125.0°E (.)

**SALIENT FEATURES:-**

**WESTERN DISTURBANCE:-**

SCT TO BKN MULTILAYERED CLOUDS OVER PAK LADAKH J&K HP UTRKND PJB HARY DLH RAJ NW MP UP NEPAL TIBET ADJ CHINA IN ASSW **WD** OVER THE AREA (.)

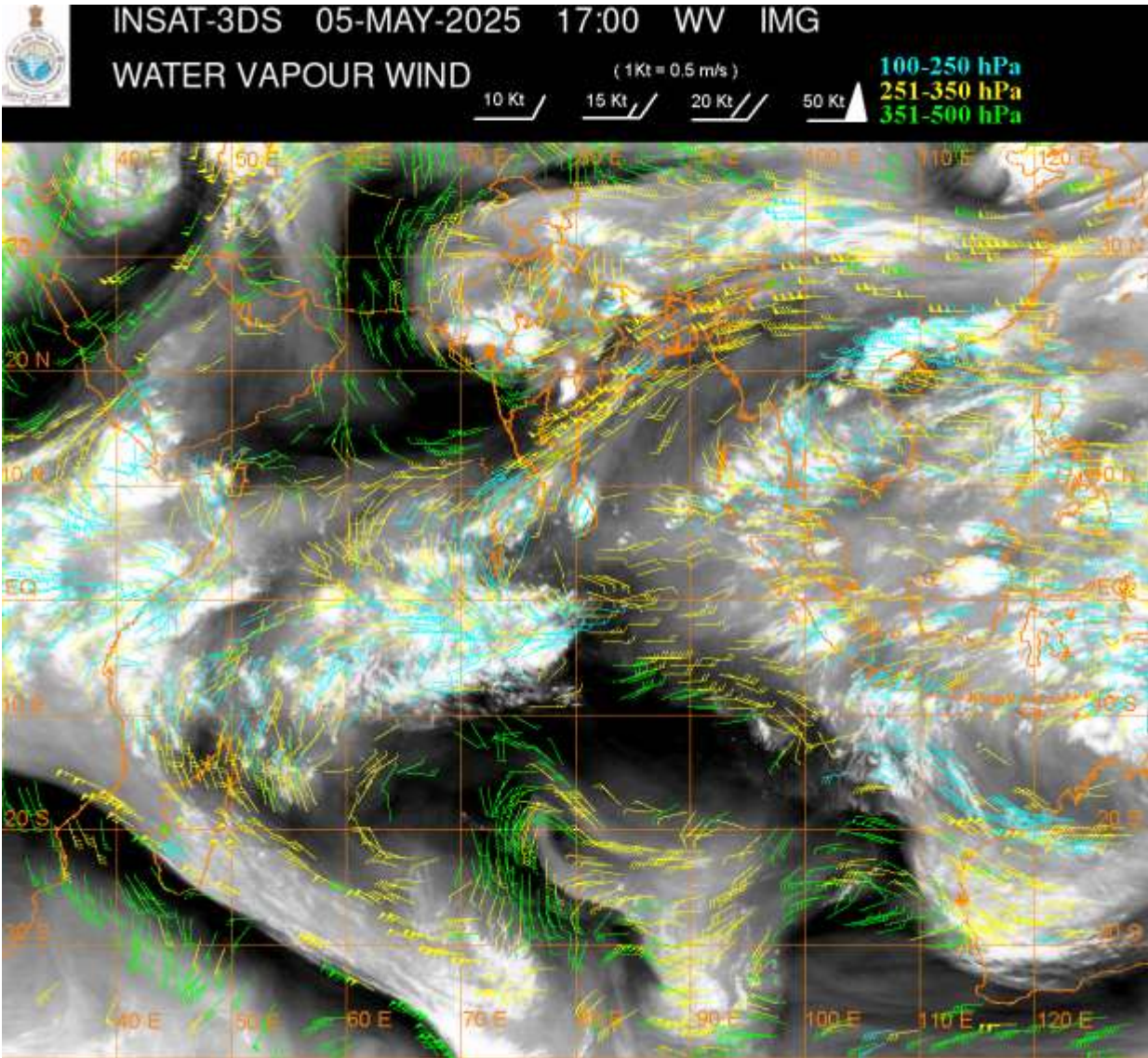
SCT MULTILAYERED CLOUDS OVER CASPIAN SEA W IRAN & N/HOOD IN ASSW **ANOTHER WD** OVER THE AREA (.)



**THUNDERSTORM / CONVECTIVE ACTIVITY:-**

**INTENSE TO V INTENSE THUNDERSTORM / CONVECTIVE ACTIVITY OBSERVED OVER TLNGN (.)**

**MODERATE INTENSE THUNDERSTORM / CONVECTIVE ACTIVITY OBSERVED OVER SE LADAKH E UP S RAJ GUJ MP E VID E MRTHWD BHR N CHTGH S KER S TN ANDAMAN & NICOBAR ILS AREA (MINIMUM CTT MINUS 40-70 DEG CEL) (.)**



**CLOUDS DESCRIPTION WITHIN INDIA:-**

**NORTH:-**

**SCT LOW/MED CLOUDS WITH EMBDD MOD TO INT CONVTN OVER SE LADAKH E UP AND WK TO MOD CONVTN OVER HP UTRKND W UP (.) SCT LOW/MED CLOUDS OVER S HARY DLH PJB(.)**

**EAST:-**

**SCT LOW/MED CLOUDS WITH EMBDD MOD TO INT CONVTN OVER BHR N CHTGH AND WK TO MOD CONVTN OVER JHRKND SKM SHWB SE ASSAM MEGHA ARUPR GWB (.)SCT LOW/MED CLOUDS OVER REST NE STATES (.)**

**WEST:-**

**SCT TO BKN LOW/MED CLOUDS WITH EMBDD MOD TO INT CONVTN OVER GUJ S RAJ W MP E VID E MRTHWD (.) SCT LOW/MED CLOUDS WITH EMBDD WK TO MOD CONVTN OVER N RAJ REST MAHA (.)**

**SOUTH:-**

**SCT LOW/MED CLOUDS WITH EMBDD INT TO V INT CONVTN OVER TLNGN (.) SCT LOW/MED CLOUDS WITH EMBDD MOD TO INT CONVTN OVER S TN S KER ANDAMAN & NICOBAR ILS AND WK TO MOD CONVTN OVER N KER N TN N COTL AP RYLSM LKSDP ILS AREA (.)**

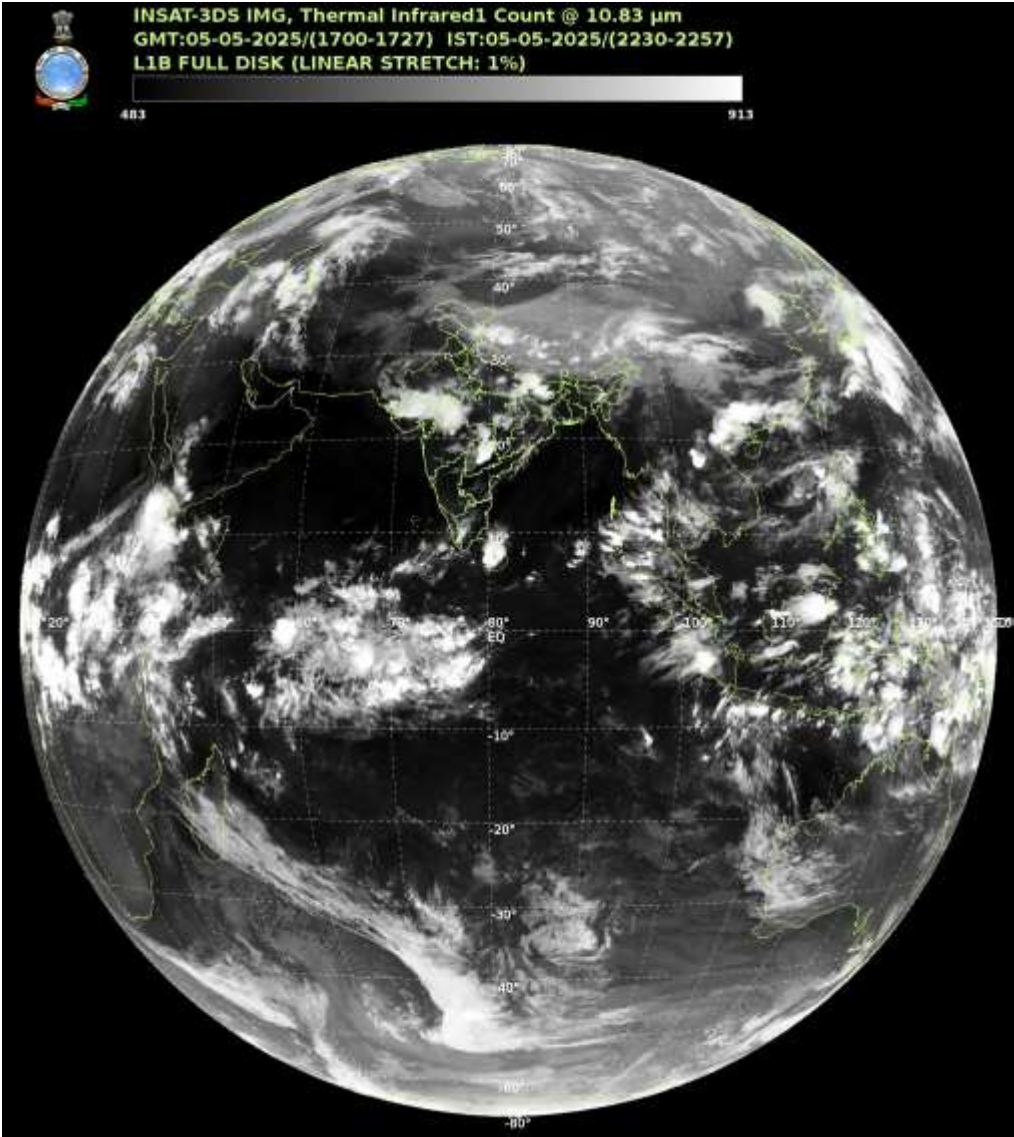
**ARABIAN SEA:-**

**SCT LOW/MED CLOUDS WITH EMBDD MOD TO INT CONVTN OVER SOUTH ARSEA COMORIN & MALDIVES AREA (.)**

**BAY OF BENGAL & ANDAMAN SEA:-**

**SCT LOW/MED CLOUDS WITH EMBDD MOD TO INT CONVTN OVER SOUTH BAY ANDAMAN SEA AND ISOL WK TO MOD CONVTN OVER CENTRAL BAY (.)**

**CLOUDS DESCRIPTION OUTSIDE INDIA:-**



**SCT LOW/MED CLOUDS WITH EMBDD MOD TO INT CONVTN OVER SRI LANKA MALDIVES PAK NEPAL BHUTAN TIBET CHINA YELLOW SEA EAST CHINA SEA THAILAND GULF OF THAILAND CAMBODIA LAOS VIETAM SUMATRA STR OF MALACCA MALAYSIA BORNEO SOUTH CHINA SEA JAVA ILS & SEA CELEBES ILS & SEA PHILIPPINES MADAGASCAR MOZAMBIQUE CHANNEL AND OVER INDIAN OCEAN BET LAT 5.0N TO 35.0S LONG 40.0E TO 120.0E (.)**

**TOO 05/2320 EF=**

**NNNN**

**LEGEND:-**

|        |       |  |
|--------|-------|--|
| REGION | NORTH | J&K HP PJB HARY DLH UP UTRKND                  |
|        | EAST  | BHR JHRKND CHTGH ORS WB SKM NORTH- EAST STATES |
|        | WEST  | RAJ MP GUJ MAHA GOA                            |

|   |                        |  |
|---|------------------------|--|
|   | <b>SOUTH</b>           | <b>TLNGN AP KRNTK KER TN LKSDP<br/>ANDAMAN &amp; NICOBAR ILS</b> |
| <b>CLOUD DISTRIBUTION</b>   | <b>ISOL</b>            | <b>ISOLATED (LESS THAN 25%)</b>                                  |
|   | <b>SCT</b>             | <b>SCATTERED (25 TO 50%)</b>                                     |
|   | <b>BKN</b>             | <b>BROKEN (51 TO 75%)</b>  |
|   | <b>SLD</b>             | <b>SOLID (GREATER THAN 75%)</b>                                  |
| <b>CLOUDS TOP<br/>TEMPERATURE</b>   | <b>CTT</b>             | <b>CLOUD TOP TEMPERATURE</b>                                     |
| <b>CONVECTION</b>   | <b>WK CONVTN</b>       | <b>WEAK CONVECTION<br/>(CTT GREATER THAN -25°C)</b>              |
|   | <b>MOD CONVTN</b>      | <b>MODERATE CONVECTION<br/>(CTT BETWEEN -25°C TO -40°C)</b>      |
|   | <b>INT CONVTN</b>      | <b>INTENSE CONVECTION<br/>(CTT BETWEEN -41°C TO -70°C)</b>       |
|   | <b>V INT CONVTN</b>    | <b>VERY INTENSE CONVECTION<br/>(CTT LESS THAN -70°C)</b>         |
| <b>METEOROLOGICAL<br/>SUB- DIVISIONS,<br/>STATES &amp; UNION<br/>TERITORIES</b> | <b>ARUPR</b>           | <b>ARUNACHAL PRADESH</b>   |
|   | <b>BHR</b>             | <b>BIHAR</b>   |
|   | <b>CHTGH</b>           | <b>CHHATTISGARH</b>  |
|   | <b>COTL AP</b>         | <b>COASTAL ANDHRA PRADESH</b>                                    |
|   | <b>COTL KRNTK</b>      | <b>COASTAL KARNATAKA</b>   |
|   | <b>COTL ORS</b>        | <b>COASTAL ORISSA</b>  |
|   | <b>GUJ</b>             | <b>GUJARAT</b>   |
|   | <b>GWB</b>             | <b>GANGETIC WEST BENGAL</b>                                      |
|   | <b>HARY</b>            | <b>HARYANA</b>   |
|   | <b>DLH</b>             | <b>DELHI</b>   |
|   | <b>HP</b>              | <b>HIMACHAL PRADESH</b>  |
|   | <b>J&amp;K</b>         | <b>JAMMU AND KASHMIR</b>   |
|   | <b>JHRKND</b>          | <b>JHARKHAND</b>   |
|   | <b>KER</b>             | <b>KERALA</b>  |
|   | <b>KKN</b>             | <b>KONKAN</b>  |
|   | <b>LKSDP</b>           | <b>LAKSHADWEEP</b>   |
|   | <b>M MAHA</b>          | <b>MADHYA MAHARASHTRA</b>  |
|   | <b>MAHA</b>            | <b>MAHARASHTRA</b>   |
|   | <b>MANI</b>            | <b>MANIPUR</b>   |
|   | <b>MEGHA</b>           | <b>MEGHALAYA</b>   |
|   | <b>MIZO</b>            | <b>MIZORAM</b>   |
|   | <b>MP</b>              | <b>MADHYA PRADESH</b>  |
|   | <b>MRTHWD</b>          | <b>MARATHWADA</b>  |
|   | <b>NAGA</b>            | <b>NAGALAND</b>  |
|   | <b>N COTL AP</b>       | <b>NORTH COASTAL ANDHRA<br/>PRADESH</b>                          |
|   | <b>NIK</b>             | <b>NORTH INTERIOR KARNATAKA</b>                                  |
|   | <b>ORS</b>             | <b>ORISSA</b>  |
|   | <b>PJB</b>             | <b>PUNJAB</b>  |
|   | <b>RAJ</b>             | <b>RAJASTHAN</b>   |
|   | <b>RYLSM</b>           | <b>RAYALASEEMA</b>   |
|   | <b>SAU &amp; KUTCH</b> | <b>SAURASHTRA &amp; KUTCH</b>                                    |
|   | <b>SHWB</b>            | <b>SUB-HIMALAYAN WEST BENGAL</b>                                 |

|                      |               |                                  |
|----------------------|---------------|----------------------------------|
|                      | <b>SIK</b>    | <b>SOUTH INTERIOR KARNATAKA</b>  |
|                      | <b>SKM</b>    | <b>SIKKIM</b>                    |
|                      | <b>TLNGN</b>  | <b>TELANGANA</b>                 |
|                      | <b>TN</b>     | <b>TAMIL NADU</b>                |
|                      | <b>TRP</b>    | <b>TRIPURA</b>                   |
|                      | <b>UP</b>     | <b>UTTAR PRADESH</b>             |
|                      | <b>UTRKND</b> | <b>UTTARAKHAND</b>               |
|                      | <b>VID</b>    | <b>VIDHARBHA</b>                 |
|                      | <b>SHWB</b>   | <b>SUB HIMALAYAN WEST BENGAL</b> |
|                      | <b>GWB</b>    | <b>GANGETIC WEST BENGAL</b>      |
|                      | <b>ARSEA</b>  | <b>ARABIAN SEA</b>               |
|                      | <b>ILS</b>    | <b>ISLANDS</b>                   |
|                      |               |                                  |
| <b>MISCELLANEOUS</b> | <b>ASSW</b>   | <b>IN ASSOCIATION WITH</b>       |
|                      | <b>ASSTD</b>  | <b>ASSOCIATED</b>                |
|                      | <b>LLC</b>    | <b>LOW LEVEL CIRCULATION</b>     |
|                      | <b>EMBDD</b>  | <b>EMBEDDED</b>                  |
|                      | <b>N/HOOD</b> | <b>NEIGHBOURHOOD</b>             |
|                      | <b>EXT</b>    | <b>EXTREME</b>                   |