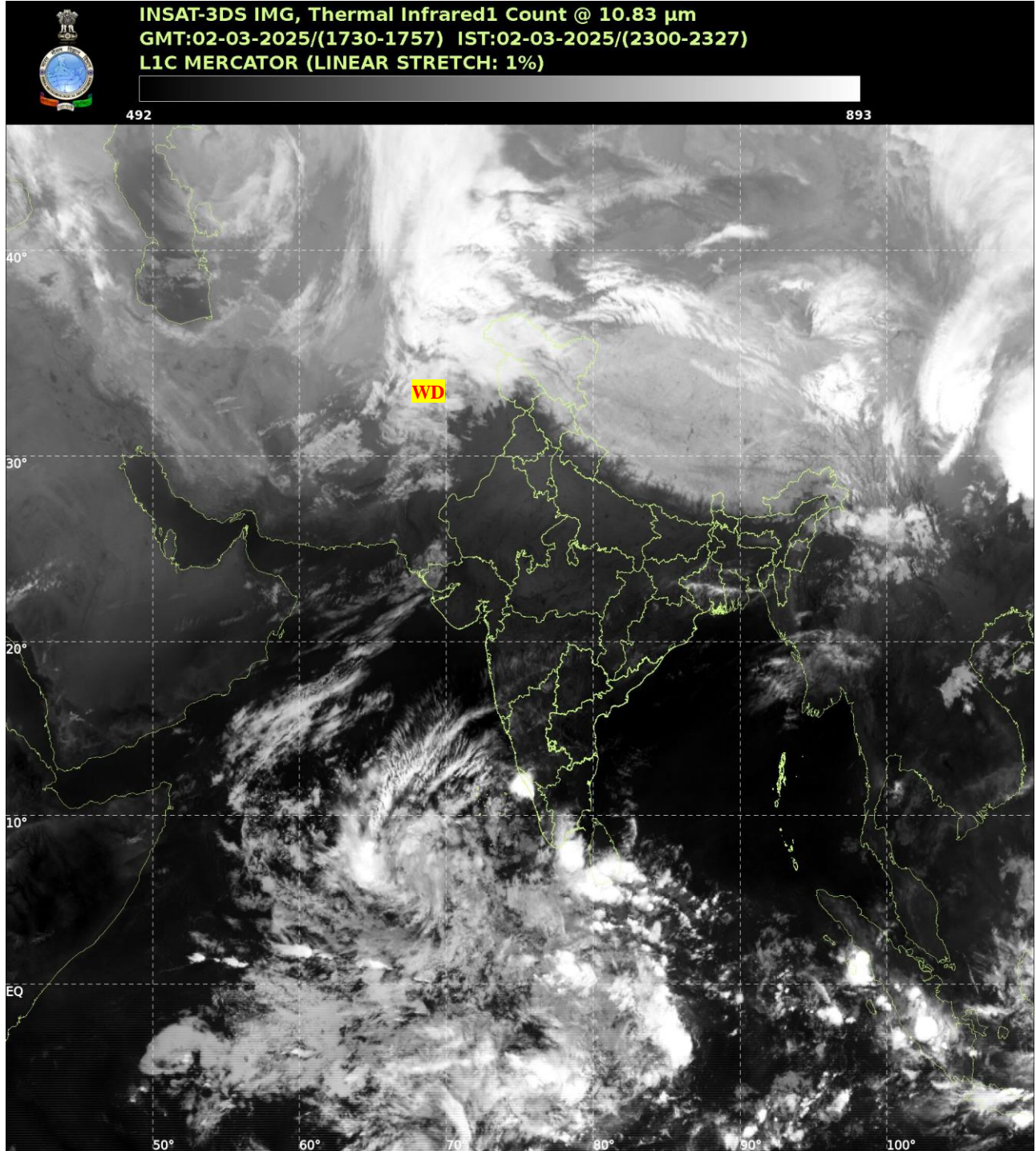




भारत मौसम विज्ञान विभाग
पृथ्वी विज्ञान मंत्रालय
India Meteorological Department
Ministry of Earth Sciences



**SATELLITE BULLETIN BASED ON SATELLITE
IMAGERIES AND PRODUCTS**
02.03.2025 TIME 1800 UTC



TCIN50 DEMS 021800

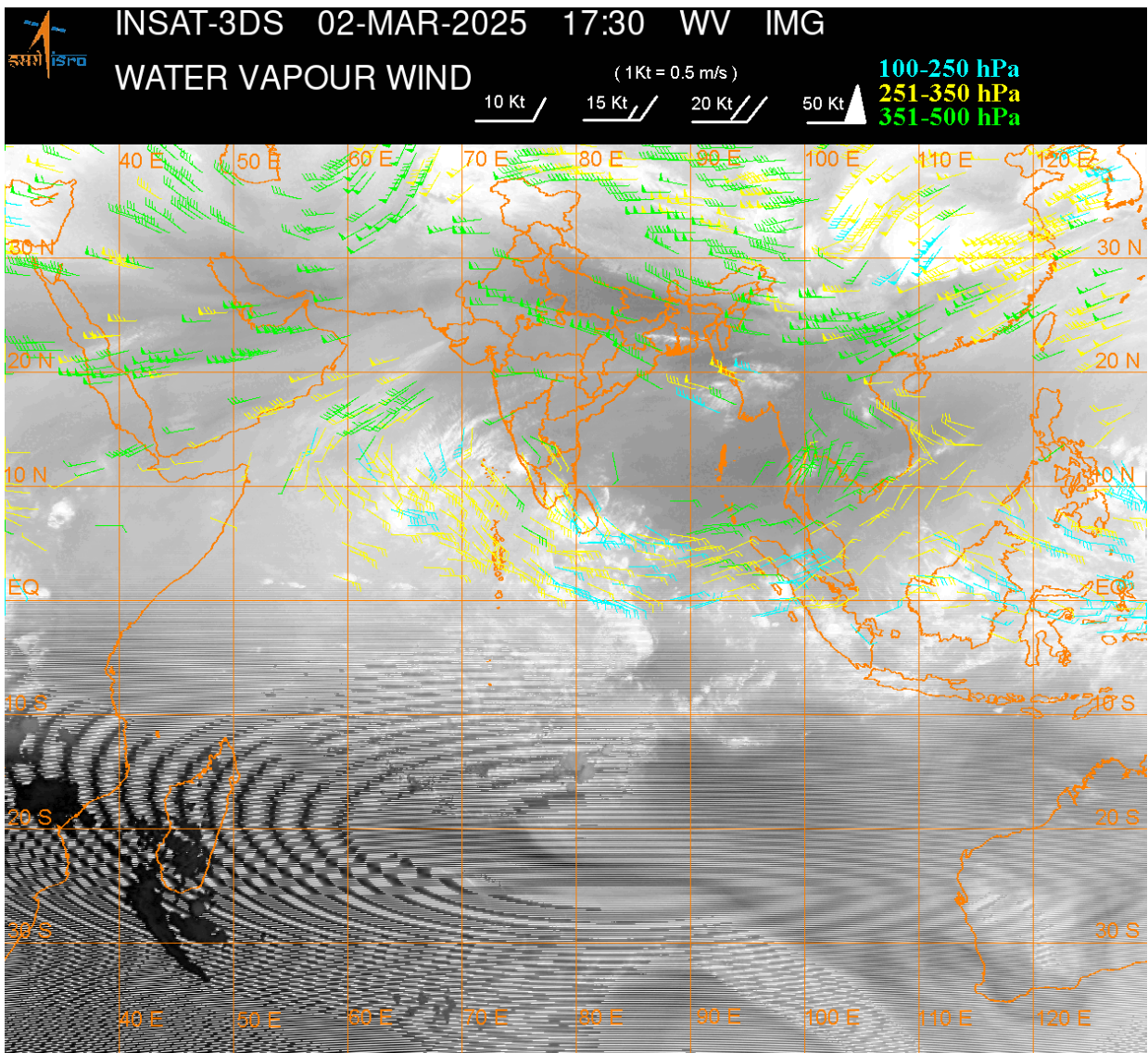
SATELLITE BULLETIN BASED ON INSAT-3DS PIC OF 021730 UTC (.)

REGION COVERED BETWEEN LAT 50.0°N TO 35.0°S AND LONG 40.0°E TO 125.0°E (.)

SALIENT FEATURES:-

WESTERN DISTURBANCE:-

SCT MULTILAYERED CLOUDS OVER IRAN AFGAN N PAK J&K LADAKH AND N/HOOD IN ASSW **ANOTHER WD** OVER THE AREA (.)



CLOUDS DESCRIPTION WITHIN INDIA:-

NORTH:-

SCT LOW/MED CLOUDS WITH EMBDD MOD TO INT CONVTN OVER LADAKH W J&K AND ISOL WK TO MOD CONVTN OVER N HP N UTRKND (.) ISOL LOW/MED CLOUDS OVER S HP S UTRKND (.)

EAST:-

SCT LOW/MED CLOUDS WITH EMBDD MOD TO INT CONVTN OVER S GWB AND WK TO MOD CONVTN OVER CHTGHS ORS SKM ASSAM ARUPR NAGA MANI (.) ISOL TO SCT LOW/MED CLOUDS OVER SHWB REST NE STATES (.)

WEST:-

SCT LOW/MED CLOUDS WITH EMBDD WK TO MOD CONVTN OVER S M MAHA MRTHWD (.) SCT LOW/MED CLOUDS OVER RAJ GUJ MP AND REST MAHA (.)

SOUTH:-

SCT LOW/MED CLOUDS WITH EMBDD INT TO V INT CONVTN OVER N KER (.) SCT LOW/MED CLOUDS WITH EMBDD MOD TO INT CONVTN OVER S KER S COTL TN LKSDP ILS AREA (.) SCT LOW/MED CLOUDS WITH EMBDD WK TO MOD CONVTN OVER KRNTK COTL AP REST TN (.) SCT LOW/MED CLOUDS OVER TLNGN ANDAMAN & NICOBAR ILS (.)

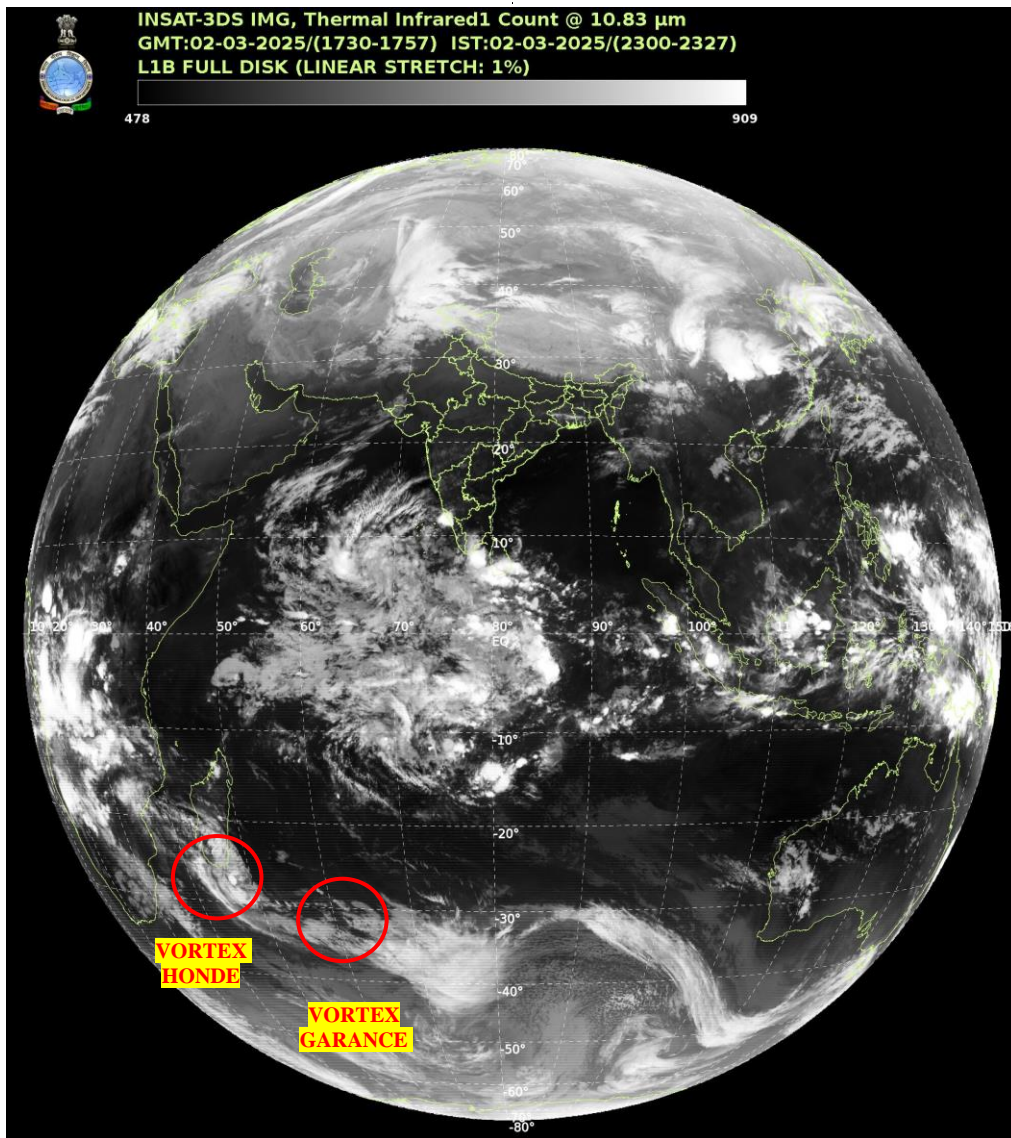
ARABIAN SEA:-

SCT LOW/MED CLOUDS WITH EMBDD INT TO V INT CONVTN OVER LKSDP ILS AREA SE ARSEA MALDIVES & COMORIN AREA ADJ EQUATORIAL INDIAN OCEAN (.) SCT LOW/MED CLOUDS WITH EMBDD WK TO MOD CONVTN OVER REST ARSEA (.)

BAY OF BENGAL & ANDAMAN SEA:-

SCT LOW/MED CLOUDS WITH EMBDD ISOL MOD TO INT CONVTN OVER SOUTH BAY AND ISOL WK TO MOD CONVTN OVER WC BAY OFF SOUTH AP COAST SOUTH ANDAMAN SEA (.)

CLOUDS DESCRIPTION OUTSIDE INDIA:-



VORTEX (GARANCE) OVER SOUTH INDIAN OCEAN:-

VORTEX (GARANCE) OVER SOUTH INDIAN OCEAN (AREA D86 ADJ D90) CENTERED NEAR 34.4S / 62.6E (.) INTENSITY T2.5/2.5 (.) MAXIMUM SUSTAINED WINDS 34-47 KTS (.) ASSTD SCT TO BKN LOW/MED CLOUDS WITH EMBDD INT TO V INT CONVTN OVER AREA BET LAT 28.0S TO 35.0S LONG 56.0E TO 70.0E (.)

VORTEX (HONDE) OVER SOUTH INDIAN OCEAN:-

VORTEX (HONDE) OVER SOUTH INDIAN OCEAN (AREA D65 ADJ D80) CENTERED NEAR 27.0S / 46.5E (.) INTENSITY T3.0/3.5 (.) MAXIMUM SUSTAINED WINDS 48-63 KTS (.) ASSTD SCT TO BKN LOW/MED CLOUDS WITH EMBDD INT TO V INT CONVTN OVER AREA BET LAT 22.0S TO 32.0S LONG 40.0E TO 50.0E & SOUTH MADAGASCAR (.)

SCT LOW/MED CLOUDS WITH EMBDD MOD TO INT CONVTN OVER SRI LANKA PALK STR GULF OF MANNAR MALDIVES TIBET CHINA YELLOW SEA EAST CHINA SEA TAIWAN NORTH MYANMAR SUMATRA STR OF MALACCA MALAYSIA BORNEO SOUTH CHINA SEA JAVA ILS & SEA CELEBES ILS & SEA PHILIPPINES SULU SEA MADAGASCAR MOZAMBIQUE CHANNEL AND OVER INDIAN OCEAN BET LAT 5.0N TO 20.0S LONG 40.0E TO 100.0E AND BET LAT 20.0S TO 35.0S LONG 40.0E TO 70.0E (.)

TOO 03/0025 EF=

NNNN

LEGEND:-

	NORTH	J&K HP PJB HARY DLH UP UTRKND
--	--------------	--

REGION	EAST	BHR JHRKND CHTGH ORS WB SKM NORTH- EAST STATES
	WEST	RAJ MP GUJ MAHA GOA
	SOUTH	TLNGN AP KRNTK KER TN LKSDP ANDAMAN & NICOBAR ILS
CLOUD DISTRIBUTION	ISOL	ISOLATED (LESS THAN 25%)
	SCT	SCATTERED (25 TO 50%)
	BKN	BROKEN (51 TO 75%)
	SLD	SOLID (GREATER THAN 75%)
CLOUDS TOP TEMPERATURE	CTT	CLOUD TOP TEMPERATURE
CONVECTION	WK CONVTN	WEAK CONVECTION (CTT GREATER THAN -25°C)
	MOD CONVTN	MODERATE CONVECTION (CTT BETWEEN -25°C TO -40°C)
	INT CONVTN	INTENSE CONVECTION (CTT BETWEEN -41°C TO -70°C)
	V INT CONVTN	VERY INTENSE CONVECTION (CTT LESS THAN -70°C)
METEOROLOGICAL SUB- DIVISIONS, STATES & UNION TERRITORIES	ARUPR	ARUNACHAL PRADESH
	BHR	BIHAR
	CHTGH	CHHATTISGARH
	COTL AP	COASTAL ANDHRA PRADESH
	COTL KRNTK	COASTAL KARNATAKA
	COTL ORS	COASTAL ORISSA
	GUJ	GUJARAT
	GWB	GANGETIC WEST BENGAL
	HARY	HARYANA
	DLH	DELHI
	HP	HIMACHAL PRADESH
	J&K	JAMMU AND KASHMIR
	JHRKND	JHARKHAND
	KER	KERALA
	KKN	KONKAN
	LKSDP	LAKSHADWEEP
	M MAHA	MADHYA MAHARASHTRA
	MAHA	MAHARASHTRA
	MANI	MANIPUR
	MEGHA	MEGHALAYA
	MIZO	MIZORAM
	MP	MADHYA PRADESH
		MRTHWD
NAGA		NAGALAND
N COTL AP		NORTH COASTAL ANDHRA PRADESH
NIK		NORTH INTERIOR KARNATAKA
ORS		ORISSA
PJB		PUNJAB
RAJ		RAJASTHAN

	RYLSM	RAYALASEEMA
	SAU & KUTCH	SAURASHTRA & KUTCH
	SHWB	SUB-HIMALAYAN WEST BENGAL
	SIK	SOUTH INTERIOR KARNATAKA
	SKM	SIKKIM
	TLNGN	TELANGANA
	TN	TAMIL NADU
	TRP	TRIPURA
	UP	UTTAR PRADESH
	UTRKND	UTTARAKHAND
	VID	VIDHARBHA
	SHWB	SUB HIMALAYAN WEST BENGAL
	GWB	GANGETIC WEST BENGAL
	ARSEA	ARABIAN SEA
	ILS	ISLANDS
MISCELLANEOUS	ASSW	IN ASSOCIATION WITH
	ASSTD	ASSOCIATED
	LLC	LOW LEVEL CIRCULATION
	EMBDD	EMBEDDED
	N/HOOD	NEIGHBOURHOOD
	EXT	EXTREME