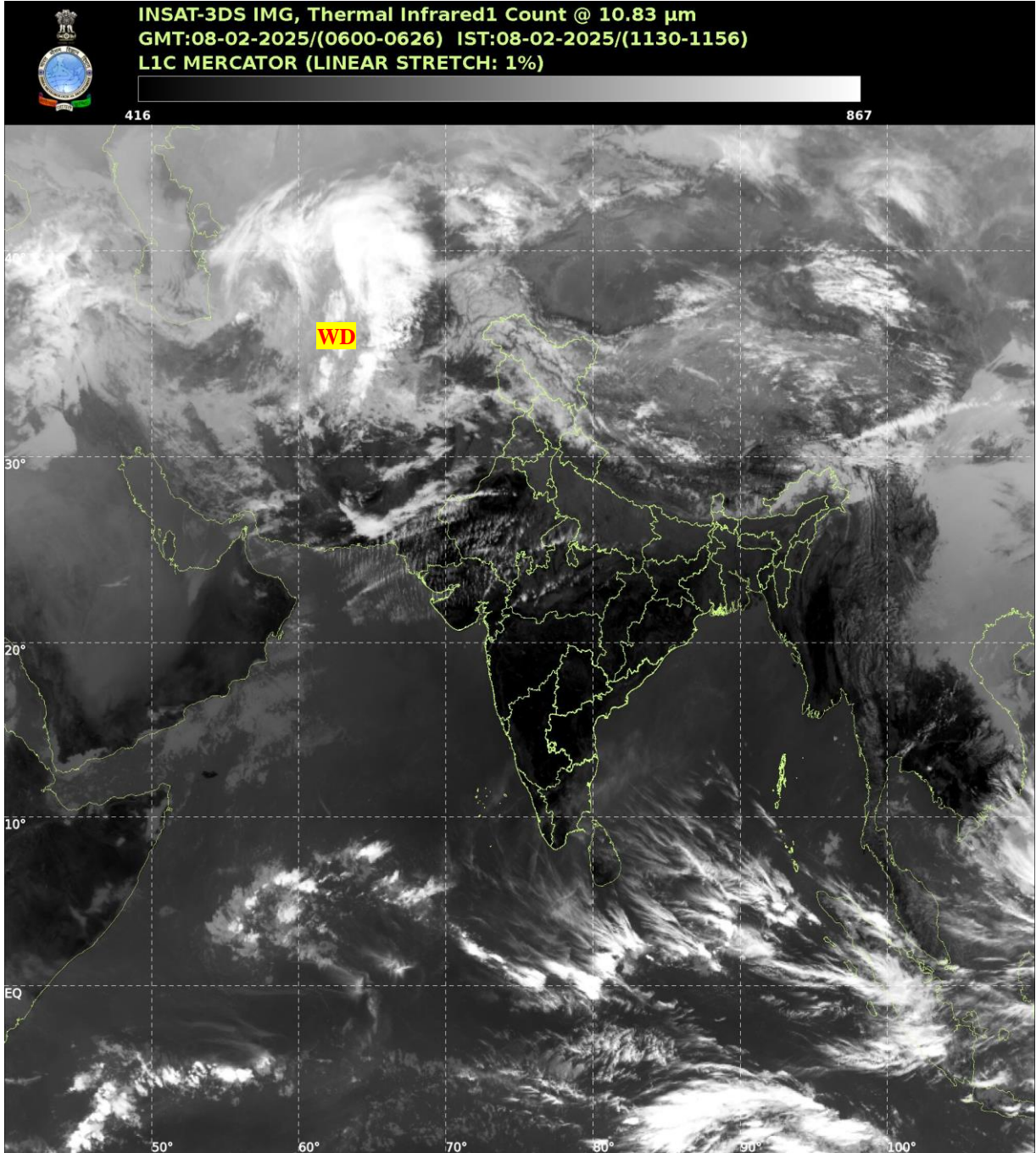




भारत मौसम विज्ञान विभाग  
पृथ्वी विज्ञान मंत्रालय  
India Meteorological Department  
Ministry of Earth Sciences



**SATELLITE BULLETIN BASED ON SATELLITE  
IMAGERIES AND PRODUCTS**  
**08.02.2025 TIME 0600 UTC**



TCIN50 DEMS 080600

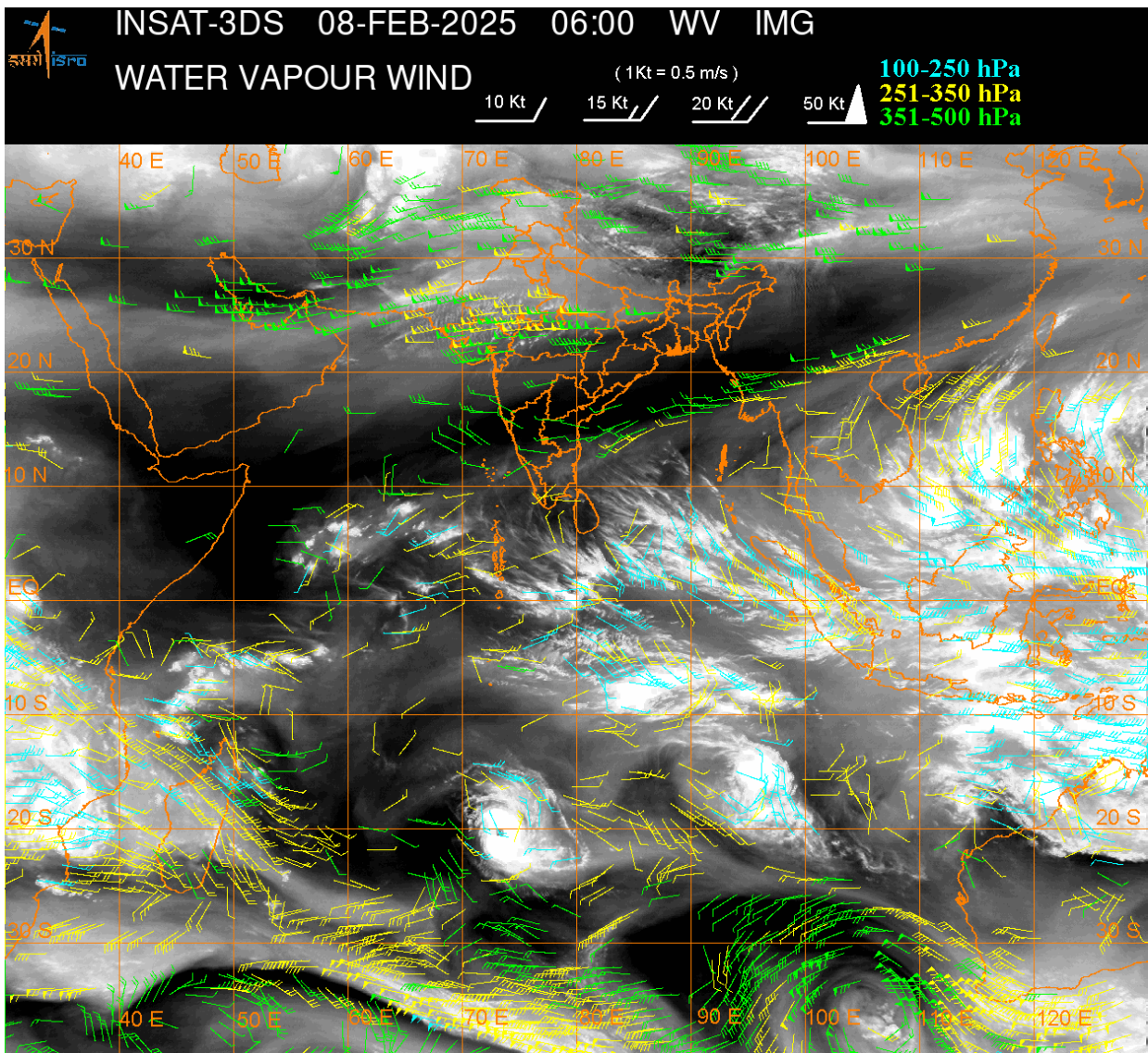
SATELLITE BULLETIN BASED ON INSAT-3DS PIC OF 080600 UTC (.)

REGION COVERED BETWEEN LAT 50.0°N TO 35.0°S AND LONG 40.0°E TO 125.0°E (.)

**SALIENT FEATURES:-**

**WESTERN DISTURBANCE:-**

SCT MULTILAYERED CLOUDS OVER CASPIAN SEA IRAN AFGAN PAK LADAKH J&K HP PJB  
HARY RAJ GUJ AND N/HOOD IN ASSW **WD** OVER THE AREA (.)



**CLOUDS DESCRIPTION WITHIN INDIA:-**

**NORTH:-**

SCT LOW/MED CLOUDS WITH EMBDD ISOL WK TO MOD CONVTN OVER LADAKH J&K HP UTRKND PJB N HARY (.) ISOL LOW/MED CLOUDS OVER SE UP (.)

**EAST:-**

SCT LOW/MED CLOUDS WITH EMBDD ISOL WK CONVTN OVER N SHWB SKM ARUPR (.) ISOL TO SCT LOW/MED CLOUDS OVER S SHWB REST NE STATES (.)

**WEST:-**

SCT LOW/MED CLOUDS WITH EMBDD ISOL WK TO MOD CONVTN OVER RAJ MP GUJ (.)

**SOUTH:-**

ISOL TO SCT LOW/MED CLOUDS OVER COTL AP KER TN LKSDP ILS AREA ANDAMAN & NICOBAR ILS (.)

**ARABIAN SEA:-**

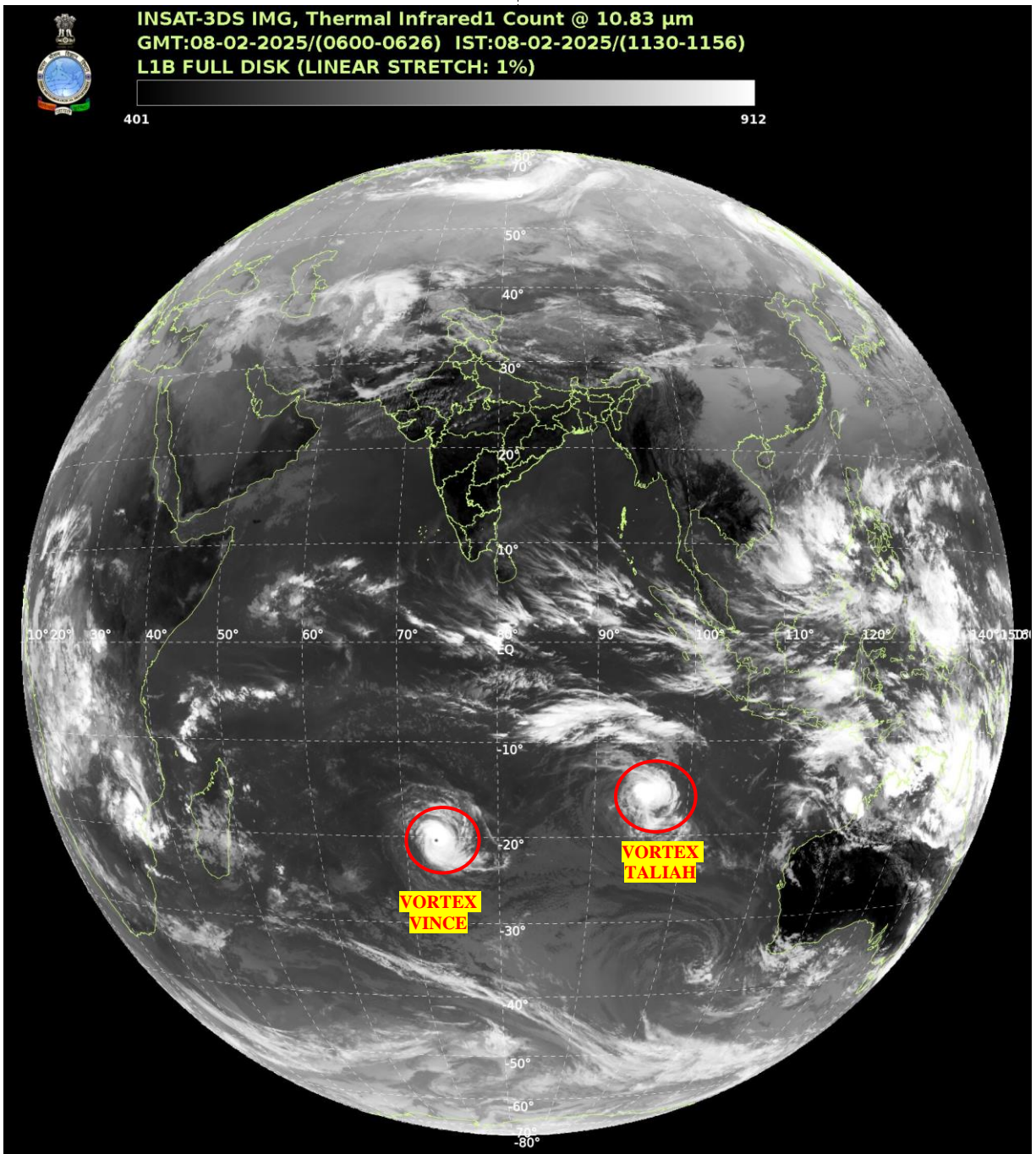
SCT LOW/MED CLOUDS WITH EMBDD MOD TO INT CONVTN OVER SOUTH ARSEA SOUTH OF LAT 8.0N AND ISOL WK TO MOD CONVTN OVER NORTH ARSEA (.) SCT LOW/MED CLOUDS OVER REST ARSEA LKSDP ILS AREA & COMORIN AREA (.)

**BAY OF BENGAL & ANDAMAN SEA:-**

SCT LOW/MED CLOUDS WITH EMBDD ISOL WK TO MOD CONVTN OVER SOUTH BAY & ANDAMAN SEA (.) SCT LOW/MED CLOUDS OVER WC BAY (.)



**CLOUDS DESCRIPTION OUTSIDE INDIA:-**



**VORTEX (VINCE) OVER SOUTH INDIAN OCEAN:-**

**VORTEX (VINCE) OVER SOUTH INDIAN OCEAN (AREA E90 ADJ E80) CENTERED NEAR 20.4S / 73.5E (.) INTENSITY T5.5/6.5 (.) MAXIMUM SUSTAINED WINDS ABOVE 120 KTS (.) ASSTD SCT TO BKN LOW/MED CLOUDS WITH EMBDD INT TO V INT CONVTN OVER AREA BET LAT 16.0S TO 23.0S LONG 72.0E TO 79.0E (.)**

**VORTEX (TALIAH) OVER SOUTH INDIAN OCEAN:-**

**VORTEX (TALIAH) OVER SOUTH INDIAN OCEAN (AREA G25) CENTERED NEAR 15.8S / 95.5E (.) INTENSITY T2.5/3.5 (.) MAXIMUM SUSTAINED WINDS 48-63 KTS (.) ASSTD SCT TO BKN LOW/MED CLOUDS WITH EMBDD INT TO V INT CONVTN OVER AREA BET LAT 10.0S TO 20.0S LONG 90.0E TO 100.0E (.)**

**SCT LOW/MED CLOUDS WITH EMBDD MOD TO INT CONVTN OVER PAK TIBET CHINA EAST CHINA SEA THAILAND CAMBODIA GULF OF THAILAND LAOS VIETNAM SUMATRA STR OF MALACCA MALAYSIA BORNEO SOUTH CHINA SEA JAVA ILS & SEA CELEBES ILS & SEA PHILIPPINES SULU SEA MADAGASCAR MOZAMBIQUE CHANNEL AND OVER INDIAN OCEAN BET LAT 5.0N TO 35.0S LONG 40.0E TO 125.0E (.)**

TOO 08/1250 EF=

NNNN

**LEGEND:-**

|  |                     |  |                   |
|--|---------------------|--|-------------------|
| <b>REGION</b>  | <b>NORTH</b>        | <b>J&amp;K HP PJB HARY DLH UP UTRKND</b>                     |                   |
|  | <b>EAST</b>         | <b>BHR JHRKND CHTGH ORS WB SKM NORTH- EAST STATES</b>        |                   |
|  | <b>WEST</b>         | <b>RAJ MP GUJ MAHA GOA</b>                                   |                   |
|  | <b>SOUTH</b>        | <b>TLNGN AP KRNTK KER TN LKSDP ANDAMAN &amp; NICOBAR ILS</b> |                   |
| <b>CLOUD DISTRIBUTION</b>  | <b>ISOL</b>         | <b>ISOLATED (LESS THAN 25%)</b>                              |                   |
|  | <b>SCT</b>          | <b>SCATTERED (25 TO 50%)</b>                                 |                   |
|  | <b>BKN</b>          | <b>BROKEN (51 TO 75%)</b>                                    |                   |
|  | <b>SLD</b>          | <b>SOLID (GREATER THAN 75%)</b>                              |                   |
| <b>CLOUDS TOP TEMPERATURE</b>  | <b>CTT</b>          | <b>CLOUD TOP TEMPERATURE</b>                                 |                   |
| <b>CONVECTION</b>  | <b>WK CONVTN</b>    | <b>WEAK CONVECTION (CTT GREATER THAN -25°C)</b>              |                   |
|  | <b>MOD CONVTN</b>   | <b>MODERATE CONVECTION (CTT BETWEEN -25°C TO -40°C)</b>      |                   |
|  | <b>INT CONVTN</b>   | <b>INTENSE CONVECTION (CTT BETWEEN -41°C TO -70°C)</b>       |                   |
|  | <b>V INT CONVTN</b> | <b>VERY INTENSE CONVECTION (CTT LESS THAN -70°C)</b>         |                   |
| <b>METEOROLOGICAL SUB- DIVISIONS, STATES &amp; UNION TERRITORIES</b> | <b>ARUPR</b>        | <b>ARUNACHAL PRADESH</b>                                     |                   |
|  | <b>BHR</b>          | <b>BIHAR</b>   |                   |
|  | <b>CHTGH</b>        | <b>CHHATTISGARH</b>  |                   |
|  | <b>COTL AP</b>      | <b>COASTAL ANDHRA PRADESH</b>                                |                   |
|  | <b>COTL KRNTK</b>   | <b>COASTAL KARNATAKA</b>                                     |                   |
|  | <b>COTL ORS</b>     | <b>COASTAL ORISSA</b>  |                   |
|  | <b>GUJ</b>          | <b>GUJARAT</b>   |                   |
|  | <b>GWB</b>          | <b>GANGETIC WEST BENGAL</b>                                  |                   |
|  | <b>HARY</b>         | <b>HARYANA</b>   |                   |
|  | <b>DLH</b>          | <b>DELHI</b>   |                   |
|  | <b>HP</b>           | <b>HIMACHAL PRADESH</b>                                      |                   |
|  | <b>J&amp;K</b>      | <b>JAMMU AND KASHMIR</b>                                     |                   |
|  | <b>JHRKND</b>       | <b>JHARKHAND</b>   |                   |
|  | <b>KER</b>          | <b>KERALA</b>  |                   |
|  | <b>KKN</b>          | <b>KONKAN</b>  |                   |
|  | <b>LKSDP</b>        | <b>LAKSHADWEEP</b>   |                   |
|  | <b>M MAHA</b>       | <b>MADHYA MAHARASHTRA</b>                                    |                   |
|  | <b>MAHA</b>         | <b>MAHARASHTRA</b>   |                   |
|  | <b>MANI</b>         | <b>MANIPUR</b>   |                   |
|  | <b>MEGHA</b>        | <b>MEGHALAYA</b>   |                   |
|  | <b>MIZO</b>         | <b>MIZORAM</b>   |                   |
|  | <b>MP</b>           | <b>MADHYA PRADESH</b>  |                   |
|  |                     | <b>MRTHWD</b>  | <b>MARATHWADA</b> |
|  |                     | <b>NAGA</b>  | <b>NAGALAND</b>   |
| <b>N COTL AP</b>   |                     | <b>NORTH COASTAL ANDHRA PRADESH</b>                          |                   |

|                      |                        |                                  |
|----------------------|------------------------|----------------------------------|
|                      | <b>NIK</b>             | <b>NORTH INTERIOR KARNATAKA</b>  |
|                      | <b>ORS</b>             | <b>ORISSA</b>                    |
|                      | <b>PJB</b>             | <b>PUNJAB</b>                    |
|                      | <b>RAJ</b>             | <b>RAJASTHAN</b>                 |
|                      | <b>RYLSM</b>           | <b>RAYALASEEMA</b>               |
|                      | <b>SAU &amp; KUTCH</b> | <b>SAURASHTRA &amp; KUTCH</b>    |
|                      | <b>SHWB</b>            | <b>SUB-HIMALAYAN WEST BENGAL</b> |
|                      | <b>SIK</b>             | <b>SOUTH INTERIOR KARNATAKA</b>  |
|                      | <b>SKM</b>             | <b>SIKKIM</b>                    |
|                      | <b>TLNGN</b>           | <b>TELANGANA</b>                 |
|                      | <b>TN</b>              | <b>TAMIL NADU</b>                |
|                      | <b>TRP</b>             | <b>TRIPURA</b>                   |
|                      | <b>UP</b>              | <b>UTTAR PRADESH</b>             |
|                      | <b>UTRKND</b>          | <b>UTTARAKHAND</b>               |
|                      | <b>VID</b>             | <b>VIDHARBHA</b>                 |
|                      | <b>SHWB</b>            | <b>SUB HIMALAYAN WEST BENGAL</b> |
|                      | <b>GWB</b>             | <b>GANGETIC WEST BENGAL</b>      |
|                      | <b>ARSEA</b>           | <b>ARABIAN SEA</b>               |
|                      | <b>ILS</b>             | <b>ISLANDS</b>                   |
| <b>MISCELLANEOUS</b> | <b>ASSW</b>            | <b>IN ASSOCIATION WITH</b>       |
|                      | <b>ASSTD</b>           | <b>ASSOCIATED</b>                |
|                      | <b>LLC</b>             | <b>LOW LEVEL CIRCULATION</b>     |
|                      | <b>EMBDD</b>           | <b>EMBEDDED</b>                  |
|                      | <b>N/HOOD</b>          | <b>NEIGHBOURHOOD</b>             |
|                      | <b>EXT</b>             | <b>EXTREME</b>                   |