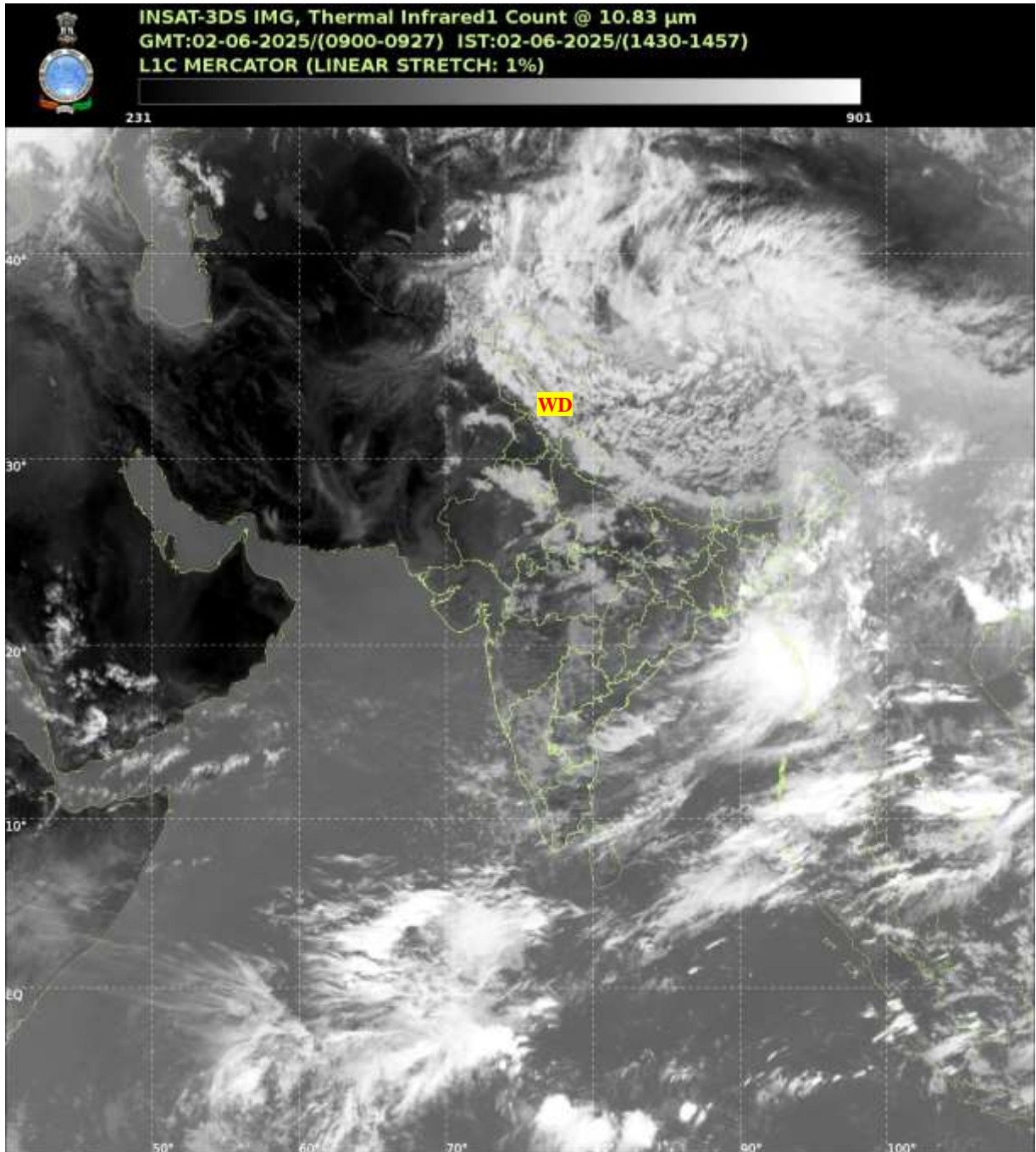




भारत मौसम विज्ञान विभाग  
पृथ्वी विज्ञान मंत्रालय  
India Meteorological Department  
Ministry of Earth Sciences



**SATELLITE BULLETIN BASED ON SATELLITE  
IMAGERIES AND PRODUCTS**  
**02.06.2025 TIME 0900 UTC**



TCIN50 DEMS 020900

SATELLITE BULLETIN BASED ON INSAT-3DS PIC OF 020900 UTC (.)

REGION COVERED BETWEEN LAT 50.0°N TO 35.0°S AND LONG 40.0°E TO 125.0°E (.)

**SALIENT FEATURES:-**

**WESTERN DISTURBANCE:-**

SCT MULTILAYERED CLOUDS OVER LADAKH J&K HP UTRKND NEPAL TIBET ADJ CHINA IN ASSW **WD** OVER THE AREA (.)

**THUNDERSTORM / CONVECTIVE ACTIVITY:-**

MODERATE TO INTENSE THUNDERSTORM / CONVECTIVE ACTIVITY OBSERVED OVER LADAKH J&K HP UTRKND N RAJ S HARY UP MP RYLSM NORTH-EAST STATES ANDAMAN & NICOBAR ILS (MINIMUM **CTT MINUS 50-70 DEG CEL**) (.)





INSAT-3DS 02-JUN-2025 09:00 WV IMG

WATER VAPOUR WIND

( 1Kt = 0.5 m/s )

10 Kt

15 Kt

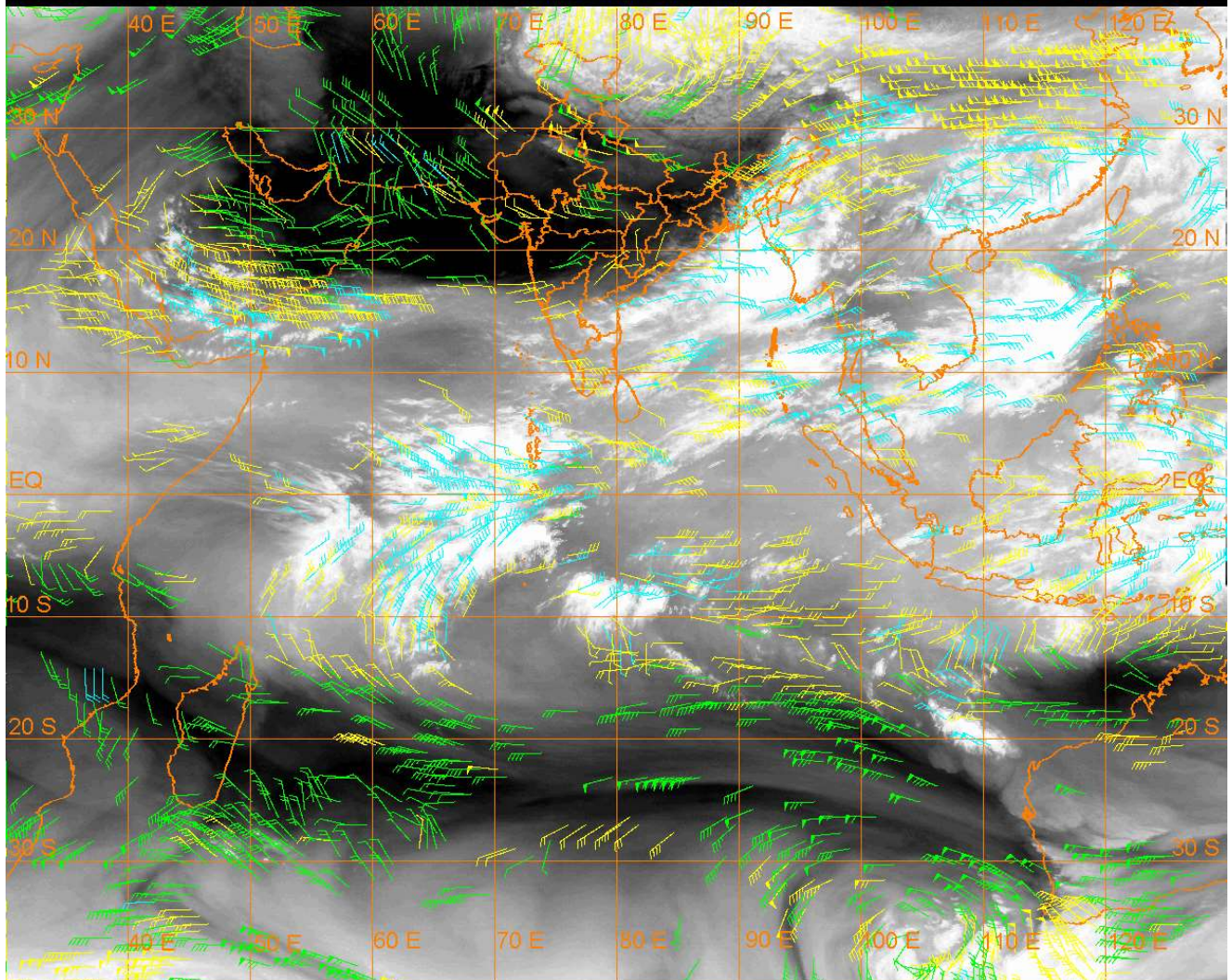
20 Kt

50 Kt

100-250 hPa

251-350 hPa

351-500 hPa



#### CLOUDS DESCRIPTION WITHIN INDIA:-

##### NORTH:-

SCT LOW/MED CLOUDS WITH EMBDD MOD TO INT CONVTN OVER LADAKH J&K HP UTRKND S HARY UP AND WK TO MOD CONVTN OVER PJB DLH (.)

##### EAST:-

SCT TO BKN LOW/MED CLOUDS WITH EMBDD MOD TO INT CONVTN OVER NE STATES & BD (.) SCT LOW/MED CLOUDS WITH EMBDD WK TO MOD CONVTN OVER BHR JHRKND CHTGH ORS GWB SHWB SKM (.)

##### WEST:-

SCT LOW/MED CLOUDS WITH EMBDD MOD TO INT CONVTN OVER N RAJ AND WK TO MOD CONVTN OVER MP REST RAJ GUJ MAHA & GOA (.)

##### SOUTH:-

SCT LOW/MED CLOUDS WITH EMBDD MOD TO INT CONVTN OVER RYLSM ANDAMAN & NICOBAR ILS (.) SCT LOW/MED CLOUDS WITH EMBDD WK TO MOD CONVTN OVER TLNGN COTL AP KRNTK KER TN & LKSDP ILS (.)

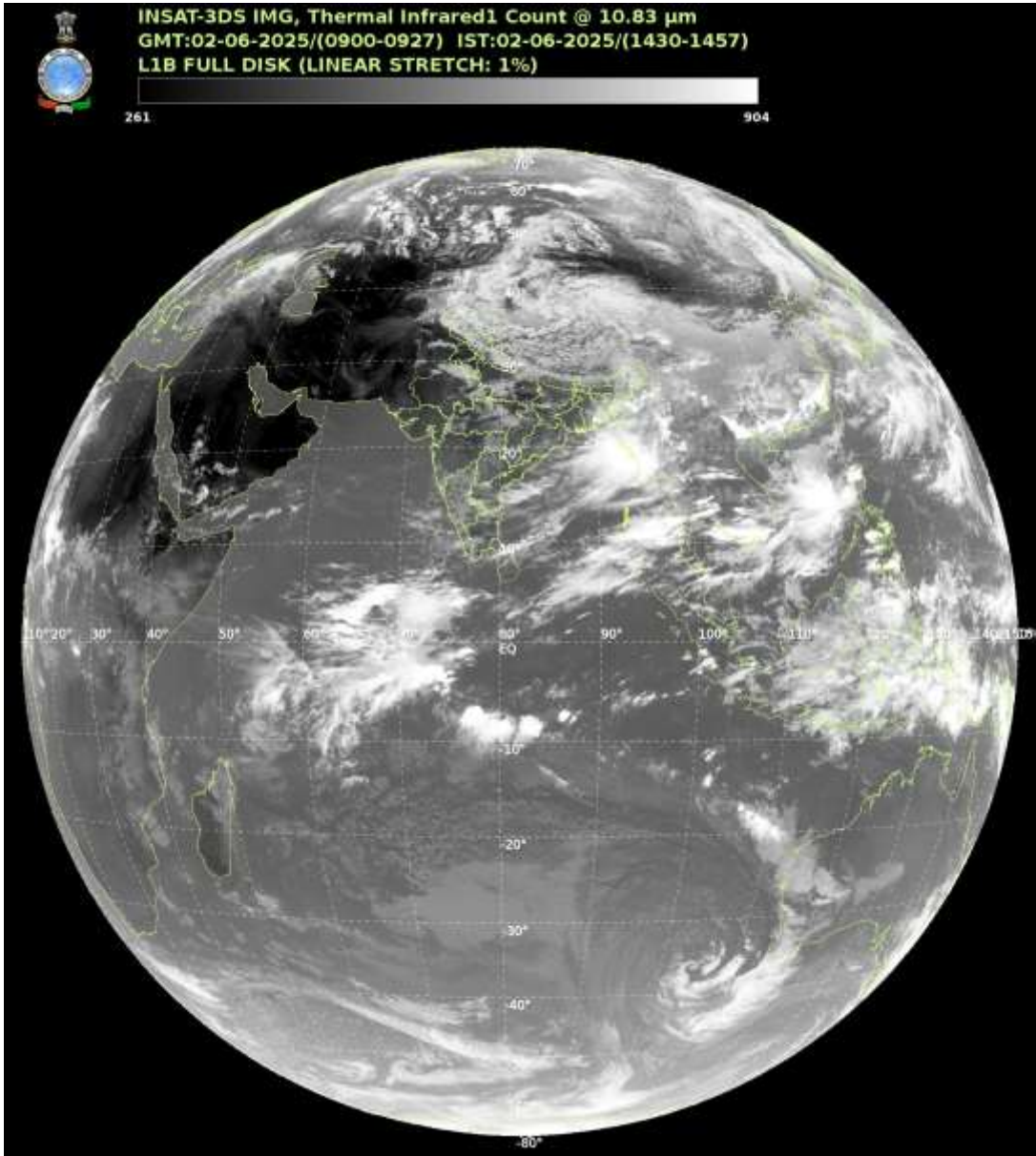
##### ARABIAN SEA:-

SCT LOW/MED CLOUDS WITH EMBDD MOD TO INT CONVTN OVER MALDIVES & COMORIN AREA AND ISOL WK TO MOD CONVTN OVER CENTRAL & SOUTH ARSEA LKSDP ILS AREA (.)

##### BAY OF BENGAL & ANDAMAN SEA:-

SCT TO BKN LOW/MED CLOUDS WITH EMBDD INT TO V INT CONVTN OVER NE ADJ EC BAY & ARAKAN COASTS (.) SCT LOW/MED CLOUDS WITH EMBDD MOD TO INT CONVTN OVER REST BAY ANDAMAN SEA GULF OF MARTABAN & TENASSERIM COAST (.)

**CLOUDS DESCRIPTION OUTSIDE INDIA:-**



SCT LOW/MED CLOUDS WITH EMBDD MOD TO INT CONVTN OVER MALDIVES NEPAL BHUTAN TIBET CHINA YELLOW SEA EAST CHINA SEA TAIWAN MYANMAR THAILAND GULF OF THAILAND CAMBODIA LAOS VIETNAM SUMATRA STR OF MALACCA MALAYSIA BORNEO SOUTH CHINA SEA JAVA ILS & SEA CELEBES ILS & SEA AND OVER INDIAN OCEAN BET LAT 5.0N TO 20.0S LONG 50.0E TO 110.0E (.)

TOO 02/1530 EF=

NNNN

**LEGEND:-**

|                    |       |   |
|--------------------|-------|---|
| REGION             | NORTH | J&K HP PJB HARY DLH UP UTRKND                     |
|                    | EAST  | BHR JHRKND CHTGH ORS WB SKM NORTH- EAST STATES    |
|                    | WEST  | RAJ MP GUJ MAHA GOA                               |
|                    | SOUTH | TLNGN AP KRNTK KER TN LKSDP ANDAMAN & NICOBAR ILS |
| CLOUD DISTRIBUTION | ISOL  | ISOLATED (LESS THAN 25%)                          |
|                    | SCT   | SCATTERED (25 TO 50%)                             |
|                    | BKN   | BROKEN (51 TO 75%)                                |
|                    | SLD   | SOLID (GREATER THAN 75%)                          |



|  |                        |   |
|--|------------------------|---|
| <b>CLOUDS TOP TEMPERATURE</b>  | <b>CTT</b>             | <b>CLOUD TOP TEMPERATURE</b>                                      |
| <b>CONVECTION</b>  | <b>WK CONVTN</b>       | <b>WEAK CONVECTION</b><br><b>(CTT GREATER THAN –25°C)</b>         |
|  | <b>MOD CONVTN</b>      | <b>MODERATE CONVECTION</b><br><b>(CTT BETWEEN -25°C TO -40°C)</b> |
|  | <b>INT CONVTN</b>      | <b>INTENSE CONVECTION</b><br><b>(CTT BETWEEN -41°C TO -70°C)</b>  |
|  | <b>V INT CONVTN</b>    | <b>VERY INTENSE CONVECTION</b><br><b>(CTT LESS THAN -70°C)</b>    |
| <b>METEOROLOGICAL SUB- DIVISIONS, STATES &amp; UNION TERRITORIES</b> | <b>ARUPR</b>           | <b>ARUNACHAL PRADESH</b>  |
|  | <b>BHR</b>             | <b>BIHAR</b>  |
|  | <b>CHTGH</b>           | <b>CHHATTISGARH</b>   |
|  | <b>COTL AP</b>         | <b>COASTAL ANDHRA PRADESH</b>                                     |
|  | <b>COTL KRNTK</b>      | <b>COASTAL KARNATAKA</b>  |
|  | <b>COTL ORS</b>        | <b>COASTAL ORISSA</b>   |
|  | <b>GUJ</b>             | <b>GUJARAT</b>  |
|  | <b>GWB</b>             | <b>GANGETIC WEST BENGAL</b>                                       |
|  | <b>HARY</b>            | <b>HARYANA</b>  |
|  | <b>DLH</b>             | <b>DELHI</b>  |
|  | <b>HP</b>              | <b>HIMACHAL PRADESH</b>   |
|  | <b>J&amp;K</b>         | <b>JAMMU AND KASHMIR</b>  |
|  | <b>JHRKND</b>          | <b>JHARKHAND</b>  |
|  | <b>KER</b>             | <b>KERALA</b>   |
|  | <b>KKN</b>             | <b>KONKAN</b>   |
|  | <b>LKSDP</b>           | <b>LAKSHADWEEP</b>  |
|  | <b>M MAHA</b>          | <b>MADHYA MAHARASHTRA</b>   |
|  | <b>MAHA</b>            | <b>MAHARASHTRA</b>  |
|  | <b>MANI</b>            | <b>MANIPUR</b>  |
|  | <b>MEGHA</b>           | <b>MEGHALAYA</b>  |
|  | <b>MIZO</b>            | <b>MIZORAM</b>  |
|  | <b>MP</b>              | <b>MADHYA PRADESH</b>   |
|  | <b>MRTHWD</b>          | <b>MARATHWADA</b>   |
|  | <b>NAGA</b>            | <b>NAGALAND</b>   |
|  | <b>N COTL AP</b>       | <b>NORTH COASTAL ANDHRA PRADESH</b>                               |
|  | <b>NIK</b>             | <b>NORTH INTERIOR KARNATAKA</b>                                   |
|  | <b>ORS</b>             | <b>ORISSA</b>   |
|  | <b>PJB</b>             | <b>PUNJAB</b>   |
|  | <b>RAJ</b>             | <b>RAJASTHAN</b>  |
|  | <b>RYLSM</b>           | <b>RAYALASEEMA</b>  |
|  | <b>SAU &amp; KUTCH</b> | <b>SAURASHTRA &amp; KUTCH</b>                                     |
|  | <b>SHWB</b>            | <b>SUB-HIMALAYAN WEST BENGAL</b>                                  |
|  | <b>SIK</b>             | <b>SOUTH INTERIOR KARNATAKA</b>                                   |
|  | <b>SKM</b>             | <b>SIKKIM</b>   |
|  | <b>TLNGN</b>           | <b>TELANGANA</b>  |
|  | <b>TN</b>              | <b>TAMIL NADU</b>   |
|  | <b>TRP</b>             | <b>TRIPURA</b>  |
|  | <b>UP</b>              | <b>UTTAR PRADESH</b>  |

|                      |               |                                  |
|----------------------|---------------|----------------------------------|
|                      | <b>UTRKND</b> | <b>UTTARAKHAND</b>               |
|                      | <b>VID</b>    | <b>VIDHARBHA</b>                 |
|                      | <b>SHWB</b>   | <b>SUB HIMALAYAN WEST BENGAL</b> |
|                      | <b>GWB</b>    | <b>GANGETIC WEST BENGAL</b>      |
|                      | <b>ARSEA</b>  | <b>ARABIAN SEA</b>               |
|                      | <b>ILS</b>    | <b>ISLANDS</b>                   |
| <b>MISCELLANEOUS</b> | <b>ASSW</b>   | <b>IN ASSOCIATION WITH</b>       |
|                      | <b>ASSTD</b>  | <b>ASSOCIATED</b>                |
|                      | <b>LLC</b>    | <b>LOW LEVEL CIRCULATION</b>     |
|                      | <b>EMBDD</b>  | <b>EMBEDDED</b>                  |
|                      | <b>N/HOOD</b> | <b>NEIGHBOURHOOD</b>             |
|                      | <b>EXT</b>    | <b>EXTREME</b>                   |