



**REGIONAL SPECIALISED METEOROLOGICAL CENTRE -TROPICAL CYCLONES, NEW DELHI
TROPICAL WEATHER OUTLOOK**

DEMS-RSMC TROPICAL CYCLONES NEW DELHI DATED 10.07.2026

TROPICAL WEATHER OUTLOOK FOR THE NORTH INDIAN OCEAN (THE BAY OF BENGAL AND THE ARABIAN SEA) VALID FOR THE NEXT 168 HOURS ISSUED AT 0600 UTC OF 10.07.2026 BASED ON 0300 UTC OF 10.07.2026.

BAY OF BENGAL:

Yesterday's Well-Marked Low Pressure area over southwest Uttar Pradesh & neighbourhood weakened into a Low Pressure Area over northern parts of central Uttar Pradesh at 0000 UTC of 10th July and persisted over the same region at 0300 UTC of today, the 10th July 2026. The associated cyclonic circulation extended upto 9.5 km above mean sea levels. It is very likely to weaken gradually during next 24 hours.

Scattered low to medium clouds with embedded intense to very intense convection lay over west and northeast Bay of Bengal, Arakan Coast. Scattered low to medium clouds with embedded moderate to intense convection lay over rest Bay of Bengal, Gulf of Martaban and Andaman Sea.

***PROBABILITY OF CYCLOGENESIS (FORMATION OF DEPRESSION) DURING NEXT 168 HRS)**

24 HOURS	24-48 HOURS	48-72 HOURS	72-96 HOURS	96-120 HOURS	120-144 HOURS	144-168 HOURS
NIL	NIL	NIL	NIL	NIL	NIL	NIL

***NOTE: EVERY 24HR FORECAST IS VALID UPTO 0300 UTC (0830 IST) OF NEXT DAY**

ARABIAN SEA:

Scattered low to medium clouds with embedded moderate to intense convection lay over Comorian area and Lakshadweep Islands area. Gulf of Cambay. Scattered low to medium clouds with embedded isolated weak to moderate convection lay over Arabian Sea.

***PROBABILITY OF CYCLOGENESIS (FORMATION OF DEPRESSION) DURING NEXT 168 HRS:**

24 HOURS	24-48 HOURS	48-72 HOURS	72-96 HOURS	96-120 HOURS	120-144 HOURS	144-168 HOURS
NIL	NIL	NIL	NIL	NIL	NIL	NIL

***NOTE: EVERY 24HR FORECAST IS VALID UPTO 0300 UTC (0830 IST) OF NEXT DAY**

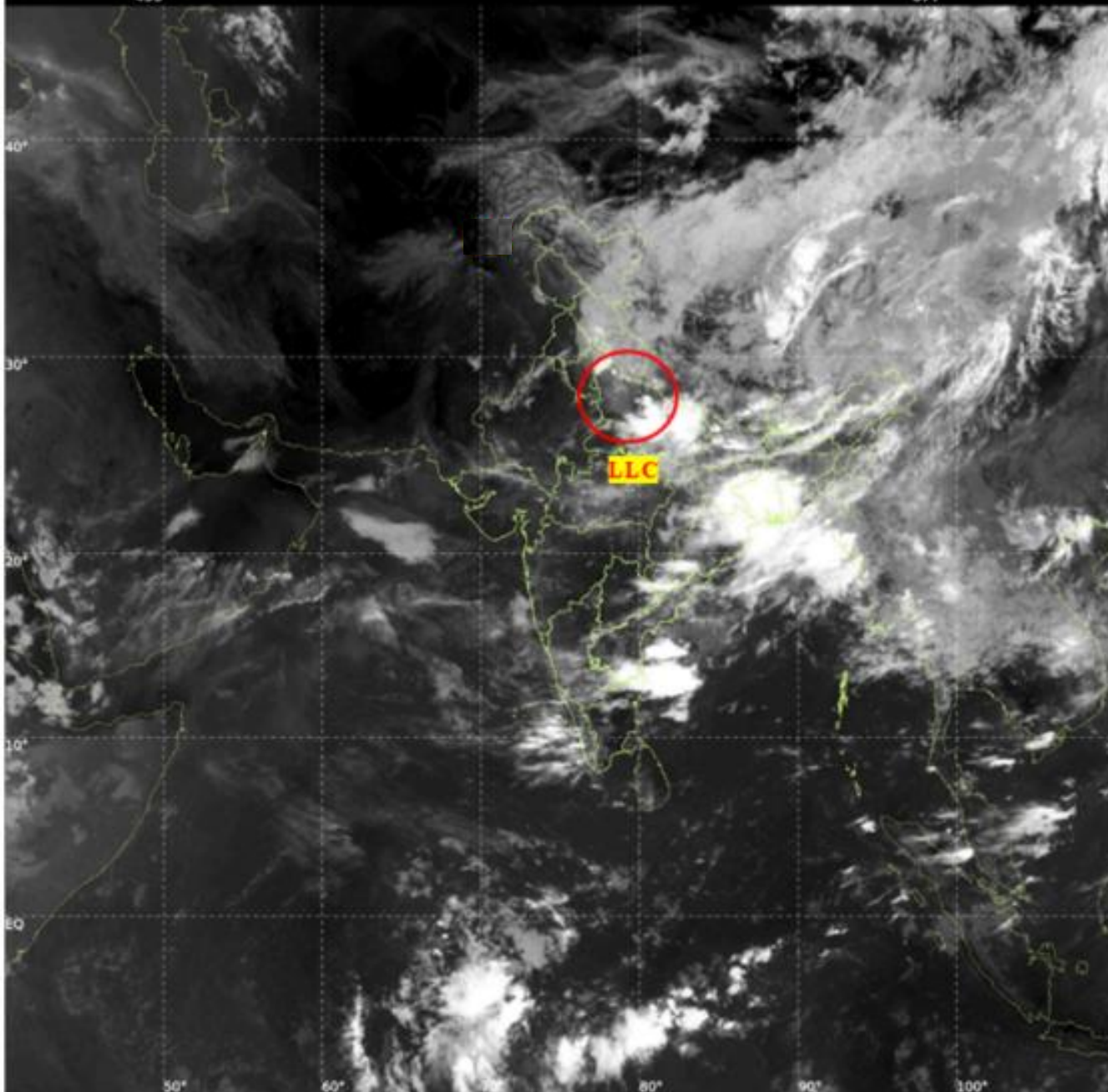
REMARKS: NIL



INSAT-3DS IMG, Thermal Infrared1 Count @ 10.83 μm
GMT:10-07-2026/(0230-0257) IST:10-07-2026/(0800-0827)
L1C MERCATOR (LINEAR STRETCH: 1%)

455

877



Cloud distribution: (a) Isolated: <25%, Scattered:25-50%, Broken: 51-75%, Solid:>75%, Convection Intensity: (a) Weak: Cloud Top Temperature(CTT)>-25°C, (b) Moderate: CTT:-25°Cto-40°C, (c) Intense: CTT: -41°Cto -70°C and (d) Very Intense::Less than -70°C Probability of cyclogenesis (formation of depression) :NIL:0%, LOW:1-33%, MODERATE:34-66% and HIGH:67-100%

This is a guidance Bulletin for WMO/ESCAP Panel Member countries. Visit respective National websites for Country specific Bulletins.