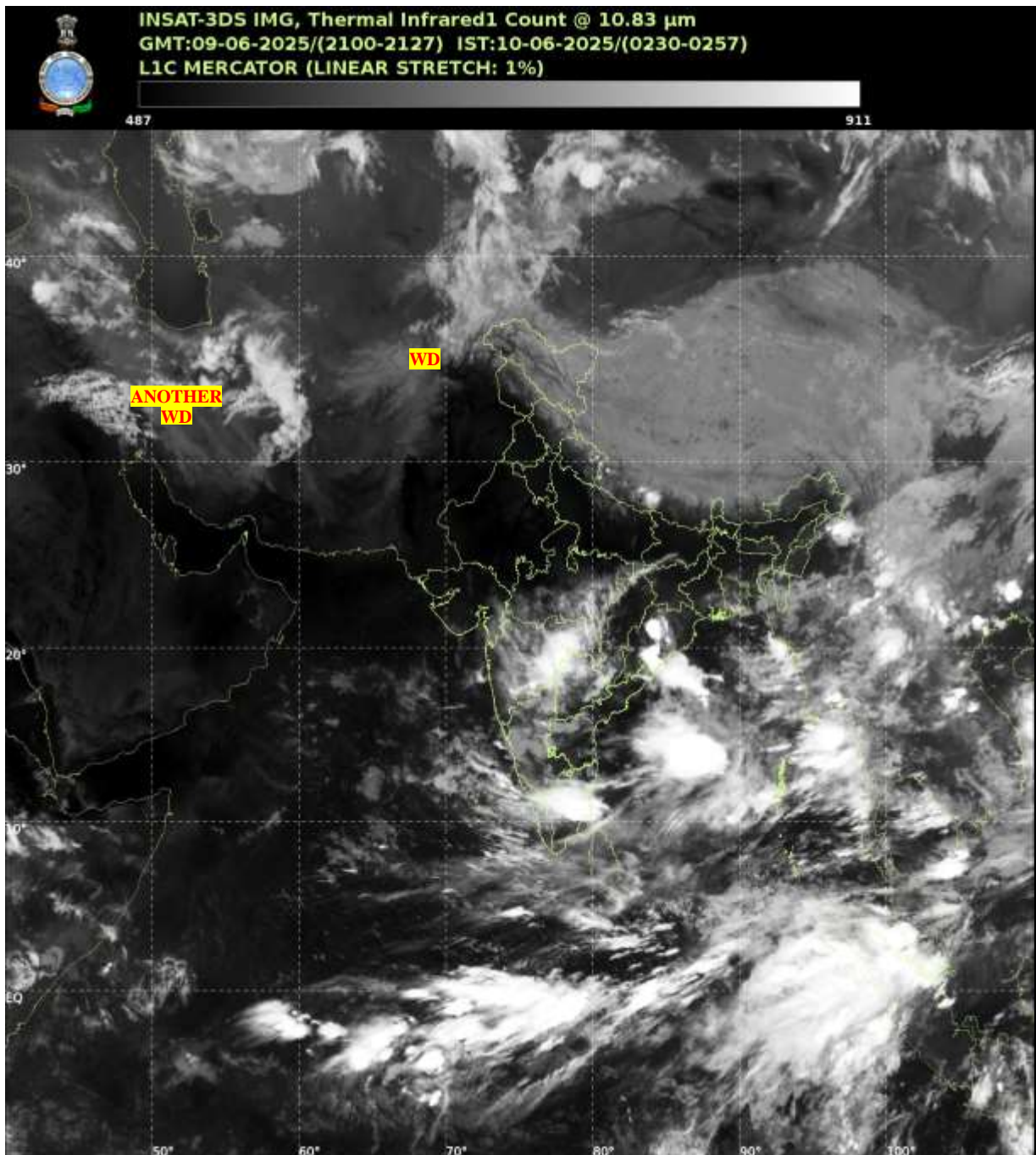




**SATELLITE BULLETIN BASED ON SATELLITE  
IMAGERIES AND PRODUCTS**  
**09.06.2025 TIME 2100 UTC**



TCIN50 DEMS 092100

SATELLITE BULLETIN BASED ON INSAT-3DS PIC OF 092100 UTC (.)

REGION COVERED BETWEEN LAT 50.0°N TO 35.0°S AND LONG 40.0°E TO 125.0°E (.)

**SALIENT FEATURES:-**

**WESTERN DISTURBANCE:-**

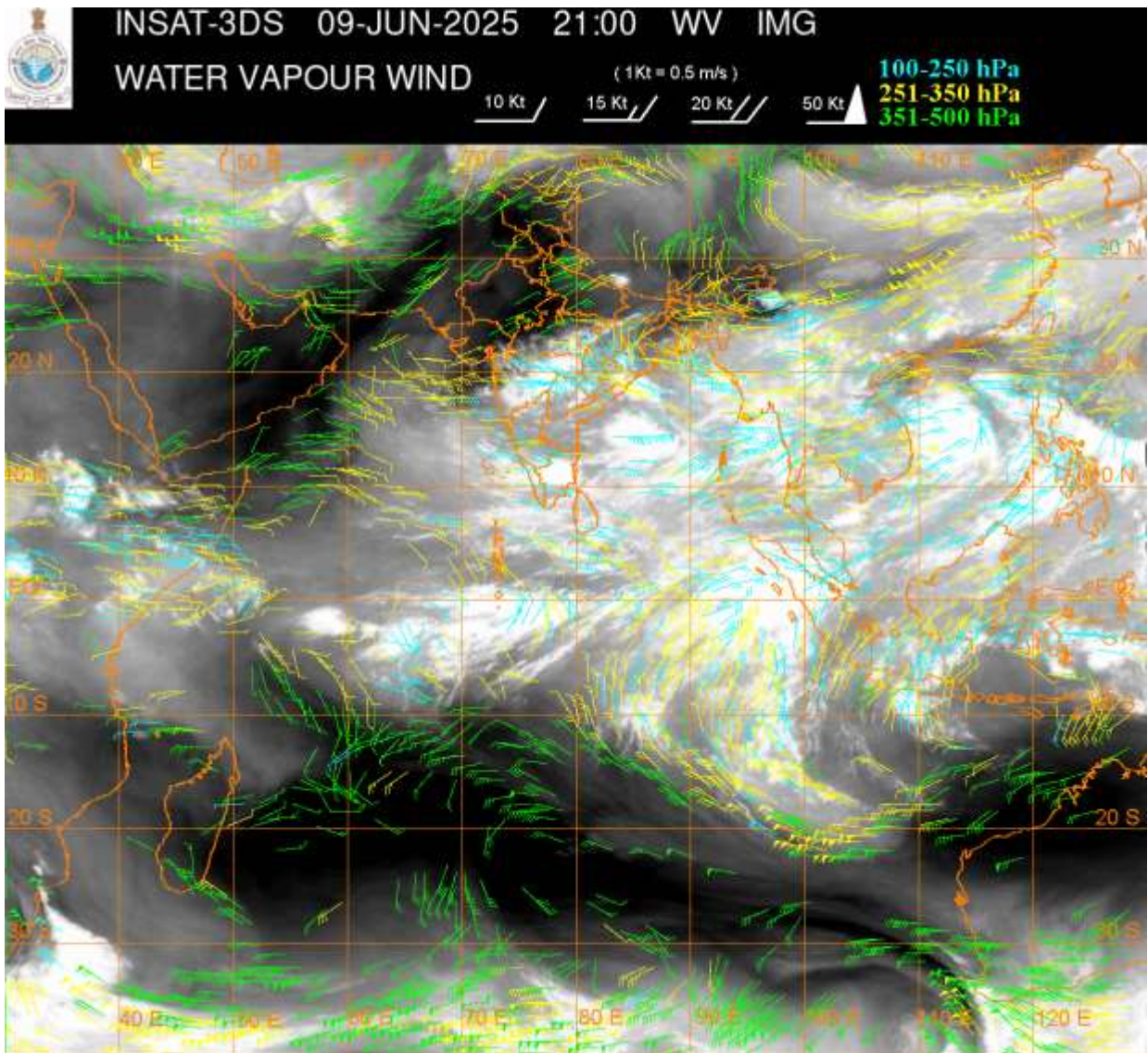
SCT MULTILAYERED CLOUDS OVER E AFGAN ADJ PAK AND N/HOOD IN ASSW **WD** OVER THE AREA (.)

SCT MULTILAYERED CLOUDS OVER IRAN AND N/HOOD IN ASSW **ANOTHER WD** OVER THE AREA (.)

**CONVECTIVE / THUNDERSTORM ACTIVITY:-**

INTENSE CONVECTIVE / THUNDERSTORM ACTIVITY OBSERVED OVER ORS N ADJ C TN (MINIMUM **CTT MINUS 70-80 DEG CEL**) (.)

MODERATE TO INTENSE CONVECTIVE / THUNDERSTORM ACTIVITY OBSERVED OVER NE UTRKND CHTGH SE MP MADHYA MAHA MRTHWD VID NIK SIK TLNGN EXT N COTL AP N KER LKSDP ILS AND ANDAMAN NICOBAR ILS AREA (MINIMUM **CTT MINUS 50-70 DEG CEL**) (.)



**CLOUDS DESCRIPTION WITHIN INDIA:-**

**NORTH:-**

SCT LOW/MED CLOUDS WITH EMBDD ISOL MOD TO INT CONVTN OVER NE UTRKND AND ISOL WK TO MOD CONVTN OVER LADAKH J&K N HP REST UTRKND E UP (.) ISOL LOW/MED CLOUDS OVER S HP W UP (.)

**EAST:-**

SCT TO BKN LOW/MED CLOUDS WITH EMBDD INT TO V INT CONVTN OVER ORS (.) SCT LOW/MED CLOUDS WITH EMBDD MOD TO INT CONVTN OVER CHTGH AND ISOL WK TO MOD CONVTN OVER S BHR JHRKND GWB SKM NE STATES BD (.) ISOL TO SCT LOW/MED CLOUDS OVER N BHR SHWB (.)

**WEST:-**

SCT TO BKN LOW/MED CLOUDS WITH EMBDD MOD TO INT CONVTN OVER SE MP MADHYA MAHA MRTHWD VID (.) SCT LOW/MED CLOUDS WITH EMBDD ISOL WK TO MOD CONVTN OVER REST MP E GUJ KKN GOA (.) SCT LOW/MED CLOUDS OVER W GUJ (.)

**SOUTH:-**

SCT TO BKN LOW/MED CLOUDS WITH EMBDD INT TO V INT CONVTN OVER N ADJ C TN (.) SCT LOW/MED CLOUDS WITH EMBDD MOD TO INT CONVTN OVER NIK SIK TLNGN EXT N COTL AP N KER LKSDP ILS AREA ANDAMAN & NICOBAR ILS AREA AND WK TO MOD CONVTN OVER COTL KRNTK RYLSM REST COTL AP S KER REST TN (.)

**ARABIAN SEA:-**

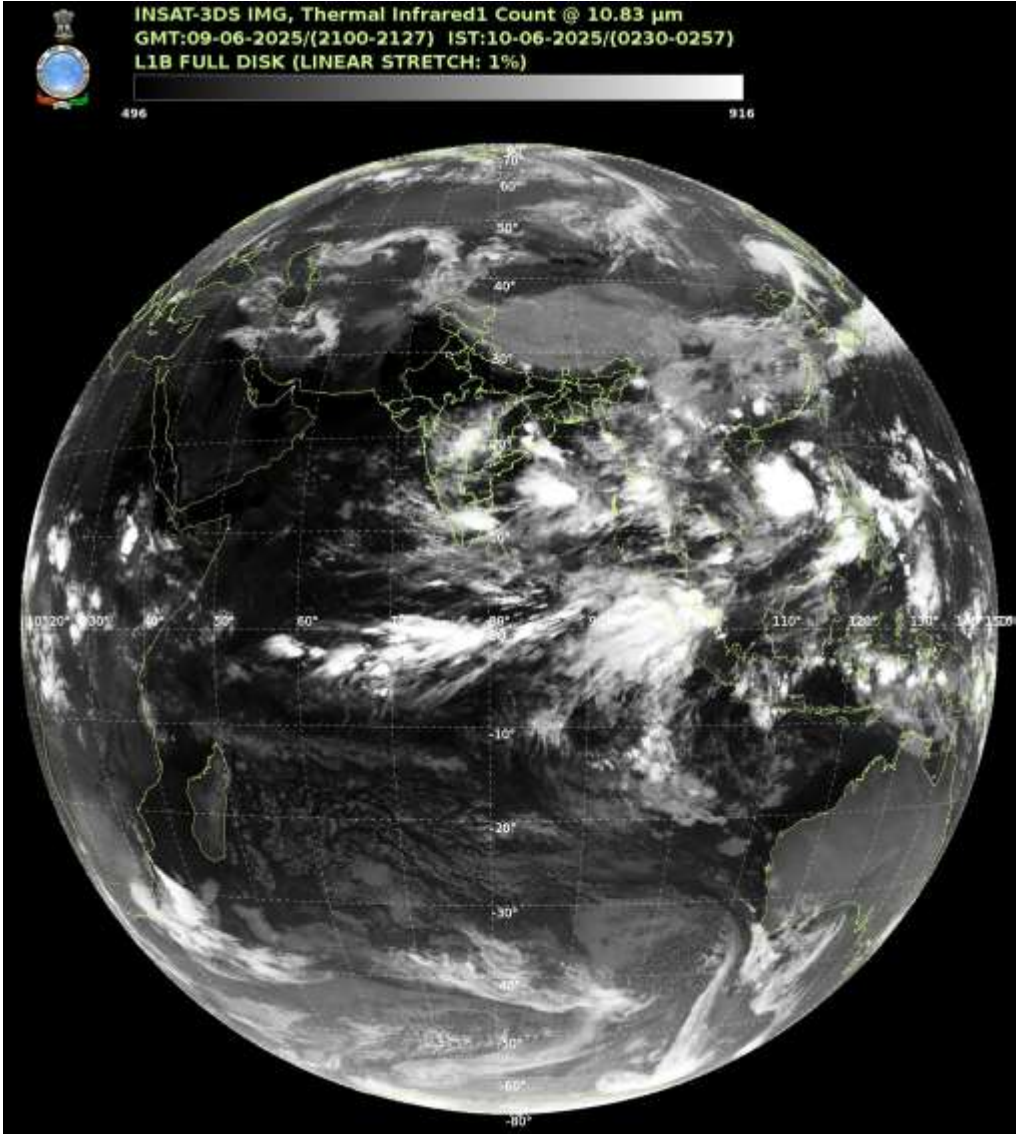
SCT LOW/MED CLOUDS WITH EMBDD MOD TO INT CONVTN OVER SE ARSEA OFF KER COAST & LKSDP ILS AREA (.) SCT LOW/MED CLOUDS WITH EMBDD ISOL WK TO MOD CONVTN OVER CENTRAL ARSEA REST SOUTH ARSEA MALDIVES & COMORIN AREA (.)

**BAY OF BENGAL & ANDAMAN SEA:-**

SCT TO BKN LOW/MED CLOUDS WITH EMBDD INT TO V INT CONVTN OVER CENTRAL BAY & NORTH ANDAMAN SEA (.) SCT LOW/MED CLOUDS WITH EMBDD MOD TO INT CONVTN OVER NORTH & SOUTH BAY AND SOUTH ANDAMAN SEA (.)



**CLOUDS DESCRIPTION OUTSIDE INDIA:-**



SCT LOW/MED CLOUDS WITH EMBDD MOD TO INT CONVTN OVER SRI LANKA PALK STR GULF OF MANNAR MALDIVES NEPAL CHINA YELLOW SEA EAST CHINA SEA TAIWAN MYANMAR THAILAND GULF OF THAILAND CAMBODIA LAOS VIETNAM GULF OF TONKIN SUMATRA STR OF MALACCA MALAYSIA BORNEO SOUTH CHINA SEA JAVA ILS & SEA CELEBES ILS & SEA PHILIPPINES SULU SEA AND OVER INDIAN OCEAN BET LAT 5.0N TO 10.0S LONG 40.0E TO 80.0E AND BET LAT 5.0N TO 20.0S LONG 80.0E TO 110.0E (.)

TOO 10/0445 EF=

NNNN

**LEGEND:-**

|                    |       |   |
|--------------------|-------|---|
| REGION             | NORTH | J&K HP PJB HARY DLH UP UTRKND                     |
|                    | EAST  | BHR JHRKND CHTGH ORS WB SKM NORTH- EAST STATES    |
|                    | WEST  | RAJ MP GUJ MAHA GOA                               |
|                    | SOUTH | TLNGN AP KRNTK KER TN LKSDP ANDAMAN & NICOBAR ILS |
| CLOUD DISTRIBUTION | ISOL  | ISOLATED (LESS THAN 25%)                          |
|                    | SCT   | SCATTERED (25 TO 50%)                             |
|                    | BKN   | BROKEN (51 TO 75%)                                |
|                    | SLD   | SOLID (GREATER THAN 75%)                          |

|   |                        |   |
|---|------------------------|---|
| <b>CLOUDS TOP TEMPERATURE</b>   | <b>CTT</b>             | <b>CLOUD TOP TEMPERATURE</b>                                |
| <b>CONVECTION</b>   | <b>WK CONVTN</b>       | <b>WEAK CONVECTION<br/>(CTT GREATER THAN –25°C)</b>         |
|   | <b>MOD CONVTN</b>      | <b>MODERATE CONVECTION<br/>(CTT BETWEEN -25°C TO -40°C)</b> |
|   | <b>INT CONVTN</b>      | <b>INTENSE CONVECTION<br/>(CTT BETWEEN -41°C TO -70°C)</b>  |
|   | <b>V INT CONVTN</b>    | <b>VERY INTENSE CONVECTION<br/>(CTT LESS THAN -70°C)</b>    |
| <b>METEOROLOGICAL<br/>SUB- DIVISIONS,<br/>STATES &amp; UNION<br/>TERITORIES</b> | <b>ARUPR</b>           | <b>ARUNACHAL PRADESH</b>                                    |
|   | <b>BHR</b>             | <b>BIHAR</b>  |
|   | <b>CHTGH</b>           | <b>CHHATTISGARH</b>   |
|   | <b>COTL AP</b>         | <b>COASTAL ANDHRA PRADESH</b>                               |
|   | <b>COTL KRNTK</b>      | <b>COASTAL KARNATAKA</b>                                    |
|   | <b>COTL ORS</b>        | <b>COASTAL ORISSA</b>                                       |
|   | <b>GUJ</b>             | <b>GUJARAT</b>  |
|   | <b>GWB</b>             | <b>GANGETIC WEST BENGAL</b>                                 |
|   | <b>HARY</b>            | <b>HARYANA</b>  |
|   | <b>DLH</b>             | <b>DELHI</b>  |
|   | <b>HP</b>              | <b>HIMACHAL PRADESH</b>                                     |
|   | <b>J&amp;K</b>         | <b>JAMMU AND KASHMIR</b>                                    |
|   | <b>JHRKND</b>          | <b>JHARKHAND</b>  |
|   | <b>KER</b>             | <b>KERALA</b>   |
|   | <b>KKN</b>             | <b>KONKAN</b>   |
|   | <b>LKSDP</b>           | <b>LAKSHADWEEP</b>  |
|   | <b>M MAHA</b>          | <b>MADHYA MAHARASHTRA</b>                                   |
|   | <b>MAHA</b>            | <b>MAHARASHTRA</b>  |
|   | <b>MANI</b>            | <b>MANIPUR</b>  |
|   | <b>MEGHA</b>           | <b>MEGHALAYA</b>  |
|   | <b>MIZO</b>            | <b>MIZORAM</b>  |
|   | <b>MP</b>              | <b>MADHYA PRADESH</b>                                       |
|   | <b>MRTHWD</b>          | <b>MARATHWADA</b>   |
|   | <b>NAGA</b>            | <b>NAGALAND</b>   |
|   | <b>N COTL AP</b>       | <b>NORTH COASTAL ANDHRA PRADESH</b>                         |
|   | <b>NIK</b>             | <b>NORTH INTERIOR KARNATAKA</b>                             |
|   | <b>ORS</b>             | <b>ORISSA</b>   |
|   | <b>PJB</b>             | <b>PUNJAB</b>   |
|   | <b>RAJ</b>             | <b>RAJASTHAN</b>  |
|   | <b>RYLSM</b>           | <b>RAYALASEEMA</b>  |
|   | <b>SAU &amp; KUTCH</b> | <b>SAURASHTRA &amp; KUTCH</b>                               |
|   | <b>SHWB</b>            | <b>SUB-HIMALAYAN WEST BENGAL</b>                            |
|   | <b>SIK</b>             | <b>SOUTH INTERIOR KARNATAKA</b>                             |
|   | <b>SKM</b>             | <b>SIKKIM</b>   |
|   | <b>TLNGN</b>           | <b>TELANGANA</b>  |
|   | <b>TN</b>              | <b>TAMIL NADU</b>   |
|   | <b>TRP</b>             | <b>TRIPURA</b>  |
|   | <b>UP</b>              | <b>UTTAR PRADESH</b>  |

|                      |               |                                  |
|----------------------|---------------|----------------------------------|
|                      | <b>UTRKND</b> | <b>UTTARAKHAND</b>               |
|                      | <b>VID</b>    | <b>VIDHARBHA</b>                 |
|                      | <b>SHWB</b>   | <b>SUB HIMALAYAN WEST BENGAL</b> |
|                      | <b>GWB</b>    | <b>GANGETIC WEST BENGAL</b>      |
|                      | <b>ARSEA</b>  | <b>ARABIAN SEA</b>               |
|                      | <b>ILS</b>    | <b>ISLANDS</b>                   |
| <b>MISCELLANEOUS</b> | <b>ASSW</b>   | <b>IN ASSOCIATION WITH</b>       |
|                      | <b>ASSTD</b>  | <b>ASSOCIATED</b>                |
|                      | <b>LLC</b>    | <b>LOW LEVEL CIRCULATION</b>     |
|                      | <b>EMBDD</b>  | <b>EMBEDDED</b>                  |
|                      | <b>N/HOOD</b> | <b>NEIGHBOURHOOD</b>             |
|                      | <b>EXT</b>    | <b>EXTREME</b>                   |