



**India Meteorological Department
(Ministry of Earth Sciences)**

HOURLY UPDATE ON SEVERE CYCLONIC STORM “DANA”

BULLETIN NO. 9

DATE: 25-10-2024

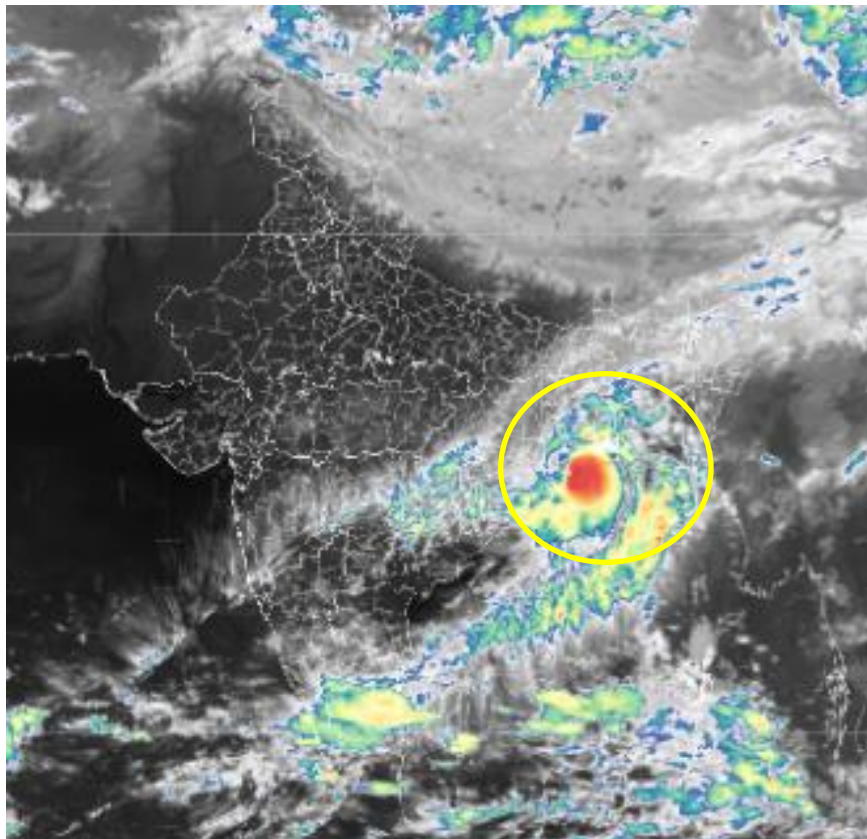
TIME OF ISSUE: 0215 HRS IST

DATE/TIME (IST) OF OBSERVATION	BASED ON 25-10-2024 (0130 HRS IST)
LOCATION LATITUDE/LONGITUDE	THE SEVERE CYCLONIC STORM “DANA” (PRONOUNCED AS DANA) OVER NORTHWEST BAY OF BENGAL MOVED NORTH-NORTHWESTWARDS WITH A SPEED OF 13 KMPH DURING PAST 06 HOURS AND LAY CENTRED AT 0130 HRS IST OF TODAY, THE 25TH OCTOBER, OVER NORTHWEST BAY OF BENGAL NEAR LATITUDE 20.60° N AND LONGITUDE 87.00°E, CLOSE TO ODISHA COAST NEAR HABALIKHATI NATURE CAMP (BHITARKANIKA) 20 KM SOUTH-SOUTHEAST OF DHAMARA (ODISHA).
CURRENT INTENSITY WIND SPEED	SEVERE CYCLONIC STORM 100-110 KMPH GUSTING TO 120 KMPH
FORECAST	IT IS VERY LIKELY TO CONTINUE TO MOVE NORTH-NORTHWESTWARDS AND CROSS NORTH ODISHA COAST CLOSE TO BHITARKANIKA AND DHAMARA (ODISHA) DURING NEXT 1 HOUR AS A SEVERE CYCLONIC STORM WITH A WIND SPEED OF 100-110 KMPH GUSTING 120 KMPH. <i>LANDFALL PROCESS CONTINUES AND THE FORWARD SECTOR OF THE WALL CLOUD REGION CONTINUES TO ENTER INTO LAND. THE LANDFALL PROCESS WOULD CONTINUE TILL TODAY, THE 25TH OCTOBER MORNING.</i> THE SYSTEM IS UNDER CONTINUOUS SURVEILLANCE OF THE DOPPLER WEATHER RADAR AT PARADIP.

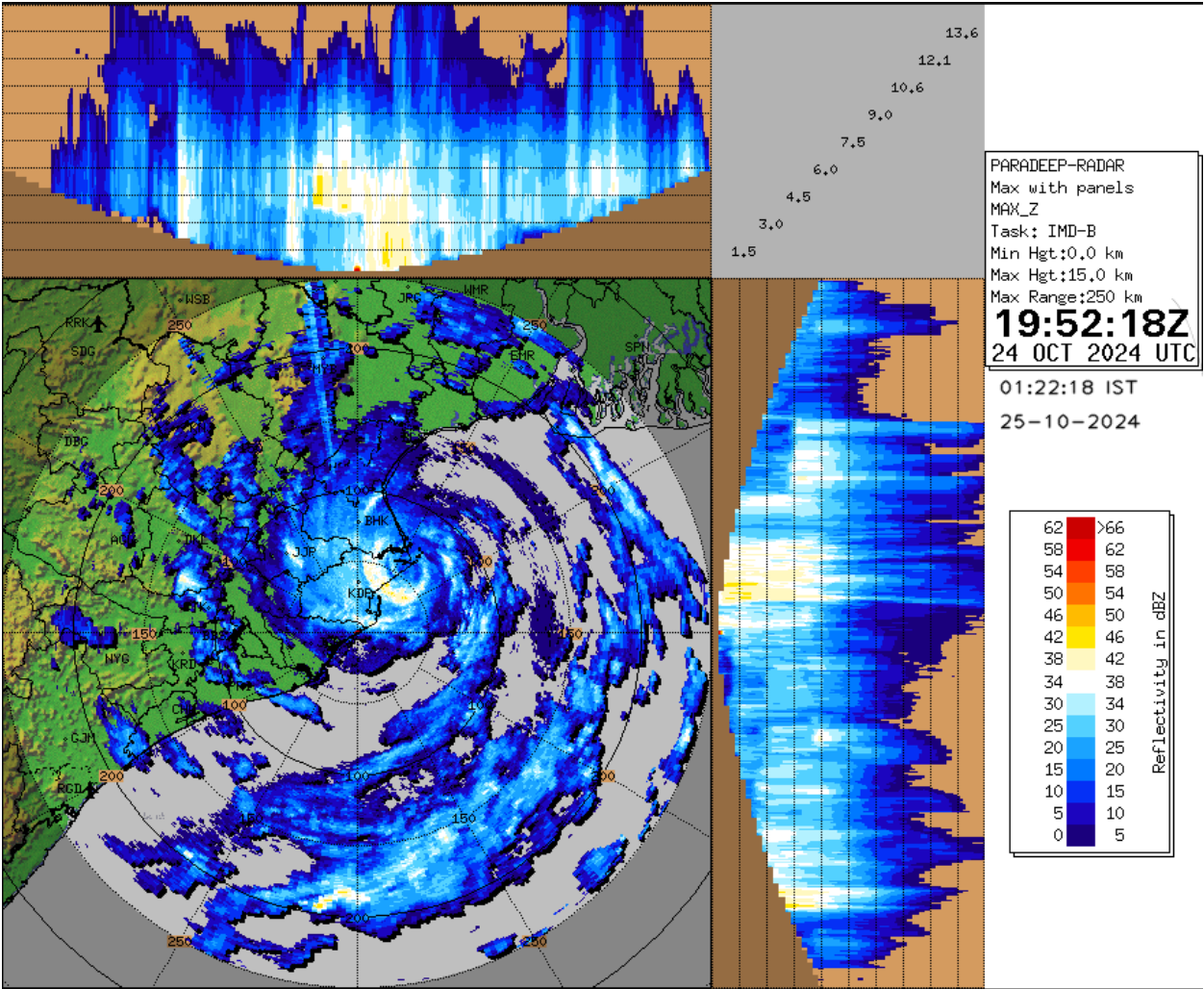
OBSERVED WEATHER:

STATION	RAINFALL (MM) (0830-0130 HRS IST)	WINDSPEED (KNOTS) AT 0130 HRS IST	STATION	RAINFALL (0830-0130 HRS IST)	WINDSPEED (KNOTS) AT 0130 HRS IST
BHUBANESWAR	15.1	9/NWLY	HALDIA	36.0	6/ELY
BALASORE	35.8	12/NELY	DIGHA	36.0	1/WWLY
CHANDBALI	44.2	11/NWLY	DUMDUM	8	8/NELY
PARADIP	44.9	12/NWLY	DIAMOND HARBOUR	21	5/SELY
PURI	16.3	10/NNWLY			

SATELLITE IMAGERY

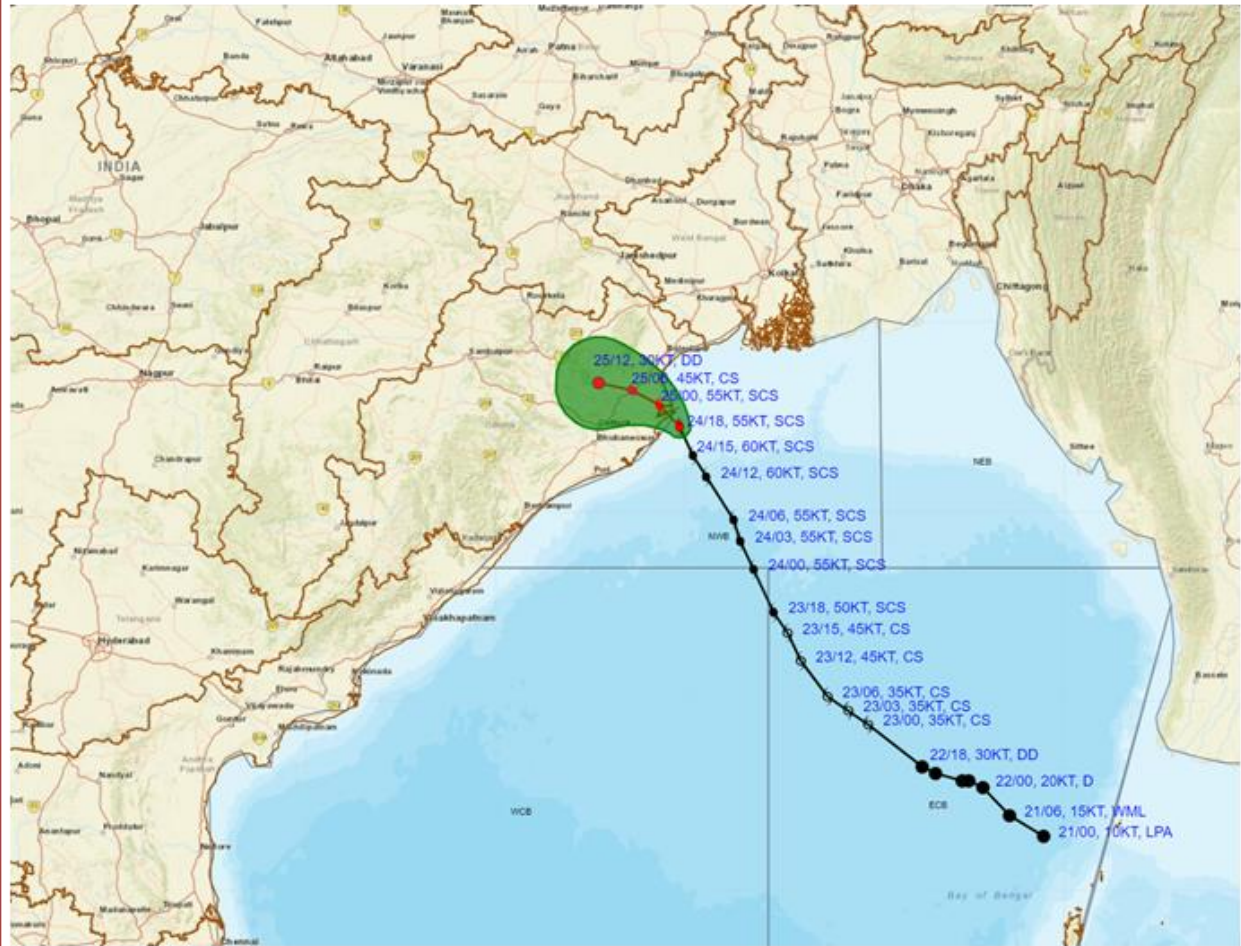


RADAR OBSERVATIONS (MAX_Z) OF DWR PARADIP





OBSERVED AND FORECAST TRACK ALONGWITH CONE OF UNCERTAINTY OF SEVERE CYCLONIC STORM 'DANA' OVER NORTHWEST BAY OF BENGAL BASED ON 1800 UTC (2330 Hrs. IST) OF 24th OCTOBER 2024



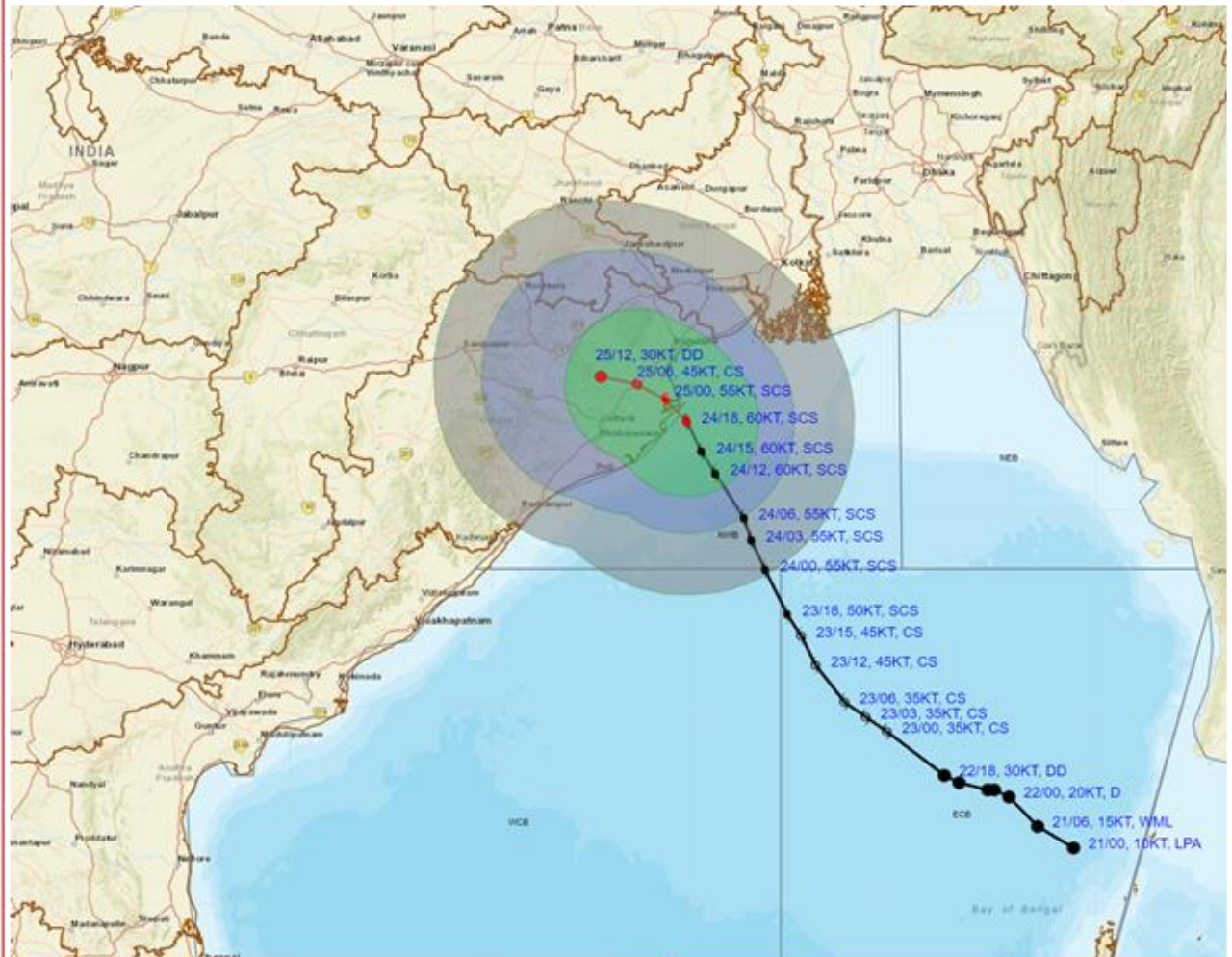
DATE/TIME : IN UTC
 IST : UTC + 0530
 KT : NAUTICAL MILE S/HOUR = 1.85 KM/HOUR
 LPA : LOW PRESSURE AREA
 WML : WELL MARKED LOW PRESSURE AREA
 D : DEPRESSION (17-27 KT)
 DD : DEEP DEPRESSION (28-33 KT)
 CS : CYCLONIC STORM (34-47 KT)
 SCS : SEVERE CYCLONIC STORM (48-63 KT)
 VSCS : VERY SEVERE CYCLONIC STORM (64-89 KT)
 ESCS : EXTREMELY SEVERE CYCLONIC STORM (90-119 KT)
 SuCS : SUPER CYCLONIC STORM (≥120 KT)

- LESS THAN 34 KT
- 34-47 KT
- ≥ 48 KT
- OBSERVED TRACK
- FORECAST TRACK
- ▲ CONE OF UNCERTAINTY

Forecast	DISTANCE (KM) AND DIRECTION FROM STATIONS		
Date and Time (UTC)	PARADIP (CWR)	DHAMARA	SAGAR ISLAND
24.10.24/1800	50, ENE	40, SSE	160, SW



OBSERVED AND FORECAST TRACK ALONGWITH QUADRANT WIND DISTRIBUTION OF SEVERE CYCLONIC STORM 'DANA' OVER NORTHWEST BAY OF BENGAL BASED ON 1800 UTC (2330 Hrs. IST) OF 24th OCTOBER 2024



DATE/TIME : IN UTC
 IST : UTC + 0530
 KT : NAUTICAL MILE S/HOUR = 1.85 KM/HOUR
 LPA : LOW PRESSURE AREA
 WML : WELL MARKED LOW PRESSURE AREA
 D : DEPRESSION (17-27 KT)
 DD : DEEP DEPRESSION (28-33 KT)
 CS : CYCLONIC STORM (34-47 KT)
 SCS : SEVERE CYCLONIC STORM (48-63 KT)
 VSCS : VERY SEVERE CYCLONIC STORM (64-89 KT)
 ESCS : EXTREMELY SEVERE CYCLONIC STORM (90-119 KT)
 SuCS : SUPER CYCLONIC STORM (≥ 120 KT)

● LESS THAN 34 KT
 ○ 34-47 KT
 ○ ≥ 48 KT
 — OBSERVED TRACK
 — FORECAST TRACK
 — CONE OF UNCERTAINTY
 AREA OF MAXIMUM SUSTAINED WIND SPEED:
 ■ 28-33 KT (52-61 KMPH)
 ■ 34-49 KT (62-91 KMPH)
 ■ 50-63 KT (92-117 KMPH)
 ■ ≥ 64 KT (≥ 118 KMPH)

IMPACT OVER THE SEA

MSW (knot/kmph)	Impact	Action
28-33 (52-61)	Very rough seas	Total suspension of fishing operations
34-49 (62-91)	High to very high seas	Total suspension of fishing operations
50-63 (92-117)	Very high seas	Total suspension of fishing operations
≥ 64 (≥ 118)	Phenomenal	Total suspension of fishing operations