



**India Meteorological Department
(Ministry of Earth Sciences)**

HOURLY UPDATE ON SEVERE CYCLONIC STORM "DANA"

BULLETIN NO. 11

DATE: 25-10-2024

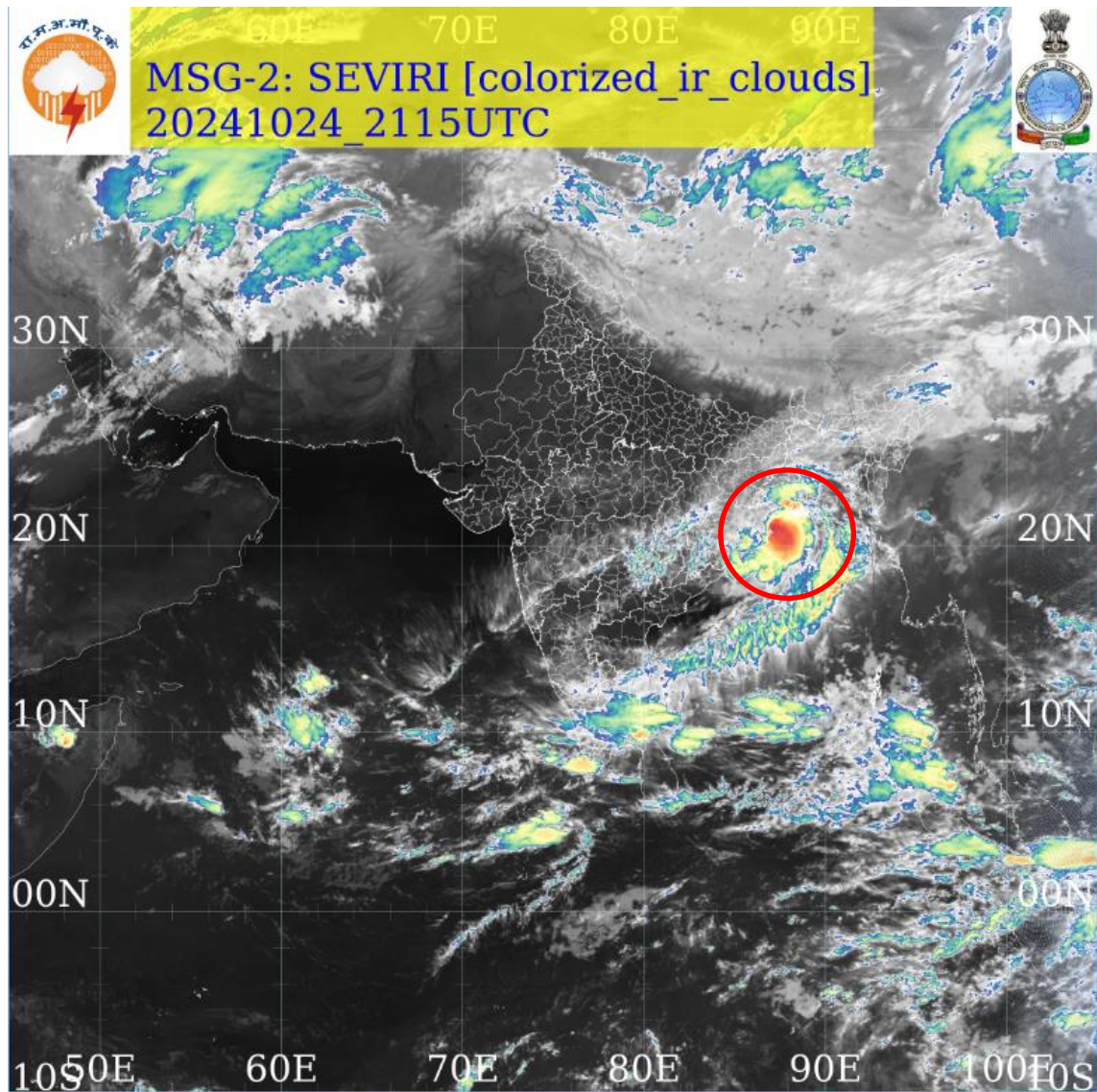
TIME OF ISSUE: 0415 HRS IST

DATE/TIME (IST) OF OBSERVATION	BASED ON 25-10-2024 (0330 HRS IST)
LOCATION LATITUDE/LONGITUDE	<p>THE SEVERE CYCLONIC STORM "DANA" (PRONOUNCED AS DANA) MOVED NORTH-NORTHWESTWARDS AND CROSSED THE NORTH ODISHA COAST CLOSE TO HABALIKHATI NATURE CAMP (BHITARKANIKA) AND DHAMARA DURING 0130-0330 HRS IST OF TODAY, THE 25TH OCTOBER AS A SEVERE CYCLONIC STORM WITH A WIND SPEED OF 100-110 KMPH GUSTING TO 120 KMPH.</p> <p>IT LAY CENTRED AT 0330 HRS IST OF TODAY, THE 25TH OCTOBER, OVER NORTH COASTAL ODISHA NEAR LATITUDE 20.85° N AND LONGITUDE 86.90°E, ABOUT 10 KM NORTH OF DHAMARA AND 20 KM NORTH-NORTHWEST OF HABALIKHATI NATURE CAMP (BHITARKANIKA).</p>
CURRENT INTENSITY WIND SPEED	SEVERE CYCLONIC STORM 100-110 KMPH GUSTING TO 120 KMPH
FORECAST	<p><i>LANDFALL PROCESS CONTINUES AND THE REAR SECTOR OF THE CYCLONE IS ENTERING INTO LAND. THE LANDFALL PROCESS WOULD CONTINUE FOR NEXT 2-3 HOURS.</i></p> <p><i>IT IS LIKELY TO MOVE NEARLY WEST-NORTHWESTWARDS ACROSS NORTH ODISHA AND WEAKEN GRADUALLY INTO A CYCLONIC STORM BY FORENOON OF TODAY, THE 25TH OCTOBER.</i></p> <p>THE SYSTEM IS UNDER CONTINUOUS SURVEILLANCE OF THE DOPPLER WEATHER RADAR AT PARADIP.</p>

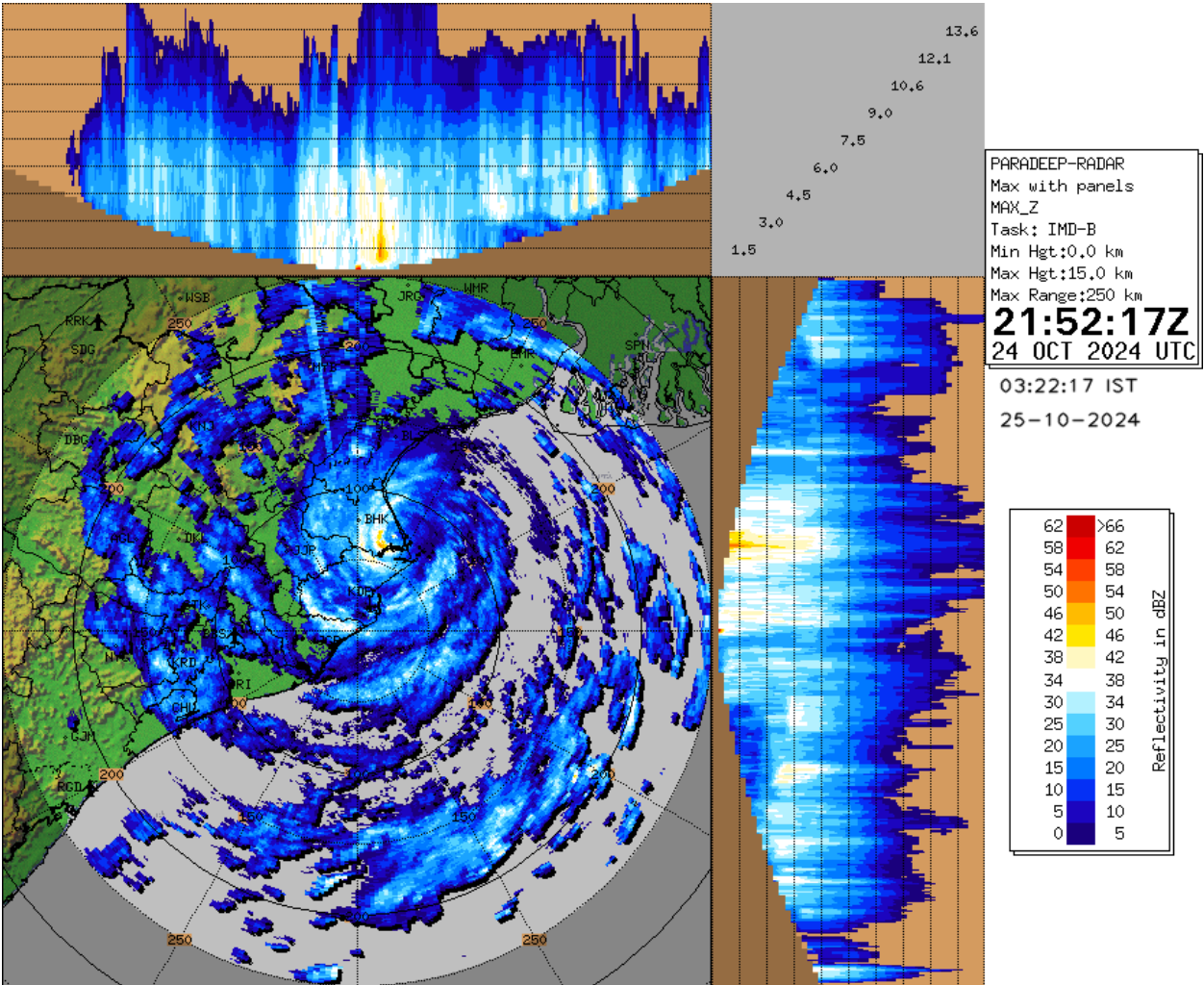
OBSERVED WEATHER:

STATION	RAINFALL (MM) (0830-0330 HRS IST)	WINDSPEED (KMPH) AT 0330 HRS IST	STATION	RAINFALL (0830-0330 HRS IST)	WINDSPEED (KMPH) AT 0330 HRS IST
BHUBANESWAR	18.8	17/NELY	HALDIA	44.0	11/ENELY
BALASORE	37.8	25/NELY	DIGHA	36.0	30/ESELY
CHANDBALI	100.6	69/WWLY			
PARADIP	54.6	22/WWLY			
PURI	16.8	18/NNWLY			

SATELLITE IMAGERY

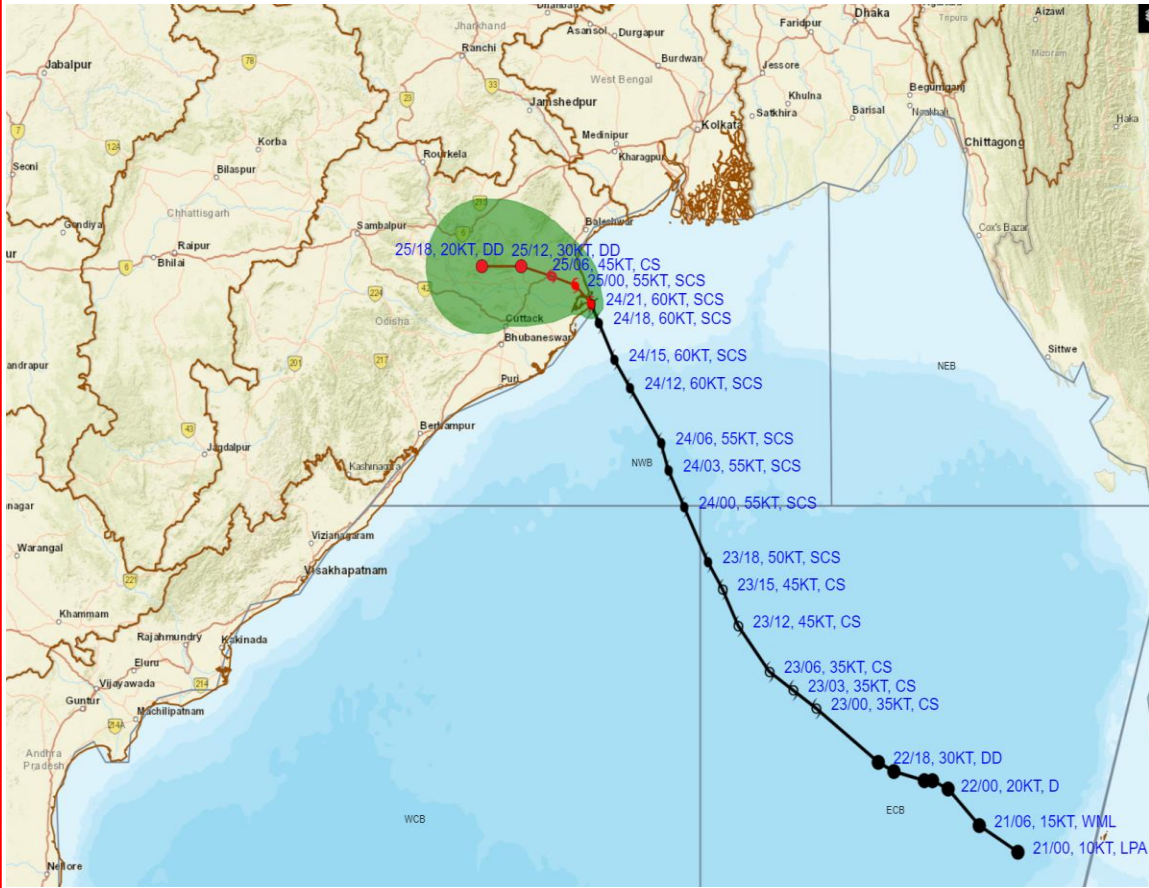


RADAR OBSERVATIONS (MAX_Z) OF DWR PARADIP





OBSERVED AND FORECAST TRACK ALONGWITH CONE OF UNCERTAINTY OF SEVERE CYCLONIC STORM 'DANA' OVER NORTH ODISHA COAST BASED ON 2100 UTC (0230 Hrs. IST) OF 24th OCTOBER 2024



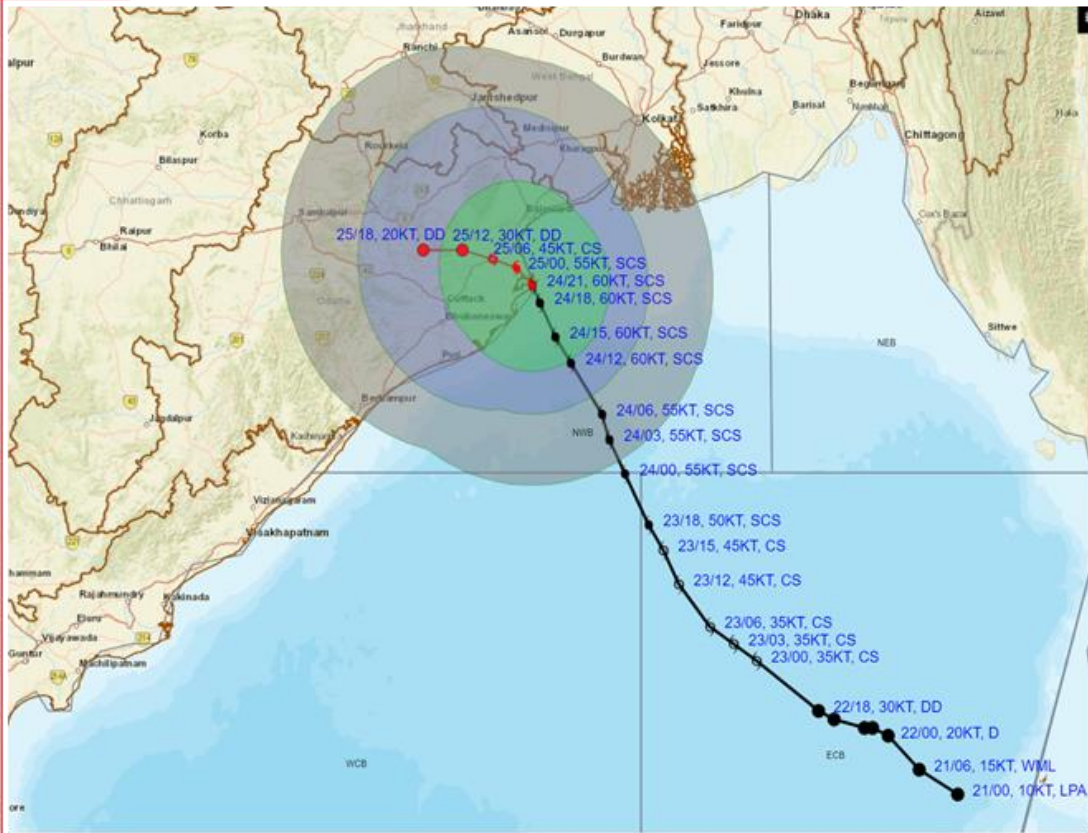
DATE/TIME : IN UTC
 IST : UTC + 0530
 KT : NAUTICAL MILE S/HOUR = 1.85 KM/HOUR
 LPA : LOW PRESSURE AREA
 WML : WELL MARKED LOW PRESSURE AREA
 D : DEPRESSION (17-27 KT)
 DD : DEEP DEPRESSION (28-33 KT)
 CS : CYCLONIC STORM (34-47 KT)
 SCS : SEVERE CYCLONIC STORM (48-63 KT)
 VSCS : VERY SEVERE CYCLONIC STORM (64-89 KT)
 ESCS : EXTREMELY SEVERE CYCLONIC STORM (90-119 KT)
 SuCS : SUPER CYCLONIC STORM (≥ 120 KT)

● LESS THAN 34 KT
 ⌀ 34-47 KT
 ⌀ ≥ 48 KT
 — OBSERVED TRACK
 — FORECAST TRACK
 ◀ CONE OF UNCERTAINTY

Forecast	DISTANCE (KM) AND DIRECTION FROM STATIONS		
	PARADIP (CWR)	DHAMARA	SAGAR ISLAND
24.10.24/2100	60, NE	20, SE	150, SW
25.10.24/1800	140, NW	140, WNW	260, WSW



OBSERVED AND FORECAST TRACK ALONGWITH QUADRANT WIND DISTRIBUTION OF SEVERE CYCLONIC STORM 'DANA' OVER NORTH ODISHA COAST BASED ON 2100 UTC (0230 Hrs. IST) OF 24th OCTOBER 2024



DATE/TIME : IN UTC
 IST : UTC + 0530
 KT : NAUTICAL MILE/ HOUR = 1.85 KM/HOUR
 LPA : LOW PRESSURE AREA
 WML : WELL MARKED LOW PRESSURE AREA
 D : DEPRESSION (17-27 KT)
 DD : DEEP DEPRESSION (28-33 KT)
 CS : CYCLONIC STORM (34-47 KT)
 SCS : SEVERE CYCLONIC STORM (48-63 KT)
 VSCS : VERY SEVERE CYCLONIC STORM (64-89 KT)
 ESCS : EXTREMELY SEVERE CYCLONIC STORM (90-119 KT)
 SuCS : SUPER CYCLONIC STORM (≥ 120 KT)

● LESS THAN 34 KT
 ○ 34-47 KT
 ● ≥ 48 KT
 — OBSERVED TRACK
 — FORECAST TRACK
 — CONE OF UNCERTAINTY
 AREA OF MAXIMUM SUSTAINED WIND SPEED:
 ■ 28-33 KT (52-61 KMPH)
 ■ 34-49 KT (62-91 KMPH)
 ■ 50-63 KT (92-117 KMPH)
 ■ ≥ 64 KT (≥ 118 KMPH)

IMPACT OVER THE SEA

MSW (knot/kmph)	Impact	Action
28-33 (52-61)	Very rough seas	Total suspension of fishing operations
34-49 (62-91)	High to very high seas	Total suspension of fishing operations
50-63 (92-117)	Very high seas	Total suspension of fishing operations
≥ 64 (≥ 118)	Phenomenal	Total suspension of fishing operations