



**India Meteorological Department
(Ministry of Earth Sciences)**

HOURLY UPDATE ON SEVERE CYCLONIC STORM “DANA”

BULLETIN NO. 7

DATE: 25-10-2024

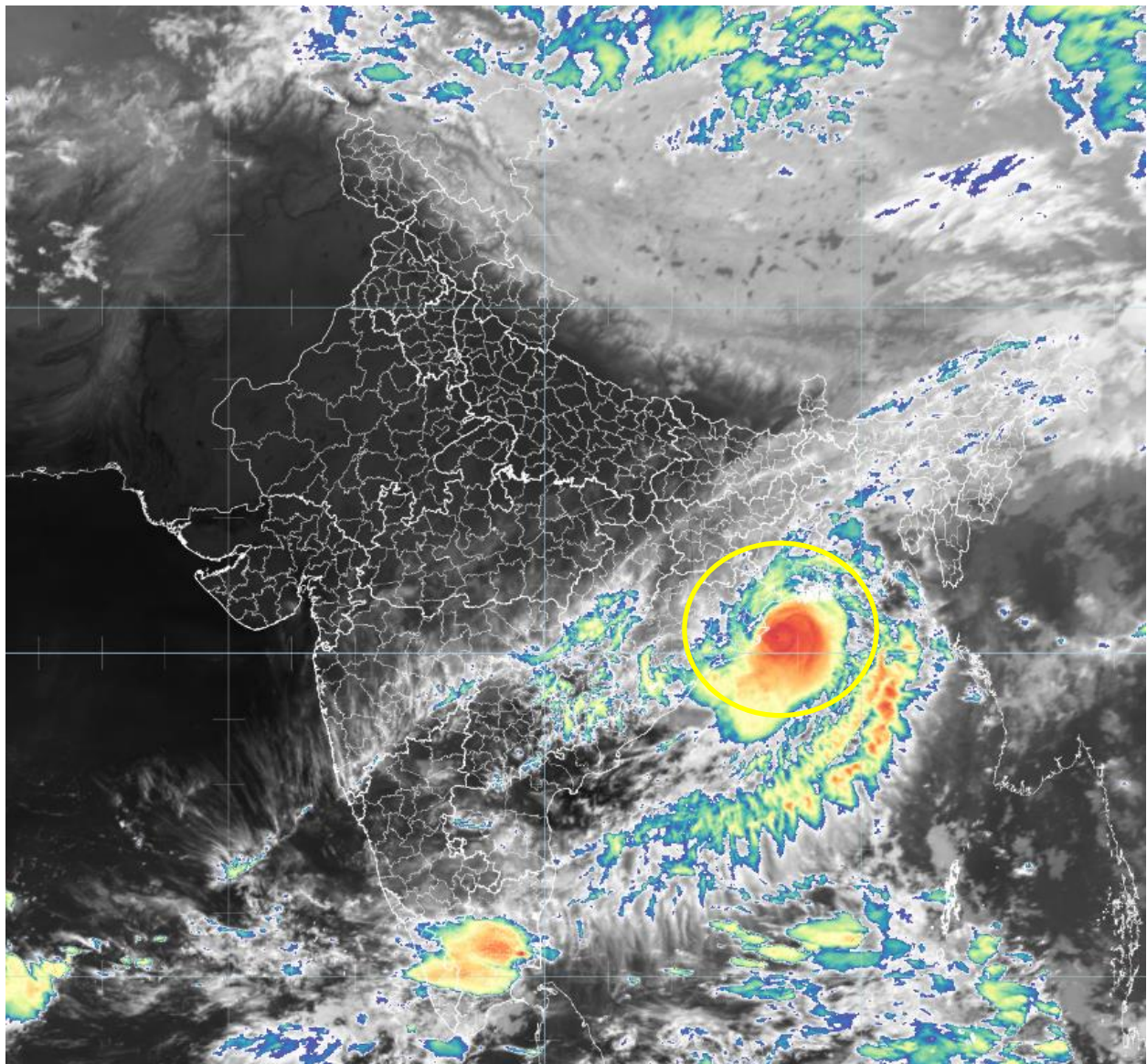
TIME OF ISSUE: 0030 HRS IST

DATE/TIME (IST) OF OBSERVATION	BASED ON 24-10-2024 (2330 HRS IST)
LOCATION LATITUDE/LONGITUDE	THE SEVERE CYCLONIC STORM “DANA” (PRONOUNCED AS DANA) OVER NORTHWEST BAY OF BENGAL MOVED NORTH-NORTHWESTWARDS WITH A SPEED OF 15 KMPH DURING PAST 06 HOURS AND LAY CENTRED AT 2330 HRS IST OF YESTERDAY, THE 24TH OCTOBER, OVER THE SAME REGION, NEAR LATITUDE 20.50° N AND LONGITUDE 87.10°E, ABOUT 50 KM EAST-NORTHEAST OF PARADIP (ODISHA), 40 KM SOUTH-SOUTHEAST OF DHAMARA (ODISHA) AND 160 KM SOUTHWEST OF SAGAR ISLAND (WEST BENGAL).
CURRENT INTENSITY WIND SPEED	SEVERE CYCLONIC STORM 100-110 KMPH GUSTING TO 120 KMPH
FORECAST	IT IS VERY LIKELY TO MOVE NORTH-NORTHWESTWARDS AND CROSS NORTH ODISHA AND WEST BENGAL COASTS BETWEEN PURI AND SAGAR ISLAND CLOSE TO BHITARKANIKA AND DHAMARA (ODISHA) DURING NEXT 3 TO 4 HOURS AS A SEVERE CYCLONIC STORM WITH A WIND SPEED OF 100-110 KMPH GUSTING 120 KMPH. <i>LANDFALL PROCESS HAS COMMENCED AND THE FORWARD SECTOR OF THE WALL CLOUD REGION IS ENTERING INTO LAND. THE LANDFALL PROCESS WOULD CONTINUE TILL TODAY, THE 25TH OCTOBER MORNING.</i> THE SYSTEM IS UNDER CONTINUOUS SURVEILLANCE OF THE DOPPLER WEATHER RADAR AT PARADIP.

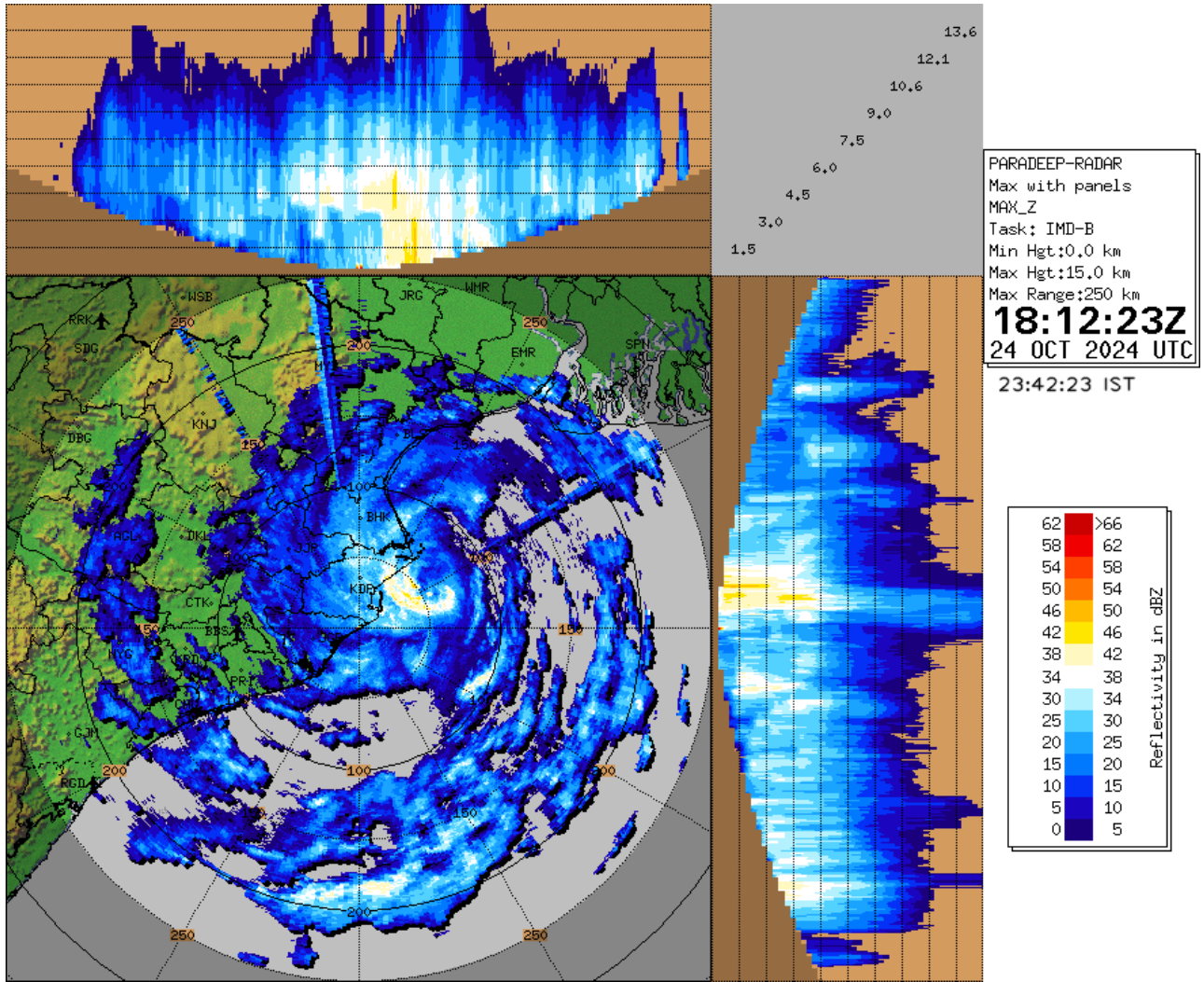
OBSERVED WEATHER:

STATION	RAINFALL (MM) (0830-2330 HRS IST)	WINDSPEED (KNOTS) AT 2330 HRS IST	STATION	RAINFALL (0830-2330 HRS IST)	WINDSPEED (KNOTS) AT 2330 HRS IST
BHUBANESWAR	15.1	9/NWLY	HALDIA	23.0	5/NELY
BALASORE	29.8	10/NELY	DIGHA	36.0	8/NELY
CHANDBALI	35.0	5/NWLY	DUMDUM	8	8/NELY
PARADIP	42.4	16/WNWLY	DIAMOND HARBOUR	17	4/ENELY
PURI	15.7	10/NNWLY			

SATELLITE IMAGERY

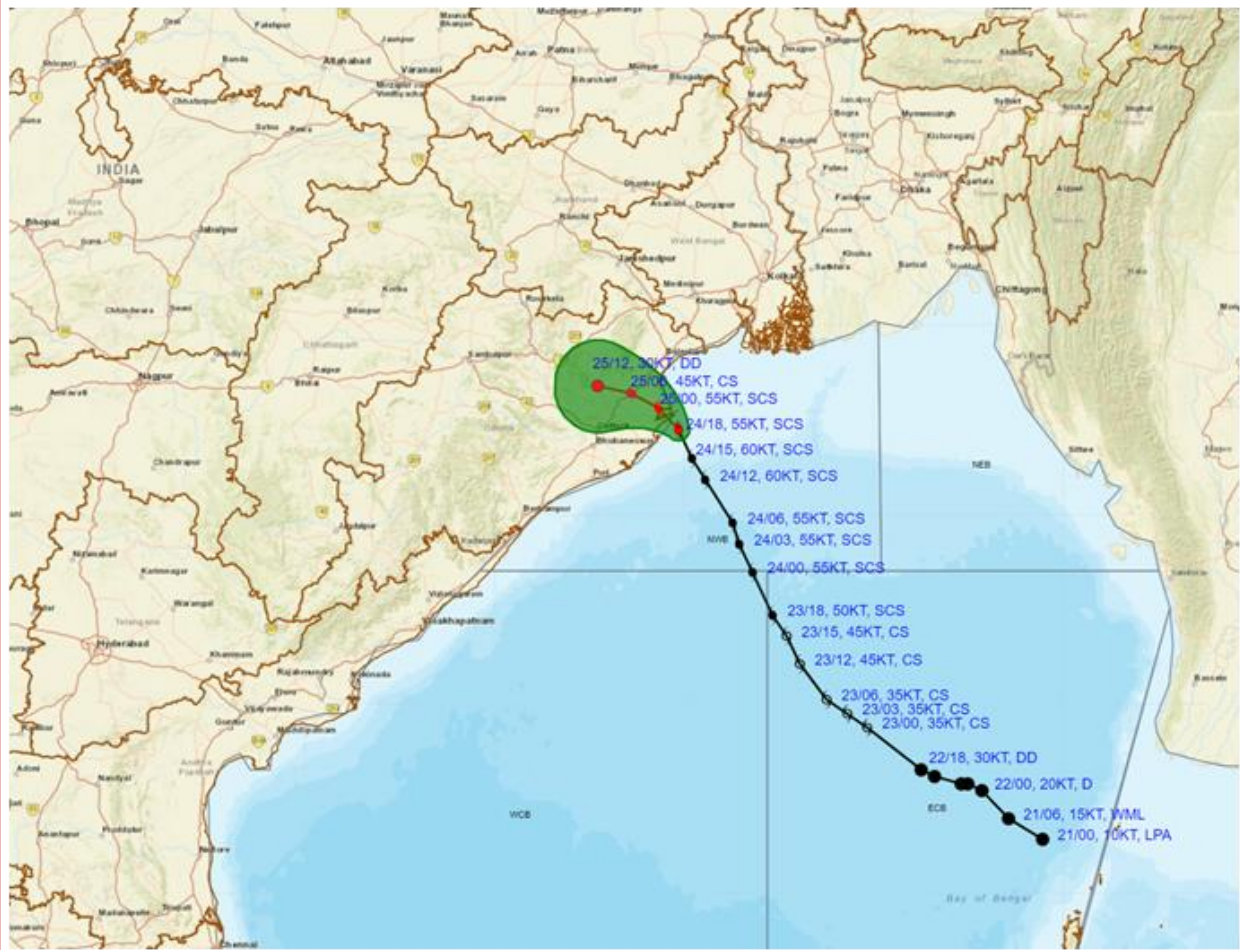


RADAR OBSERVATIONS (MAX_Z) OF DWR PARADIP





OBSERVED AND FORECAST TRACK ALONGWITH CONE OF UNCERTAINTY OF SEVERE CYCLONIC STORM 'DANA' OVER NORTHWEST BAY OF BENGAL BASED ON 1800 UTC (2330 Hrs. IST) OF 24th OCTOBER 2024



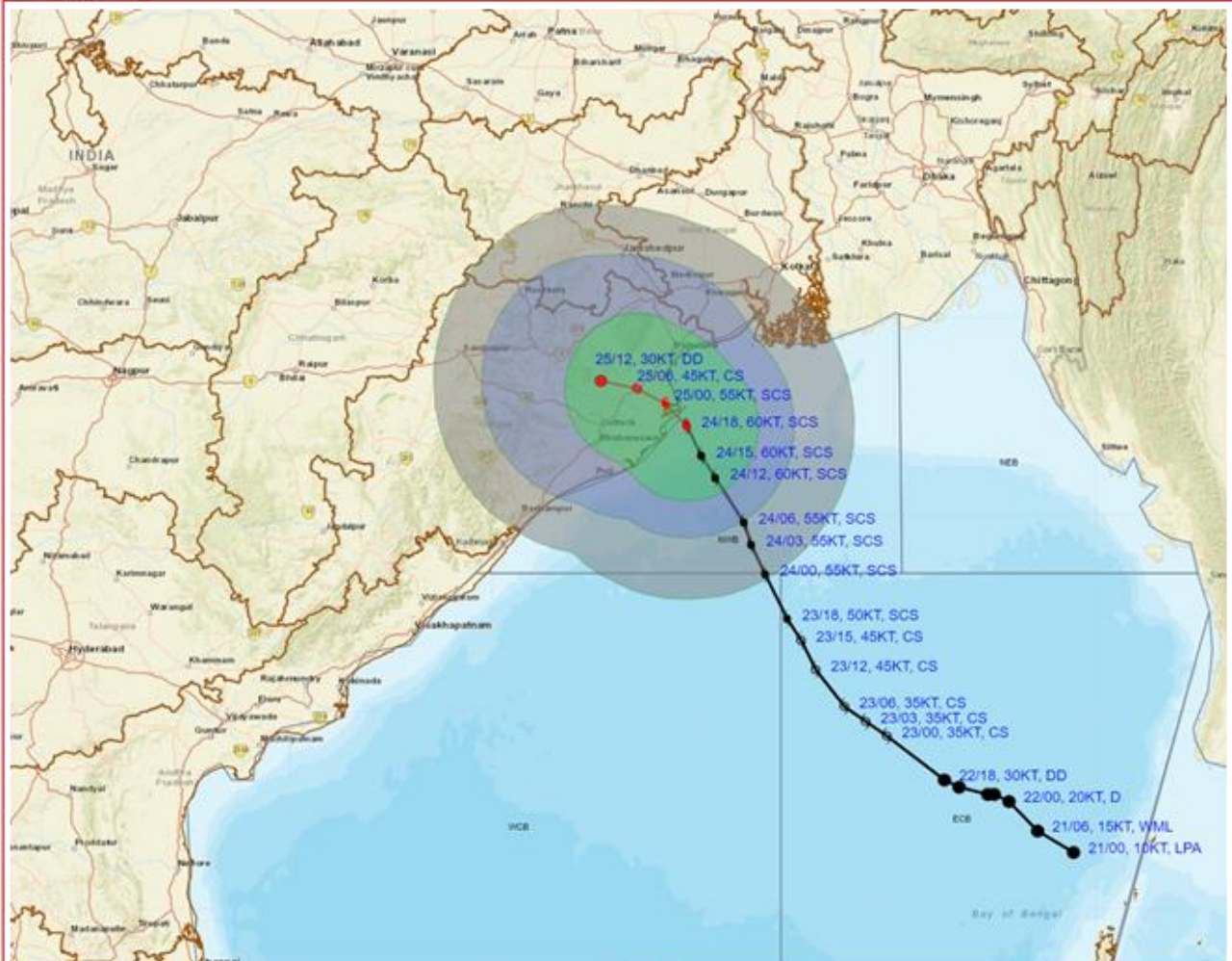
DATE/TIME : IN UTC
 IST : UTC + 0530
 KT : NAUTICAL MILE S/HOUR = 1.85 KM/HOUR
 LPA : LOW PRESSURE AREA
 WML : WELL MARKED LOW PRESSURE AREA
 D : DEPRESSION (17-27 KT)
 DD : DEEP DEPRESSION (28-33 KT)
 CS : CYCLONIC STORM (34-47 KT)
 SCS : SEVERE CYCLONIC STORM (48-63 KT)
 VSCS : VERY SEVERE CYCLONIC STORM (64-89 KT)
 ESCS : EXTREMELY SEVERE CYCLONIC STORM (90-119 KT)
 SuCS : SUPER CYCLONIC STORM (≥120 KT)

● LESS THAN 34 KT
 ○ 34-47 KT
 ○ ≥ 48 KT
 — OBSERVED TRACK
 — FORECAST TRACK
 ▲ CONE OF UNCERTAINTY

Forecast	DISTANCE (KM) AND DIRECTION FROM STATIONS		
Date and Time (UTC)	PARADIP (CWR)	DHAMARA	SAGAR ISLAND
24.10.24/1800	50, ENE	40, SSE	160, SW



OBSERVED AND FORECAST TRACK ALONGWITH QUADRANT WIND DISTRIBUTION OF SEVERE CYCLONIC STORM 'DANA' OVER NORTHWEST BAY OF BENGAL BASED ON 1800 UTC (2330 Hrs. IST) OF 24th OCTOBER 2024



DATE/TIME : IN UTC
 IST : UTC + 0530
 KT : NAUTICAL MILE S/HOUR = 1.85 KM/HOUR
 LPA : LOW PRESSURE AREA
 WML : WELL MARKED LOW PRESSURE AREA
 D : DEPRESSION (17-27 KT)
 DD : DEEP DEPRESSION (28-33 KT)
 CS : CYCLONIC STORM (34-47 KT)
 SCS : SEVERE CYCLONIC STORM (48-63 KT)
 VSCS : VERY SEVERE CYCLONIC STORM (64-89 KT)
 ESCS : EXTREMELY SEVERE CYCLONIC STORM (90-119 KT)
 SuCS : SUPER CYCLONIC STORM (≥ 120 KT)

● LESS THAN 34 KT
 ○ 34-47 KT
 ● ≥ 48 KT
 — OBSERVED TRACK
 — FORECAST TRACK
 — CONE OF UNCERTAINTY
 AREA OF MAXIMUM SUSTAINED WIND SPEED:
 — 28-33 KT (52-61 KMPH)
 — 34-49 KT (62-91 KMPH)
 — 50-63 KT (92-117 KMPH)
 — ≥ 64 KT (≥ 118 KMPH)

IMPACT OVER THE SEA

MSW (knot/kmph)	Impact	Action
28-33 (52-61)	Very rough seas	Total suspension of fishing operations
34-49 (62-91)	High to very high seas	Total suspension of fishing operations
50-63 (92-117)	Very high seas	Total suspension of fishing operations
≥ 64 (≥ 118)	Phenomenal	Total suspension of fishing operations