



**India Meteorological Department  
(Ministry of Earth Sciences)**

**HOURLY UPDATE ON CYCLONIC STORM “DANA”**

**BULLETIN NO. 20**

DATE: 25-10-2024

TIME OF ISSUE: 1300 HRS IST

<b>DATE/TIME (IST) OF OBSERVATION</b>	<b>BASED ON 25-10-2024 (1230 HRS IST)</b>
LOCATION LATITUDE/LONGITUDE	THE CYCLONIC STORM “DANA” (PRONOUNCED AS DANA) MOVED NORTH-NORTHWESTWARDS WITH A SPEED OF 07 KMPH AND LAY CENTRED NEAR LATITUDE 21.4° N AND LONGITUDE 86.5°E AT 1230 HRS IST OF TODAY, THE 25TH OCTOBER, OVER NORTH COASTAL ODISHA, ABOUT 40 KM NORTH-NORTHEAST OF BHADRAK AND 70 KM NORTH-NORTHWEST OF DHAMARA.
CURRENT INTENSITY WIND SPEED	CYCLONIC STORM 65-75 KMPH GUSTING TO 85 KMPH
FORECAST	<i>IT IS LIKELY TO MOVE NEARLY WESTWARDS ACROSS NORTH ODISHA AND WEAKEN GRADUALLY INTO A DEEP DEPRESSION DURING NEXT 06 HOURS.</i>  THE SYSTEM IS UNDER CONTINUOUS SURVEILLANCE OF THE DOPPLER WEATHER RADAR AT PARADIP.

- ❖ **Maximum Storm Surge height of 1-2m height above astronomical tide inundated low lying areas of Kendrapara, & Bhadrak districts of Odisha during the time of landfall.**
- ❖ **Rainfall (in mm) during last 03hours from 0830IST to 1230IST over Odisha & West Bengal:**
  1. Chandbali – 80mm
  2. Balasore – 35.4mm
  3. Haldia – 27mm
  4. Diamond Harbour – 24mm
  5. Alipore (Kolkatta) – 65mm, Dum-Dum – 49mm & Salt Lake – 46mm

Rainfall during past 24hours till 0830IST of today, 25.10.2024 over Odisha & West Bengal is attached below.

DISTRICTS	STATION	RAINFALL
BHADRAK	CHANDBALI	158.6
KENDRAPADA	RAJKANIKA *	156.0
BHADRAK	BASUDEVPUR	110.0
KENDRAPADA	MARSHAGHAI	110.0
BALASORE	OUPADA	109.0
KENDRAPADA	RAJNAGAR	100.0
KENDRAPADA	MOHAKALAPADA	90.0
KENDRAPADA	AUL	80.0
JAGATSINGHPUR	PARADEEP	76.4
KENDRAPADA	DERABIS	72.0
BHADRAK	BHADRAK	70.2
BALASORE	BALASORE	68.8
JAJPUR	JAJPUR (PTO)	68.2
KENDRAPADA	KENDRAPADA (PTO)	67.2
BALASORE	NILGIRI *	67.0
KENDRAPADA	KENDRAPADA *	66.0
KENDRAPADA	PATAMUNDAI *	65.9
BALASORE	SORO	63.0
JAJPUR	BINJHARPUR	60.0
JAJPUR	JAJPUR	60.0
MAYURBHANJ	UDALA *	60.0
MAYURBHANJ	KUSUMI	57.0
BHADRAK	TIHIDI	56.0
BALASORE	BAHANGA	53.0
JAJPUR	BARI	52.0
KENDRAPADA	GARADPUR	52.0
ANGUL	TALCHER	52.0

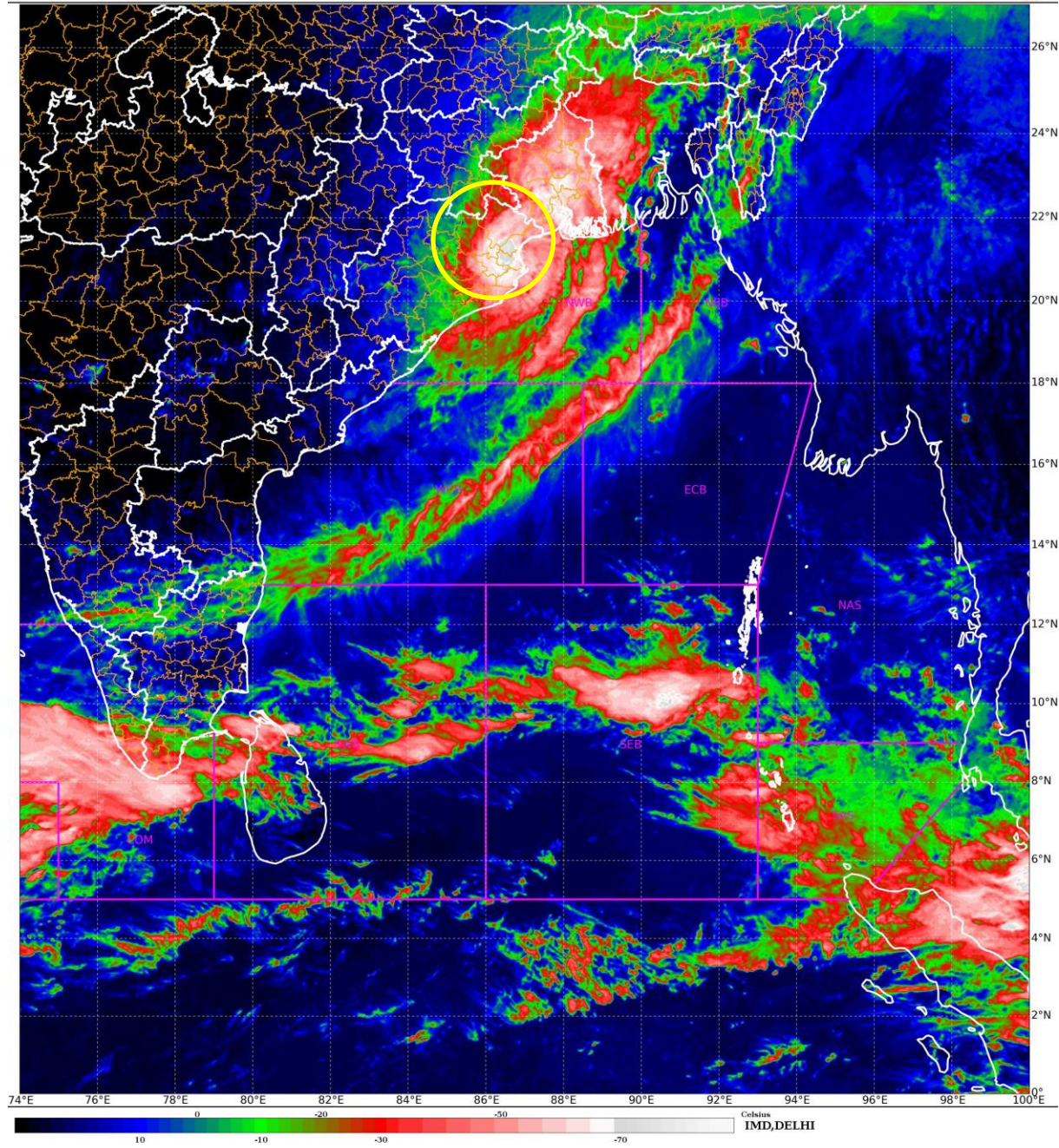
**Rainfall during past 24hours till 0830IST of today, 25.10.2024 over West Bengal is attached below.**

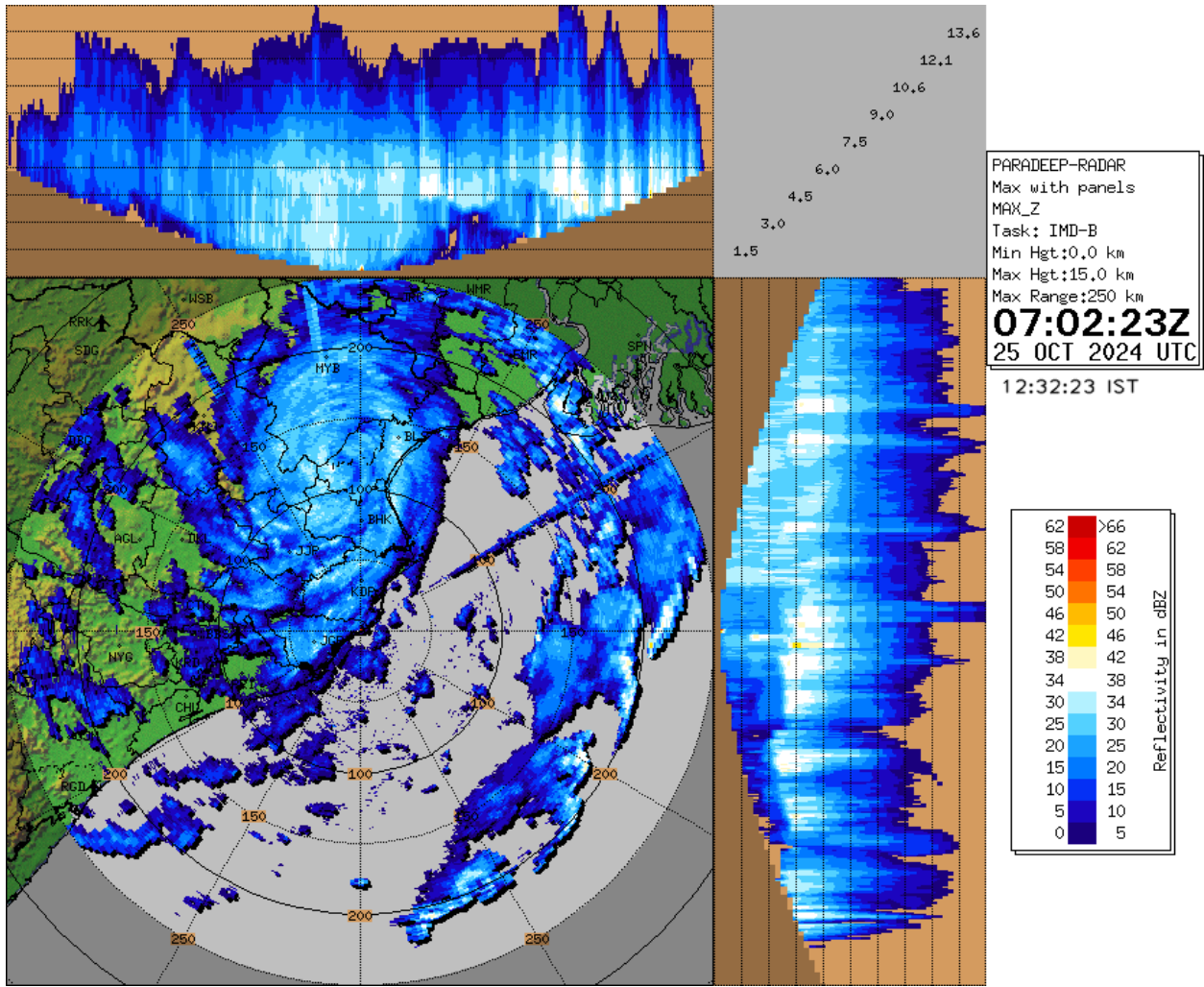
<b>Diamond Harbour</b>	<b>93</b>
<b>Kalaikunda</b>	<b>91</b>
<b>Sagar Island</b>	<b>90</b>
<b>AMFU KHARAGPUR</b>	<b>88</b>
<b>Haldia</b>	<b>80</b>
<b>MOHANPUR</b>	<b>69</b>
<b>Jhargram</b>	<b>67</b>
<b>Uluberia</b>	<b>65</b>
<b>AMFUKAKDWIP</b>	<b>58</b>
<b>MEDINIPUR</b>	<b>56</b>
<b>Midnapore City</b>	<b>52</b>
<b>Alipore</b>	<b>43</b>
<b>LALGARH</b>	<b>42</b>
<b>Digha</b>	<b>37</b>
<b>FULBERIA</b>	<b>35</b>
<b>Basirhat</b>	<b>30</b>
<b>Contai</b>	<b>29</b>

# SATELLITE IMAGERY

SAT : INSAT-3DR IMG  
IMG\_TIR1\_TEMP 10.8 um  
LIC Mercator

25-10-2024/(0645 to 0712) GMT  
25-10-2024/(1215 to 1242) IST

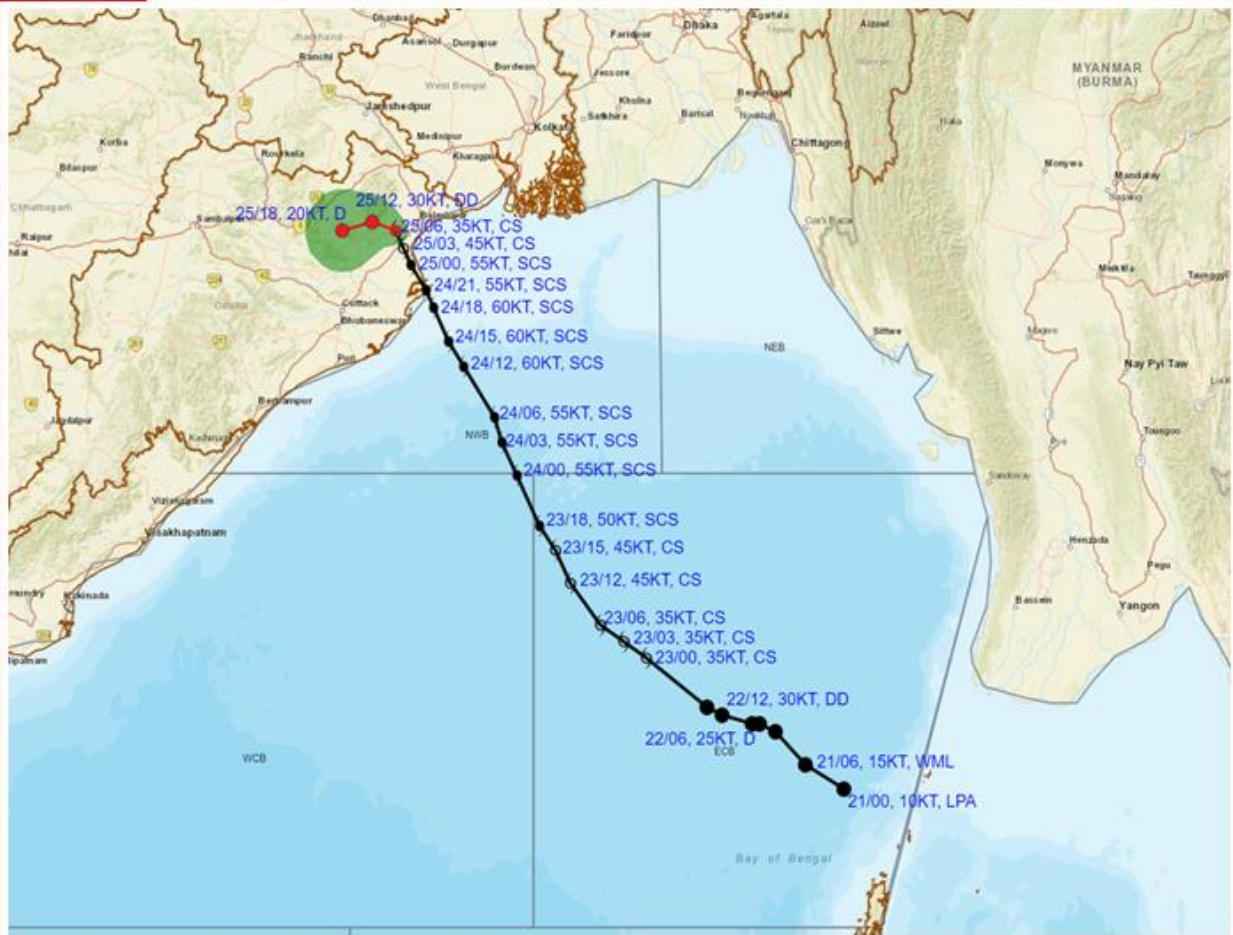




RADAR OBSERVATIONS (MAX\_Z) OF DWR PARADIP



**OBSERVED AND FORECAST TRACK ALONGWITH CONE OF UNCERTAINTY OF CYCLONIC STORM 'DANA' OVER NORTH COASTAL ODISHA BASED ON 0600 UTC (1130 Hrs. IST) OF 25<sup>th</sup> OCTOBER 2024**



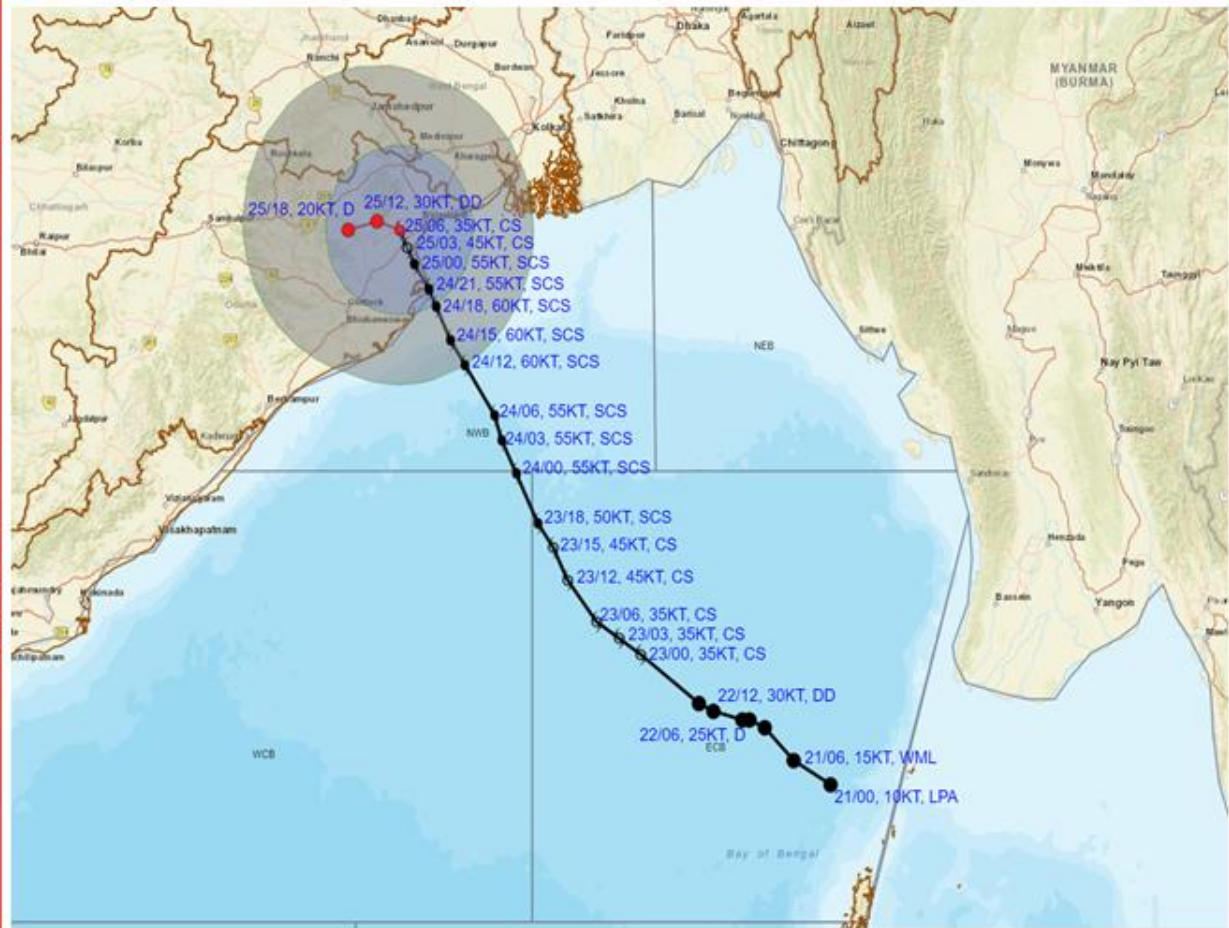
DATE/TIME : IN UTC  
 IST : UTC + 0530  
 KT : NAUTICAL MILE S/HOUR = 1.85 KM/HOUR  
 LPA : LOW PRESSURE AREA  
 WML : WELL MARKED LOW PRESSURE AREA  
 D : DEPRESSION (17-27 KT)  
 DD : DEEP DEPRESSION (28-33 KT)  
 CS : CYCLONIC STORM (34-47 KT)  
 SCS : SEVERE CYCLONIC STORM (48-63 KT)  
 VSCS : VERY SEVERE CYCLONIC STORM (64-89 KT)  
 ESCS : EXTREMELY SEVERE CYCLONIC STORM (90-119 KT)  
 SuCS : SUPER CYCLONIC STORM ( $\geq 120$  KT)

LESS THAN 34 KT  
 34-47 KT  
 $\geq 48$  KT  
 OBSERVED TRACK  
 FORECAST TRACK  
 CONE OF UNCERTAINTY

Forecast	DISTANCE (KM) AND DIRECTION FROM STATIONS	
Date and Time (UTC)	BHADRAK	DHAMARA
25.10.24/0600	40, NNE	70, NNW



**OBSERVED AND FORECAST TRACK ALONGWITH QUADRANT WIND DISTRIBUTION OF CYCLONIC STORM 'DANA' OVER NORTH COASTAL ODISHA BASED ON 0600 UTC (1130 Hrs. IST) OF 25<sup>th</sup> OCTOBER 2024**



DATE/TIME : IN UTC  
 IST : UTC + 0530  
 KT : NAUTICAL MILE/HOUR = 1.85 KM/HOUR  
 LPA : LOW PRESSURE AREA  
 WML : WELL MARKED LOW PRESSURE AREA  
 D : DEPRESSION (17-27 KT)  
 DD : DEEP DEPRESSION (28-33 KT)  
 CS : CYCLONIC STORM (34-47 KT)  
 SCS : SEVERE CYCLONIC STORM (48-63 KT)  
 VSCS : VERY SEVERE CYCLONIC STORM (64-89 KT)  
 ESCS : EXTREMELY SEVERE CYCLONIC STORM (90-119 KT)  
 SuCS : SUPER CYCLONIC STORM (≥120 KT)

● LESS THAN 34 KT  
 ○ 34-47 KT  
 ● ≥ 48 KT  
 — OBSERVED TRACK  
 — FORECAST TRACK  
 ○ CONE OF UNCERTAINTY  
 AREA OF MAXIMUM SUSTAINED WIND SPEED:  
 ■ 28-33 KT (52-61 KMPH)  
 ■ 34-49 KT (62-91 KMPH)  
 ■ 50-63 KT (92-117 KMPH)  
 ■ ≥ 64 KT (≥118 KMPH)

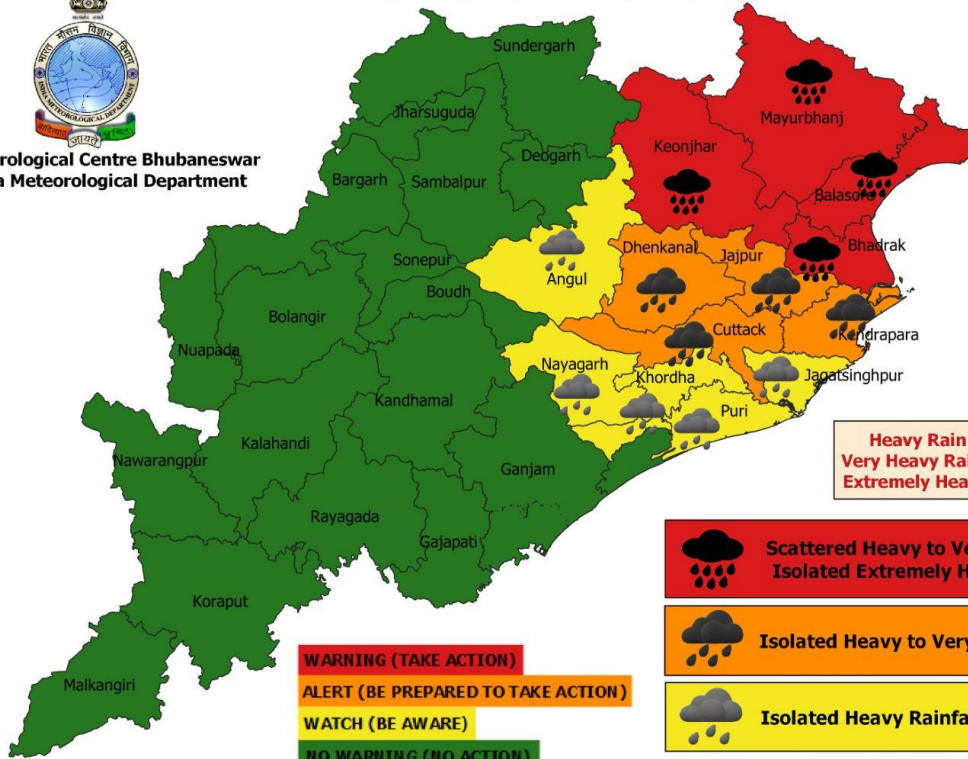
**IMPACT OVER THE SEA**

MSW (knot/kmph)	Impact	Action
28-33 (52-61)	Very rough seas	Total suspension of fishing operations
34-49 (62-91)	High to very high seas	Total suspension of fishing operations
50-63 (92-117)	Very high seas	Total suspension of fishing operations
≥ 64 (≥118)	Phenomenal	Total suspension of fishing operations



Meteorological Centre Bhubaneswar  
India Meteorological Department

### Warning Day-1 (Valid upto 0830 hrs IST of 26.10.2024)



Heavy Rain (7 cm - 11 cm)  
 Very Heavy Rain (12 cm - 20 cm)  
 Extremely Heavy Rain (> 20 cm)

- Scattered Heavy to Very Heavy with Isolated Extremely Heavy Rainfall
- Isolated Heavy to Very Heavy Rainfall
- Isolated Heavy Rainfall

**WARNING (TAKE ACTION)**  
**ALERT (BE PREPARED TO TAKE ACTION)**  
**WATCH (BE AWARE)**  
**NO WARNING (NO ACTION)**

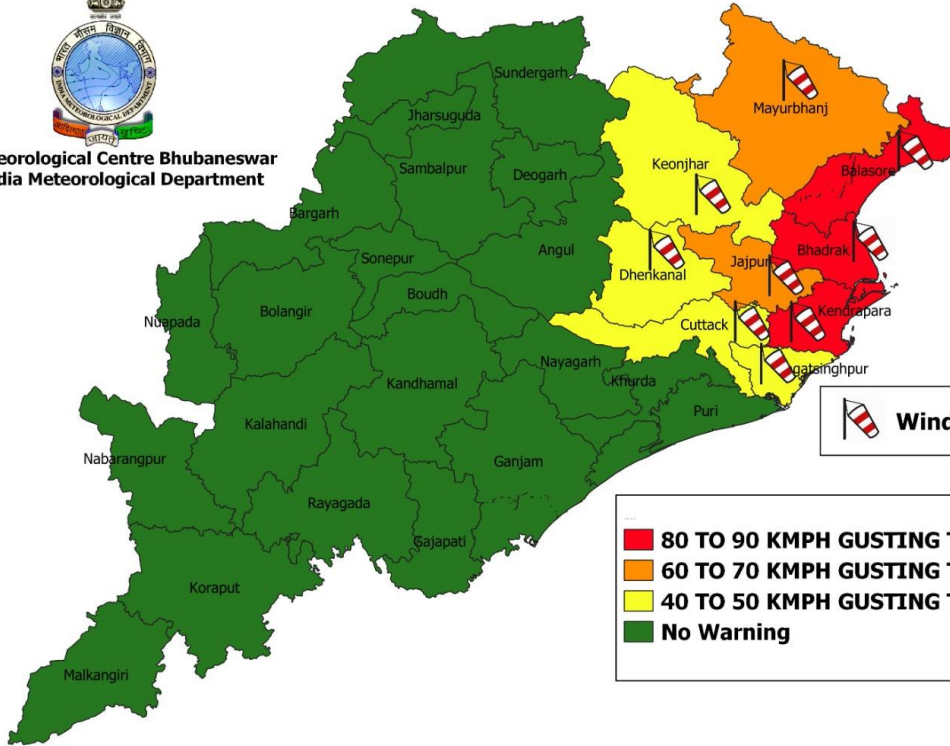
Meteorological Centre Bhubaneswar

Date: 25/10/2024



Meteorological Centre Bhubaneswar  
India Meteorological Department

### Wind Warning for 25.10.2024



**Wind Warning**

**80 TO 90 KMPH GUSTING TO 100 KMPH**  
**60 TO 70 KMPH GUSTING TO 80 KMPH**  
**40 TO 50 KMPH GUSTING TO 60 KMPH**  
**No Warning**

Meteorological Centre Bhubaneswar

Date: 25/10/2024