



**India Meteorological Department  
(Ministry of Earth Sciences)**

**HOURLY UPDATE ON SEVERE CYCLONIC STORM “DANA”**

**BULLETIN NO. 8**

DATE: 25-10-2024

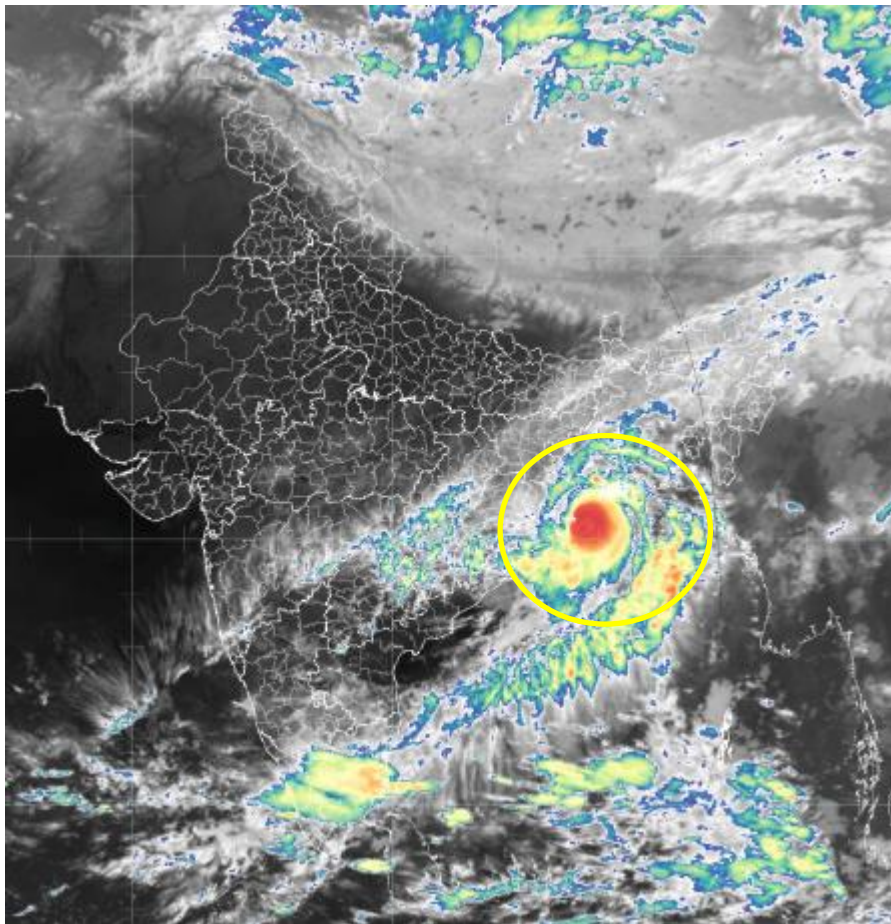
TIME OF ISSUE: 0130 HRS IST

<b>DATE/TIME (IST) OF OBSERVATION</b>	<b>BASED ON 25-10-2024 (0030 HRS IST)</b>
LOCATION LATITUDE/LONGITUDE	THE SEVERE CYCLONIC STORM “DANA” (PRONOUNCED AS DANA) OVER NORTHWEST BAY OF BENGAL MOVED NORTH-NORTHWESTWARDS WITH A SPEED OF 15 KMPH DURING PAST 06 HOURS AND LAY CENTRED AT 0030 HRS IST OF TODAY, THE 25TH OCTOBER, OVER THE SAME REGION, NEAR LATITUDE 20.60° N AND LONGITUDE 87.05°E, ABOUT 50 KM NORTHEAST OF PARADIP (ODISHA), 30 KM SOUTHEAST OF DHAMARA (ODISHA) AND 160 KM SOUTHWEST OF SAGAR ISLAND (WEST BENGAL).
CURRENT INTENSITY WIND SPEED	SEVERE CYCLONIC STORM 100-110 KMPH GUSTING TO 120 KMPH
FORECAST	IT IS VERY LIKELY TO CONTINUE TO MOVE NORTH-NORTHWESTWARDS AND CROSS NORTH ODISHA COAST CLOSE TO BHITARKANIKA AND DHAMARA (ODISHA) DURING NEXT 2 HOURS AS A SEVERE CYCLONIC STORM WITH A WIND SPEED OF 100-110 KMPH GUSTING 120 KMPH. <b><i>LANDFALL PROCESS CONTINUES AND THE FORWARD SECTOR OF THE WALL CLOUD REGION CONTINUES TO ENTER INTO LAND. THE LANDFALL PROCESS WOULD CONTINUE TILL TODAY, THE 25TH OCTOBER MORNING.</i></b> THE SYSTEM IS UNDER CONTINUOUS SURVEILLANCE OF THE DOPPLER WEATHER RADAR AT PARADIP.

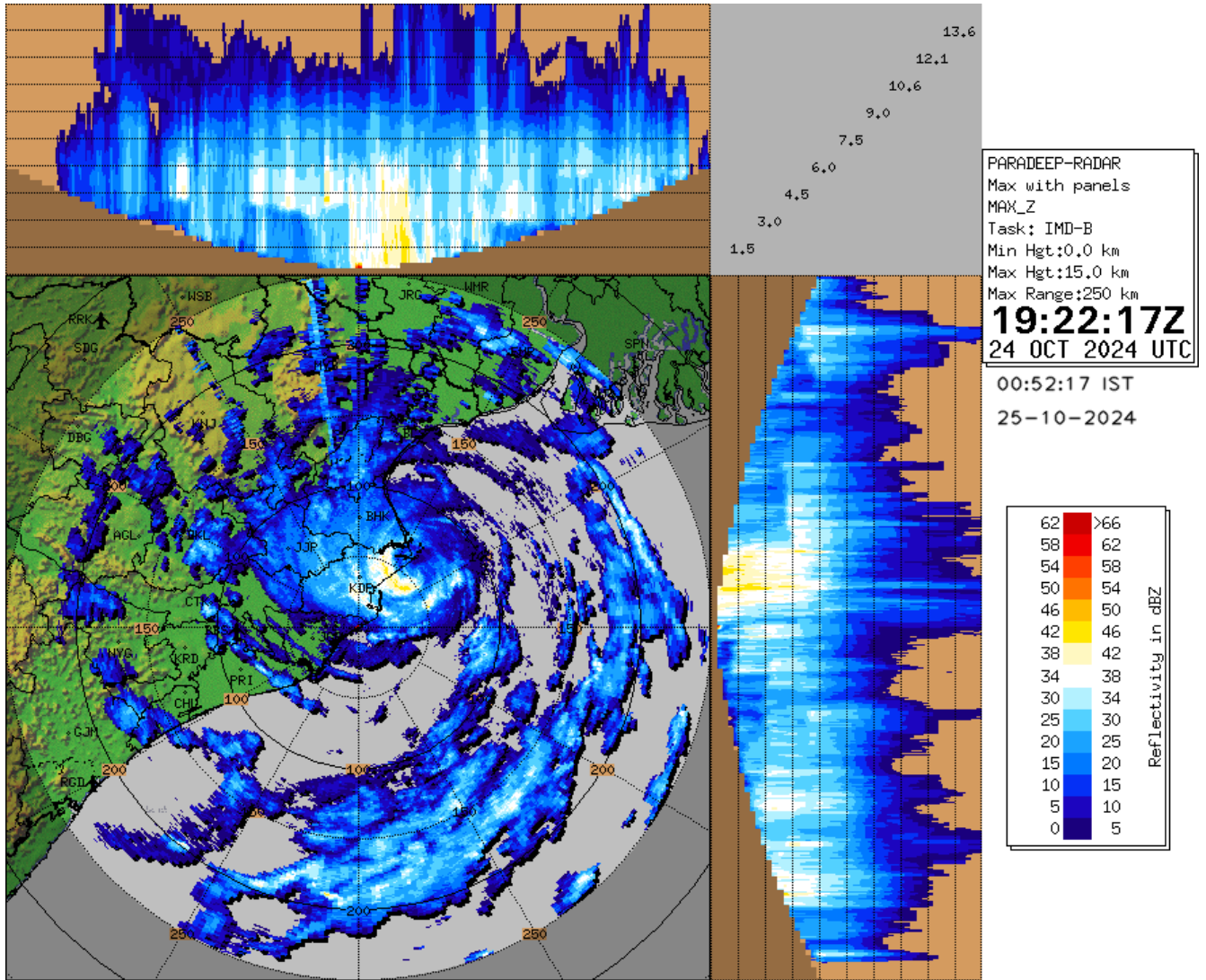
**OBSERVED WEATHER:**

STATION	RAINFALL (MM) (0830-2330 HRS IST)	WINDSPEED (KNOTS) AT 2330 HRS IST	STATION	RAINFALL (0830-2330 HRS IST)	WINDSPEED (KNOTS) AT 2330 HRS IST
BHUBANESWAR	15.1	9/NWLY	HALDIA	24.0	6/NELY
BALASORE	35.8	12/NELY	DIGHA	36.0	10/NELY
CHANDBALI	44.2	11/NWLY	DUMDUM	8	8/NELY
PARADIP	44.9	12/NWLY	DIAMOND HARBOUR	18	4/ENELY
PURI	16.3	10/NNWLY			

**SATELLITE IMAGERY**

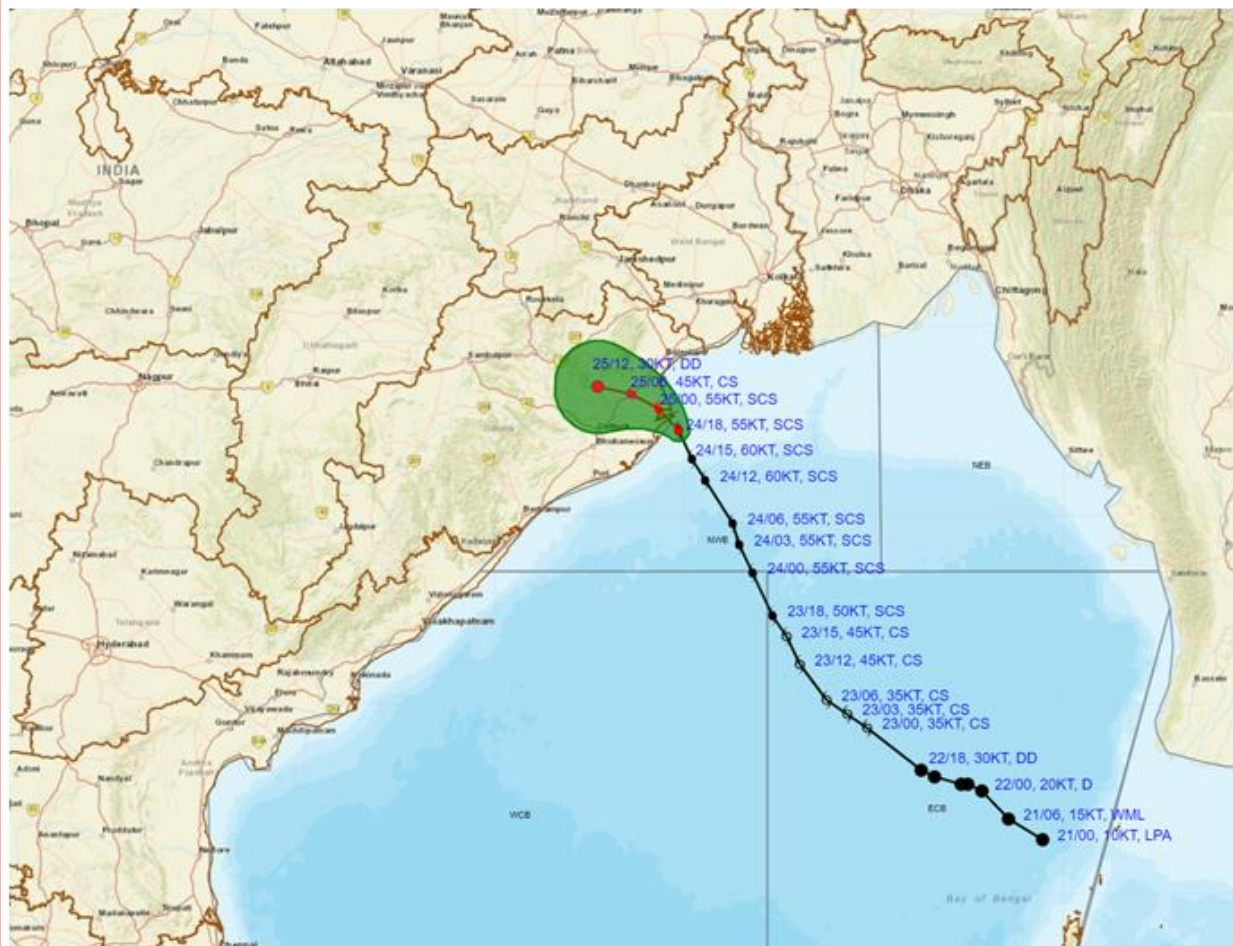


# RADAR OBSERVATIONS (MAX\_Z) OF DWR PARADIP





**OBSERVED AND FORECAST TRACK ALONGWITH CONE OF UNCERTAINTY OF SEVERE CYCLONIC STORM 'DANA' OVER NORTHWEST BAY OF BENGAL BASED ON 1800 UTC (2330 Hrs. IST) OF 24<sup>th</sup> OCTOBER 2024**



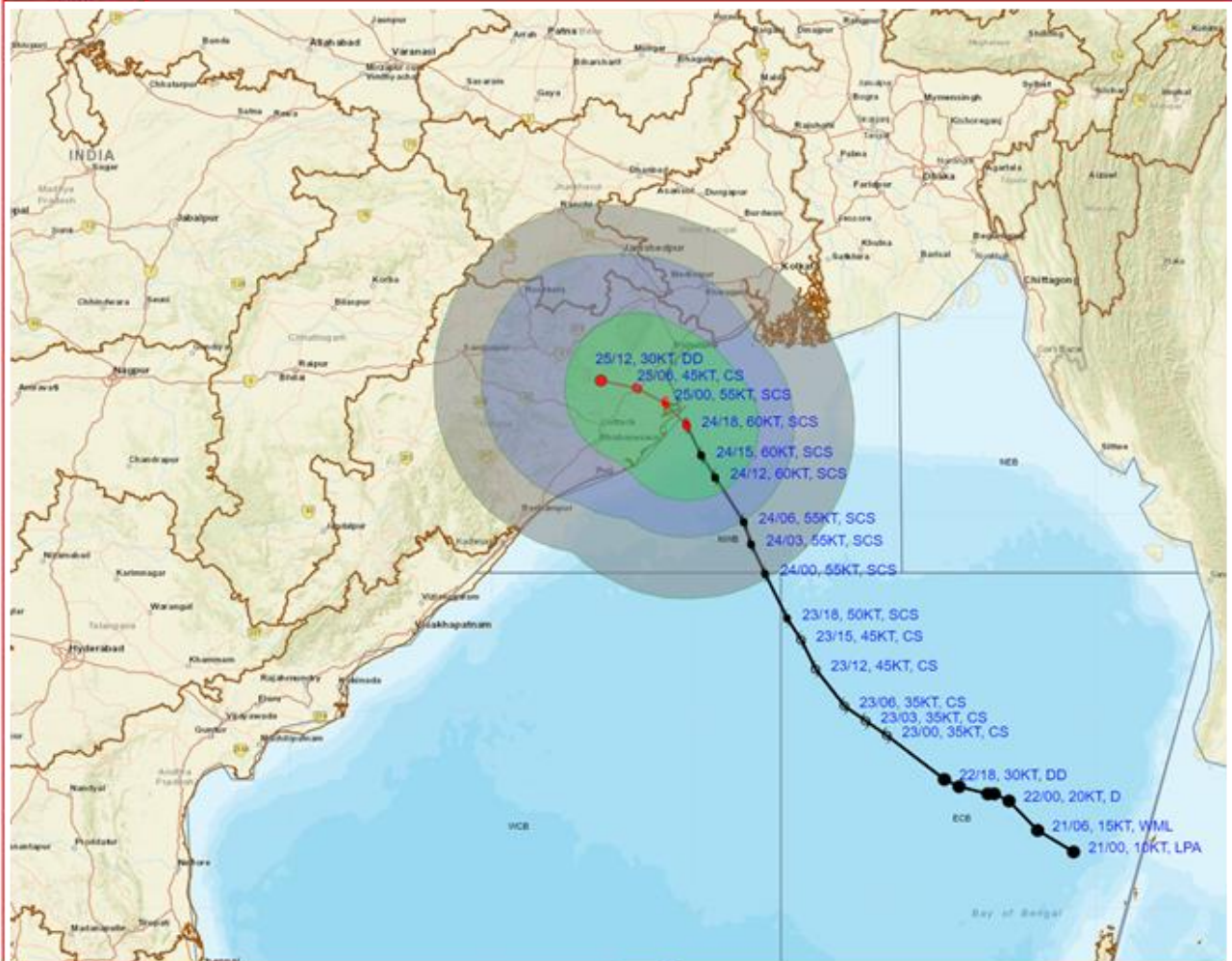
DATE/TIME : IN UTC  
 IST : UTC + 0530  
 KT : NAUTICAL MILE / HOUR = 1.85 KM / HOUR  
 LPA : LOW PRESSURE AREA  
 WML : WELL MARKED LOW PRESSURE AREA  
 D : DEPRESSION (17-27 KT)  
 DD : DEEP DEPRESSION (28-33 KT)  
 CS : CYCLONIC STORM (34-47 KT)  
 SCS : SEVERE CYCLONIC STORM (48-63 KT)  
 VSCS : VERY SEVERE CYCLONIC STORM (64-89 KT)  
 ESCS : EXTREMELY SEVERE CYCLONIC STORM (90-119 KT)  
 SuCS : SUPER CYCLONIC STORM (≥120 KT)

● LESS THAN 34 KT  
 ○ 34-47 KT  
 ○ ≥ 48 KT  
 — OBSERVED TRACK  
 — FORECAST TRACK  
 ▲ CONE OF UNCERTAINTY

Forecast	DISTANCE (KM) AND DIRECTION FROM STATIONS		
Date and Time (UTC)	PARADIP (CWR)	DHAMARA	SAGAR ISLAND
24.10.24/1800	50, ENE	40, SSE	160, SW



**OBSERVED AND FORECAST TRACK ALONGWITH QUADRANT WIND DISTRIBUTION OF SEVERE CYCLONIC STORM 'DANA' OVER NORTHWEST BAY OF BENGAL BASED ON 1800 UTC (2330 Hrs. IST) OF 24<sup>th</sup> OCTOBER 2024**



**DATE/TIME** : IN UTC  
**IST** : UTC + 0530  
**KT** : NAUTICAL MILE S/HOUR = 1.85 KM/HOUR  
**LPA** : LOW PRESSURE AREA  
**WML** : WELL MARKED LOW PRESSURE AREA  
**D** : DEPRESSION (17-27 KT)  
**DD** : DEEP DEPRESSION (28-33 KT)  
**CS** : CYCLONIC STORM (34-47 KT)  
**SCS** : SEVERE CYCLONIC STORM (48-63 KT)  
**VSCS** : VERY SEVERE CYCLONIC STORM (64-89 KT)  
**ESCS** : EXTREMELY SEVERE CYCLONIC STORM (90-119 KT)  
**SuCS** : SUPER CYCLONIC STORM (≥120 KT)

● LESS THAN 34 KT  
 ○ 34-47 KT  
 ○ ≥ 48 KT  
 — OBSERVED TRACK  
 — FORECAST TRACK  
 ○ CONE OF UNCERTAINTY  
**AREA OF MAXIMUM SUSTAINED WIND SPEED:**  
 ■ 28-33 KT (52-61 KMPH)  
 ■ 34-49 KT (62-91 KMPH)  
 ■ 50-63 KT (92-117 KMPH)  
 ■ ≥ 64 KT (≥118 KMPH)

**IMPACT OVER THE SEA**

MSW (knot/kmph)	Impact	Action
28-33 (52-61)	Very rough seas	Total suspension of fishing operations
34-49 (62-91)	High to very high seas	Total suspension of fishing operations
50-63 (92-117)	Very high seas	Total suspension of fishing operations
≥ 64 (≥118)	Phenomenal	Total suspension of fishing operations