



**India Meteorological Department  
(Ministry of Earth Sciences)**

**HOURLY UPDATE ON CYCLONIC STORM “REMAL”**

**BULLETIN NO. 02**

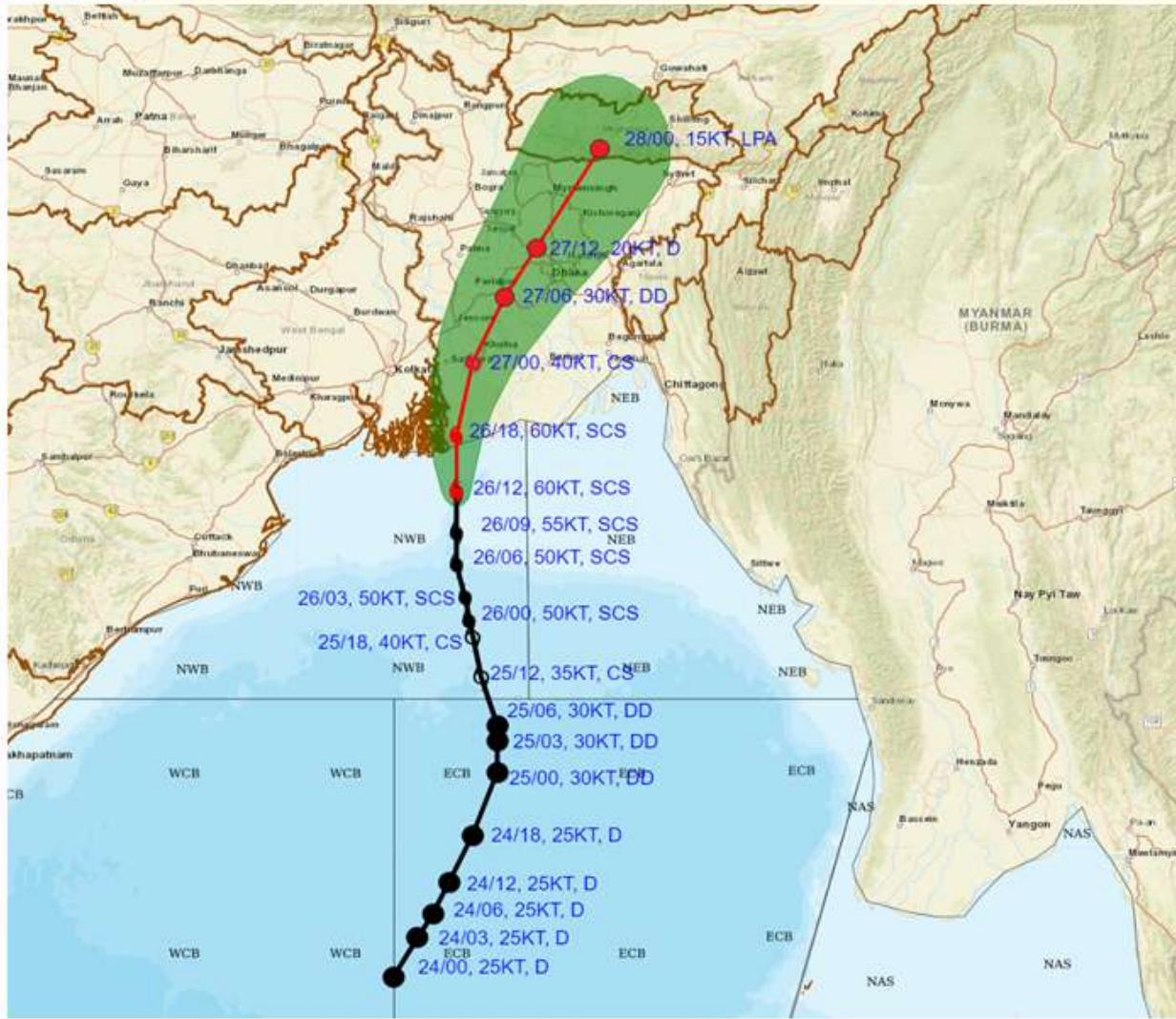
DATE: 26-05-2024

TIME OF ISSUE: 1950 HRS IST

<b>DATE/TIME(IST) OF OBSERVATION</b>	<b>BASED ON 26-05-2024 (1830 HRS IST)</b>
<b>LOCATION LATITUDE/LONGITUDE</b>	<p>The Severe Cyclonic Storm “Remal” (pronounced as “Re-Mal”) over the North Bay of Bengal moved nearly northwards, with a speed of 16 kmph during past 06 hours and lay centered at 1730 hrs IST of today, the 26th May, 2024 over the same region near latitude 21.15°N and longitude 89.2°E about 125 km east-southeast of Sagar Islands (West Bengal), 140 km southwest of Khepupara (Bangladesh), 135 km south-southeast of Canning (West Bengal) and 155 km south-southwest of Mongla (Bangladesh).</p> <p><b>The outer cloud band lies over coastal areas of Bangladesh &amp; West Bengal, India. The landfall process will commence in next few hours.</b></p>
<b>CURRENT INTENSITY NEAR CENTRE</b>	<b>110-120 Kmph Gusting To 135 Kmph.</b>
<b>OBSERVATIONS (1830 HOURS IST)</b>	<b>RAINFALL (since 0830 IST in mm):-</b> Digha-43, Haldia-33.
<b>FORECAST MOVEMENT, INTENSITY AND LANDFALL</b>	It is very likely to continue to move nearly northwards and cross Bangladesh and adjoining West Bengal coasts between Sagar Island and Khepupara, close to southwest of Mongla (Bangladesh) by midnight of today, the 26 <sup>th</sup> may 2024 as a severe cyclonic storm with maximum sustained wind speed of 110-120 kmph gusting to 135 kmph.
<b>FORECAST WIND</b>	❖ <b>Gale wind speed reaching 90-100 kmph gusting to 110 kmph is prevailing</b> along & off Bangladesh and West Bengal & adjoining North Odisha coasts and likely to become <b>110-120 kmph gusting to 135 kmph</b> during next 2 hours.



**FORECAST TRACK ALONGWITH CONE OF UNCERTAINTY IN ASSOCIATION WITH SEVERE CYCLONIC STORM 'REMAL' OVER NORTH BAY OF BENGAL BASED ON 1200 UTC (1730 IST) OF 26<sup>TH</sup> MAY 2024.**



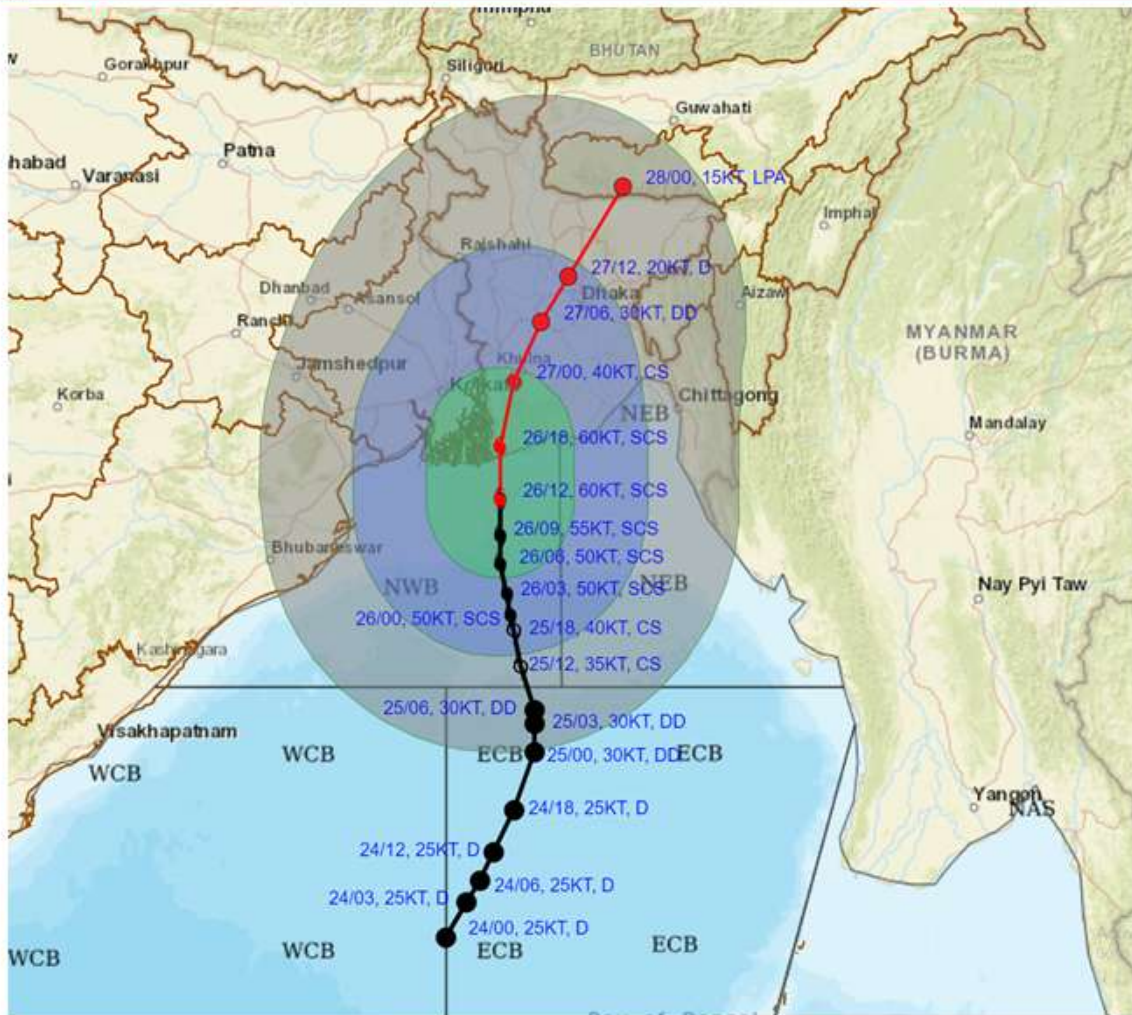
DATE/TIME IN UTC  
 IST=UTC + 0530  
 L: LOW PRESSURE AREA  
 WML: WELL MARKED LOW PRESSURE AREA  
 D: DEPRESSION (17-27 KT)  
 DD: DEEP DEPRESSION (28-33 KT)  
 CS: CYCLONIC STORM (34-47 KT)  
 SCS: SEVERE CYCLONIC STORM (48-63KT)  
 VSCS: VERY SEVERE CYCLONIC STORM (64-89 KT)  
 ESCS: EXTREMELY SEVERE CYCLONIC STORM (90-119 KT)  
 SuCS: SUPER CYCLONIC STORM ( $\geq$  120 KT)

- LESS THAN 34 KT
- 34-47 KT
- $\geq$  48 KT
- OBSERVED TRACK
- FORECAST TRACK
- CONE OF UNCERTAINTY

Forecast Date and Time (UTC)	DISTANCE (KM) AND DIRECTION FROM STATIONS			
	Canning	Sagar Island	Khepupara	Mongla
26.05.24/0900	190, SSE	160, SE	180, SSW	220, S
26.05.24/1200	140, SSE	130, ESE	140, SW	160, S
26.05.24/1800	80, SE	110, E	100, WSW	90, SSW



**FORECAST TRACK ALONGWITH QUADRANT WIND DISTRIBUTION IN ASSOCIATION WITH SEVERE CYCLONIC STORM 'REMAL' OVER NORTH BAY OF BENGAL BASED ON 1200 UTC (1730 IST) OF 26TH MAY 2024.**



DATE/TIME IN UTC

IST=UTC + 0530

L: LOW PRESSURE AREA

WML: WELL MARKED LOW PRESSURE AREA

D: DEPRESSION (17-27 KT)

DD: DEEP DEPRESSION (28-33 KT)

CS: CYCLONIC STORM (34-47 KT)

SCS: SEVERE CYCLONIC STORM (48-63KT)

VSCS: VERY SEVERE CYCLONIC STORM (64-89 KT)

ESCS: EXTREMELY SEVERE CYCLONIC STORM (90-119 KT)

SuCS: SUPER CYCLONIC STORM (≥ 120 KT)

● LESS THAN 34 KT

○ 34-47 KT

● ≥ 48 KT

— OBSERVED TRACK

— FORECAST TRACK

○ CONE OF UNCERTAINTY

AREA OF MAXIMUM SUSTAINED WIND SPEED:

■ 28-33 KT (52-61 KMPH)

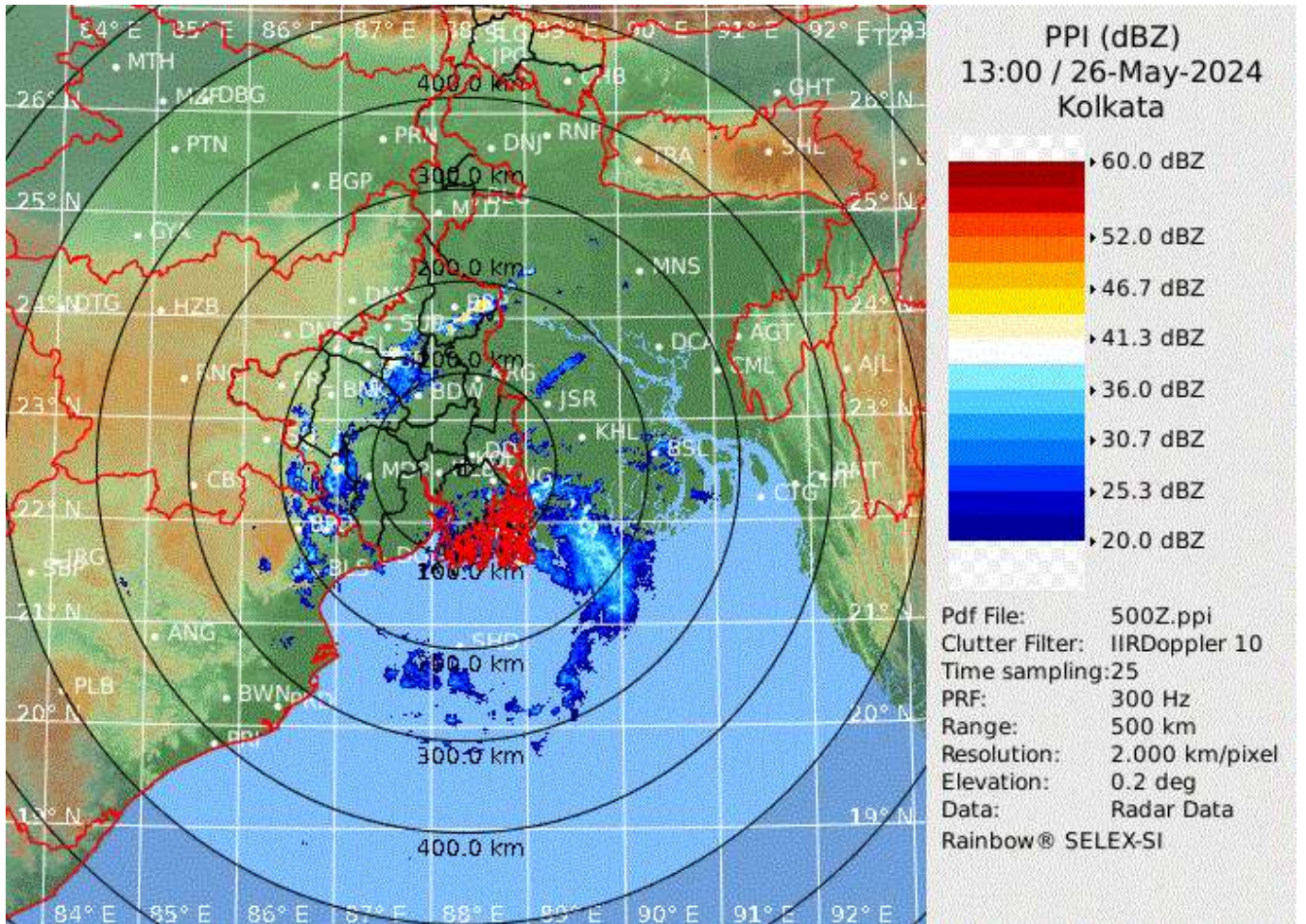
■ 34-49 KT (62-91 KMPH)

■ 50-63 KT (92-117 KMPH)

■ ≥ 64 (≥118 KMPH)

**IMPACT OVER THE SEA**

MSW (knot/kmph)	Impact	Action
28-33 (52-61)	Very rough seas	Total suspension of fishing operations
34-49 (62-91)	High to very high seas	Total suspension of fishing operations
50-63 (92-117)	Very high seas	Total suspension of fishing operations
≥ 64 (≥118)	Phenomenal	Total suspension of fishing operations



**KOLKATA RADAR IMAGERY AT 1830 HOURS IST of 26<sup>th</sup> MAY 2024**