

## List of Cyclones and Depressions for the year 2025 over NIO and India region

1	Depression over Eastcentral Arabian Sea and adjoining south Konkan	24 May – 25 May
2	Deep Depression Over Northwest Bay of Bengal off West Bengal-Bangladesh Coasts	29 May – 30 May
3	Depression over southeast Gangetic West Bengal and adjoining Bangladesh	14 July – 15 July
4	Depression over central parts of north Rajasthan	15 July – 16 July
5	Depression over Southeast Uttar Pradesh	17 July – 20 July
6	Depression over Northwest Bay of Bengal	25 July – 27 July
7	Depression over northwest & adjoining westcentral Bay of Bengal and north Andhra Pradesh -south Odisha coasts	18 Aug – 19 Aug
8	Land Deep Depression over Southwest Rajasthan and neighbourhood	06 Sept – 10 Sept
9	Depression over northwest and adjoining westcentral Bay of Bengal	26 Sept - 28 Sept
10	Deep Depression over westcentral Bay of Bengal	01 Oct – 03 Oct
11	Severe Cyclonic Storm Shakhti over northeast Arabian Sea.	01 Oct – 07 Oct
12	Depression over Southeast Arabian Sea	22 Oct - 01 Nov
13	Severe Cyclonic Storm Montha over westcentral BoB	25 Oct - 30 Oct
14	Cyclonic Storm SENYAR over strait of Malacca	25 Nov – 27 Nov
15	Cyclonic Storm “Ditwah” over Southwest Bay of Bengal and adjoining areas of southeast Sri Lanka & Equatorial Indian Ocean	26 Nov – 03 Dec

**kt: Knot (nautical mile per hour), 1 kt=1.85 kmph, Lat.: Latitude, long.: Longitude, ECP: Estimated central pressure, ΔP: Pressure drop at centre, C.I. No.: Current intensity number, MSW: maximum sustained wind speed, Po: Pressure of outermost closed isobar**

**Table 1: Best track positions and other parameters of the Depression over Eastcentral Arabian Sea and adjoining south Konkan coast during 24<sup>th</sup> May – 25<sup>th</sup> May, 2025**

Date	Time (UTC)	Lat.	Long.	C.I. No.	ECP (hPa)	$\Delta P$ (hPa)	MSW (kt)	Grade
24.05.2025	0000	17.0	73.0	1.5	998	3	25	D
	0300	17.0	73.2	1.5	998	3	25	D
	0600	17.0	73.3	1.5	998	3	25	D
	Crossed South Konkan Coast near Ratnagiri between 0600-0700 UTC (between 1130 hrs IST and 1230 hrs IST) as a depression with maximum sustained wind speed of 25 knots.							
	1200	17.2	74.3	-	998	4	25	D
	1800	17.4	75.3	-	998	4	25	D
25.05.2025	0000	Weakened into a well-marked low-pressure area over south Madhya Maharashtra and adjoining areas of Marathwada & North Interior Karnataka.						

**Table 2: Best track positions and other parameters of the Deep Depression Over Northwest Bay of Bengal off West Bengal-Bangladesh Coasts during 29<sup>th</sup> May – 30<sup>th</sup> May, 2025**

Date	Time (UTC)	Lat. (°N)	Long.(°E)	C.I. No.	ECP (hpa)	ΔP (hPa)	MSW (kt)	Category
29.05.2025	0000	20.8	88.3	1.5	988	4	25	D
	0300	21.3	88.3	2.0	986	5	30	DD
	Crossed West Bengal – Bangladesh coasts between Sagar Island & Khepupara (Bangladesh) close to Raidighi (West Bengal) during 0500-0600 UTC as a deep depression with maximum sustained wind speed of 30 knots							
	0600	22.0	88.4	-	986	5	30	DD
	1200	22.2	88.6	-	987	5	30	DD
	1800	23.0	89.2	-	988	5	30	DD
30.05.2025	0000	24.1	89.4	-	990	4	25	D
	0300	24.3	89.6	-	992	3	20	D
	0600	25.1	90.2	-	992	3	20	D
	1200	Weakened into a well-marked low-pressure area over Meghalaya and neighbourhood						

**Table 3: Best track positions and other parameters of the Depression over southeast Gangetic West Bengal and adjoining Bangladesh during 14<sup>th</sup> – 15<sup>th</sup> July, 2025**

Date	Time (UTC)	Lat.	Long.	C.I. No.	ECP (hPa)	$\Delta P$ (hPa)	MSW (kt)	Grade
14.07.2025	0600	23.0	88.8	-	996	3	20	D
	1200	23.3	88.4	-	996	3	20	D
	1800	23.5	88.0	-	996	3	20	D
15.07.2025	0000	24.0	86.7	-	996	3	20	D
	0300	Weakened into a well-marked low-pressure area over north Jharkhand and adjoining south Bihar						

**Table 4: Best track positions and other parameters of the Depression over central parts of north Rajasthan during 15<sup>th</sup> – 16<sup>th</sup> July, 2025**

Date	Time (UTC)	Lat.	Long.	C.I. No.	ECP (hPa)	$\Delta P$ (hPa)	MSW (kt)	Grade
15.07.2025	0300	27.4	75.4	-	993	3	20	D
	0600	27.7	75.0	-	993	3	20	D
	1200	29.0	73.7	-	994	3	20	D
	1800	29.2	73.5	-	995	3	20	D
16.07.2025	0000	Weakened into a well-marked low-pressure area over northwest Rajasthan.						

**Table 5: Best track positions and other parameters of the Depression over Southeast Uttar Pradesh during 17<sup>th</sup> – 20<sup>th</sup> July, 2025**

Date	Time (UTC)	Lat.(°N)	Long.(°E)	C.I. No.	ECP (hPa)	$\Delta P$ (hPa)	MSW (kt)	Category
17.07.2025	0000	25.2	81.8	-	993	4	25	D
	0300	25.2	81.5	-	993	4	25	D
	0600	25.3	81.2	-	993	4	25	D
	1200	25.6	80.3	-	993	4	25	D
	1800	25.8	79.8	-	993	4	25	D
18.07.2025	0000	26.3	79.0	-	993	4	25	D
	0300	26.4	78.5	-	993	4	25	D
	0600	26.4	78.0	-	993	4	25	D
	1200	27.0	77.2	-	993	4	25	D
	1800	27.2	76.5	-	993	4	25	D
19.07.2025	0000	27.4	75.1	-	993	4	25	D
	0300	27.5	74.6	-	993	3	20	D
	0600	27.5	74.2	-	993	3	20	D
	1200	27.5	73.7	-	993	3	20	D
	1800	27.5	73.0	-	993	3	20	D
20.07.2025	0000	Weakened into a well-marked low-pressure area over west Rajasthan and adjoining Pakistan						

**Table 6: Best track positions and other parameters of the Depression over Northwest Bay of Bengal during 25<sup>th</sup> – 27<sup>th</sup> July 2025**

Date	Time (UTC)	Lat.(°N)	Long.(°E)	C.I. No.	ECP (hPa)	ΔP (hPa)	MSW (kt)	Category
25.07.2025	0000	21.4	89.5	1.5	988	4	25	D
	Crossed West Bengal & adjoining Bangladesh coasts between 0200 and 0300 UTC of 25 <sup>th</sup> July							
	0300	21.7	88.8	-	988	4	25	D
	0600	22.0	88.4	-	988	4	25	D
	1200	22.6	87.4	-	988	4	25	D
	1800	23.0	86.6	-	988	4	25	D
26.07.2025	0000	23.3	85.0	-	988	4	25	D
	0300	23.3	84.0	-	990	3	20	D
	0600	23.3	82.3	-	990	3	20	D
	1200	23.3	81.7	-	990	3	20	D
	1800	23.3	81.0	-	992	3	20	D
27.07.2025	0000	Depression weakened into a Well-Marked Low-Pressure Area over northwest Madhya Pradesh						

**Table 7: Best track positions and other parameters of the Depression over northwest & adjoining westcentral Bay of Bengal and north Andhra Pradesh -south Odisha coasts during 18<sup>th</sup> August – 19<sup>th</sup> August, 2025**

Date	Time (UTC)	Lat.	Long.	C.I. No.	ECP (hPa)	ΔP (hPa)	MSW (kt)	Grade
18.08.2025	1200	18.9	85.0	1.5	996	3	20	D
	1800	19.0	84.9	1.5	996	3	20	D
	Crossed south Odisha coast near 19.3°N & 84.8°E close to Gopalpur during early morning of 19th August.							
19.08.2025	0000	19.3	84.8	-	996	3	20	D
	0300	19.8	84.0	-	996	3	20	D
	0600	20.0	83.3	-	996	3	20	D
	1200	Weakened into a well-marked low-pressure area over central parts of Chhattisgarh & neighbourhood						

**Table 8: Best track positions and other parameters of the Land Deep Depression over Southwest Rajasthan and neighbourhood during 6<sup>th</sup> – 10<sup>th</sup> Sep, 2025**

Date	Time (UTC)	Lat.	Long.	C.I. No.	ECP (hPa)	$\Delta P$ (hPa)	MSW (kt)	Grade
06.09.2025	1800	25.0	72.5	-	998	4	25	D
07.09.2025	0000	24.3	72.2	-	998	4	25	D
	0300	24.2	71.8	-	998	4	25	D
	0600	24.3	71.4	-	996	5	30	DD
	1200	24.5	71.2	-	995	6	30	DD
	1800	24.6	71.0	-	995	6	30	DD
08.09.2025	0000	24.8	70.7	-	995	6	30	DD
	0300	25.0	70.5	-	995	6	30	DD
	0600	25.3	70.2	-	995	6	30	DD
	1200	25.8	69.5	-	995	6	30	DD
	1800	25.9	69.0	-	997	4	25	D
09.09.2025	0000	25.8	68.7	-	998	4	25	D
	0300	25.4	68.4	-	998	4	25	D
	0600	25.2	68.2	-	999	4	25	D
	1200	25.0	67.7	-	999	4	25	D
	1800	24.9	67.1	-	999	4	25	D
	Emerged into northeast Arabian Sea around 2100 UTC of 9 <sup>th</sup> September							
10.09.2025	0000	24.8	66.3	1.5	1000	4	25	D
	0300	24.8	65.8	1.5	1000	4	25	D
	0600	24.8	65.3	1.5	1000	4	25	D
	1200	24.8	64.4	1.5	1000	4	25	D
	1800	24.8	63.5	1.5	1001	3	20	D
11.09.2025	0000	Weakened into a well-marked low-pressure area over northwest Arabian Sea and adjoining southwest Pakistan						

**Table 9: Best track of Depression over northwest and adjoining westcentral Bay of Bengal off south Odisha-north Andhra Pradesh coasts during 26<sup>th</sup> - 28<sup>th</sup> September, 2025**

Date	Time (UTC)	Lat.	Long.	C.I. No.	ECP (hPa)	$\Delta P$ (hPa)	MSW (kt)	Grade
26.09.2025	1200	19.3	86.1	1.5	998	4	25	D
	1800	19.3	85.5	1.5	998	4	25	D
27.09.2025	Crossed south Odisha coast near latitude 19.3°N and longitude 85.0°E close to Gopalpur around 0430 hrs IST of the 27 <sup>th</sup> September (2300 UTC of 26 <sup>th</sup> September) 2025							
	0000	19.3	84.8	-	998	4	25	D
	0300	19.3	84.2	-	998	4	25	D
	0600	19.3	83.4	-	998	4	25	D
	1200	19.7	81.5	-	999	3	20	D
	1800	20.3	79.5	-	999	3	20	D
28.09.2025	0000	20.3	77.0	-	999	3	20	D
	0300	Weakened into a well-marked low-pressure area over west Vidarbha and adjoining north Madhya Maharashtra						

**Table 10: Best track positions and other parameters of the Deep Depression over Westcentral Bay of Bengal during 01st – 03rd October, 2025**

Date	Time (UTC)	Lat. (°N)	Long. (°E)	C.I. No.	ECP (hPa)	ΔP (hPa)	MSW (kt)	Category
01.10.2025	0600	15.8	86.5	1.5	998	3	25	D
	1200	16.3	86.3	1.5	997	4	25	D
	1800	16.8	86.0	2.0	996	5	30	DD
02.10.2025	0000	17.7	85.7	2.0	996	5	30	DD
	0300	18.0	85.6	2.0	995	6	30	DD
	0600	18.6	85.3	2.0	995	6	30	DD
	Crossed Odisha coast close to Gopalpur as a deep depression with maximum sustained wind speed of 55-65 gusting to 75 kmph.							
	1200	19.4	84.9	-	996	5	30	DD
	1800	19.8	84.4	-	997	5	30	DD
03.10.2025	0000	20.2	84.1	-	999	4	25	D
	0300	20.7	83.7	-	1000	4	25	D
	0600	21.2	83.6	-	1001	3	25	D
	1200	Weakened into a well-marked low-pressure area over north Chhattisgarh & adjoining areas of north interior Odisha & Jharkhand						

**Table 11: Best track positions and other parameters of the Severe Cyclonic Storm Shakhti over Arabian Sea during 01<sup>st</sup> – 07<sup>th</sup> October, 2025**

Date	Time (UTC)	Lat. (°N)	Long. (°E)	C.I. No.	ECP (hPa)	$\Delta P$ (hPa)	MSW (kt)	Category
01.10.2025	1200	22.0	68.3	1.5	1001	3	25	D
	1800	21.5	68.2	1.5	1001	3	25	D
02.10.2025	0000	21.0	68.0	1.5	1001	3	25	D
	0300	20.8	67.9	2.0	1001	3	25	D
	0600	20.8	67.9	2.0	1001	3	25	D
	1200	20.8	67.9	2.0	1001	3	25	D
	1800	20.8	67.7	2.0	1000	4	30	DD
03.10.2025	0000	21.3	67.2	2.0	1000	4	30	DD
	0300	21.5	67.0	2.0	999	5	30	DD
	0600	21.7	66.8	2.5	997	7	35	CS
	0900	21.8	66.6	2.5	997	7	35	CS
	1200	22.0	66.4	2.5	996	8	40	CS
	1500	22.1	66.2	3.0	996	8	40	CS
	1800	22.0	65.8	3.0	994	10	45	CS
	2100	22.0	65.6	3.0	994	10	45	CS
04.10.2025	0000	22.0	65.0	3.0	992	12	50	SCS
	0300	22.0	64.5	3.5	990	15	55	SCS
	0600	21.9	64.2	3.5	990	15	55	SCS
	0900	21.8	63.8	3.5	990	15	55	SCS
	1200	21.7	63.6	3.5	990	15	55	SCS
	1500	21.5	63.0	3.5	990	15	55	SCS

	1800	21.3	62.7	3.5	989	16	55	SCS
	2100	21.1	62.3	3.5	989	16	55	SCS
05.10.2025	0000	21.0	61.8	3.5	987	18	60	SCS
	0300	20.9	61.3	3.5	986	19	60	SCS
	0600	20.7	61.1	3.5	987	18	60	SCS
	0900	20.5	61.0	3.5	988	17	60	SCS
	1200	20.2	60.7	3.5	990	15	55	SCS
	1500	20.0	60.6	3.5	991	14	55	SCS
	1800	19.8	60.6	3.0	992	13	50	SCS
	2100	19.7	60.5	3.0	993	12	50	SCS
	06.10.2025	0000	19.7	60.5	3.0	994	11	45
0300		19.7	60.4	3.0	994	11	45	CS
0600		19.7	60.3	3.0	995	9	40	CS
0900		19.6	60.3	3.0	996	8	40	CS
1200		19.6	60.2	2.5	997	7	35	CS
1500		19.6	60.1	2.5	998	6	35	CS
1800		19.5	60.1	2.0	999	5	30	DD
07.10.2025	0000	19.2	60.3	2.0	999	5	30	DD
	0300	19.0	60.5	1.5	1001	4	25	D
	0600	18.9	60.7	1.5	1002	3	20	D
	1200	Weakened into a well-marked low-pressure area over westcentral Arabian Sea						

**Table 12: Best track positions and other parameters of the Depression over Southeast Arabian Sea during 22<sup>nd</sup> October– 1<sup>st</sup> November, 2025**

Date	Time (UTC)	Lat. (°N)	Long. (°E)	C.I. No.	ECP (hPa)	$\Delta P$ (hPa)	MSW (kt)	Category
22.10.25	0000	8.6	67.6	1.5	1002	3	20	D
	0300	8.9	67.4	1.5	1002	3	20	D
	0600	9.0	67.0	1.5	1002	3	20	D
	1200	9.3	67.4	1.5	1002	3	20	D
	1800	9.5	67.6	1.5	1002	3	20	D
23.10.25	0000	9.6	67.7	1.5	1001	3	20	D
	0300	9.8	67.8	1.5	1001	3	20	D
	0600	10.1	68.0	1.5	1001	3	20	D
	1200	11.0	69.4	1.5	1001	3	20	D
	1800	12.0	70.0	1.5	1001	3	20	D
24.10.25	0000	13.3	70.5	1.5	1001	3	20	D
	0300	14.0	70.6	1.5	1001	3	20	D
	0600	14.4	70.7	1.5	1001	3	20	D
	1200	15.2	70.7	1.5	1001	3	20	D
	1800	16.1	70.7	1.5	1001	3	20	D
25.10.25	0000	16.4	70.4	1.5	1001	3	20	D
	0300	16.5	70.4	1.5	1001	3	20	D
	0600	16.6	69.2	1.5	1001	3	20	D
	1200	16.6	68.0	1.5	1001	3	20	D
	1800	16.6	67.2	1.5	1001	3	20	D
26.10.25	0000	16.5	66.8	1.5	1001	3	20	D
	0300	16.0	66.5	1.5	1001	3	20	D

	0600	15.5	66.4	1.5	1001	3	20	D
	1200	15.1	66.4	1.5	1001	3	20	D
	1800	15.1	66.5	1.5	1001	3	20	D
27.10.25	0000	16.1	66.8	1.5	1000	4	25	D
	0300	16.4	66.9	1.5	1000	4	25	D
	0600	16.6	67.2	1.5	1000	4	25	D
	1200	16.7	67.3	1.5	1000	4	25	D
	1800	16.7	67.3	1.5	1000	4	25	D
28.10.25	0000	17.0	67.8	1.5	1000	4	25	D
	0300	17.1	67.8	1.5	1000	4	25	D
	0600	17.2	68.0	1.5	1000	4	25	D
	1200	17.4	68.5	1.5	1000	4	25	D
	1800	17.7	69.0	1.5	1000	4	25	D
29.10.25	0000	17.9	69.2	1.5	1000	4	25	D
	0300	17.9	69.2	1.5	1000	4	25	D
	0600	18.0	69.1	1.5	1000	4	25	D
	1200	17.9	69.0	1.5	1000	4	25	D
	1800	17.9	68.8	1.5	1000	4	25	D
30.10.25	0000	17.9	68.2	1.5	1000	4	25	D
	0300	17.9	68.2	1.5	1000	4	25	D
	0600	17.9	68.2	1.5	1000	4	25	D
	1200	18.1	68.2	1.5	1000	4	25	D
	1800	18.3	68.2	1.5	1000	4	25	D
31.10.25	0000	18.6	68.4	1.5	1000	4	25	D
	0300	18.9	68.5	1.5	1000	4	25	D

	0600	18.9	68.5	1.5	1000	4	25	D
	1200	19.2	69.0	1.5	1000	4	25	D
	1800	19.4	69.6	1.5	1001	3	20	D
01.11.25	0000	Weakened into a well-marked low-pressure area over the eastcentral and adjoining northeast Arabian Sea						

**Table 13: Best track positions and other parameters of the Severe Cyclonic Storm “Montha” over Southeast Bay of Bengal during 25<sup>th</sup> – 30<sup>th</sup> October, 2025**

Date	Time (UTC)	Lat. (°N)	Long. (°E)	C.I. No.	ECP (hPa)	ΔP (hPa)	MSW (kt)	Category
25.10.2025	0000	10.8	89.0	1.5	1003	3	20	D
	0300	10.8	88.8	1.5	1002	4	25	D
	0600	10.8	88.6	1.5	1002	4	25	D
	1200	10.9	88.1	1.5	1002	4	25	D
	1800	11.0	87.7	1.5	1002	4	25	D
26.10.2025	0000	11.1	87.3	2.0	1000	5	30	DD
	0300	11.2	87.1	2.0	998	6	30	DD
	0600	11.3	86.9	2.0	998	6	30	DD
	1200	11.4	86.6	2.0	998	6	30	DD
	1800	11.6	85.9	2.5	997	7	35	CS
	2100	11.9	85.5	2.5	997	7	35	CS
27.10.2025	0000	12.2	85.3	2.5	997	7	35	CS
	0300	12.6	84.9	2.5	996	8	40	CS
	0600	12.8	84.6	2.5	996	8	40	CS
	0900	13.0	84.2	2.5	995	9	40	CS
	1200	13.3	84.0	3.0	994	10	45	CS
	1500	13.6	83.8	3.0	994	10	45	CS
	1800	14.0	83.5	3.0	993	11	45	CS
	2100	14.4	83.3	3.0	992	12	45	CS
28.10.2025	0000	14.7	83.0	3.0	991	13	50	SCS
	0300	14.9	82.9	3.0	991	13	50	SCS
	0600	15.2	82.7	3.0	991	13	50	SCS
	0900	15.6	82.5	3.0	990	14	50	SCS
	1200	16.0	82.2	3.0	990	14	50	SCS
	1500	16.2	82.0	3.0	990	14	50	SCS
	1800	16.3	81.7	3.0	990	14	50	SCS
	Crossed Andhra Pradesh and Yanam between Machilipatnam and Kalingapatnam to the south of Kakinada close to Narsapur near latitude 16.35N and longitude 81.70 E during 1800 UTC-1900 UTC of 28th October (2330 hrs IST of 28th October and 0030 hrs IST of 29th October) with maximum sustained wind speed of 90-100 gusting to 110 kmph							
2100	16.5	81.5	-	992	12	40	CS	

29.10.2025	0000	17.0	81.3	-	997	7	35	CS
	0300	17.3	81.2	-	999	5	30	DD
	0600	17.7	81.1	-	999	5	30	DD
	1200	18.7	80.9	-	1000	4	25	D
	1800	19.6	80.7	-	1000	3	20	D
30.10.2025	0000	Weakened into a Well-Marked Low-Pressure Area over east Vidarbha and adjoining south Chhattisgarh						

**Table 14. Best track positions and other parameters of the CS SENYAR over strait of Malacca 25<sup>th</sup> – 27<sup>th</sup> November 2025**

Date	Time (UTC)	Lat. (°N)	Long. (°E)	C.I. No.	ECP (hPa)	ΔP (hPa)	MSW (kt)	Category
25.11.2025	0300	5.4	99.7	1.5	1004	3	20	D
	0600	5.3	99.5	1.5	1004	3	20	D
	1200	5.1	99.0	1.5	1003	4	25	D
	1800	5.1	98.5	2.0	1002	5	30	DD
26.11.2025	0000	5.0	98.0	2.5	999	8	40	CS
	Crossed Indonesia coast near 4.90°N/97.75°E between 0200-0300 UTC with maximum sustained wind speed of 70-80 gusting to 90 kmph (40 kt gusting to 50 kt)							
	0300	4.9	97.8	-	999	8	40	CS
	0600	4.7	97.8	-	999	8	40	CS
	0900	4.6	97.8	-	999	8	40	CS
	1200	4.3	98.1	-	1000	7	35	CS
	1500	4.1	98.3	-	1000	7	35	CS
	1800	4.0	98.5	-	1000	7	35	CS
	Emerged into Strait of Malacca during 1900-2000 UTC							
	2100	3.8	98.8	2.5	1001	6	35	CS
27.11.2025	0000	3.7	99.2	2.0	1002	5	30	DD
	0300	3.7	99.6	2.0	1002	5	30	DD
	0600	3.6	99.8	1.5	1003	4	25	D
	1200	3.6	100.7	1.5	1004	3	20	D
	1500	3.6	100.9	1.5	1004	3	20	D
	1800	Weakened into a well-marked low pressure area over Malacca Strait and adjoining Malaysia						

**Table 15: Best track positions and other parameters of the Cyclonic Storm “Ditwah” over Southwest Bay of Bengal and adjoining areas of southeast Sri Lanka & Equatorial Indian Ocean during 26<sup>th</sup> November – 03<sup>rd</sup> December, 2025**

Date	Time (UTC)	Lat. (°N)	Long. (°E)	C.I. No.	ECP (hPa)	ΔP (hPa)	MSW (kt)	Category
26.11.25	1800	5.9	82.6	1.5	1004	4	25	D
27.11.25	0000	6.3	82.4	2.0	1003	5	30	DD
	0300	6.7	82.1	2.0	1003	5	30	DD
	0600	6.9	81.9	2.5	1002	6	35	CS
	0900	7.2	81.8	2.5	1002	6	35	CS
	1200	7.6	81.6	2.5	1002	6	35	CS
	1500	7.7	81.5	2.5	1002	6	35	CS
	1800	7.9	81.3	2.5	1002	6	35	CS
	2100	8.1	81.2	2.5	1002	6	35	CS
28.11.25	0000	8.2	81.1	2.5	1002	6	35	CS
	0300	8.3	81.0	2.5	1002	6	35	CS
	0600	8.4	81.0	2.5	1002	6	35	CS
	0900	8.5	81.0	2.5	1002	6	35	CS
	1200	8.7	80.9	2.5	1002	6	35	CS
	1500	8.8	80.8	2.5	1002	6	35	CS
	1800	9.0	80.8	2.5	1002	6	35	CS
	2100	9.2	80.8	2.5	1001	7	35	CS
29.11.25	0000	9.4	80.7	2.5	1001	7	35	CS
	0300	9.6	80.7	2.5	1000	8	40	CS
	0600	9.9	80.7	2.5	1000	8	40	CS
	0900	10.1	80.6	2.5	1000	8	40	CS

	1200	10.4	80.6	2.5	1000	8	40	CS
	1500	10.5	80.6	2.5	1000	8	40	CS
	1800	10.7	80.6	2.5	1000	8	40	CS
	2100	10.8	80.6	2.5	1000	8	40	CS
30.11.25	0000	11.1	80.6	2.5	1000	8	40	CS
	0300	11.4	80.6	2.5	1000	8	40	CS
	0600	11.5	80.6	2.5	1001	7	35	CS
	0900	11.7	80.6	2.5	1002	6	35	CS
	1200	11.8	80.6	2.0	1003	5	30	DD
	1800	12.3	80.6	2.0	1003	5	30	DD
01.12.2025	0000	12.8	80.6	2.0	1003	5	30	DD
	0300	12.8	80.6	2.0	1003	5	30	DD
	0600	13.0	80.6	2.0	1003	5	30	DD
	1200	13.0	80.6	2.0	1003	5	30	DD
	1800	13.0	80.6	2.0	1003	5	30	DD
02.12.2025	0000	12.9	80.5	1.5	1004	4	25	D
	0300	12.8	80.5	1.5	1004	4	25	D
	0600	12.5	80.4	1.5	1004	4	25	D
	1200	12.3	80.3	1.5	1004	4	25	D
	1800	12.1	80.2	1.5	1005	3	20	D
03.12.2025	0000	Weakened into a Well-Marked Low-Pressure Area over North Tamil Nadu-Puducherry coasts and neighbourhood						

Kt: Knots (nautical mile per hour), 1 kt=1.85 kmph, D: Depression, DD: Deep Depression, CS: Cyclonic Storm

Figure 1: Graphical best track of the depression over Eastcentral Arabian Sea and adjoining south Konkan coast during 24th May – 25th May, 2025

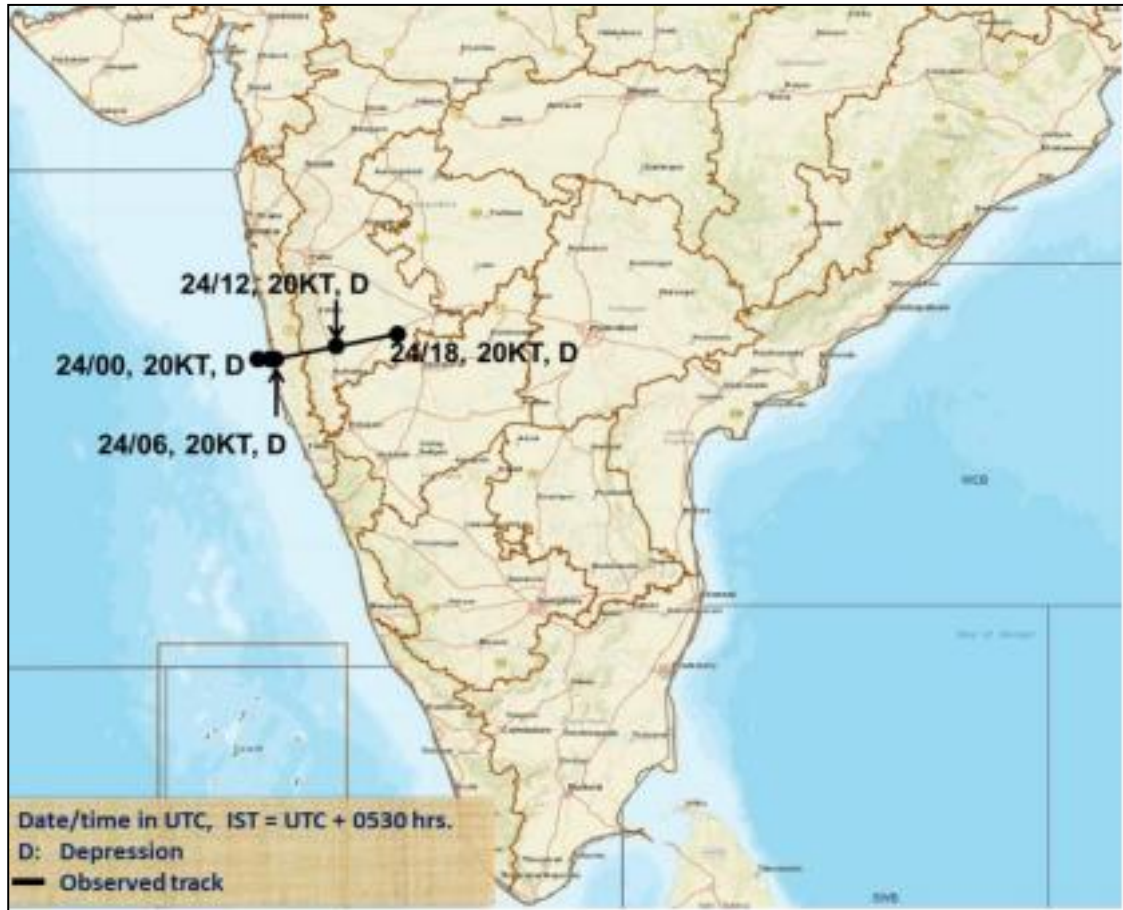


Figure 2: Graphical best track of the Deep Depression Over Northwest Bay of Bengal off West Bengal-Bangladesh Coasts during 29th May – 30th May, 2025

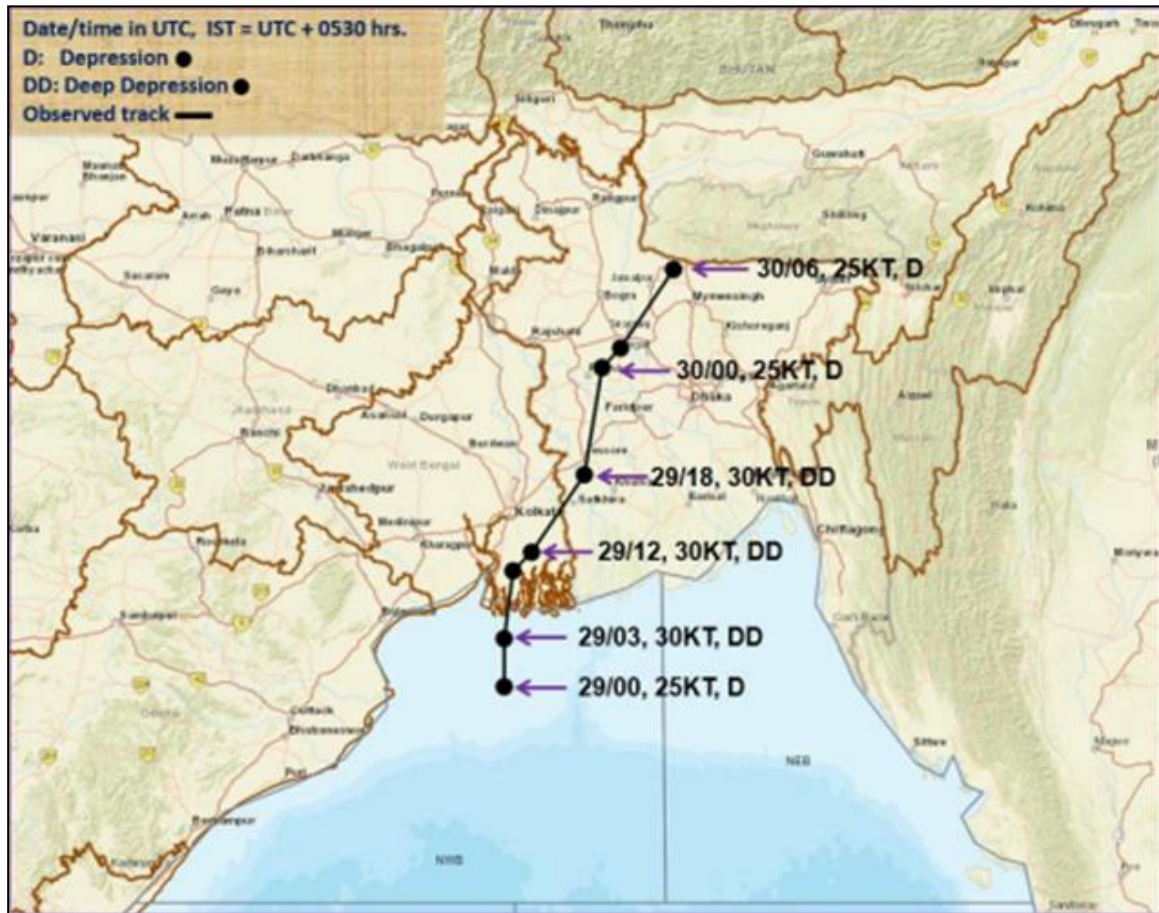


Figure 3: Graphical best track of the depression over southeast Gangetic West Bengal and adjoining Bangladesh during 14<sup>th</sup> July – 15<sup>th</sup> July, 2025.



Figure 4: Graphical best track of the depression over central parts of north Rajasthan during 15th July – 16th July, 2025.

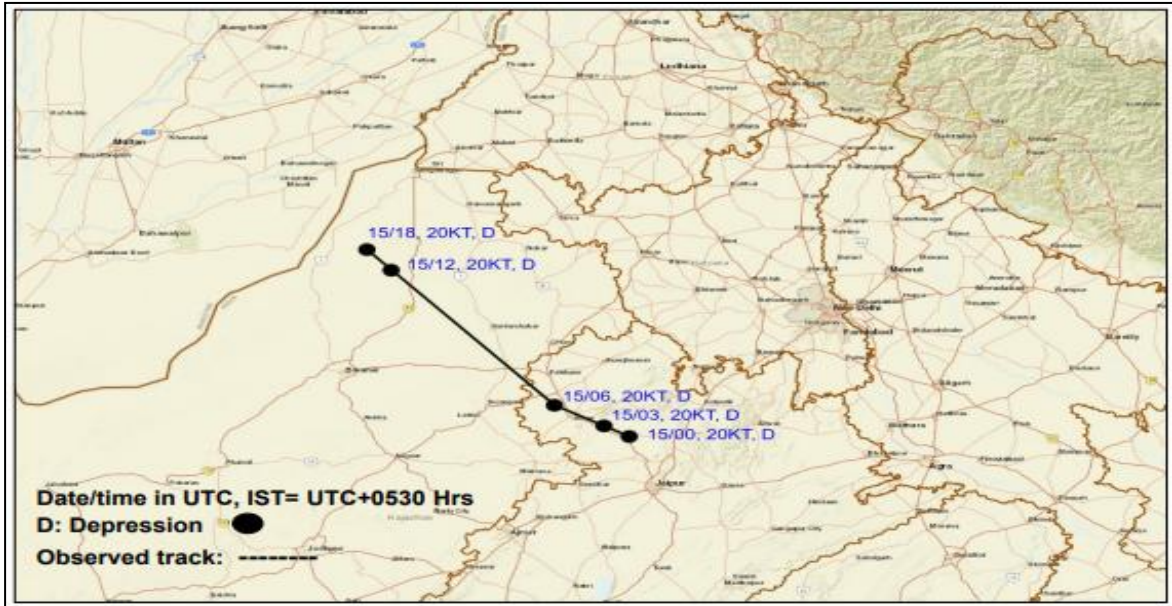


Figure 5: Graphical best track of the depression over southeast Uttar Pradesh during 17th July – 20th July, 2025.

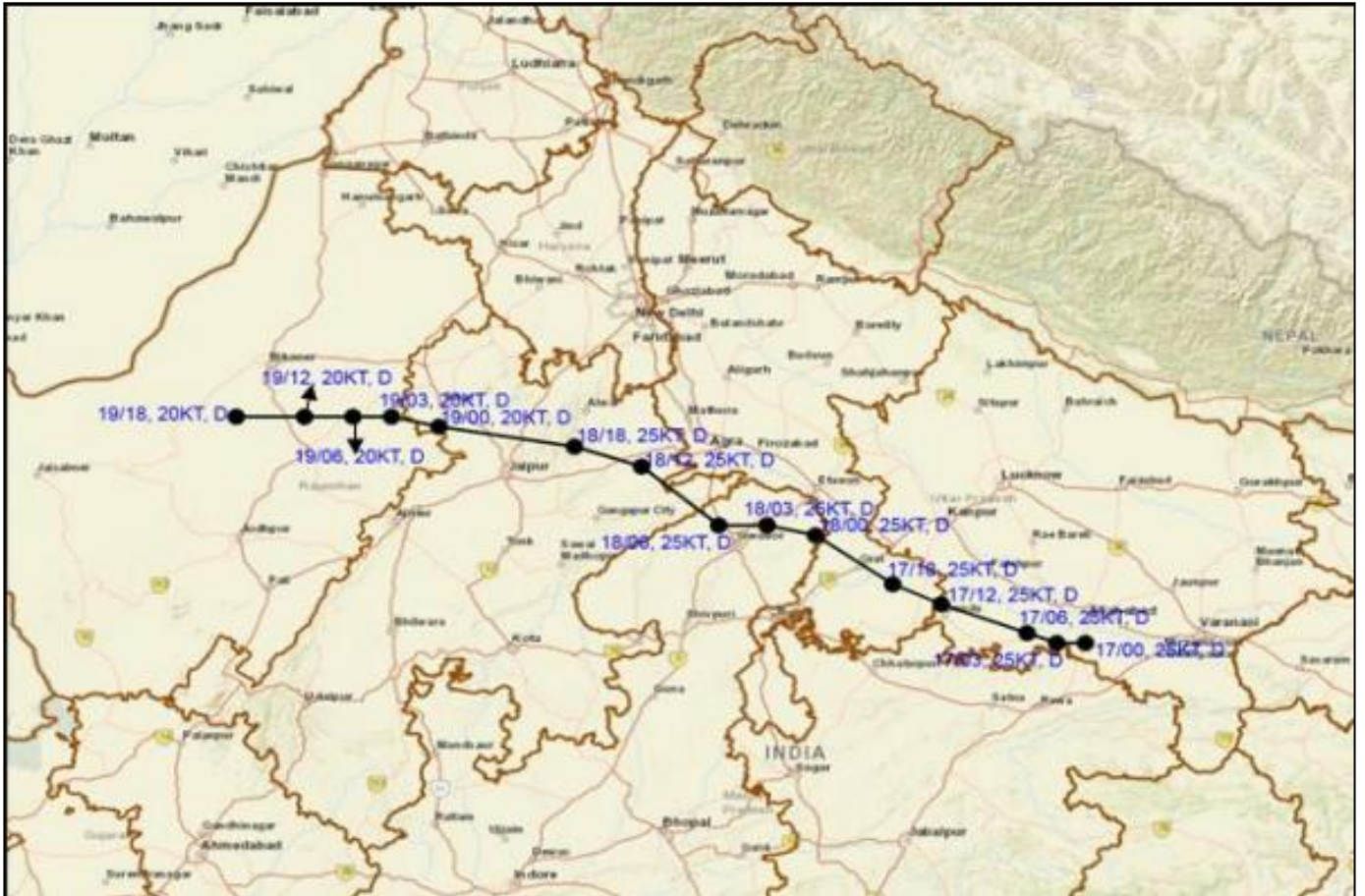


Figure 6: Graphical best track of the depression over Northwest Bay of Bengal during 25th July – 27th July, 2025.

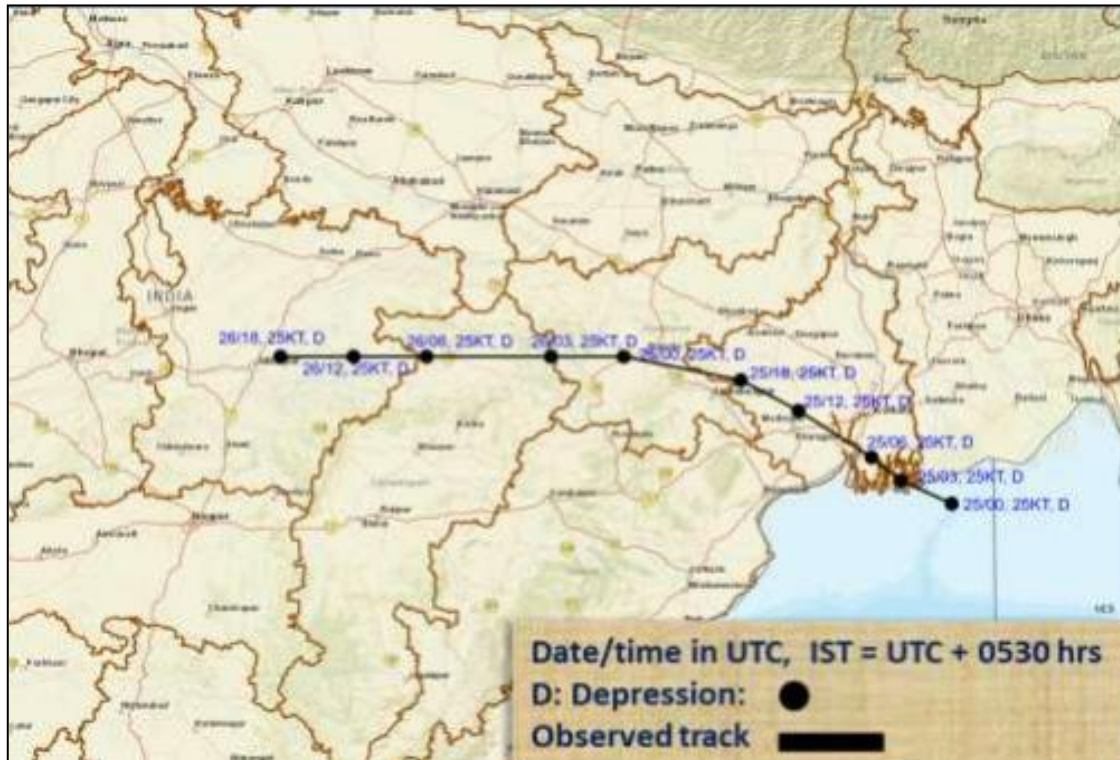


Figure 7: Graphical best track of the depression over northwest and adjoining westcentral Bay of Bengal and north Andhra Pradesh-south Odisha coasts during 18th August – 19th August, 2025.

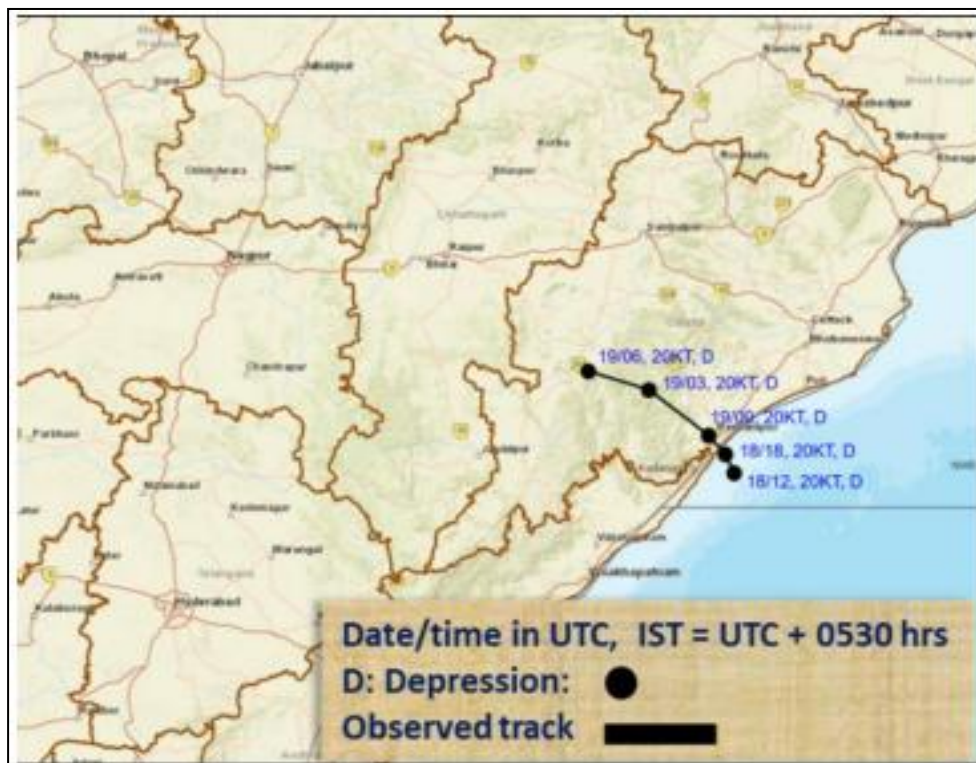


Figure 8: Graphical best track of the land deep depression over southwest Rajasthan and neighbourhood during 06th September – 10th September, 2025.



Figure 9: Graphical best track of the depression over northwest and adjoining westcentral Bay of Bengal during 26th September – 28th September, 2025.

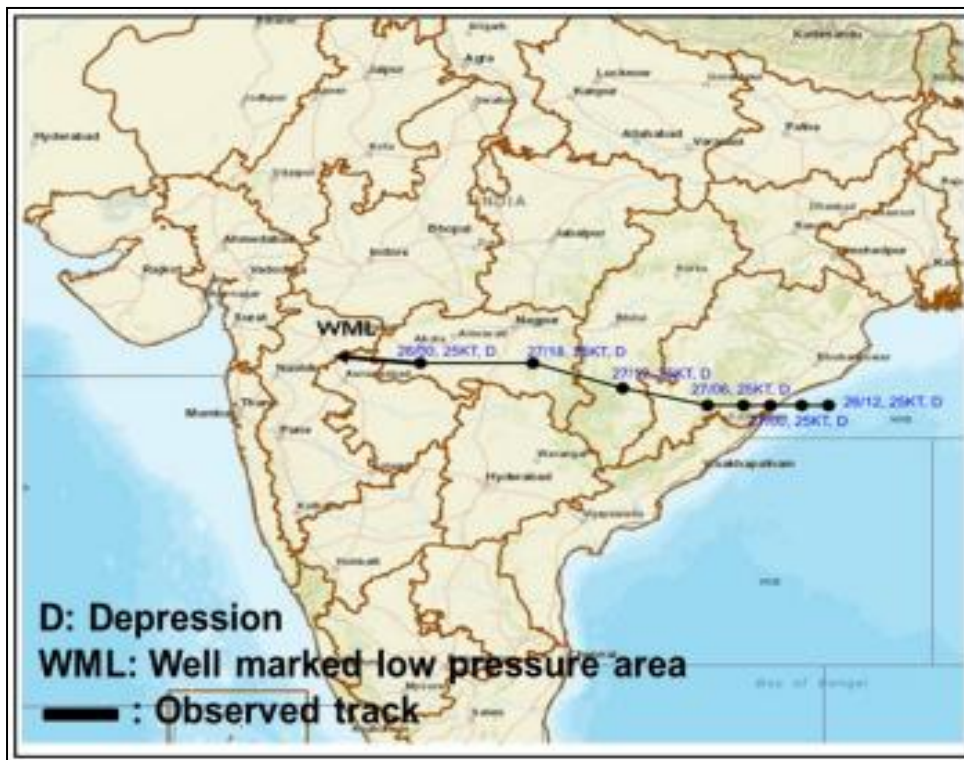


Figure 10: Graphical best track of the deep depression over westcentral Bay of Bengal during 01st October – 03rd October, 2025.



Figure 11: Graphical best track of the Severe Cyclonic Storm “Shakhti” over northeast Arabian Sea during 01st October – 07th October, 2025.

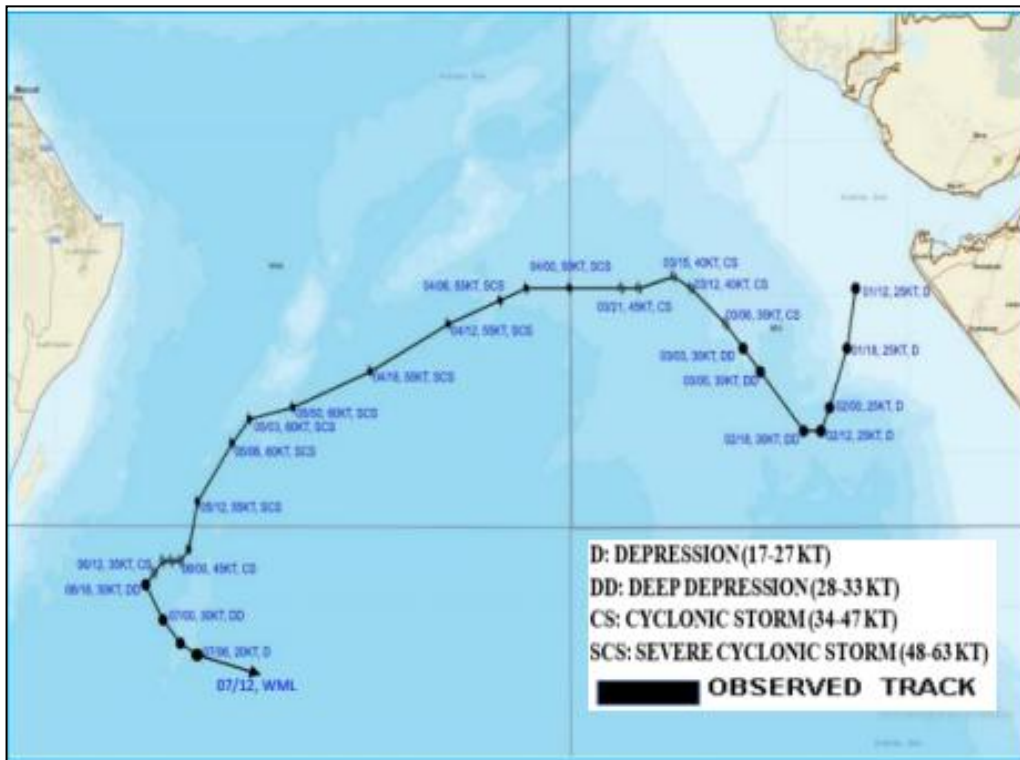


Figure 12: Graphical best track of the depression over southeast Arabian Sea during 22nd October – 01st November, 2025.

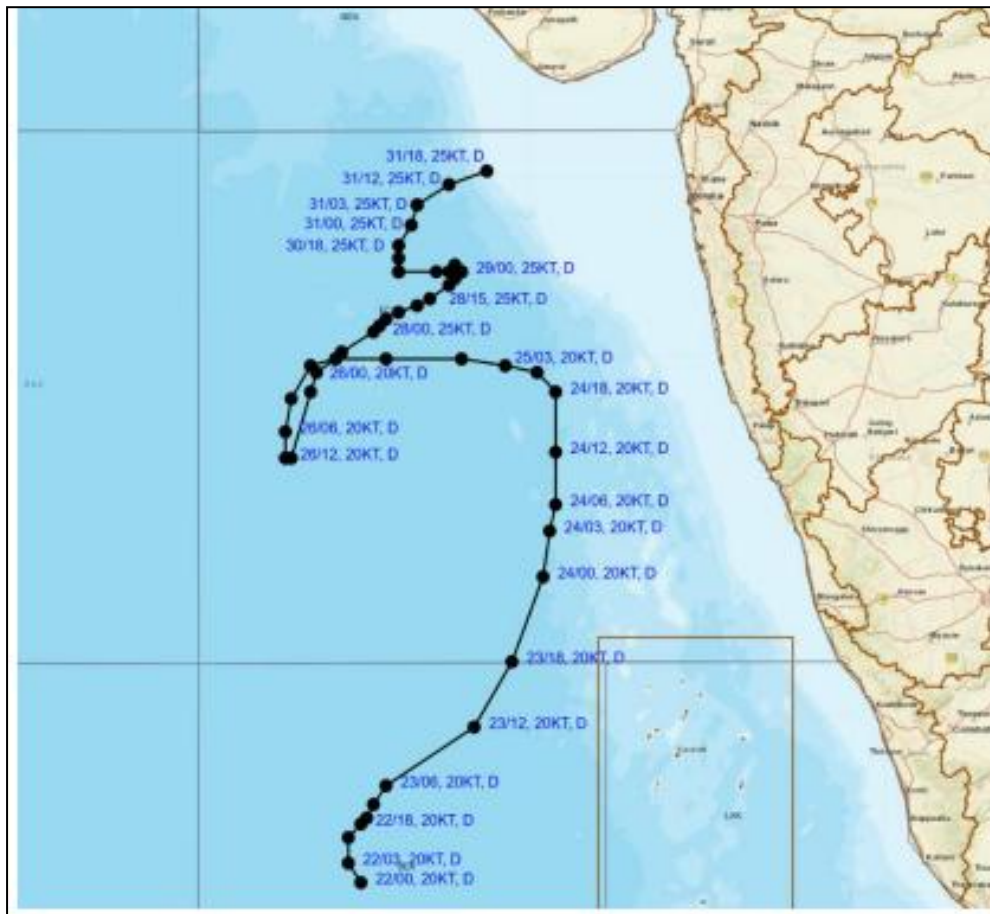


Figure 13: Graphical best track of the Severe Cyclonic Storm “Montha” over westcentral Bay of Bengal during 25th October – 30th October, 2025.



Figure 14: Graphical best track of the Cyclonic Storm "SENYAR" over Strait of Malacca during 25th November – 27th November, 2025.



Figure 15: Graphical best track of the Cyclonic Storm “Ditwah” over Southwest Bay of Bengal and adjoining areas of southeast Sri Lanka and Equatorial Indian Ocean during 26th November – 03rd December, 2025.

