



**India Meteorological Department
(Ministry of Earth Sciences)**

BULLETIN NO. : 12 (BOB/07/2022)

TIME OF ISSUE: 0830 HOURS IST

DATED: 21.08.2022

FROM: INDIA METEOROLOGICAL DEPARTMENT (FAX NO. 24643965/24699216/24623220)

TO: CONTROL ROOM, NDM, MINISTRY OF HOME AFFAIRS (FAX.NO. 23093750)

CONTROL ROOM NDMA (FAX.NO. 26701729)

CABINET SECRETARIAT (FAX.NO.23012284, 23018638)

PS TO HON'BLE MINISTER FOR S & T AND EARTH SCIENCES (FAX NO.23316745)

SECRETARY, MOES (FAX NO. 24629777)

H.Q. (INTEGRATED DEFENCE STAFF AND CDS) (FAX NO. 23005137/23005147)

DIRECTOR GENERAL, DOORDARSHAN (23385843)

DIRECTOR GENERAL, AIR (23421105, 23421219)

PIB MOES (FAX NO. 23389042)

UNI (FAX NO. 23355841)

D.G. NATIONAL DISASTER RESPONSE FORCE (NDRF) (FAX NO. 26105912, 2436 3260)

DIRECTOR, PUNCTUALITY, INDIAN RAILWAYS (FAX NO. 23388503)

CHIEF SECRETARY, CHATTISGARH (FAX NO. 771-2221206)

CHIEF SECRETARY, GOVT. OF MADHYA PRADESH (FAX NO. 755-2441076)

CHIEF SECRETARY, GOVT. OF MAHARASHTRA (FAX NO. 022- 22028594)

CHIEF SECRETARY, GOVT. OF UTTAR PRADESH (FAX NO. 522- 2239283)

CHIEF SECRETARY, GOVT. OF RAJASTHAN (FAX NO. 0141-2227114)

CHIEF SECRETARY, GOVT. OF GUJARAT (FAX NO. 079-23250305)

Sub: Deep Depression weakened into a Depression over Northwest Chhattisgarh and adjoining Northeast Madhya Pradesh & Southeast Uttar Pradesh

The Deep Depression over Northwest Chhattisgarh and adjoining Northeast Madhya Pradesh & Southeast Uttar Pradesh moved west-northwestwards during past 06 hours with a speed of 13 kmph, **weakened into a Depression** and lay centered at 0530 hrs IST of today, the 21st August, 2022 over the same region near latitude 23.6°N and longitude 82.1°E, about 120 km west-northwest of Ambikapur (Chhattisgarh), 150 km southwest of Churk (Uttar Pradesh), 170 km east-southeast of Satna and 120 km east of Umariya (Madhya Pradesh).

It would continue to move west-northwestwards across north Madhya Pradesh and weaken into a Well Marked Low Pressure Area during next 24 hours.

Forecast track and intensity are given in the following table:

Date/Time(IST)	Position (Lat. °N/ long. °E)	Maximum sustained surface wind speed (Kmph)	Category of cyclonic disturbance
21.08.22/0530	23.6/82.1	40-50 gusting to 60	Depression
21.08.22/1130	23.7/81.2	40-50 gusting to 60	Depression
21.08.22/1730	23.9/80.0	35-45 gusting to 55	Depression
21.08.22/2330	24.0/78.8	30-40 gusting to 50	Depression
22.08.22/0530	24.2/77.4	25-35 gusting to 45	Well Marked Low

Warnings:

Rainfall:

21st August: Rainfall at most places with heavy to very heavy rainfall at a few places and extremely heavy falls at isolated places is very likely over West Madhya Pradesh and adjoining East Madhya Pradesh. Rainfall at most places is very likely with heavy to very heavy rainfall at isolated places over East Rajasthan and rest parts of East Madhya Pradesh. Heavy rainfall at isolated places is very likely over north Chattisgarh during next 12 hours.

22nd August: Rainfall at most places with heavy to very heavy rainfall at a few places and extremely heavy rainfall at isolated places very likely over East Rajasthan; heavy to very heavy rainfall at isolated places over West Madhya Pradesh and heavy rainfall at isolated places over West Rajasthan and North Gujarat region.

23rd August: Rainfall at most places with heavy to very heavy rainfall at isolated places is likely over South Rajasthan & adjoining North Gujarat.

24th August: Rainfall at most places with heavy rainfall at isolated places is likely over Southwest Rajasthan.

Wind:

- **Squally wind speed reaching 30-40 gusting to 50 kmph** is likely over North Chhattisgarh and adjoining areas of south Uttar Pradesh during next 12 hours and **strong winds speed reaching 25-35 kmph gusting to 45 kmph** is likely to prevail over North Madhya Pradesh and adjoining areas of South Uttar Pradesh and East Rajasthan during next 24 hours.

Damage expected over north Chattisgarh and North & Central Madhya Pradesh:

- Damage to loose/unsecured structures. Some breaches in Kutcha road & embankments due to flooding.
- Damage to small trees like Banana, Papaya etc. Damage to standing crops and horticulture.
- Localized Flooding of roads, water logging in low lying areas and closure of underpasses.
- Reduction in visibility due to heavy rainfall.
- Disruption of traffic in major cities due to water logging in roads.
- Localized Landslide/Mudslides.
- It may lead to riverine flooding in some river catchments (for riverine flooding please visit Web page of CWC)

Next Bulletin will be issued at 1130 hours IST of today, the 21st August, 2022.

(RK Jenamani)
Scientist F, Cyclone Warning Division, New Delhi

Copy to: ACWC Mumbai/ ACWC Kolkata/ ACWC Chennai/ CWC Bhubaneswar/CWC Visakhapatnam/ / MO Port Blair/MC Raipur/MC Bhopal/MC Hyderabad/RMC Nagpur/

LEGEND: Heavy Rainfall: 64.5 to 115.5mm, **Very Heavy Rainfall:** 115.6 to 204.4mm **Extremely Heavy Rainfall:** more than 204.5 mm, **Most Places:** more than 76% of total stations, **Many Places:** 50% to 75% of total stations, **Isolated Places:** Less than 25% of total stations

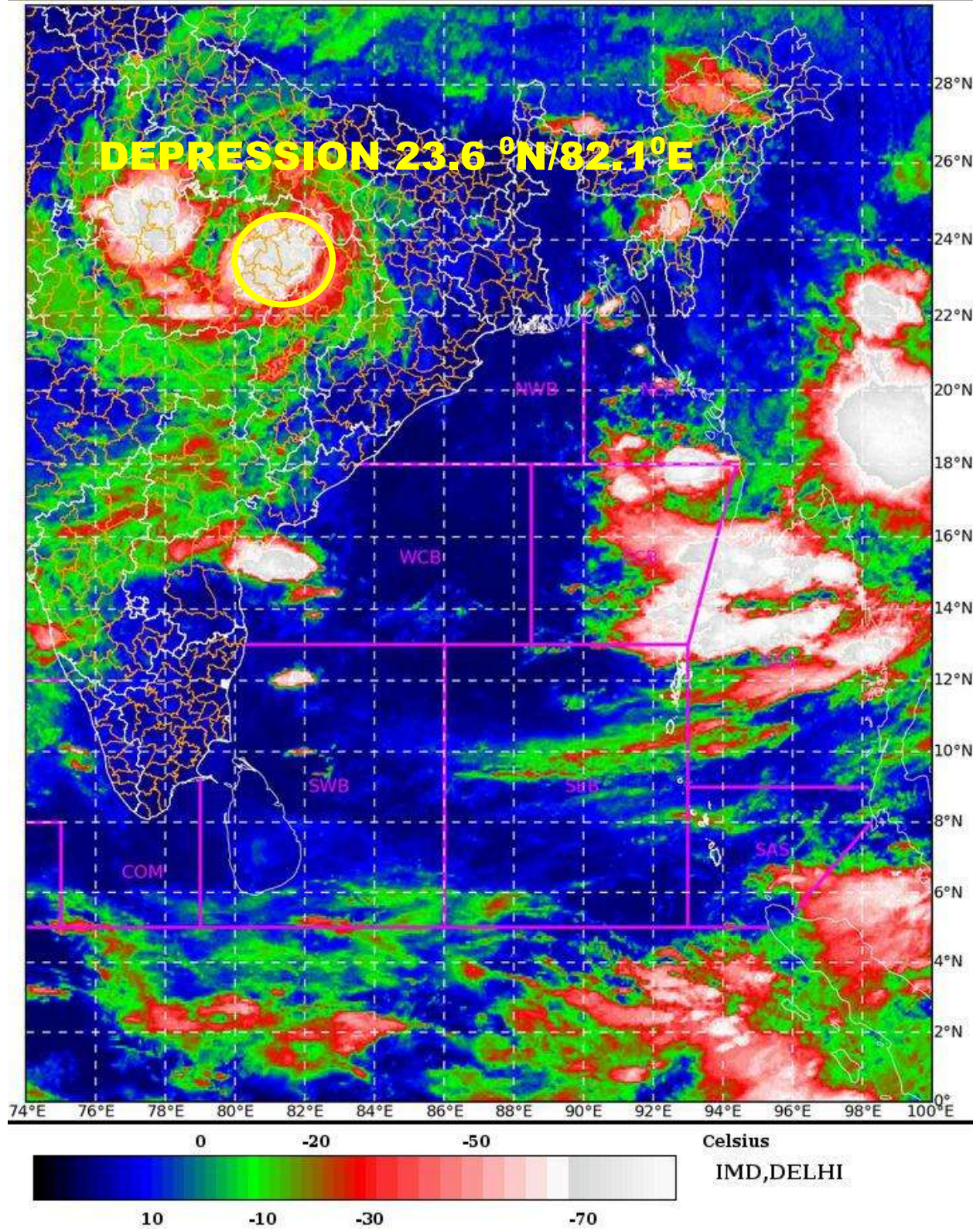
SAT : INSAT-3D IMG

21-08-2022/(0130 to 0156) GMT

IMG_TIR1_TEMP 10.8 um

21-08-2022/(0700 to 0726) IST

L1C Mercator





OBSERVED AND FORECAST TRACK ALONGWITH CONE OF UNCERTAINTY OF DEEP DEPRESSION OVER NORTHWEST CHHATTISGARH AND ADJOINING NORTHEAST MADHYA PRADESH & SOUTHEAST UTTAR PRADESH BASED ON 0000 UTC OF 21ST AUGUST, 2022



DATE/TIME IN UTC
 IST=UTC + 0530
 L: LOW PRESSURE AREA
 WML: WELL MARKED LOW PRESSURE AREA
 D: DEPRESSION (17-27 KT)
 DD: DEEP DEPRESSION (28-33 KT)
 CS: CYCLONIC STORM (34-47 KT)
 SCS: SEVERE CYCLONIC STORM (48-63KT)
 VSCS: VERY SEVERE CYCLONIC STORM (64-89 KT)
 ESCS: EXTREMELY SEVERE CYCLONIC STORM (90-119 KT)
 SuCS: SUPER CYCLONIC STORM (\geq 120 KT)

- LESS THAN 34 KT
- 34-47 KT
- \geq 48 KT
- OBSERVED TRACK
- FORECAST TRACK
- CONE OF UNCERTAINTY

