



**India Meteorological Department
(Ministry of Earth Sciences)**

BULLETIN NO. 8 (BOB/06/2022)

TIME OF ISSUE: 2015 HOURS IST DATED: 15.08.2022
FROM: INDIA METEOROLOGICAL DEPARTMENT (FAX NO. 24643965/24699216/24623220)

TO: CONTROL ROOM, NDM, MINISTRY OF HOME AFFAIRS (FAX.NO. 23093750)
CONTROL ROOM NDMA (FAX.NO. 26701729)
CABINET SECRETARIAT (FAX.NO.23012284, 23018638)
PS TO HON'BLE MINISTER FOR S & T AND EARTH SCIENCES (FAX NO.23316745)
SECRETARY, MOES (FAX NO. 24629777)
H.Q. (INTEGRATED DEFENCE STAFF AND CDS) (FAX NO. 23005137/23005147)
DIRECTOR GENERAL, DOORDARSHAN (23385843)
DIRECTOR GENERAL, AIR (23421105, 23421219)
PIB MOES (FAX NO. 23389042)
UNI (FAX NO. 23355841)
D.G. NATIONAL DISASTER RESPONSE FORCE (NDRF) (FAX NO. 26105912, 2436 3260)
DIRECTOR, PUNCTUALITY, INDIAN RAILWAYS (FAX NO. 23388503)
CHIEF SECRETARY, ODISHA (FAX NO. 0674-2536660)
CHIEF SECRETARY, WEST BENGAL (FAX NO. 033-22144328)
CHIEF SECRETARY, TAMILNADU (FAX NO. 044-25672304)
ADMINISTRATOR, ANDAMAN & NICOBAR ISLANDS (FAX NO. 03192- 232656)
CHIEF SECRETARY, PUDUCHERRY (FAX NO 0413-2334145)
CHIEF SECRETARY, ANDHRA PRADESH (FAX NO. 0863-2441029, 08645-246600)
CHIEF SECRETARY, GOVT. OF CHATTISGARH (FAX NO. 771-2221206)
CHIEF SECRETARY, GOVT. OF JHARKHAND (FAX NO. 651-2400255)
CHIEF SECRETARY, GOVT. OF MADHYA PRADESH (FAX NO. 755-2441076)
CHIEF SECRETARY, GOVT. OF MAHARASHTRA (FAX NO. 022- 22028594)
CHIEF SECRETARY, GUJARAT (FAX NO. 079-23250305)
CHIEF SECRETARY, DAMAN & DIU (FAX NO. 0260-2230775)
CHIEF SECRETARY, DADRA & NAGAR HAVELI (FAX NO. 0260-2645466)
CHIEF SECRETARY, RAJASTHAN (FAX NO. 141-2227114)

INDIA IS CELEBRATING ITS 76TH INDEPENDENCE DAY. INDIA METEOROLOGICAL DEPARTMENT WISHES A VERY HAPPY INDEPENDENCE DAY TO ALL.

Sub: Depression over East Madhya Pradesh

The Depression over East Madhya Pradesh and adjoining Chhattisgarh moved west-northwestwards with a speed of 24 kmph during last 6 hours and lay centered at 1730 hours IST of today, the 15th August over East Madhya Pradesh near latitude 23.3⁰N & longitude 79.8⁰E, about 20 km northwest of Jabalpur (Madhya Pradesh), 120 km east-southeast of Sagar (Madhya Pradesh) and 290 km east-southeast of Guna (Madhya Pradesh).

It is very likely to continue to move west-northwestwards and weaken gradually to a well marked low pressure area by tomorrow.

Warnings:

Rainfall:

Chattisgarh: Rainfall at most places with heavy rainfall at isolated places very likely on 15th August.

East Madhya Pradesh: Rainfall at most places with heavy to very heavy rainfall at isolated places very likely on 15th August.

West Madhya Pradesh: Rainfall at most places with heavy to very heavy rainfall with isolated extremely heavy falls on 15th and heavy to very heavy rainfall at isolated places on 16th August.

Vidarbha: Rainfall at most places with heavy to very heavy rainfall at isolated places on 15th and heavy rainfall at isolated places on 16th August.

East Rajasthan: Rainfall at many places with heavy to extremely heavy rainfall at isolated places on 15th and heavy to very heavy rainfall at isolated places on 16th August.

Gujarat Region: Rainfall at most places with heavy to very heavy rainfall at isolated places on 16th August.

Odisha: Rainfall at many places with heavy rainfall at isolated places very likely over western Odisha on 15th August.

System is under continuous surveillance and the next message will be issued at 0230 hours IST of tomorrow the 16th August, 2022.

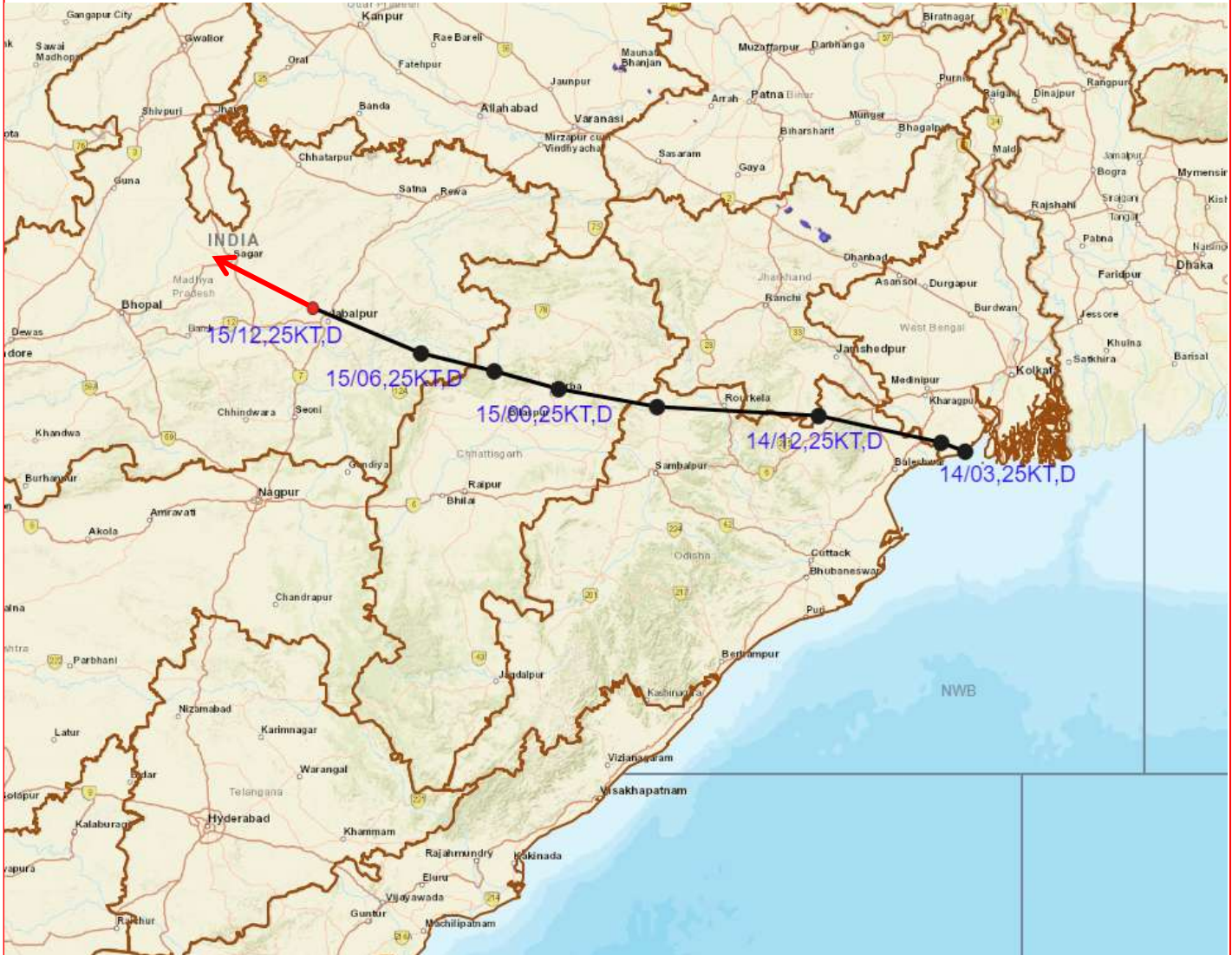
(Ananda Kumar Das)
Scientist E, Cyclone Warning Division, New Delhi

Copy to: ACWC Mumbai/ ACWC Kolkata/ ACWC Chennai/ CWC Bhubaneswar/CWC Visakhapatnam/CWC Ahmedabad/ MO Port Blair/MC Raipur/MC Bhopal/MC Hyderabad/RMC Nagpur/MC Goa/MC Bengaluru/CWC Thiruvananthapuram

LEGEND: Heavy Rainfall: 64.5 to 115.5mm, **Very Heavy Rainfall:** 115.6 to 204.4mm **Most Places:** more than 76% of total stations, **Isolated Places:** Less than 25% of total

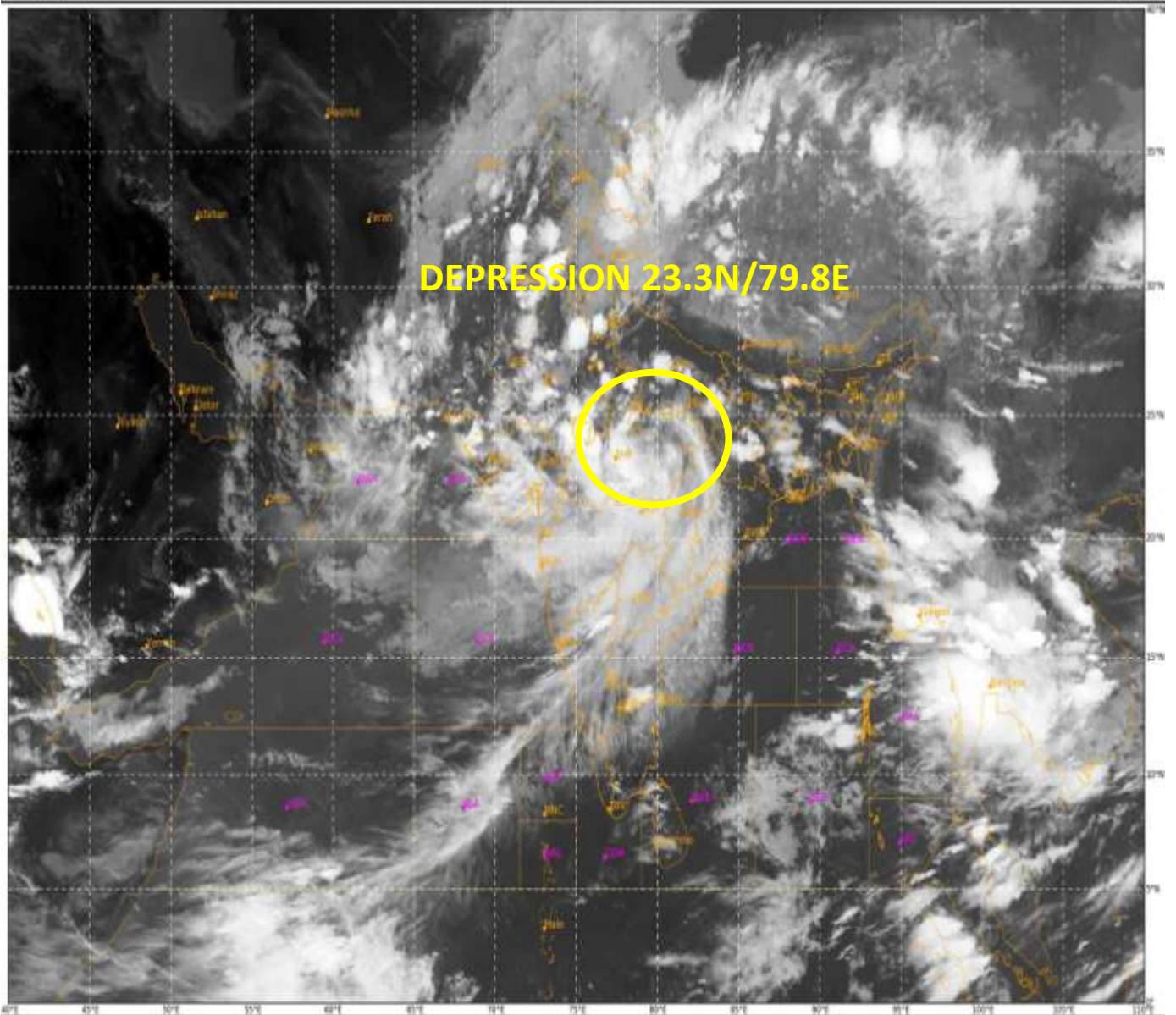


OBSERVED AND FORECAST TRACK OF DEPRESSION OVER EAST MADHYA PRADESH BASED ON 1200 UTC OF 15th AUGUST, 2022



DATE/TIME IN UTC
IST=UTC + 0530
L: LOW PRESSURE AREA
WML: WELL MARKED LOW PRESSURE AREA
D: DEPRESSION (17-27 KT)
DD: DEEP DEPRESSION (28-33 KT)
CS: CYCLONIC STORM (34-47 KT)
SCS: SEVERE CYCLONIC STORM (48-63KT)
VSCS: VERY SEVERE CYCLONIC STORM (64-89 KT)
ESCS: EXTREMELY SEVERE CYCLONIC STORM (90-119 KT)
SuCS: SUPER CYCLONIC STORM (≥ 120 KT)

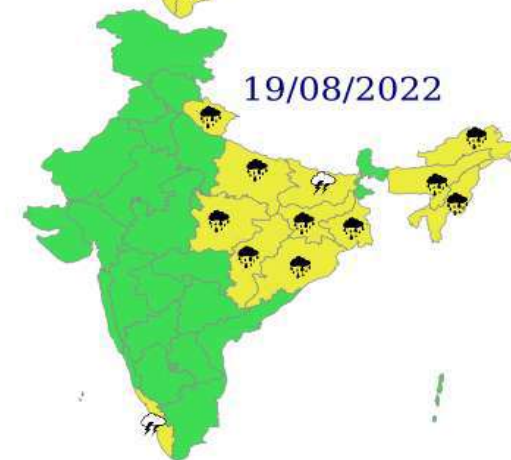
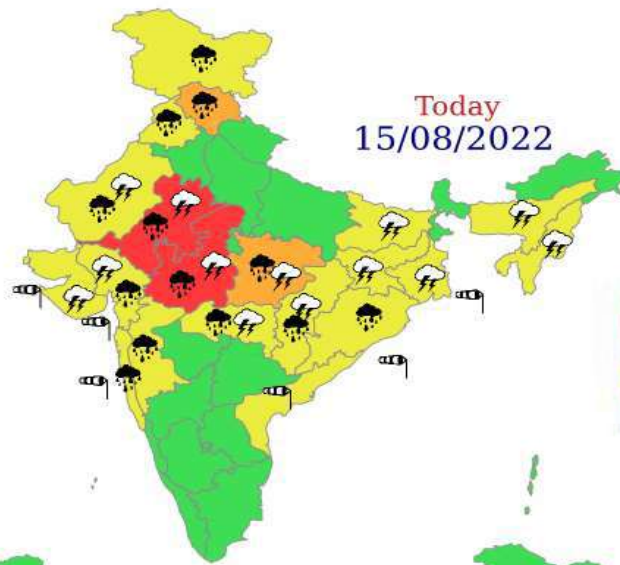
- LESS THAN 34 KT
- 34-47 KT
- ≥ 48 KT
- OBSERVED TRACK
- FORECAST TRACK
- CONE OF UNCERTAINTY



372

644

IMD,DELHI



- | | | | |
|--------------|------------|--------------|--------------|
| Heavy Rain | Heavy Snow | Thunderstorm | Dust Storm |
| Strong Winds | Visibility | Cyclone | Squall/ Hail |
| Frost | Cold Wave | Heat Wave | Sea State |