



**India Meteorological Department
(Ministry of Earth Sciences)**

NATIONAL BULLETIN NO. 16 (ARB/03/2022)

TIME OF ISSUE: 1430 HOURS IST

DATED: 17.12.2022

FROM: INDIA METEOROLOGICAL DEPARTMENT (FAX NO. 24643965/24699216/24623220)

TO: CONTROL ROOM, NDM, MINISTRY OF HOME AFFAIRS (FAX.NO. 23093750)

CONTROL ROOM NDMA (FAX.NO. 26701729)

CABINET SECRETARIAT (FAX.NO.23012284, 23018638)

PS TO HON'BLE MINISTER FOR S & T AND EARTH SCIENCES (FAX NO.23316745)

SECRETARY, MOES (FAX NO. 24629777)

H.Q. (INTEGRATED DEFENCE STAFF AND CDS) (FAX NO. 23005137/23005147)

DIRECTOR GENERAL, DOORDARSHAN (23385843)

DIRECTOR GENERAL, AIR (23421105, 23421219)

PIB MOES (FAX NO. 23389042)

UNI (FAX NO. 23355841)

D.G. NATIONAL DISASTER RESPONSE FORCE (NDRF) (FAX NO. 26105912, 2436 3260)

DIRECTOR, PUNCTUALITY, INDIAN RAILWAYS (FAX NO. 23388503)

CHIEF SECRETARY, GUJARAT (FAX NO. 079-23250305)

CHIEF SECRETARY, DAMAN & DIU (FAX NO. 0260-2230775)

CHIEF SECRETARY, DADRA & NAGAR HAVELI (FAX NO. 0260-2645466)

CHIEF SECRETARY, GOA (FAX NO. 0832-2415201)

CHIEF SECRETARY, MAHARASHTRA (FAX NO. 022- 22028594)

CHIEF SECRETARY, KARNATAKA (FAX NO. 080-22258913)

CHIEF SECRETARY, KERALA (FAX NO. 0471-2327176)

ADMINISTRATOR, LAKSHADWEEP ISLANDS (FAX NO. 0413-262184)

CHIEF SECRETARY, ANDHRA PRADESH (FAX NO. 0863-2441029, 08645-246600)

CHIEF SECRETARY, TAMIL NADU (FAX NO 044-25672304)

CHIEF SECRETARY, PUDUCHERRY (FAX NO 0413-2334145)

CHIEF SECRETARY, GOVT. OF GUJARAT (FAX NO. 079-23250305)

ADMINISTRATOR, ANDAMAN & NICOBAR ISLANDS (FAX NO. 03192- 232656)

Sub: (A) Depression over Westcentral Arabian Sea

(B) Low pressure area over Southeast Bay of Bengal & adjoining areas of East Equatorial Indian Ocean

(A) Depression over Westcentral Arabian Sea

The Depression over Westcentral Arabian Sea moved west-southwestwards with a speed of 15 kmph during past 06 hours and lay centered at 1130 hrs IST of today, the 17th December 2022 over the same region near latitude 13.9°N and longitude 61.4°E about 1270 km west-northwest of Aminidivi (Lakshadweep), 1350 km west-southwest of Panjim (Goa) and 850 km east-southeast of Salalah (Oman).

It is very likely to move nearly westwards and weaken into a well marked low pressure area during next 12 hours.

Warnings:

(i) Wind warning (warning graphics enclosed)

- **Westcentral Arabian Sea: Squally weather with wind speed reaching 40-50 kmph gusting to 60 kmph** is prevailing near the system center. It is likely to decrease gradually becoming 25-35 kmph gusting to 45 kmph during next 12 hours.

- **Southwest Arabian Sea: Squally weather with wind speed reaching 40-50 kmph gusting to 60 kmph** is prevailing over the region and is likely to decrease gradually becoming 25-35 kmph gusting to 45 kmph during next 12 hours.

(ii) Sea Condition

- ❖ **Westcentral Arabian Sea: Sea Condition** is likely to be rough during next 12 hours and improve thereafter.
- ❖ **Southwest Arabian Sea: Sea Condition** is likely to be rough during next 12 hours and improve thereafter.

(iii) Fishermen Warning

Fishermen are advised not to venture into **Westcentral & Southwest Arabian Sea** till 18th December, morning.

(B) Low pressure area over Southeast Bay of Bengal & adjoining East Equatorial Indian Ocean

The **Low Pressure Area** over Southeast Bay of Bengal & adjoining East Equatorial Indian Ocean persists over the same region at 1130 hrs IST of today, the 17th December. It is likely to move westwards slowly over South Bay of Bengal during next 48 hours.

Warnings:

(i) Wind warning:

- ❖ **Squally weather with wind speed reaching 40-45 kmph gusting to 55 kmph** is very likely over South Andaman Sea and adjoining North Andaman Sea during 17th to 19th December.
- ❖ **Squally weather with wind speed reaching 40-45 kmph gusting to 55 kmph** is likely over Southeast Bay of Bengal on 17th & 18th December.
- ❖ **Squally weather with wind speed reaching 40-45 kmph gusting to 55 kmph** is likely to prevail over central parts of South Bay of Bengal on 18th December and over Southwest Bay of Bengal, along and off Sri-Lanka coast and Gulf of Mannar on 19th & 20th December.

(ii) Sea condition: Sea condition is likely to be rough over

- ❖ South Andaman Sea and adjoining North Andaman Sea during 17th to 19th December.
- ❖ Southeast Bay of Bengal on 17th & 18th December.
- ❖ Southwest Bay of Bengal and along and off Sri-Lanka coast & Gulf of Mannar during 18th to 20th December.

(iii) Fishermen Warning (warning graphics enclosed)

Fishermen are advised not to venture into:

- ❖ South Andaman Sea & adjoining North Andaman Sea during 17th to 19th December.
- ❖ Southeast Bay of Bengal on 17th & 18th December.
- ❖ Southwest Bay of Bengal and along and off Sri-Lanka coast & Gulf of Mannar during 18th to 20th December.

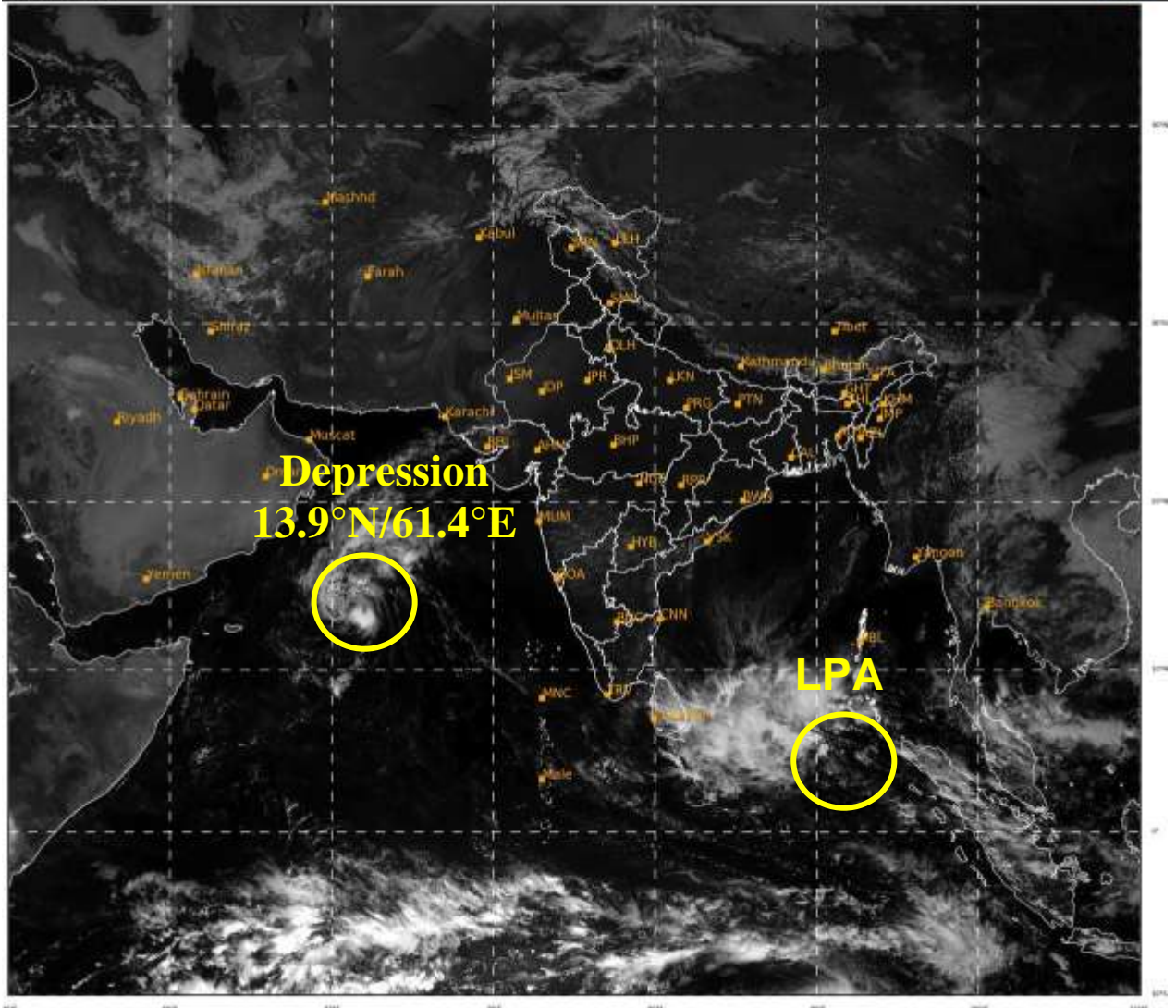
Both the systems are under continuous surveillance and the next message will be issued at 2030 hours IST of 17th December, 2022.

(M. Sharma)

Scientist D, Cyclone Warning Division, New Delhi

Copy to: ACWC Mumbai & Chennai/ CWC Ahmedabad/ CWC Thiruvananthapuram/ MC Goa

LEGEND: Heavy Rainfall: 64.5 to 115.5mm, **Very Heavy Rainfall:** 115.6 to 204.4mm **Most Places:** more than 76% of total stations, **Isolated Places:** Less than 25% of total



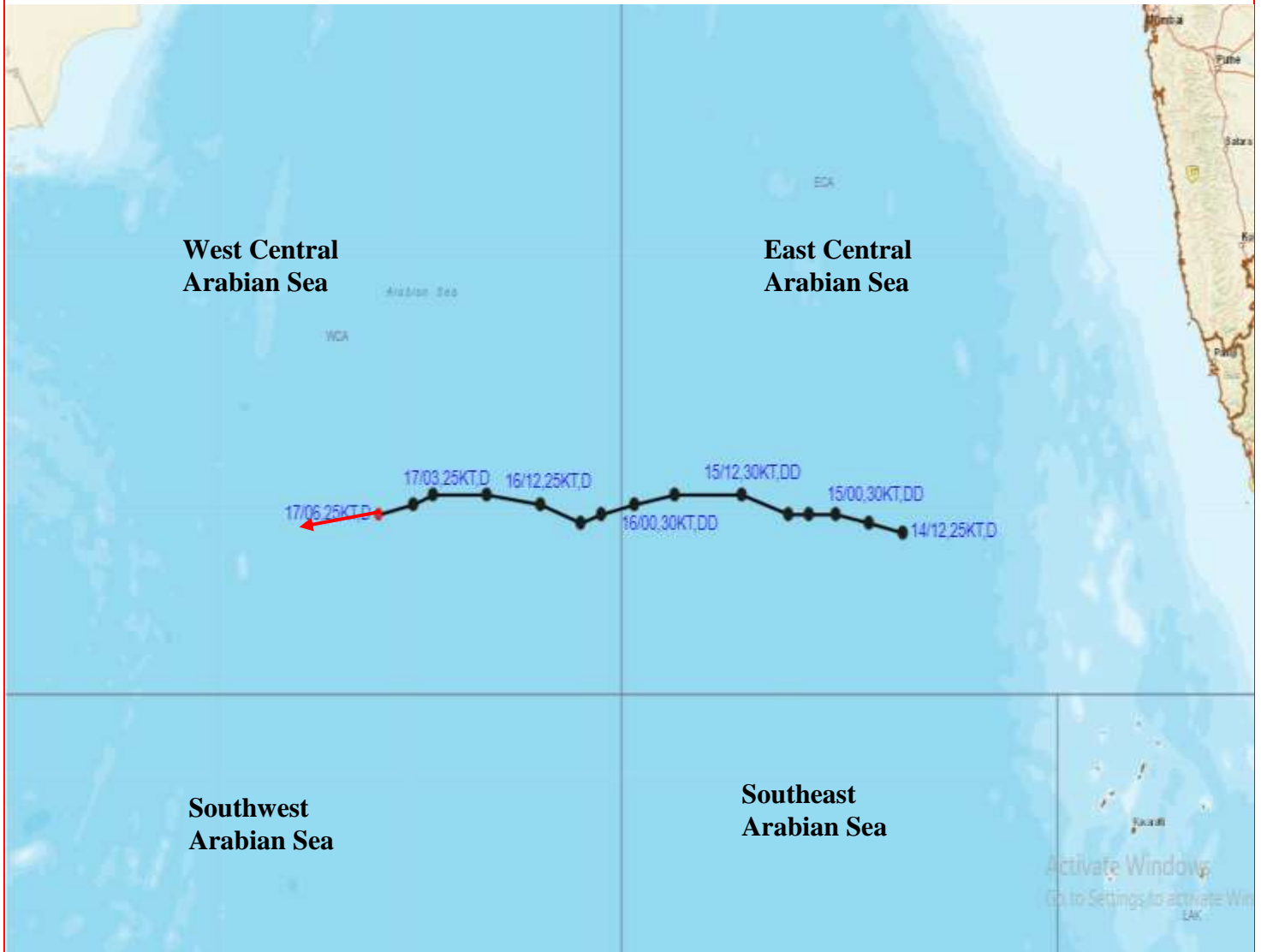
16

521

IMD, DELHI

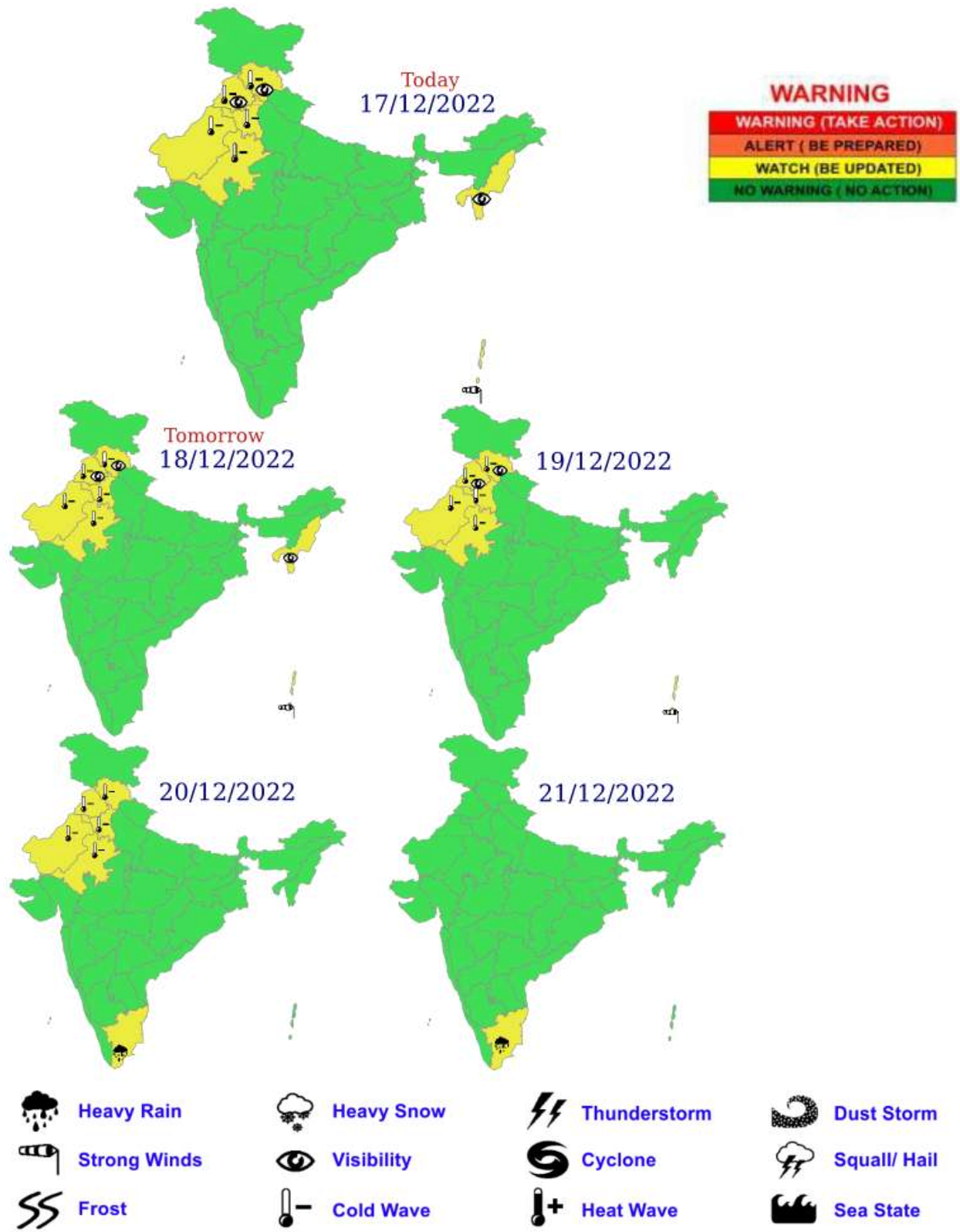


OBSERVED AND FORECAST TRACK OF DEPRESSION OVER WESTCENTRAL ARABIAN SEA BASED ON 0600 UTC OF 17TH DECEMBER, 2022



DATE/TIME IN UTC
IST=UTC + 0530
L: LOW PRESSURE AREA
WML: WELL MARKED LOW PRESSURE AREA
D: DEPRESSION (17-27 KT)
DD: DEEP DEPRESSION (28-33 KT)
CS: CYCLONIC STORM (34-47 KT)
SCS: SEVERE CYCLONIC STORM (48-63KT)
VSCS: VERY SEVERE CYCLONIC STORM (64-89 KT)
ESCS: EXTREMELY SEVERE CYCLONIC STORM (90-119 KT)
SuCS: SUPER CYCLONIC STORM (≥ 20 KT)

- LESS THAN 34 KT
- 34-47 KT
- ≥ 48 KT
- OBSERVED TRACK
- FORECAST TRACK
- ▲ CONE OF UNCERTAINTY



Fishermen warning graphics



Squally WX with wind speed 40-45 kmph gusting to 55 kmph

Fishermen are advised not to venture into the marked areas.