



**India Meteorological Department  
(Ministry of Earth Sciences)**

**NATIONAL BULLETIN NO. 15 (ARB/03/2022)**

**TIME OF ISSUE: 1150 HOURS IST**

**DATED: 17.12.2022**

**FROM: INDIA METEOROLOGICAL DEPARTMENT (FAX NO. 24643965/24699216/24623220)**

**TO: CONTROL ROOM, NDM, MINISTRY OF HOME AFFAIRS (FAX.NO. 23093750)**

**CONTROL ROOM NDMA (FAX.NO. 26701729)**

**CABINET SECRETARIAT (FAX.NO.23012284, 23018638)**

**PS TO HON'BLE MINISTER FOR S & T AND EARTH SCIENCES (FAX NO.23316745)**

**SECRETARY, MOES (FAX NO. 24629777)**

**H.Q. (INTEGRATED DEFENCE STAFF AND CDS) (FAX NO. 23005137/23005147)**

**DIRECTOR GENERAL, DOORDARSHAN (23385843)**

**DIRECTOR GENERAL, AIR (23421105, 23421219)**

**PIB MOES (FAX NO. 23389042)**

**UNI (FAX NO. 23355841)**

**D.G. NATIONAL DISASTER RESPONSE FORCE (NDRF) (FAX NO. 26105912, 2436 3260)**

**DIRECTOR, PUNCTUALITY, INDIAN RAILWAYS (FAX NO. 23388503)**

**CHIEF SECRETARY, GUJARAT (FAX NO. 079-23250305)**

**CHIEF SECRETARY, DAMAN & DIU (FAX NO. 0260-2230775)**

**CHIEF SECRETARY, DADRA & NAGAR HAVELI (FAX NO. 0260-2645466)**

**CHIEF SECRETARY, GOA (FAX NO. 0832-2415201)**

**CHIEF SECRETARY, MAHARASHTRA (FAX NO. 022- 22028594)**

**CHIEF SECRETARY, KARNATAKA (FAX NO. 080-22258913)**

**CHIEF SECRETARY, KERALA (FAX NO. 0471-2327176)**

**ADMINISTRATOR, LAKSHADWEEP ISLANDS (FAX NO. 0413-262184)**

**CHIEF SECRETARY, ANDHRA PRADESH (FAX NO. 0863-2441029, 08645-246600)**

**CHIEF SECRETARY, TAMIL NADU (FAX NO 044-25672304)**

**CHIEF SECRETARY, PUDUCHERRY (FAX NO 0413-2334145)**

**CHIEF SECRETARY, GOVT. OF GUJARAT (FAX NO. 079-23250305)**

**ADMINISTRATOR, ANDAMAN & NICOBAR ISLANDS (FAX NO. 03192- 232656)**

**Sub: (A) Depression over Westcentral Arabian Sea**

**(B) Low pressure area over Southeast Bay of Bengal & adjoining areas of East Equatorial Indian Ocean**

**(A) Depression over Westcentral Arabian Sea**

The Depression over Westcentral Arabian Sea moved west-southwestwards with a speed of 13 kmph during past 06 hours and lay centered at 0830 hrs IST of today, the 17<sup>th</sup> December 2022 over the same region near latitude 14.0°N and longitude 61.9°E about 1220 km west-northwest of Aminidivi (Lakshadweep), 1300 km west-southwest of Panjim (Goa) and 900 km east-southeast of Salalah (Oman).

It is very likely to move nearly westwards and weaken into a well marked low pressure area during next 12 hours.

**Warnings:**

**(i) Wind warning (warning graphics enclosed)**

- **Westcentral Arabian Sea: Squally weather with wind speed reaching 45-55 kmph gusting to 65 kmph is prevailing near the system center. It is likely to decrease gradually**

becoming **40-50 kmph gusting to 60 kmph during next 06 hours** and will decrease further becoming 25-35 kmph gusting to 45 kmph during subsequent 12 hours.

- **Southwest Arabian Sea: Squally weather with wind speed reaching 45-55 kmph gusting to 65 kmph** is prevailing over the region and is likely to become **40-50 kmph gusting to 60 kmph** during next 06 hours and gradually decrease thereafter.

### **(ii) Sea Condition**

- ❖ **Westcentral Arabian Sea: Sea Condition** is likely to be rough during next 12 hours and improve thereafter.
- ❖ **Southwest Arabian Sea: Sea Condition** is likely to be rough during next 12 hours and improve thereafter.

### **(iii) Fishermen Warning**

Fishermen are advised not to venture into **Westcentral & Southwest Arabian Sea** till 18<sup>th</sup> December, morning.

### **(B) Low pressure area over Southeast Bay of Bengal & adjoining East Equatorial Indian Ocean**

The **Low Pressure Area** over Southeast Bay of Bengal & adjoining East Equatorial Indian Ocean persists over the same region at 0830 hrs IST of today, the 17<sup>th</sup> December. It is likely to move westwards slowly over South Bay of Bengal during next 48 hours.

### **Warnings:**

#### **(i) Wind warning:**

- ❖ **Squally weather with wind speed reaching 40-45 kmph gusting to 55 kmph** is very likely over South Andaman Sea and adjoining North Andaman Sea during 17<sup>th</sup> to 19<sup>th</sup> December.
- ❖ **Squally weather with wind speed reaching 40-45 kmph gusting to 55 kmph** is likely over Southeast Bay of Bengal on 17<sup>th</sup> & 18<sup>th</sup> December.
- ❖ **Squally weather with wind speed reaching 40-45 kmph gusting to 55 kmph** is likely to prevail over central parts of South Bay of Bengal on 18<sup>th</sup> December and over Southwest Bay of Bengal, along and off Sri-Lanka coast and Gulf of Mannar on 19<sup>th</sup> & 20<sup>th</sup> December.

#### **(ii) Sea condition: Sea condition is likely to be rough over**

- ❖ South Andaman Sea and adjoining North Andaman Sea during 17<sup>th</sup> to 19<sup>th</sup> December.
- ❖ Southeast Bay of Bengal on 17<sup>th</sup> & 18<sup>th</sup> December.
- ❖ Southwest Bay of Bengal and along and off Sri-Lanka coast & Gulf of Mannar during 18<sup>th</sup> to 20<sup>th</sup> December.

#### **(iii) Fishermen Warning (warning graphics enclosed)**

Fishermen are advised not to venture into:

- ❖ South Andaman Sea & adjoining North Andaman Sea during 17<sup>th</sup> to 19<sup>th</sup> December.
- ❖ Southeast Bay of Bengal on 17<sup>th</sup> & 18<sup>th</sup> December.
- ❖ Southwest Bay of Bengal and along and off Sri-Lanka coast & Gulf of Mannar during 18<sup>th</sup> to 20<sup>th</sup> December.

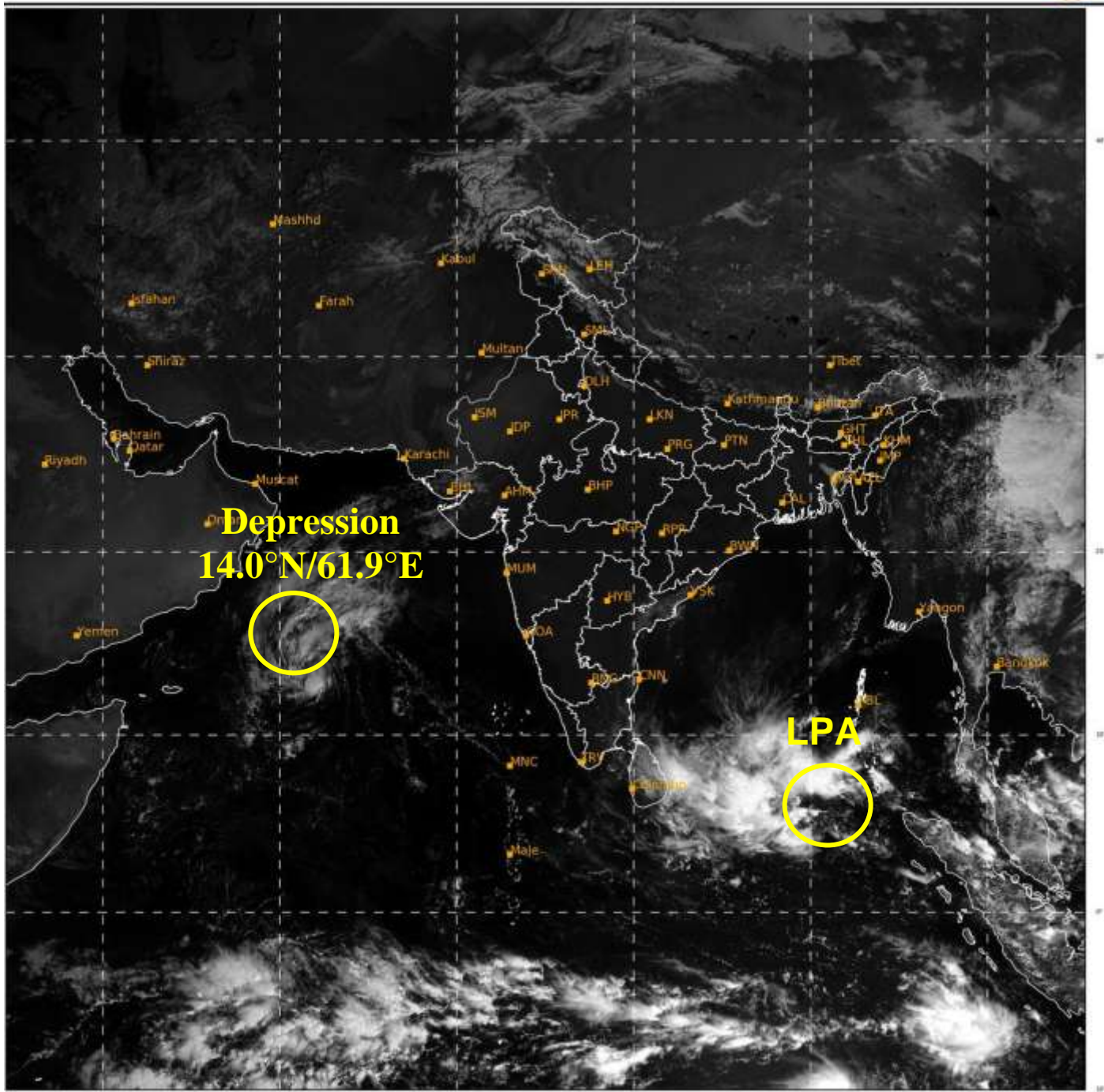
**Both the systems are under continuous surveillance and the next message will be issued at 1430 hours IST of 17<sup>th</sup> December, 2022.**

**(M. Sharma)**

**Scientist D, Cyclone Warning Division, New Delhi**

*Copy to: ACWC Mumbai & Chennai/ CWC Ahmedabad/ CWC Thiruvananthapuram/MC Goa*

**LEGEND: Heavy Rainfall:** 64.5 to 115.5mm, **Very Heavy Rainfall:** 115.6 to 204.4mm **Most Places:** more than 76% of total stations, **Isolated Places:** Less than 25% of total



17

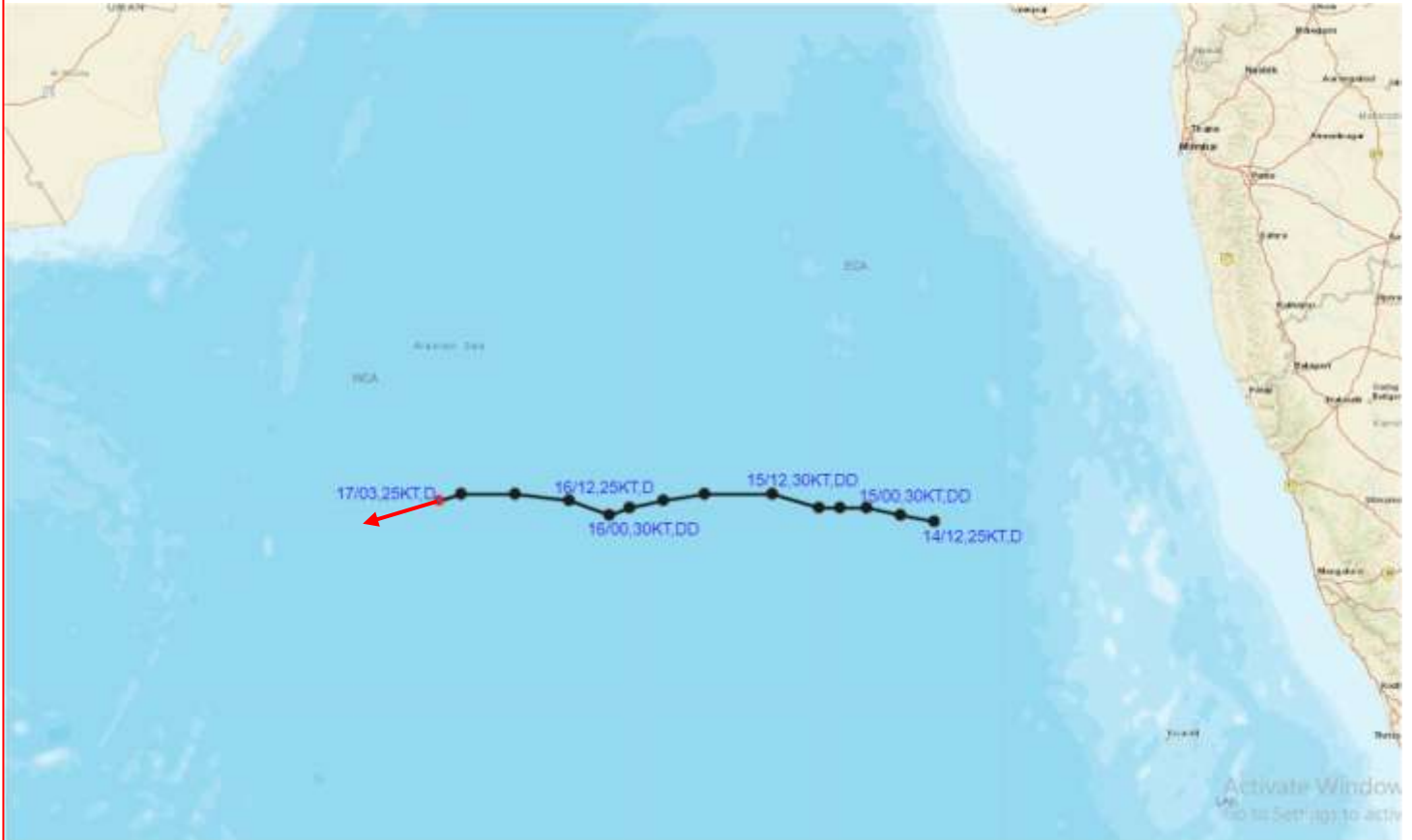
534

IMD, DELHI







LPA: Low Pressure Area

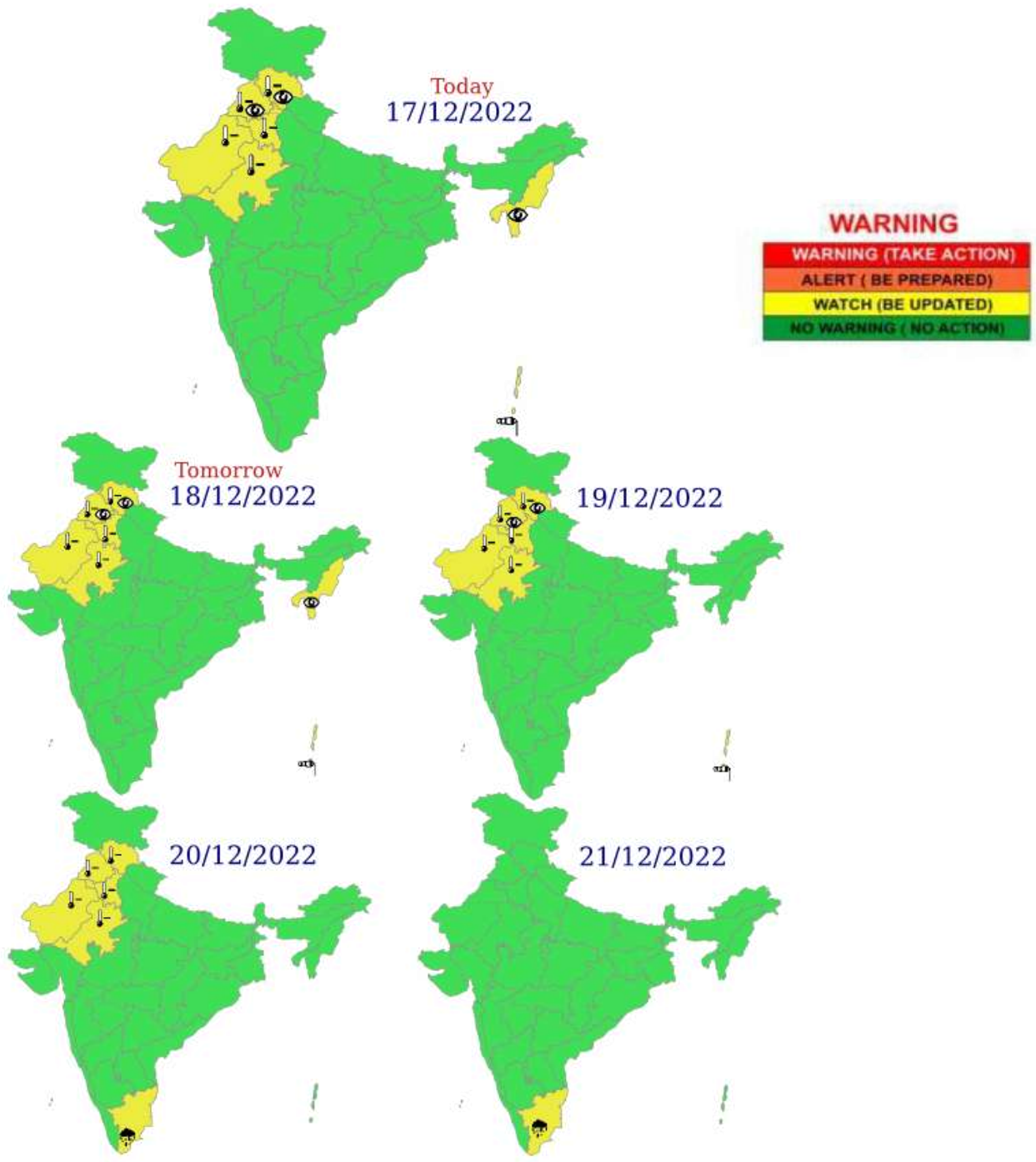


## OBSERVED AND FORECAST TRACK OF DEPRESSION OVER WESTCENTRAL ARABIAN SEA BASED ON 0300 UTC OF 17<sup>TH</sup> DECEMBER, 2022



DATE/TIME IN UTC  
IST=UTC + 0530  
L: LOW PRESSURE AREA  
WML: WELL MARKED LOW PRESSURE AREA  
D: DEPRESSION (17-27 KT)  
DD: DEEP DEPRESSION (28-33 KT)  
CS: CYCLONIC STORM (34-47 KT)  
SCS: SEVERE CYCLONIC STORM (48-63KT)  
VSCS: VERY SEVERE CYCLONIC STORM (64-89 KT)  
ESCS: EXTREMELY SEVERE CYCLONIC STORM (90-119 KT)  
SuCS: SUPER CYCLONIC STORM ( $\geq 20$  KT)

-  LESS THAN 34 KT
-  34-47 KT
-   $\geq 48$  KT
-  OBSERVED TRACK
-  FORECAST TRACK
-  CONE OF UNCERTAINTY



- |  |  |  |  |
|--|--|--|--|
|  Heavy Rain   |  Heavy Snow |  Thunderstorm |  Dust Storm   |
|  Strong Winds |  Visibility |  Cyclone      |  Squall/ Hail |
|  Frost        |  Cold Wave  |  Heat Wave    |  Sea State    |

# Fishermen warning graphics



**Squally WX with wind speed 40-45 kmph gusting to 55 kmph**

**Fishermen are advised not to venture into the marked areas.**