



**India Meteorological Department
(Ministry of Earth Sciences)**

BULLETIN NO. 5 (BOB/07/2022)

TIME OF ISSUE: 0845 HOURS IST

DATED: 23.10.2022

FROM: INDIA METEOROLOGICAL DEPARTMENT (FAX NO. 24643965/24699216/24623220)

TO: CONTROL ROOM, NDM, MINISTRY OF HOME AFFAIRS (FAX.NO. 23093750)

CONTROL ROOM NDMA (FAX.NO. 26701729)

CABINET SECRETARIAT (FAX.NO.23012284, 23018638)

PS TO HON'BLE MINISTER FOR S & T AND EARTH SCIENCES (FAX NO.23316745)

SECRETARY, MOES (FAX NO. 24629777)

H.Q. (INTEGRATED DEFENCE STAFF AND CDS) (FAX NO. 23005137/23005147)

DIRECTOR GENERAL, DOORDARSHAN (23385843)

DIRECTOR GENERAL, AIR (23421105, 23421219)

PIB MOES (FAX NO. 23389042)

UNI (FAX NO. 23355841)

D.G. NATIONAL DISASTER RESPONSE FORCE (NDRF) (FAX NO. 26105912, 2436 3260)

DIRECTOR, PUNCTUALITY, INDIAN RAILWAYS (FAX NO. 23388503)

CHIEF SECRETARY, ANDAMAN & NICOBAR ISLANDS (FAX NO. 03192- 232656)

CHIEF SECRETARY, GOVT. WEST BENGAL (FAX NO. 033-22144328)

CHIEF SECRETARY, GOVT. OF ODISHA (FAX NO. 0674 -2536660)

CHIEF SECRETARY, GOVT. OF ASSAM (FAX NO. 0361-2237200)

CHIEF SECRETARY, GOVT. OF MEGHALAYA (FAX NO. 0364-2225978)

CHIEF SECRETARY, GOVT. OF NAGALAND (FAX NO. 0370-2270057)

CHIEF SECRETARY, GOVT. OF MIZORAM (FAX NO. 0389 2322745)

CHIEF SECRETARY, GOVT. OF MANIPUR (FAX NO. NA)

CHIEF SECRETARY, GOVT. OF TRIPURA (FAX NO. 0381-2414013/ 2351122)

CHIEF SECRETARY, GOVT. OF ARUNACHAL PRADESH (FAX NO. 0360-2212466, 2215719)

CHIEF SECRETARY, GOVT. OF ANDHRA PRADESH (FAX NO. 0863-2441029, 08645-246600)

CHIEF SECRETARY, GOVT. OF TAMIL NADU (FAX NO. 044-25672304)

CHIEF SECRETARY, GOVT. OF PUDUCHERRY (FAX NO. 0413-2337575, 2334145)

**Subject: Depression intensified into a Deep Depression over eastcentral Bay of Bengal
(Cyclone Alert: West Bengal coast)**

The Depression over eastcentral Bay of Bengal moved northwestwards with a speed of 17 kmph during past 6 hours, intensified into a Deep Depression and lay centered at 0530 hours IST of today, the 23rd October over the same region near latitude 15.4^oN and longitude 89.0^oE, about 580 km northwest of Port Blair, 700 km south of Sagar Island and 830 km south of Barisal (Bangladesh).

It is very likely to move northwestwards during next 12 hrs and intensify into a cyclonic storm over central Bay of Bengal. Thereafter, it would recurve and move north-northeastwards and cross Bangladesh coast between Tinkona Island and Sandwip around 25th October early morning.

Forecast track and intensity are given below:

Date/Time(IST)	Position (Lat. °N/ long. °E)	Maximum sustained surface wind speed (Kmph)	Category of cyclonic disturbance
23.10.22/0530	15.4/89.0	50-60 gusting to 70	Deep Depression
23.10.22/1130	16.1/88.4	55-65 gusting to 75	Deep Depression
23.10.22/1730	16.9/88.0	60-70 gusting to 80	Cyclonic Storm
23.10.22/2330	17.7/88.1	65-75 gusting to 85	Cyclonic Storm
24.10.22/0530	18.6/88.5	80-90 gusting to 100	Cyclonic Storm
24.10.22/1730	20.4/89.5	85-95 gusting to 105	Severe Cyclonic Storm
25.10.22/0530	22.3/90.6	90-100 gusting to 110	Severe Cyclonic Storm
25.10.22/1730	24.0/91.7	45-55 gusting to 65	Depression
26.10.22/0530	25.8/92.9	30-40 gusting to 50	Well Marked Low Pressure Area

Warnings:

(i) Rainfall (warning graphics enclosed)

Andaman and Nicobar Islands: Light to moderate rainfall at most places with **heavy rainfall** at isolated places over Andaman & Nicobar Islands on 23rd October.

Odisha: Light to moderate rainfall at many places likely over coastal districts of Odisha on 23rd and light to moderate rainfall with isolated **heavy rainfall** likely over the same region on 24th and isolated **heavy rainfall** over north coastal Odisha districts on 25th October.

West Bengal: Light to moderate rainfall at a few places likely over coastal districts of West Bengal on 23rd. Light to moderate rainfall with isolated **heavy rainfall** on 24th and **heavy to very heavy rainfall** at isolated places on 25th October likely over coastal districts.

Northeastern States:

Light to moderate rainfall at most places with **heavy to very heavy rainfall** at isolated places over south Assam, East Meghalaya, Nagaland, Mizoram, Manipur & Tripura on 24th October. Light to moderate rainfall at most places with isolated **heavy to very heavy rainfall** over the same region and isolated **extremely heavy rainfall** over Tripura & Mizoram likely over the same region on 25th and isolated **heavy rainfall** likely on 26th October.

(ii) Wind warning:

23rd October: Squally wind speed reaching 50-60 kmph gusting to 70 kmph is very likely over westcentral and adjoining eastcentral & southeast Bay of Bengal from morning. It would gradually increase becoming gale wind 65-75 kmph gusting to 85 kmph over the same region from 23rd evening. Squally wind speed reaching 35-45 kmph gusting to 55 kmph is very likely along & off Odisha and West Bengal coasts and Andaman Islands and adjoining north Andaman Sea.

24th October: Gale wind speed reaching 80-90 kmph gusting to 100 kmph is likely over westcentral and adjoining areas of eastcentral & north Bay of Bengal. It would gradually increase becoming 85-95 kmph gusting to 105 kmph over the same region from 24th evening. Squally wind speed reaching 40-50 kmph gusting to 60 kmph is very likely along & off Odisha and West Bengal coasts.

25th October: Gale wind speed reaching 90-100 kmph gusting to 110 kmph is likely over north Bay of Bengal and along & off Bangladesh coast; 80-90 kmph gusting to 100 kmph likely along & off 24 Parganas District and 60-70 kmph gusting to 80 kmph along & off east Medinipur

district off West Bengal coast till morning. It would gradually decrease becoming 45-55 kmph gusting to 65 kmph over coastal areas of Bangladesh after evening. Squally wind speed reaching 45-55 kmph gusting to 65 kmph likely along and off Balasore district & 40-50 kmph gusting to 60 kmph along & off remaining north coastal districts of Odisha and over Mizoram & Tripura.

(iii) Sea condition

23rd October: Very rough over westcentral and adjoining eastcentral & southeast Bay of Bengal from morning. It would become high from evening over westcentral and adjoining eastcentral Bay of Bengal. Rough along & off Odisha-West Bengal-Bangladesh coasts.

24th October: High over westcentral and adjoining eastcentral & north Bay of Bengal. Rough to very rough along & off Odisha-West Bengal-Bangladesh coasts.

25th October: High over north Bay of Bengal along & off Bangladesh-West Bengal coasts.

(iv) Fishermen Warning (warning graphics enclosed)

Fishermen are advised not to venture into central Bay of Bengal on 23rd, central & adjoining north Bay of Bengal on 24th, north & adjoining central Bay of Bengal on 25th October, 2022.

Fishermen are advised not to venture into Sea along and off Odisha, West Bengal & Bangladesh coasts during 23rd to 25th October. Fishermen out at sea are advised to return to the coast.

(v) Advisory for On-shore and Off-shore Installations

Regulation of offshore activities from 23rd over central and North Bay of Bengal till 25th and over Andaman Sea till 23rd. Suspension of off-shore activities during 24th to 25th October along and off Odisha and West Bengal coasts.

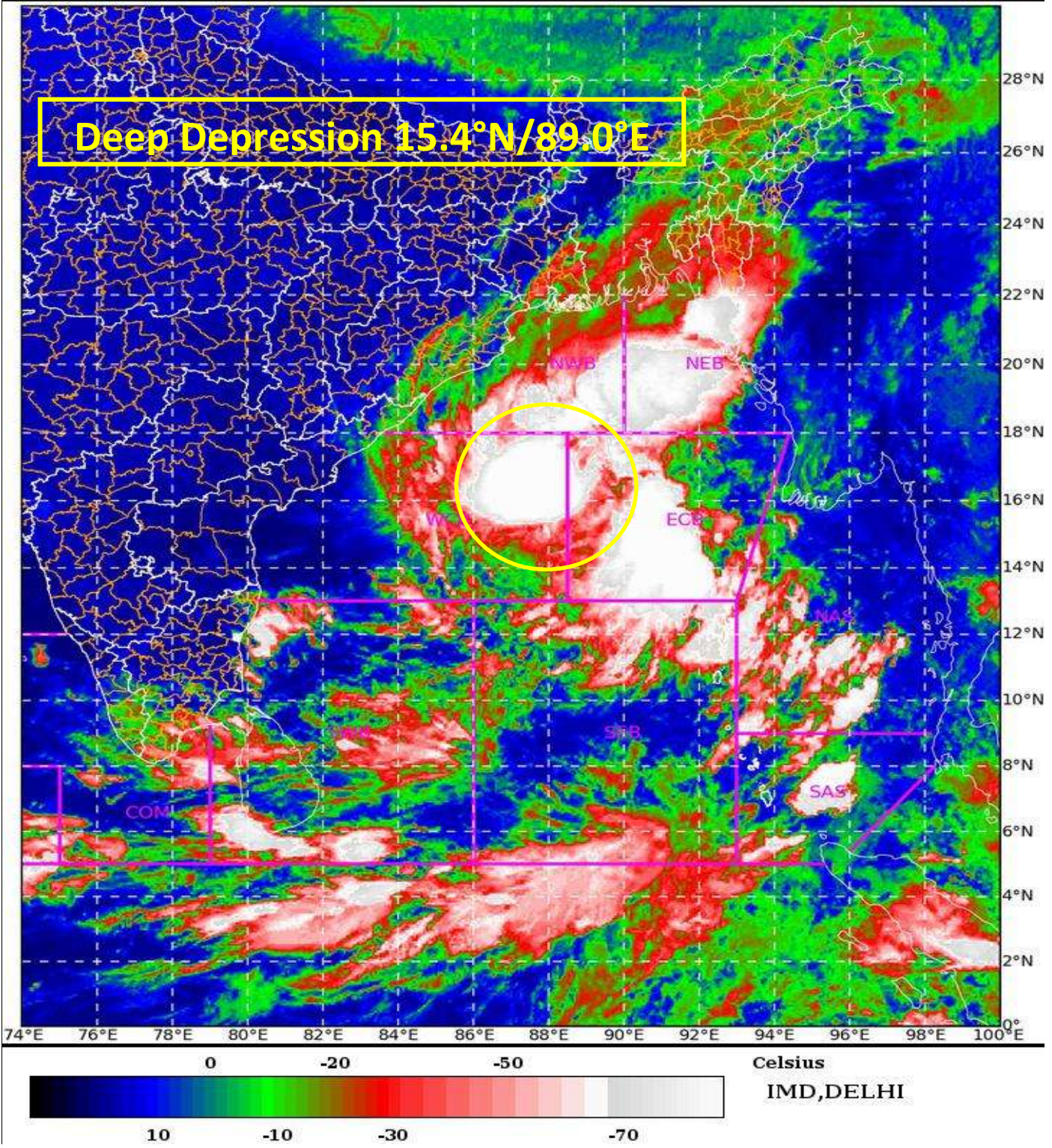
The system is under continuous surveillance and the next message will be issued at 1130 hours IST of today, the 23rd October, 2022.

(Surendra Pratap Singh)
Scientist-C, Cyclone Warning Division, New Delhi

Copy to: ACWC Kolkata/ ACWC Chennai/ CWC Bhubaneswar/CWCVisakhapatnam/MO Port Blair

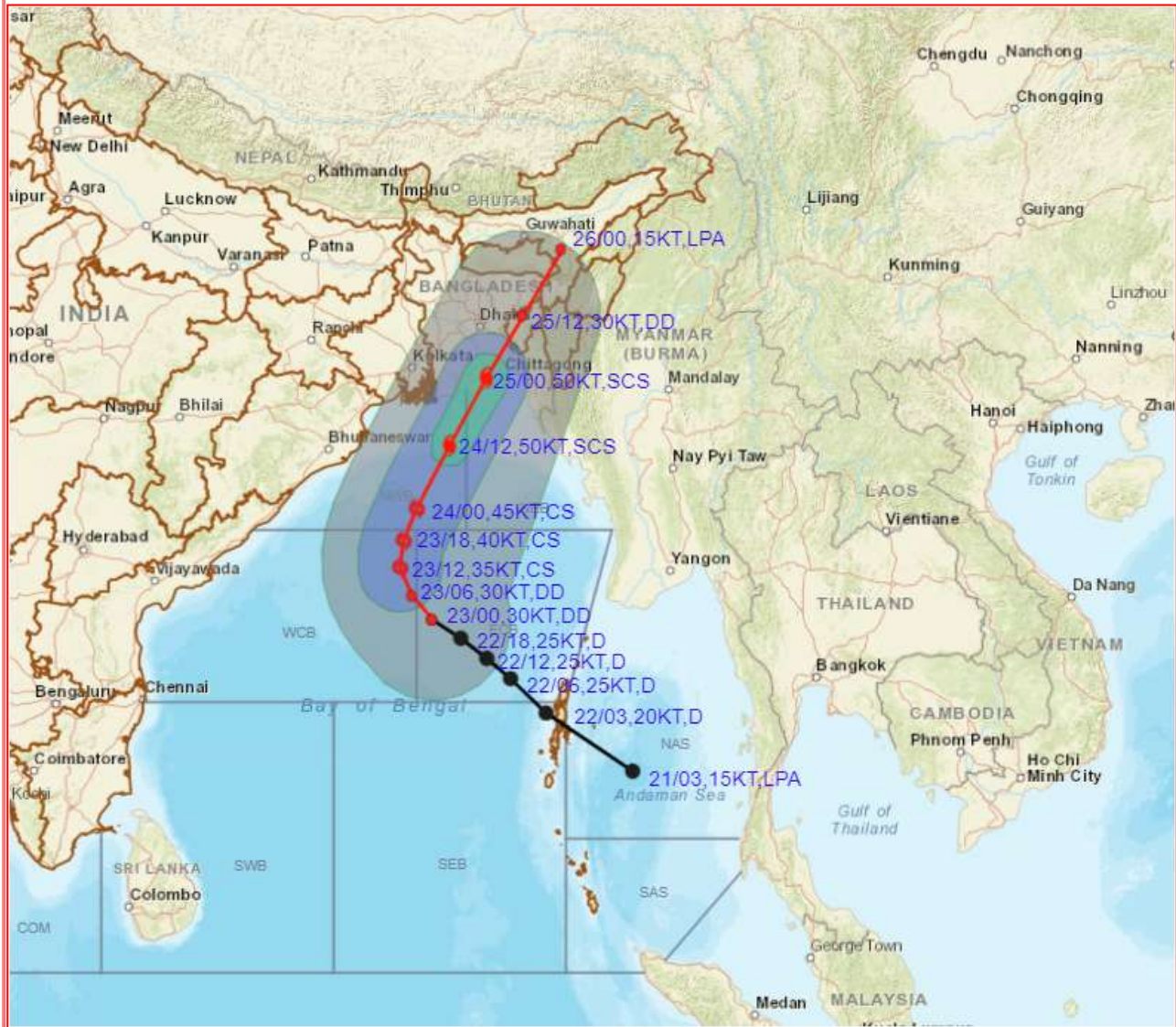
LEGEND: Heavy Rainfall: 64.5 to 115.5mm, **Very Heavy Rainfall:** 115.6 to 204.4mm **Most Places:** more than 76% of total stations, **Isolated Places:** Less than 25% of total

SAT : INSAT-3D IMG 23-10-2022/(0200 to 0226) GMT
IMG_TIR1_TEMP 10.8 um 23-10-2022/(0730 to 0756) IST
L1C Mercator





OBSERVED AND FORECAST TRACK ALONGWITH QUADRANT WIND DISTRIBUTION OF DEPRESSION OVER EASTCENTRAL BAY OF BENGAL BASED ON 0000 UTC OF 23rd OCTOBER, 2022



DATE/TIME IN UTC

IST=UTC + 0530

L: LOW PRESSURE AREA

WML: WELL MARKED LOW PRESSURE AREA

D: DEPRESSION (17-27 KT)

DD: DEEP DEPRESSION (28-33 KT)

CS: CYCLONIC STORM (34-47 KT)

SCS: SEVERE CYCLONIC STORM (48-63 KT)

VSCS: VERY SEVERE CYCLONIC STORM (64-89 KT)

ESCS: EXTREMELY SEVERE CYCLONIC STORM (90-119 KT)

SuCS: SUPER CYCLONIC STORM (\geq 120 KT)

● LESS THAN 34 KT

○ 34-47 KT

● \geq 48 KT

— OBSERVED TRACK

— FORECAST TRACK

▲ CONE OF UNCERTAINTY

AREA OF MAXIMUM SUSTAINED WIND SPEED:

■ 28-33 KT (52-61 KMPH)

■ 34-49 KT (62-91 KMPH)

■ 50-63 KT (92-117 KMPH)

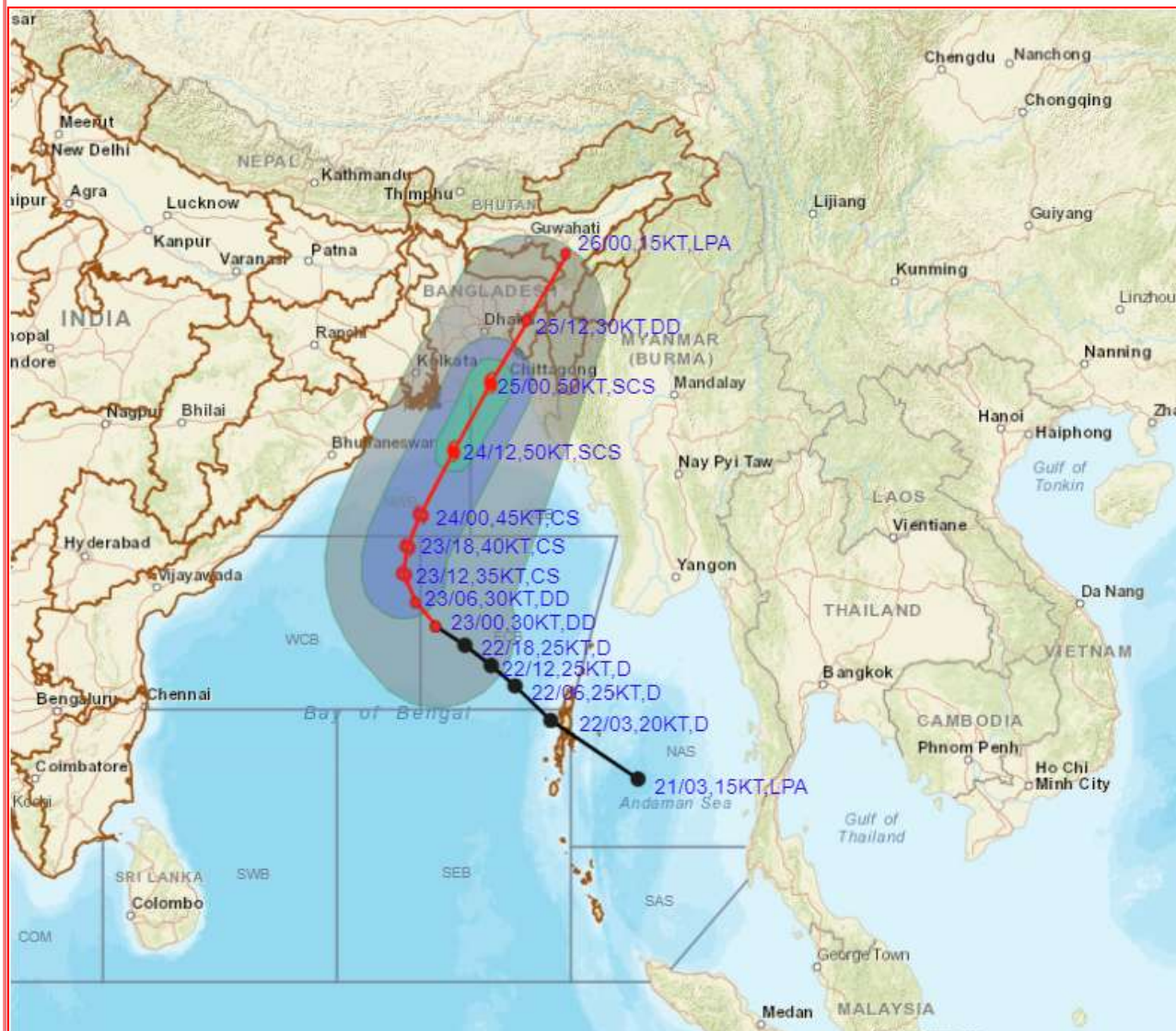
■ \geq 64 KT (\geq 118 KMPH)

IMPACT OVER THE SEA

MSW (knot/kmph)	Impact	Action
28-33 (52-61)	Very rough seas	Total suspension of fishing operations
34-49 (62-91)	High to very high seas	Total suspension of fishing operations
50-63 (92-117)	Very high seas	Total suspension of fishing operations
\geq 64 (\geq 118)	Phenomenal	Total suspension of fishing operations



OBSERVED AND FORECAST TRACK ALONGWITH QUADRANT WIND DISTRIBUTION OF DEPRESSION OVER EASTCENTRAL BAY OF BENGAL BASED ON 0000 UTC OF 23rd OCTOBER, 2022



DATE/TIME IN UTC

IST=UTC + 0530

L: LOW PRESSURE AREA

WML: WELL MARKED LOW PRESSURE AREA

D: DEPRESSION (17-27 KT)

DD: DEEP DEPRESSION (28-33 KT)

CS: CYCLONIC STORM (34-47 KT)

SCS: SEVERE CYCLONIC STORM (48-63KT)

VSCS: VERY SEVERE CYCLONIC STORM (64-89 KT)

ESCS: EXTREMELY SEVERE CYCLONIC STORM (90-119 KT)

SuCS: SUPER CYCLONIC STORM (≥ 120 KT)

● LESS THAN 34 KT

○ 34-47 KT

● ≥ 48 KT

— OBSERVED TRACK

— FORECAST TRACK

▲ CONE OF UNCERTAINTY

AREA OF MAXIMUM SUSTAINED WIND SPEED:

■ 28-33 KT (52-61 KMPH)

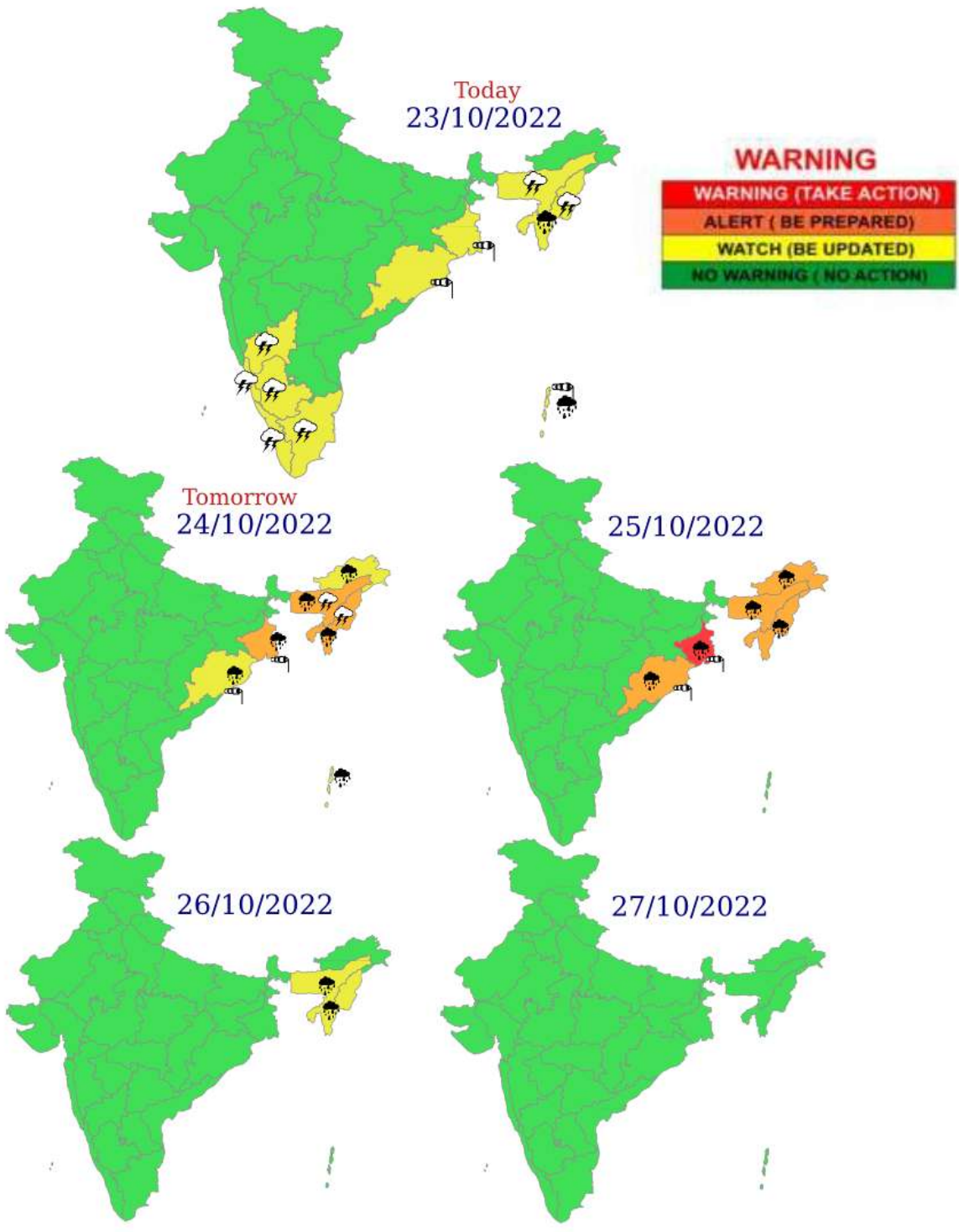
■ 34-49 KT (62-91 KMPH)

■ 50-63 KT (92-117 KMPH)

■ ≥ 64 KT (≥118 KMPH)

IMPACT OVER THE SEA

MSW (knot/kmph)	Impact	Action
28-33 (52-61)	Very rough seas	Total suspension of fishing operations
34-49 (62-91)	High to very high seas	Total suspension of fishing operations
50-63 (92-117)	Very high seas	Total suspension of fishing operations
≥ 64 (≥118)	Phenomenal	Total suspension of fishing operations



	Heavy Rain		Heavy Snow		Thunderstorm		Dust Storm
	Strong Winds		Visibility		Cyclone		Squall/ Hall
	Frost		Cold Wave		Heat Wave		Sea State

Fishermen warning graphics



	Squally WX with wind speed 40-45 kmph gusting to 55 kmph
	Squally WX with wind speed 45-55 kmph gusting to 65 kmph
	Squally wind speed with wind speed 45-55 kmph gusting to 65 kmph
	Squally wind speed with wind speed 50-60 kmph gusting to 70 kmph
	Gale wind speed with wind speed 65-75 kmph gusting to 85 kmph
	Gale wind speed with wind speed 80-90 kmph gusting to 100 kmph
	Gale wind speed with wind speed 90-100 kmph gusting to 110 kmph

Fishermen are advised not to venture into the marked areas.